



**SUPERIOR**  
Black Lick, Pa.  
Mercer, Pa.  
Wooster, Oh.  
Cleveland, Ok.  
Trinidad, Co.

## DUAL INDUCTION LOG

Company XTO Energy Inc.  
Well Golden Eagle 33-09  
Field Purgatoire River  
County Las Animas State Colorado

Location: API # : 05 071 09484 00

1731' FSL & 567' FEL

SEC 33 TWP 33S RGE 67W

Permanent Datum Ground Level Elevation 7516'  
Log Measured From Ground Level  
Drilling Measured From Ground Level

Other Services  
CDL  
NEUTRON  
Elevation  
K.B. -----  
D.F. -----  
G.L. 7516'

Date 3-1-08

Run Number One

Depth Driller 2209'

Depth Logger 2209'

Bottom Logged Interval 2206'

Top Log Interval Surface Casing

Casing Driller 8 5/8" @ 455'

Casing Logger 452'

Bit Size 7 7/8"

Type Fluid in Hole Water

Density / Viscosity ///

pH / Fluid Loss ///

Source of Sample ///

Rm @ Meas. Temp ///

Rmf @ Meas. Temp ///

Rmc @ Meas. Temp ///

Source of Rmf / Rmc ///

Rm @ BHT ///

Time Circulation Stopped 9:00 A.M.

Time Logger on Bottom 11:30 A.M.

Maximum Recorded Temperature 115 DEG F

Equipment Number T697

Location Trinidad

Recorded By J. Cappellucci

Witnessed By Mr. Dalton King

<<< Fold Here >>>

All interpretations are opinions based on inferences from electrical or other measurements and we cannot and do not guarantee the accuracy or correctness of any interpretation, and we shall not, except in the case of gross or willful negligence on our part, be liable or responsible for any loss, costs, damages, or expenses incurred or sustained by anyone resulting from any interpretation made by any of our officers, agents or employees. These interpretations are also subject to our general terms and conditions set out in our current Price Schedule.

### Comments

Well Directions:  
1st Bosque Entrance to Cherry Canyon, Past Compressor Station 5,  
Up to first 4 way, stay left, take first left to location.

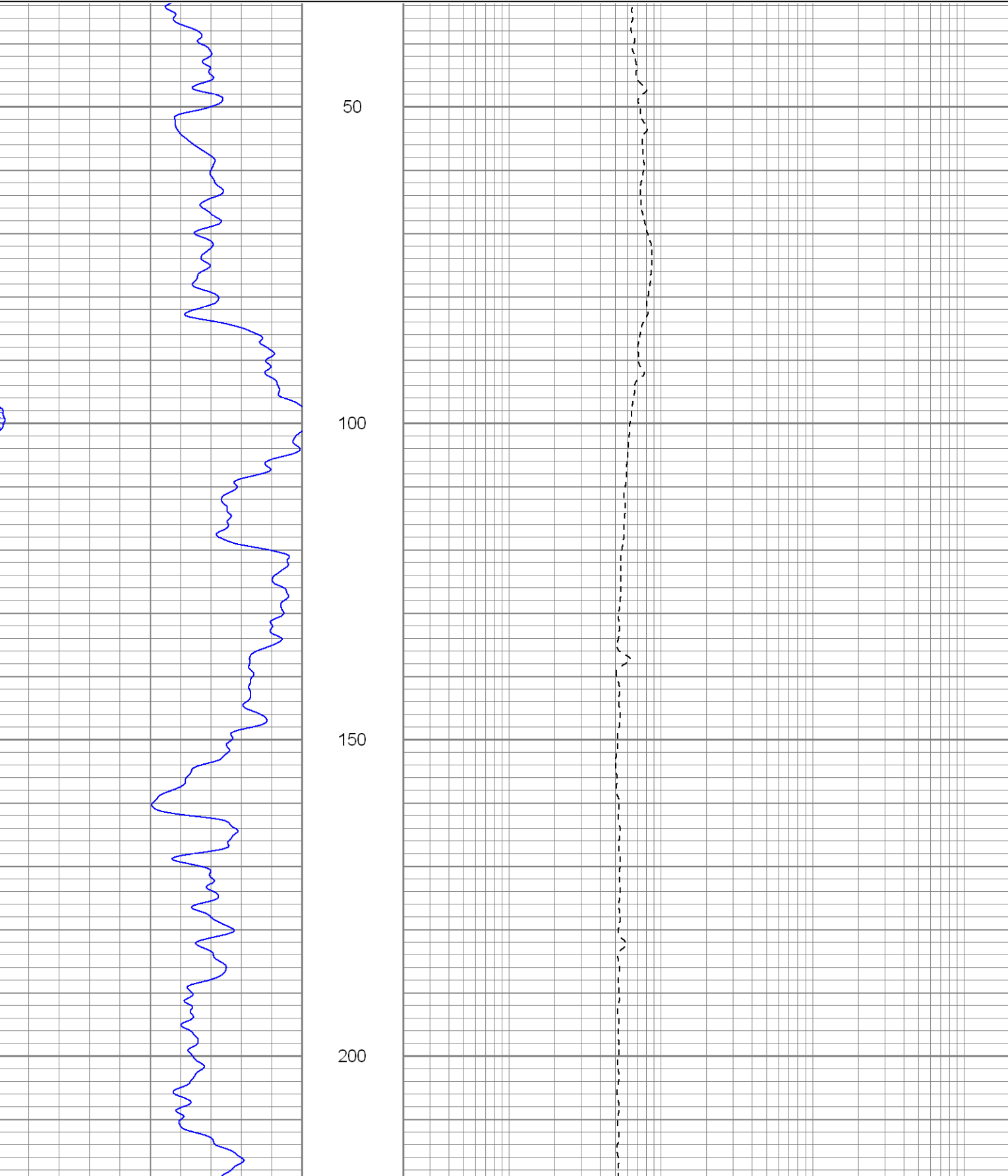


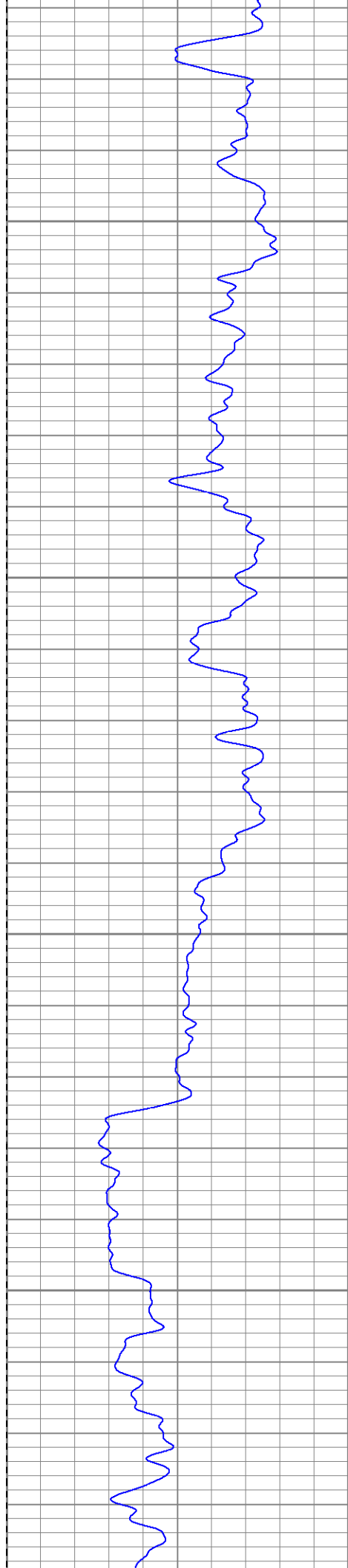
**SUPERIOR**  
Black Lick, Pa.  
Mercer, Pa.  
Wooster, Oh.  
Cleveland, Ok.  
Trinidad, Co.

# Main Pass

Database File: xtoge3309.db  
Dataset Pathname: pass2.1  
Presentation Format: dil  
Dataset Creation: Sat Mar 01 13:09:00 2008 by Calc Open-Cased 070814  
Charted by: Depth in Feet scaled 1:240

0	GR (GAPI)	200	0.2	RILM (Ohm-m)	2000
-200	SP (mV)	0	0.2	RILD (Ohm-m)	2000
			0.2	RLL3 (Ohm-m)	2000



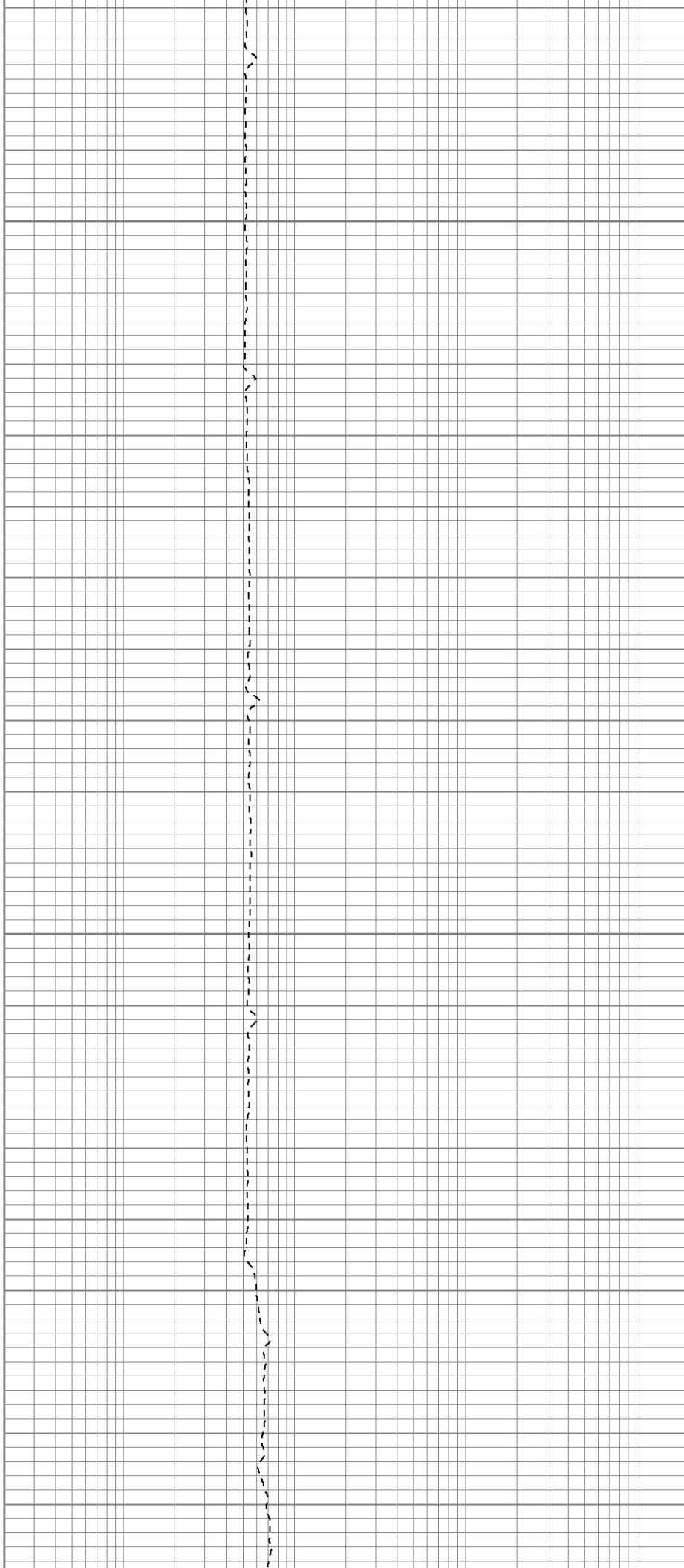


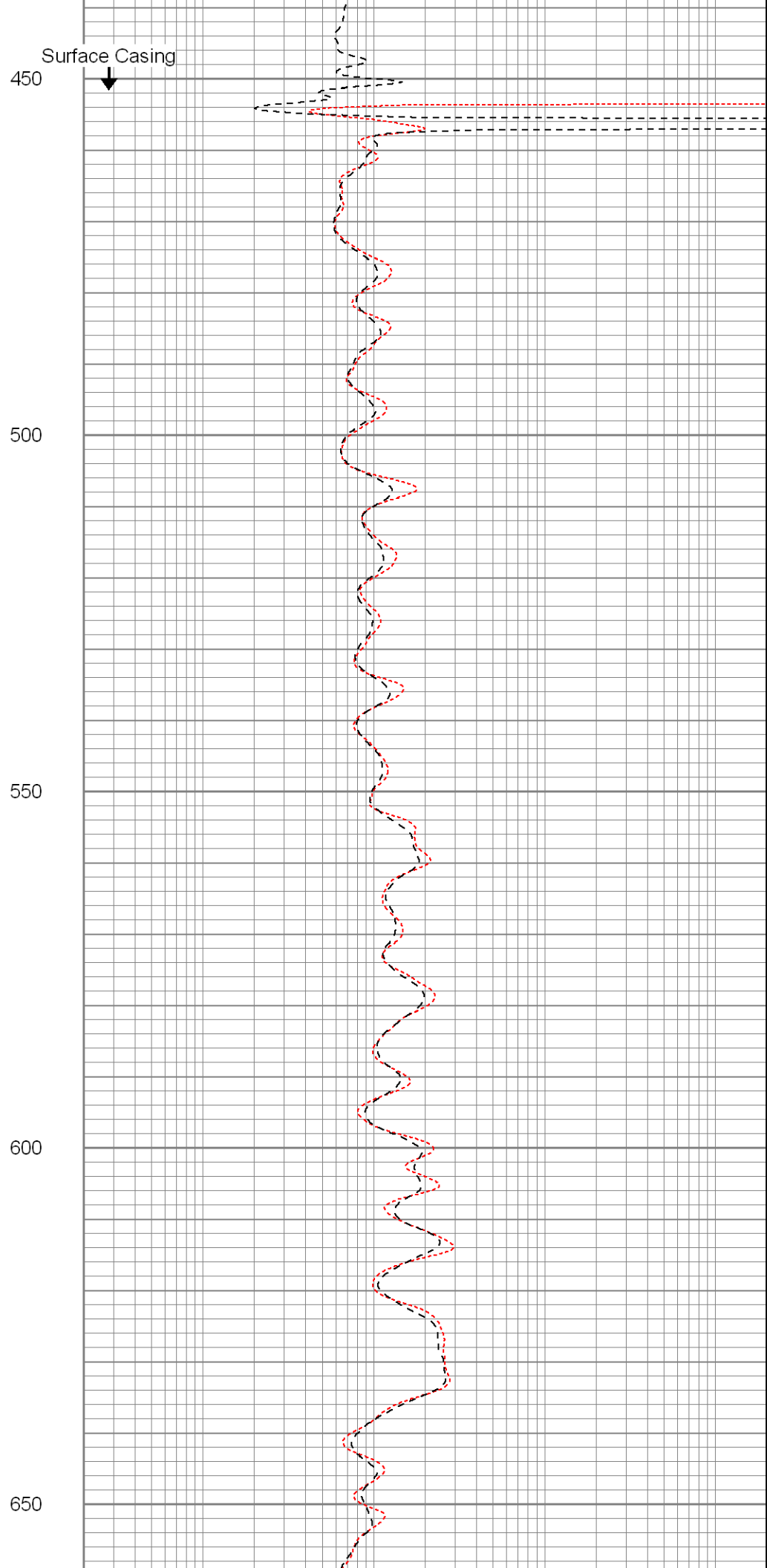
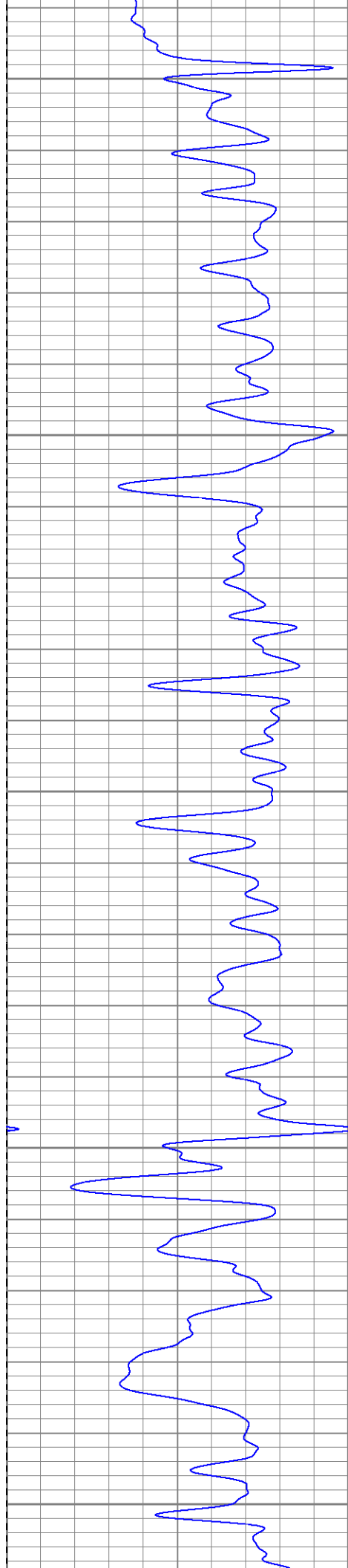
250

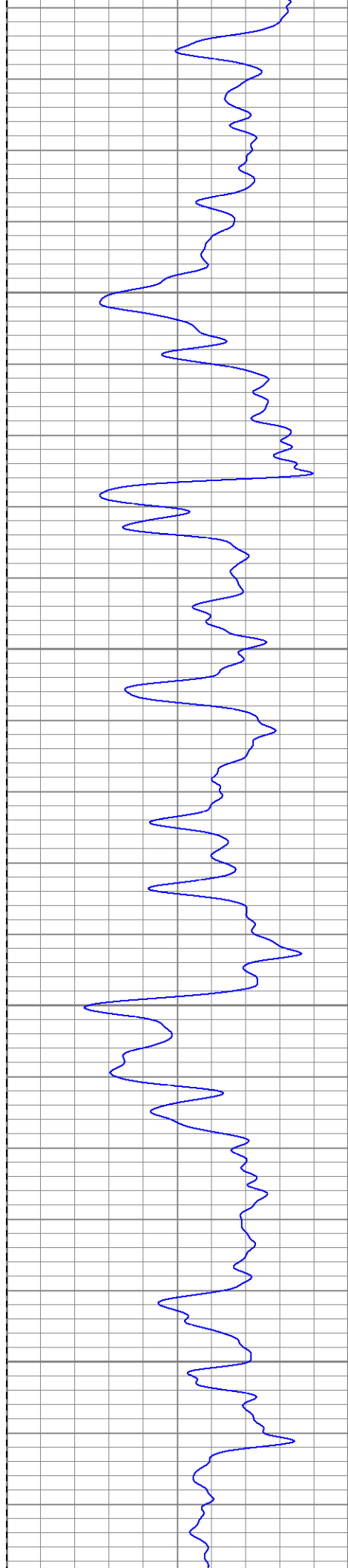
300

350

400





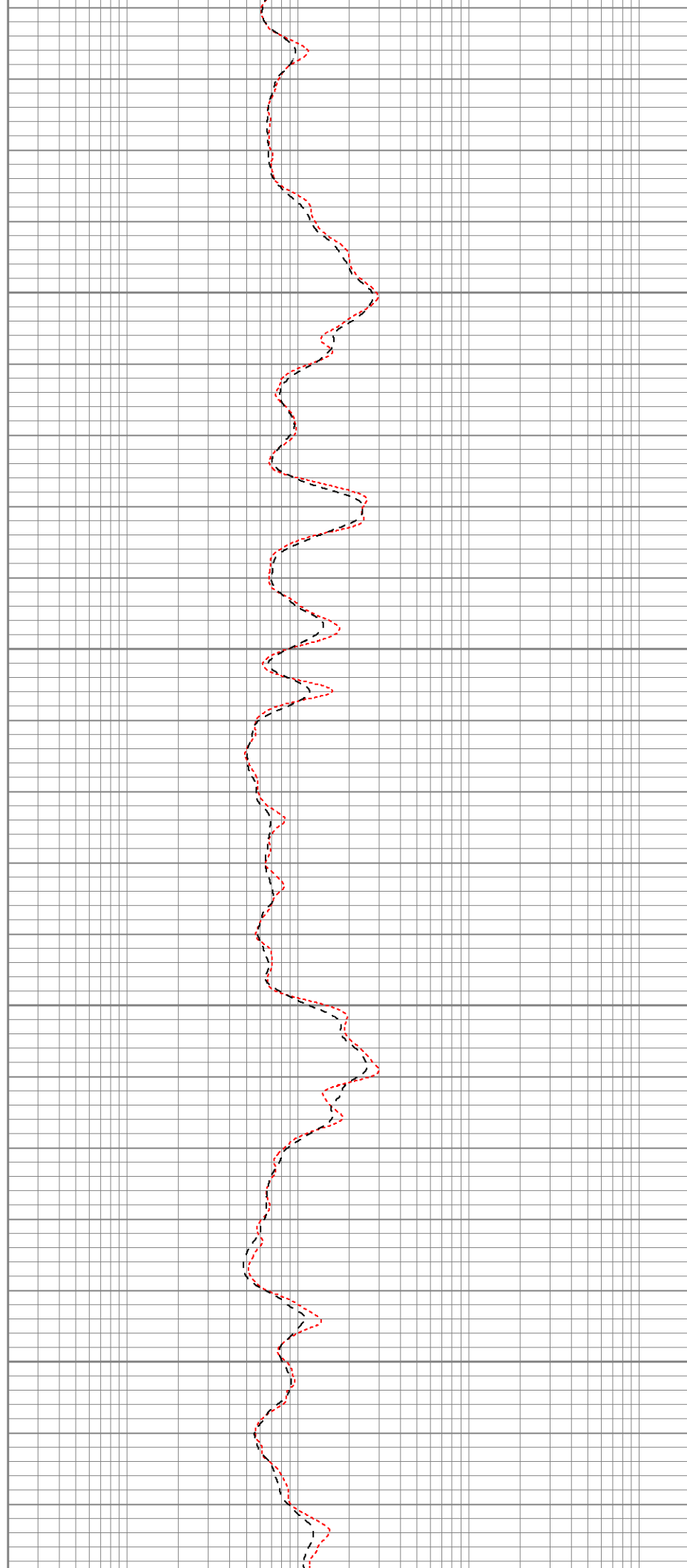


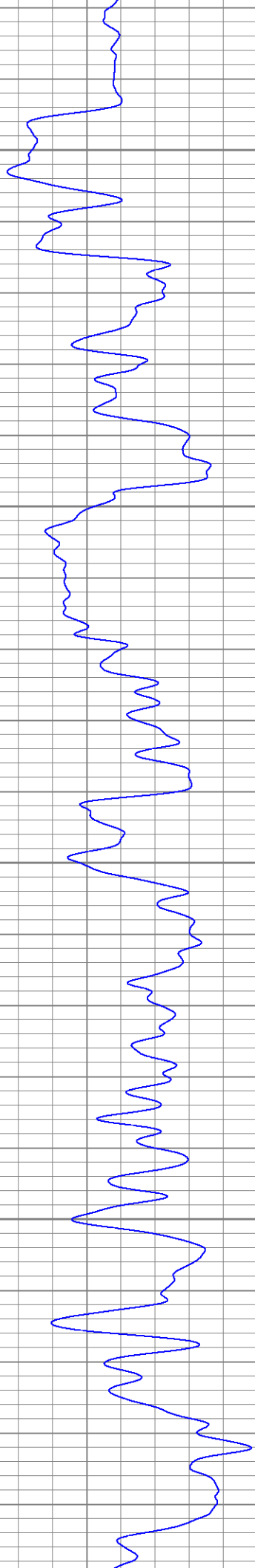
700

750

800

850



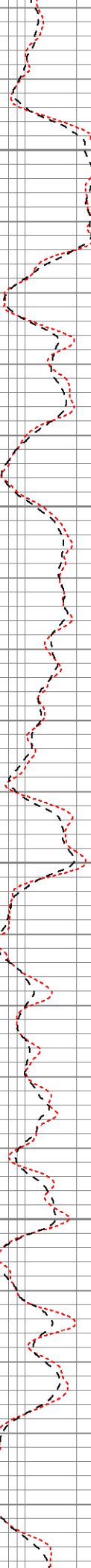


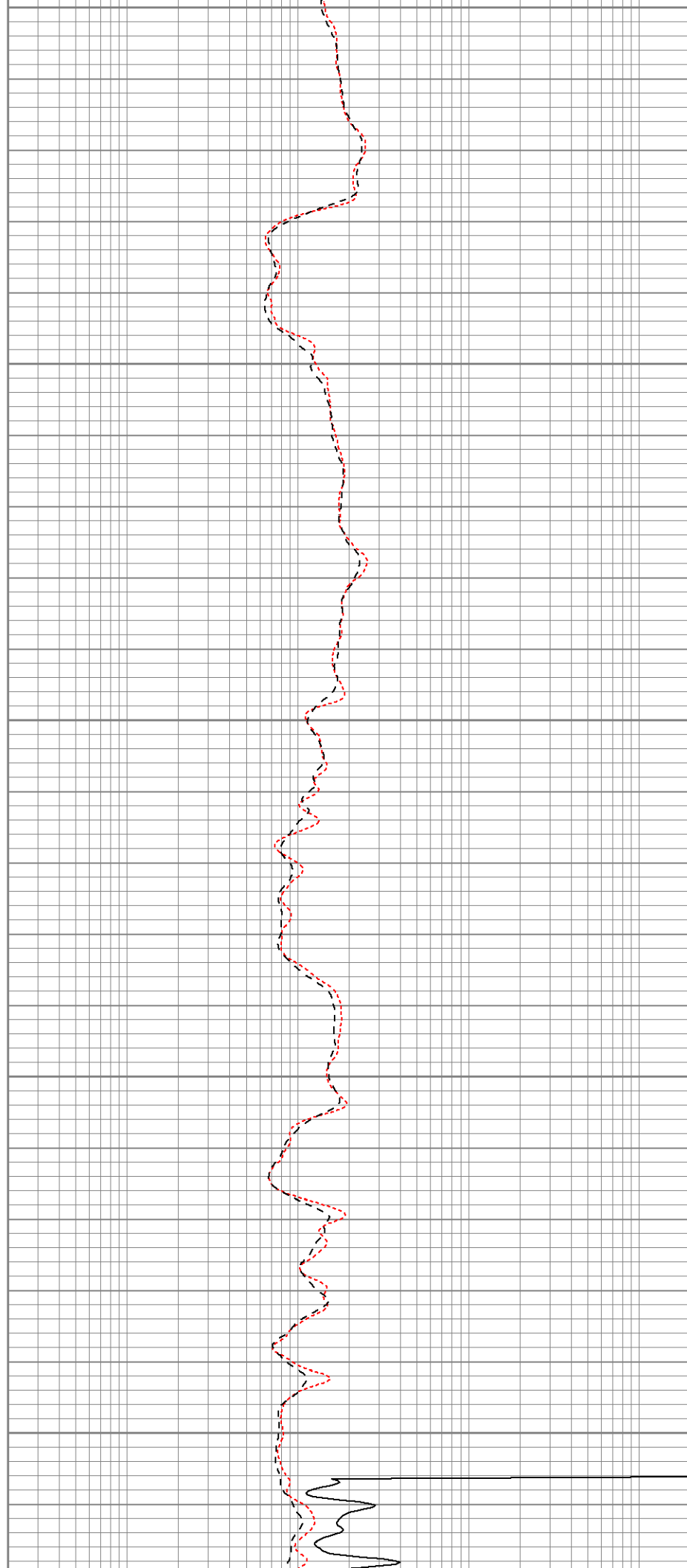
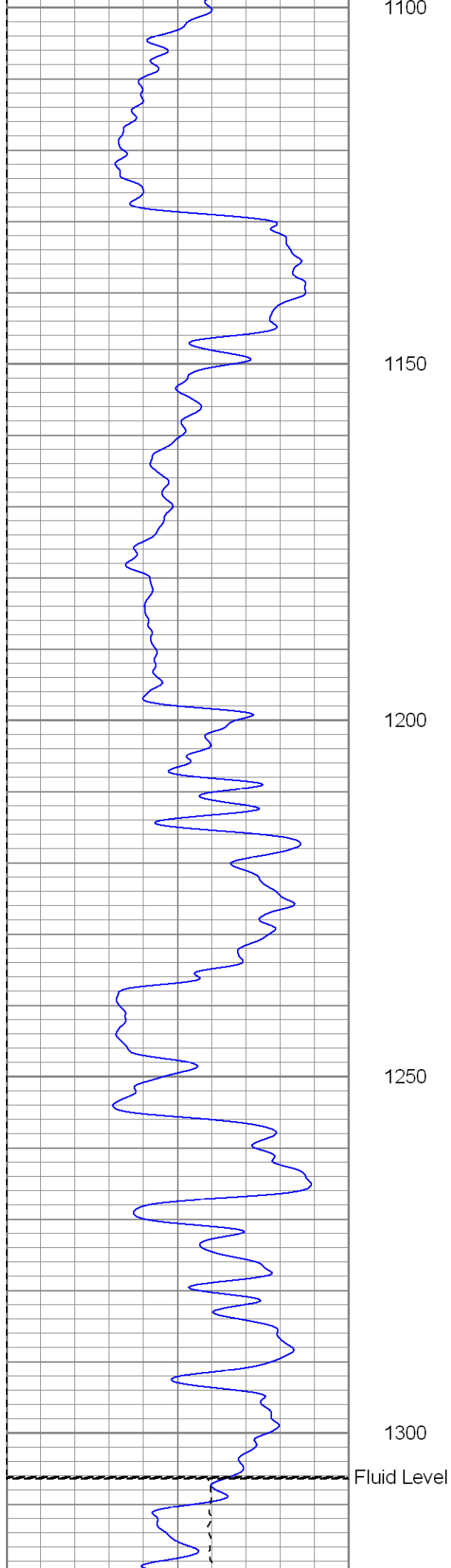
900

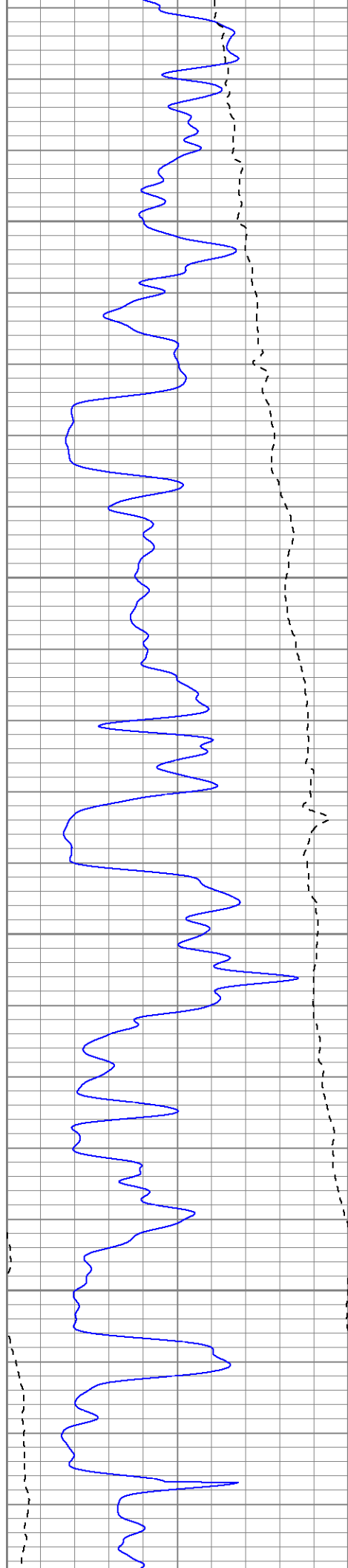
950

1000

1050





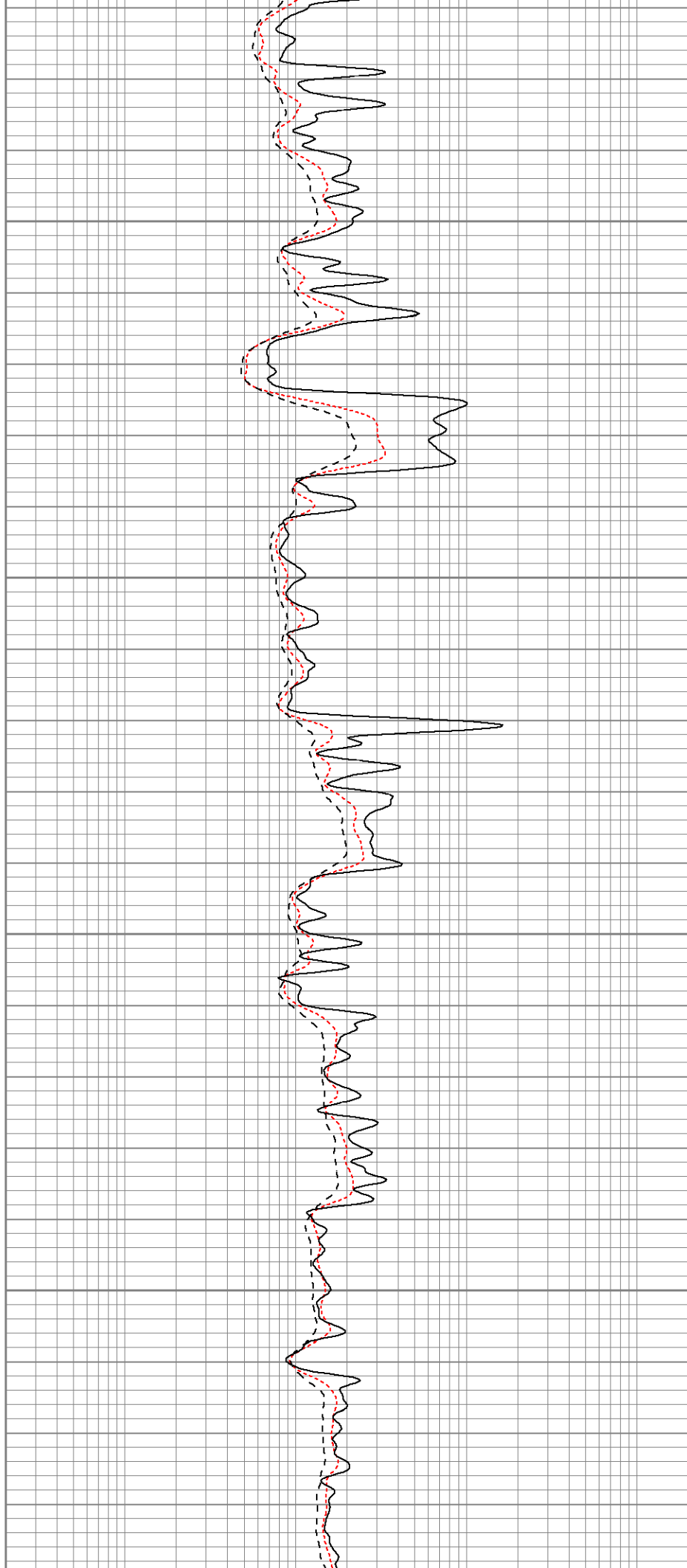


1350

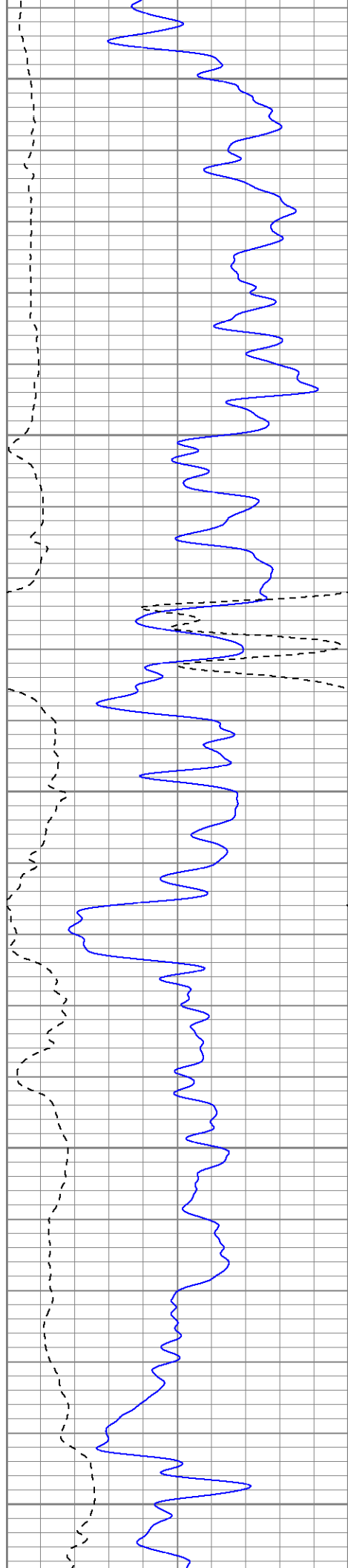
1400

1450

1500







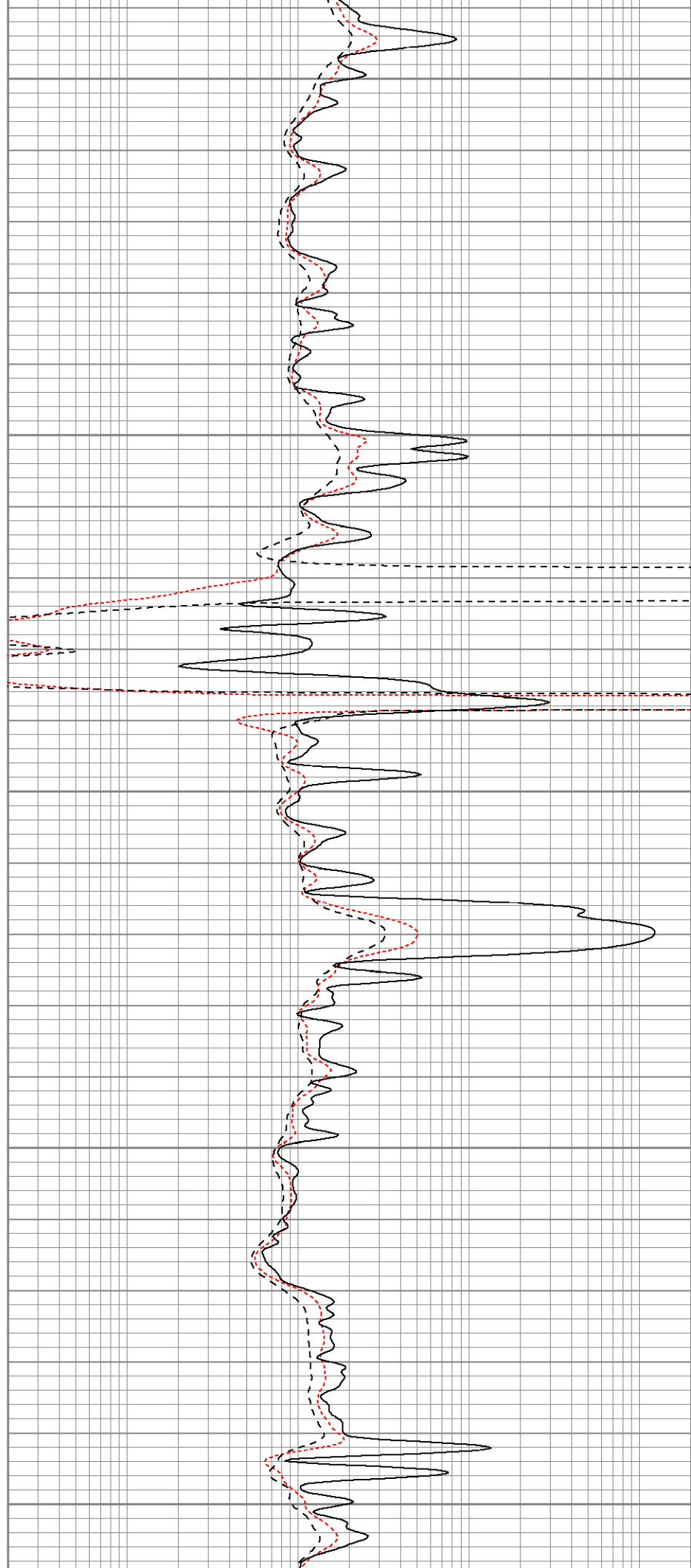
1550

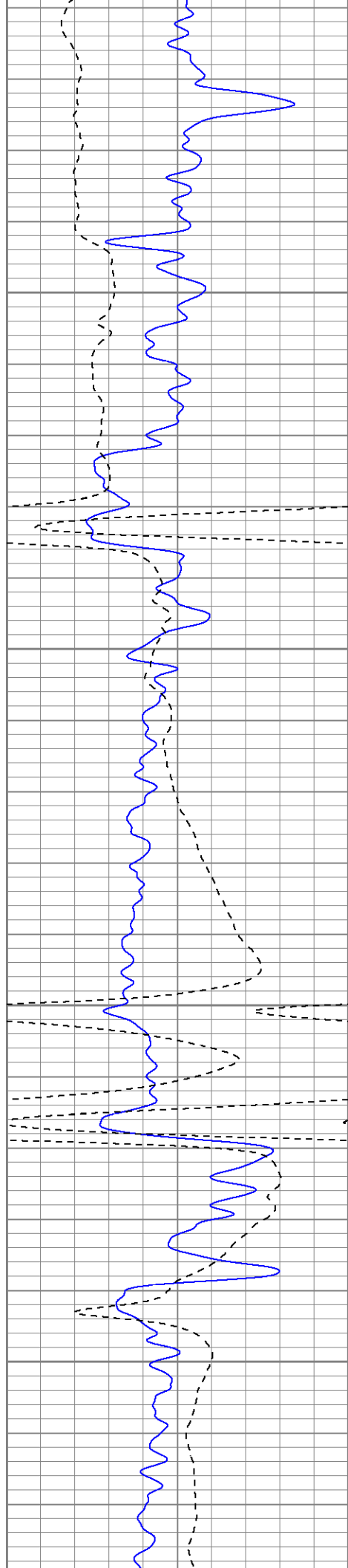
1600

1650

1700

1750



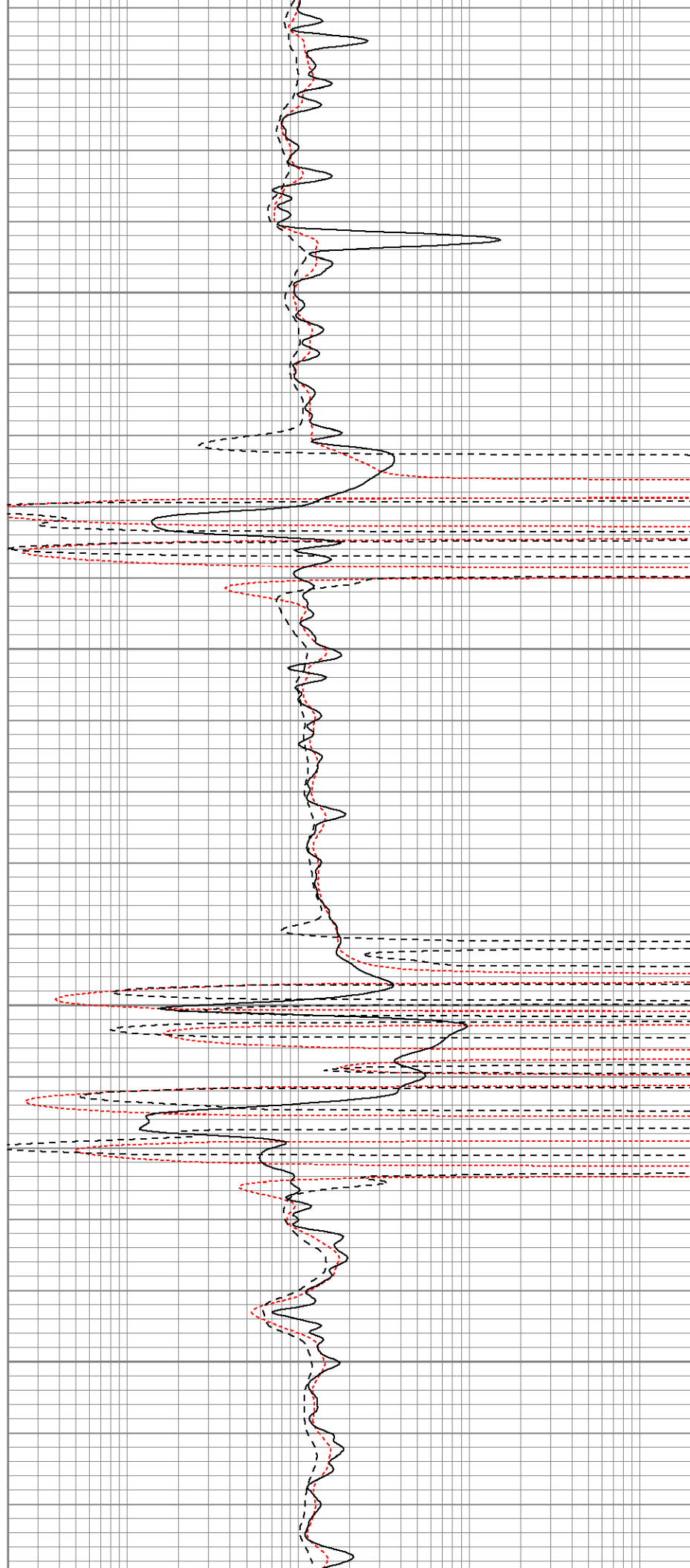


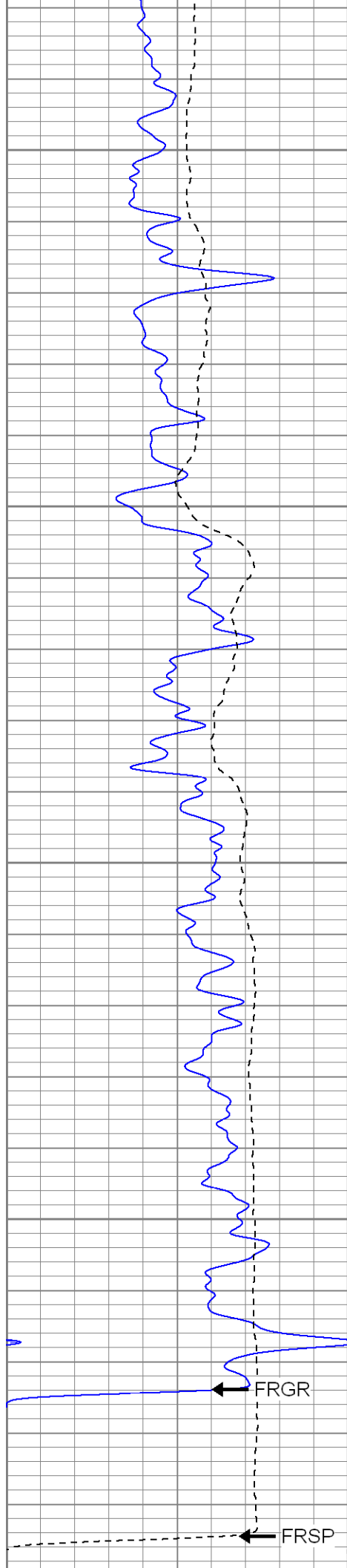
1800

1850

1900

1950





2000

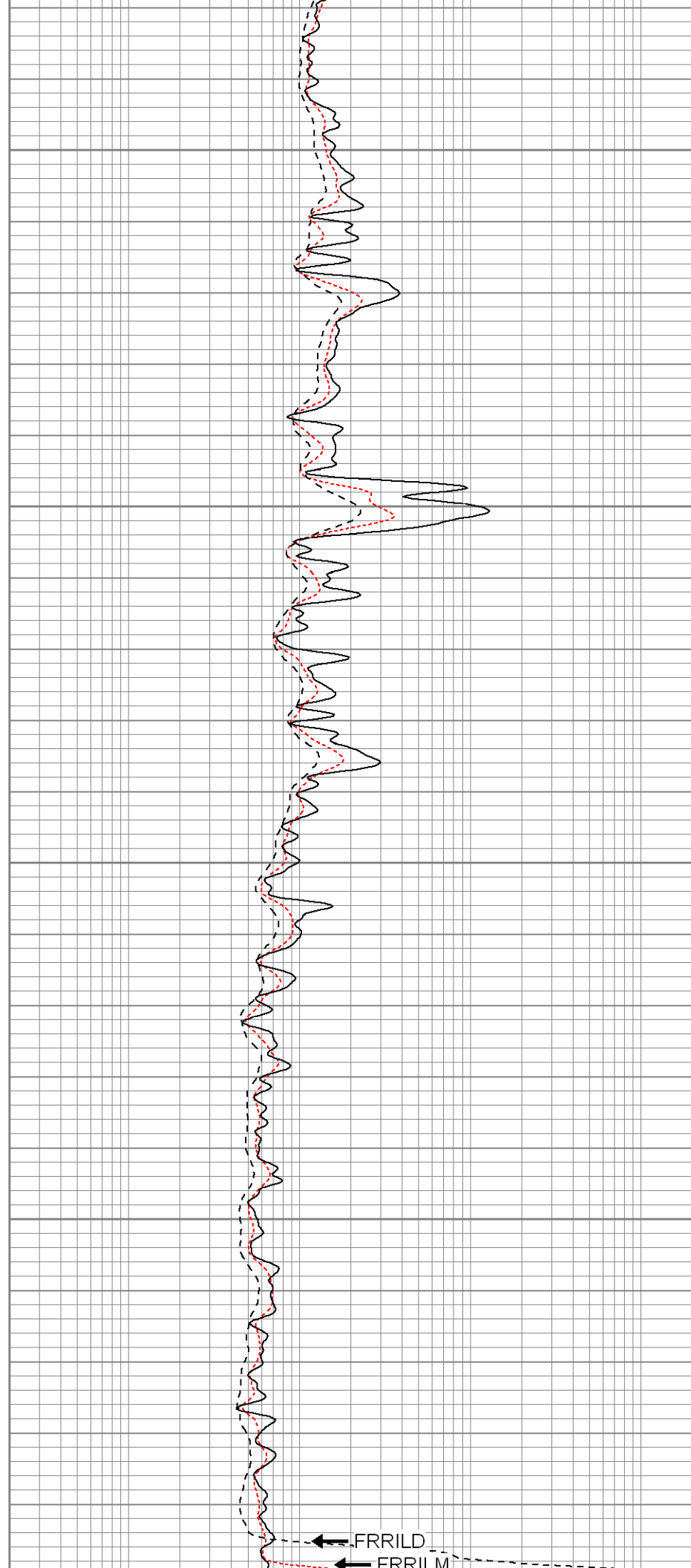
2050

2100

2150

FRGR

FRSP



FRRILD

FRRIM

0	GR (GAPI)	200
-200	SP (mV)	0

2200

0.2	RILM (Ohm-m)	2000
0.2	RILD (Ohm-m)	2000
0.2	RLL3 (Ohm-m)	2000



SUPERIOR

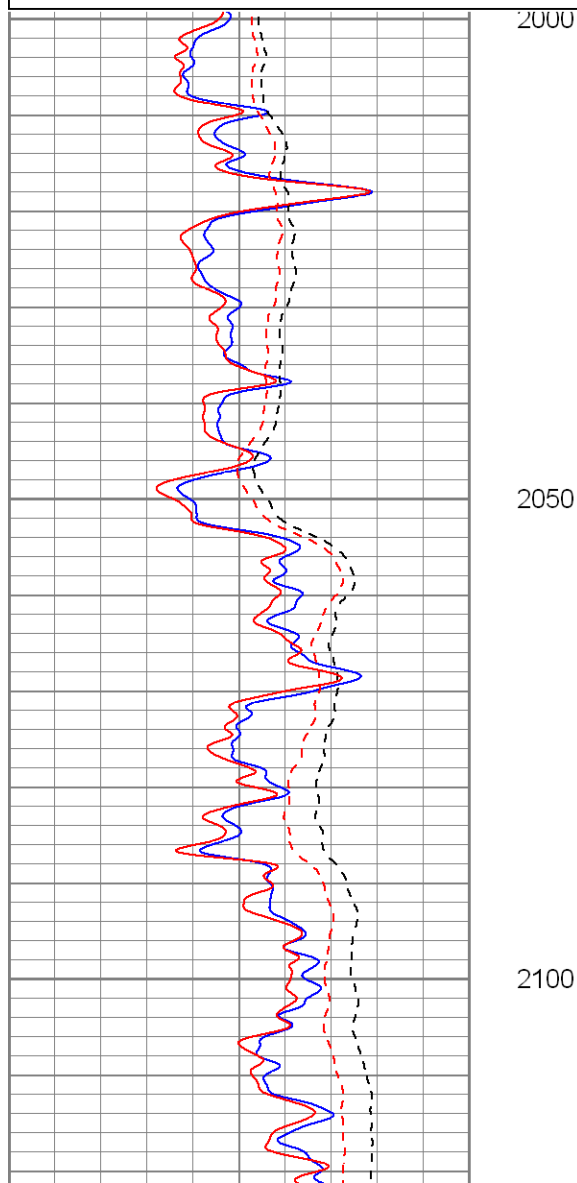
Black Lick, Pa.  
 Mercer, Pa.  
 Wooster, Oh.  
 Cleveland, Ok.  
 Trinidad, Co.

# Repeat Pass

Database File: xtoge3309.db  
 Dataset Pathname: pass1.1  
 Presentation Format: dil  
 Dataset Creation: Sat Mar 01 12:05:12 2008 by Calc Open-Cased 070814  
 Charted by: Depth in Feet scaled 1:240

0	GR (GAPI)	200
-200	SP (mV)	0
0	GR-repeat (GAPI)	200
-200	SP-repeat (mV)	0

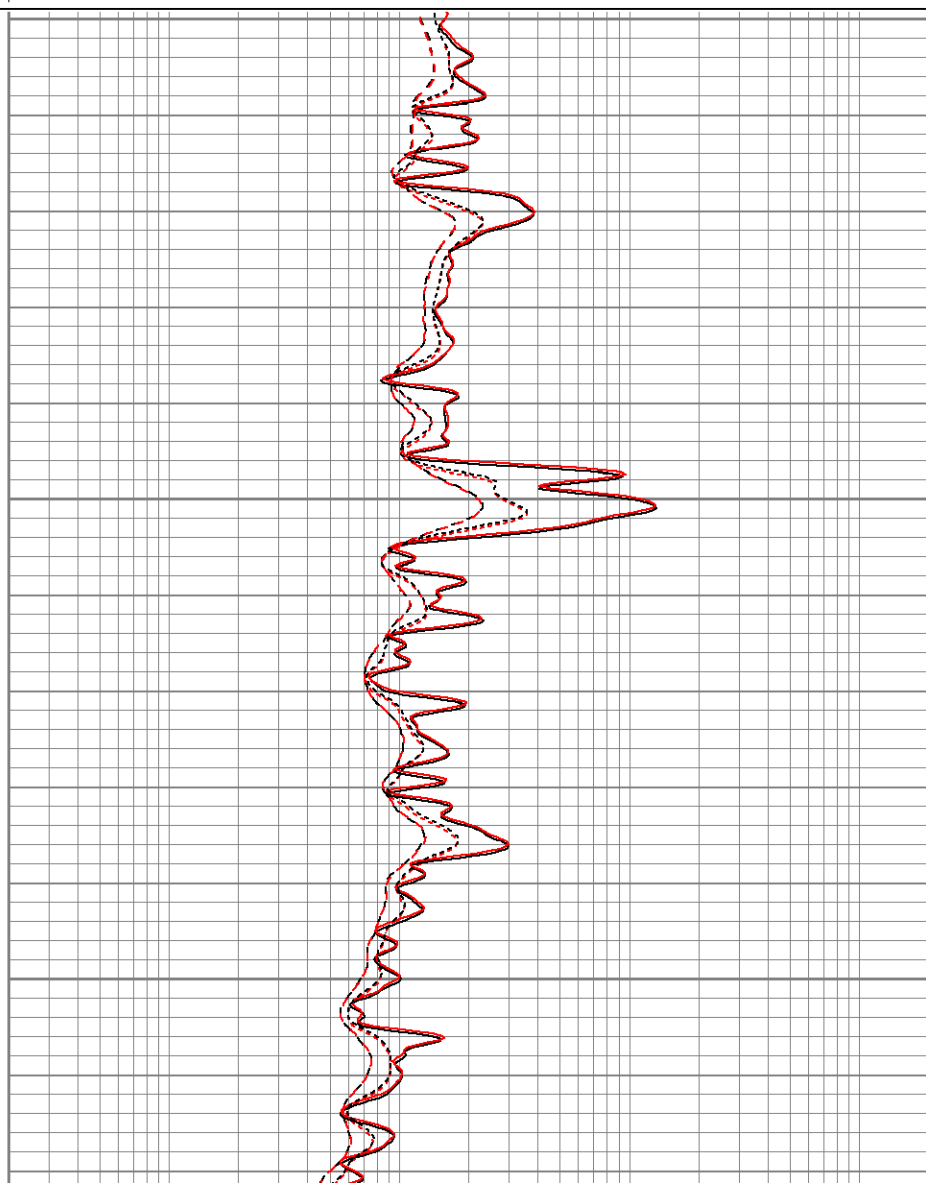
0.2	RILM (Ohm-m)	2000
0.2	RILD (Ohm-m)	2000
0.2	RLL3 (Ohm-m)	2000
0.2	RLL3-repeat (Ohm-m)	2000
0.2	RILM-repeat (Ohm-m)	2000
0.2	RILD-repeat (Ohm-m)	2000

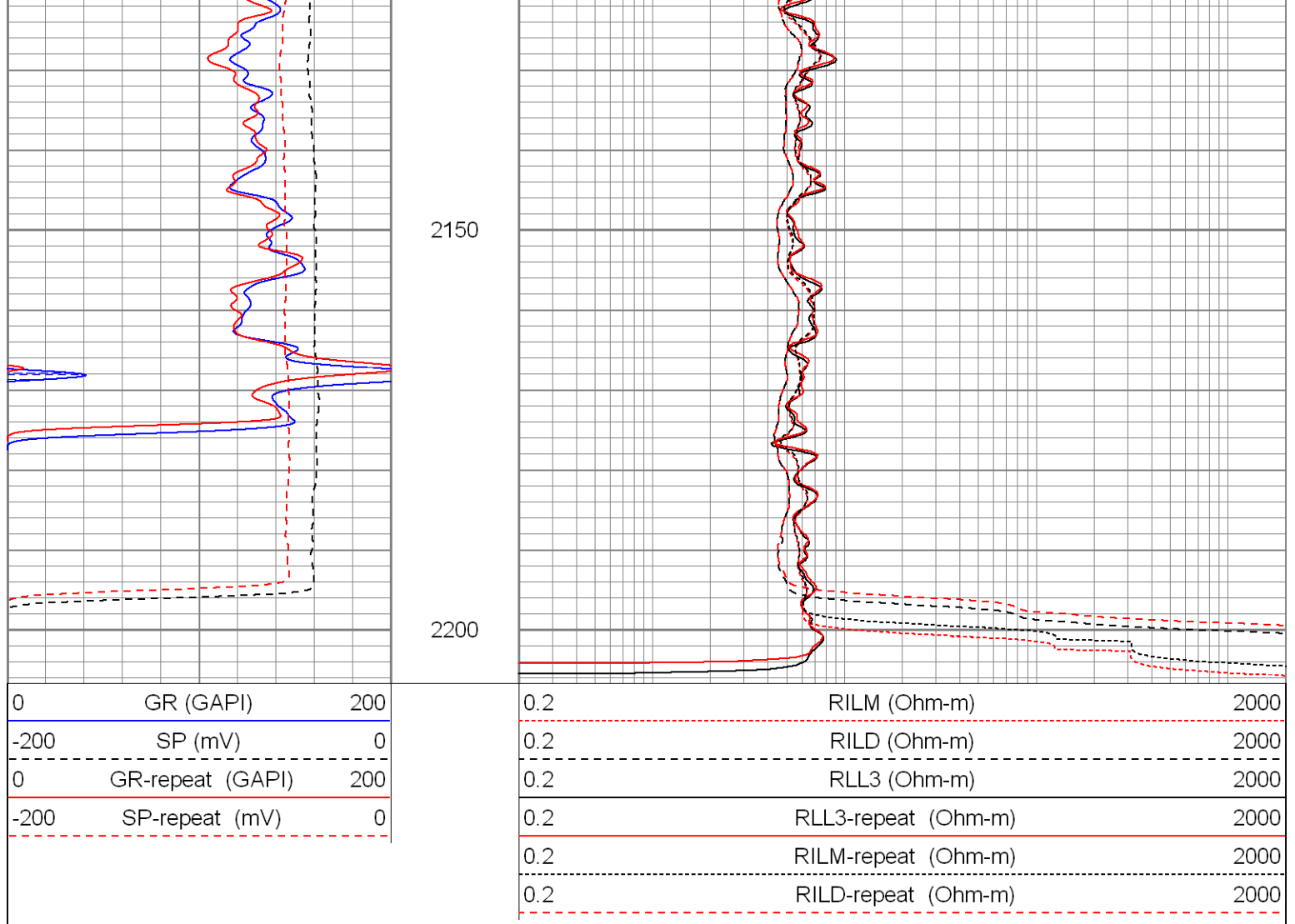


2000

2050

2100





### Calibration Report

Database File: xtoge3309.db  
 Dataset Pathname: pass1  
 Dataset Creation: Sat Mar 01 11:30:58 2008 by Log Open-Cased 070814

### Dual Induction Calibration Report

Serial-Model: 5375-G  
 Surface Cal Performed: Wed Feb 06 09:29:54 2008  
 Downhole Cal Performed: Wed Feb 06 09:31:14 2008

#### Surface Calibration

Readings				References			Results	
Loop:	Air	Loop		Air	Loop		m	b
Deep	0.002	0.622	V	0.000	500.000	mmho-m	806.307	-1.737
Medium	0.005	0.745	V	0.000	550.000	mmho-m	742.812	-3.450
Internal:	Zero	Cal		Zero	Cal		m	b
Deep	0.003	0.622	V	0.000	500.000	mmho-m	806.784	-2.176
Medium	0.005	0.745	V	0.000	550.000	mmho-m	743.382	-3.766

#### Downhole Calibration

Readings				References			Results	
Internal:	Zero	Cal		Zero	Cal		m	b

Deep	0.241	500.512	mmho-m	0.438	500.143	mmho-m	0.999	0.197
Medium	0.213	550.041	mmho-m	0.313	549.891	mmho-m	1.000	0.100
Shallow	2.508	0.009	V	500.000	2.000	Ohm-m	125.000	-3.000

Compensated Density Calibration Report

Serial-Model:	2118-poilex
Source / Verifier:	/
Master Calibration Performed:	Tue Feb 19 13:14:22 2008



Master Calibration					
	Density			Far Detector	Near Detector
Magnesium	1.710	g/cc		689.13	662.28 cps
Aluminum	2.590	g/cc		156.84	466.09 cps
	Spine Angle = 76.65			Density/Spine Ratio = 0.578	
	Size			Reading	
Small Ring	8.50	in		4.33	V
Large Ring	14.00	in		8.24	V

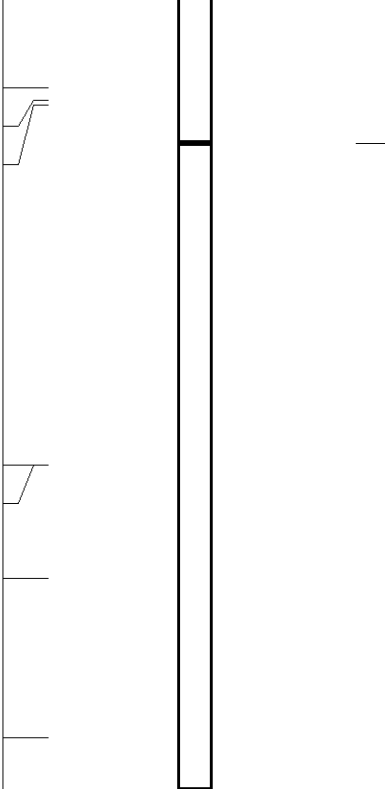
Gamma Ray Calibration Report

Serial Number:	2001	
Tool Model:	OH	
Performed:	Wed Feb 06 09:46:55 2008	
Calibrator Value:	1.0	GAPI
Background Reading:	0.0	cps
Calibrator Reading:	1.0	cps
Sensitivity:	0.2500	GAPI/cps

Neutron Calibration Report

Serial Number:	5145	
Tool Model:	G	
Performed:	Wed Feb 06 10:21:29 2008	
Calibrator Value:	1200	NAPI
Calibrator Reading:	1700	cps
Sensitivity:	1	NAPI/cps

Sensor	Offset (ft)	Schematic	Description	Len (ft)	OD (in)	Wt (lb)
NEU	36.89		None	0.75	1.50	5.00
			NEU-G (5145) Gearhart Epithermal	5.65	3.50	85.00
GR	31.05		GR-OH (2001) 2001	3.56	3.25	40.00
			GR-OH (2001) 2001	3.56	3.25	40.00

LSD	22.88		CDL-pollex (2118)	8.83	4.00	275.00
DCAL	22.47					
SSD	22.30					
CILD	10.60		DIL-G (5375)	21.05	4.00	345.00
SP	10.60		Gearhart			
CILM	6.89					
RLL3	1.70					
<div>Dataset: xtoge3309.db: field/well/run1/pass1</div> <div>Total Length: 39.84 ft</div> <div>Total Weight: 750.00 lb</div> <div>O.D. 4.00 in</div>						