



SUPERIOR
WELL SERVICES
Black Lick, Pa.
Mercer, Pa.
Wooster, Oh.
Cleveland, Ok.
Trinidad, Co.

**CEMENT BOND
GAMMA RAY
1000 PSI**

Company XTO Energy Inc.
Well Golden Eagle 33-15
Field Purgatorie River
County Las Animas
State CO

Company XTO Energy Inc.
Well Golden Eagle 33-15
Field Purgatorie River
County Las Animas
State CO

Location: API #: 05 071 09480 00

530' FSL & 2121' FEL

SEC 33 TWP 33S RGE 67W

Permanent Datum Ground Level Elevation 7705'
Log Measured From Ground Level
Drilling Measured From Ground Level

Other Services
PRES
CONTROL

Elevation

K.B. -----
D.F. -----
G.L. 7705'

Date

2/29/08

Run Number

one

Depth Driller

2300'

Depth Logger

2181'

Bottom Logged Interval

2177'

Top Log Interval

Surf.

Open Hole Size

7 7/8"

Type Fluid

water

Density / Viscosity

///

Max. Recorded Temp.

134F

Estimated Cement Top

1640'

Time Well Ready

ROA

Time Logger on Bottom

12:05

Equipment Number

0703

Location

Trinidad

Recorded By

Worley

Witnessed By

Mr. Dominguez

Borehole Record

Bit

From

To

Size

Weight

From

To

Tubing Record

Size

Weight

From

To

Size

Weight

From

To

Size

Weight

From

To

Size

Weight

From

To

Size

Weight

From

To

Size

Weight

From

To

Size

Weight

From

To

Size

Weight

From

To

Size

Weight

From

To

Size

Weight

From

To

Size

Weight

From

To

Size

Weight

From

To

Size

Weight

From

To

Size

Weight

From

To

Size

Weight

From

To

Size

Weight

From

To

Size

Weight

From

To

Size

Weight

From

To

Size

Weight

From

To

Size

Weight

From

To

Size

Weight

From

To

Size

Weight

From

To

Size

Weight

From

To

Size

Weight

From

To

Size

Weight

From

To

Size

Weight

From

To

Size

Weight

From

To

Size

Weight

From

To

Size

Weight

From

To

Size

Weight

From

To

Size

Weight

From

To

Size

Weight

From

To

Size

Weight

From

To

Size

Weight

From

To

Size

Weight

From

To

Size

Weight

From

To

Size

Weight

From

To

Size

Weight

From

To

Size

Weight

From

To

Size

Weight

From

To

Size

Weight

From

To

Size

Weight

From

To

Size

Weight

From

To

Size

Weight

From

To

Size

Weight

From

To

Size

Weight

From

To

Size

Weight

From

To

Size

Weight

From

To

Size

Weight

From

To

Size

Weight

From

To

Size

Weight

From

To

Size

Weight

From

To

Size

Weight

From

To

Size

Weight

From

To

Size

Weight

From

To

Size

Weight

From

To

Size

Weight

From

To

Size

Weight

From

To

Size

Weight

From

To

Size

Weight

From

To

Size

Weight

From

To

Size

Weight

From

To

Size

Weight

From

To

Size

Weight

From

To

Size

Weight

From

To

Size

Weight

From

To

Size

Weight

From

To

Size

Weight

From

To

Size

Weight

From

To

Size

Weight

From

To

Size

Weight

From

To

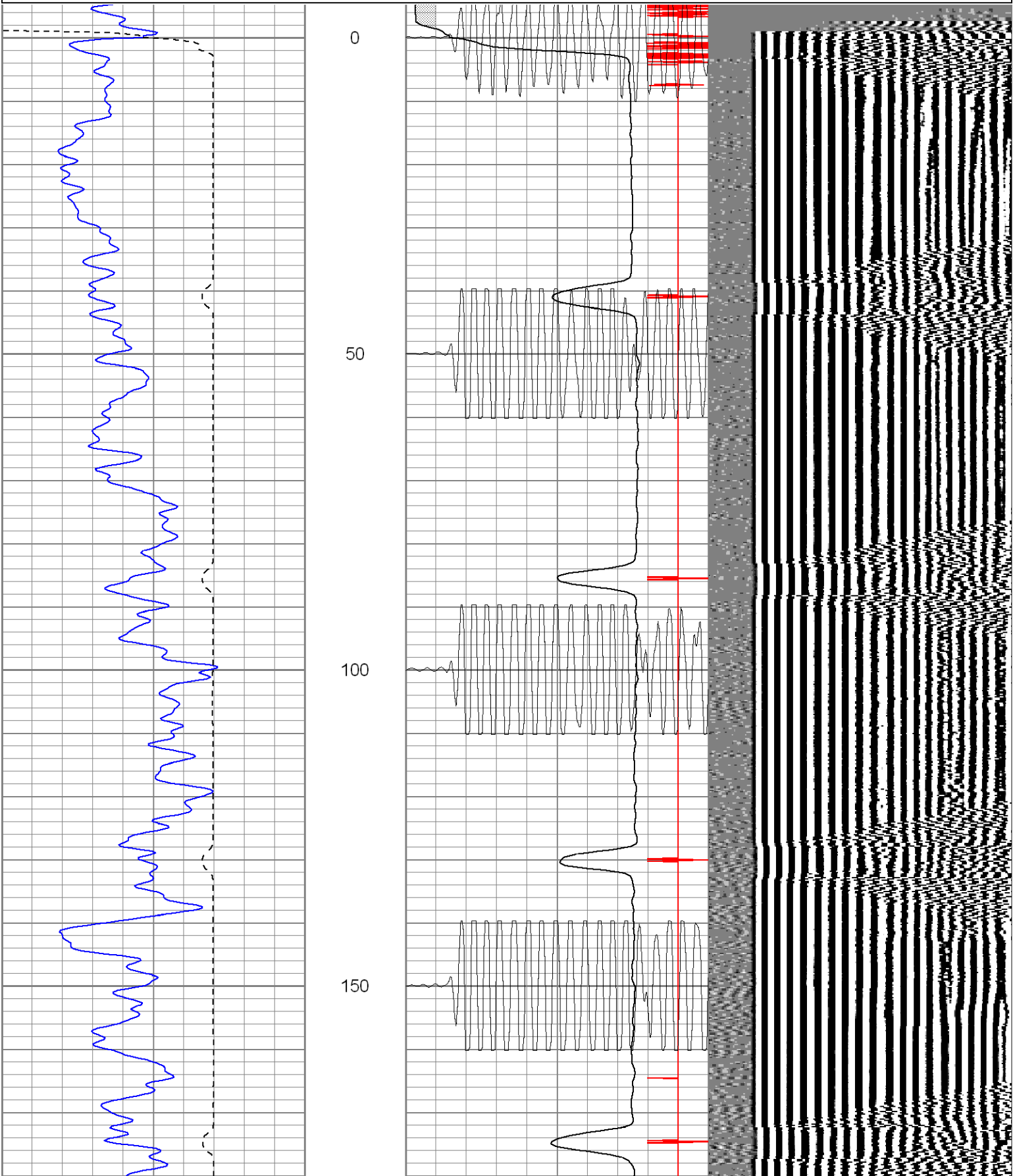
Size

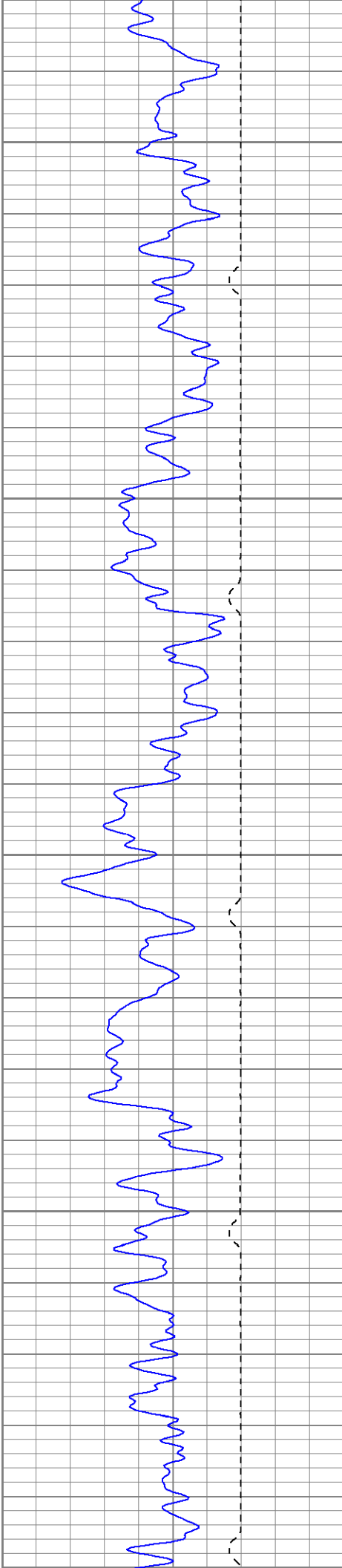
Weight

From

Database File: ge33-15b22908.db
Dataset Pathname: pass2.1
Presentation Format: cblrt
Dataset Creation: Fri Feb 29 13:10:15 2008 by Calc Open-Cased 071220
Charted by: Depth in Feet scaled 1:240

0	GR (GAPI)	200	0	AMP3 (mV)	100	200	CBL5	1200
400	TT3 (usec)	200	18	CCL	-2			
			200	CBL5	1200			





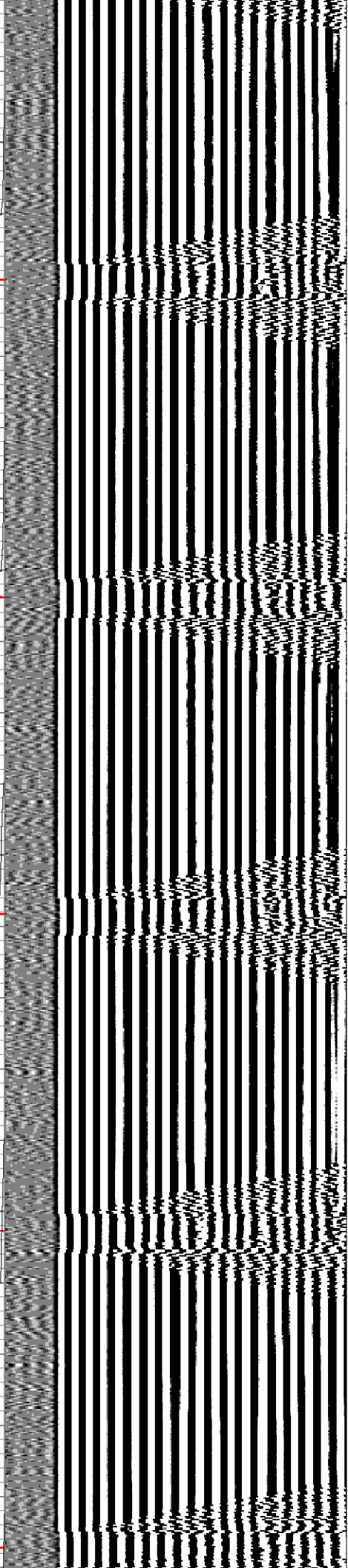
200

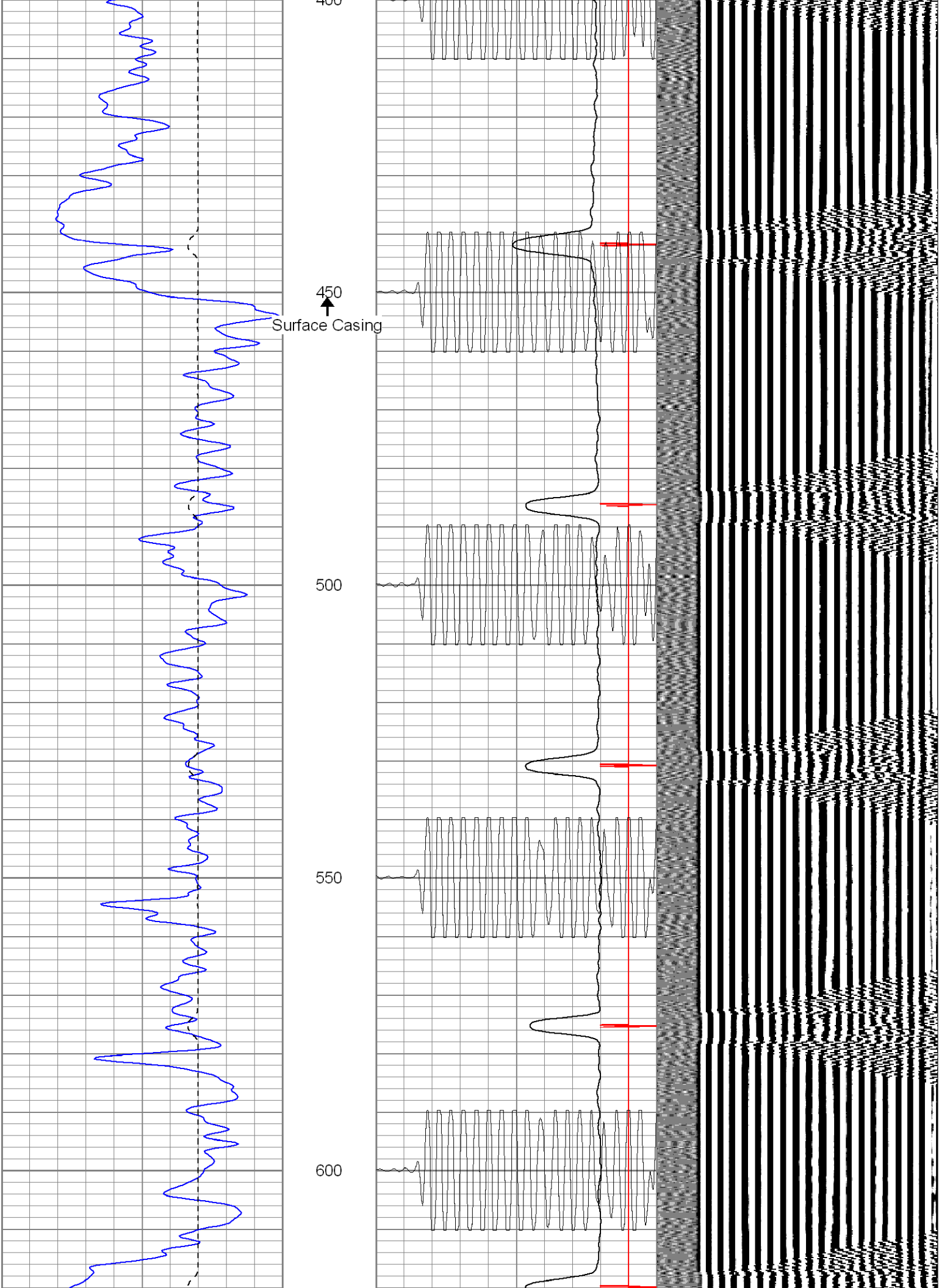
250

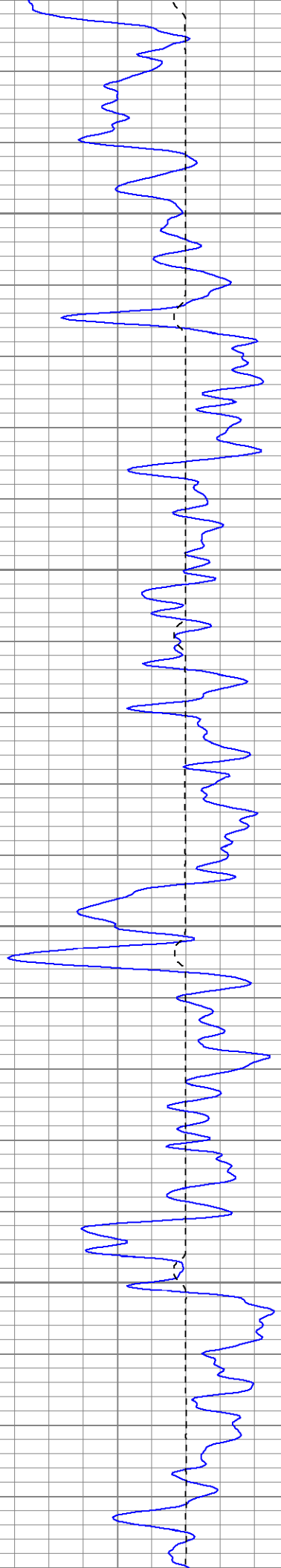
300

350

400





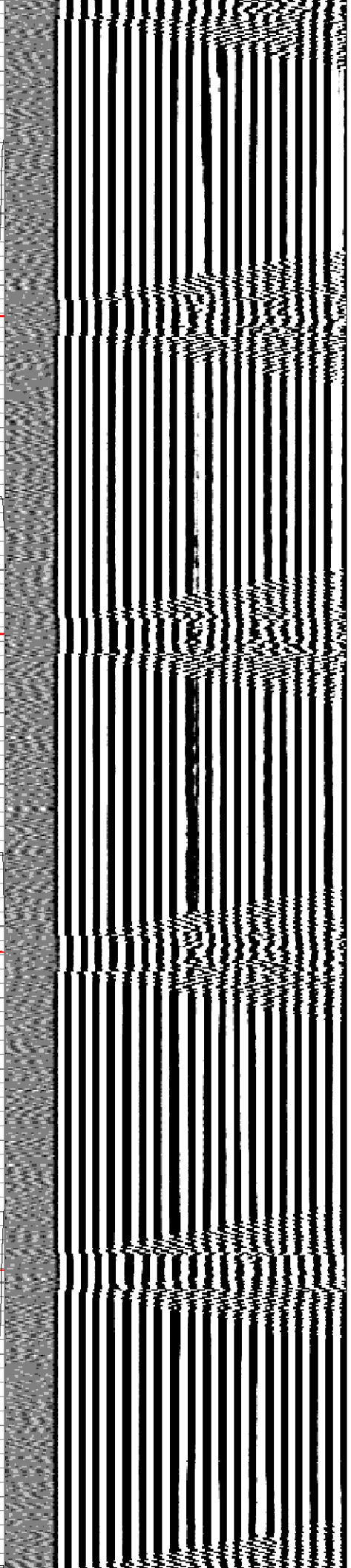
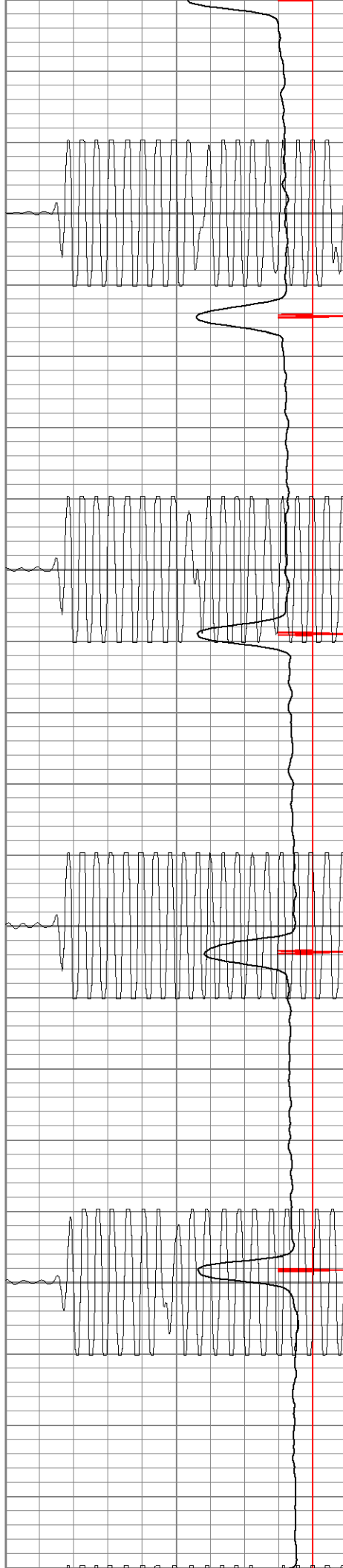


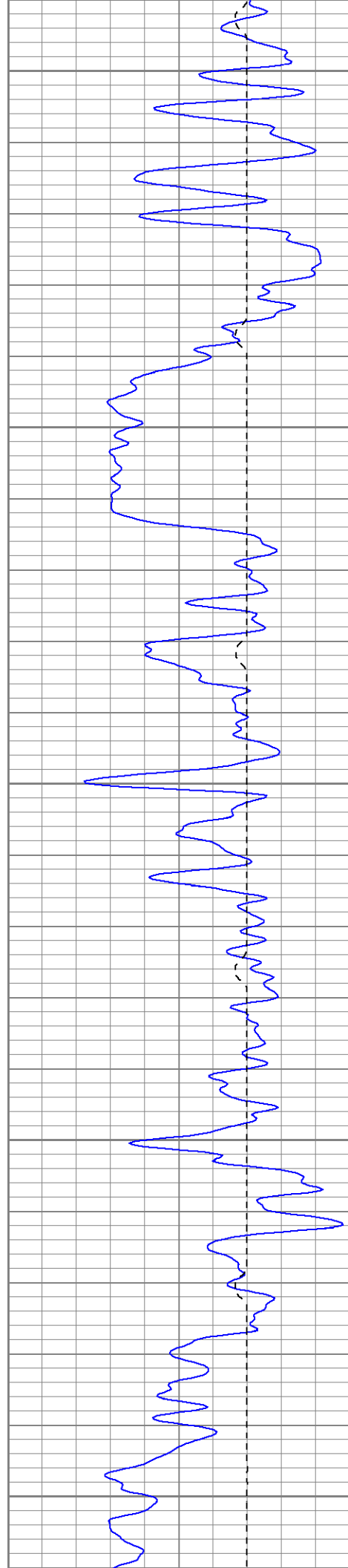
650

700

750

800





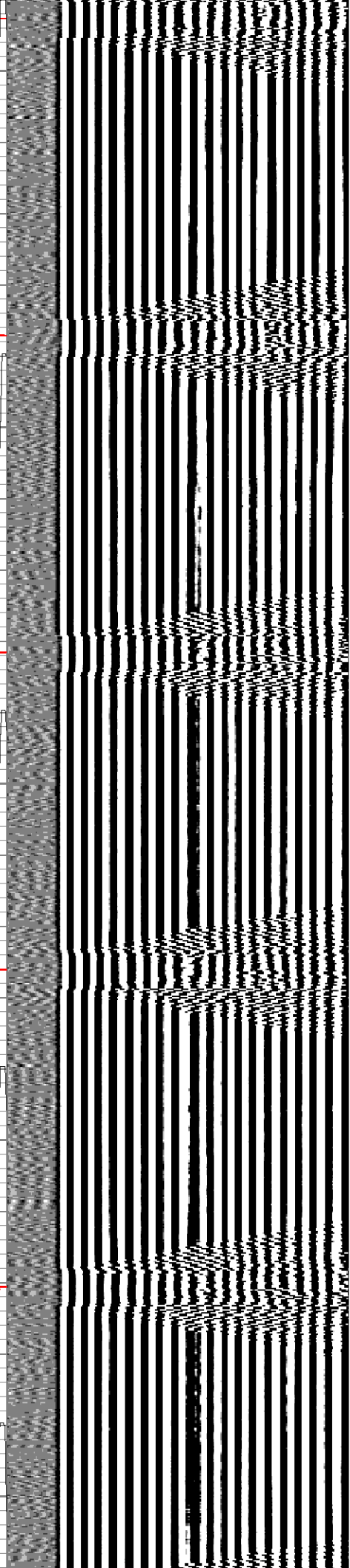
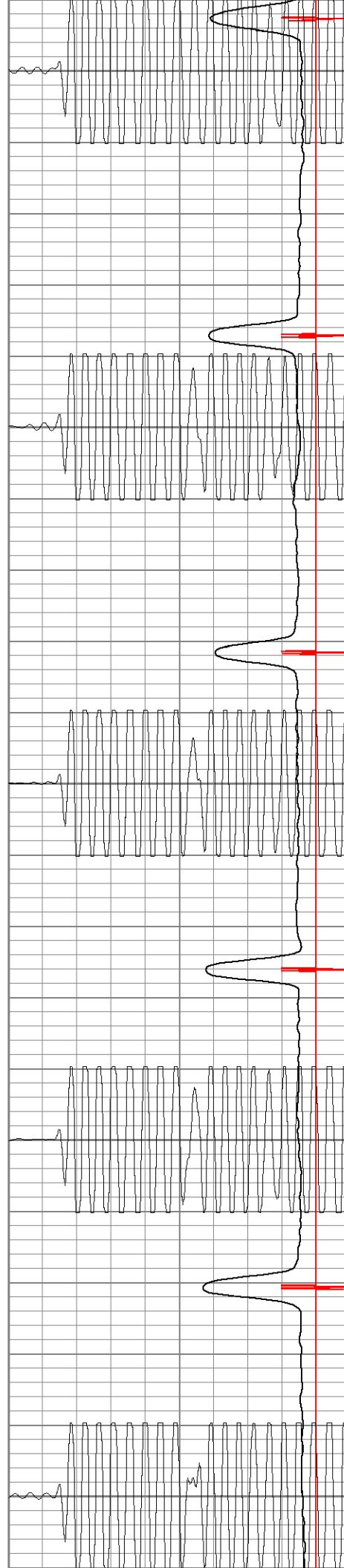
850

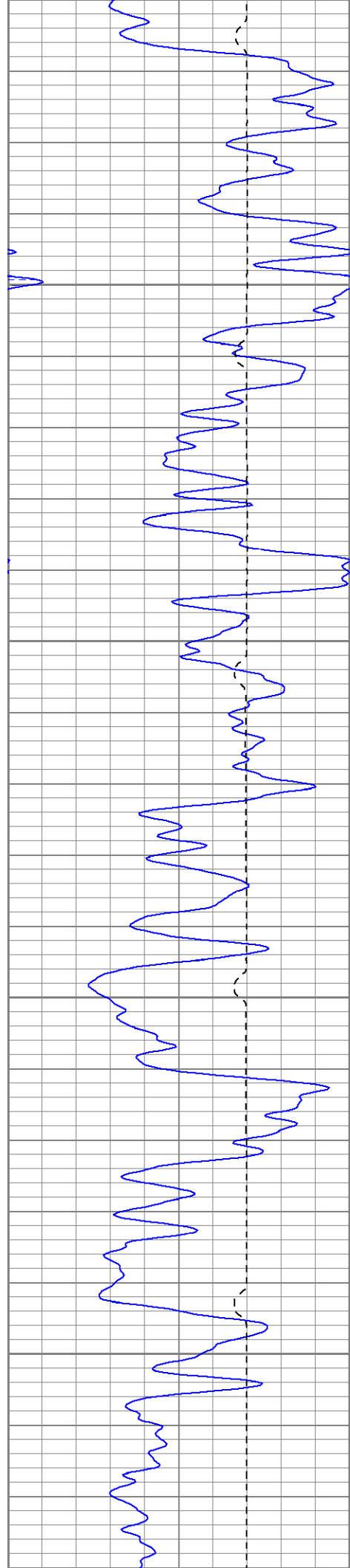
900

950

1000

1050



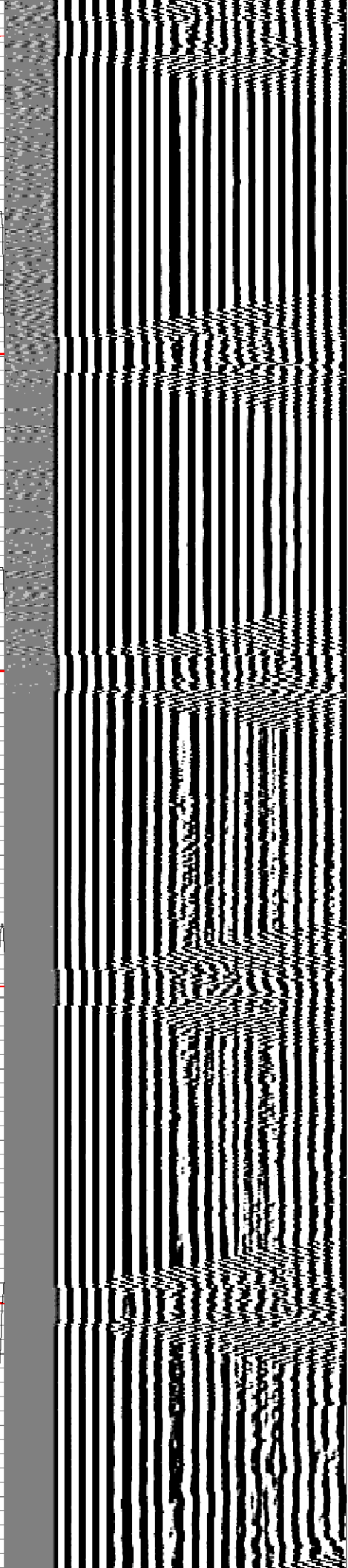
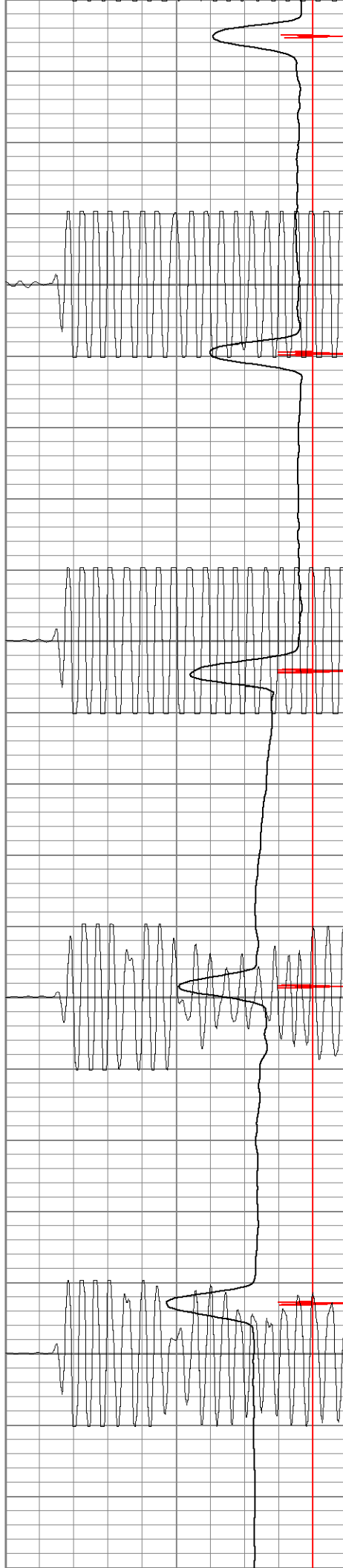


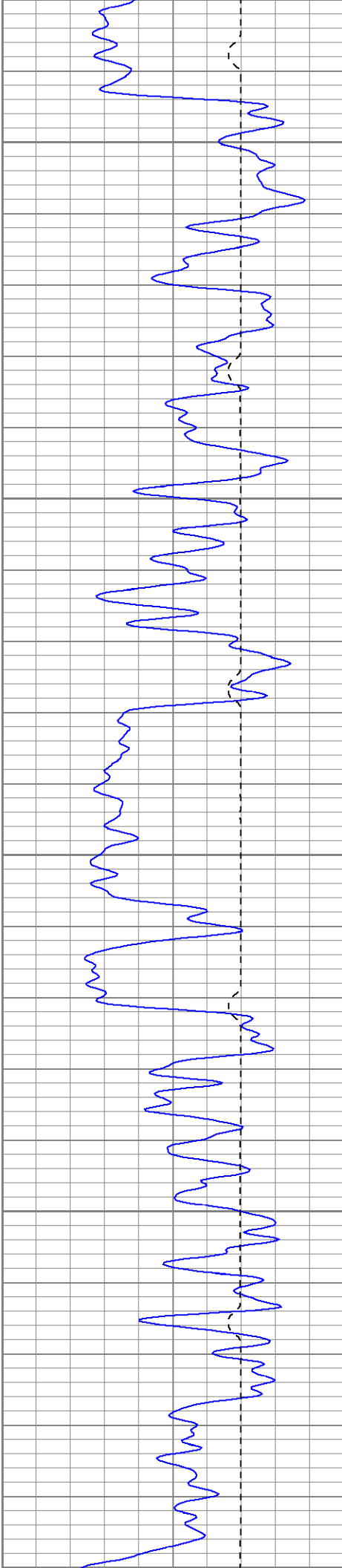
1100

1150

1200

1250





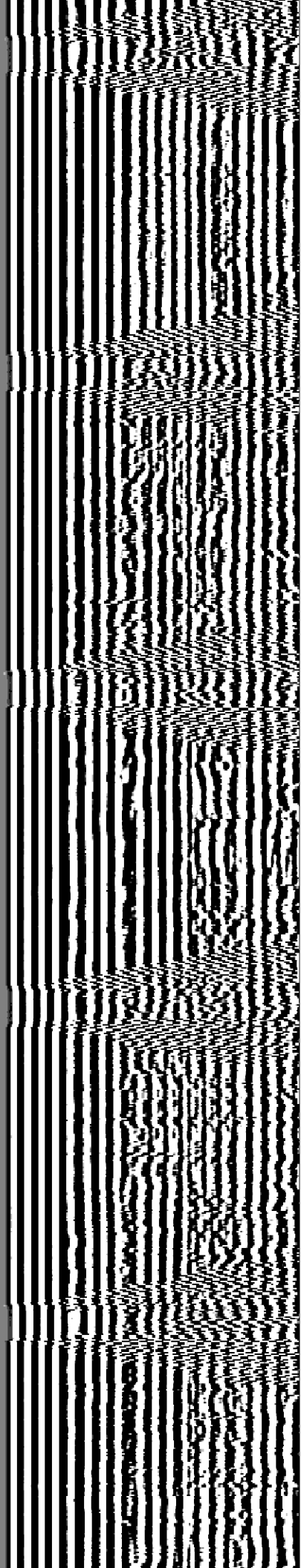
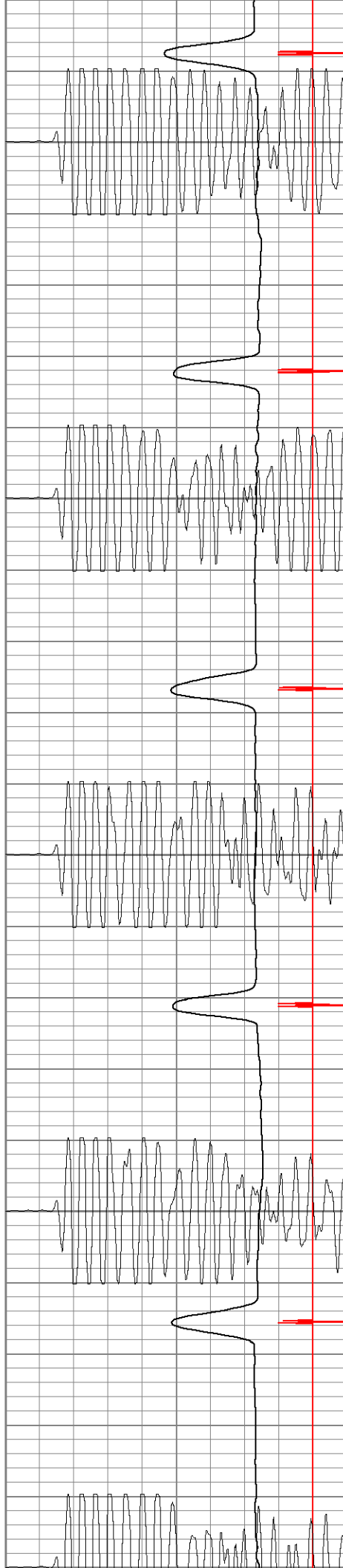
1300

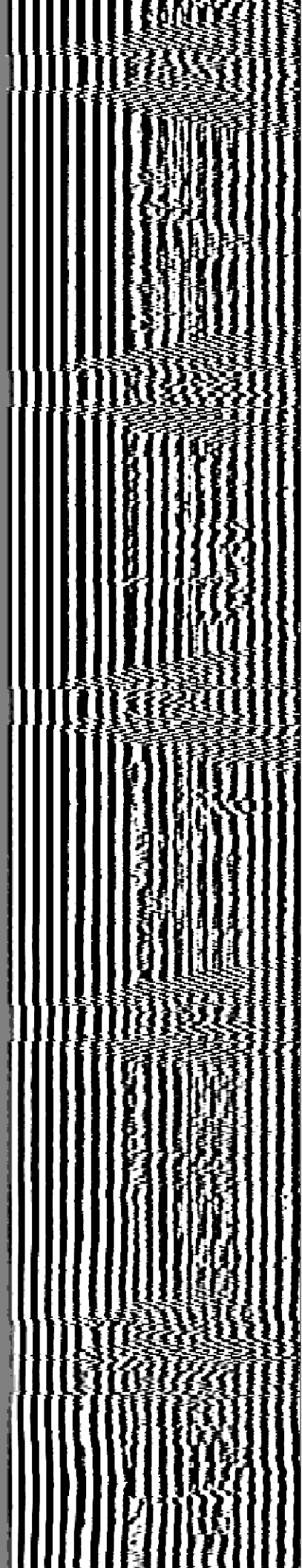
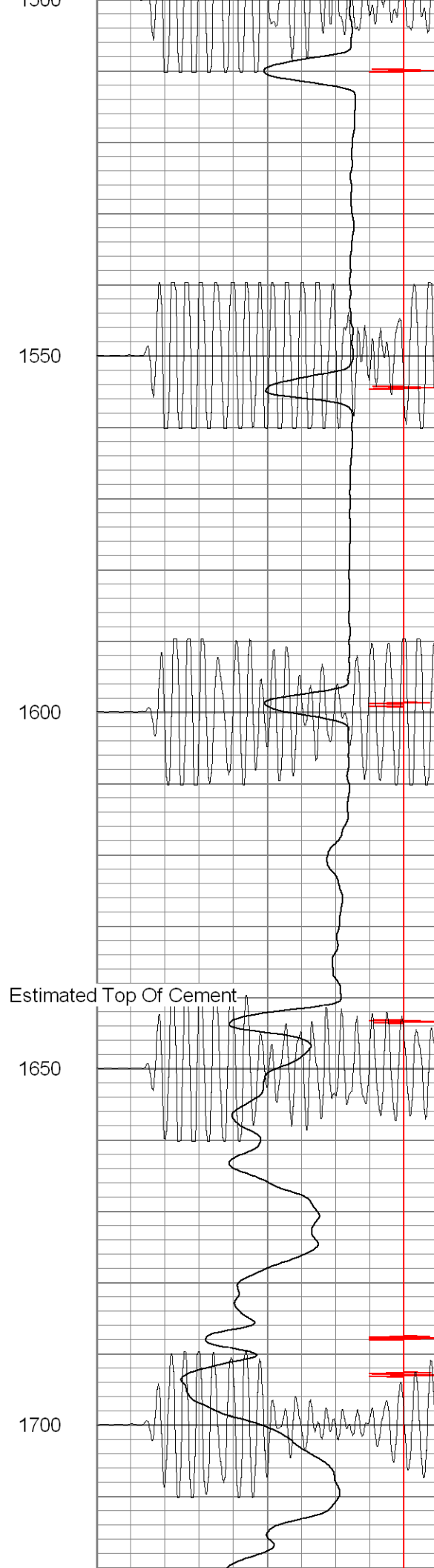
1350

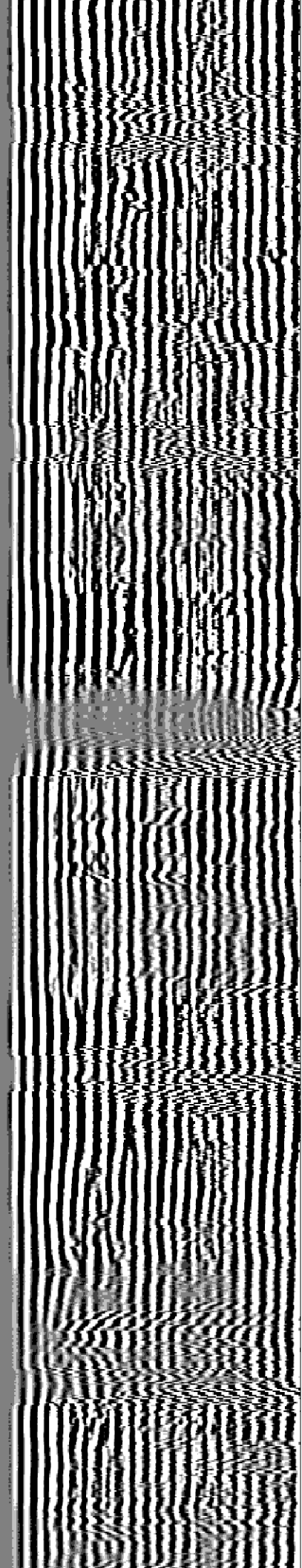
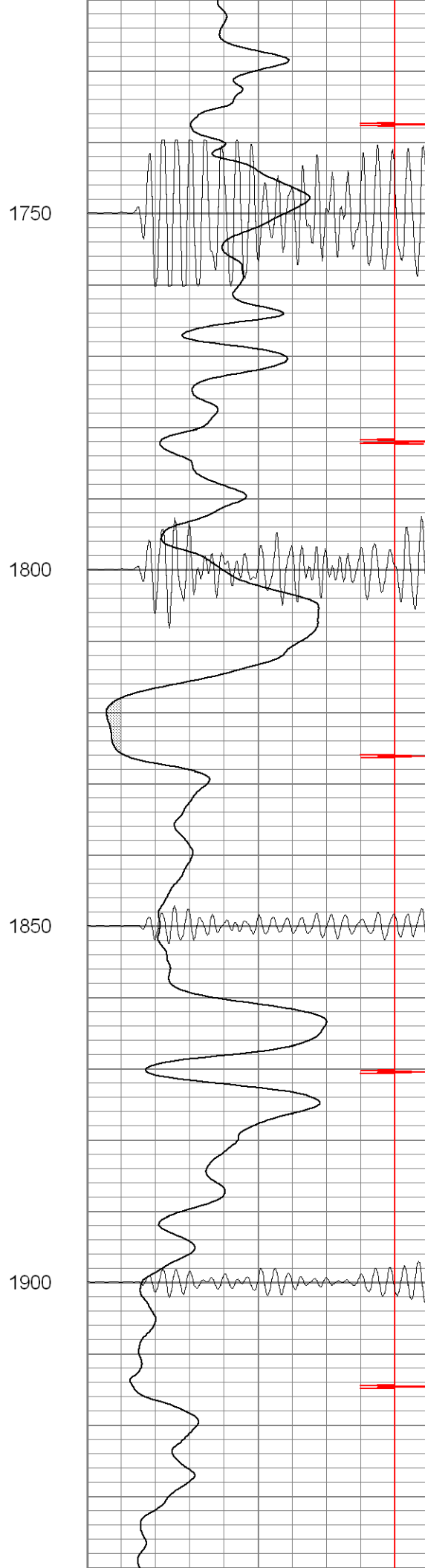
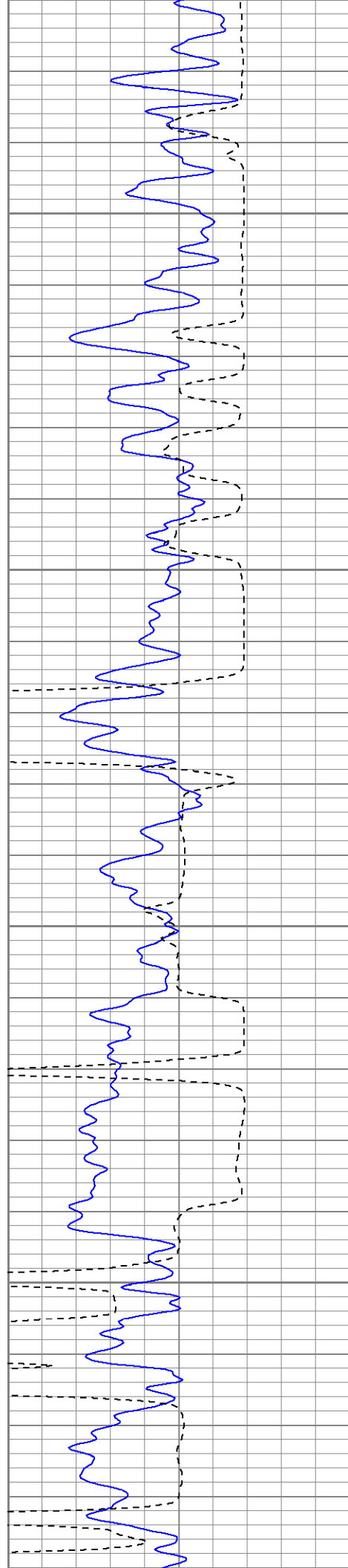
1400

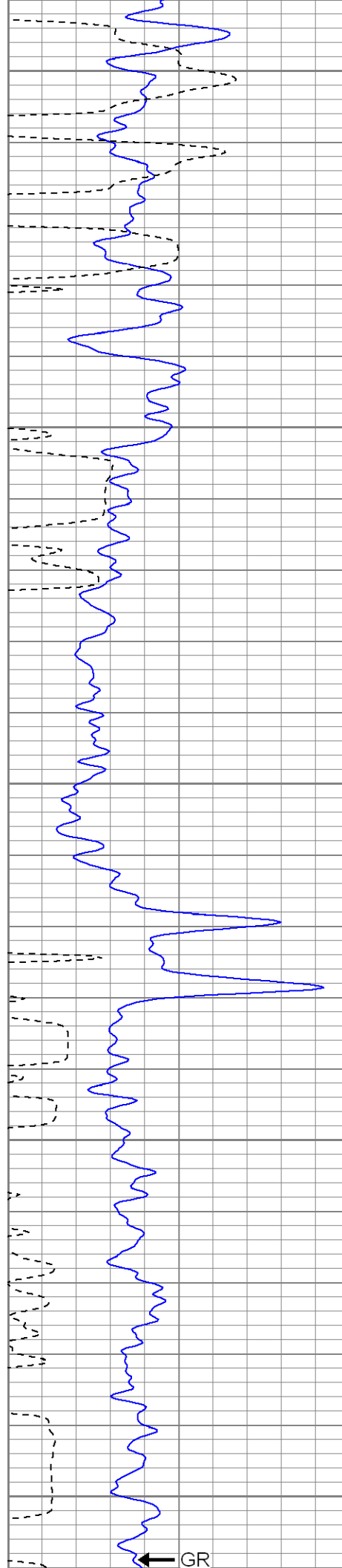
1450

1500









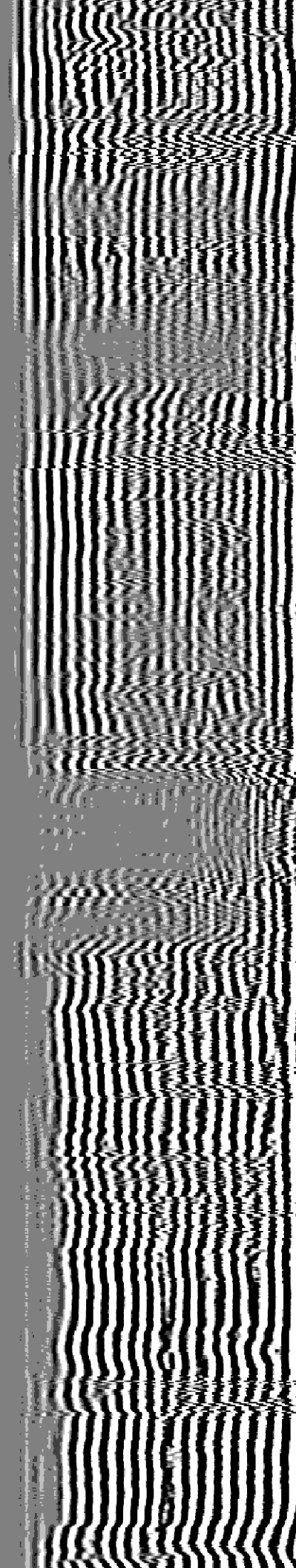
1950

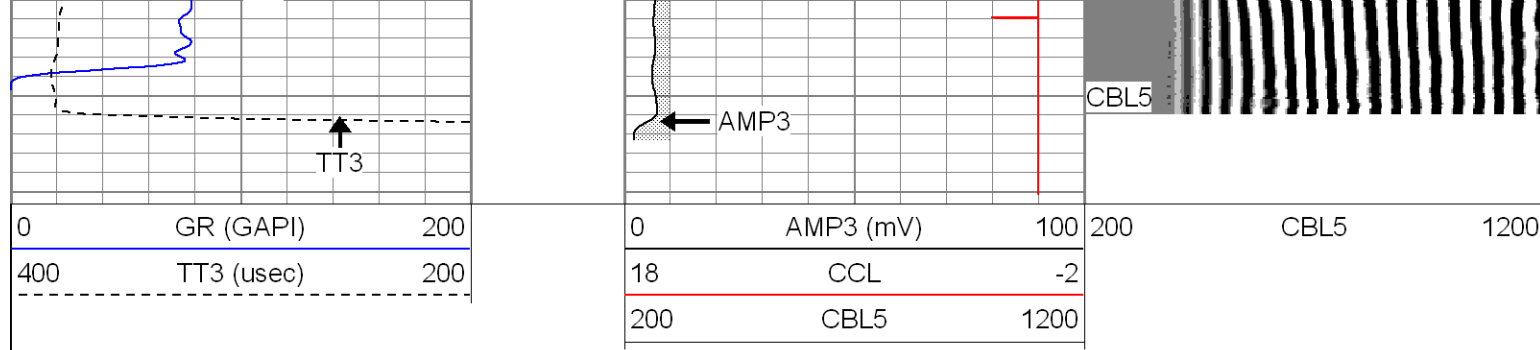
2000

2050

2100

2150



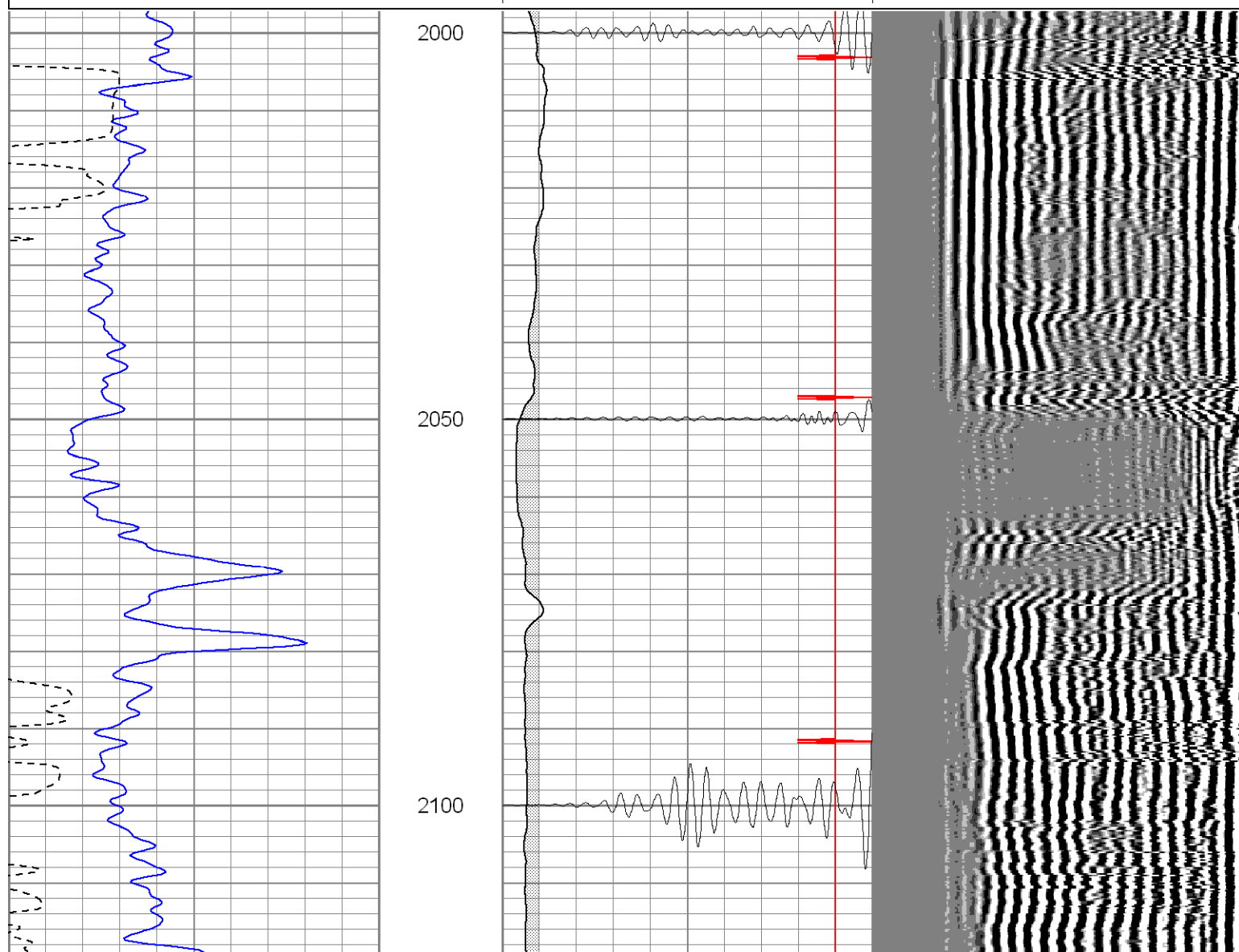
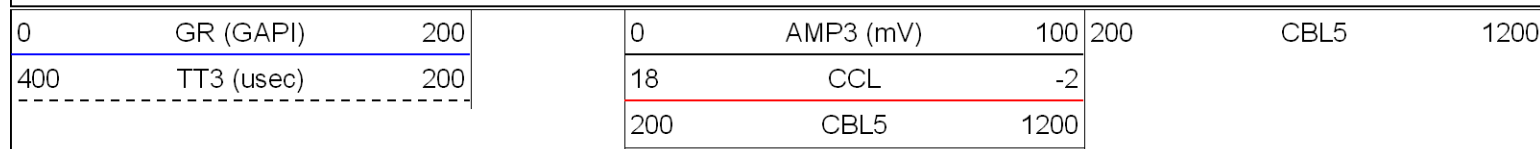


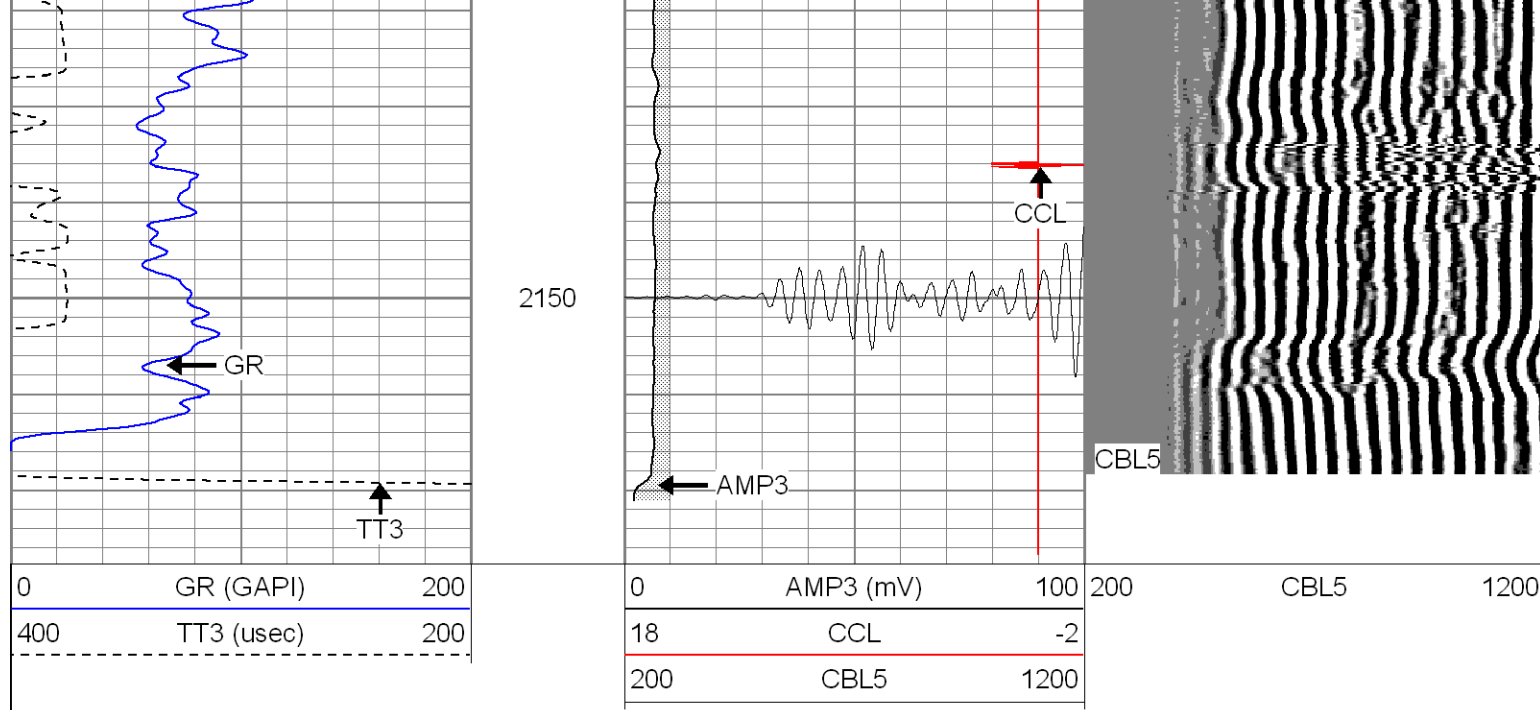
SUPERIOR

Black Lick, Pa.
Mercer, Pa.
Wooster, Oh.
Cleveland, Ok.
Trinidad, Co.

Repeat Section 0 PSI

Database File: ge33-15b22908.db
Dataset Pathname: pass1.1
Presentation Format: cblrt
Dataset Creation: Fri Feb 29 13:11:58 2008 by Calc Open-Cased 071220
Charted by: Depth in Feet scaled 1:240





Calibration Report

Database File: ge33-15b22908.db
 Dataset Pathname: pass1.1
 Dataset Creation: Fri Feb 29 13:11:58 2008 by Calc Open-Cased 071220

Cement Bond Log Calibration Report

Serial Number:	Titan5		
Tool Model:	T5		
Performed:	Fri Feb 29 09:27:54 2008		
Depth:	0	ft	
Casing Diameter:	0	in	
	3' Spacing	5' Spacing	
Signal Zero:	0	0	mV
Calibrated Amplitude:	85	85	mV
Reading at Signal Zero:	-0.04	0.0081543	V
Reading in Free Pipe:	1.5	2.45	V
Gain:	55.1948	34.8097	
Offset:	2.20779	-0.283849	

Gamma Ray Calibration Report

Serial Number:	Titan5	
Tool Model:	T2	
Performed:	Fri Feb 29 09:28:05 2008	
Calibrator Value:	1.0	GAPI
Background Reading:	0.0	cps
Calibrator Reading:	1.0	cps
Sensitivity:	1.1000	GAPI/cps