



SUPERIOR
Black Lick, Pa.
Mercer, Pa.
Wooster, Oh.
Cleveland, Ok.
Trinidad, Co.

DUAL INDUCTION LOG

Company XTO Energy Inc.
Well Golden Eagle 33-15
Field Purgatoire River
County Las Animas State Colorado

Location: API # : 05 071 09480 00

530' FSL & 2121' FEL

SEC 33 TWP 33S RGE 67W

Permanent Datum Ground Level Elevation 7705'
Log Measured From Ground Level
Drilling Measured From Ground Level

Other Services
CDL
NEUTRON
Elevation
K.B. -----
D.F. -----
G.L. 7705'

Date 2-27-08

Run Number One

Depth Driller 2300'

Depth Logger 2304'

Bottom Logged Interval 2302'

Top Log Interval Surface Casing

Casing Driller 8 5/8" @ 451'

Casing Logger 451'

Bit Size 7 7/8"

Type Fluid in Hole Water

Density / Viscosity ///

pH / Fluid Loss ///

Source of Sample ///

Rm @ Meas. Temp ///

Rmf @ Meas. Temp ///

Rmc @ Meas. Temp ///

Source of Rmf / Rmc ///

Rm @ BHT ///

Time Circulation Stopped 10:00 A.M.

Time Logger on Bottom 1:50 P.M.

Maximum Recorded Temperature 119 DEG F

Equipment Number T697

Location Trinidad

Recorded By J. Cappellucci

Witnessed By Mr. Dalton King

<<< Fold Here >>>

All interpretations are opinions based on inferences from electrical or other measurements and we cannot and do not guarantee the accuracy or correctness of any interpretation, and we shall not, except in the case of gross or willful negligence on our part, be liable or responsible for any loss, costs, damages, or expenses incurred or sustained by anyone resulting from any interpretation made by any of our officers, agents or employees. These interpretations are also subject to our general terms and conditions set out in our current Price Schedule.

Comments

Well Directions:
1st Bosque Entrance to Cherry Canyon, Past Compressor Station 5,
Up to first 4 way, stay left, take first right to location.

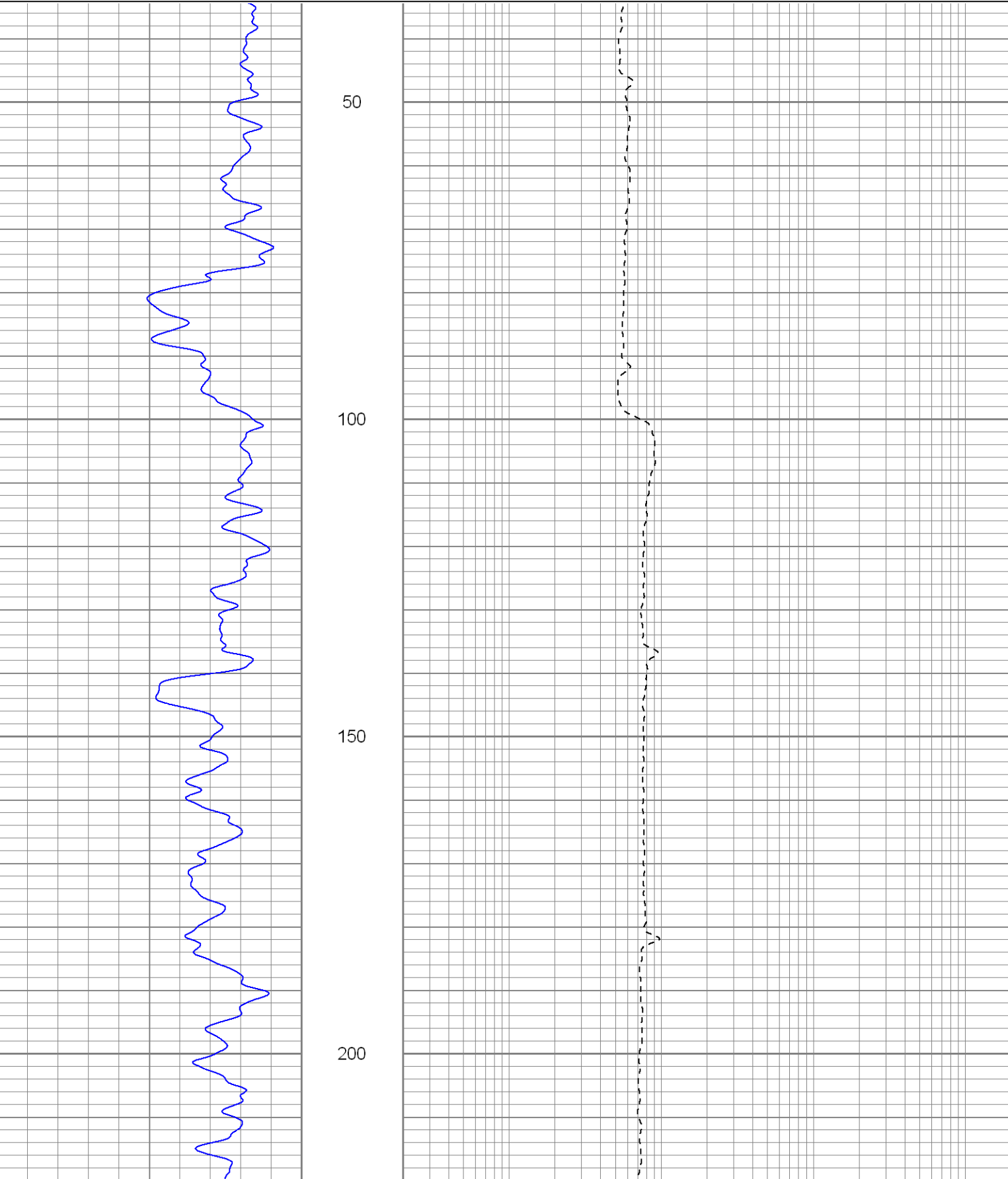


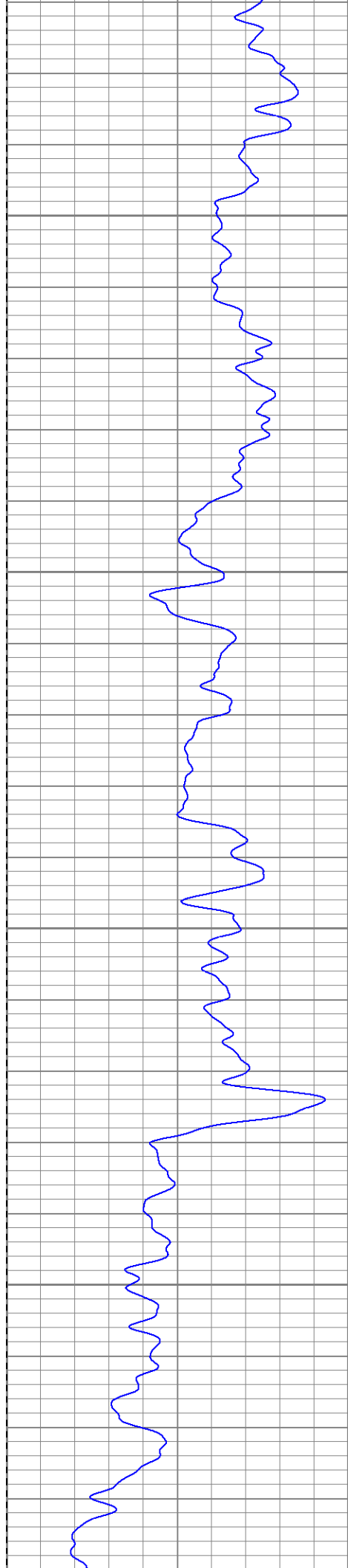
SUPERIOR
Black Lick, Pa.
Mercer, Pa.
Wooster, Oh.
Cleveland, Ok.
Trinidad, Co.

Main Pass

Database File: xtoge3315.db
Dataset Pathname: pass3.1
Presentation Format: dil
Dataset Creation: Wed Feb 27 16:45:37 2008 by Calc Open-Cased 070814
Charted by: Depth in Feet scaled 1:240

0	GR (GAPI)	200	0.2	RILM (Ohm-m)	2000
-200	SP (mV)	0	0.2	RILD (Ohm-m)	2000
			0.2	RLL3 (Ohm-m)	2000



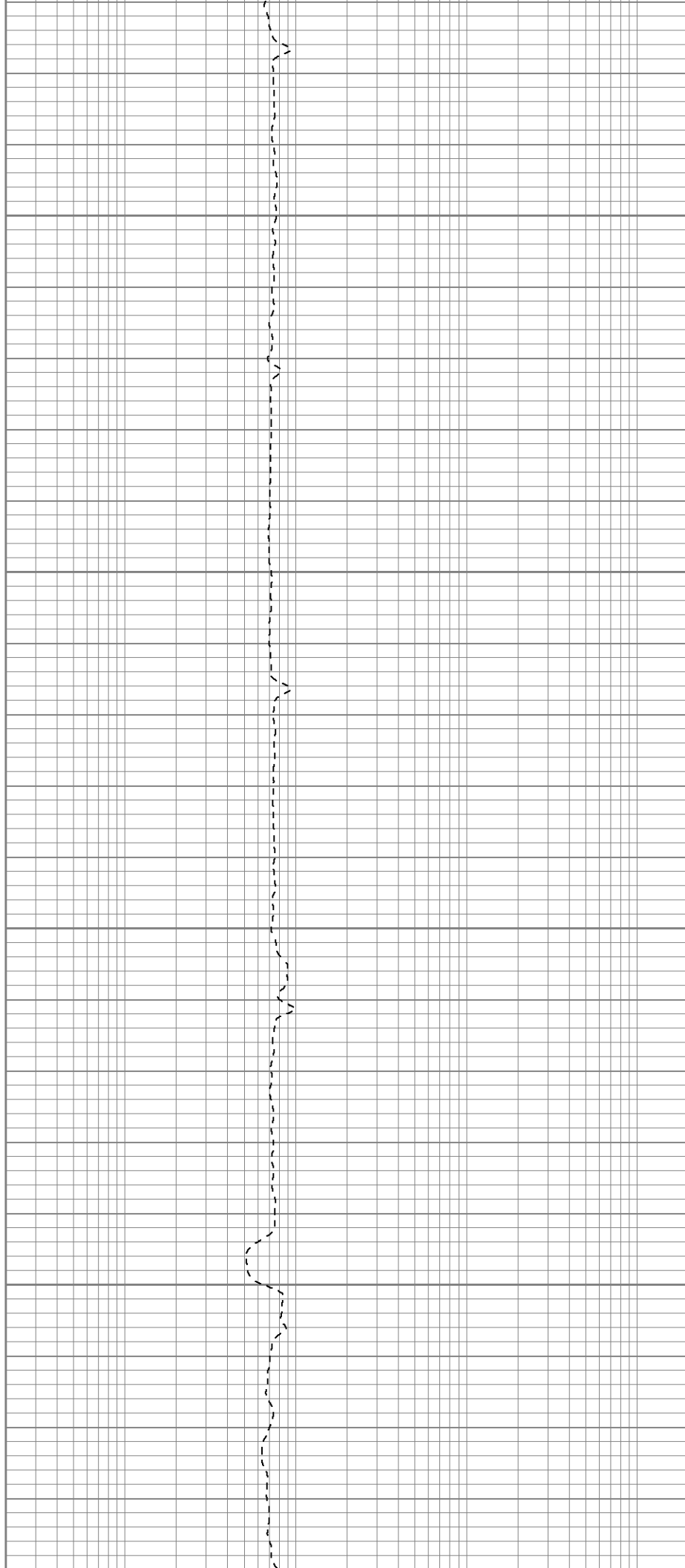


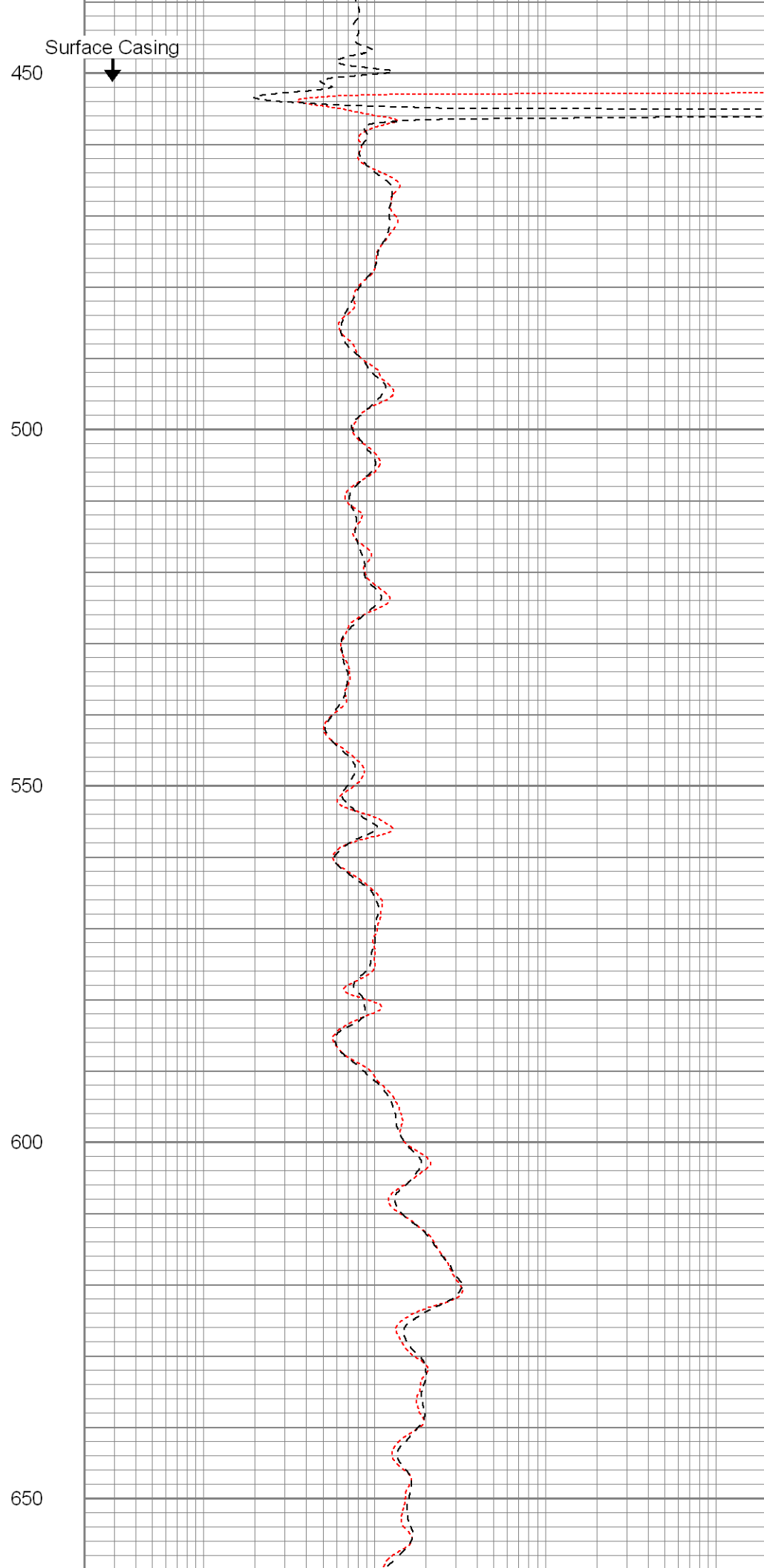
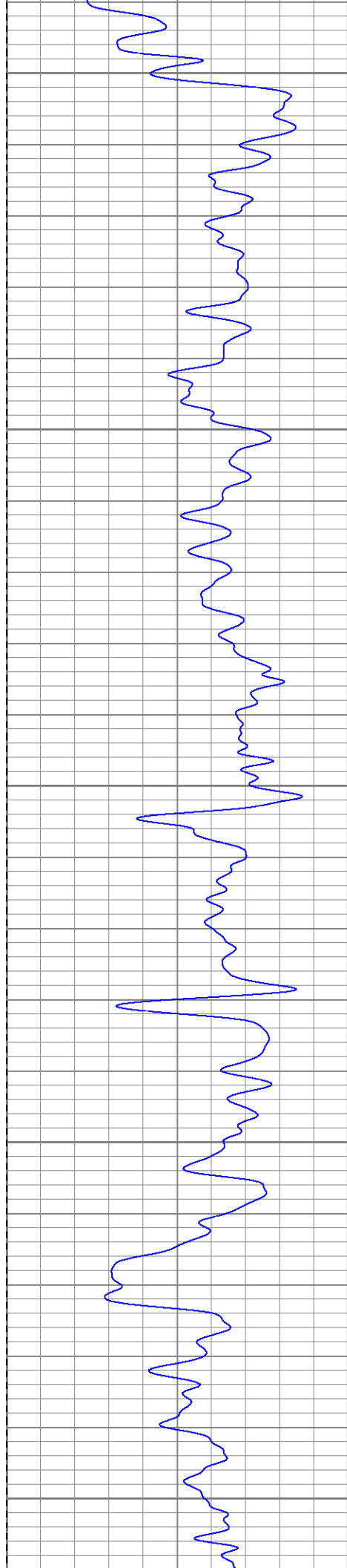
250

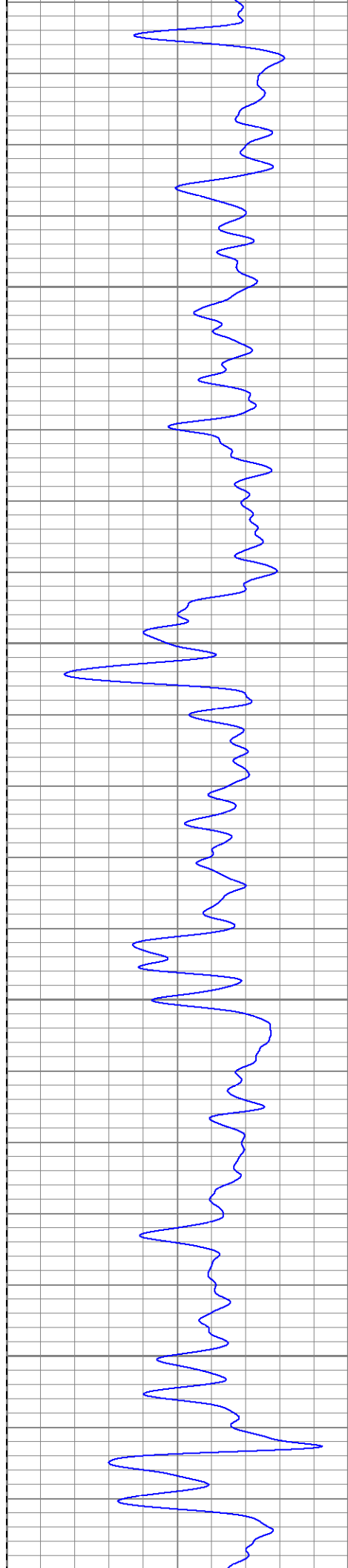
300

350

400





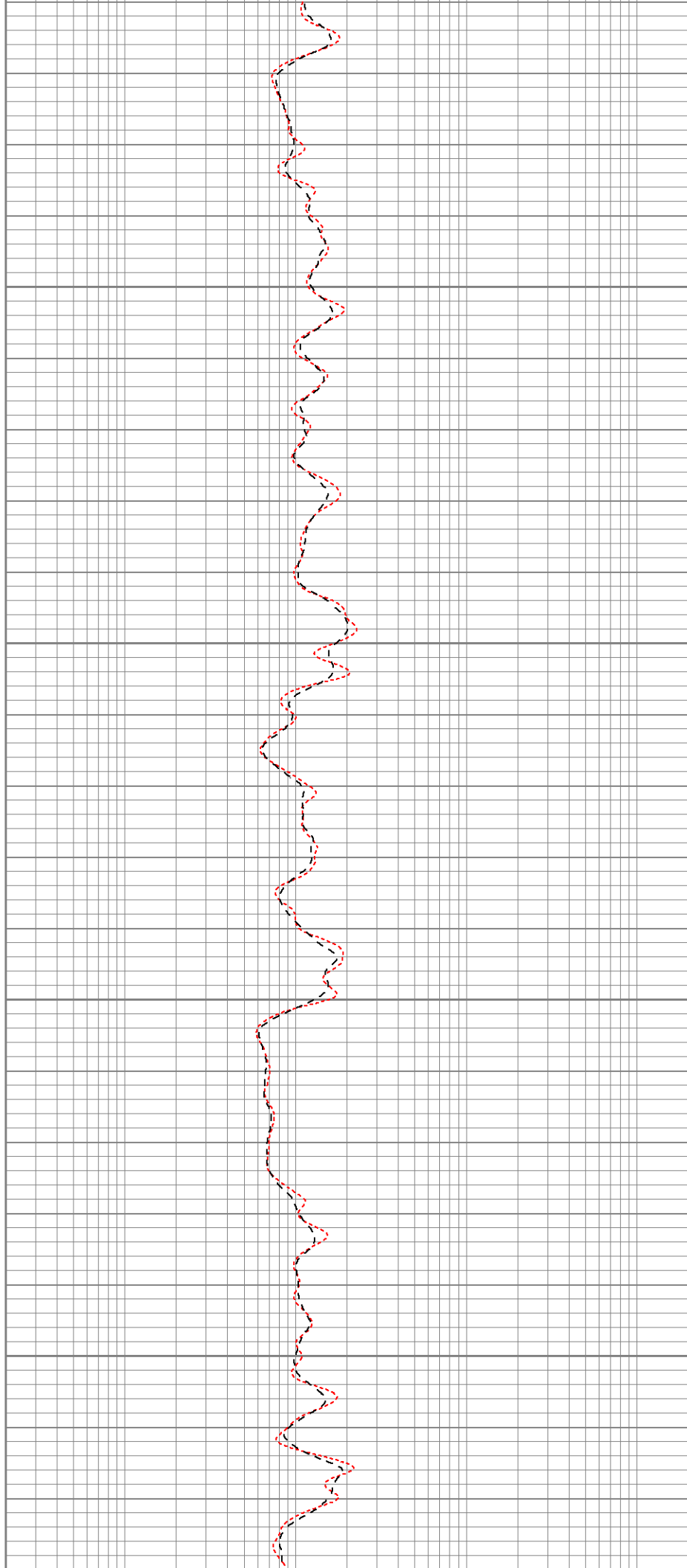


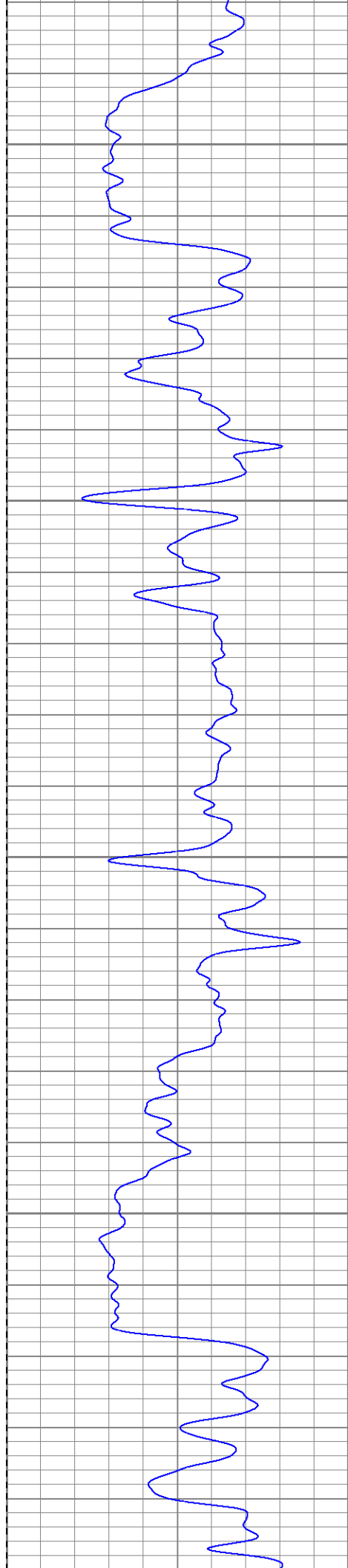
700

750

800

850





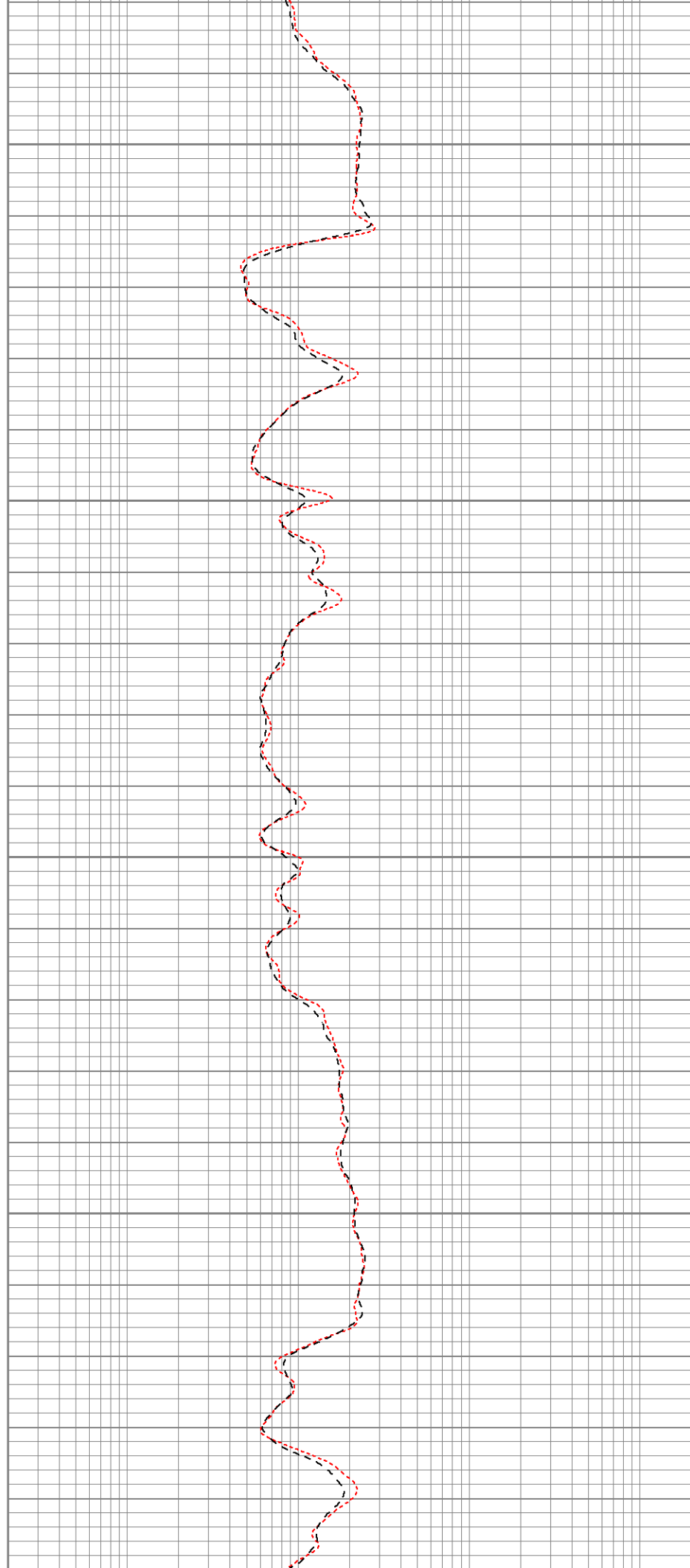
900

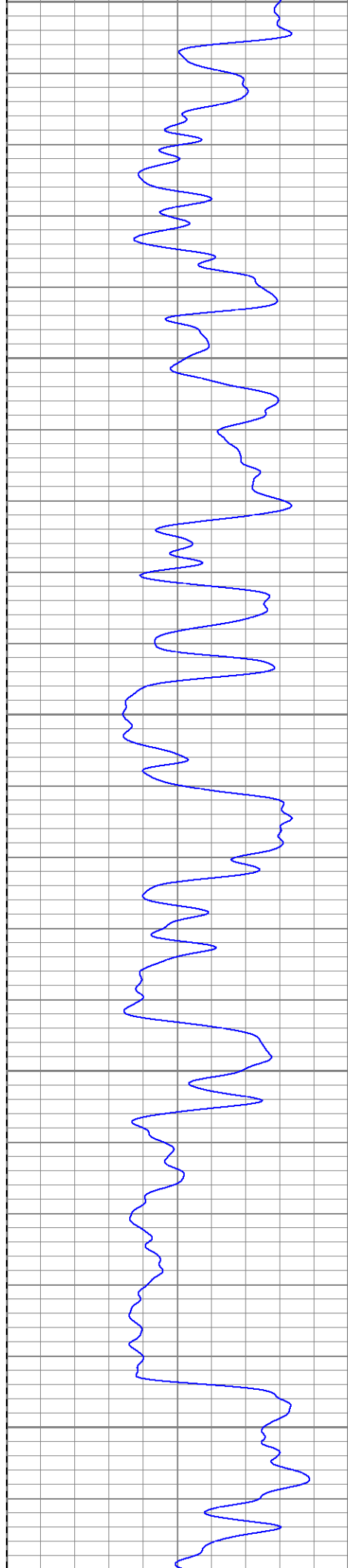
950

1000

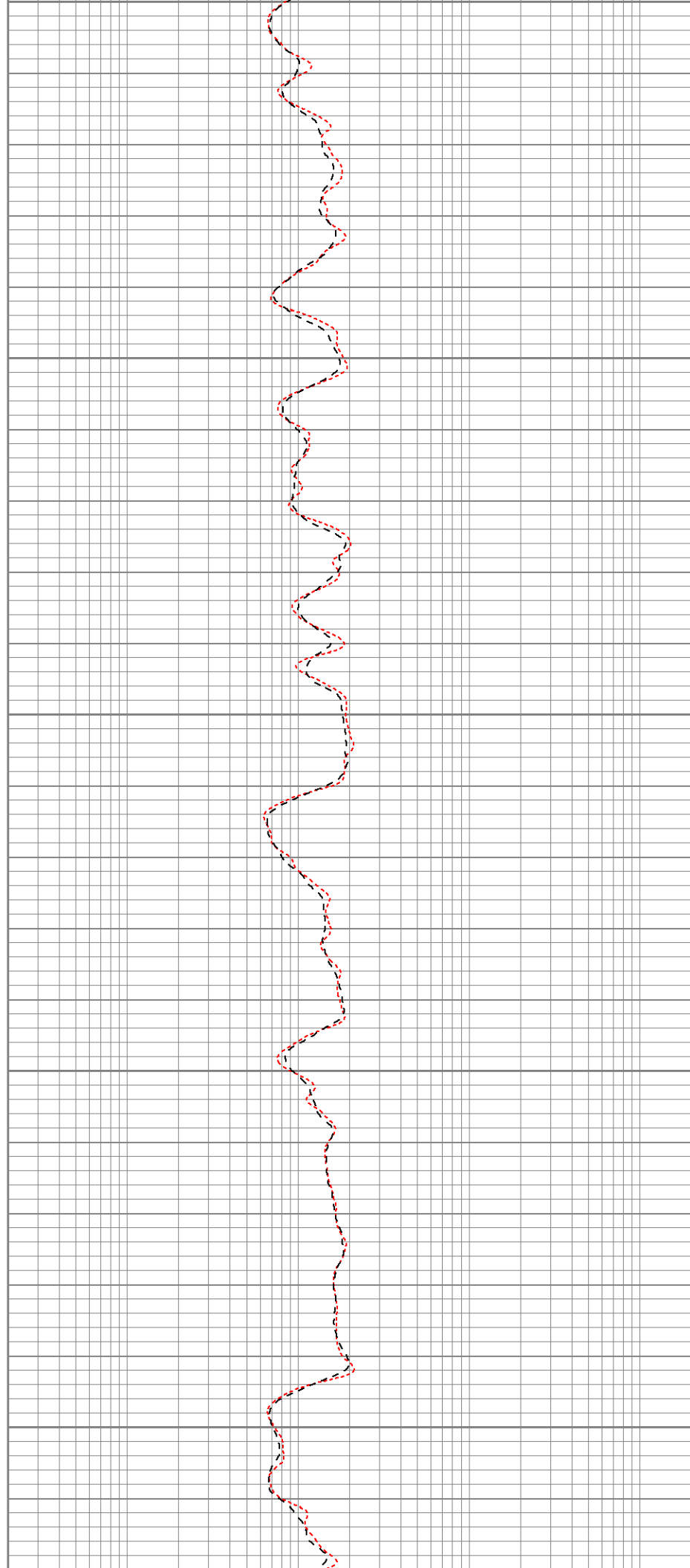
1050

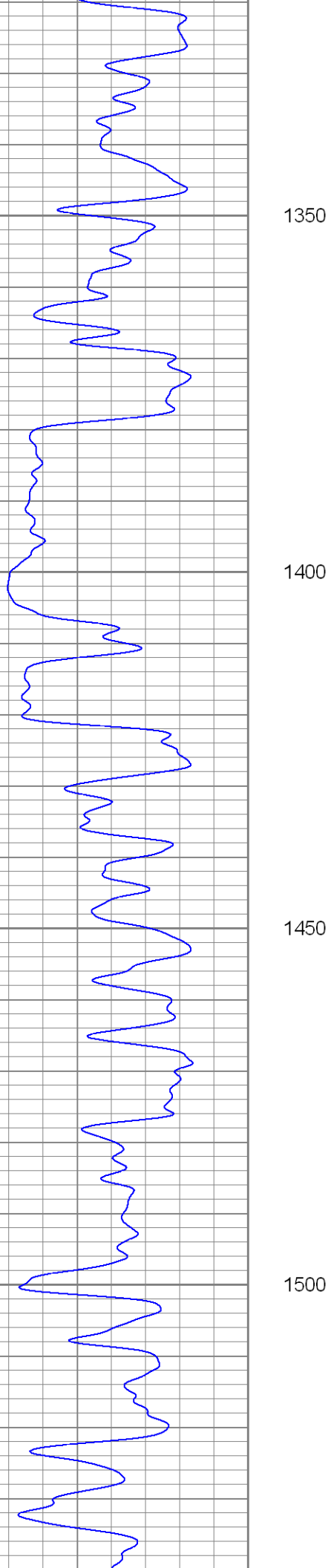
1100





1100
1150
1200
1250
1300





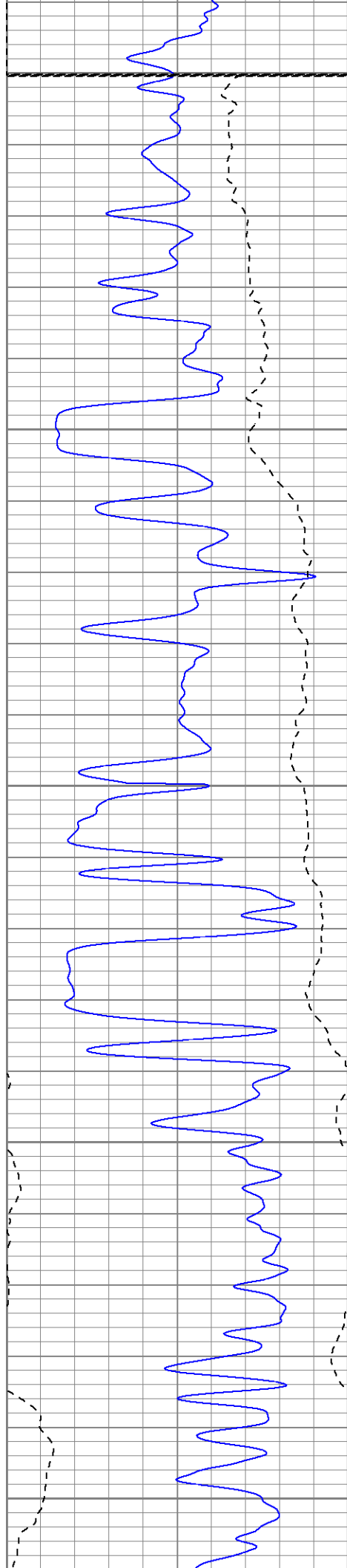
1350

1400

1450

1500





Fluid Level
↓

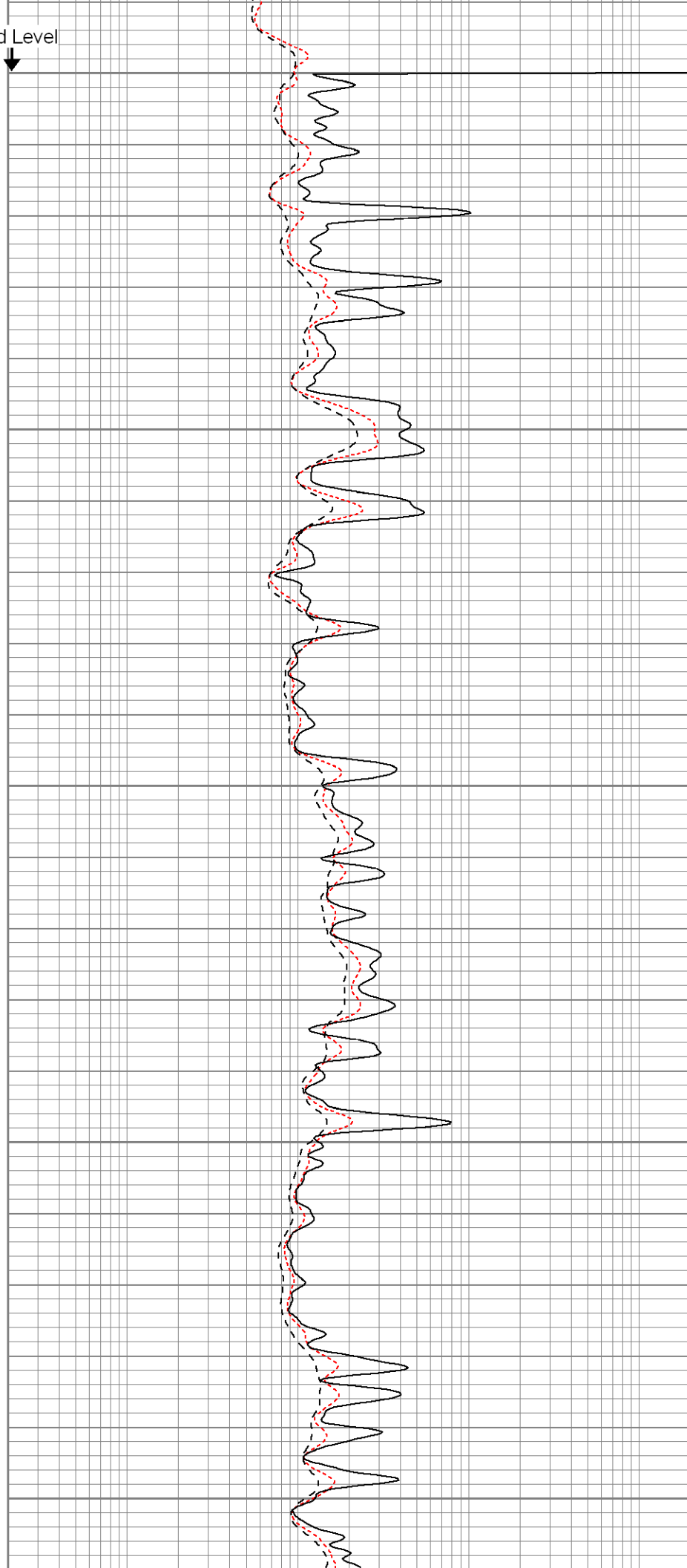
1550

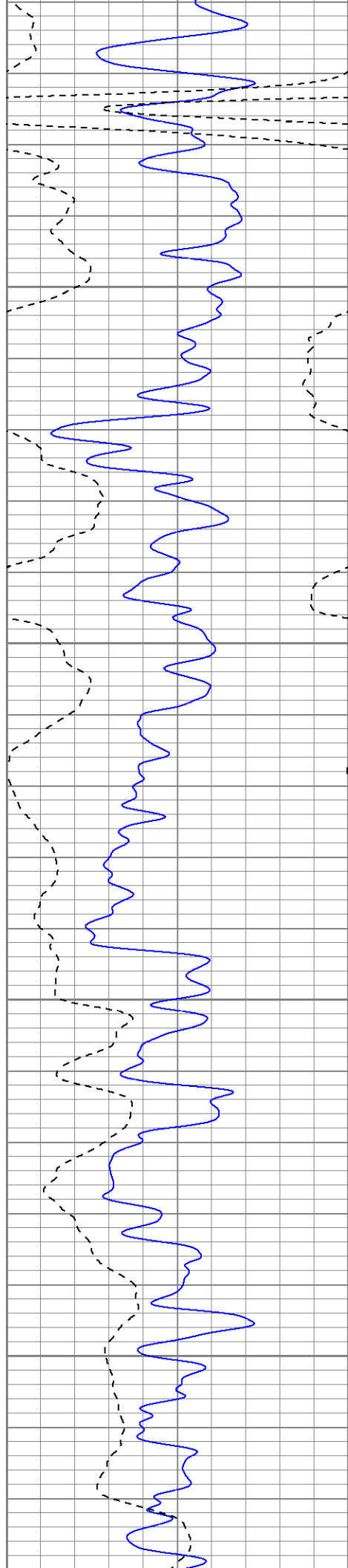
1600

1650

1700

1750



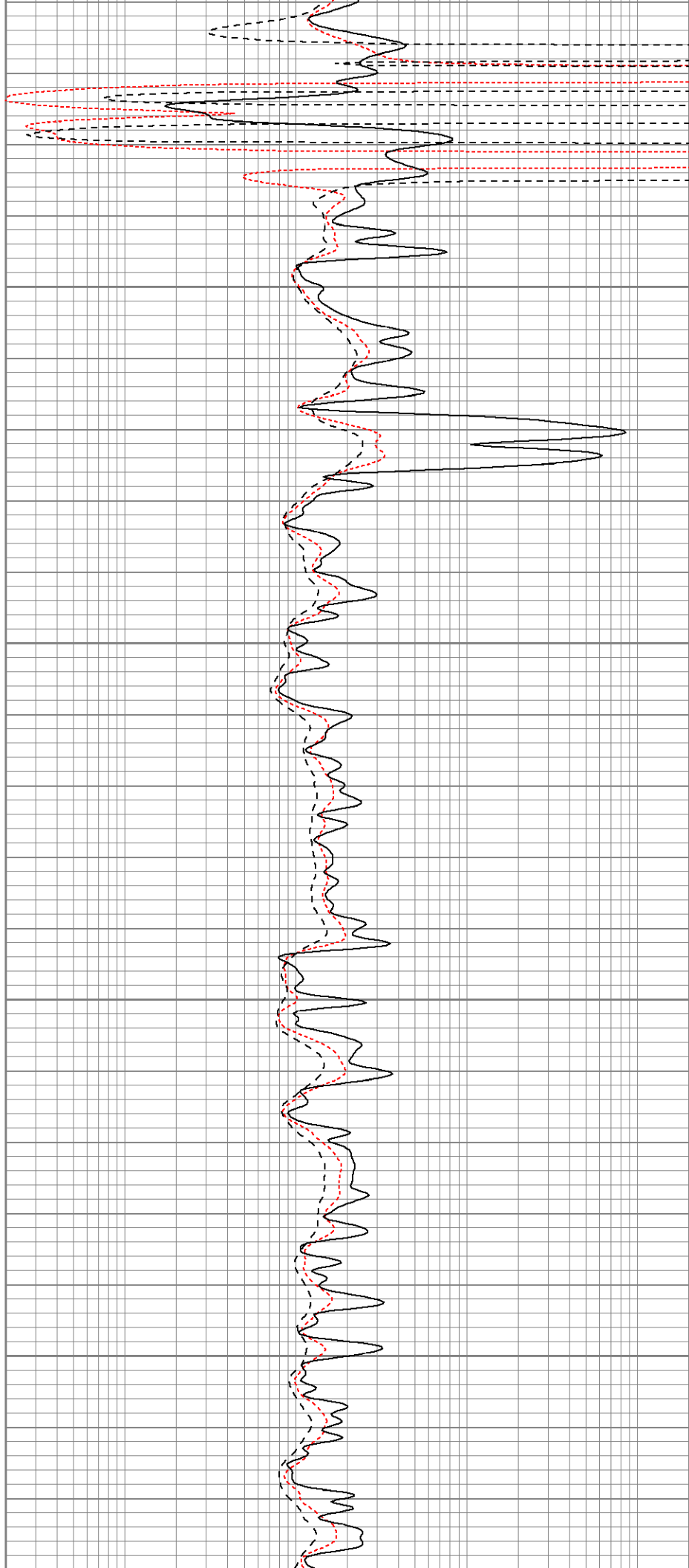


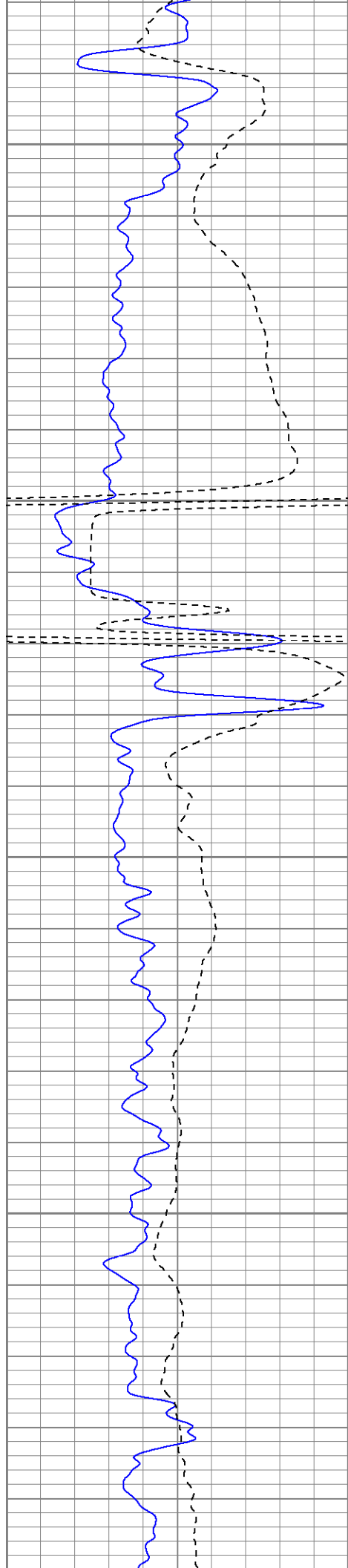
1800

1850

1900

1950





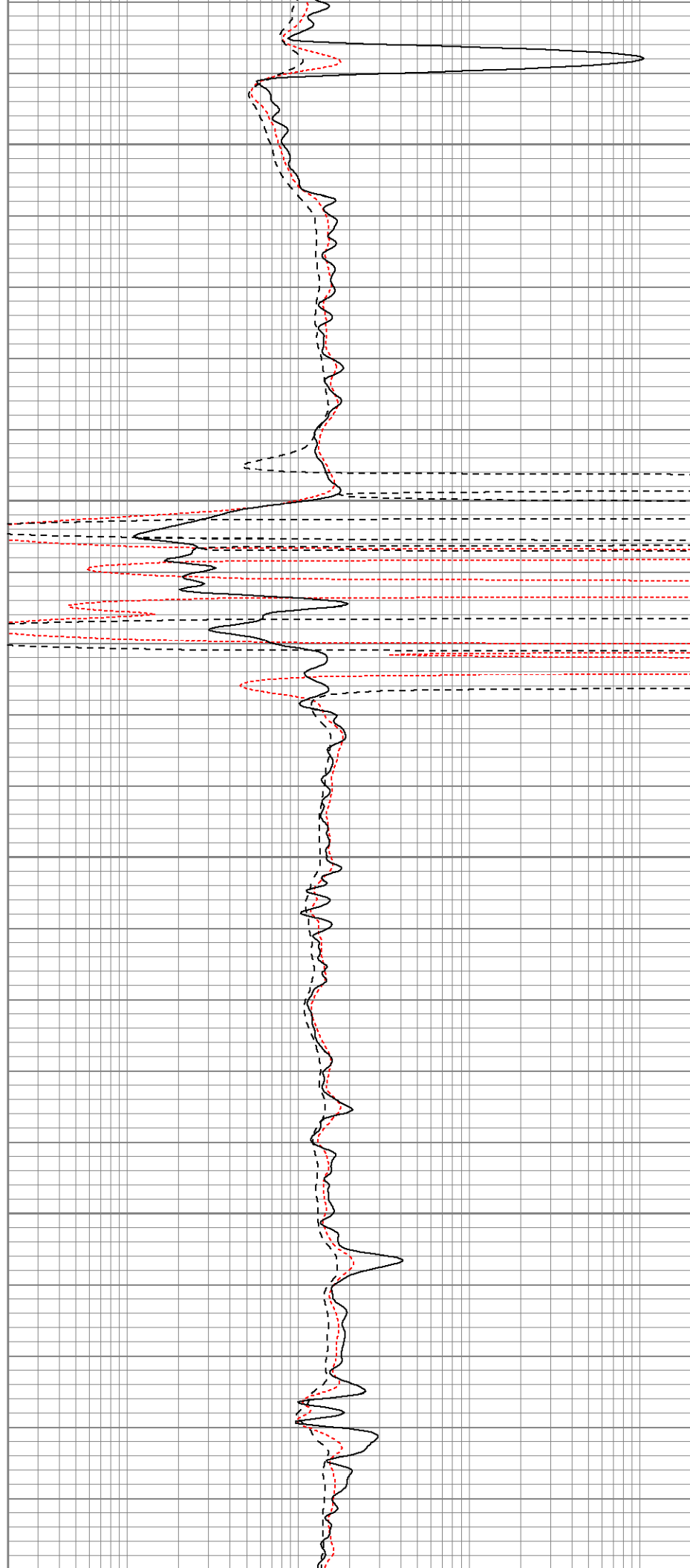
2000

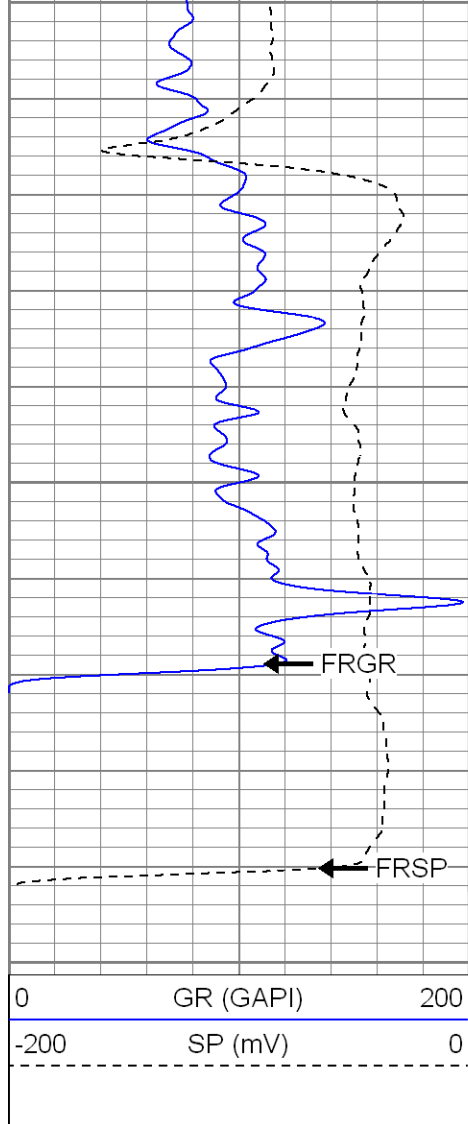
2050

2100

2150

2200

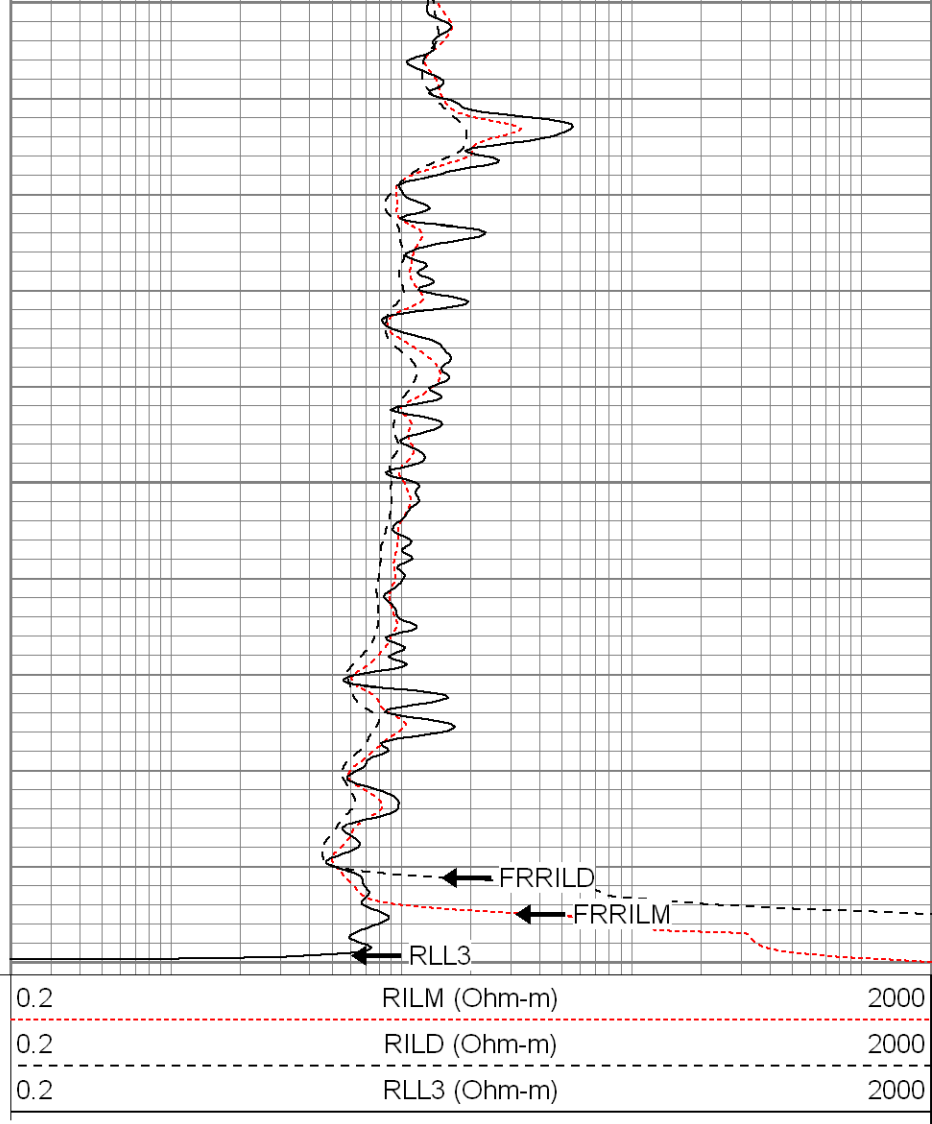




2200

2250

2300



SUPERIOR

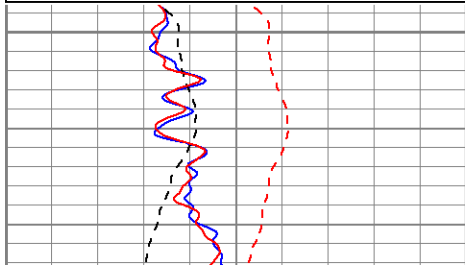
Black Lick, Pa.
Mercer, Pa.
Wooster, Oh.
Cleveland, Ok.
Trinidad, Co.

Repeat Pass

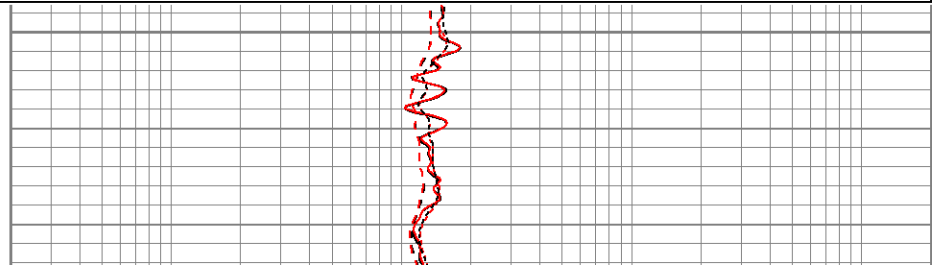
Database File: xtoge3315.db
Dataset Pathname: pass1.1
Presentation Format: dil
Dataset Creation: Wed Feb 27 15:09:10 2008 by Calc Open-Cased 070814
Charted by: Depth in Feet scaled 1:240

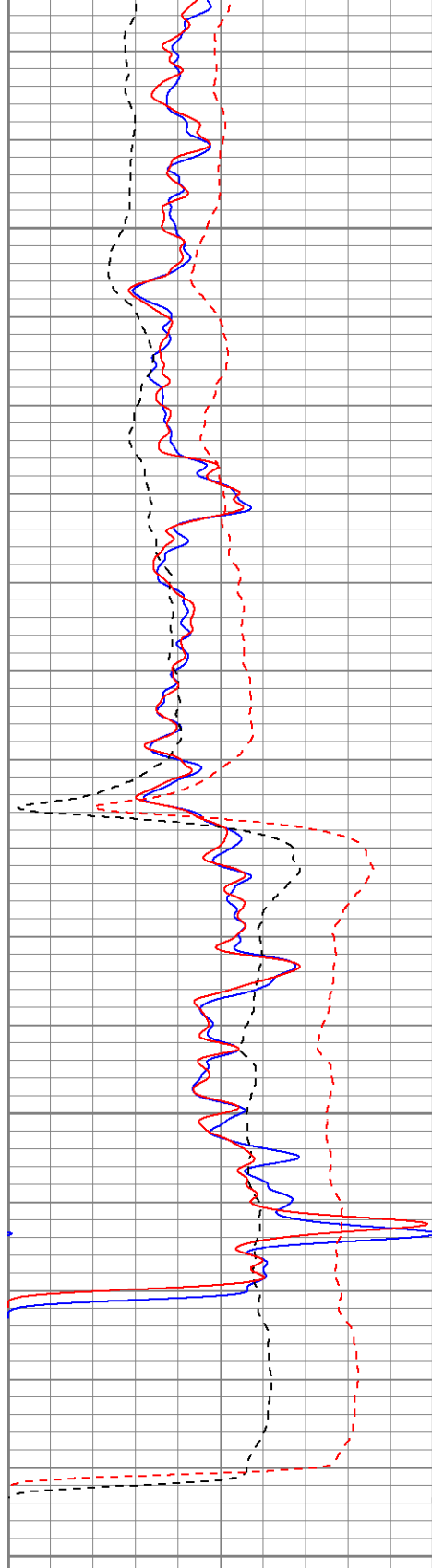
0	GR (GAPI)	200
-200	SP (mV)	0
0	GR-repeat (GAPI)	200
-200	SP-repeat (mV)	0

0.2	RILM (Ohm-m)	2000
0.2	RILD (Ohm-m)	2000
0.2	RLL3 (Ohm-m)	2000
0.2	RLL3-repeat (Ohm-m)	2000
0.2	RILM-repeat (Ohm-m)	2000
0.2	RILD-repeat (Ohm-m)	2000



2100





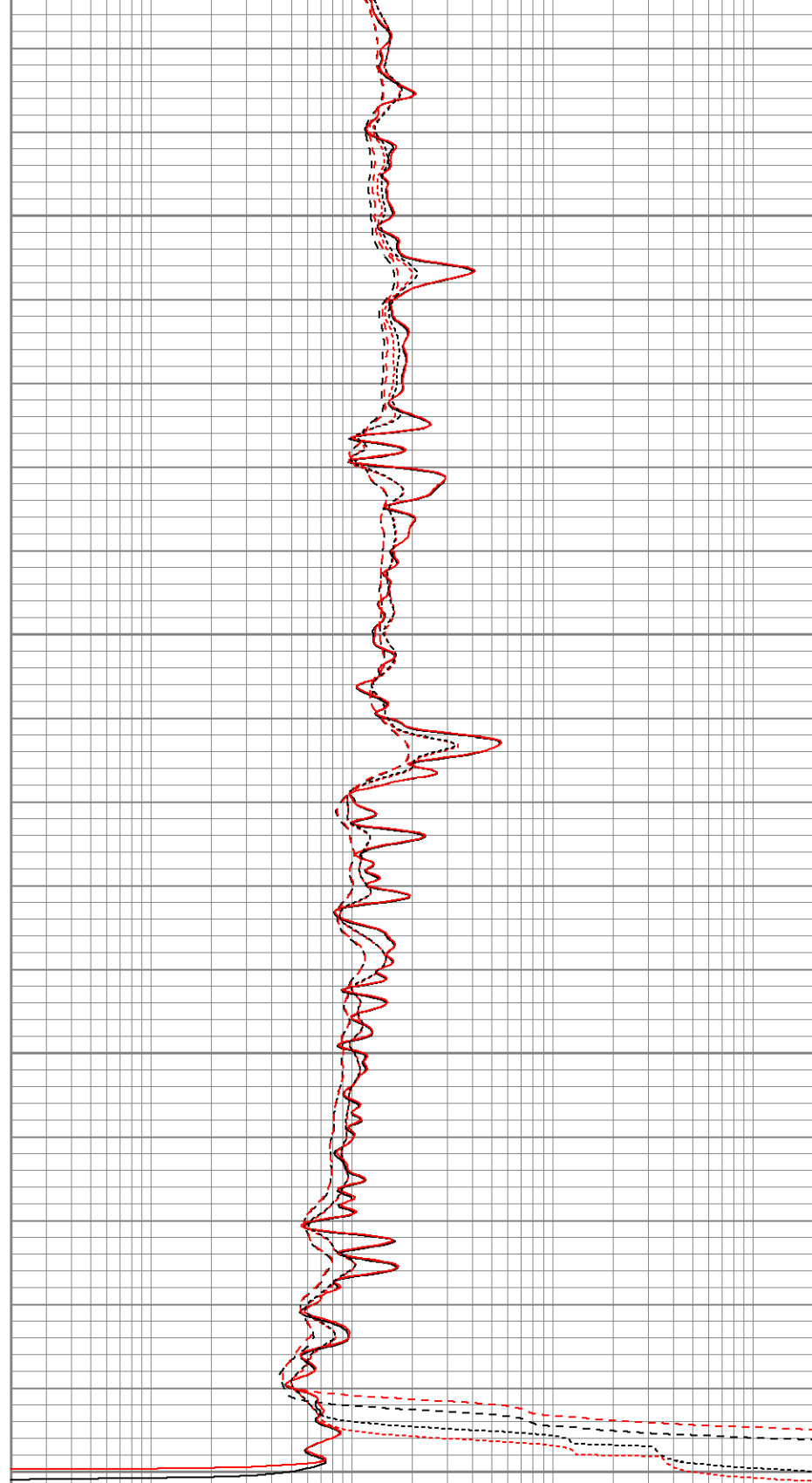
0	GR (GAPI)	200
-200	SP (mV)	0
0	GR-repeat (GAPI)	200
-200	SP-repeat (mV)	0

2150

2200

2250

2300



0.2	RILM (Ohm-m)	2000
0.2	RILD (Ohm-m)	2000
0.2	RLL3 (Ohm-m)	2000
0.2	RLL3-repeat (Ohm-m)	2000
0.2	RILM-repeat (Ohm-m)	2000
0.2	RILD-repeat (Ohm-m)	2000

Database File: xtoge3315.db
Dataset Pathname: pass1
Dataset Creation: Wed Feb 27 13:53:52 2008 by Log Open-Cased 070814

Dual Induction Calibration Report

Serial-Model: 5375-G
Surface Cal Performed: Wed Feb 06 09:29:54 2008
Downhole Cal Performed: Wed Feb 06 09:31:14 2008

Surface Calibration

	Readings			References			Results	
Loop:	Air	Loop		Air	Loop		m	b
Deep	0.002	0.622	V	0.000	500.000	mmho-m	806.307	-1.737
Medium	0.005	0.745	V	0.000	550.000	mmho-m	742.812	-3.450
Internal:	Zero	Cal		Zero	Cal		m	b
Deep	0.003	0.622	V	0.000	500.000	mmho-m	806.784	-2.176
Medium	0.005	0.745	V	0.000	550.000	mmho-m	743.382	-3.766

Downhole Calibration

	Readings			References			Results	
Internal:	Zero	Cal		Zero	Cal		m	b
Deep	0.241	500.512	mmho-m	0.438	500.143	mmho-m	0.999	0.197
Medium	0.213	550.041	mmho-m	0.313	549.891	mmho-m	1.000	0.100
Shallow	2.508	0.009	V	500.000	2.000	Ohm-m	125.000	-3.000

Compensated Density Calibration Report

Serial-Model: 2118-poilex
Source / Verifier: /
Master Calibration Performed: Tue Feb 19 13:14:22 2008

Master Calibration

	Density			Far Detector	Near Detector	
Magnesium	1.710	g/cc		689.13	662.28	cps
Aluminum	2.590	g/cc		156.84	466.09	cps
Spine Angle = 76.65				Density/Spine Ratio = 0.578		
	Size			Reading		
Small Ring	8.50	in		4.33	V	
Large Ring	14.00	in		8.24	V	

Gamma Ray Calibration Report

Serial Number: 2000
Tool Model: P2000
Performed: Mon Feb 18 07:40:11 2008

Calibrator Value: 1.0 GAPI

Background Reading: 0.0 cps
Calibrator Reading: 1.0 cps

Sensitivity: 0.2700 GAPI/cps

Neutron Calibration Report

Serial Number:	5145	
Tool Model:	G	
Performed:	Wed Feb 06 10:21:29 2008	
Calibrator Value:	1200	NAPI
Calibrator Reading:	1700	cps
Sensitivity:	1	NAPI/cps

[illegible]