



SUPERIOR
Black Lick, Pa.
Mercer, Pa.
Wooster, Oh.
Cleveland, Ok.
Trinidad, Co.

DUAL INDUCTION LOG

Company XTO Energy Inc.
Well New Elk 36-05
Field Purgatoire River
County Las Animas State Colorado

Location: API # : 05 071 09236 00

2345' FNL & 822' FWL

SEC 36 TWP 33S RGE 68W

Permanent Datum Ground Level Elevation 8199'
Log Measured From Ground Level
Drilling Measured From Ground Level

Other Services
cdl
neu
Elevation
K.B. -----
D.F. -----
G.L. 8199'

Date 2-15-08

Run Number One

Depth Driller 2415'

Depth Logger 2410'

Bottom Logged Interval 2408'

Top Log Interval Surface Casing

Casing Driller 8 5/8" @ 465'

Casing Logger 450'

Bit Size 7 7/8"

Type Fluid in Hole Water

Density / Viscosity ///

pH / Fluid Loss ///

Source of Sample ///

Rm @ Meas. Temp ///

Rmf @ Meas. Temp ///

Rmc @ Meas. Temp ///

Source of Rmf / Rmc ///

Rm @ BHT ///

Time Circulation Stopped 2:30 A.M.

Time Logger on Bottom 7:45 A.M.

Maximum Recorded Temperature 108 DEGF

Equipment Number T0701

Location Trinidad

Recorded By C. Sistreros

Witnessed By Mr. Don Johnson

>>> Fold Here >>>

All interpretations are opinions based on inferences from electrical or other measurements and we cannot and do not guarantee the accuracy or correctness of any interpretation, and we shall not, except in the case of gross or willful negligence on our part, be liable or responsible for any loss, costs, damages, or expenses incurred or sustained by anyone resulting from any interpretation made by any of our officers, agents or employees. These interpretations are also subject to our general terms and conditions set out in our current Price Schedule.

Comments

Well Directions:
Second Bosque entrance, across tracks, stay left at Y,
to Cuerela Canyon, thru green gate, take first right,
location is the Seventh drive thru location.



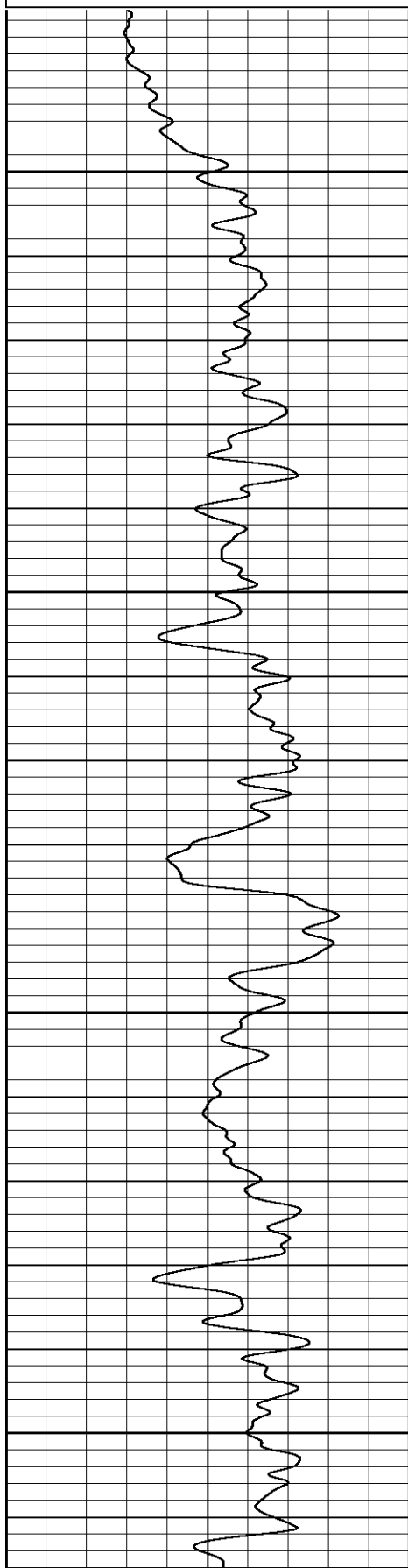
SUPERIOR
Black Lick, Pa.
Mercer, Pa.
Wooster, Oh.
Cleveland, Ok.
Trinidad, Co.

Main Pass

Database File: xtone3605.db
Dataset Pathname: pass2.1
Presentation Format: dil
Dataset Creation: Fri Feb 15 09:37:32 2008 by Calc Open-Cased 070814
Charted by: Depth in Feet scaled 1:240

0	GR (GAPI)	200
-200	SP (mV)	0

0.2	RILD (Ohm-m)	2000
0.2	RILM (Ohm-m)	2000
0.2	RLL3 (Ohm-m)	2000

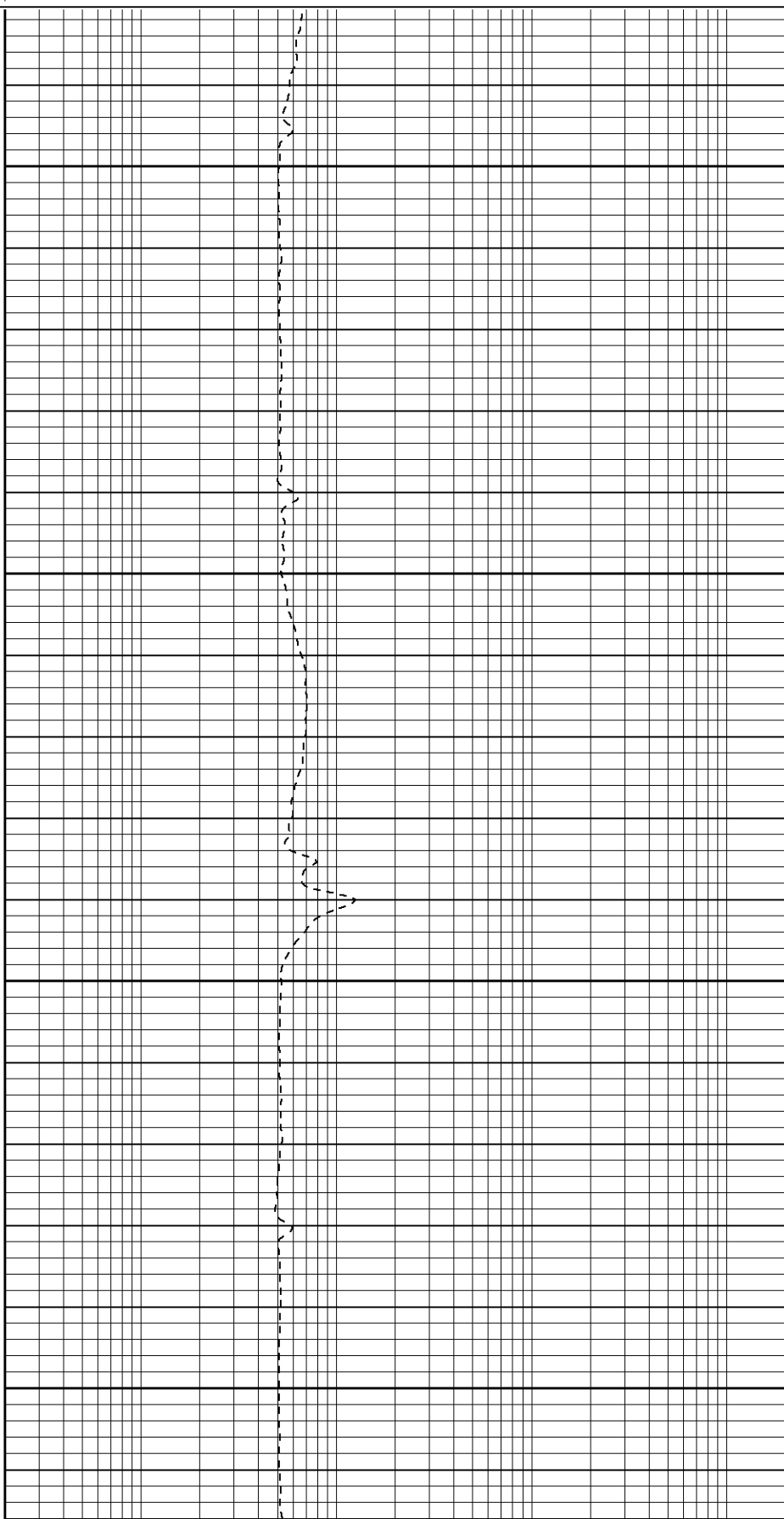


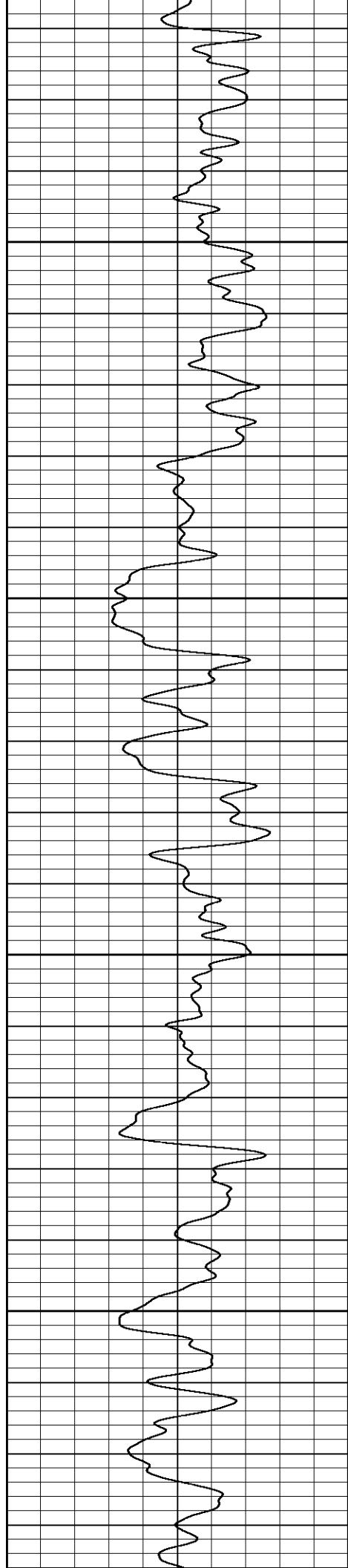
50

100

150

200



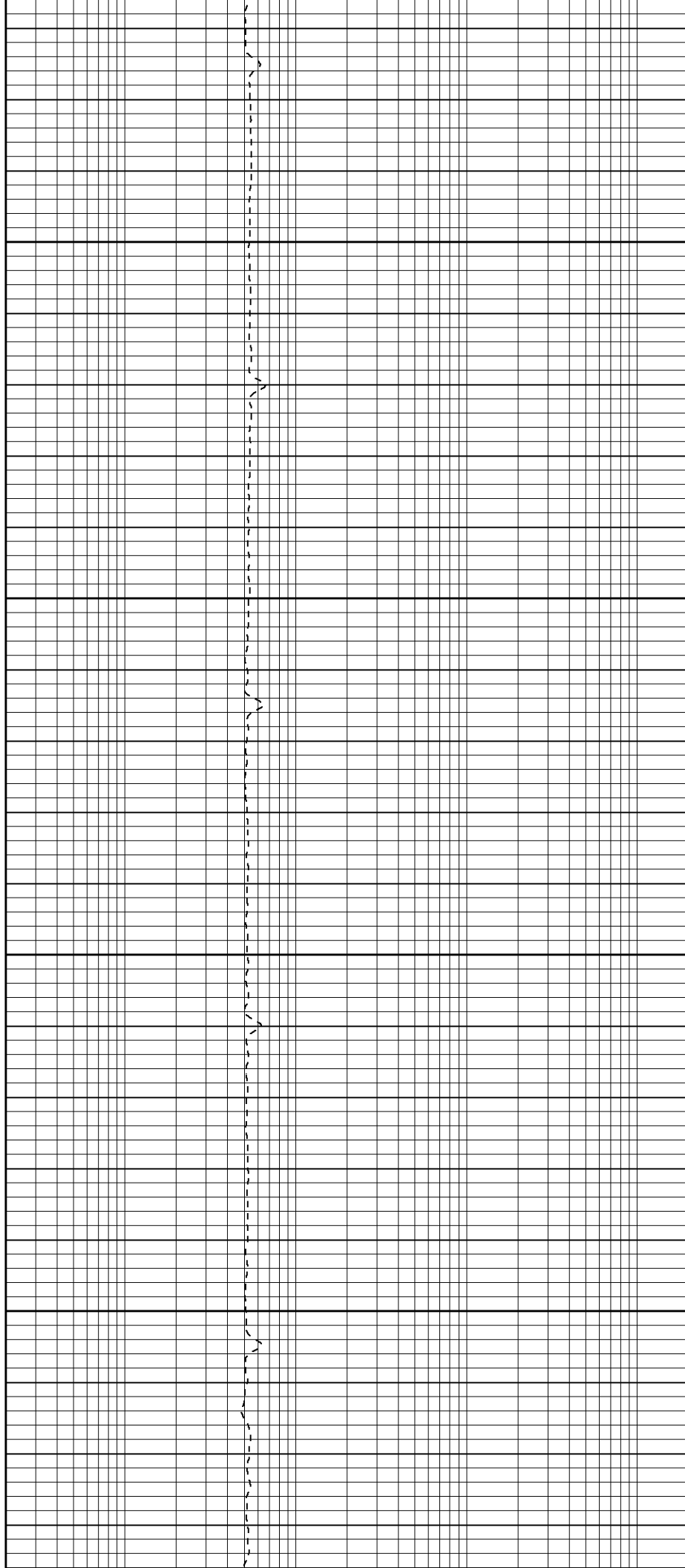


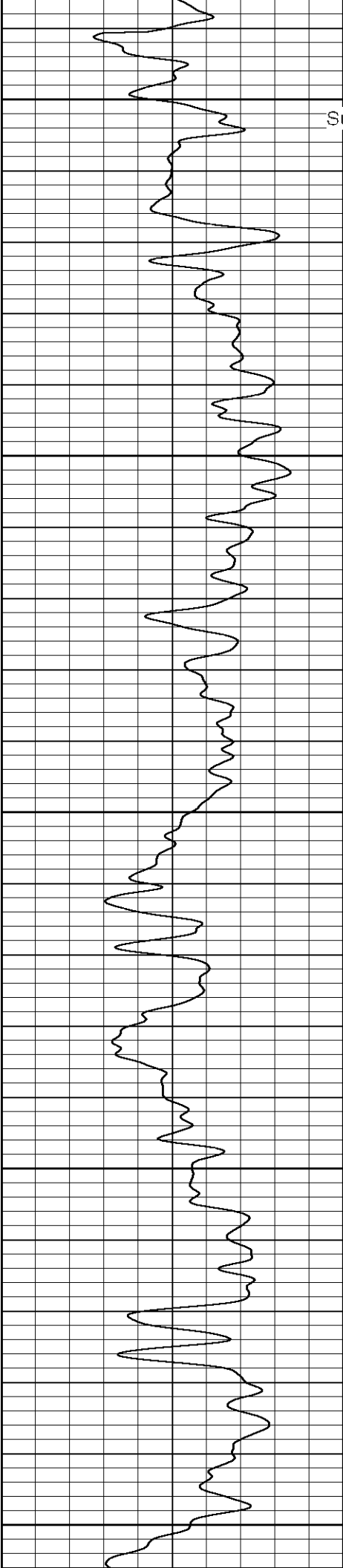
250

300

350

400





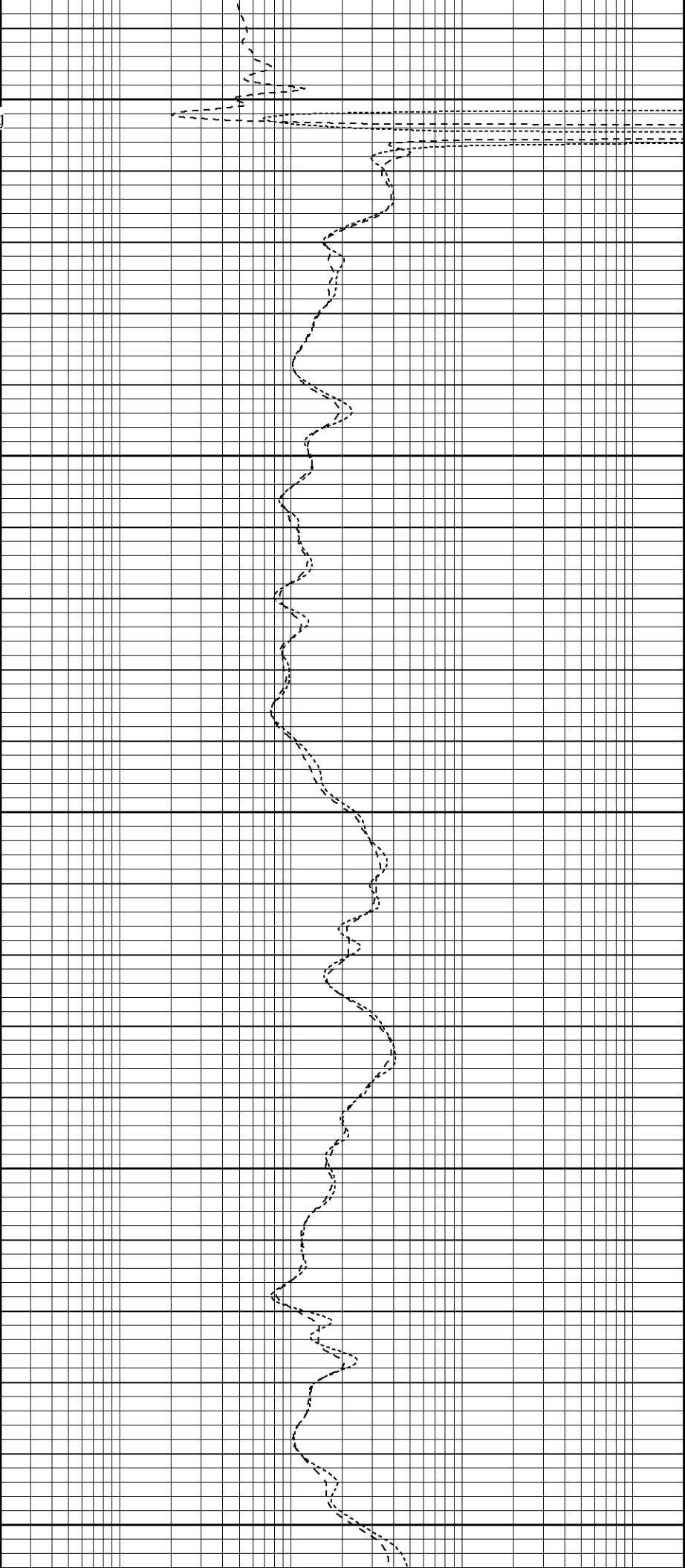
450
Surface Casing

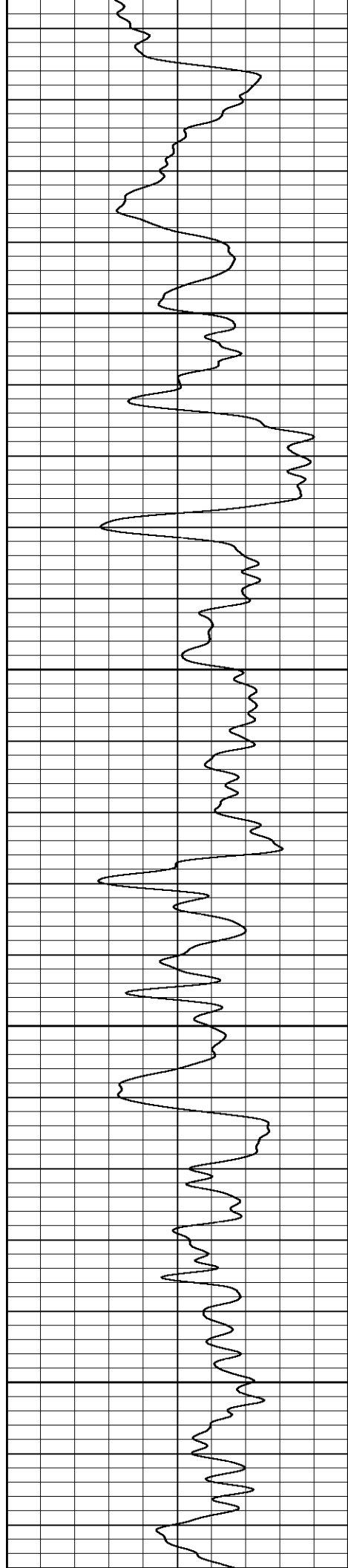
500

550

600

650



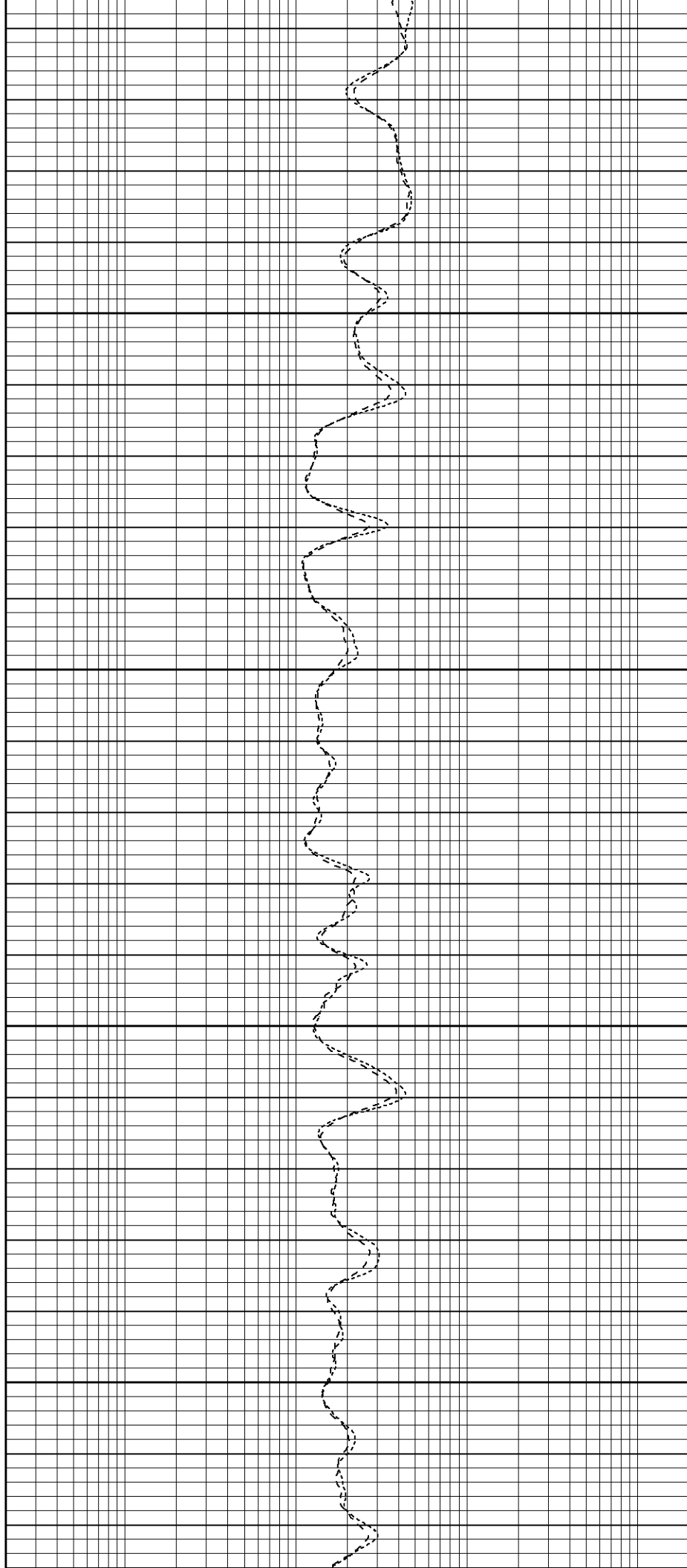


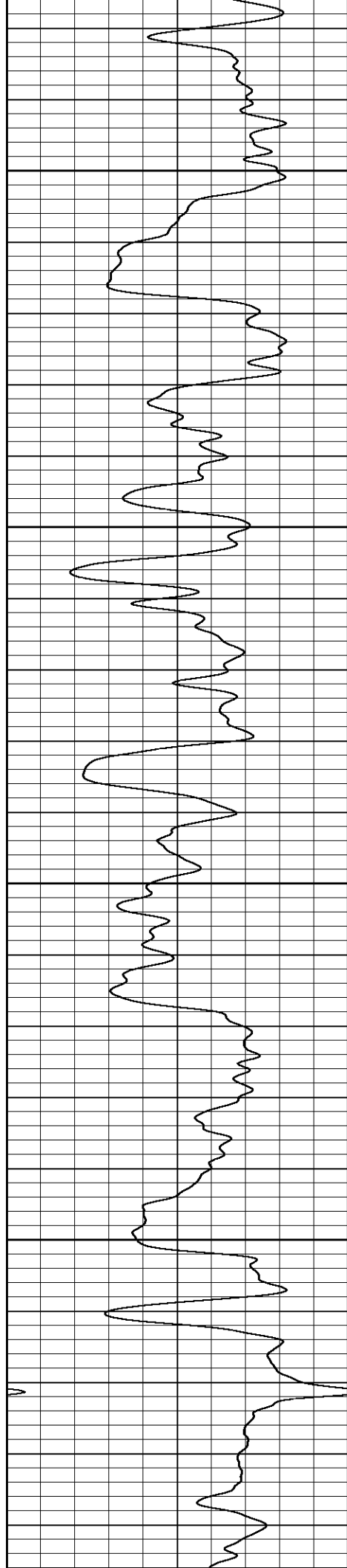
700

750

800

850



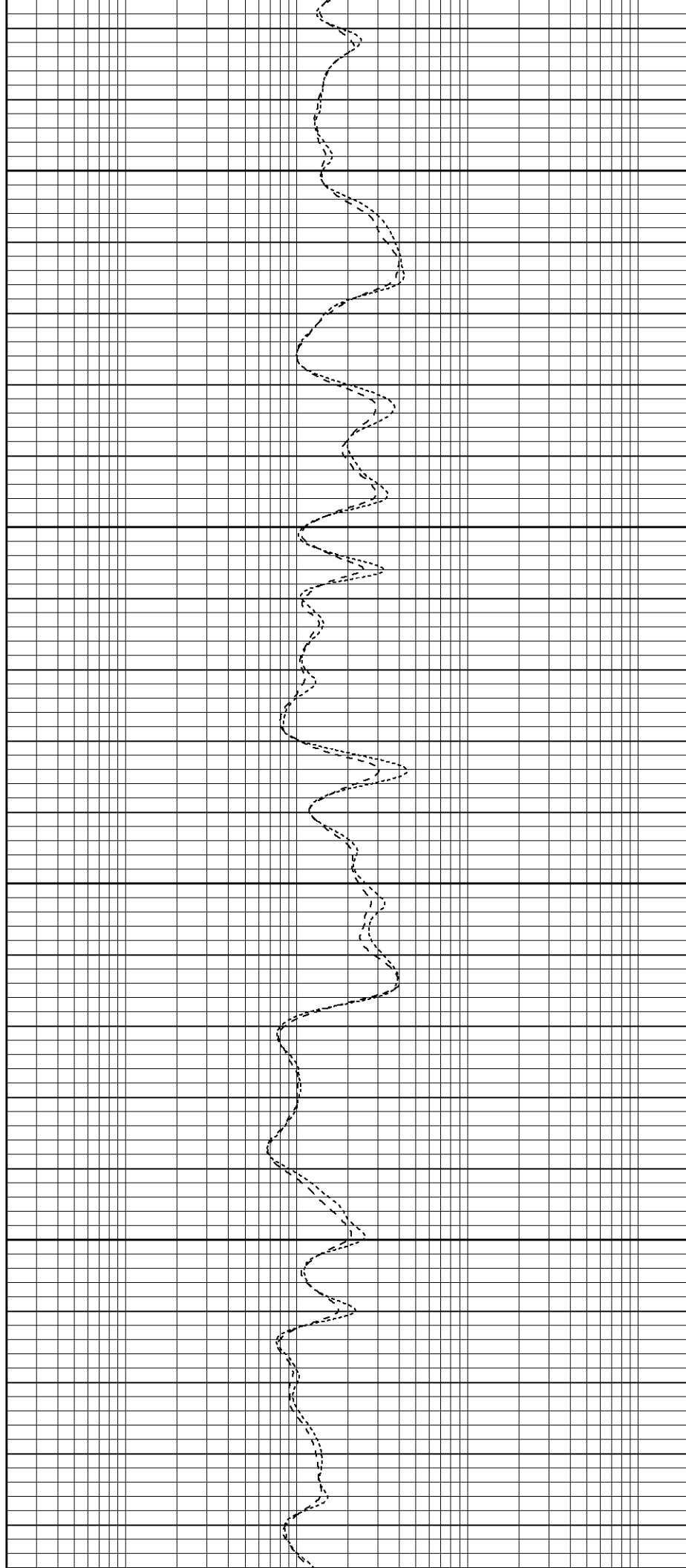


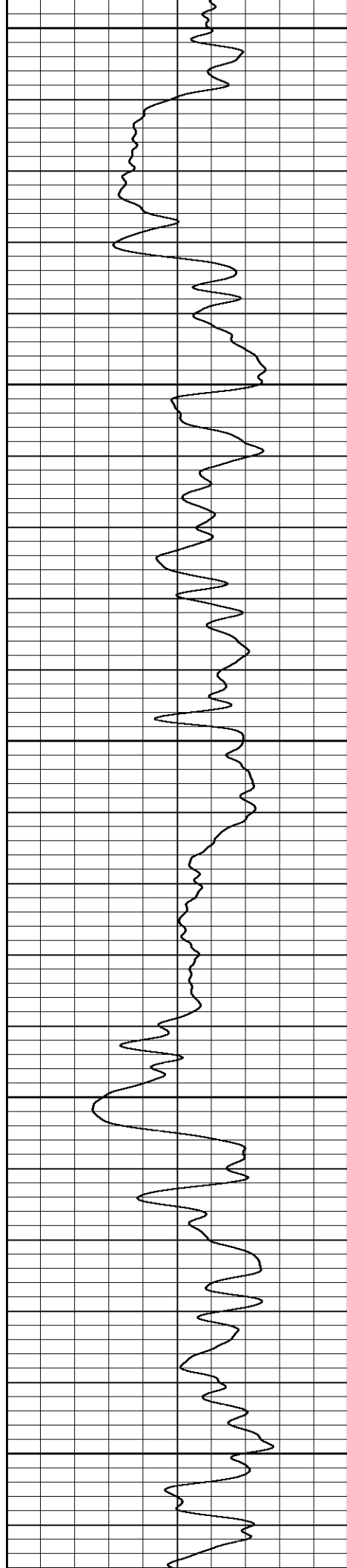
900

950

1000

1050





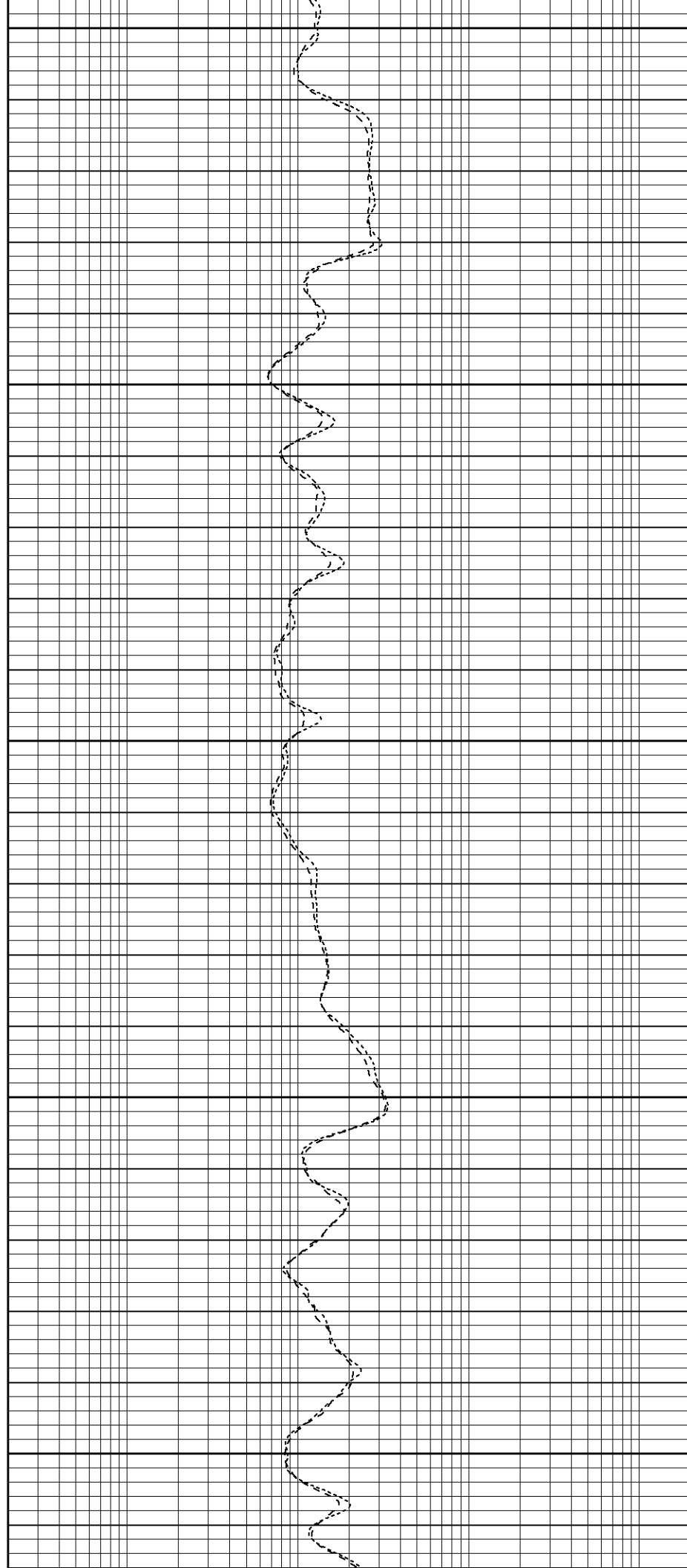
1100

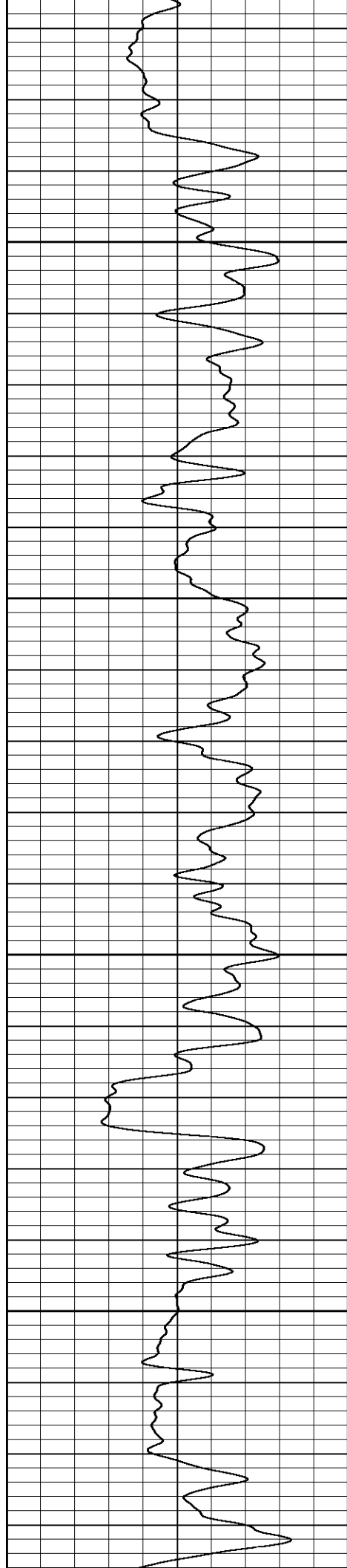
1150

1200

1250

1300



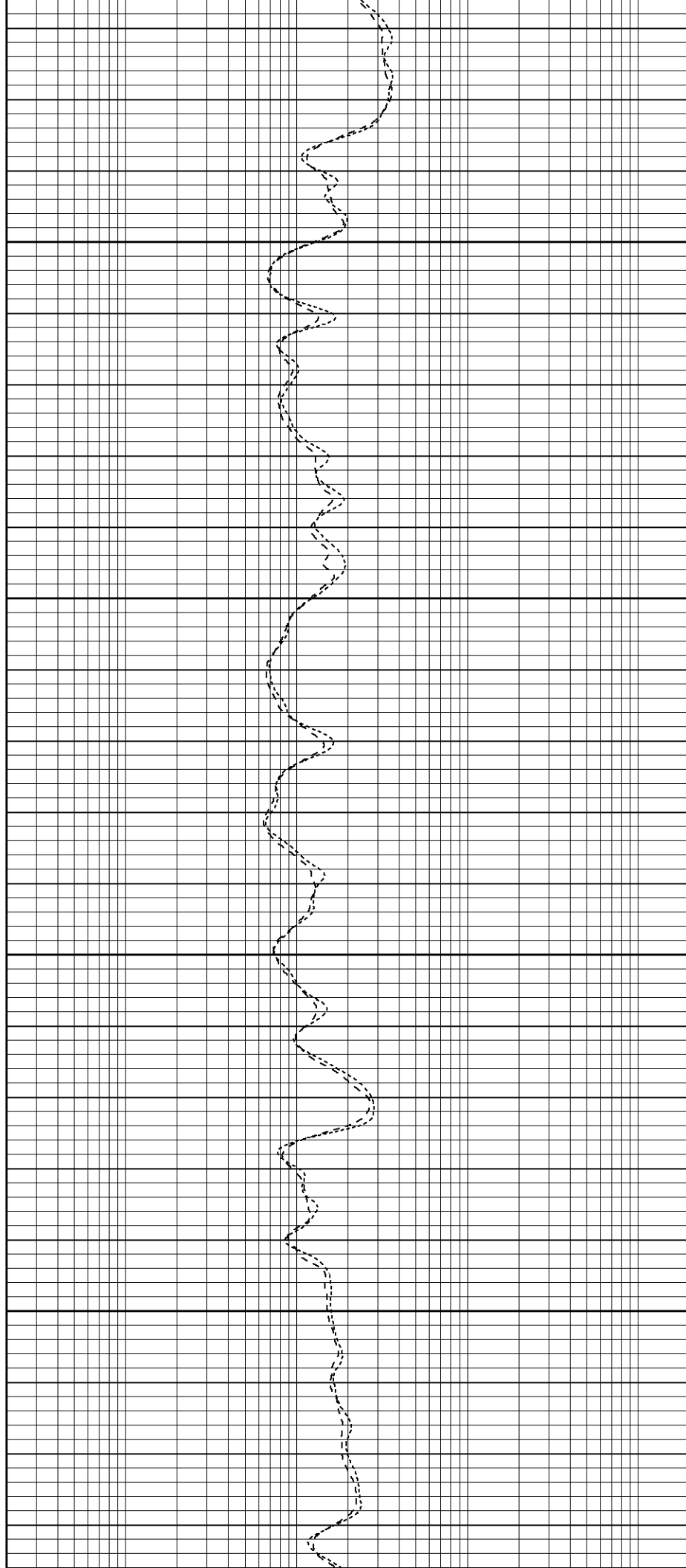


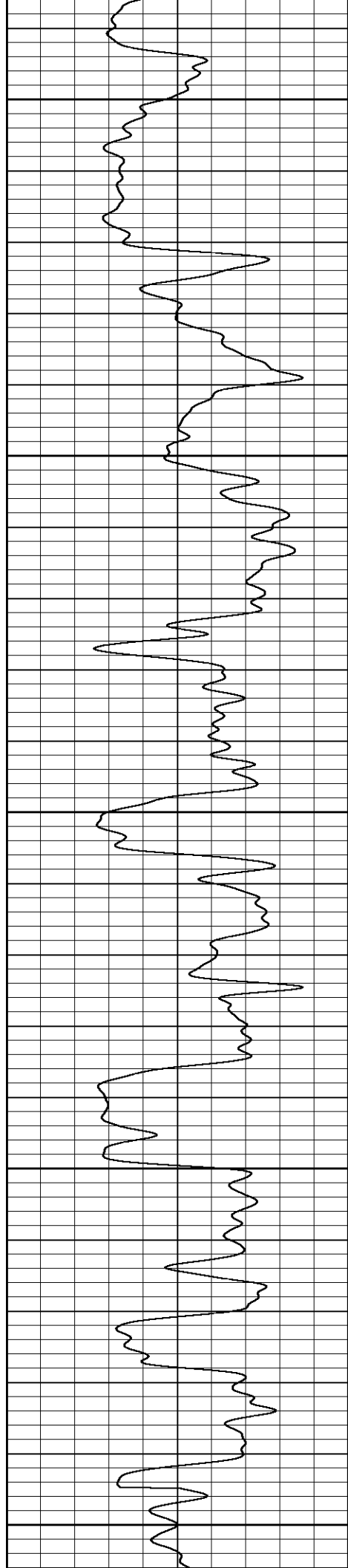
1350

1400

1450

1500





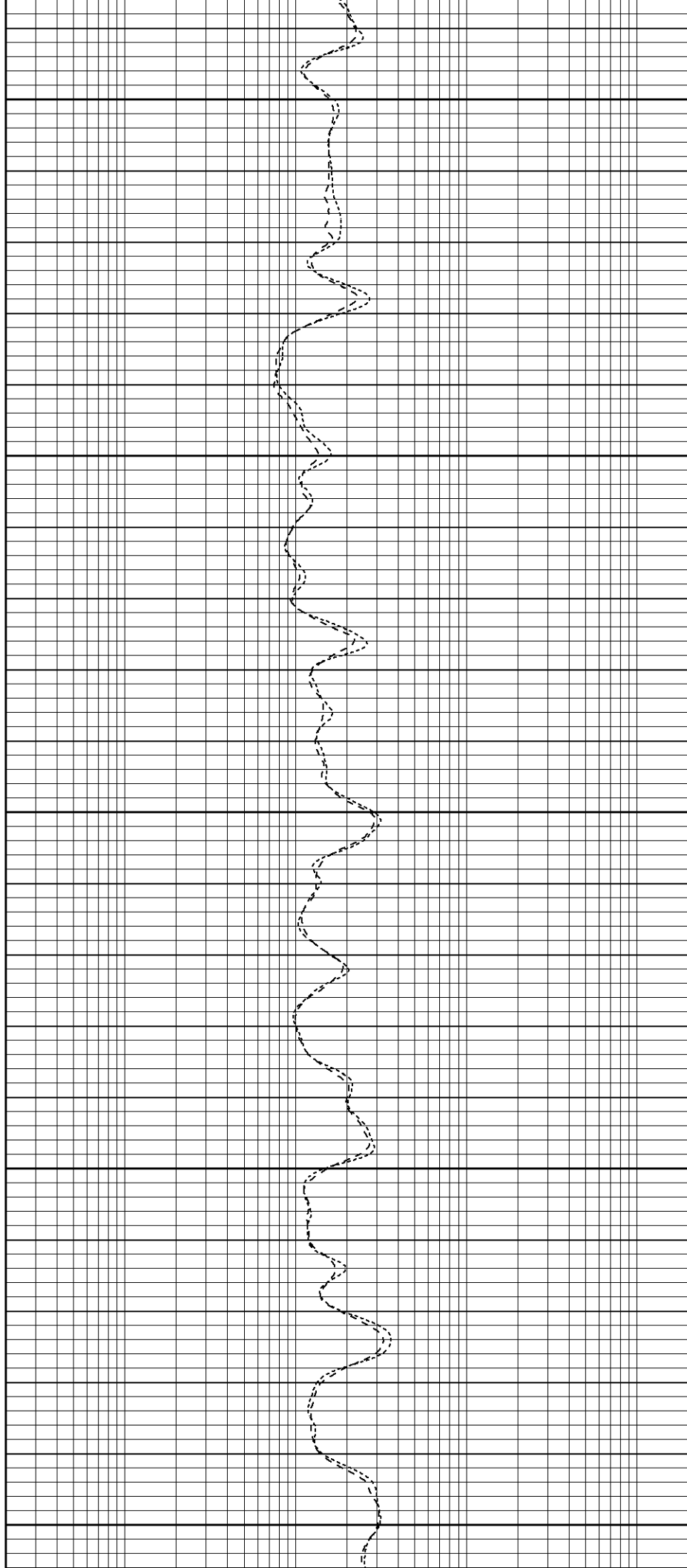
1550

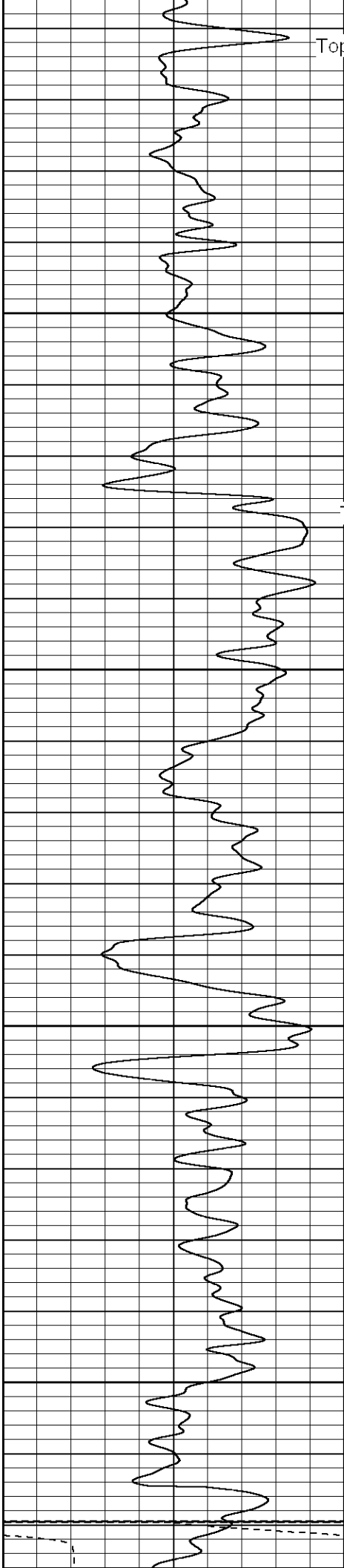
1600

1650

1700

1750





Top Of Raton Congl.

1800

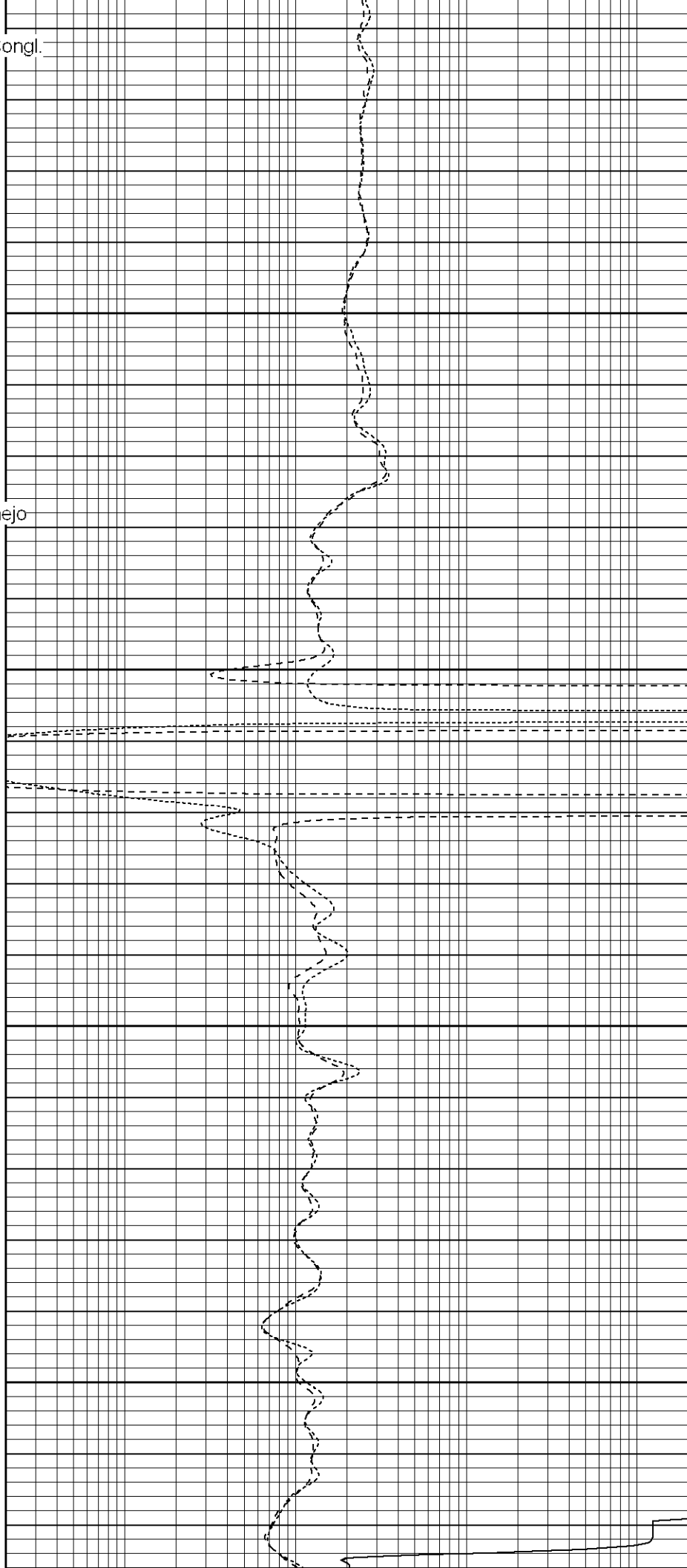
Top Of Vermejo

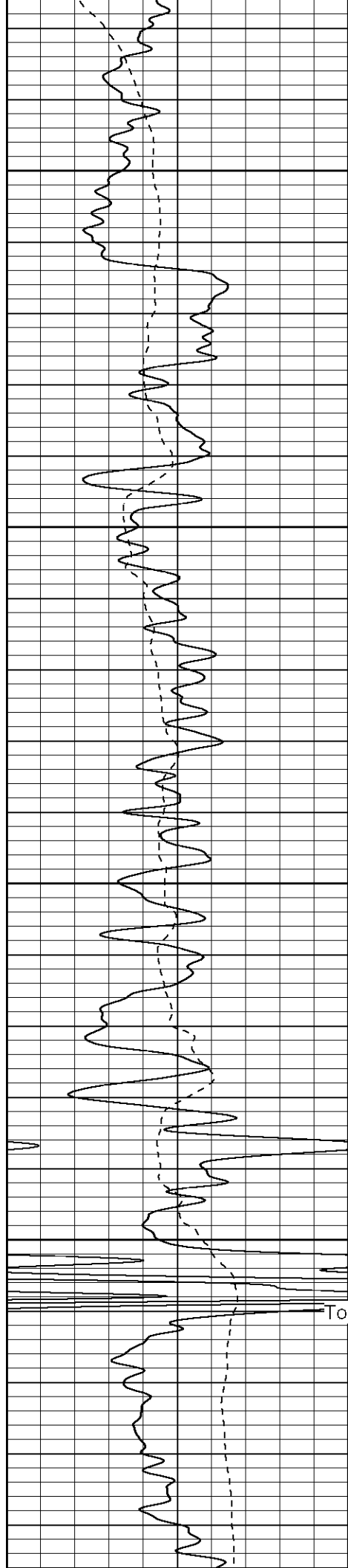
1850

1900

1950

Fluid Level





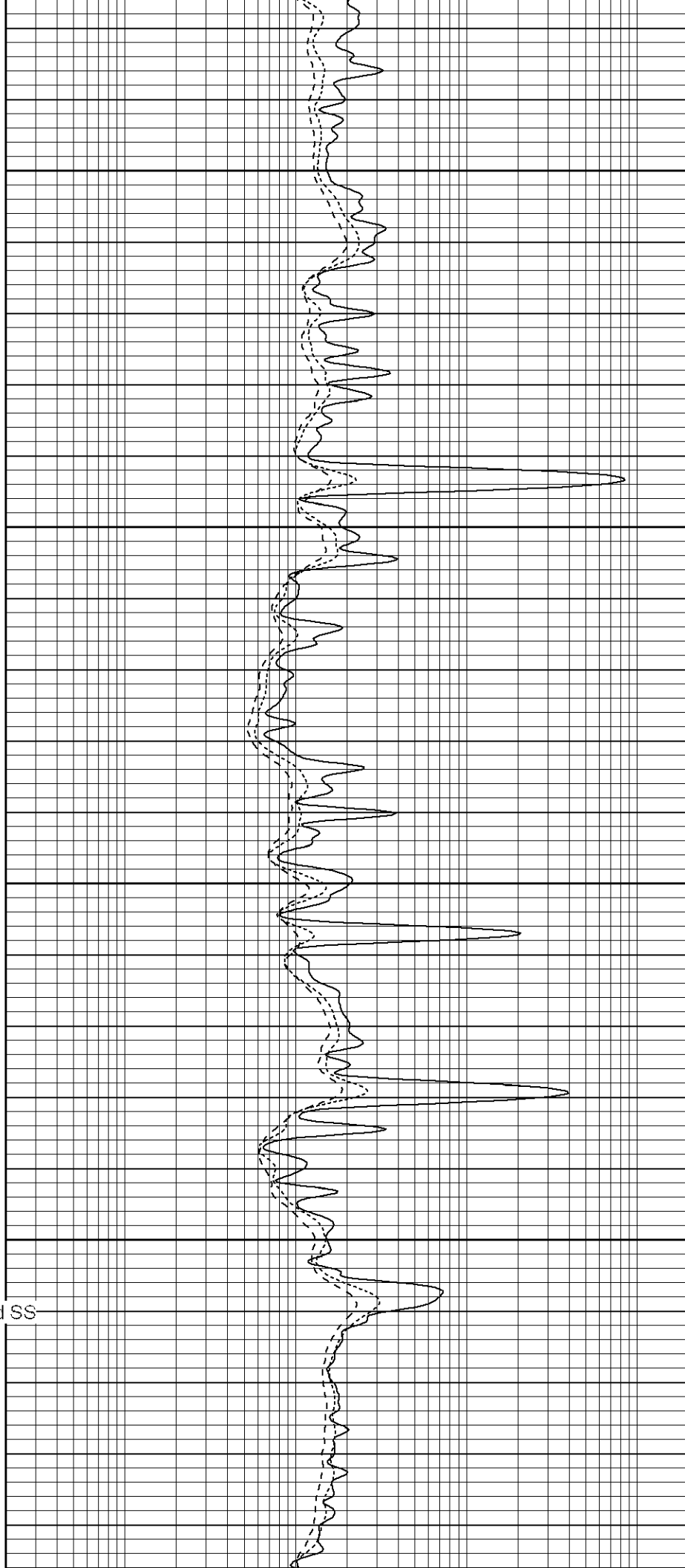
2000

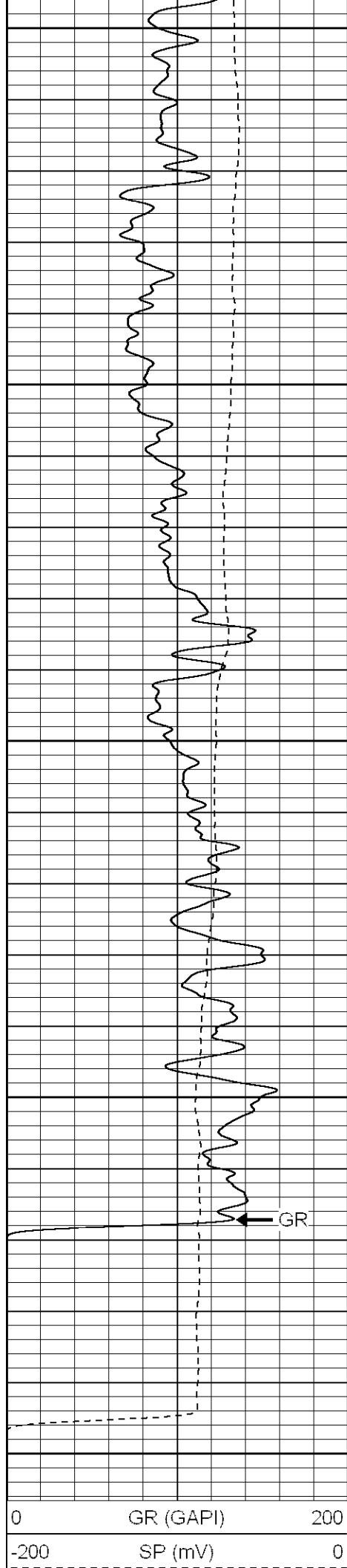
2050

2100

2150

Top Of Trinidad SS





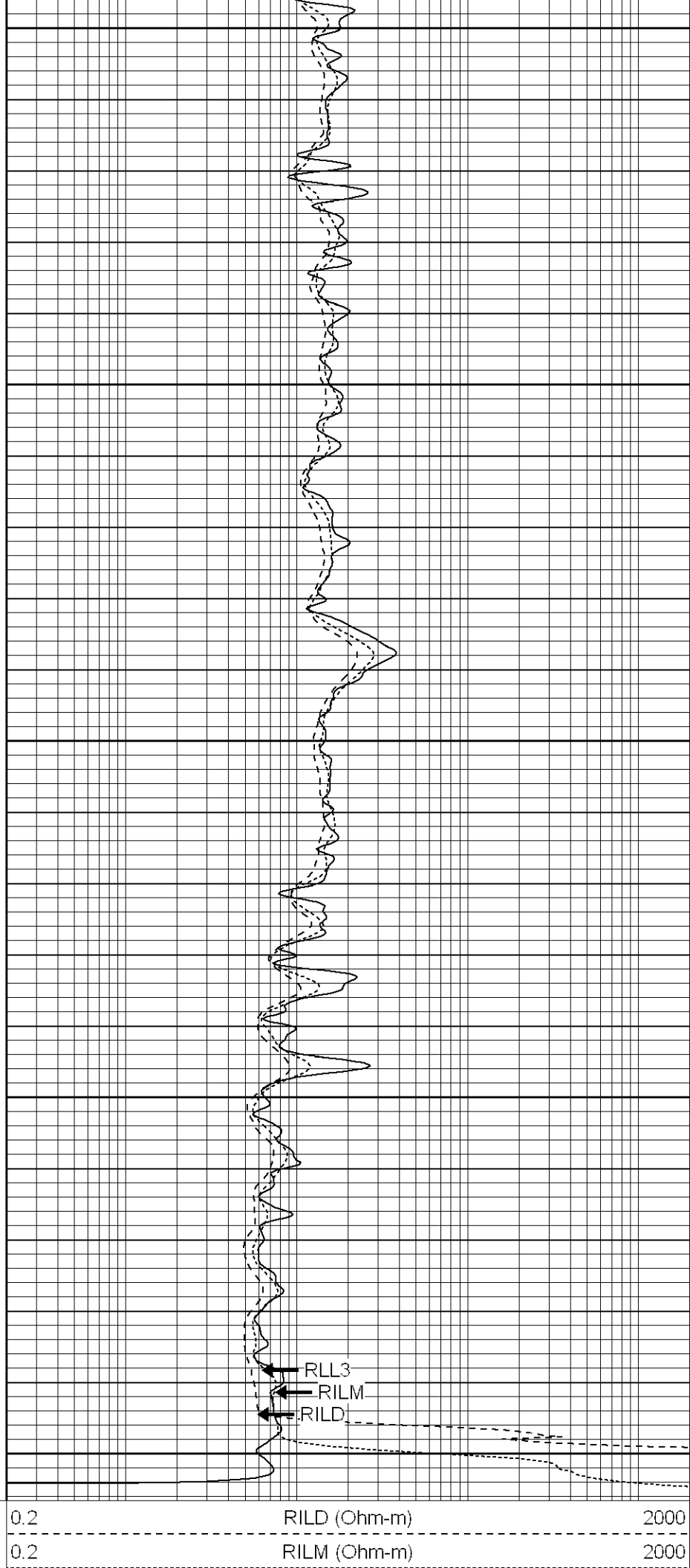
2200

2250

2300

2350

2400



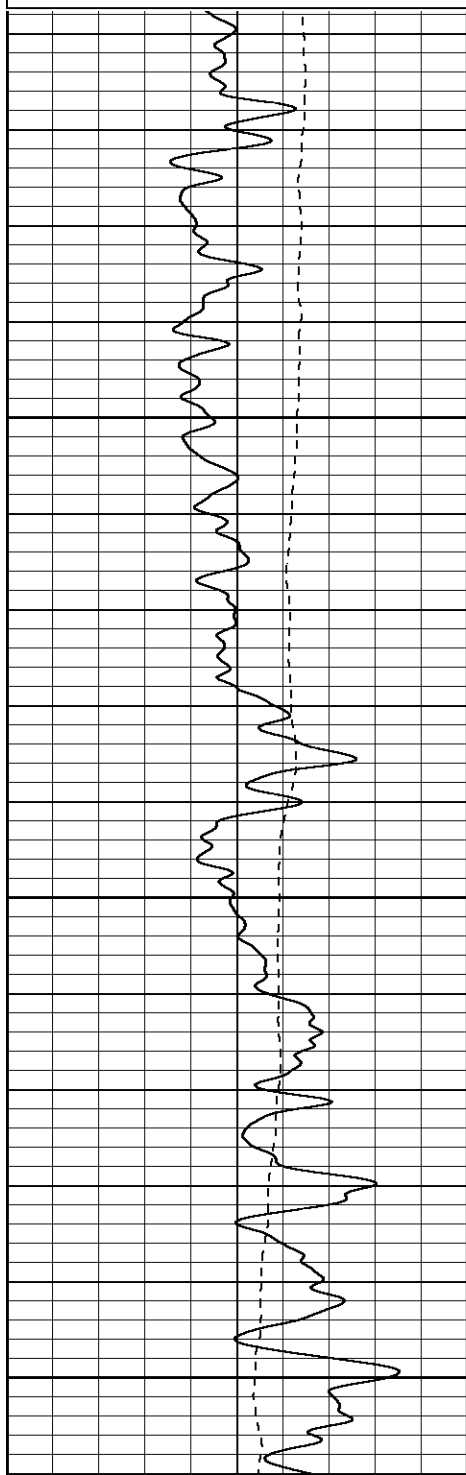
**SUPERIOR**Black Lick, Pa.
Meroer, Pa.
Wooster, Oh.
Cleveland, Ok.
Trinidad, Co.

Repeat Pass

Database File: xtone3605.db
Dataset Pathname: pass1.1
Presentation Format: dil
Dataset Creation: Fri Feb 15 08:58:52 2008 by Calc Open-Cased 070814
Charted by: Depth in Feet scaled 1:240

0	GR (GAPI)	200
-200	SP (mV)	0

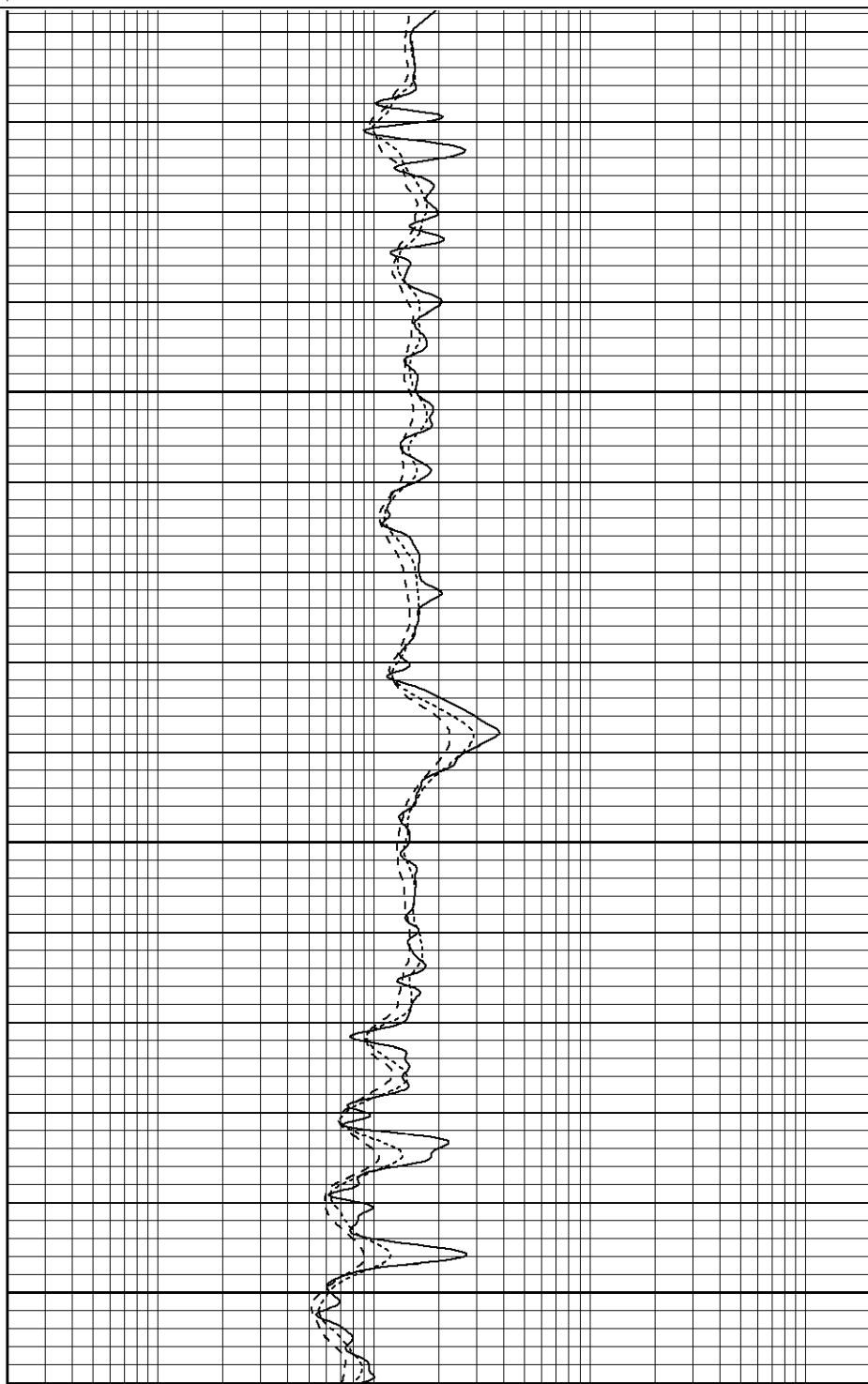
0.2	RILD (Ohm-m)	2000
0.2	RILM (Ohm-m)	2000
0.2	RLL3 (Ohm-m)	2000

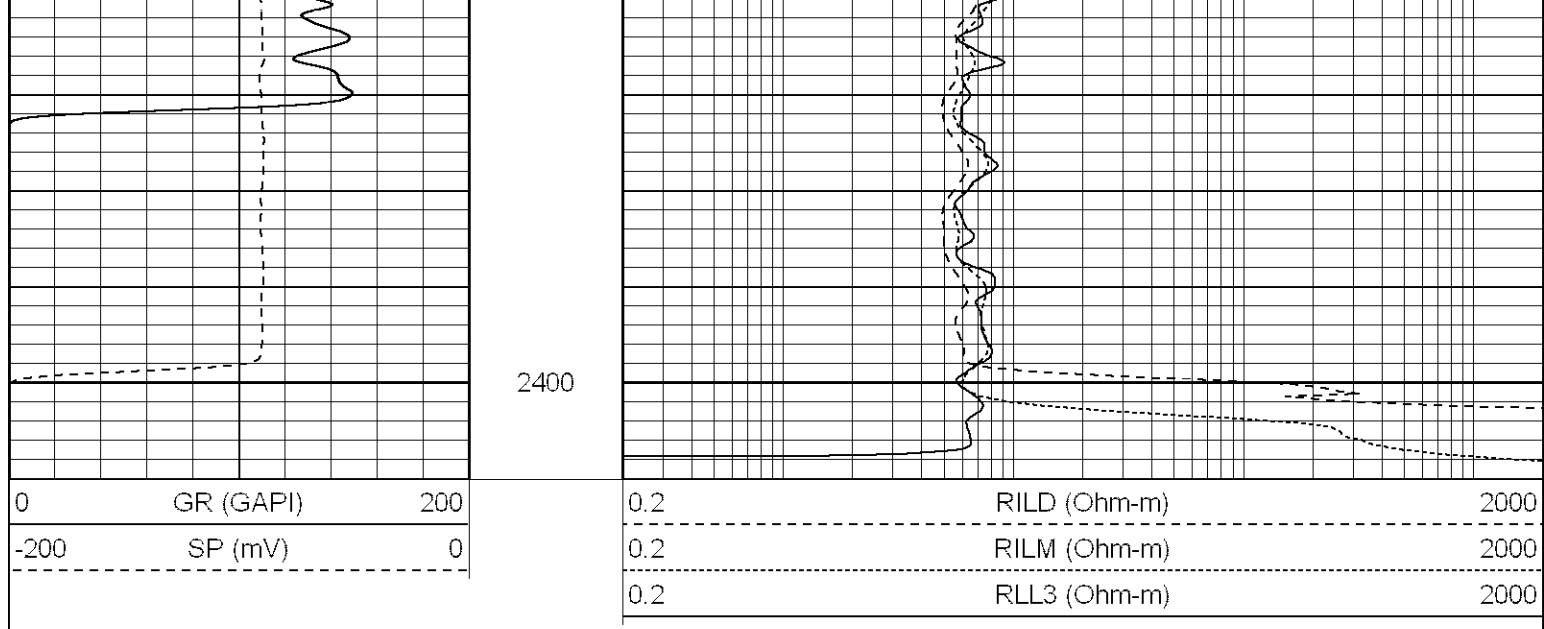


2250

2300

2350





Calibration Report

Database File: xtone3605.db
 Dataset Pathname: pass1
 Dataset Creation: Fri Feb 15 07:46:57 2008 by Log Open-Cased 070814

Dual Induction Calibration Report

Serial-Model: 5375-G
 Surface Cal Performed: Tue Feb 12 11:33:28 2008
 Downhole Cal Performed: Tue Feb 12 11:35:02 2008

Surface Calibration

Readings				References			Results	
Loop:	Air	Loop		Air	Loop		m	b
Deep	0.008	0.627	V	0.000	500.000	mmho-m	807.269	-6.223
Medium	0.010	0.749	V	0.000	550.000	mmho-m	744.131	-7.221
Internal:	Zero	Cal		Zero	Cal		m	b
Deep	0.008	0.628	V	0.000	500.000	mmho-m	806.482	-6.237
Medium	0.010	0.749	V	0.000	550.000	mmho-m	744.204	-7.127

Downhole Calibration

Readings				References			Results	
Internal:	Zero	Cal		Zero	Cal		m	b
Deep	0.256	500.305	mmho-m	0.020	500.507	mmho-m	1.001	-0.237
Medium	0.259	549.900	mmho-m	-0.095	549.850	mmho-m	1.001	-0.354
Shallow	2.515	0.018	V	500.000	2.000	Ohm-m	125.000	-3.000

Compensated Density Calibration Report

Serial-Model: 902-2.75POH
 Source / Verifier: /
 Master Calibration Performed: Thu Jan 31 13:50:50 2008

Master Calibration

Density Far Detector Near Detector

Magnesium	1.710	g/cc	1164.05	575.44	cps
Aluminum	2.590	g/cc	207.67	288.30	cps
Spine Angle = 68.15			Density/Spine Ratio = 0.474		
	Size		Reading		
Small Ring	7.95	in	2.15	V	
Large Ring	17.00	in	4.64	V	

Neutron Calibration Report					
Serial Number:	802				
Tool Model:	2.75POH				
Performed:	Fri Feb 01 09:47:24 2008				
Calibrator Value:	1		NAPI		
Calibrator Reading:	1		cps		
Sensitivity:	1		NAPI/cps		
Gamma Ray Calibration Report					
Serial Number:	801				
Tool Model:	2.75POH				
Performed:	Fri Feb 01 08:19:35 2008				
Calibrator Value:	1.0		GAPI		
Background Reading:	0.0		cps		
Calibrator Reading:	1.0		cps		
Sensitivity:	0.8000		GAPI/cps		

Sensor	Offset (ft)	Schematic	Description	Len (ft)	OD (in)	Wt (lb)
GR	38.34		None	0.75	1.50	5.00
			GR-2.75POH (801) Probe	3.73	2.75	43.00
NEU	32.80		NEU-2.75POH (802) Probe Epithermal	4.75	2.75	58.00
LSD DCAL SSD	24.97		CDL-2.75POH (902) Probe	8.43	2.75	106.00
	24.70					
	24.45		Probe	0.89	3.50	20.00

