

BRAN-DEX		WIRELINE SERVICES	
CEMENT BOND		GAMMA RAY	
COLLAR CORRELATION LOG			
Company K.P.KAUFFMAN CO. Well ANDERSON 14-32 Field WATTENBERG County WELD State COLORADO		Company K.P.KAUFFMAN CO. Well ANDERSON 14-32 Field WATTENBERG County WELD State COLORADO	
Location: API #: 05-123-23792-00 SE / SW		Permanent Datum GROUND LEVEL Elevation 4938 Log Measured From KELLY BUSHING Drilling Measured From KELLY BUSHING	
Other Services NONE		Elevation K.B. 4950 D.F. 4949 G.L. 4938	
Run Number ONE		Date 03-MARCH-2007	
Depth Driller 7892		Run Number ONE	
Depth Logged Interval 7844		Depth Driller 7851	
Top Log Interval 3550		Depth Logged Interval 7844	
Open Hole Size 7 7/8		Top Log Interval 3550	
Type Fluid WATER		Open Hole Size 7 7/8	
Density / Viscosity NOT RECORDED		Type Fluid WATER	
Estimated Cement Top 3708		Density / Viscosity NOT RECORDED	
Time Well Ready --		Estimated Cement Top 3708	
Equipment Number 455/MAST/WHITE		Time Well Ready --	
Location BRIGHTON		Equipment Number 455/MAST/WHITE	
Recorded By HAYES		Location BRIGHTON	
Witnessed By MR.RICK OHLEMEIR		Recorded By HAYES	
Borehole Record		Witnessed By MR.RICK OHLEMEIR	
Run Number		Borehole Record	
Bit		Run Number	
From		Bit	
To		From	
Size		To	
Weight		Size	
From		Weight	
To		From	
Tubing Record		To	
Casing Record		Tubing Record	
Size		Casing Record	
WGT/FT		Size	
Top		WGT/FT	
Bottom		Top	
Surface String		Bottom	
Prot. String		Surface String	
Production String		Prot. String	
Liner		Production String	
4.5		Liner	
11.6		4.5	
SURFACE		11.6	
TOTAL DEPTH		SURFACE	

<<< Fold Here >>>

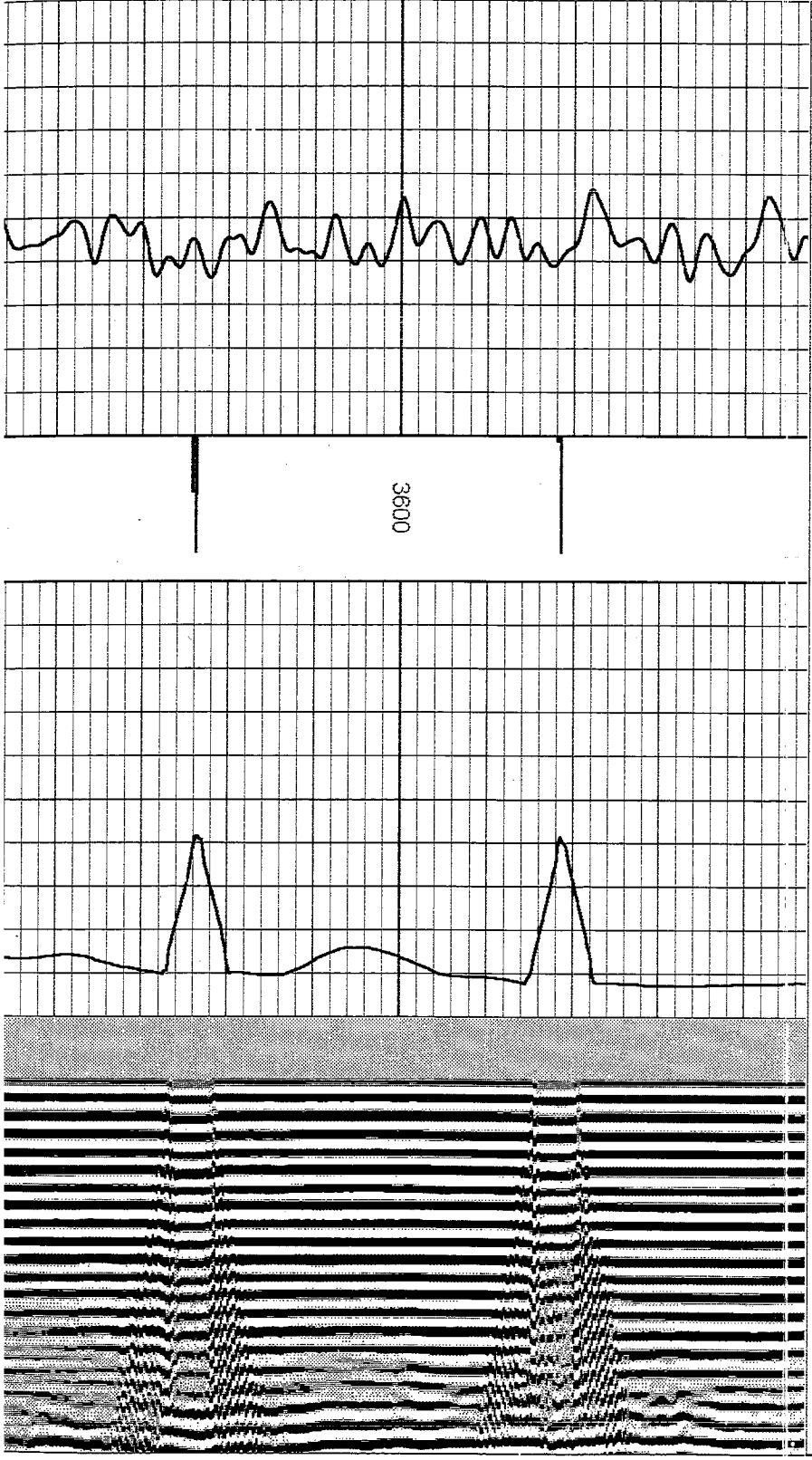
All interpretations are opinions based on inferences from electrical or other measurements and we cannot and do not guarantee the accuracy or correctness of any interpretation, and we shall not, except in the case of gross or willful negligence on our part, be liable or responsible for any loss, costs, damages, or expenses incurred or sustained by anyone resulting from any interpretation made by any of our officers, agents or employees. These interpretations are also subject to our general terms and conditions set out in our current Price Schedule.

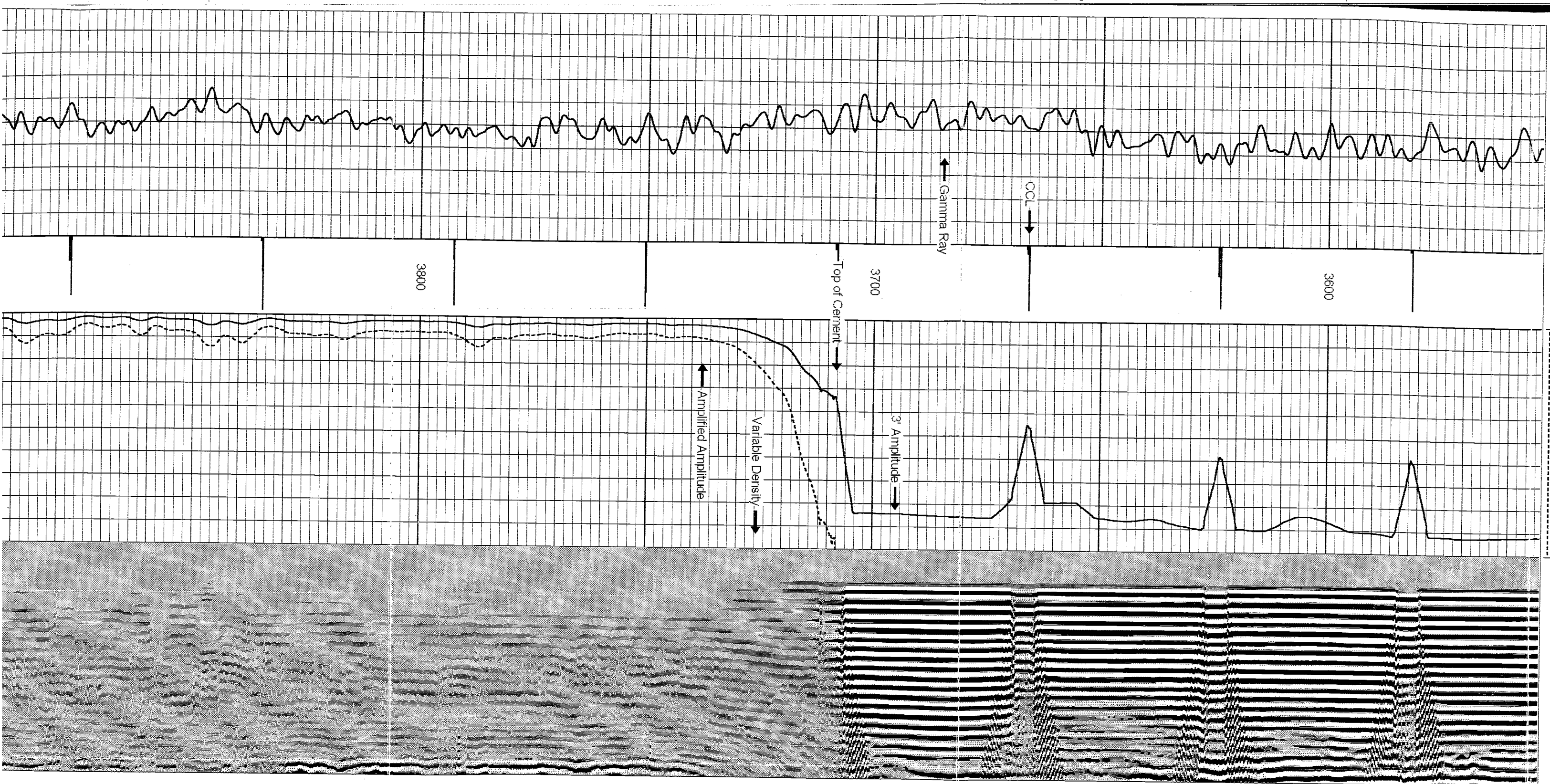
Comments

LOG CORRELATED TO CD-CN LOG DATED 2-15-2007
LOG SPLIT AT 5500 FOR CORRELATION PURPOSES

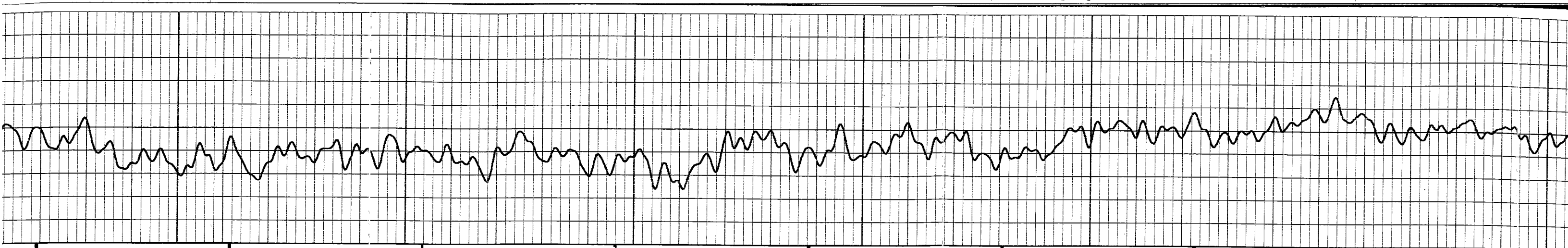
Database File: anderson 14-32.dtb
 Dataset Pathname: pass3
 Presentation Format: cbix
 Dataset Creation: Fri Mar 02 11:18:33 2007 by Log Warrior 7.0 STD Cas
 Charted by: Depth in Feet scaled 1:240

0	Gamma Ray (GAPI)	180 -2	CCL -3.5	0	Amplitude (mV)	85	200	Variable Density	1200
0				0	Amplified Amplitude (mV)	30			





Amplitude (mV)

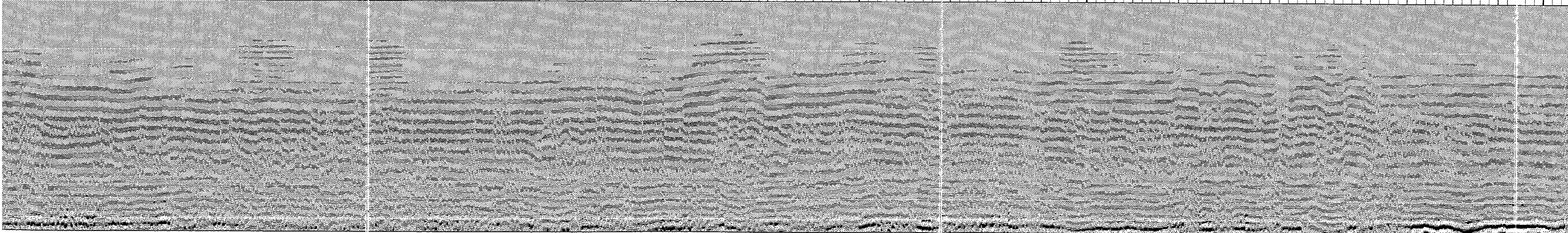
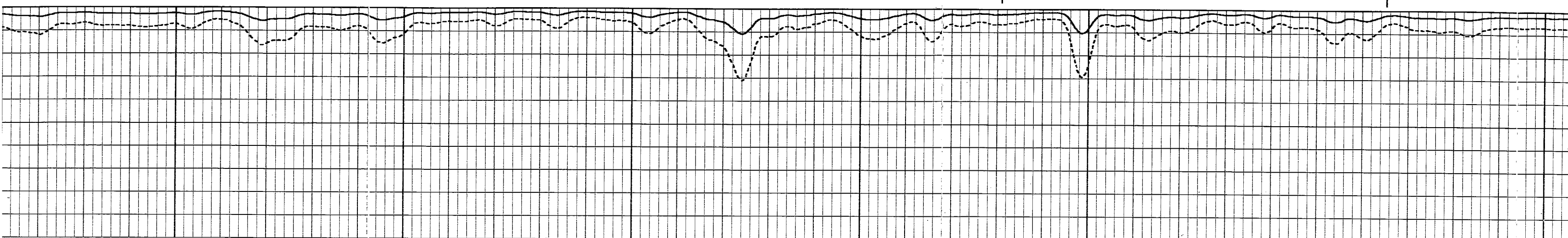


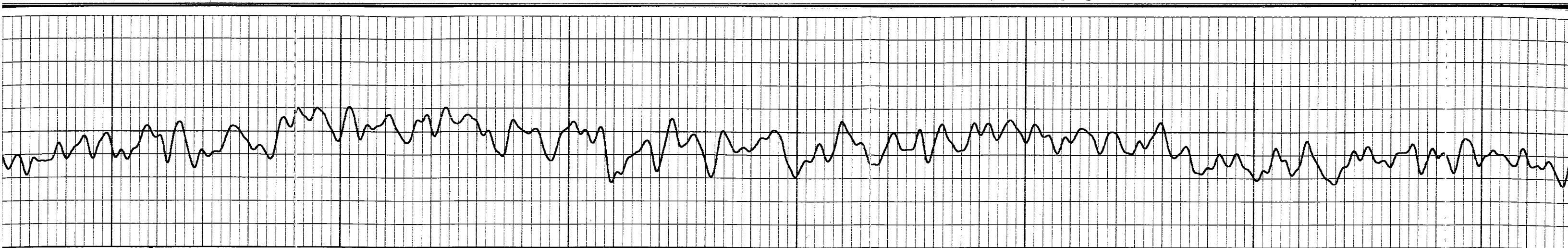
4100

4000

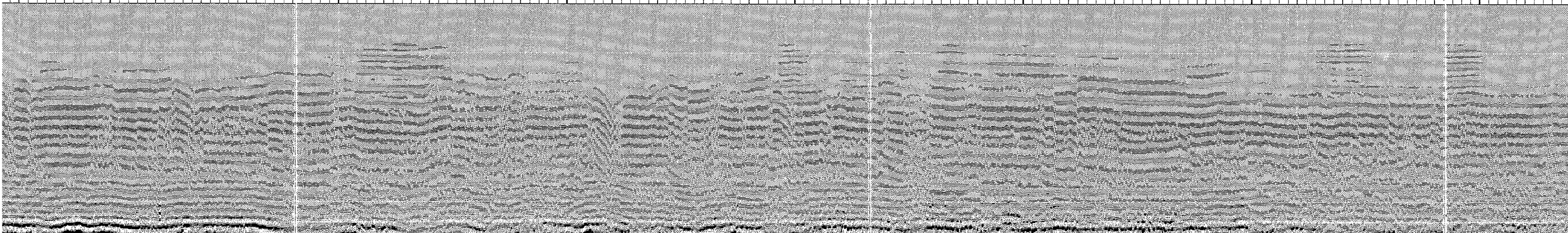
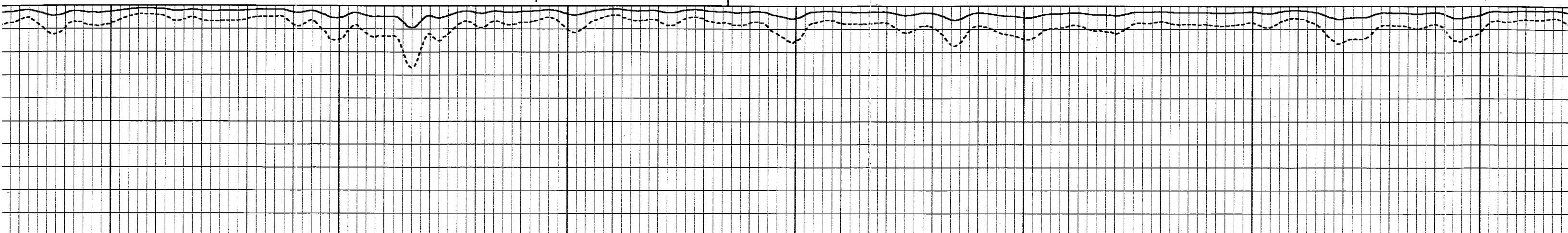
3900

3800





4300
4200
4100



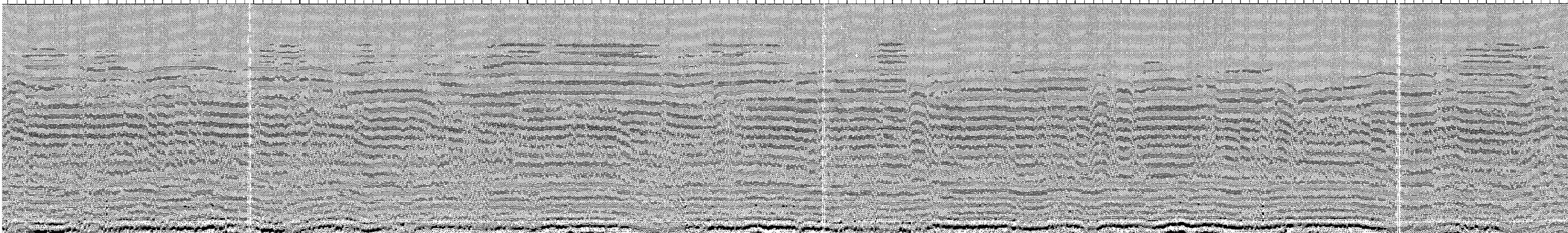
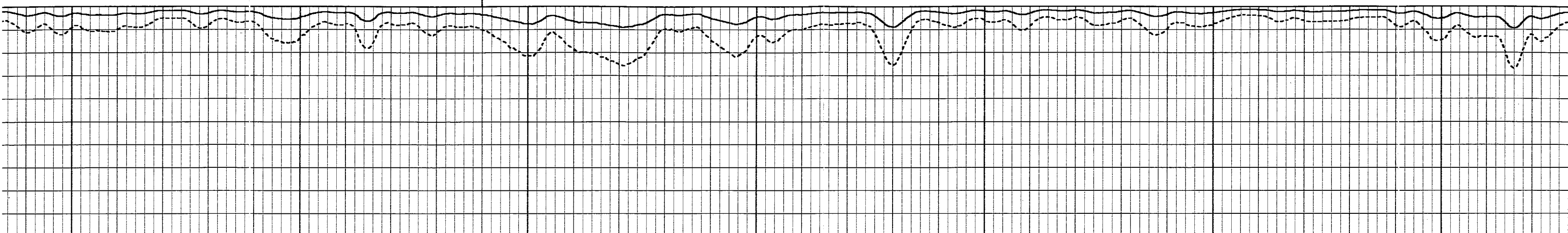


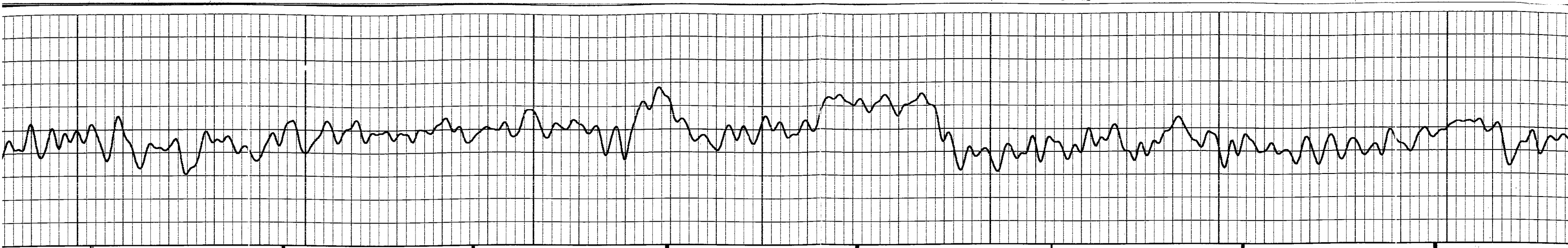
4600

4500

4400

4300





4800

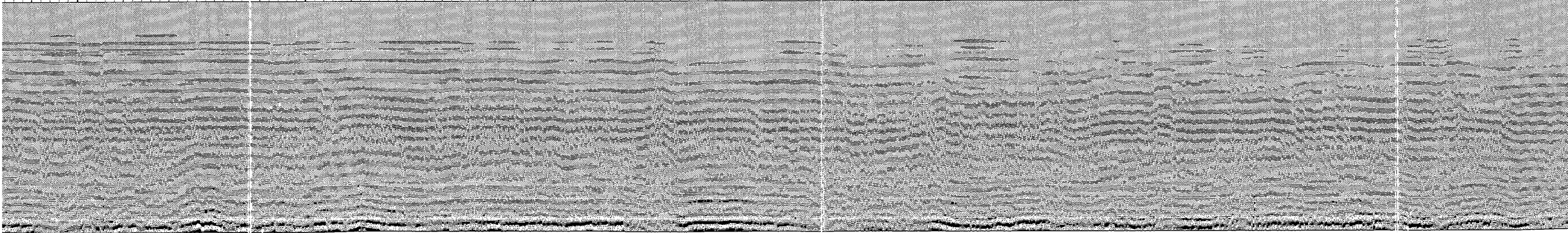
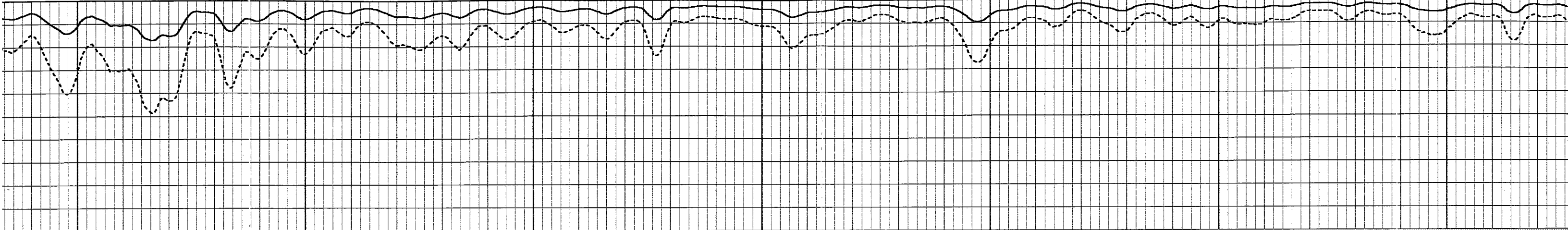
4700

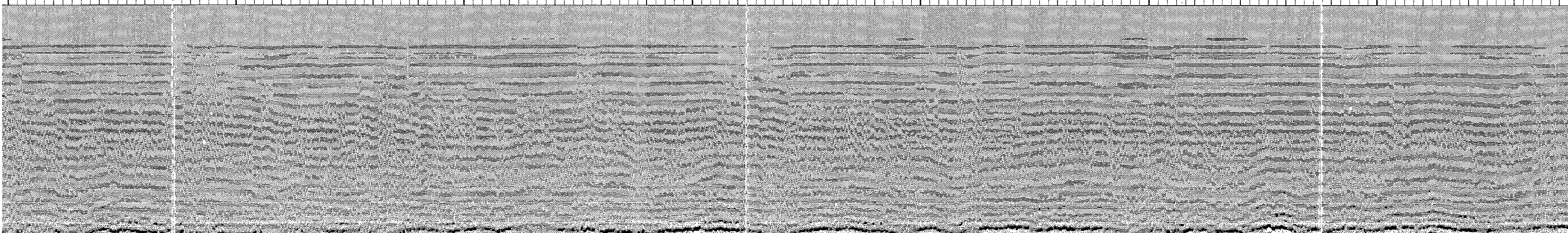
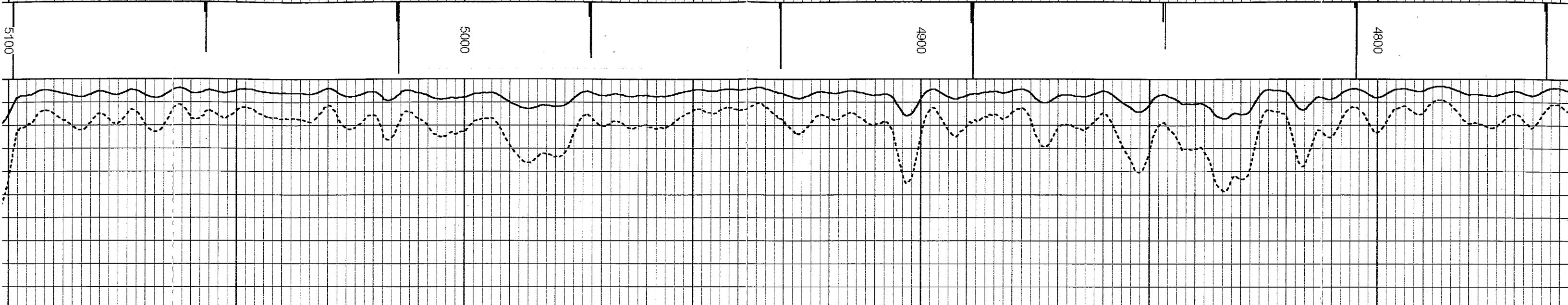
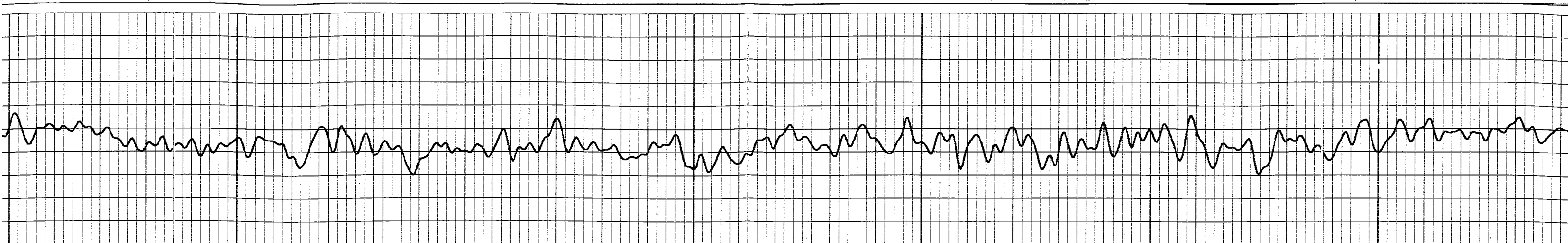
4600

4500

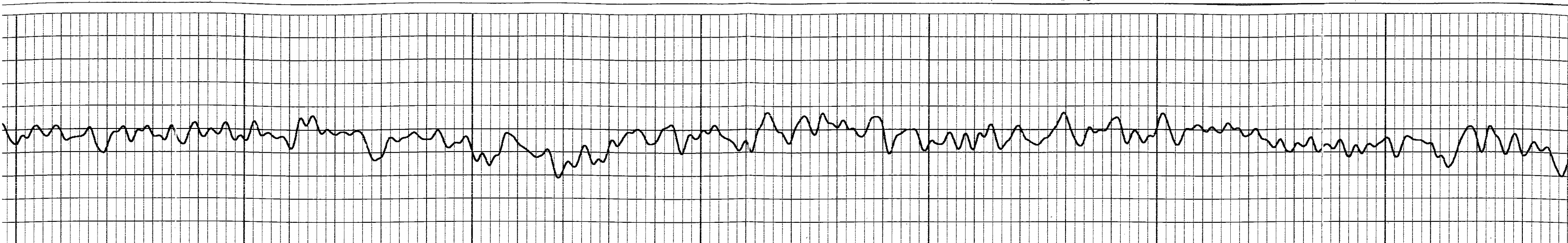
4400

4300





5100
5000
4900
4800



5300

5200

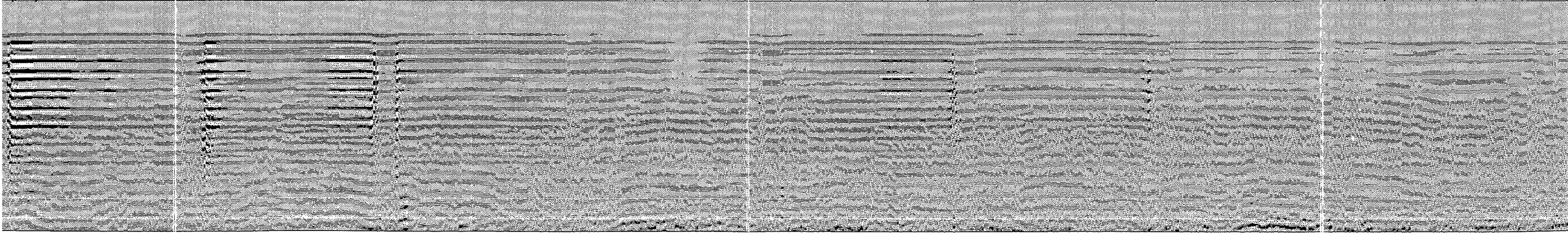
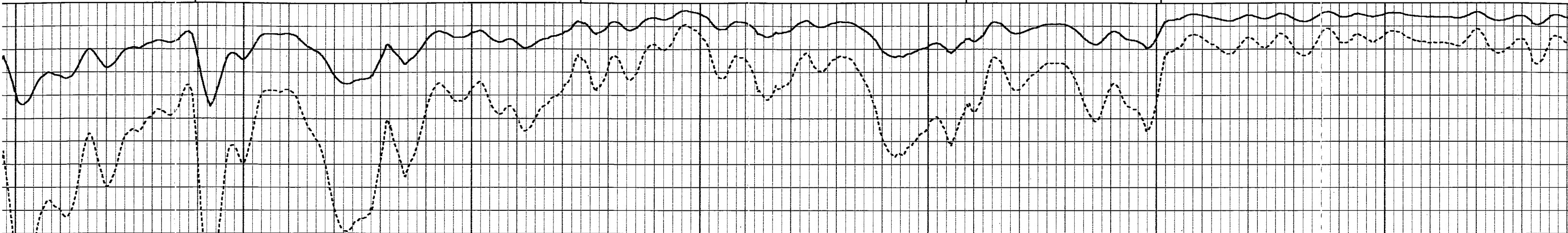
5100

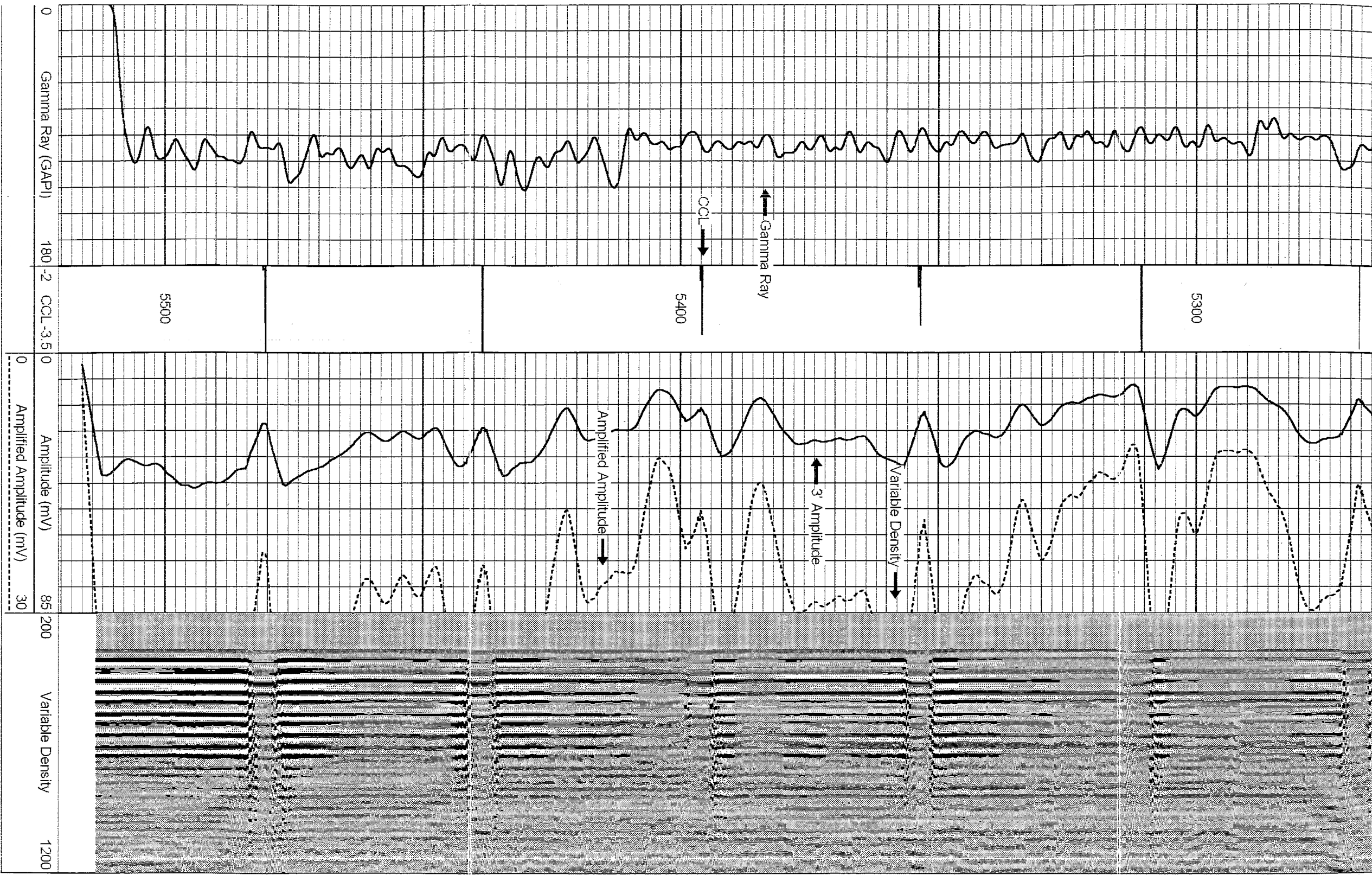
5000

4900

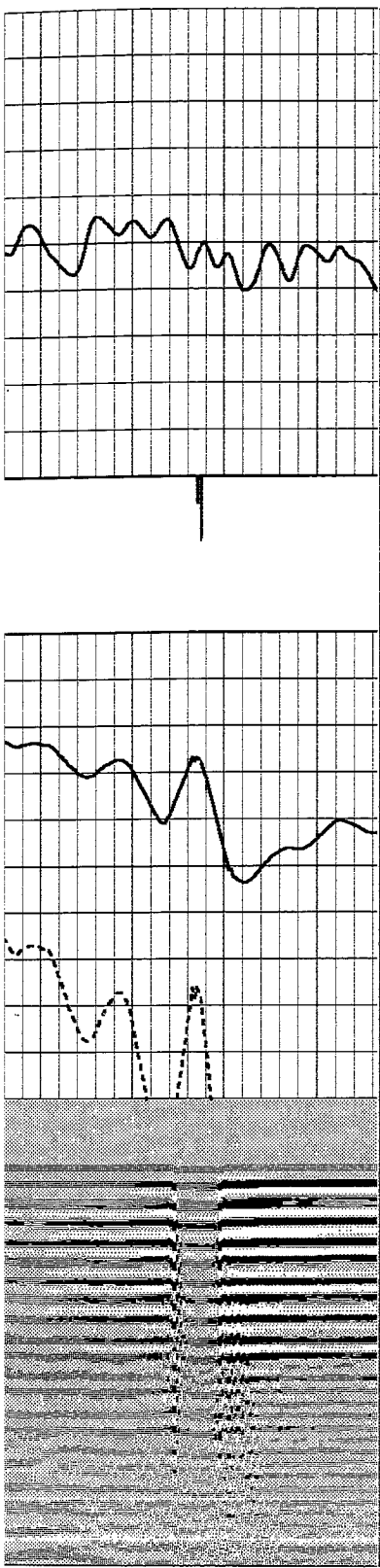
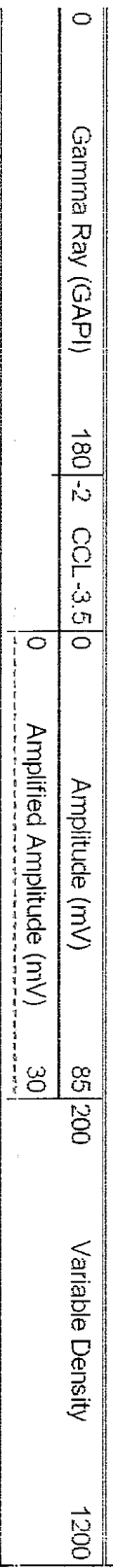
4800

4700





Database File: anderson 14=32.db
 Dataset Pathname: pass2
 Presentation Format: cbx
 Dataset Creation: Fri Mar 02 10:43:49 2007 by Log Warrior 7.0 STD Cas
 Chartist by: Depth in Feet scaled 1:240

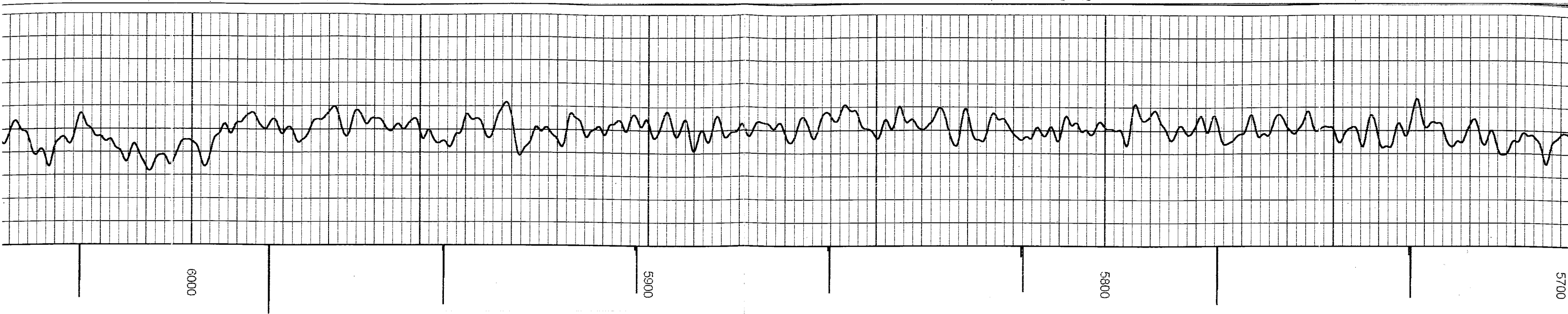


Database File: anderson 14=32.db
 Dataset Pathname: pass2
 Presentation Format: cbk
 Dataset Creation: Fri Mar 02 10:43:49 2007 by Log Warrior 7.0 STD Cas
 Chartist by: Depth in Feet scaled 1:240

0	Gamma Ray (GAPI)	180 -2	CCL -3.5	0	Amplitude (mV)	85	200	Variable Density	1200
---	------------------	--------	----------	---	----------------	----	-----	------------------	------

0	Gamma Ray (GAPI)	180 -2	CCL -3.5	0	Amplitude (mV)	85	200	Variable Density	1200
0	Amplified Amplitude (mV)	30							



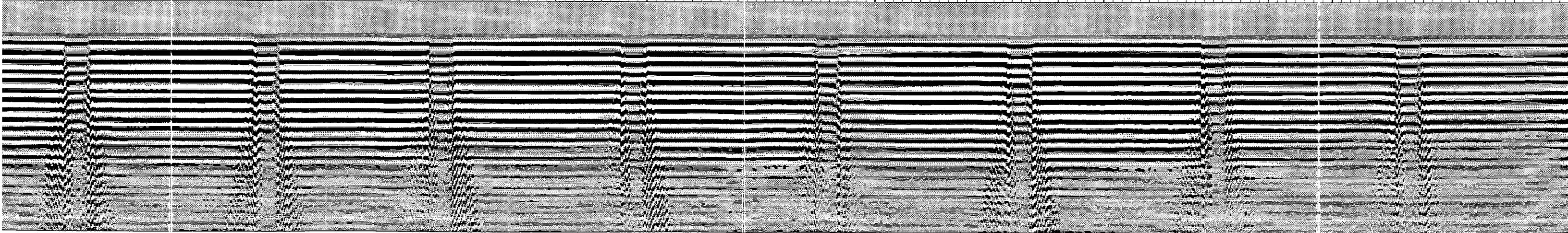
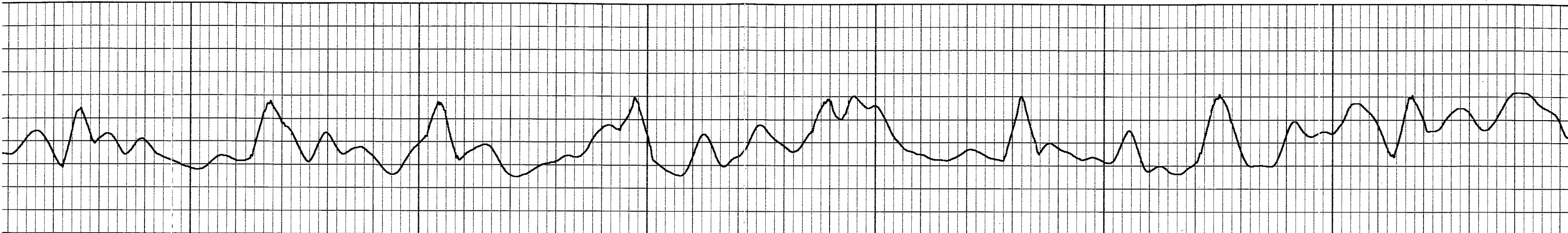


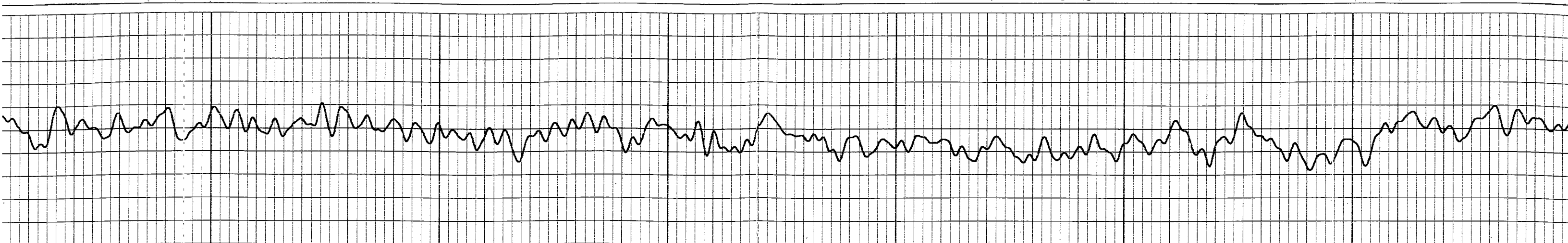
6000

5900

5800

5700

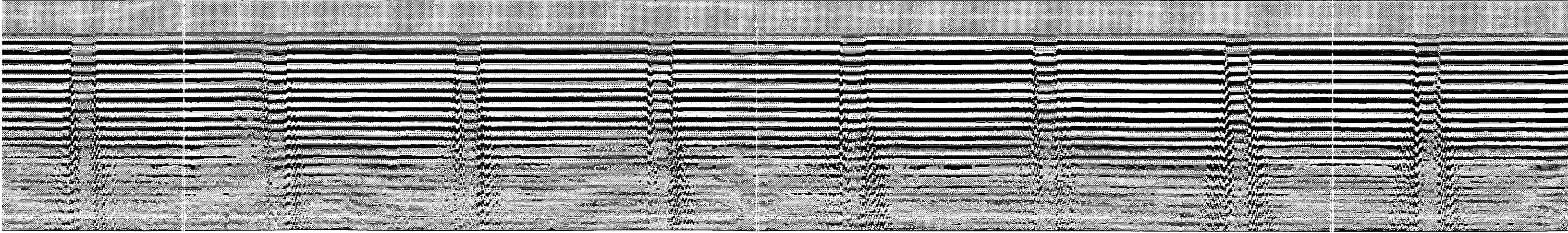
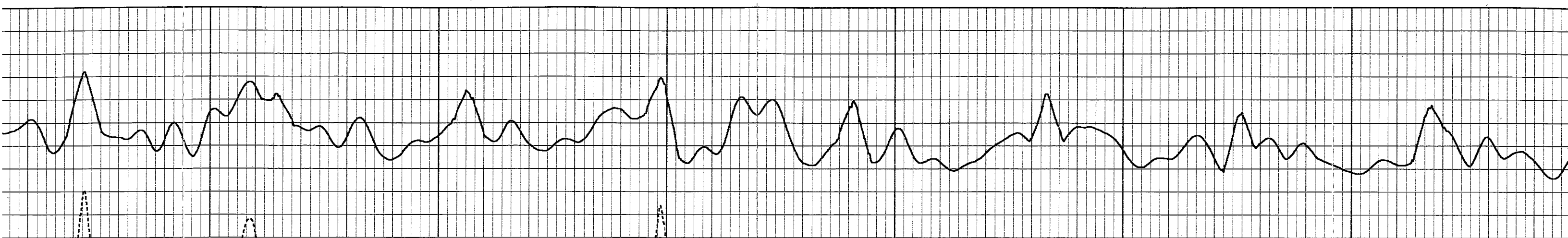


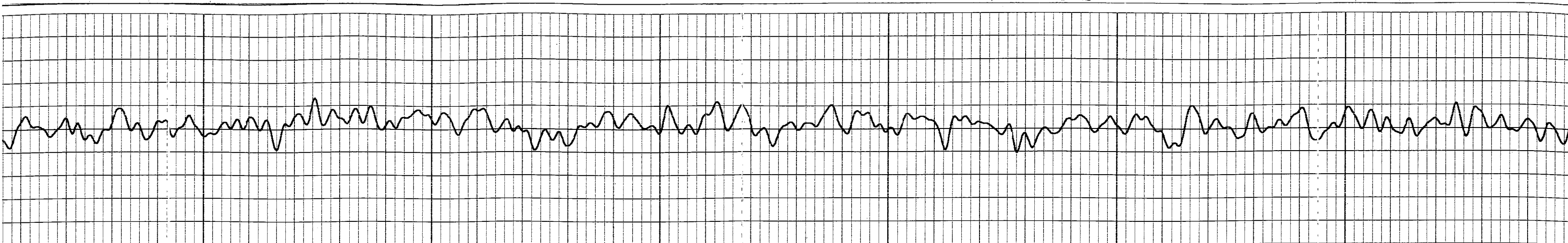


6200

6100

6000

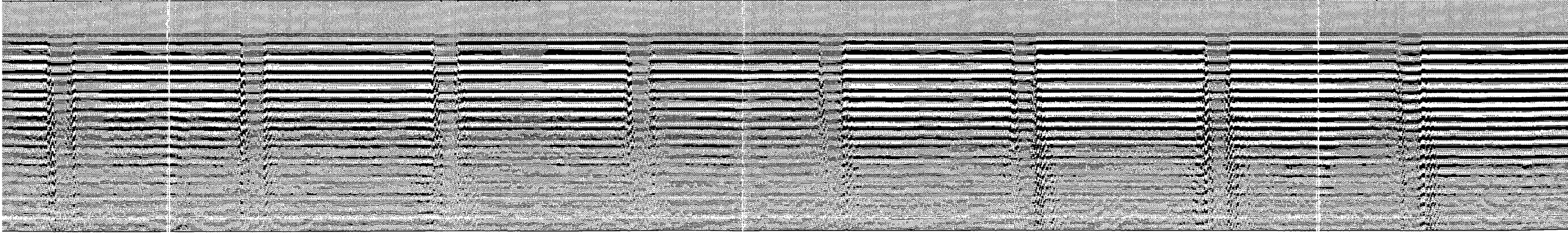
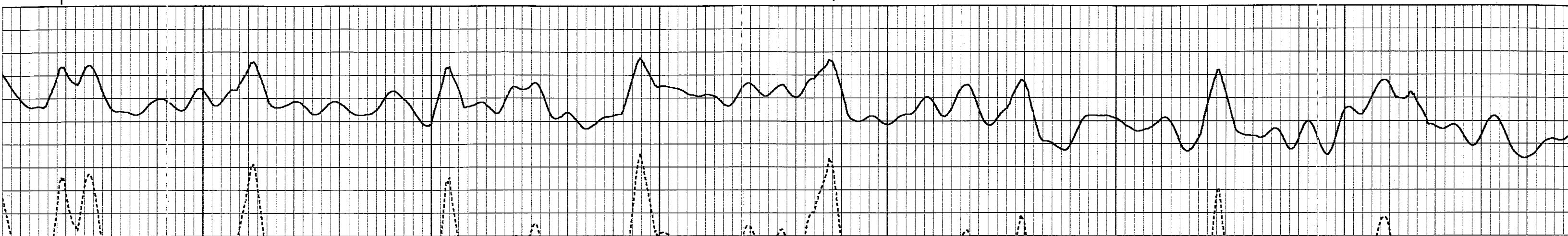


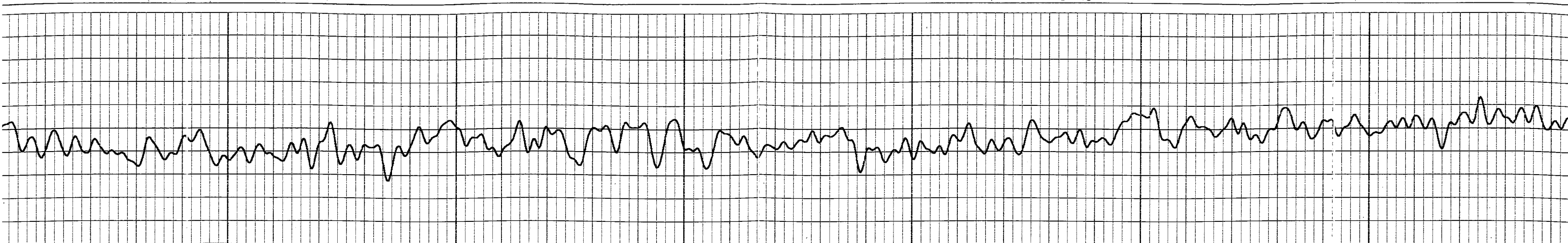


6500

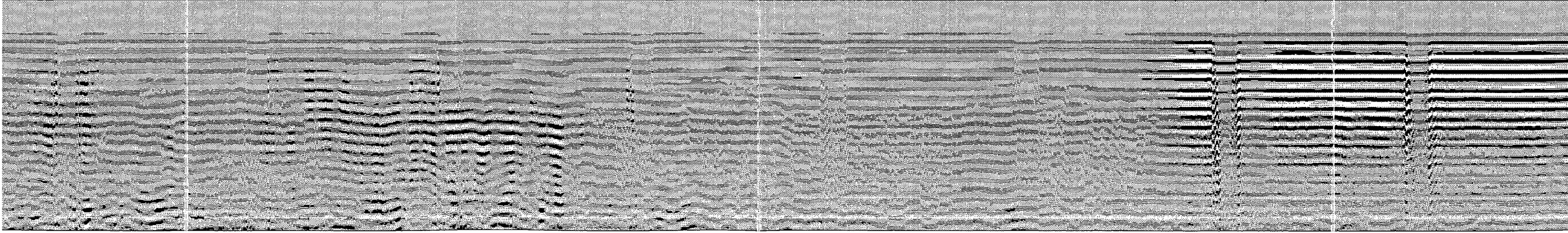
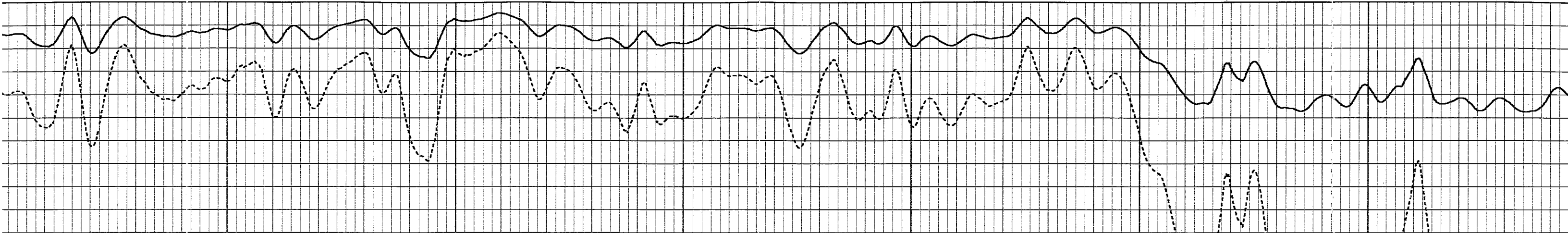
6400

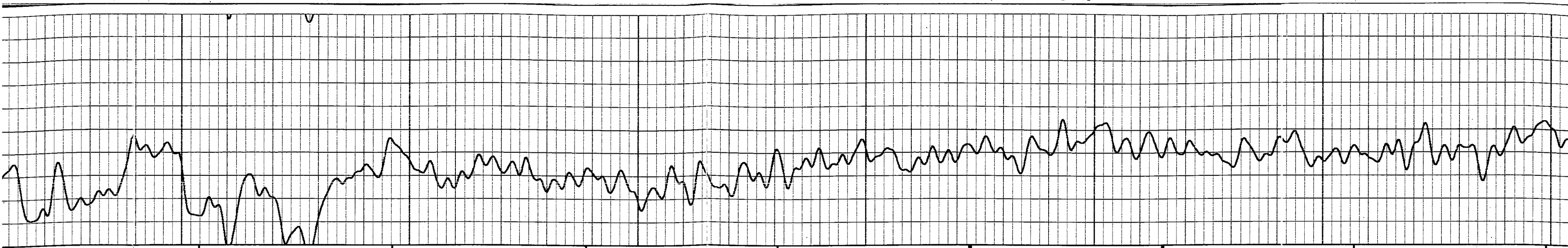
6300



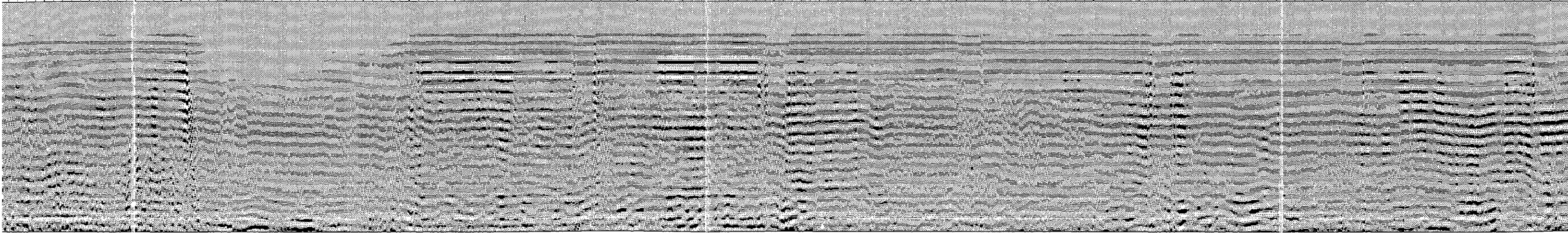
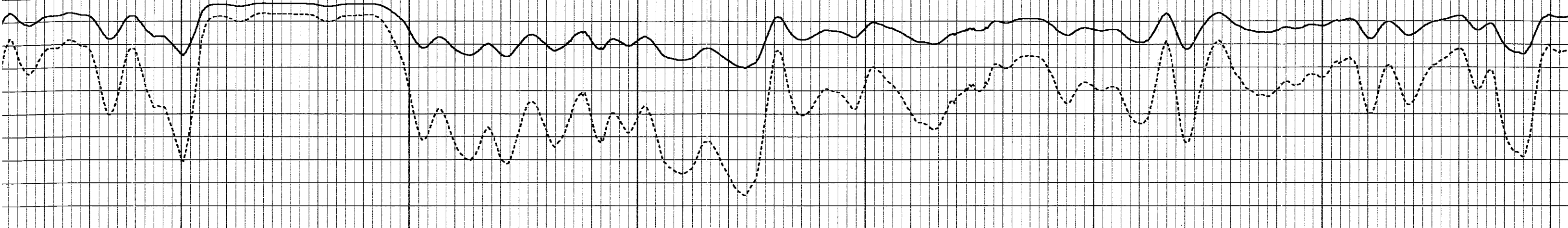


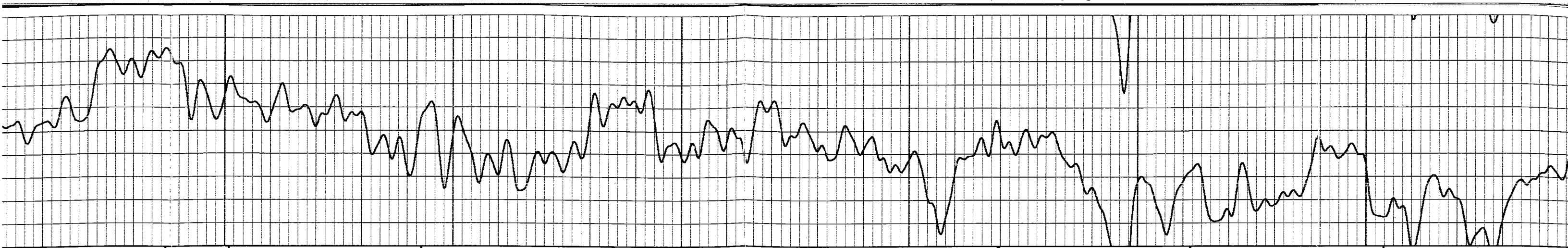
6700 6600 6500





7000 6900 6800 6700



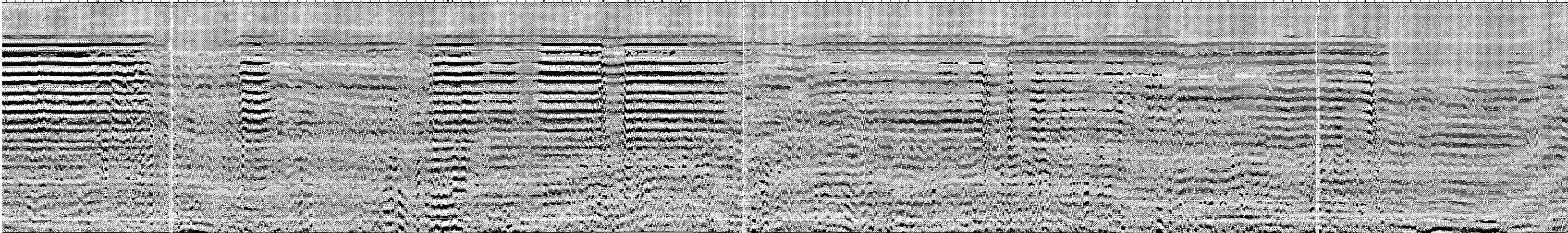
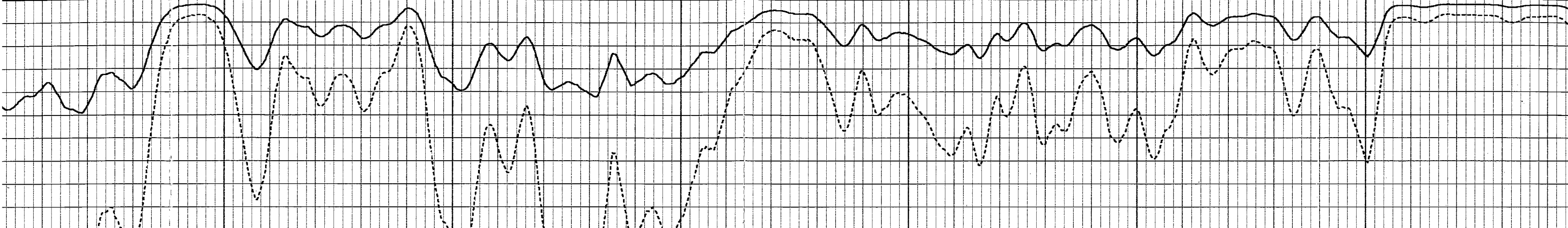


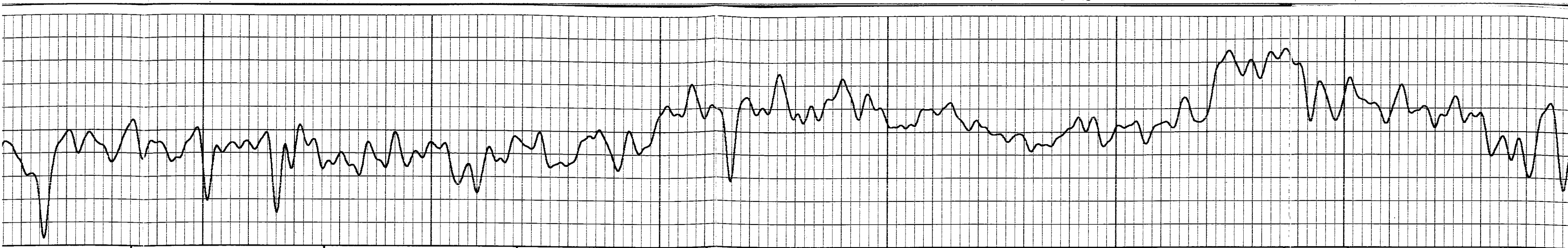
marker joint

7200

7100

7000



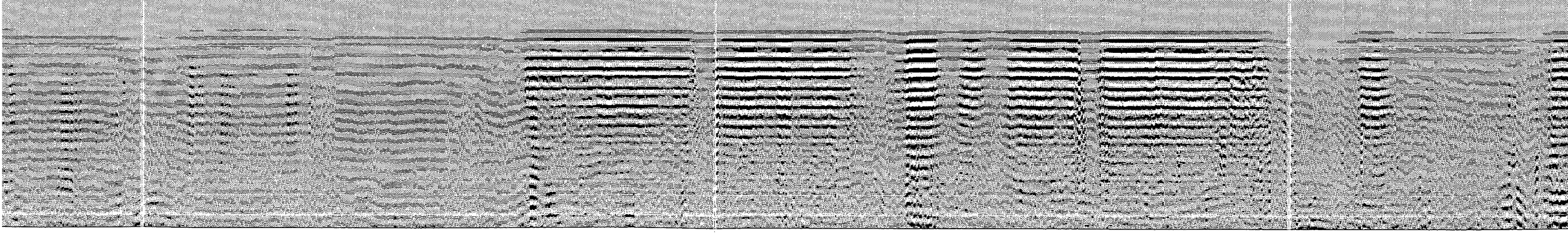
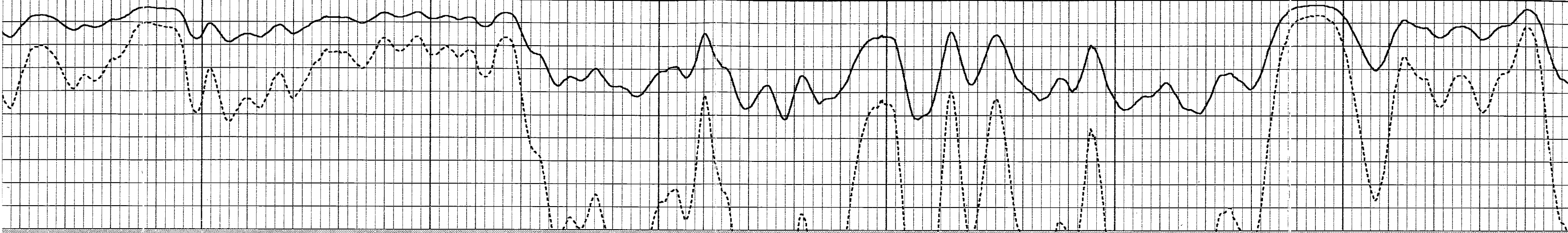


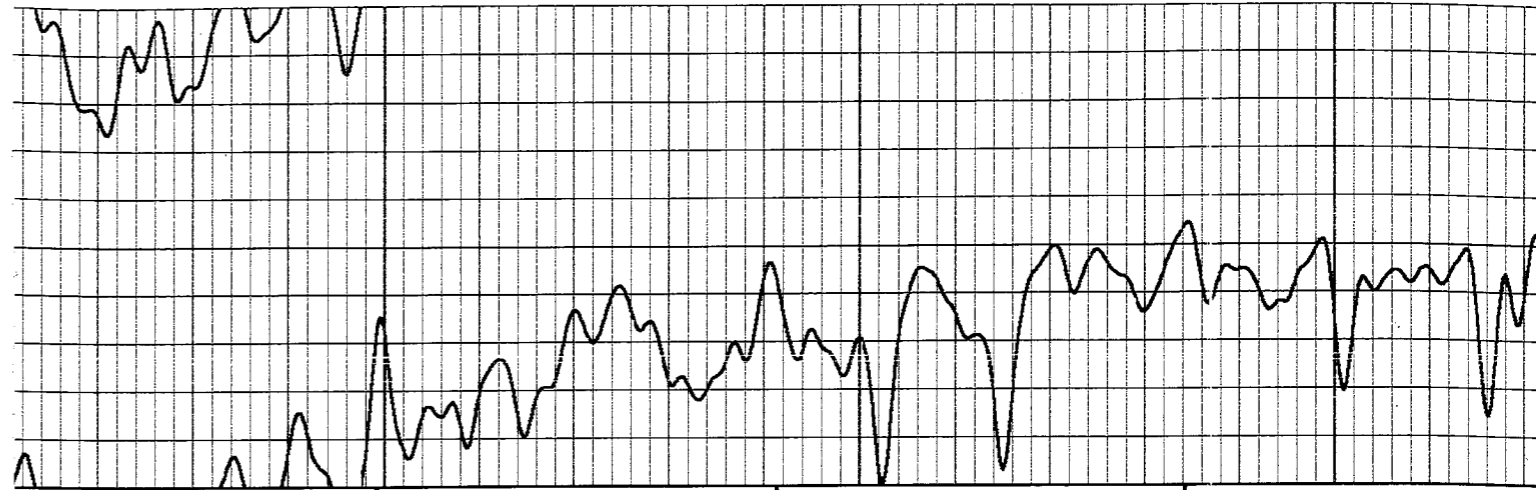
7500

7400

7300

markert joint





7600

7500

