

HALLIBURTON

Gamma Ray C.C.L.
Cement Bond V.D.L.

Company Encana Oil & Gas (USA) Inc.
Well Lumry 6-4-24
Field Wattenberg
County Boulder State Colorado

Company Encana Oil & Gas (USA) Inc.
Well Lumry 6-4-24
Field Wattenberg
County Boulder State Colorado

API No.: 05-013-06576-00 Serv #:
Location: SHL: 884' FNL & 1015' FEL
BHL: 2590' FNL & 1320' FEL
NE NE

Other Services

Sec: 24 Twp: 1N Rge: 69W

Permanent Datum GL Elevation 5081
Log Measured From KB 15 Ft. above perm. datum
Drilling Measured From KB

Elevation
K.B. 5096
D.F. 5095
G.L. 5081

Date @ Time Logged June 2, 2008
Run No. One
Depth - Driller 8710
Depth - Logger 8604
Bottom - Logged Interval 8602
Top - Log Interval 6819
Max. Recorded Temp. NOT RECORDED
CEMENTING DATA Surface String

Type Fluid in Hole
Density of Fluid
Fluid Level
Cement Top Est. Logged
Equipment / Location
Recorded by
Witnessed by
Production String
Liner

Date / Time Cemented
Primary / Squeeze
Expected Compressive Strength
Cement Volume
Cement Type / Weight
Formulation
Mud Type / Mud Wgt.

psi@ hrs
D.V. Tool @ TOC
psi@ hrs
TOC
psi@ hrs
psi@ hrs
psi@ hrs
psi@ hrs

sk
50/50 Premium /
1.340 Yield
1.5 Yield
/

Run Number Bit From To Size Weight From To
4.5 11.6 TD Surface

<<< Fold Here >>>

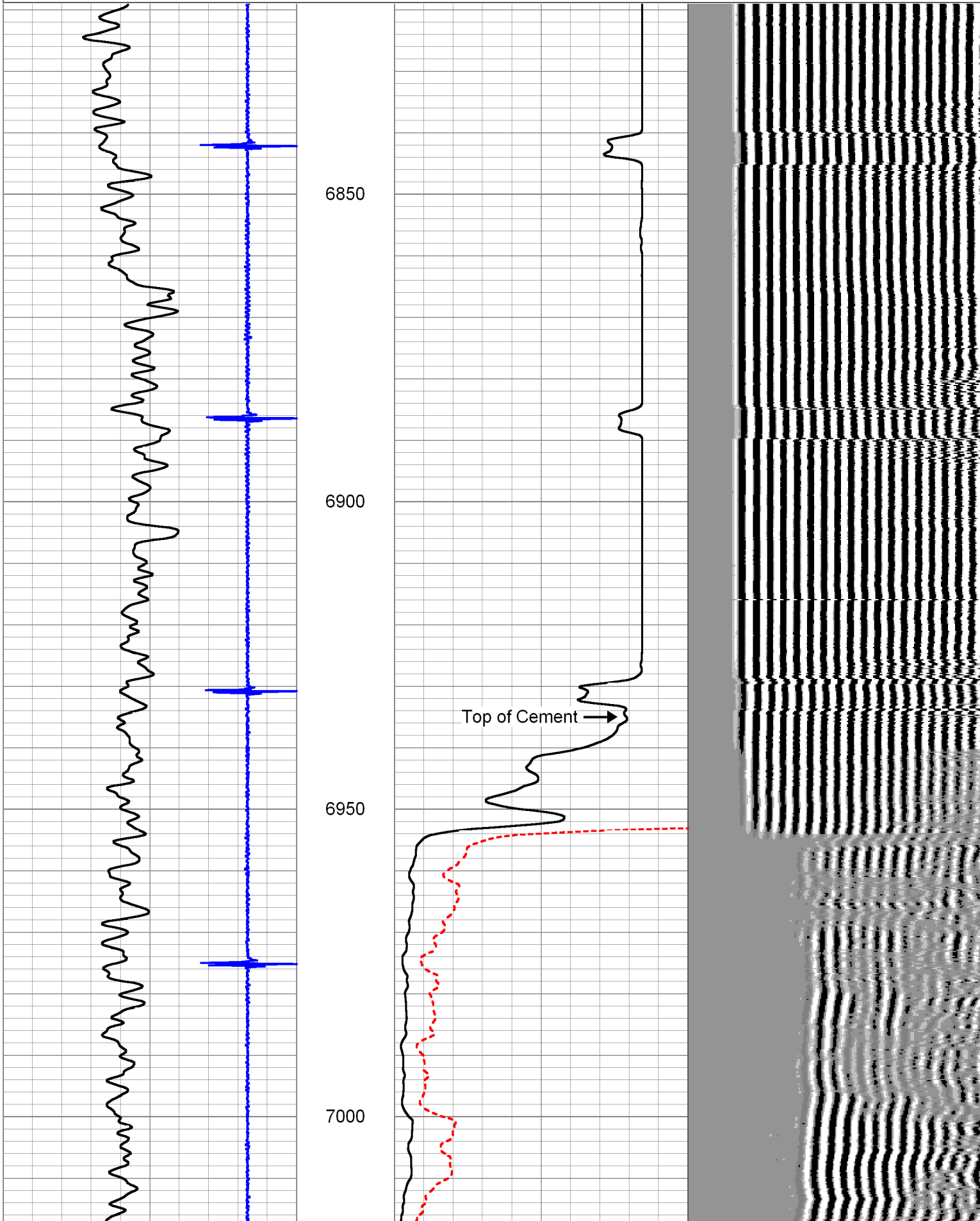
HALLIBURTON DOES NOT GUARANTEE THE ACCURACY OF ANY INTERPRETATION OF THE LOG DATA, CONVERSION OF LOG DATA TO PHYSICAL ROCK PARAMETERS OR RECOMMENDATIONS WHICH MAY BE GIVEN BY HALLIBURTON PERSONNEL OR WHCIH APPEAR ON THE LOG OR IN ANY OTHER FORM. ANY USER OF SUCH DATA, INTERPRETATIONS, CONVERSIONS, OR RECOMMENDATIONS AGREES THAT HALLIBURTON IS NOT RESPONSIBLE EXCEPT WHERE DUE TO GROSS NEGLIGENCE OR WILLFUL MISCONDUCT, FOR ANY LOSS, DAMAGES, OR EXPENSES RESULTING FROM THE USE THEREOF.

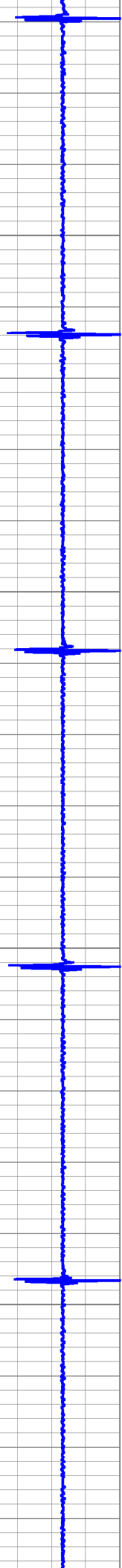
Comments

Corrected uphole 5' to correlate to PSI openhole log dated
May 17, 2008

Database File: lumry6-4-24.db
Dataset Pathname: pass3
Presentation Format: cbldig
Dataset Creation: Mon Jun 02 14:58:07 2008 by Log Halliburton Casedho

5	Collar Locator	-1	0	Amplified Amplitude (mV)	30	200	Variable Density	1200
0	Gamma Ray (GAPI)	300	0	Amplitude (mV)	100			



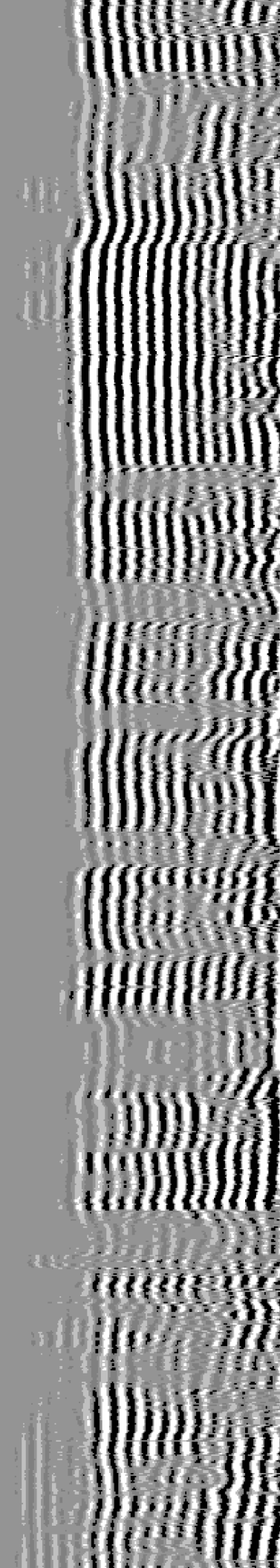
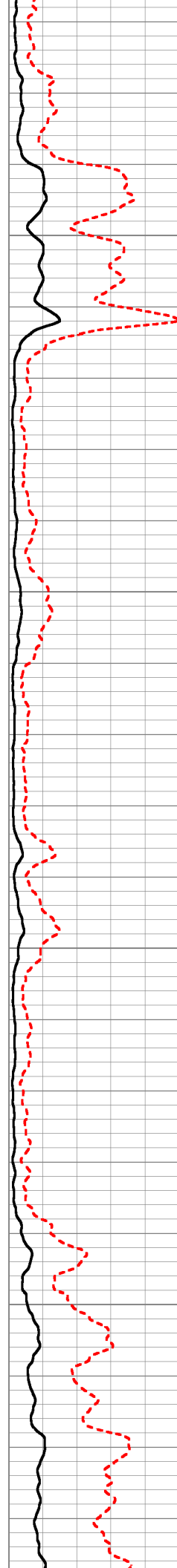


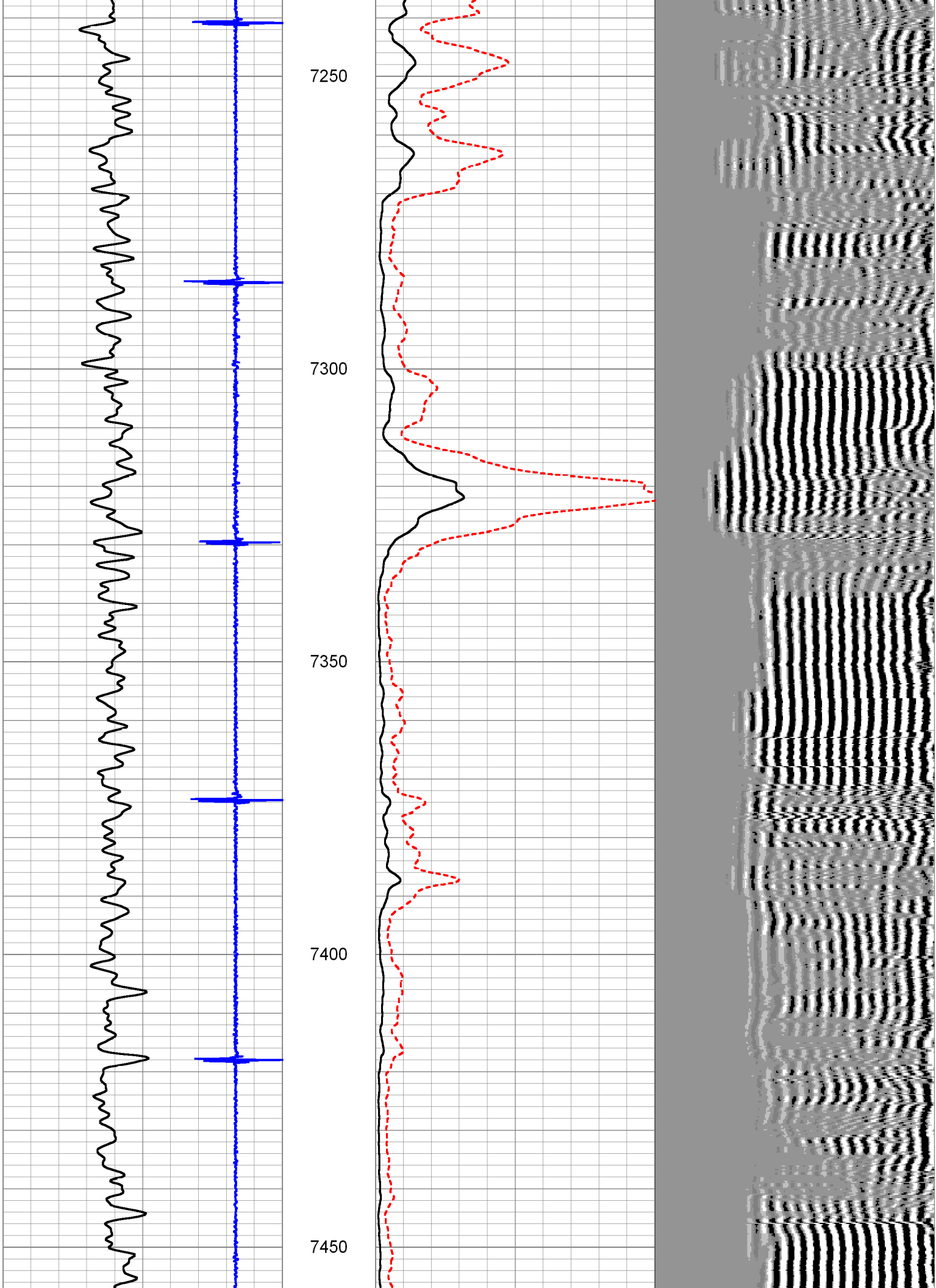
7050

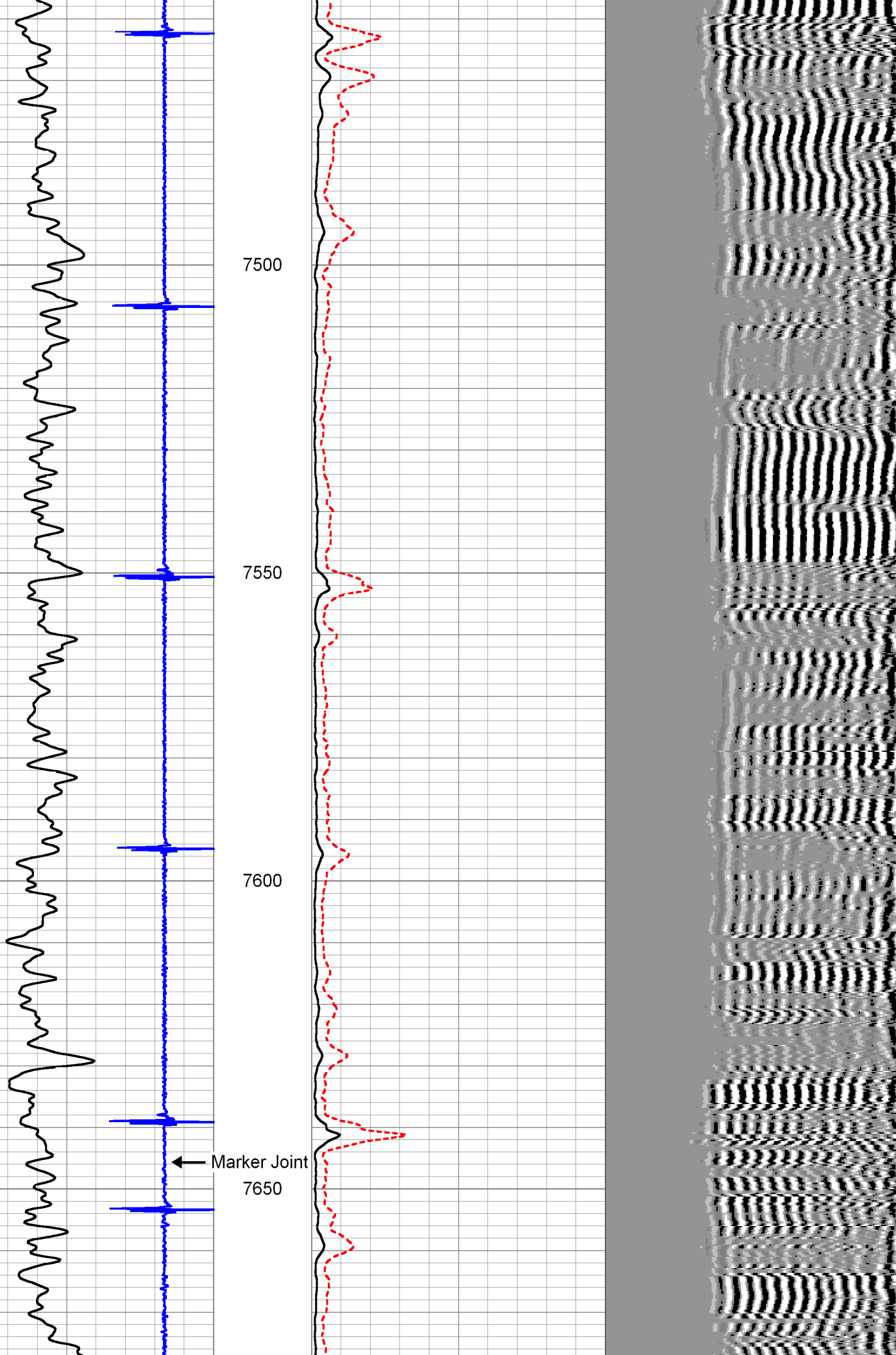
7100

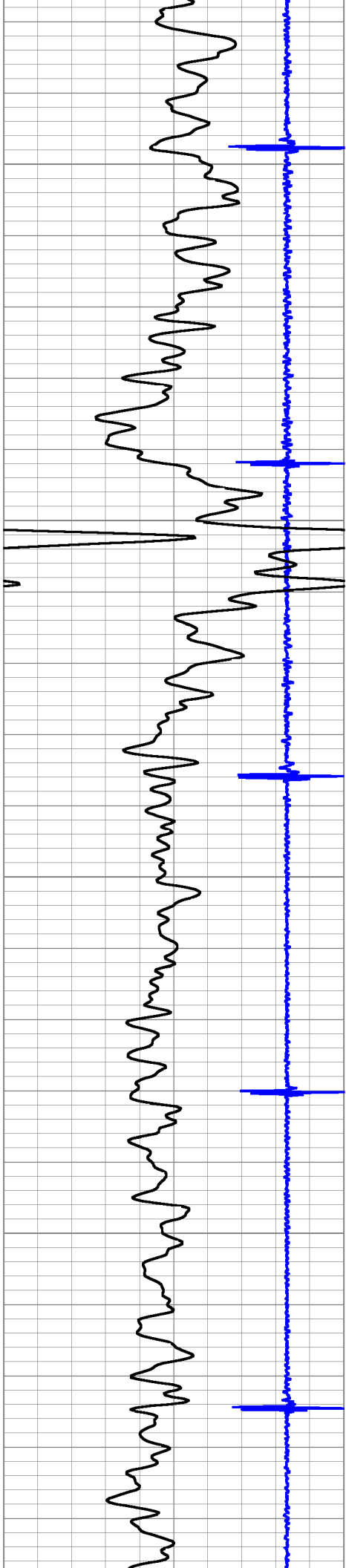
7150

7200







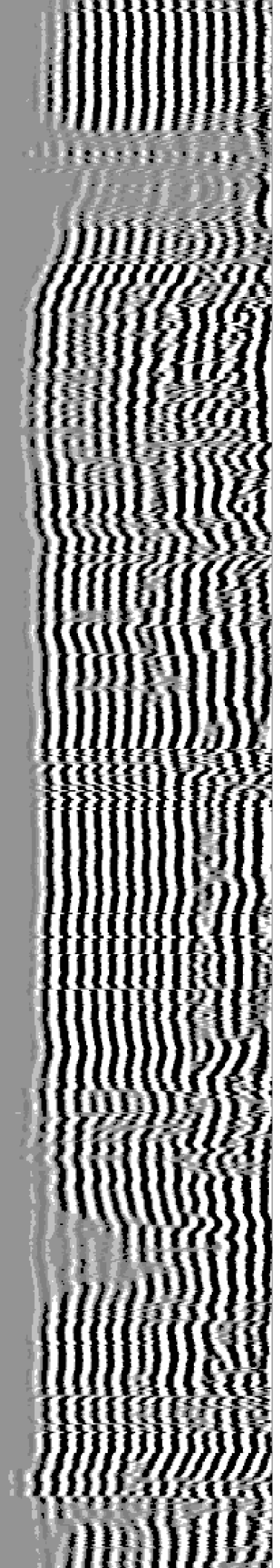
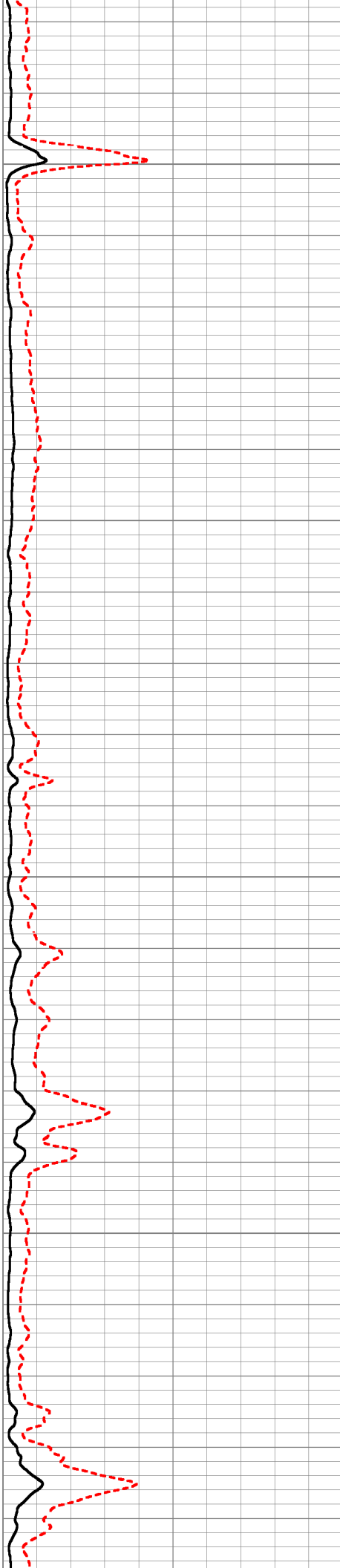


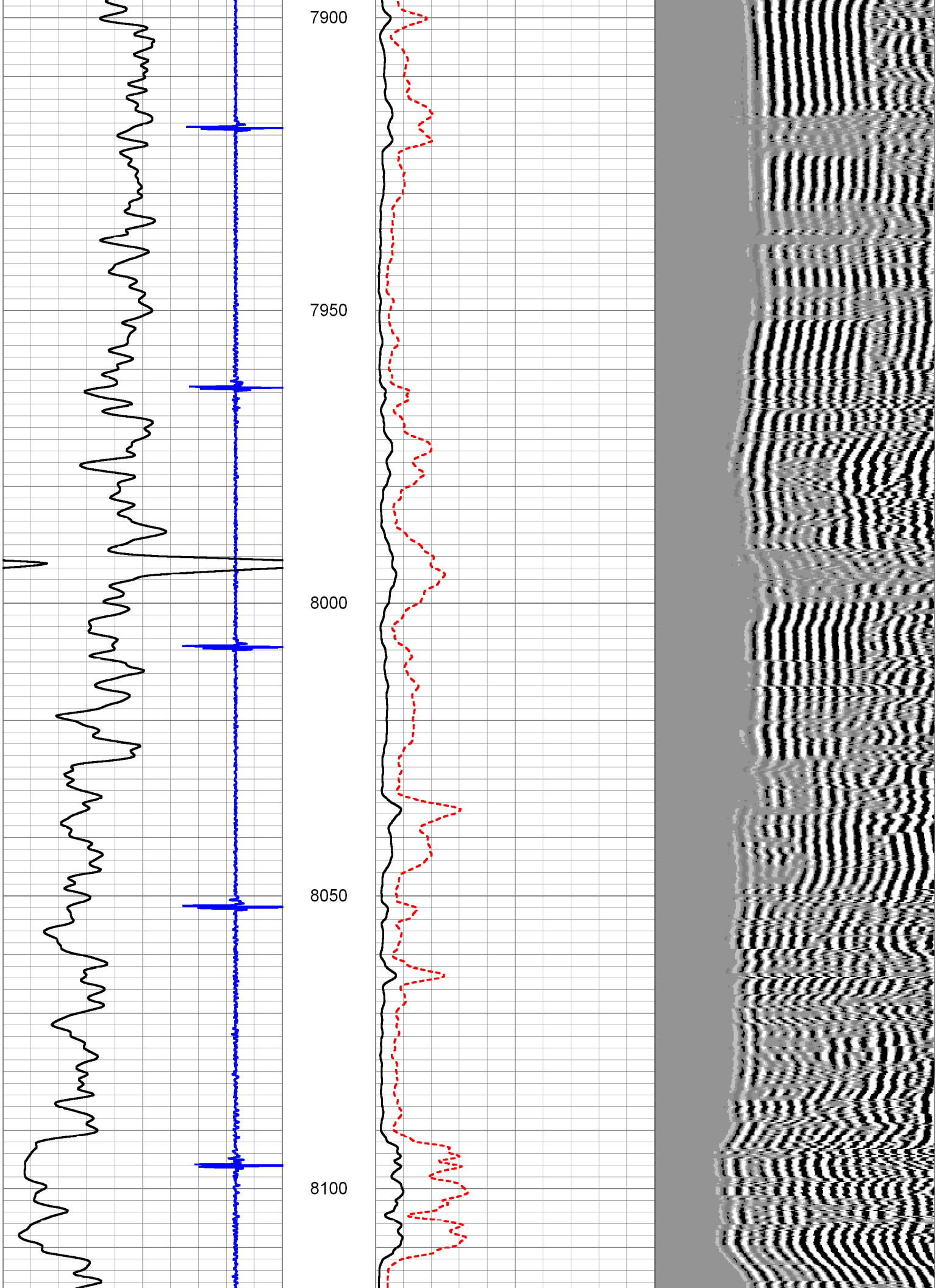
7700

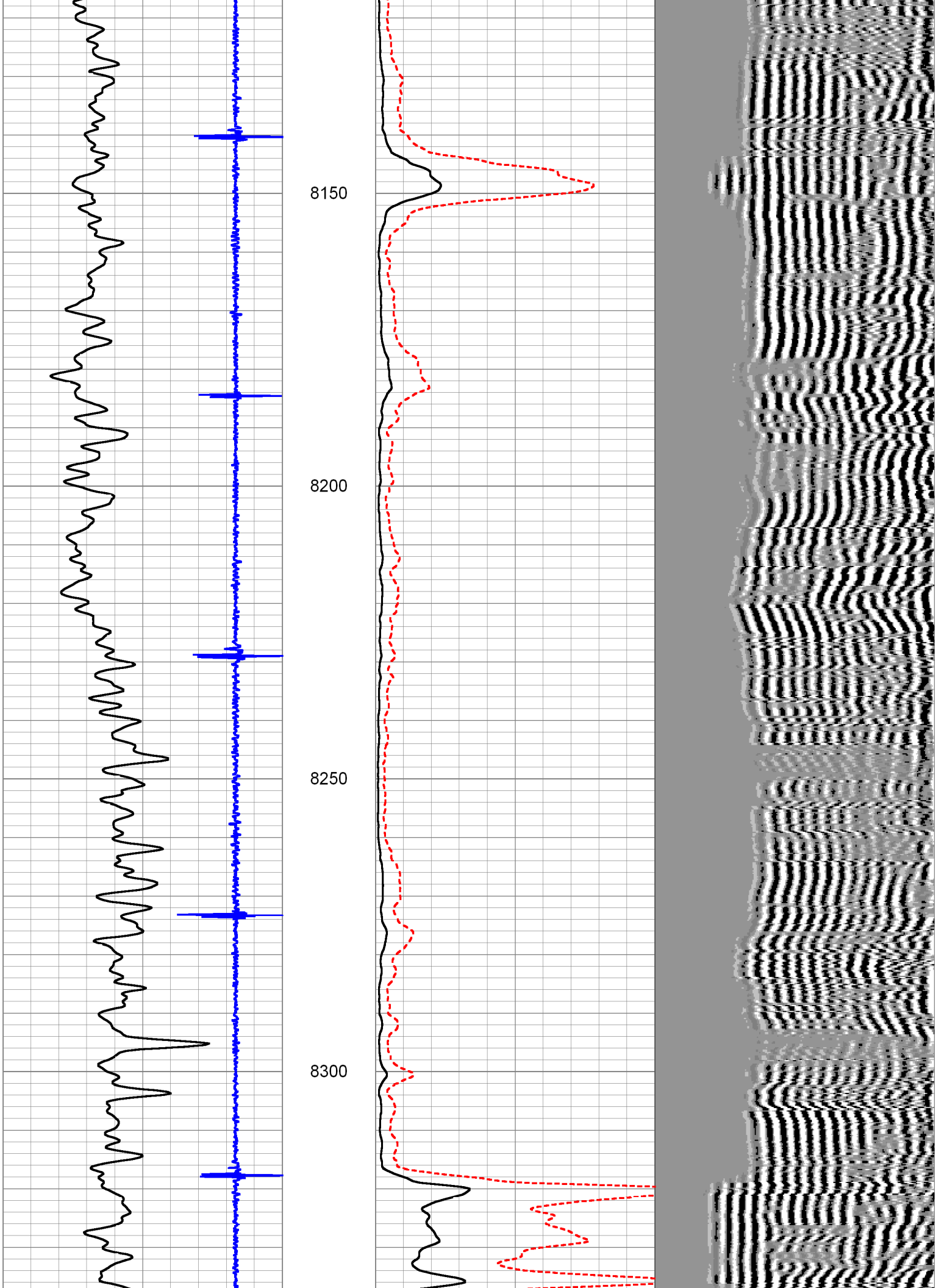
7750

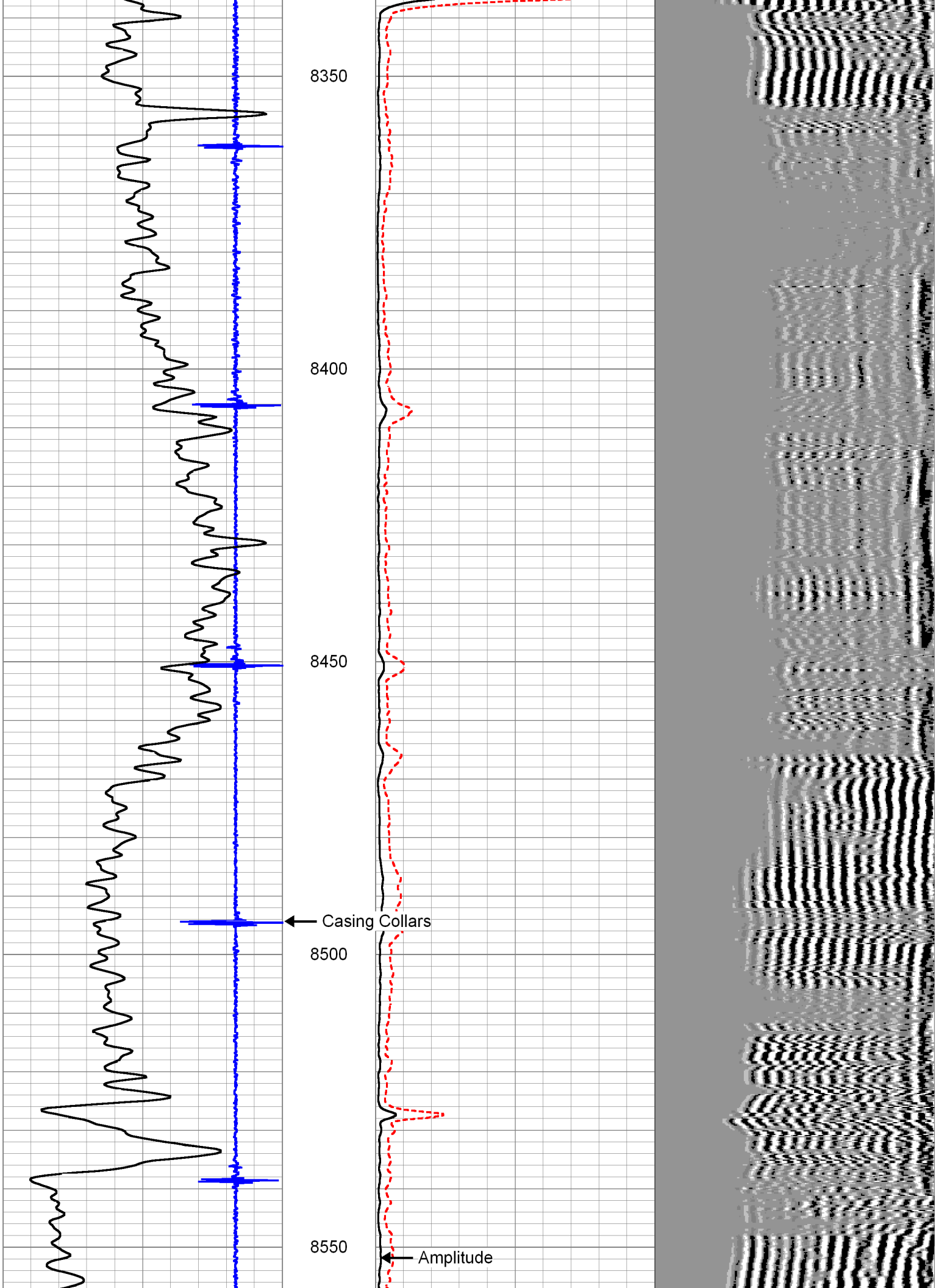
7800

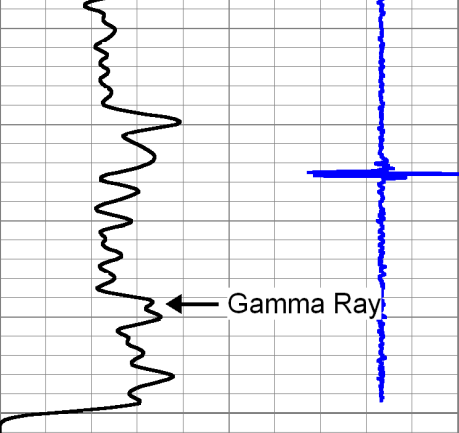
7850





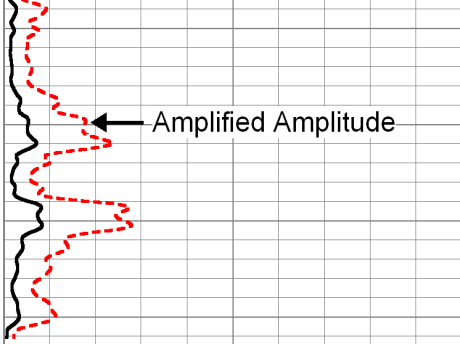




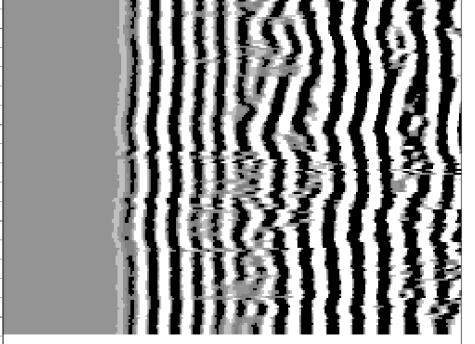


5	Collar Locator	-1
0	Gamma Ray (GAPI)	300

8600



0	Amplified Amplitude (mV)	30
0	Amplitude (mV)	100



200	Variable Density	1200
-----	------------------	------