



SUPERIOR
WELL SERVICES
Black Lick, Pa.
Mercer, Pa.
Wooster, Oh.
Cleveland, Ok.
Trinidad, Co.

DUAL INDUCTION LOG

Company	XTO Energy Inc.		
Well	Hill Ranch East 23-09		
Field	Purgatoire River		
County	Las Animas	State	Colorado
Location:	API # : 05 071 09449 00		Other Services CDL NEUTRON
SEC 23 TWP 34S RGE 67W			
Permanent Datum	Ground Level	Elevation	7734'
Log Measured From	Ground Level		
Drilling Measured From	Ground Level		
Date	4-8-08		
Run Number	One		
Depth Driller	2305'		
Depth Logger	2293'		
Bottom Logged Interval	2291'		
Top Log Interval	Surface Casing		
Casing Driller	8 5/8" @ 488'		
Casing Logger	488'		
Bit Size	7 7/8"		
Type Fluid in Hole	Water		
Density / Viscosity	///		
pH / Fluid Loss	///		
Source of Sample	///		
Rm @ Meas. Temp	///		
Rmf @ Meas. Temp	///		
Rmc @ Meas. Temp	///		
Source of Rmf / Rmc	///		
Rm @ BHT	///		
Time Circulation Stopped	6:00 A.M.		
Time Logger on Bottom	8:30 A.M.		
Maximum Recorded Temperature	110 DEG F		
Equipment Number	T697		
Location	Trinidad		
Recorded By	J. Cappellucci		
Witnessed By	Mr. Butch Cummings		

<<< Fold Here >>>

All interpretations are opinions based on inferences from electrical or other measurements and we cannot and do not guarantee the accuracy or correctness of any interpretation, and we shall not, except in the case of gross or willful negligence on our part, be liable or responsible for any loss, costs, damages, or expenses incurred or sustained by anyone resulting from any interpretation made by any of our officers, agents or employees. These interpretations are also subject to our general terms and conditions set out in our current Price Schedule.

Comments

Well Directions:
Lorencito, 2.2 miles past Compressor station take right,
at next Y stay right up hill, At top of hill take hard left,
take third left, stay left all the way to location.



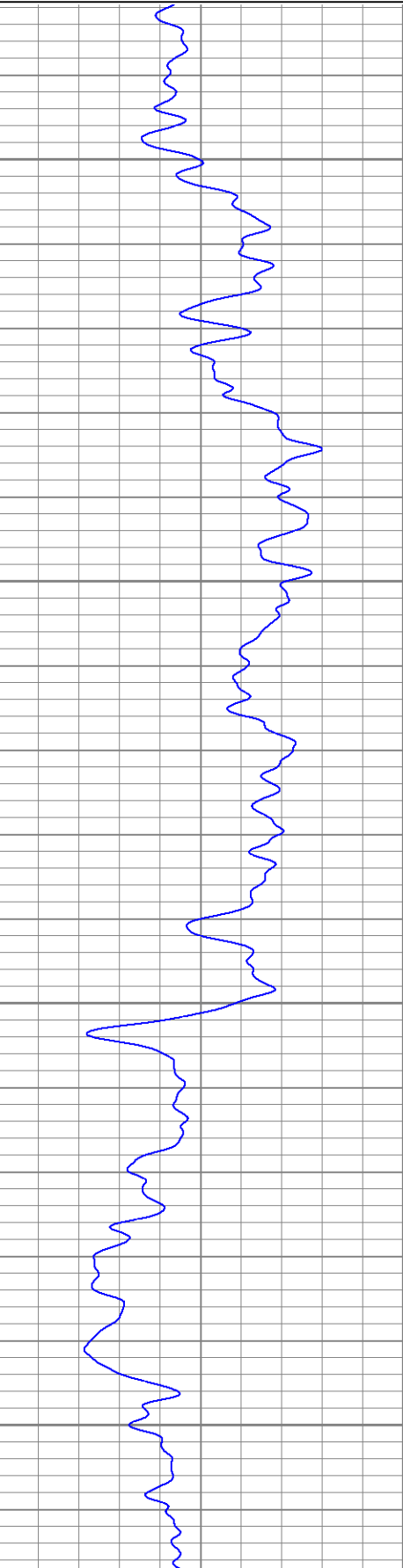
SUPERIOR
Black Lick, Pa.
Mercer, Pa.
Wooster, Oh.
Cleveland, Ok.
Trinidad, Co.

Main Pass

Database File: xtohre2309.db
Dataset Pathname: pass2.1
Presentation Format: dil
Dataset Creation: Tue Apr 08 10:10:37 2008 by Calc Open-Cased 070814
Charted by: Depth in Feet scaled 1:240

0	GR (GAPI)	200
-200	SP (mV)	0

0.2	RILM (Ohm-m)	2000
0.2	RILD (Ohm-m)	2000
0.2	RLL3 (Ohm-m)	2000

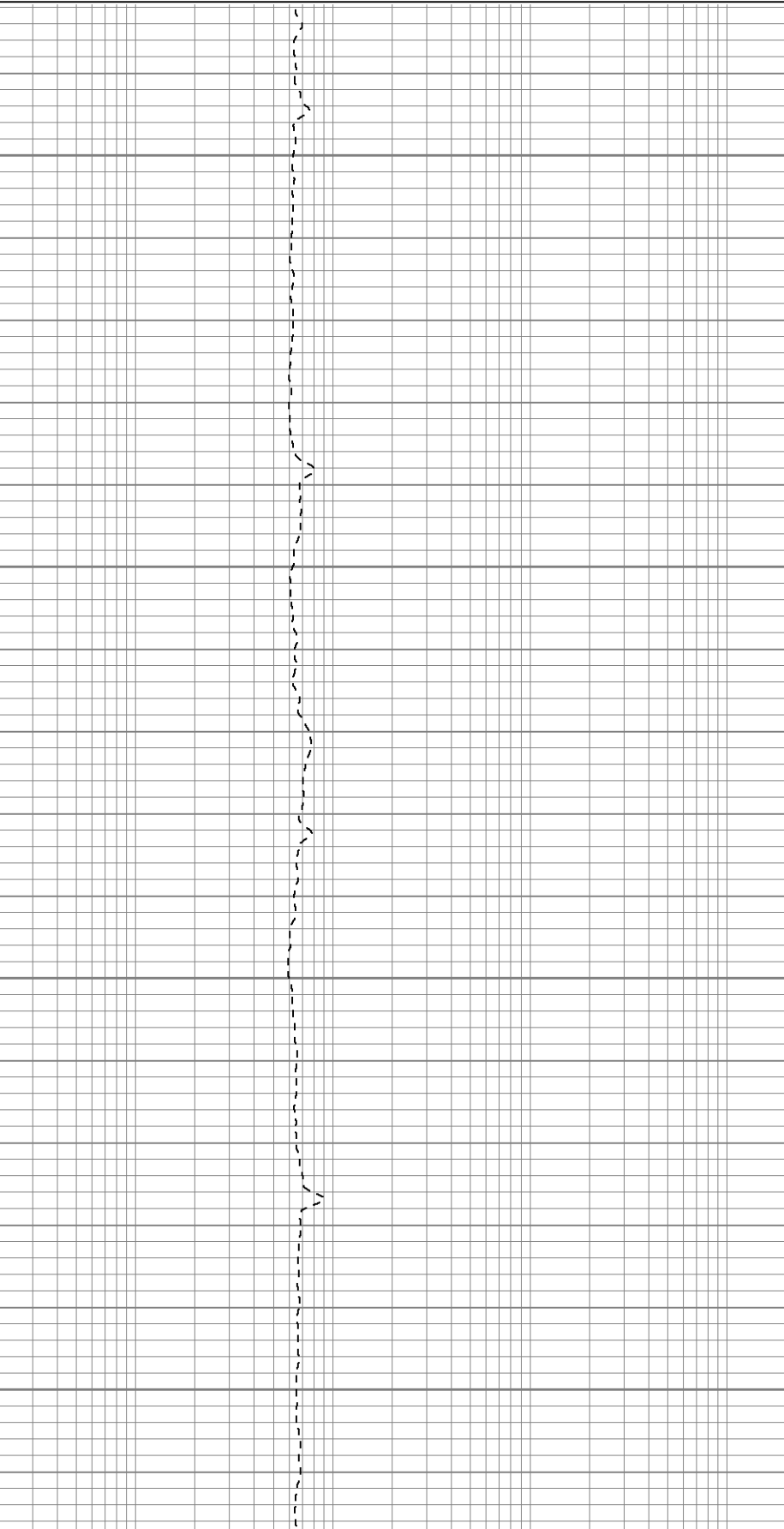


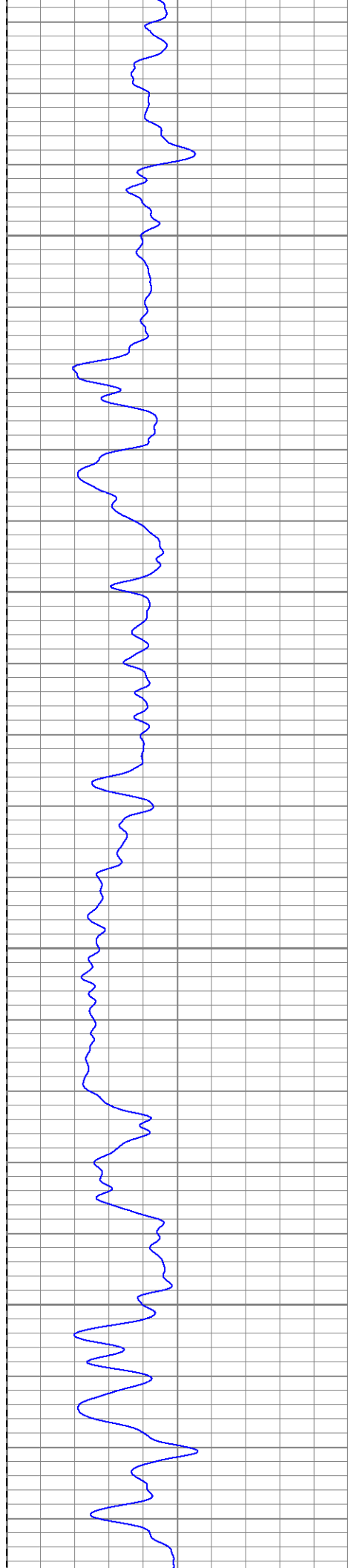
50

100

150

200



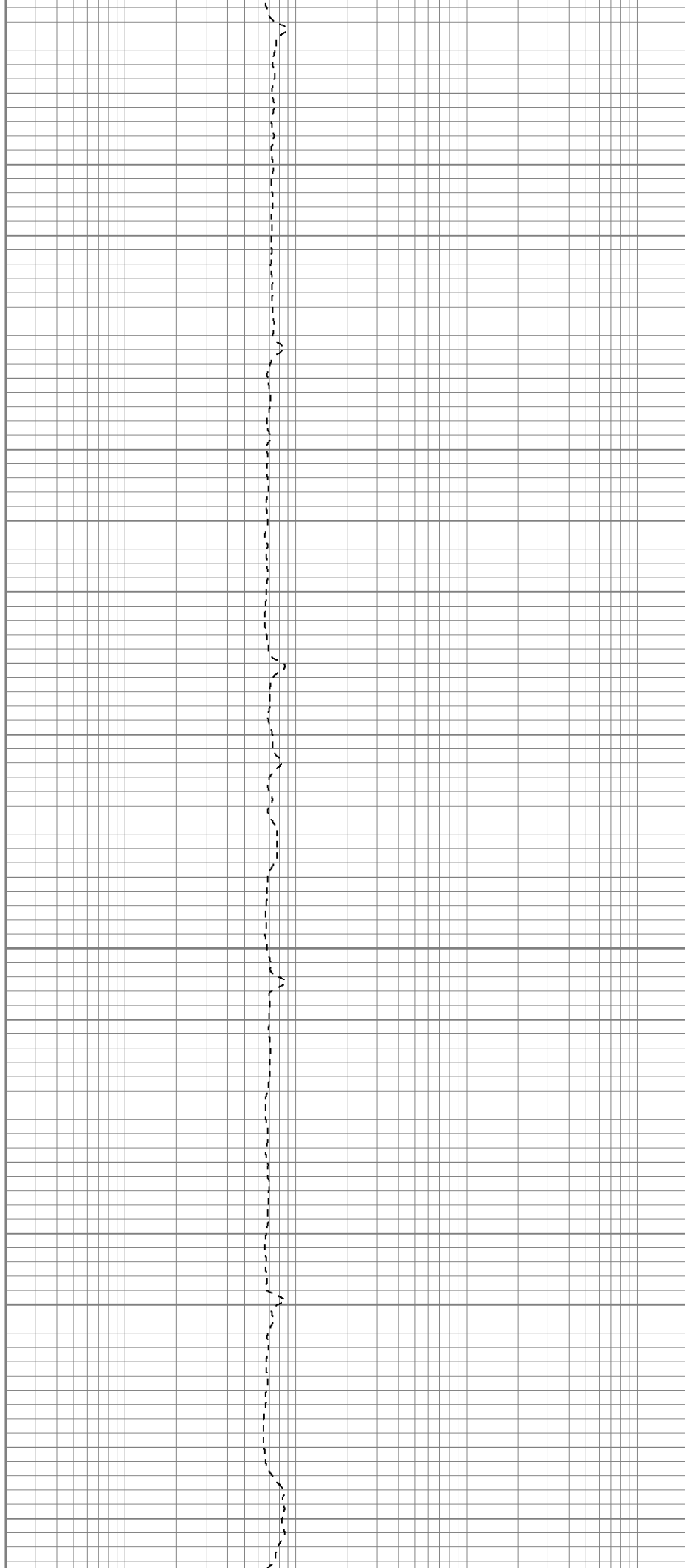


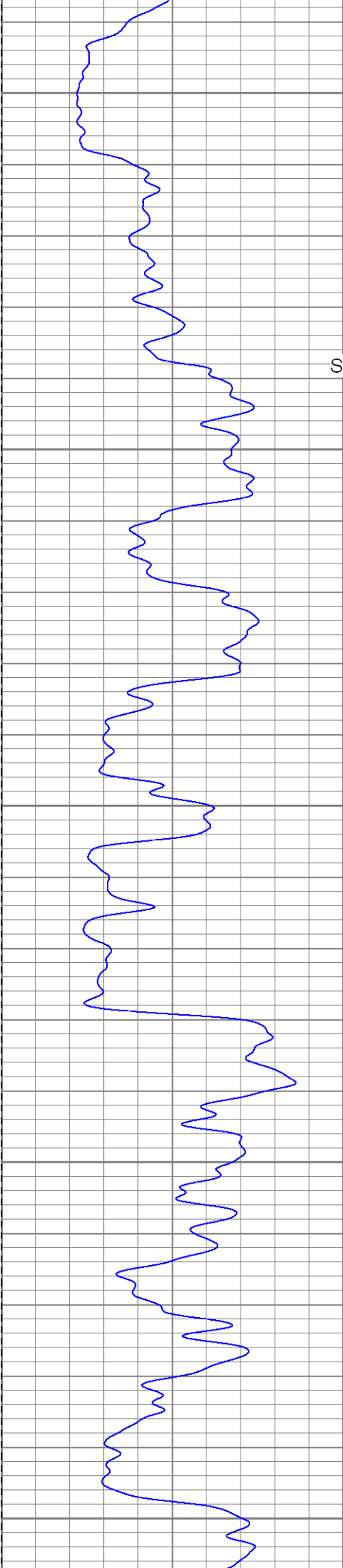
250

300

350

400





450

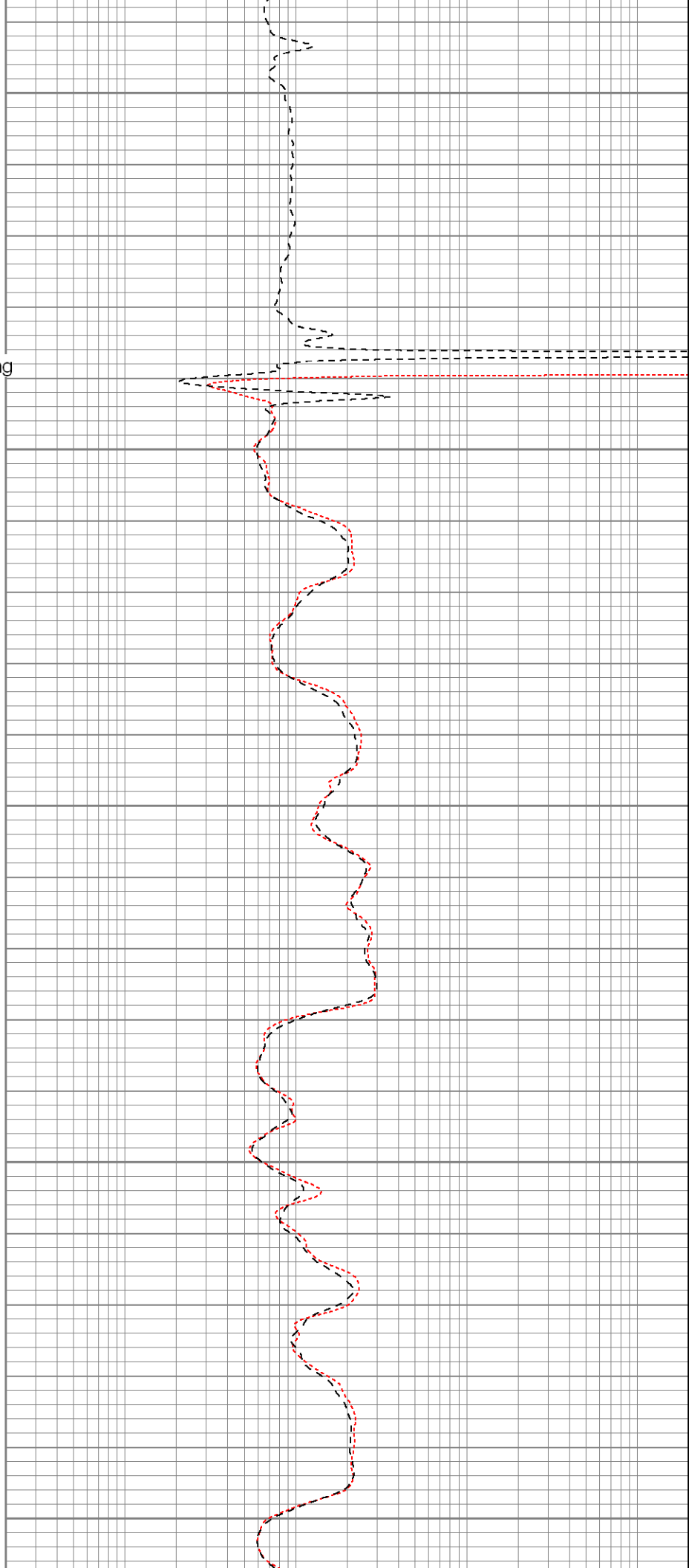
Surface Casing

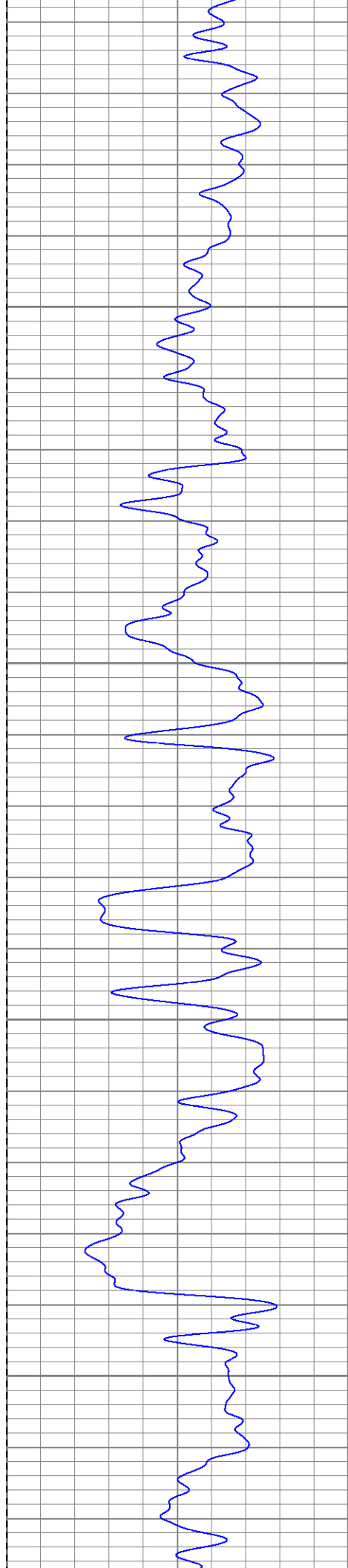
500

550

600

650



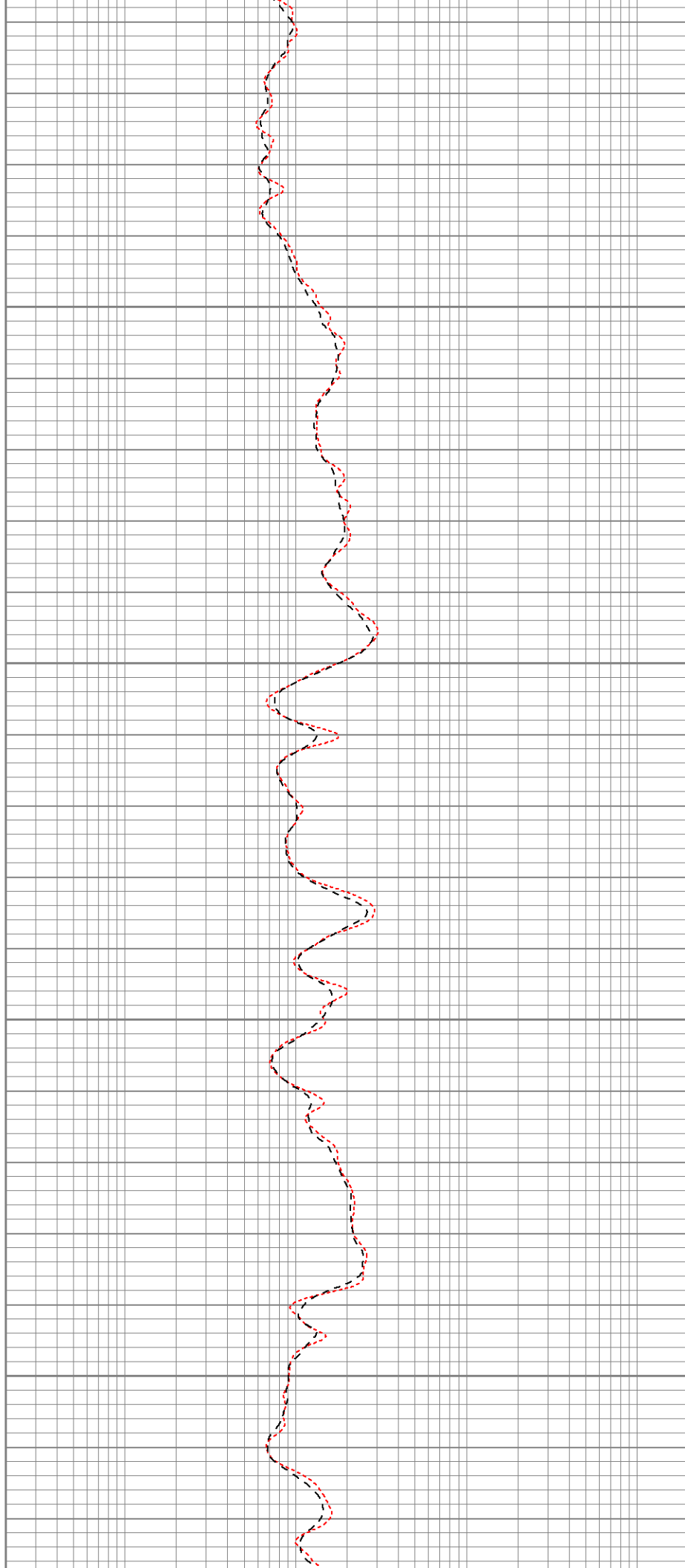


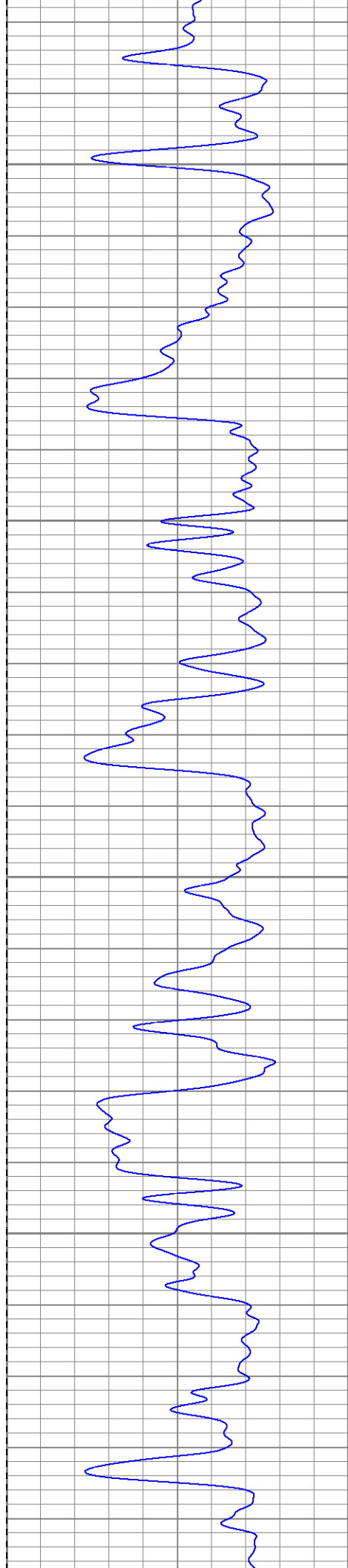
700

750

800

850



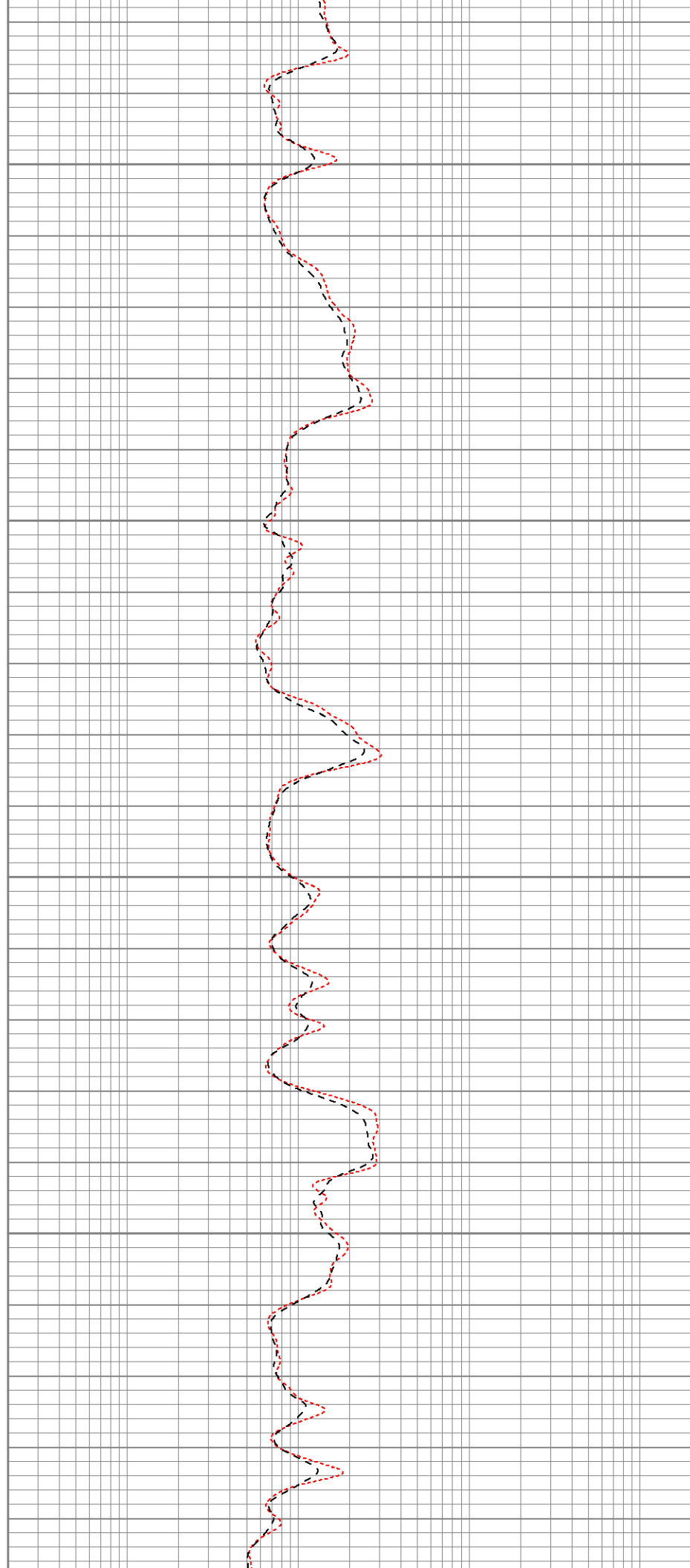


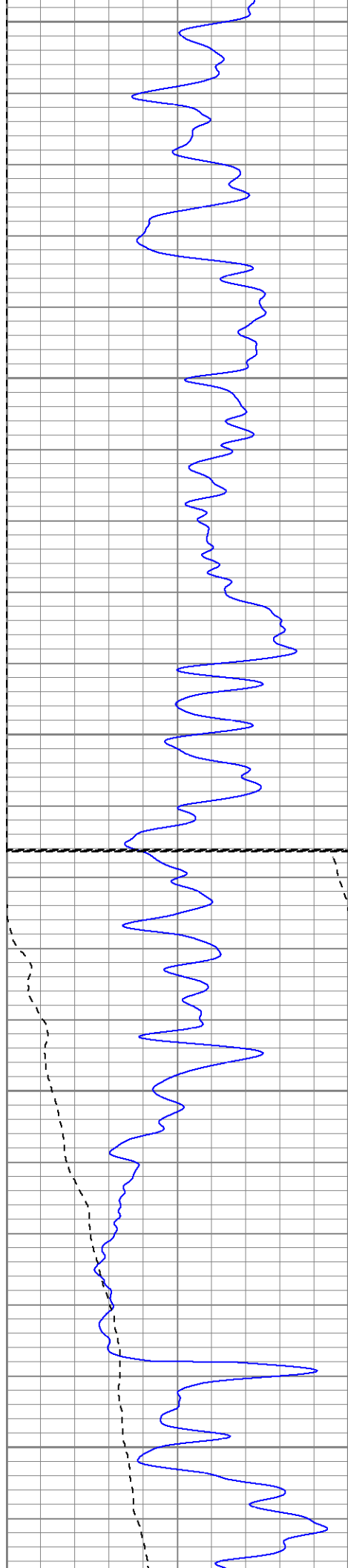
900

950

1000

1050





1100

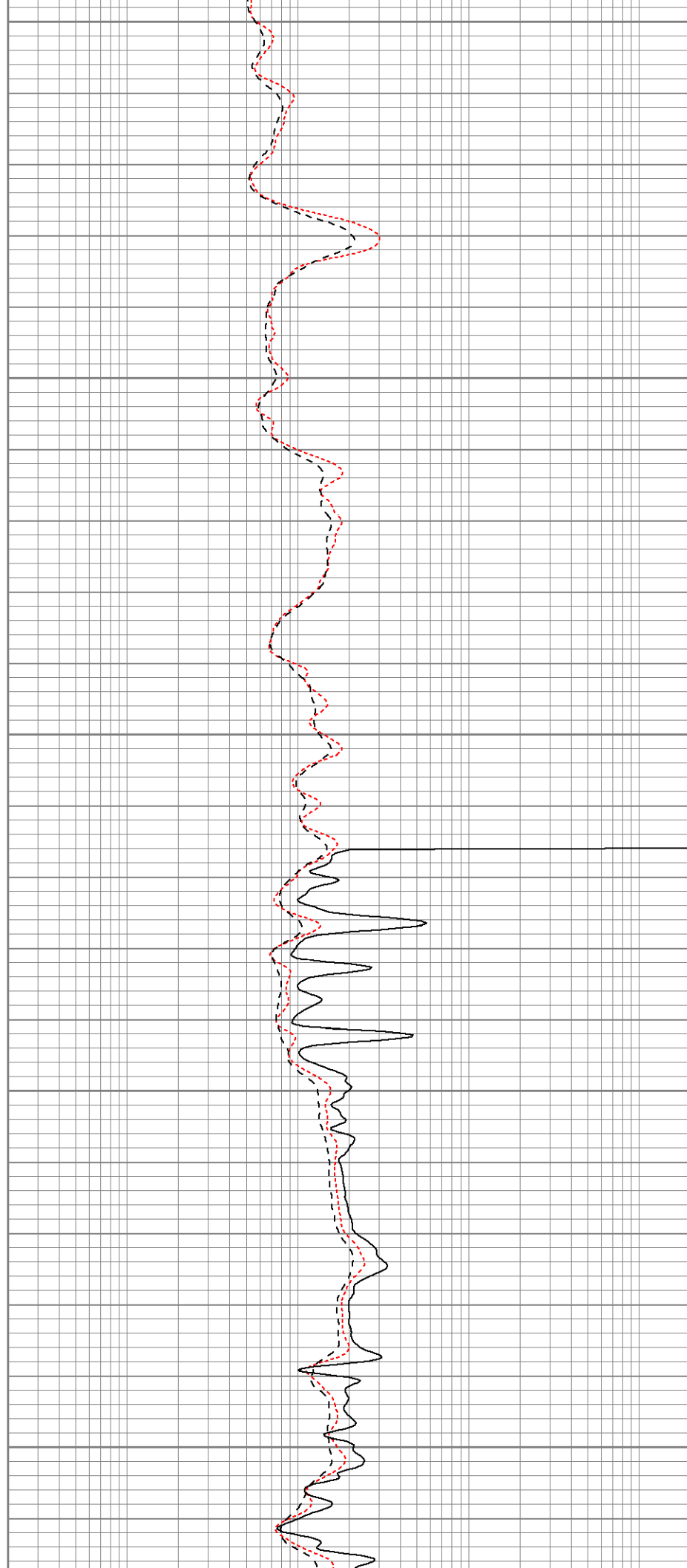
1150

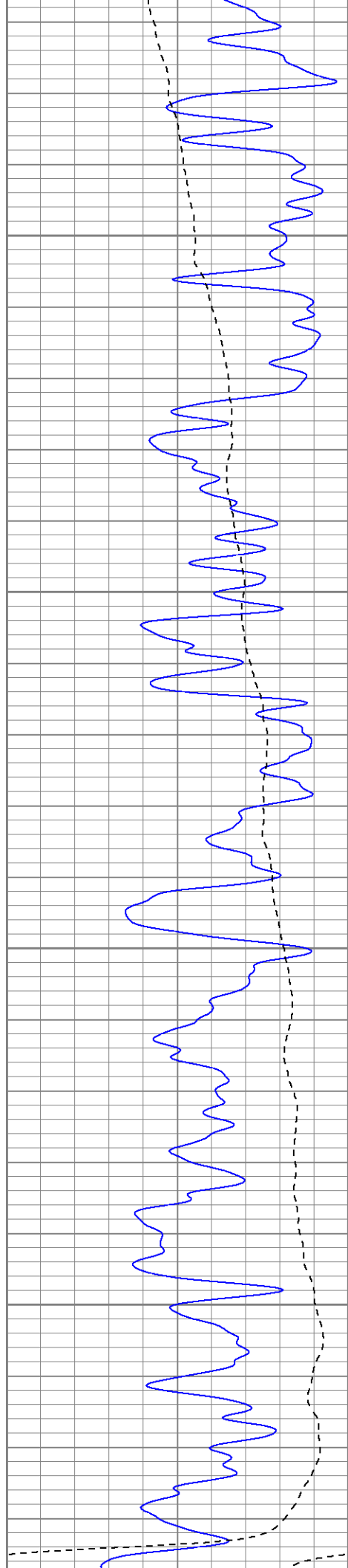
1200

Fluid Level

1250

1300



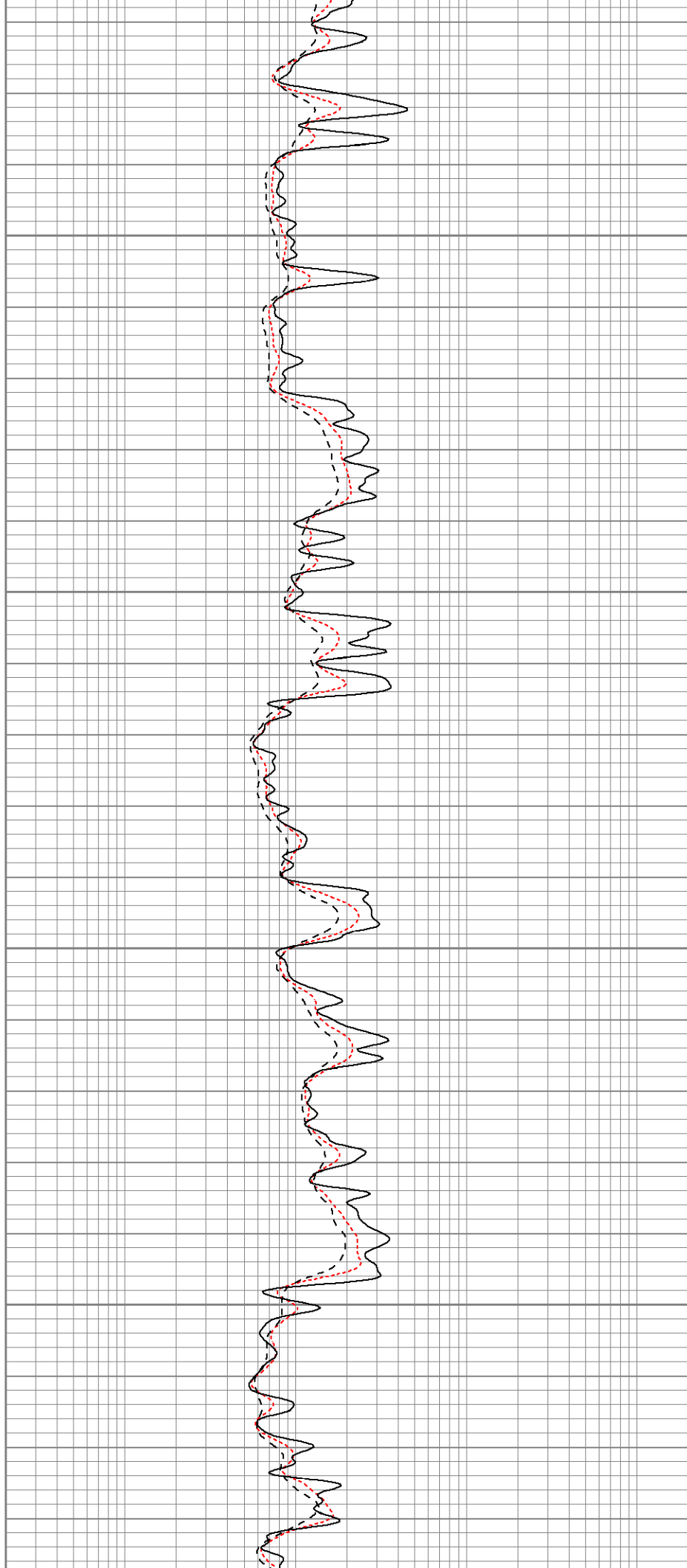


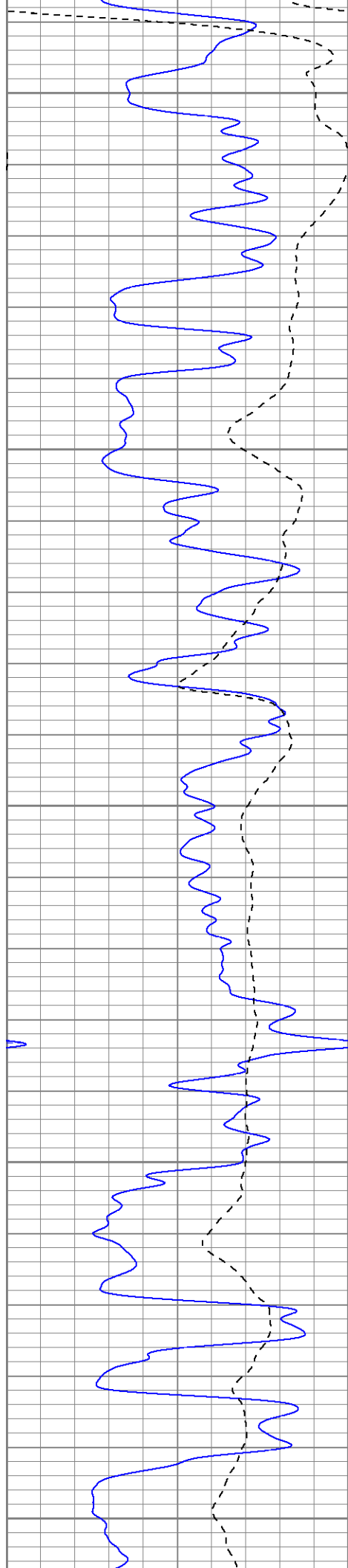
1350

1400

1450

1500





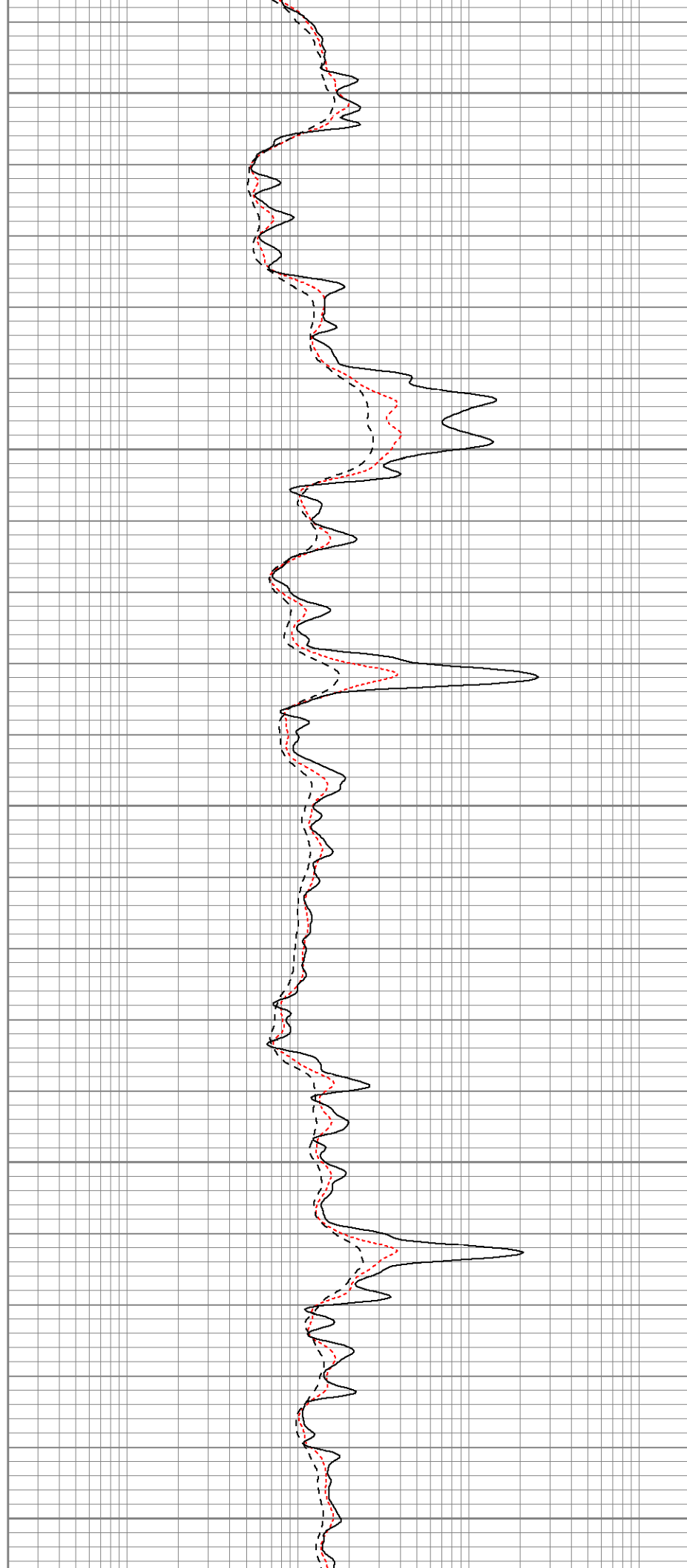
1550

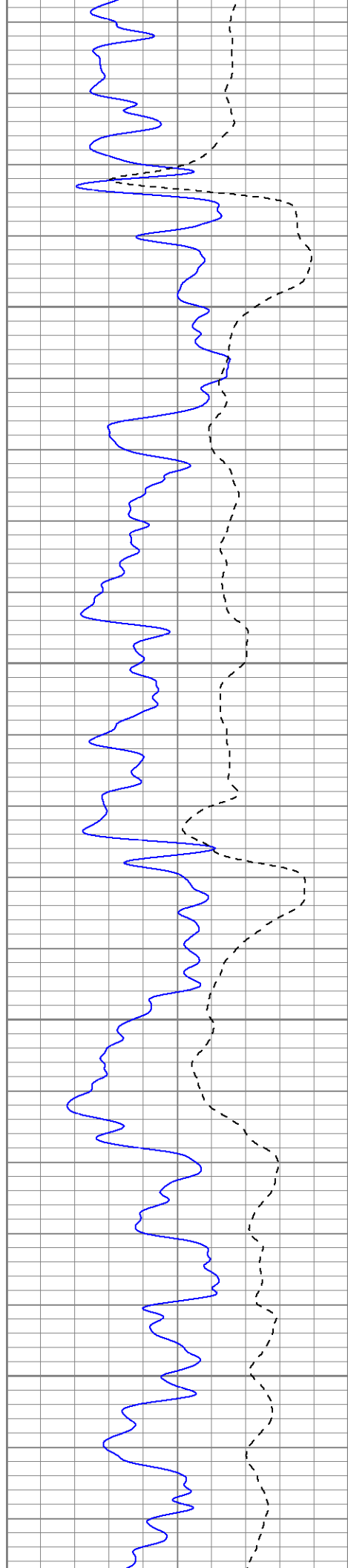
1600

1650

1700

1750



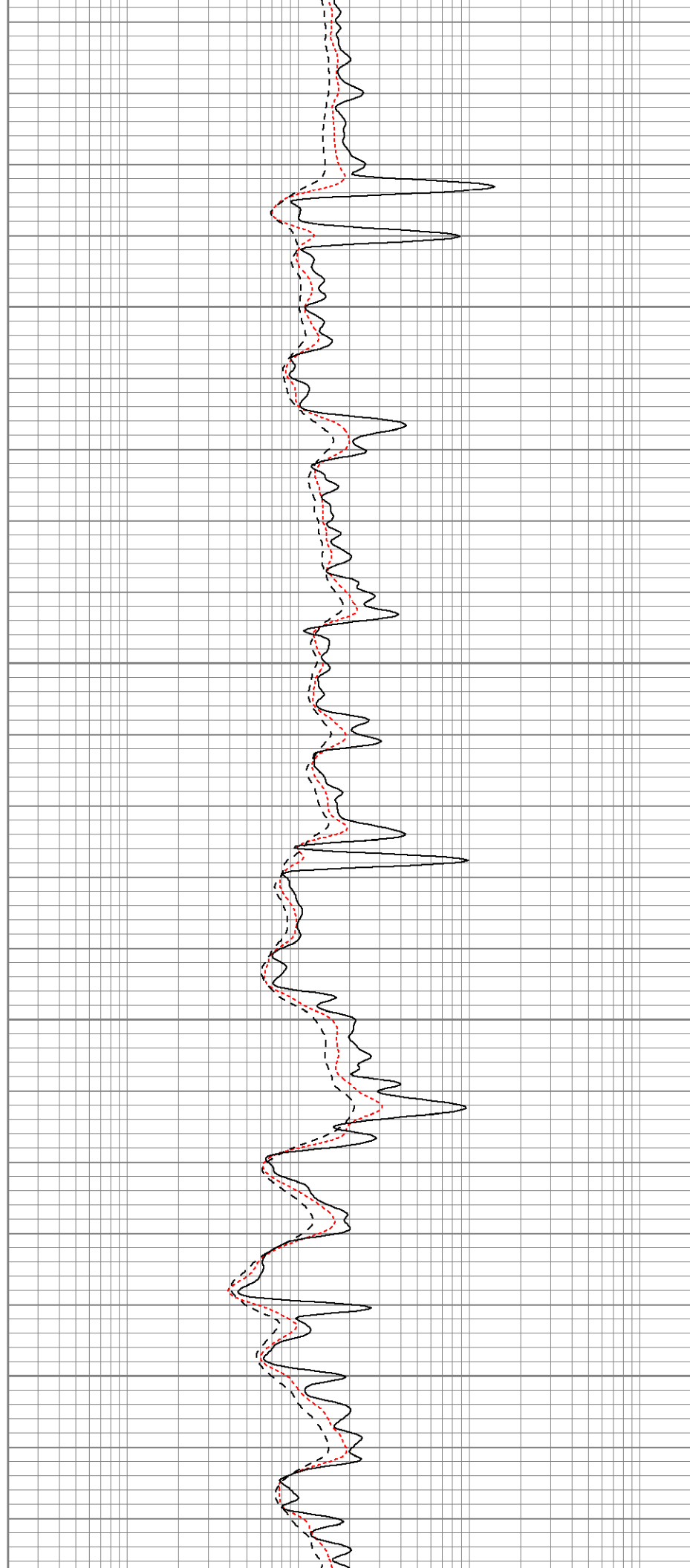


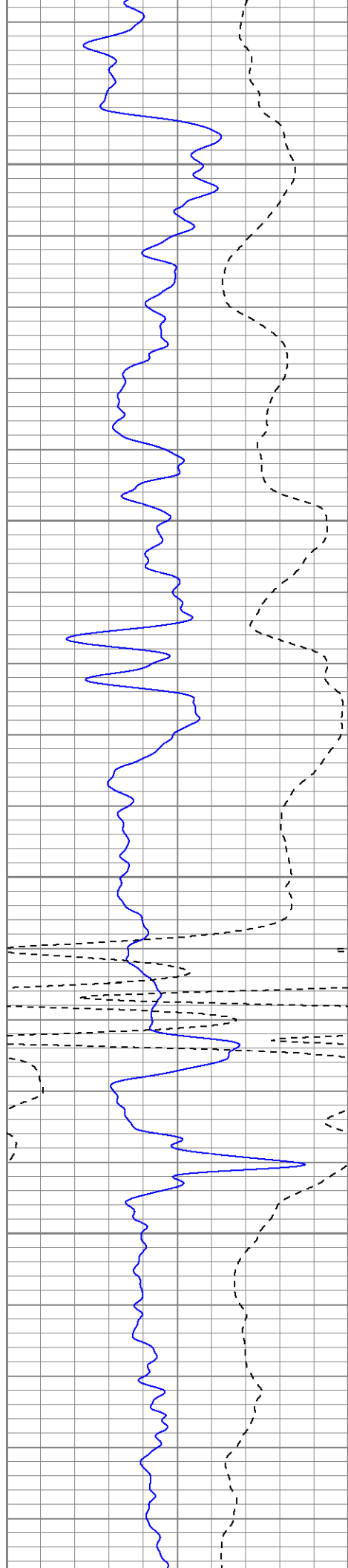
1800

1850

1900

1950



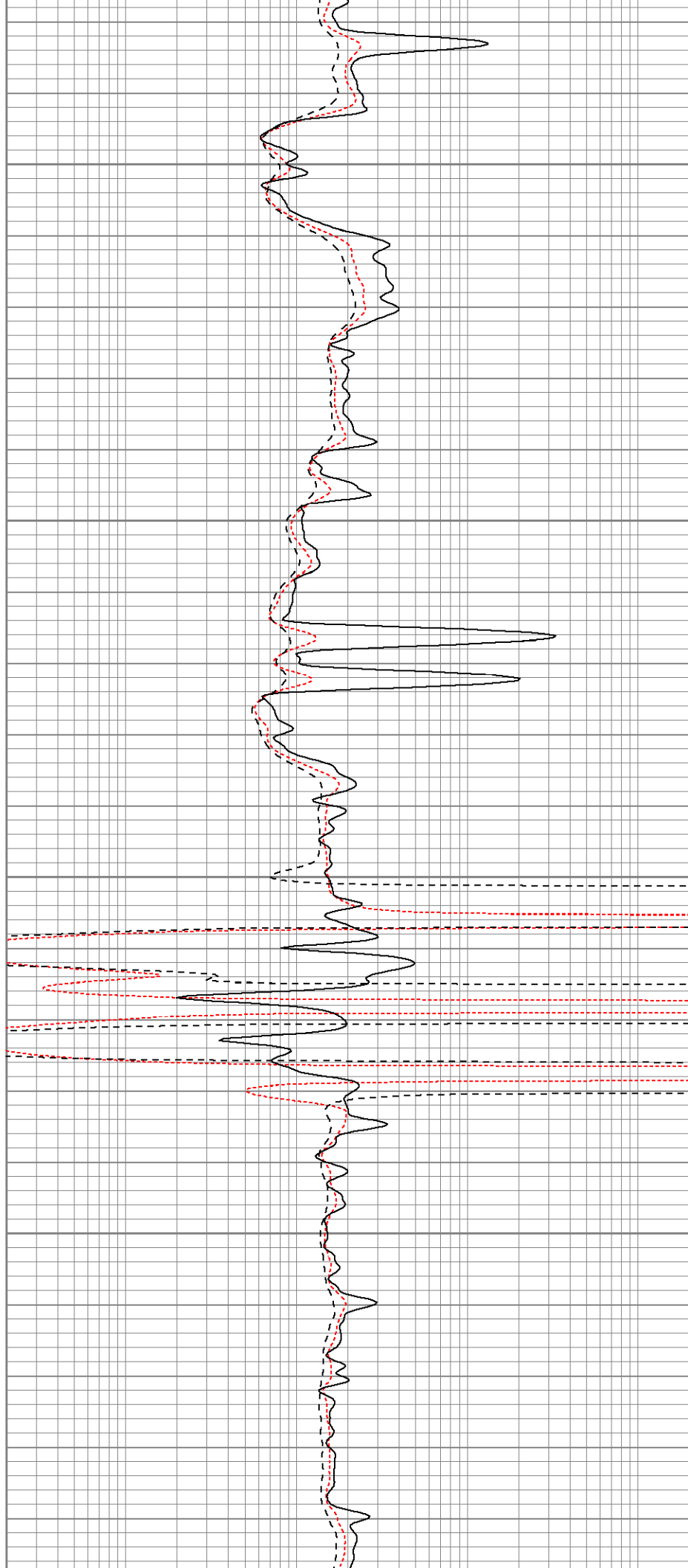


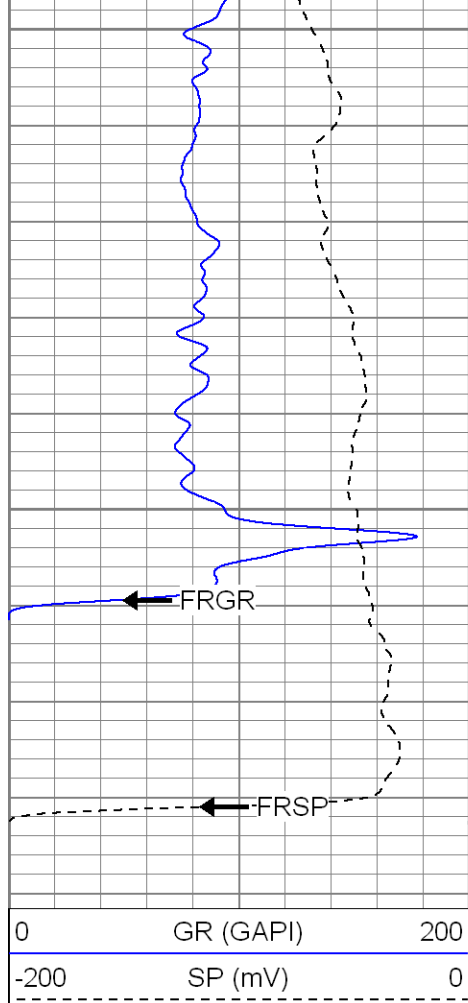
2000

2050

2100

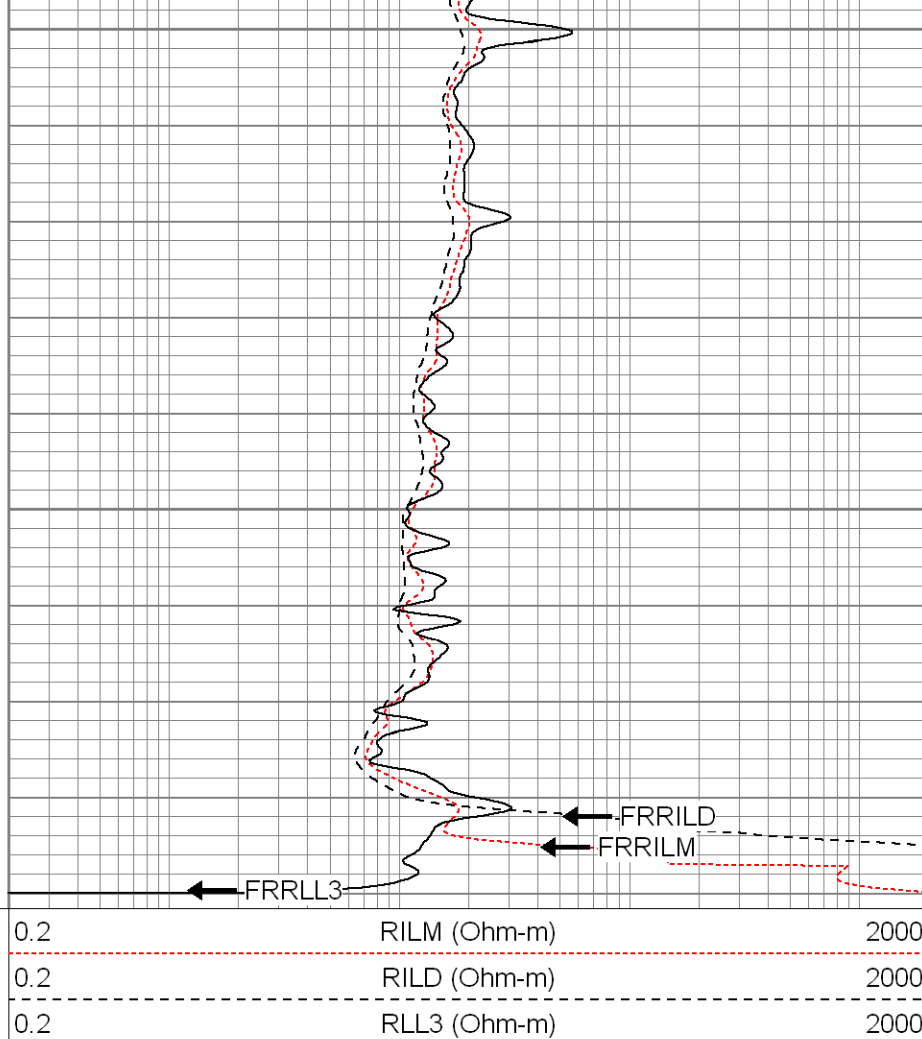
2150





2200

2250



SUPERIOR

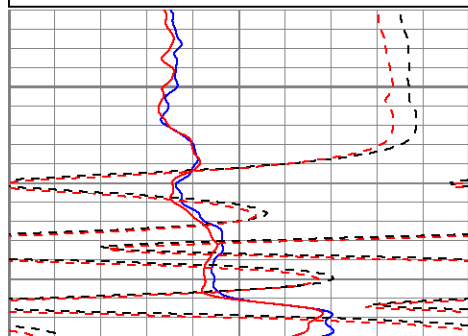
Black Lick, Pa.
Mercer, Pa.
Wooster, Oh.
Cleveland, Ok.
Trinidad, Co.

Repeat Pass

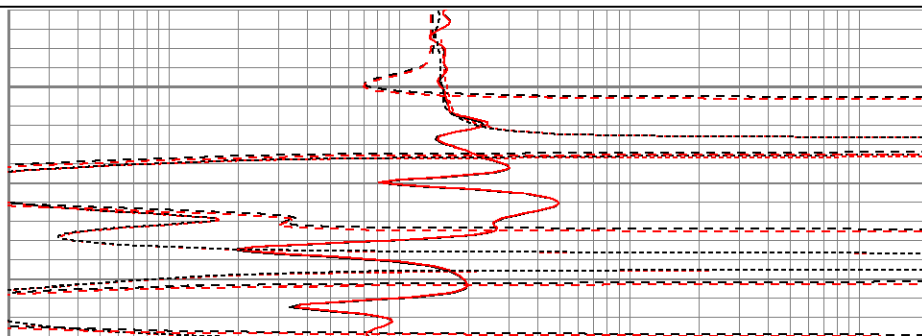
Database File: xtohre2309.db
Dataset Pathname: pass1.1
Presentation Format: dil
Dataset Creation: Tue Apr 08 09:53:49 2008 by Calc Open-Cased 070814
Charted by: Depth in Feet scaled 1:240

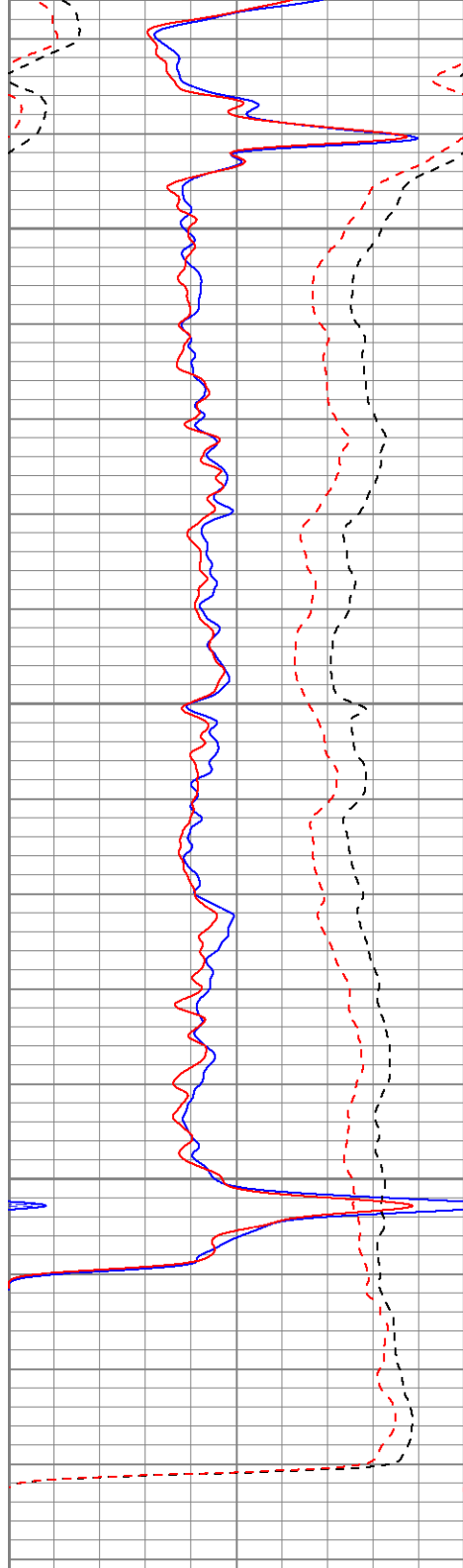
0	GR (GAPI)	200
-200	SP (mV)	0
-200	SP-repeat (mV)	0
0	GR-repeat (GAPI)	200

0.2	RILM (Ohm-m)	2000
0.2	RILD (Ohm-m)	2000
0.2	RLL3 (Ohm-m)	2000
0.2	RLL3-repeat (Ohm-m)	2000
0.2	RILM-repeat (Ohm-m)	2000
0.2	RILD-repeat (Ohm-m)	2000



2100



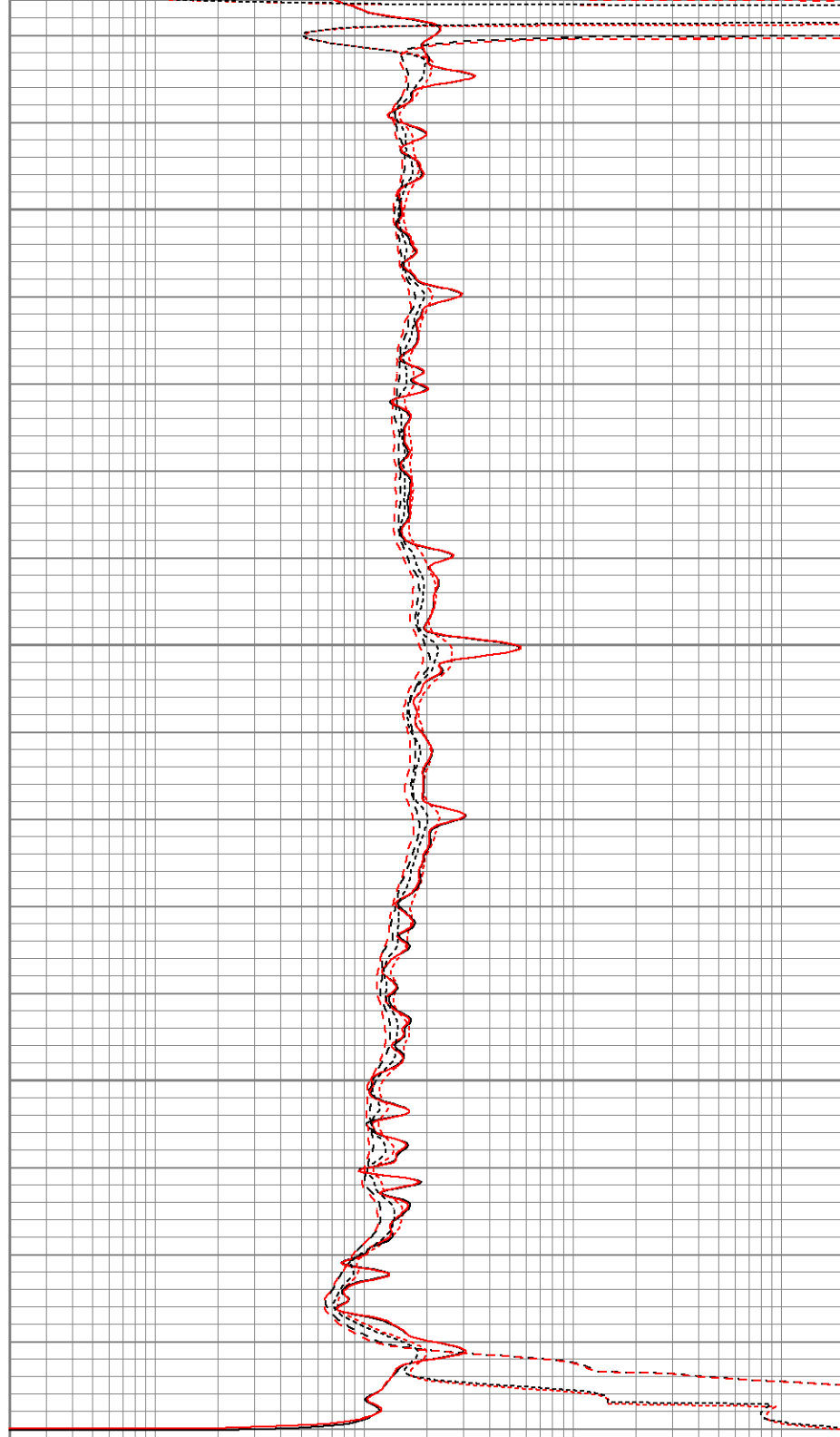


2150

2200

2250

0	GR (GAPI)	200
-200	SP (mV)	0
-200	SP-repeat (mV)	0
0	GR-repeat (GAPI)	200



0.2	RILM (Ohm-m)	2000
0.2	RILD (Ohm-m)	2000
0.2	RLL3 (Ohm-m)	2000
0.2	RLL3-repeat (Ohm-m)	2000
0.2	RILM-repeat (Ohm-m)	2000
0.2	RILD-repeat (Ohm-m)	2000

Calibration Report

Database File: xtohre2309.db
 Dataset Pathname: pass1
 Dataset Creation: Tue Apr 08 08:31:21 2008 by Log Open-Cased 070814

Dual Induction Calibration Report

Serial-Model:	5375-G
Surface Cal Performed:	Tue Apr 01 11:00:37 2008
Downhole Cal Performed:	Tue Apr 01 11:01:24 2008

Surface Calibration

Readings				References			Results	
Loop:	Air	Loop		Air	Loop		m	b
Deep	0.001	0.620	V	0.000	500.000	mmho-m	807.237	-0.611
Medium	0.003	0.742	V	0.000	550.000	mmho-m	743.848	-2.179
Internal:	Zero	Cal		Zero	Cal		m	b
Deep	0.001	0.620	V	0.000	500.000	mmho-m	807.141	-0.502
Medium	0.003	0.742	V	0.000	550.000	mmho-m	743.959	-2.189

Downhole Calibration

Readings				References			Results	
Internal:	Zero	Cal		Zero	Cal		m	b
Deep	-0.493	500.241	mmho-m	-0.108	499.951	mmho-m	0.999	0.384
Medium	0.182	550.341	mmho-m	0.009	549.927	mmho-m	1.000	-0.172
Shallow	2.506	0.008	V	500.000	2.000	Ohm-m	124.000	-3.000

Temperature Calibration Report

Serial Number:	2542T
Tool Model:	CDLP
Performed:	Thu Jan 10 11:25:25 2008

	Reference	Reading
Low Reference:	55.00 degF	3.11 V
High Reference:	160.00 degF	5.35 V
Gain:	46.88	
Offset:	-90.78	
Delta Spacing	1	

Compensated Density Calibration Report

Serial-Model:	2542-T2
Source / Verifier:	/
Master Calibration Performed:	Fri Apr 04 08:43:29 2008

Master Calibration

	Density		Far Detector	Near Detector	
Magnesium	1.710	g/cc	725.64	339.44	cps
Aluminum	2.590	g/cc	162.65	232.88	cps
Spine Angle = 75.86			Density/Spine Ratio = 0.571		
	Size		Reading		
Small Ring	8.00	in	1.33	V	
Large Ring	14.00	in	2.67	V	

Gamma Ray Calibration Report

Serial Number: 2001
Tool Model: OH
Performed: Fri Apr 04 09:53:13 2008

Calibrator Value: 1.0 GAPI

Background Reading: 0.0 cps
Calibrator Reading: 1.0 cps

Sensitivity: 0.2500 GAPI/cps


Neutron Calibration Report

Serial Number: 5108
Tool Model: PROBE
Performed: Fri Dec 01 08:04:46 2006

Calibrator Value: 1 NAPI

Calibrator Reading: 1 cps

Sensitivity: 1 NAPI/cps

Sensor	Offset (ft)	Schematic	Description	Len (ft)	OD (in)	Wt (lb)
NEU	38.42		None	0.75	1.50	5.00
			NEU-PROBE (5108) Probe Epithermal	4.92	3.63	85.00
GR	31.90		GR-OH (2001) 2001	3.56	3.25	40.00
			CDL-T2 (2542) Gearhart	9.25	4.00	201.00
LSD	24.31		TEMP-CDLP (2542T) Probe Density/Temp	0.01	10.00	1.00
DCAL	23.98					
SSD	23.73					
TEMP	22.55					
CILD	10.60		DIL-G (5375) Gearhart	21.47	4.00	345.00
SP	10.60					
CILM	6.89					
RLL3	1.70					

Dataset:	X:\mrc2000\ab: field\well\run\pass 1
Total Length:	39.96 ft
Total Weight:	677.00 lb
O.D.	10.00 in