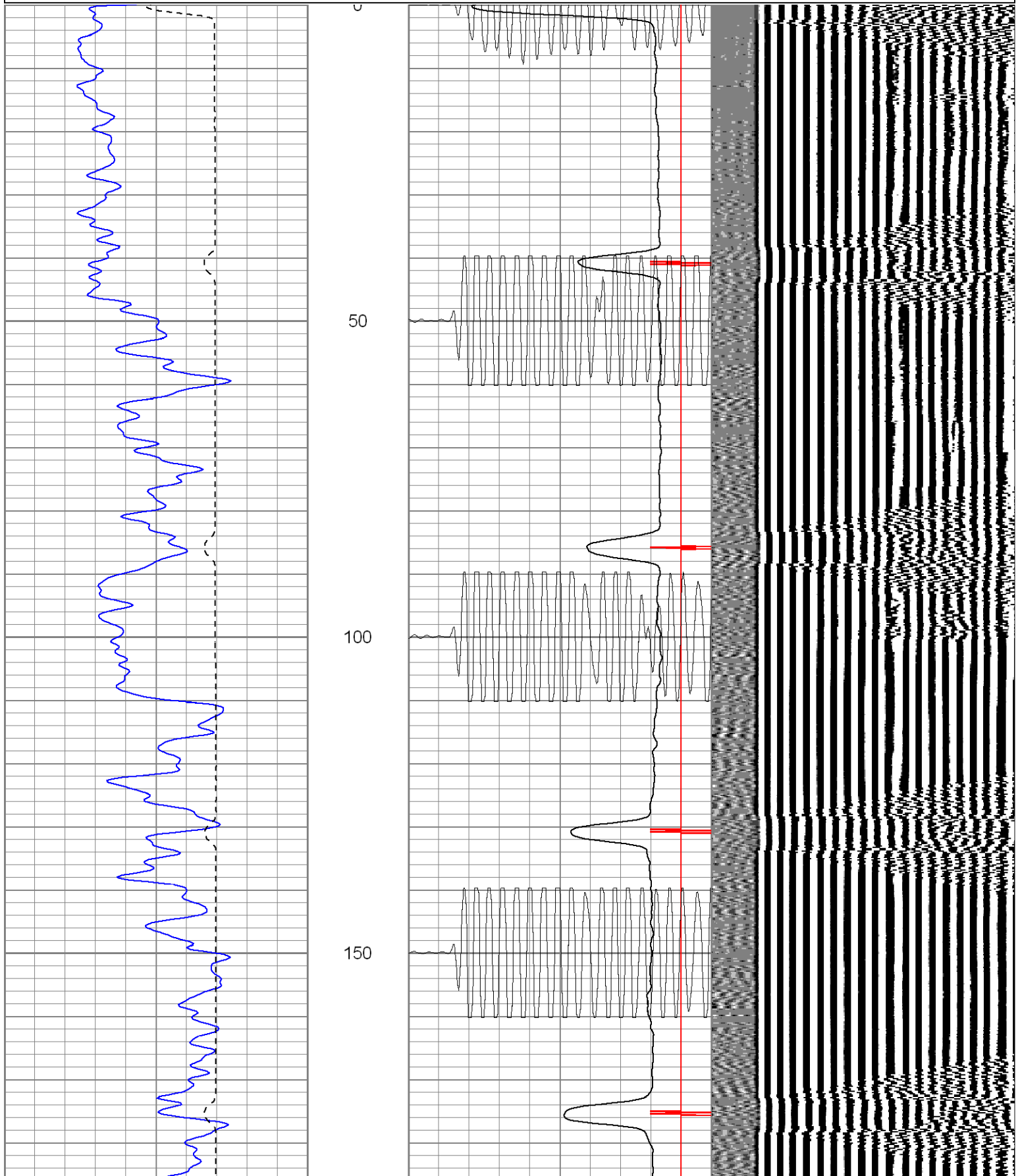
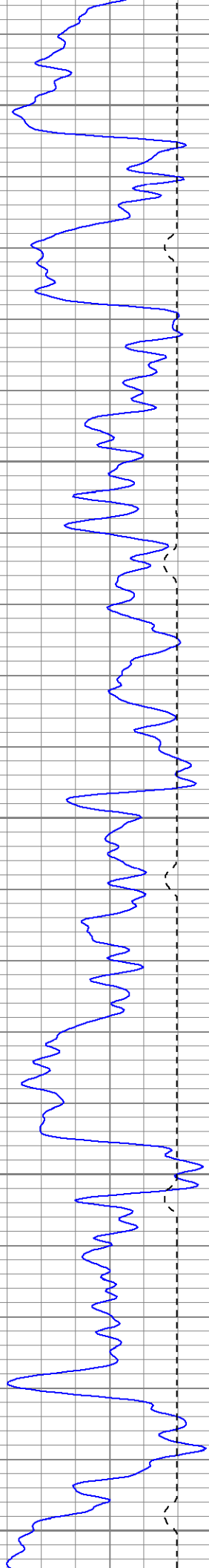


Database File: ac5-13b22808.db
 Dataset Pathname: pass5
 Presentation Format: cblrt
 Dataset Creation: Thu Feb 28 16:45:23 2008
 Charted by: Depth in Feet scaled 1:240

0	GR (GAPI)	200	0	AMP3 (mV)	100	200	CBL5	1200
400	TT3 (usec)	200	18	CCL	-2			
			200	CBL5	1200			





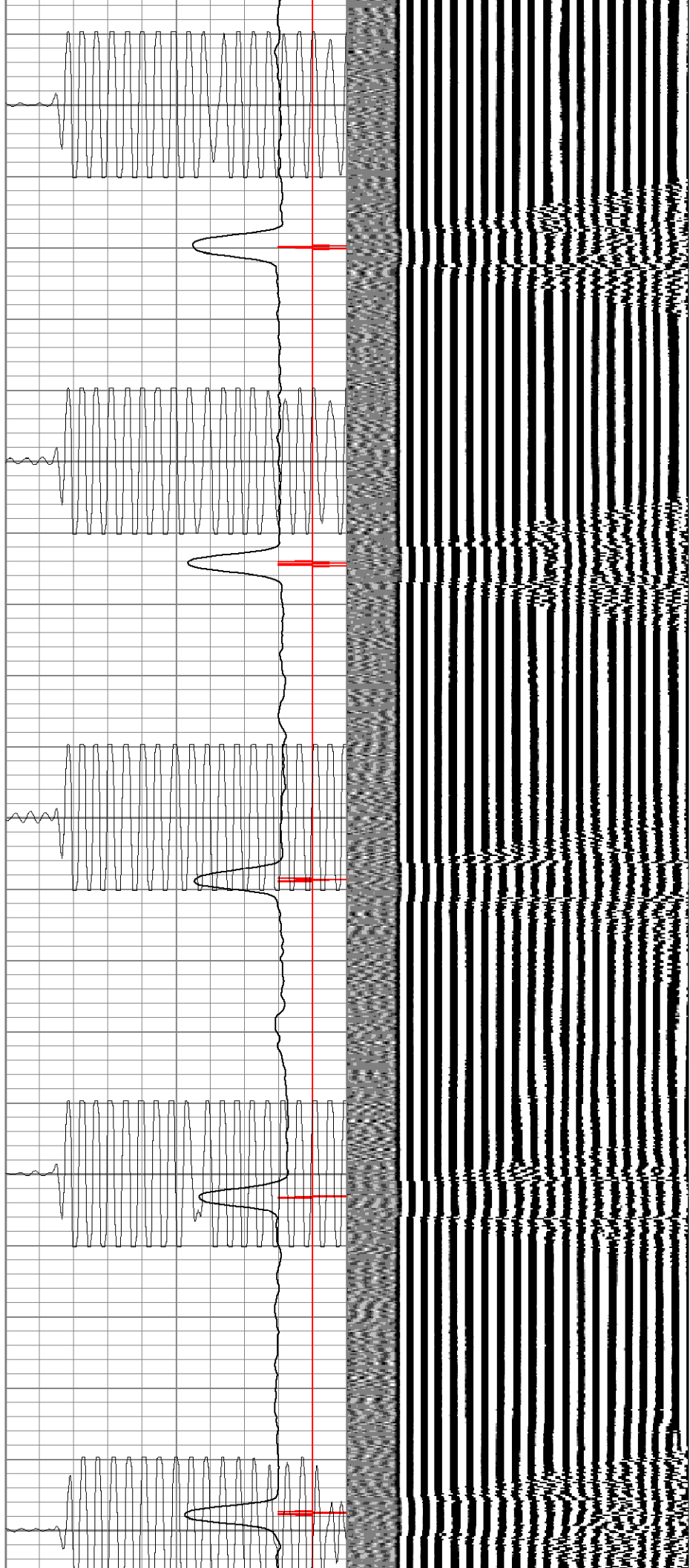
200

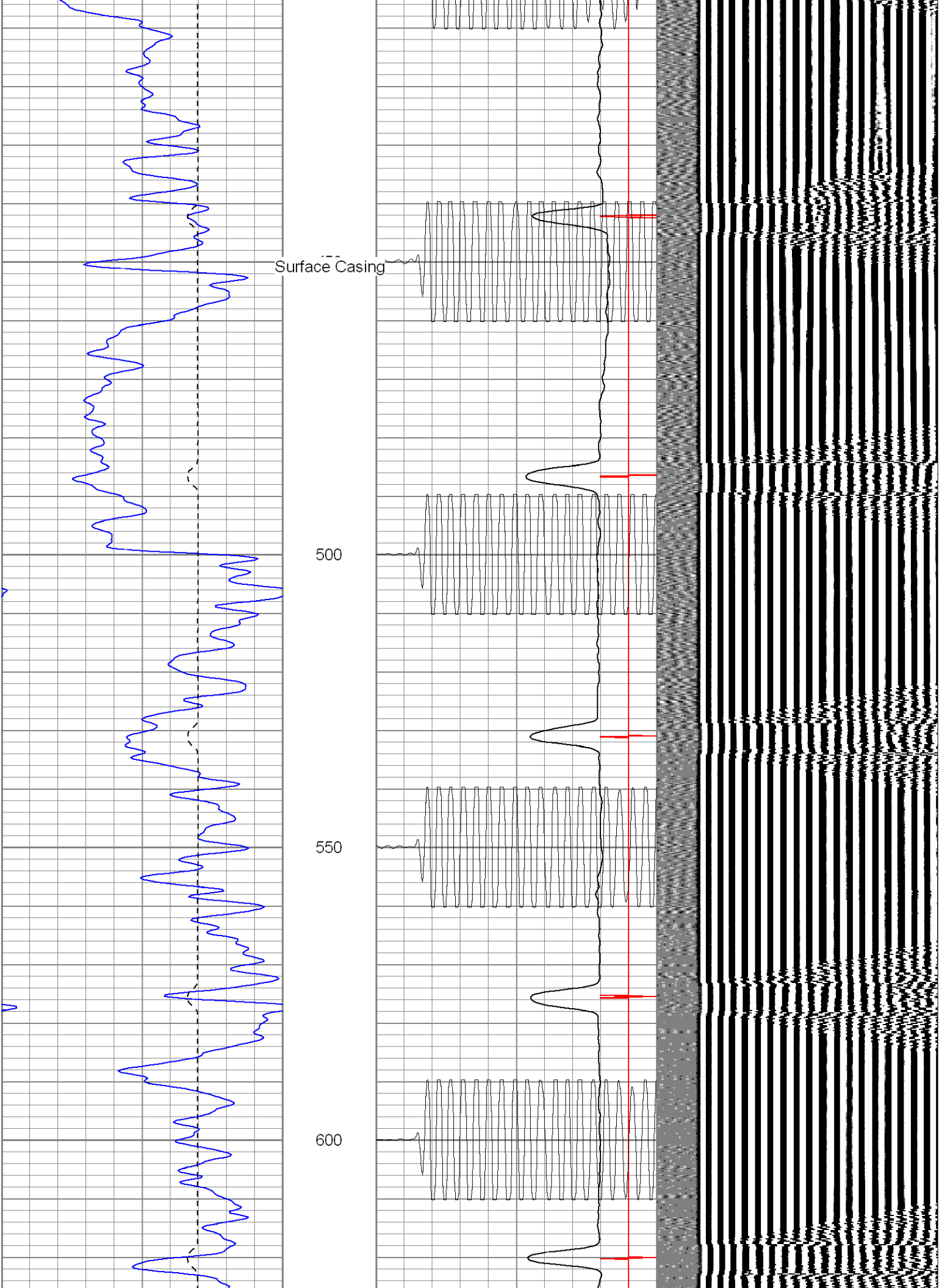
250

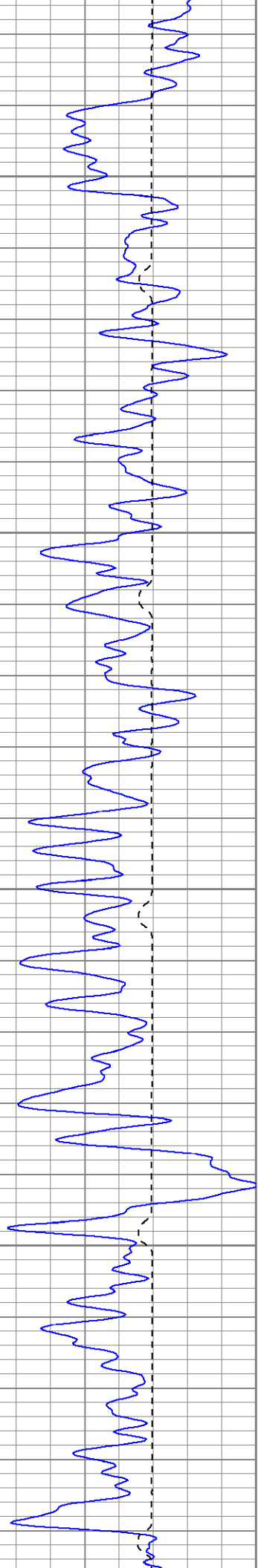
300

350

400





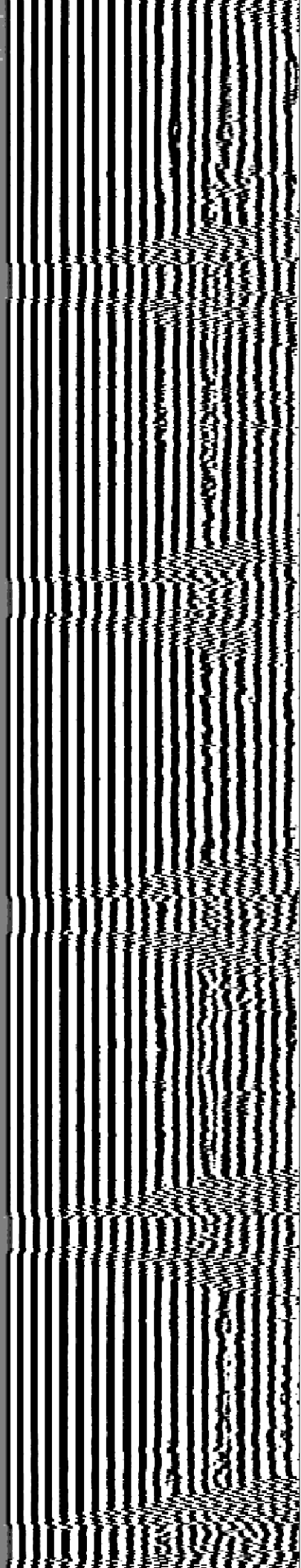
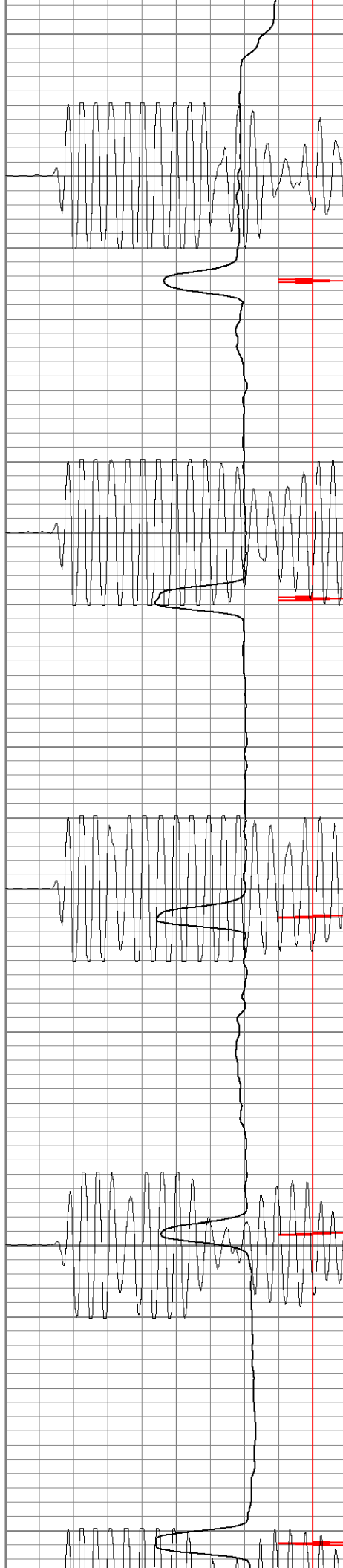


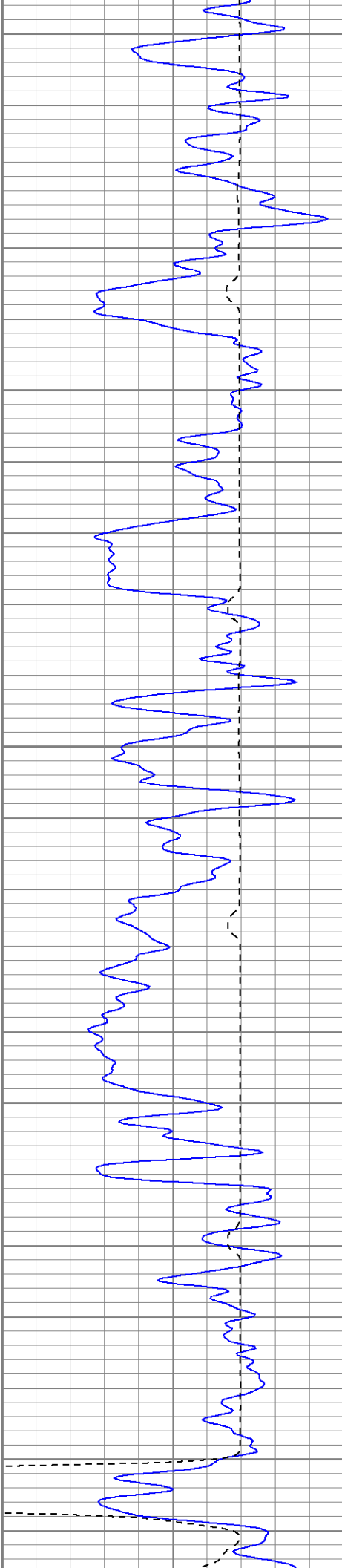
650

700

750

800





850

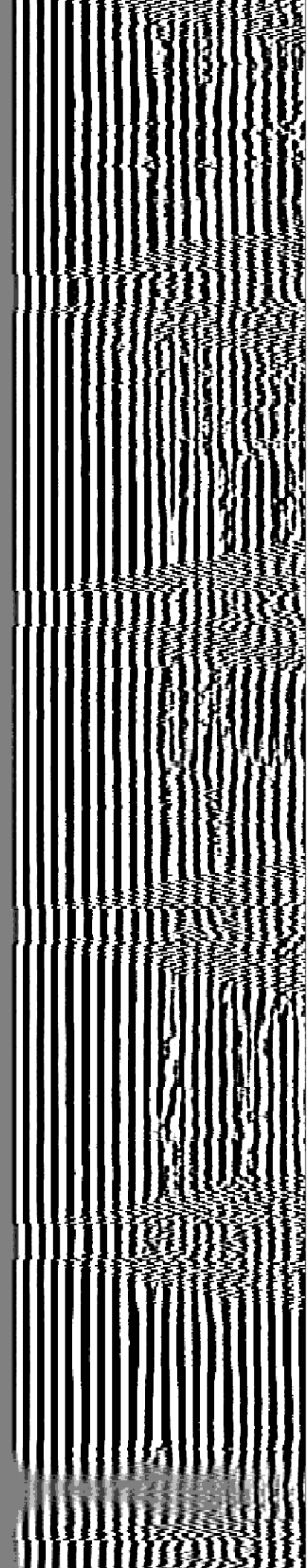
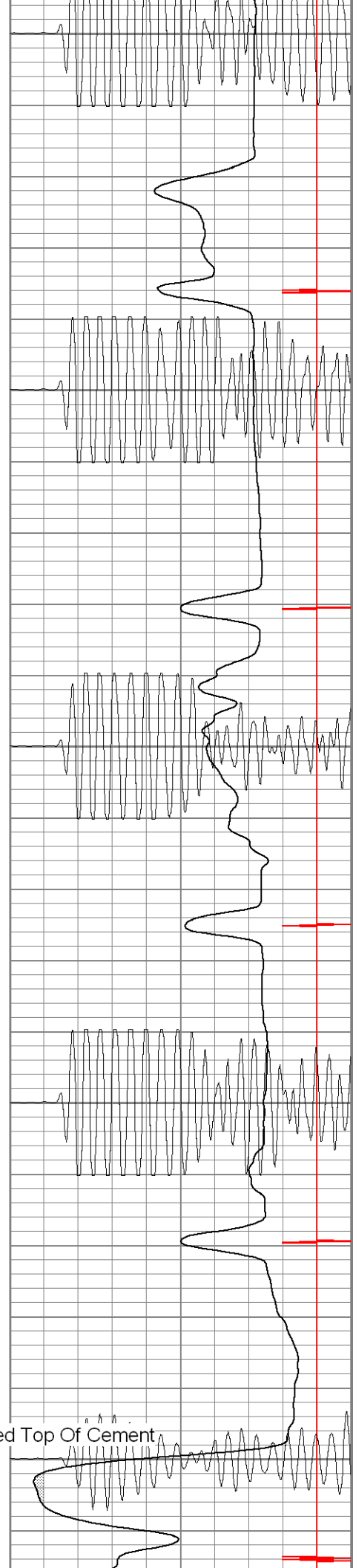
900

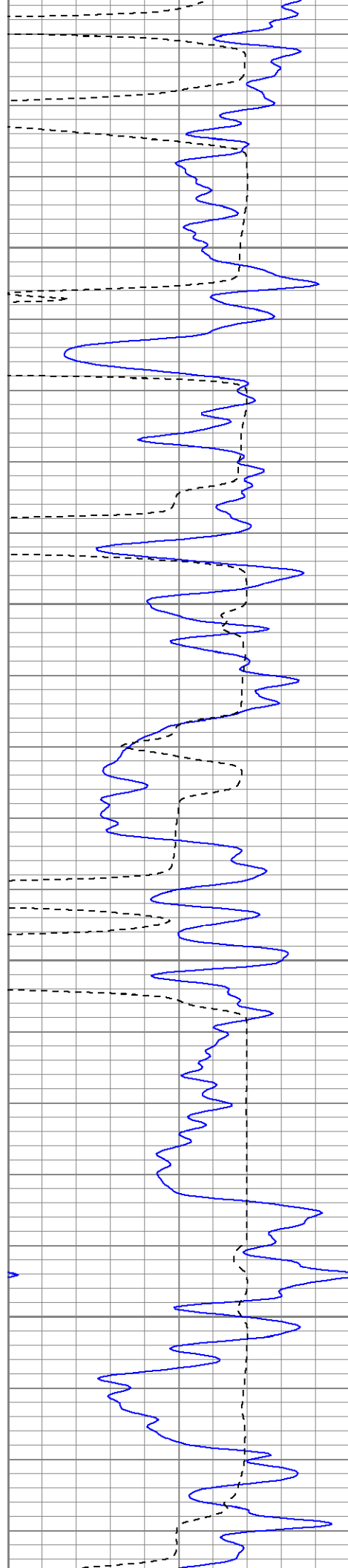
950

1000

Estimated Top Of Cement

1050



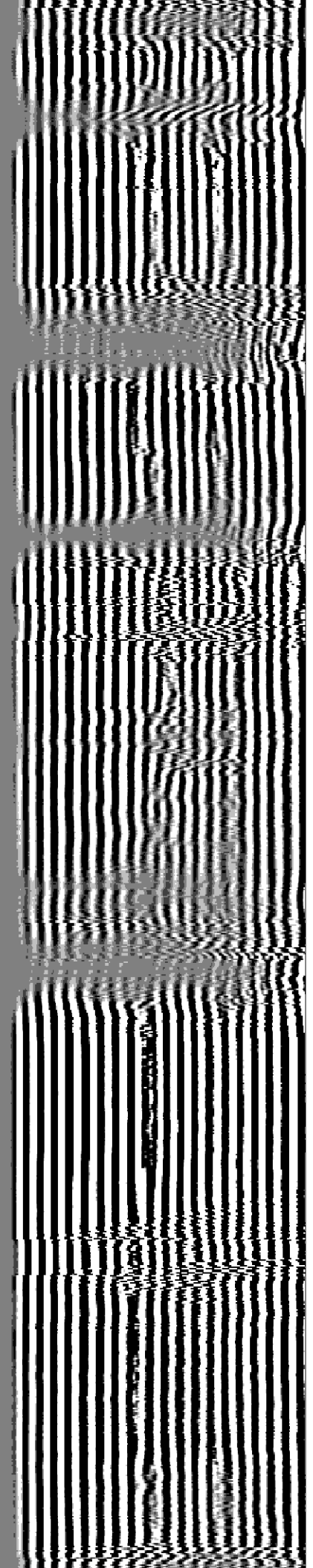
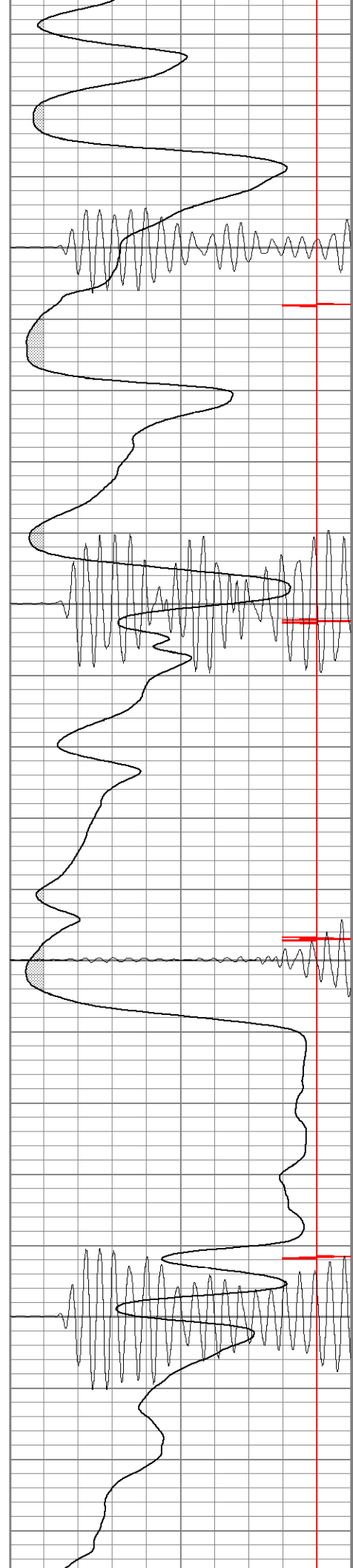


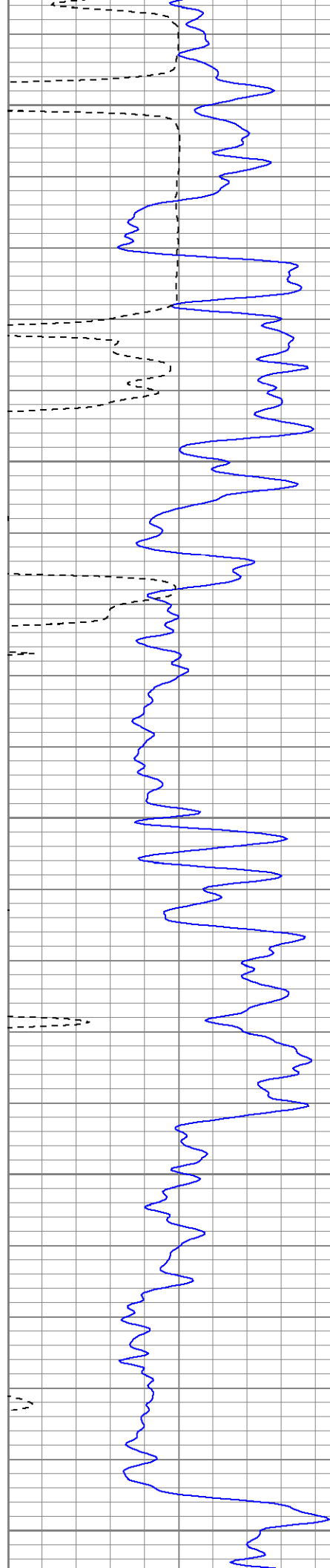
1100

1150

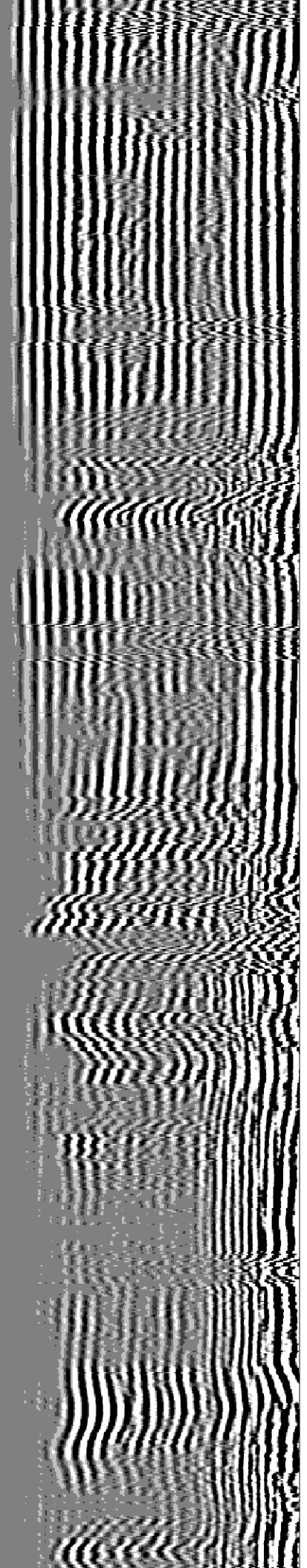
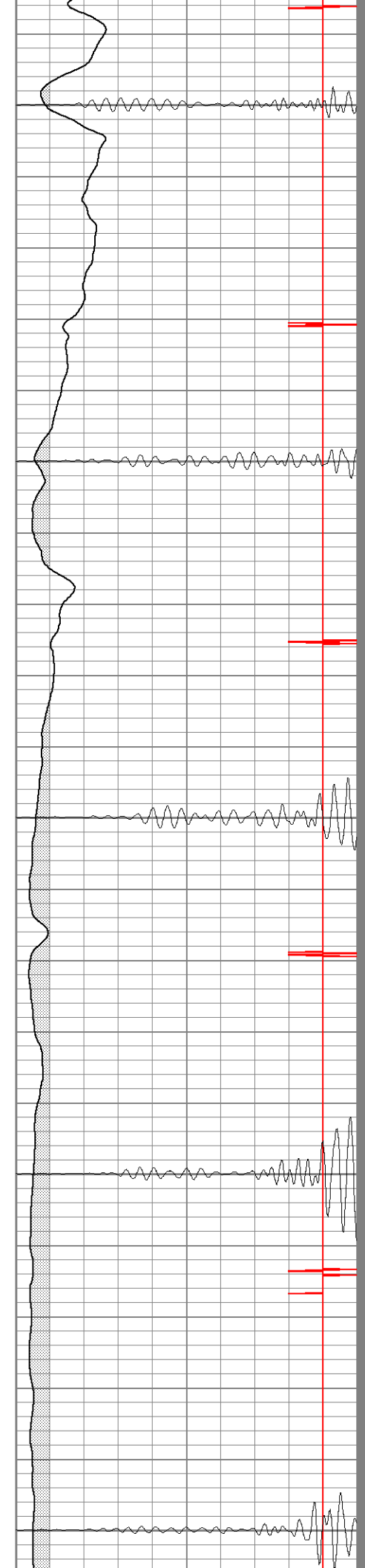
1200

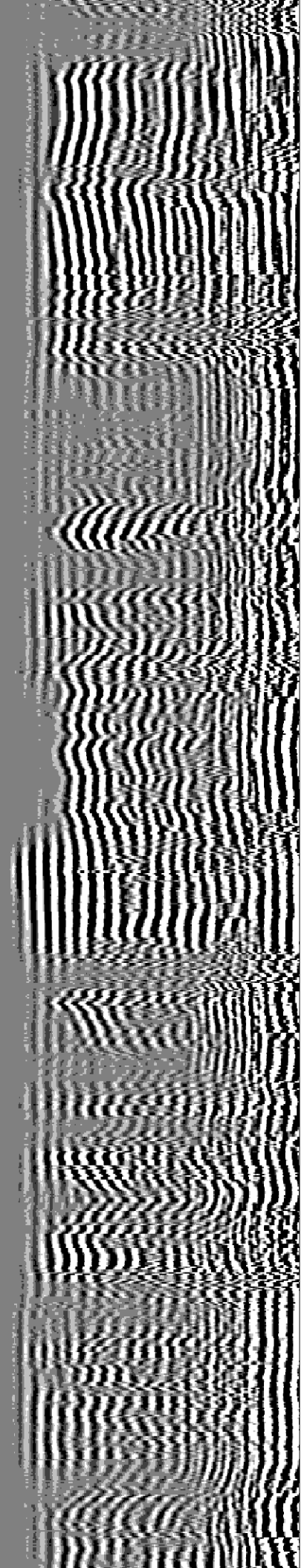
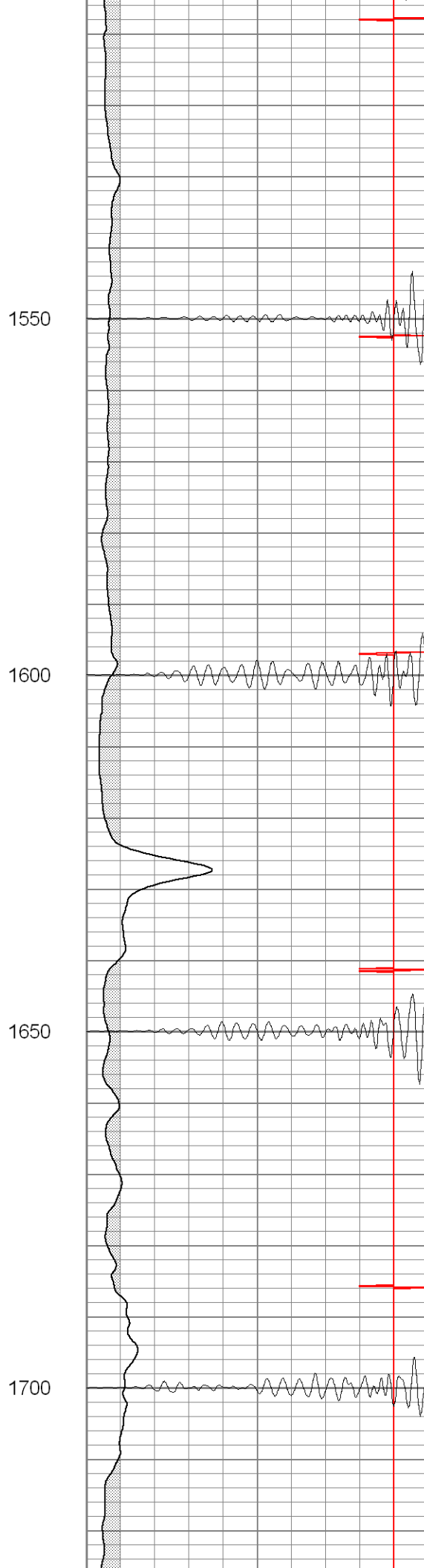
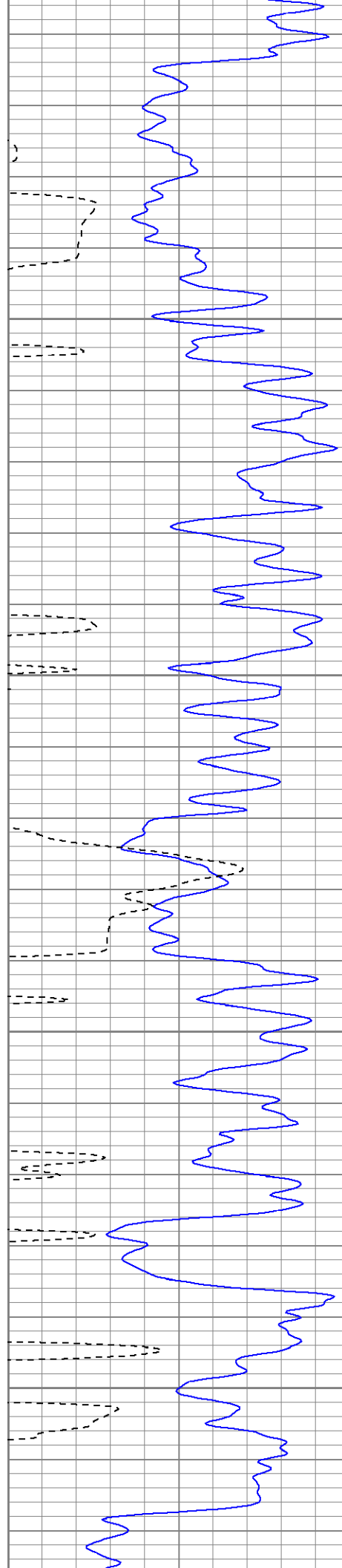
1250

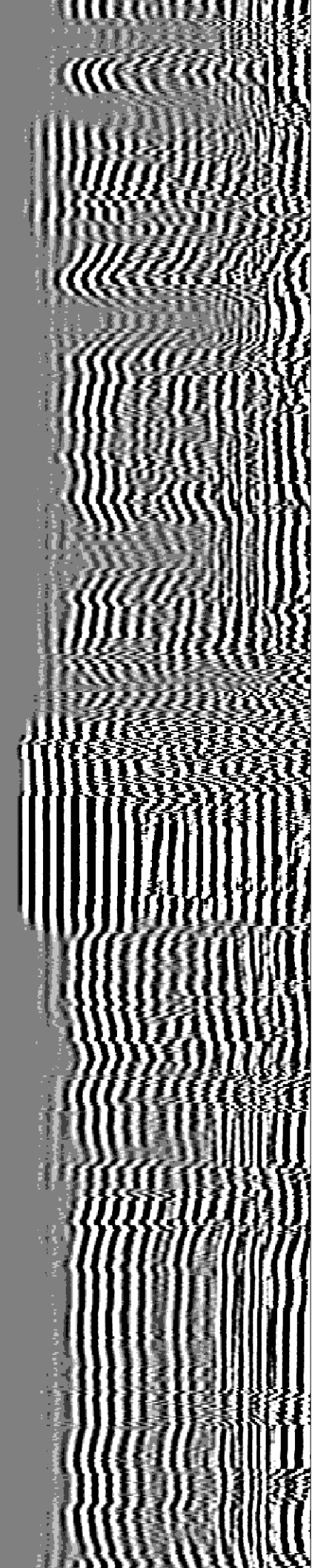
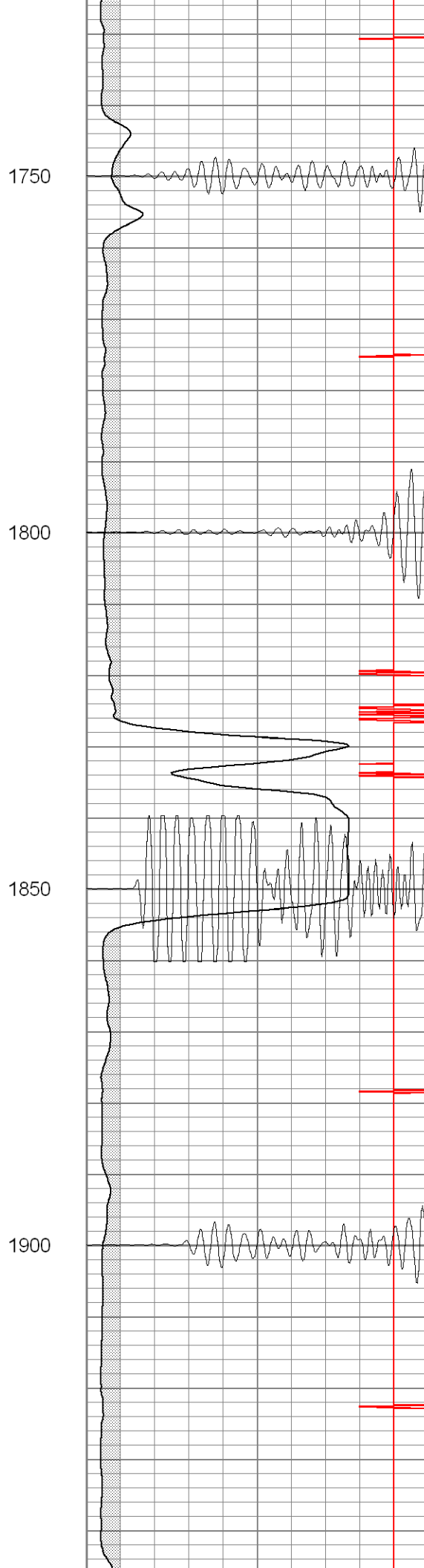
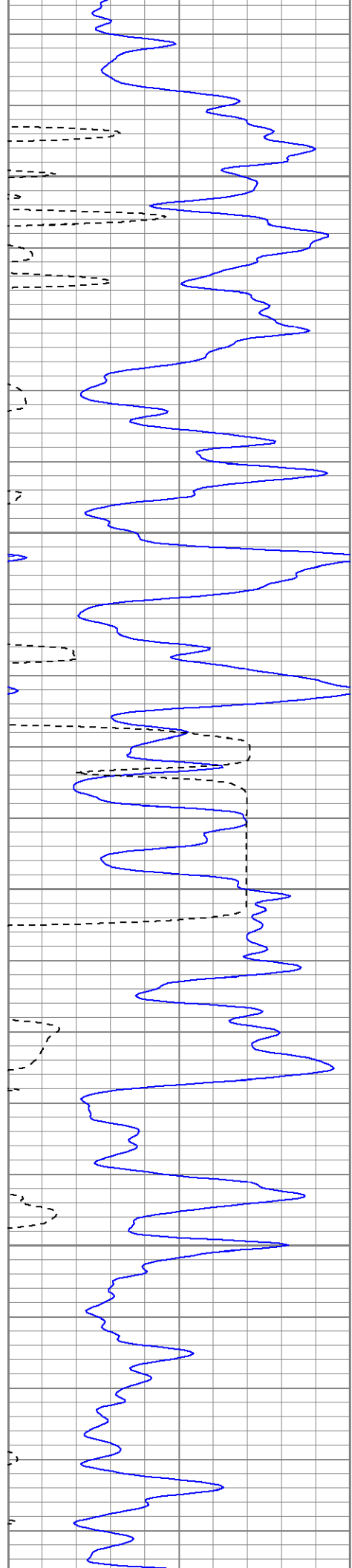


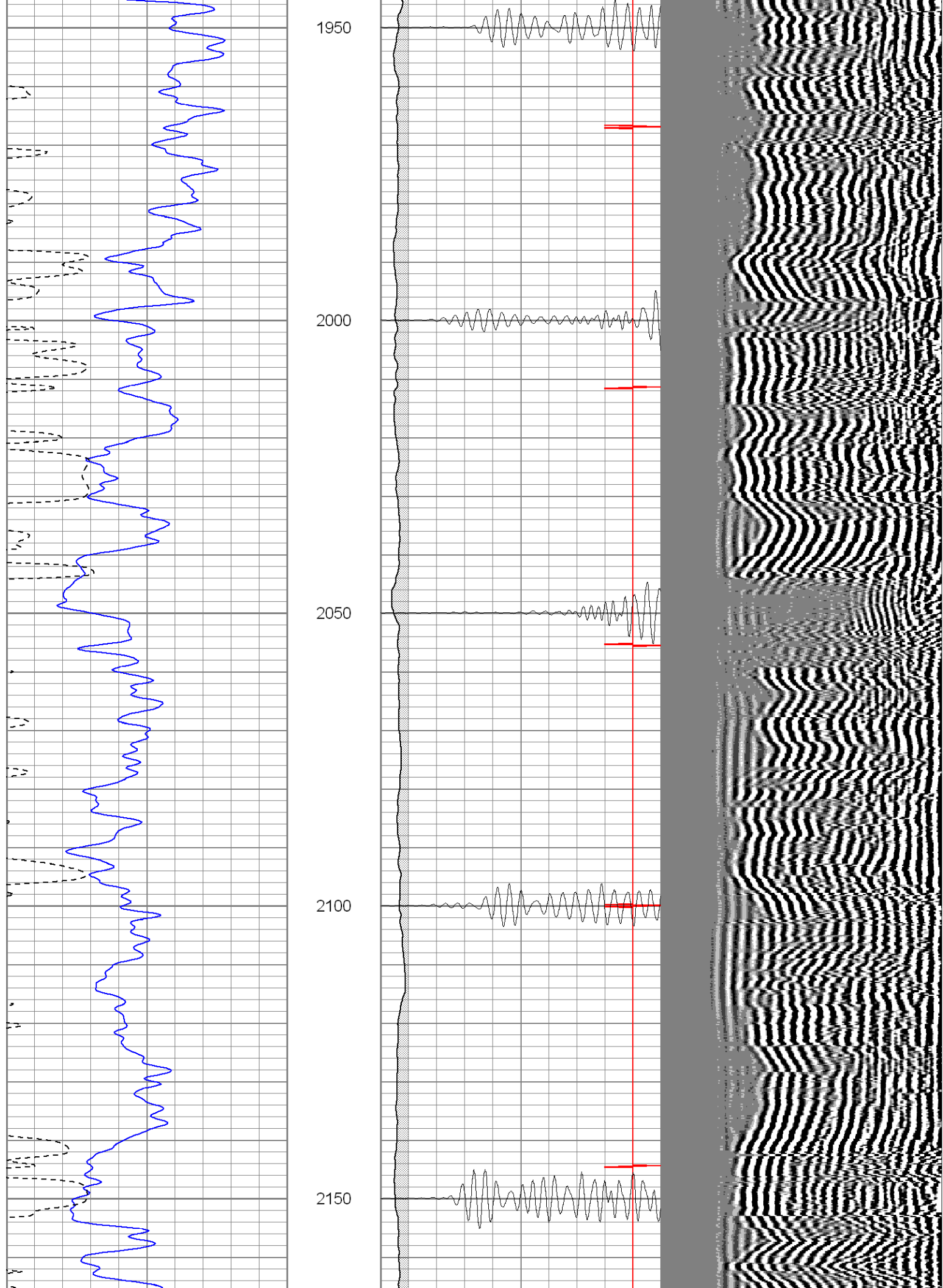


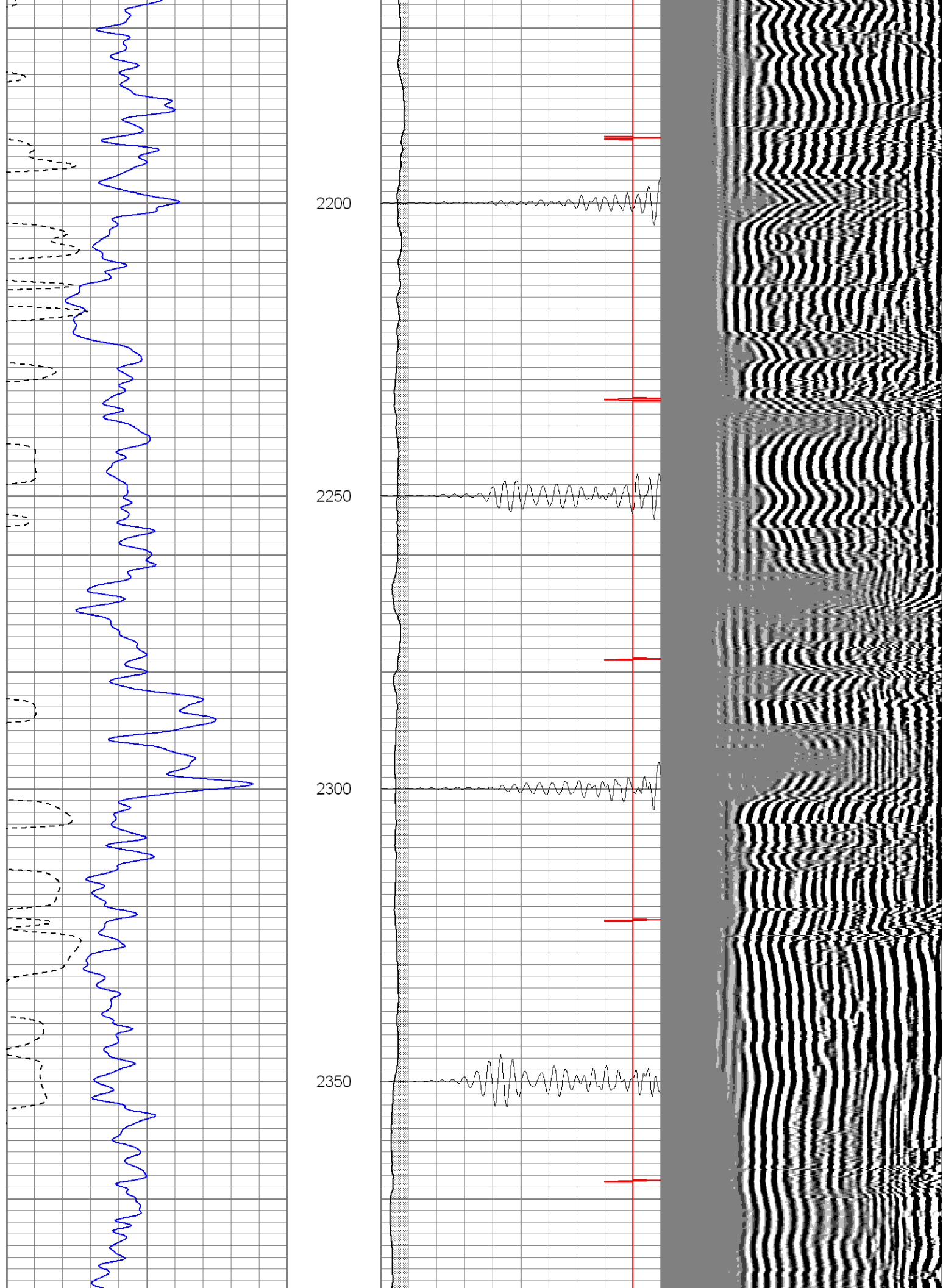
1300
1350
1400
1450
1500

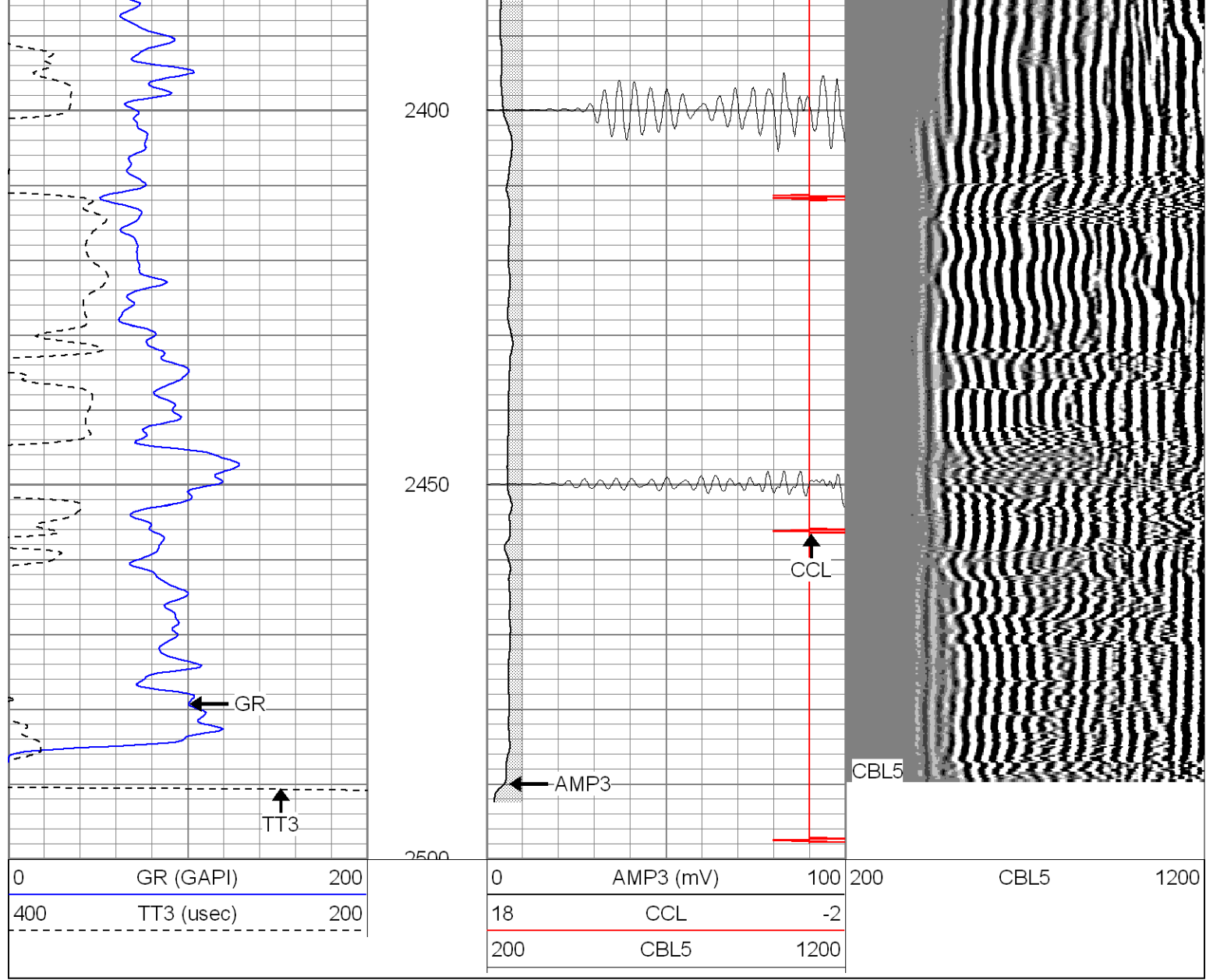










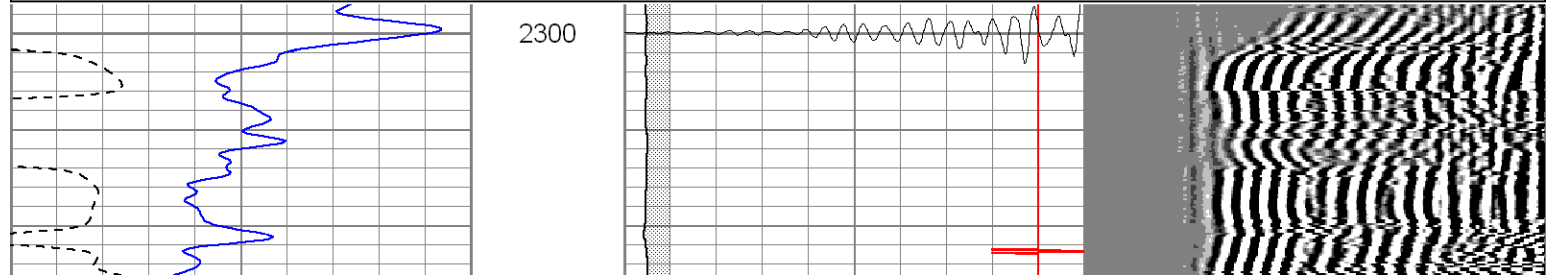


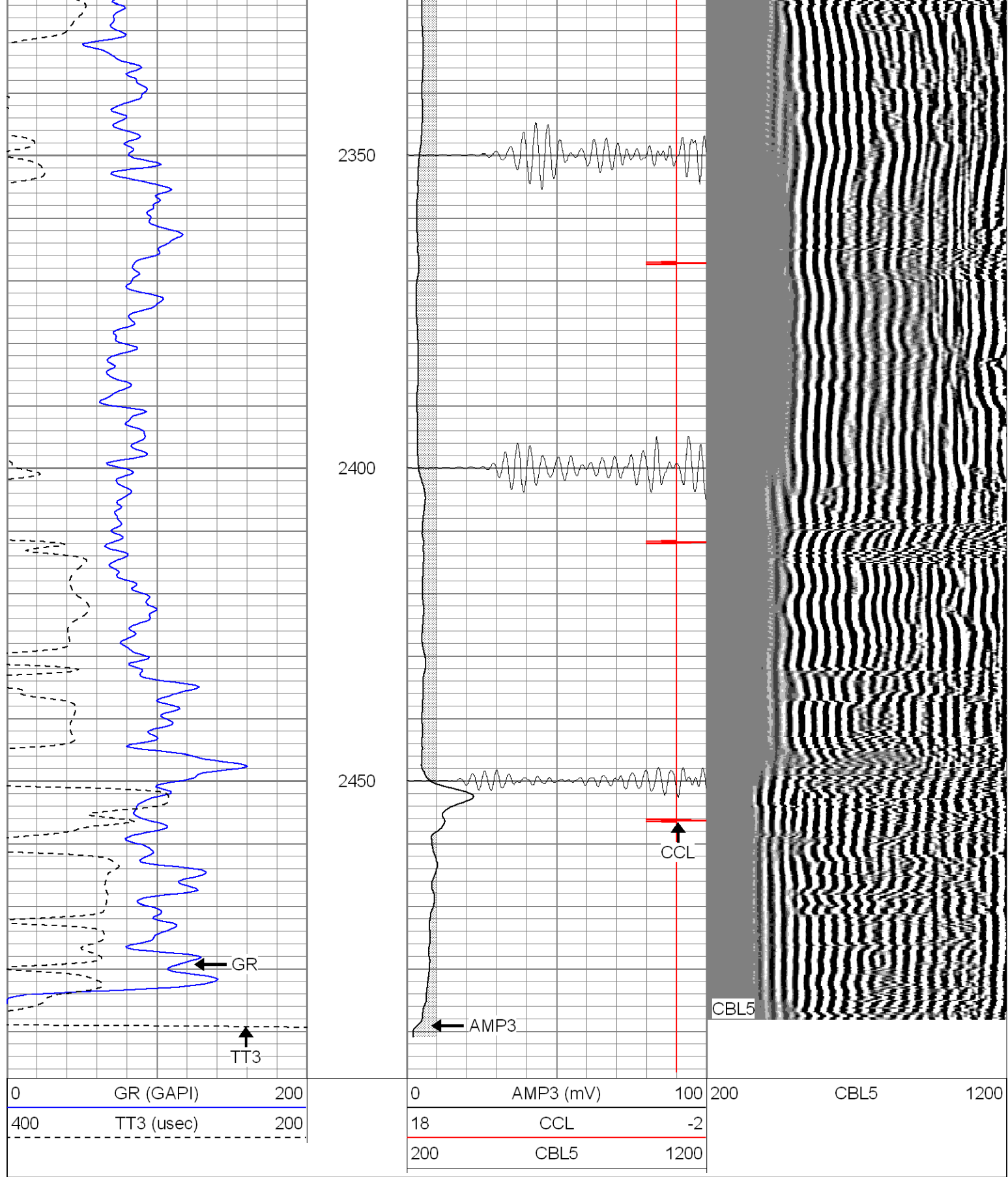
SUPERIOR
 Black Lick, Pa.
 Mercer, Pa.
 Wooster, Oh.
 Cleveland, Ok.
 Trinidad, Co.

Repeat Section 0 PSI

Database File: ac5-13b22808.db
 Dataset Pathname: pass1
 Presentation Format: cblrt
 Dataset Creation: Thu Feb 28 15:07:21 2008 by Log Open-Cased 071220
 Charted by: Depth in Feet scaled 1:240

0	GR (GAPI)	200	0	AMP3 (mV)	100	200	CBL5	1200
400	TT3 (usec)	200	18	CCL	-2			
			200	CBL5	1200			





Calibration Report

Database File: ac5-13b22808.db
 Dataset Pathname: pass1
 Dataset Creation: Thu Feb 28 15:07:21 2008 by Log Open-Cased 071220

Cement Bond Log Calibration Report

Serial Number: Titan5

Serial Number: Titan5
Tool Model: T5
Performed: Thu Feb 28 15:03:21 2008

Depth: 189.22 ft
Casing Diameter: 5.5 in

3' Spacing 5' Spacing

Signal Zero:	0	0	mV
Calibrated Amplitude:	85	85	mV
Reading at Signal Zero:	-0.04	0.0081543	V
Reading in Free Pipe:	1.55	2.4	V

Gain:	53.4591	35.5374
Offset:	2.13836	-0.289783

Gamma Ray Calibration Report

Serial Number: Titan5
Tool Model: T2
Performed: Thu Feb 28 15:03:24 2008

Calibrator Value: 1.0 GAPI

Background Reading: 0.0 cps
Calibrator Reading: 1.0 cps

Sensitivity: 1.3500 GAPI/cps