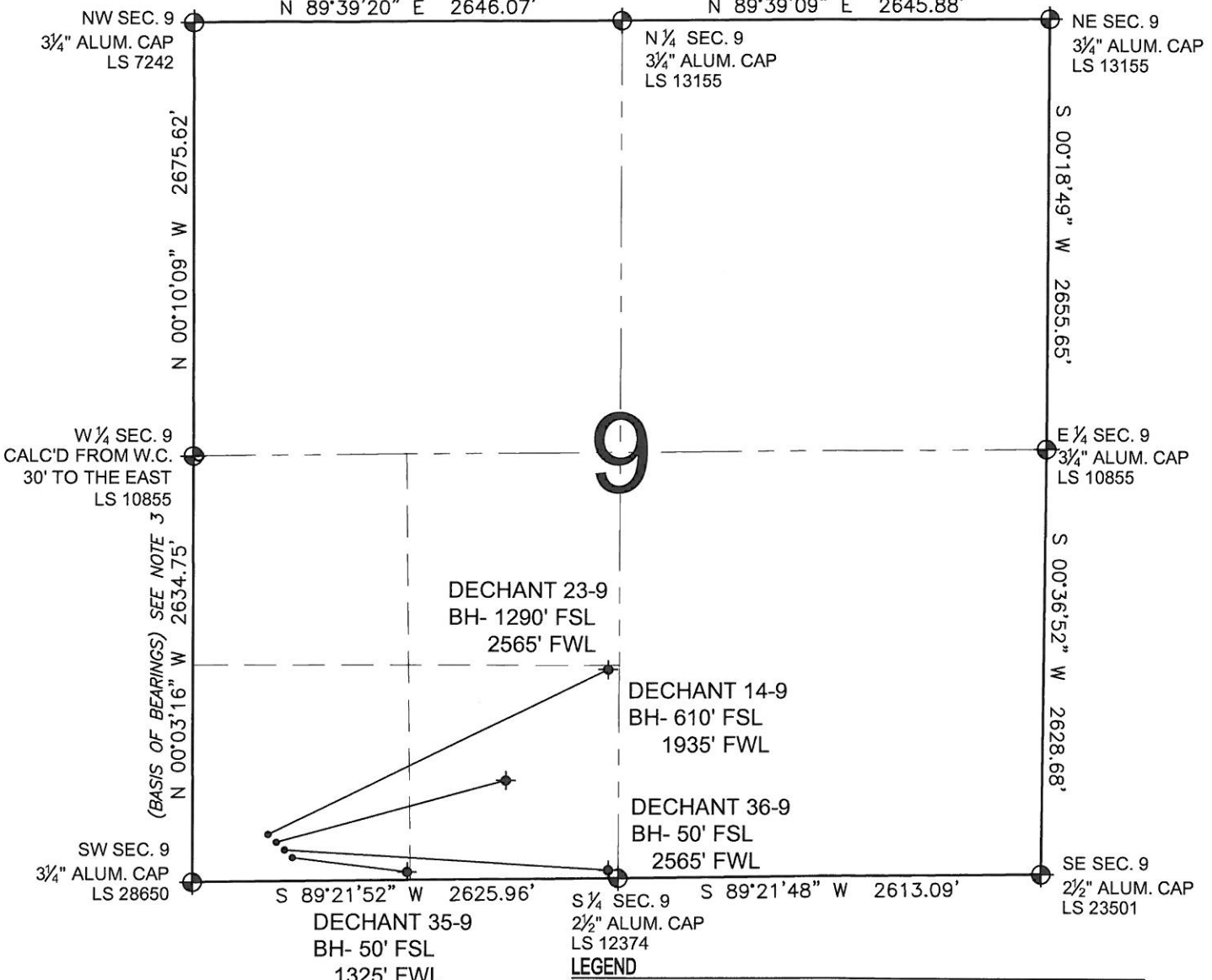


# PAD DRAWING - DECHANT 4 PAD

SECTION 9, TOWNSHIP 2 NORTH, RANGE 65 WEST, 6TH P.M.

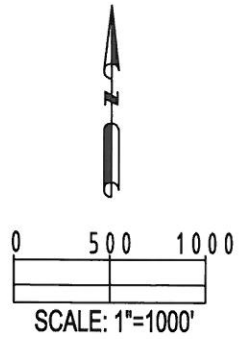


- NOTES:**
- THIS SURVEY WAS DONE BY GPS METHODS AND CONFORMS TO THE MINIMUM STANDARDS SET BY THE C.O.G.C.C., RULE NO. 215 (PDOP VALUE IS LESS THAN 6.0, LATITUDE AND LONGITUDE ARE ACCURATE TO 5 DECIMAL PLACES, AND GPS OBSERVATIONS ARE DIFFERENTIAL AND DONE BY QUALIFIED PERSONNEL.)
  - ELEVATIONS SHOWN AT THE WELL HEAD, AS WELL AS HORIZONTAL CONTROL, ARE BASED ON GPS-RTK VALUES DERIVED FROM DOING 2-HOUR STATIC GPS SESSIONS AND REDUCTIONS USING O.P.U.S. SOLUTIONS.  
VERTICAL = NAVD88; HORIZONTAL = NAD83/92
  - THE BEARINGS SHOWN HEREON ARE BASED ON GPS OBSERVATIONS BETWEEN THE MONUMENTS SHOWN HEREON AS FOUND ON THE FIELD DATE BELOW.
  - DISTANCES SHOWN ARE AT GROUND LEVEL, AS MEASURED IN THE FIELD, WITH TIES TO WELLS MEASURED AT A PERPENDICULAR TO SECTION LINES.

**LEGEND**

- ⊕ = EXISTING MONUMENT
- = PROPOSED WELL
- ◆ = EXISTING WELL
- BH= BOTTOM HOLE

- NOTES:**
- DECHANT 35-9 TO BE AT 256' FSL, 501' FWL.
  - BOTTOM HOLE AT 50' FSL & 1325' FWL.
  - DECHANT 36-9 TO BE AT 267' FSL, 490' FWL.
  - BOTTOM HOLE AT 50' FSL & 2565' FWL.
  - DECHANT 14-9 TO BE AT 279' FSL, 478' FWL.
  - BOTTOM HOLE AT 610' FSL & 1935' FWL.
  - DECHANT 23-9 TO BE AT 290' FSL, 467' FWL.
  - BOTTOM HOLE AT 1290' FSL & 2565' FWL.



REVISIONS	
INITIAL	DATE

PREPARED BY:

**PFS**  
Petroleum Field Services, LLC.  
1801 W. 13th Ave.  
Denver, CO 80204

KERR-MCGEE OIL & GAS ONSHORE LP	
FIELD DATE: 06-21-10	PAD NAME: DECHANT 4 PAD
DRAWING DATE: 07-07-10	SURFACE LOCATION: WELD COUNTY, COLORADO SW 1/4 SW 1/4, SEC. 9, T2N, R65W
BY: TJN	