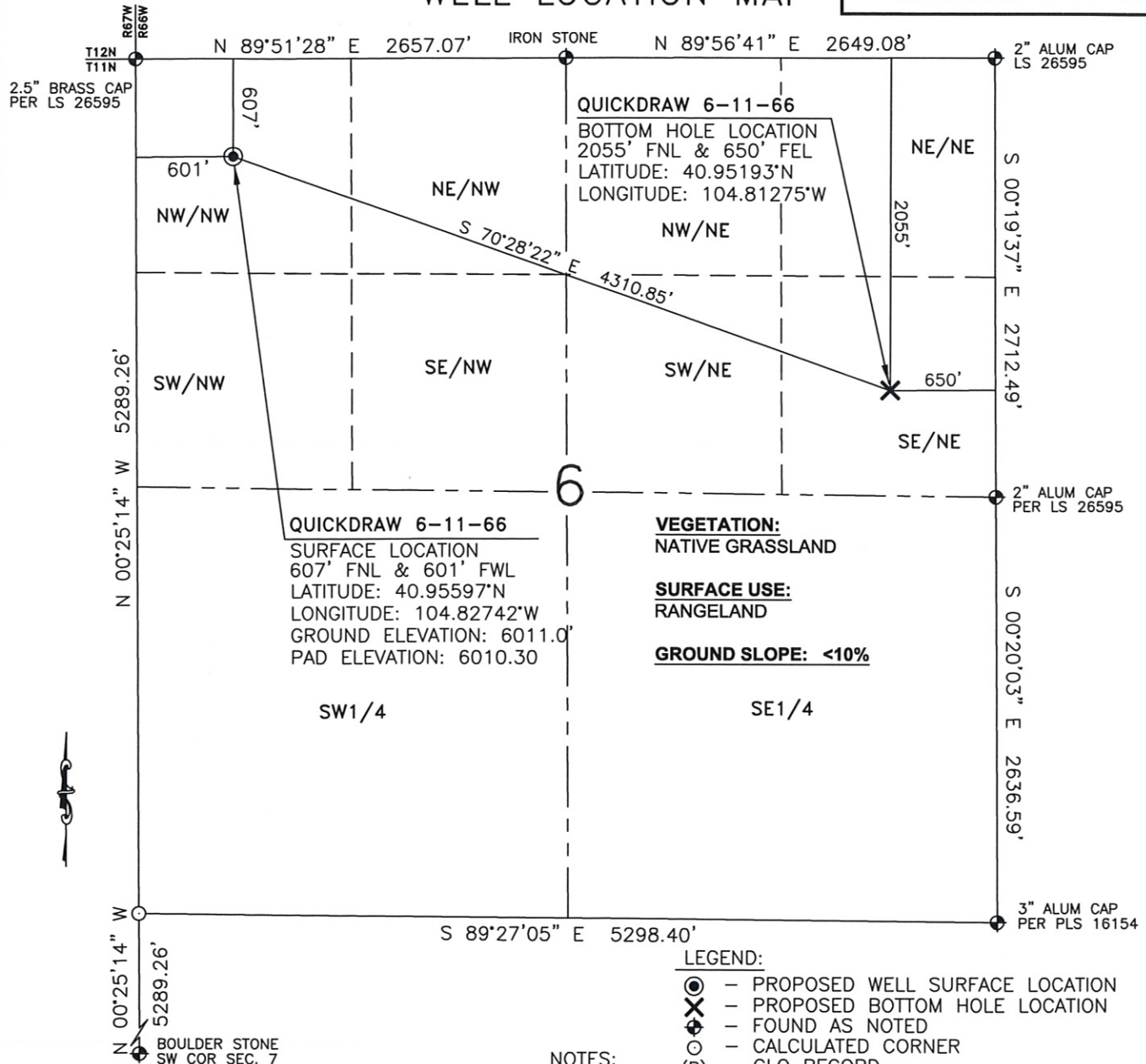
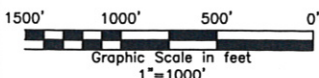


# WELL LOCATION MAP

QUICKDRAW 6-11-66



I, JASON D. LEVANEN, A DULY REGISTERED LAND SURVEYOR IN THE STATE OF COLORADO, DO HEREBY CERTIFY THAT THIS PLAT WAS PREPARED FROM NOTES TAKEN DURING A SURVEY PERFORMED BY ME OR UNDER MY SUPERVISION ON MAY 05, 2010.



WESTERN LAND SERVICES

Sheridan, WY 82801 (307)673-1817

DP: L:\Slawson\Well Plats\Well\_Plats.dwg

Date: 9-2-10

SLAWSON EXPLORATION  
 COMPANY, INC.  
 QUICKDRAW 6-11-66

SL: NW1/4NW1/4, S.6, T11N-R66W  
 BL: SE1/4NE1/4, S.6, T11N-R66W  
 6TH P.M., WELD COUNTY, COLORADO