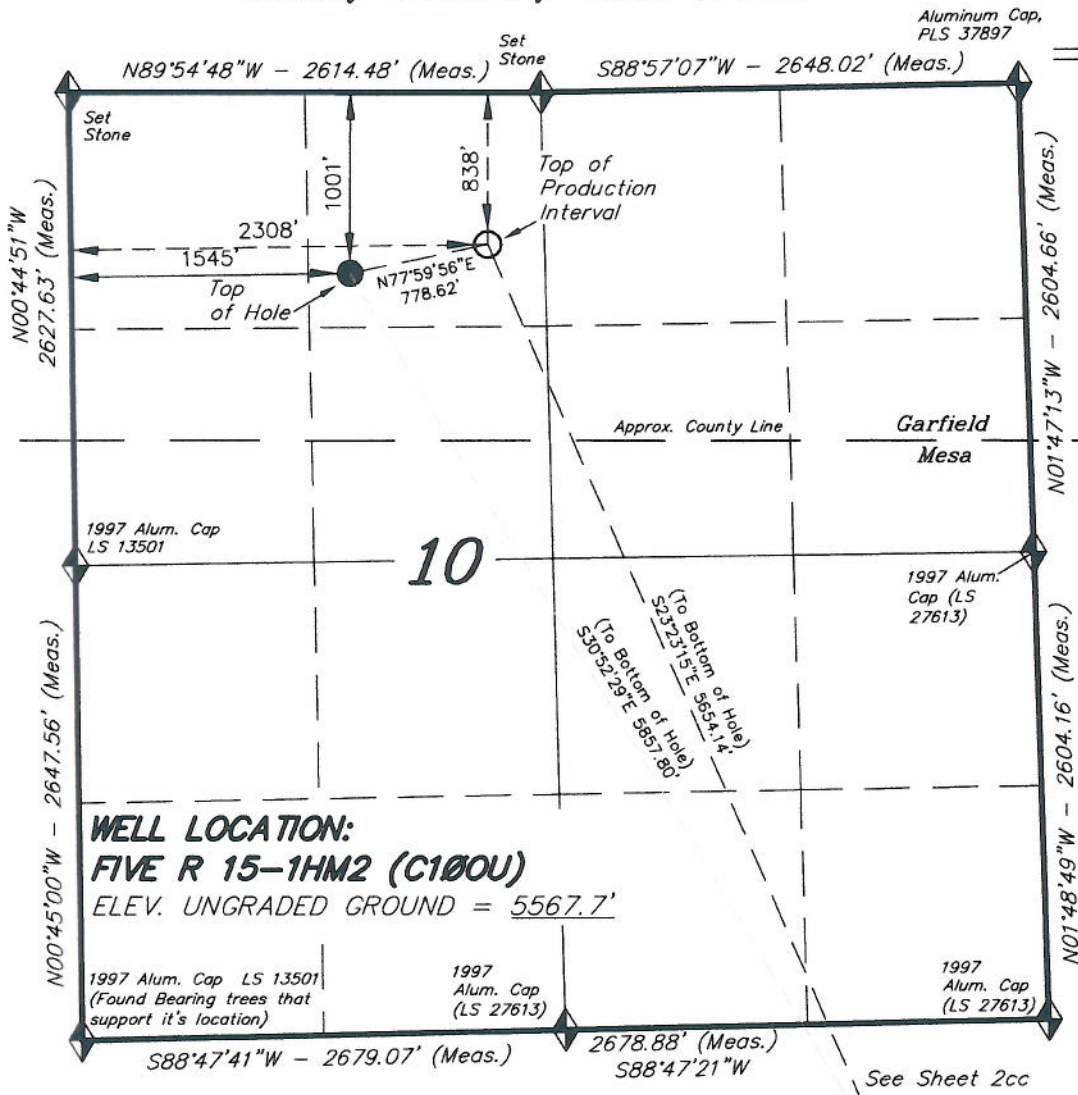
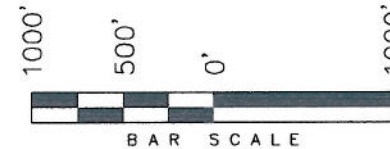


T8S, R96W, 6th P.M.

ENCANA OIL & GAS (USA) INC



WELL LOCATION, FIVE R 15-1HM2 (C100U), LOCATED AS SHOWN IN THE NE 1/4 NW 1/4 OF SECTION 10, T8S, R96W, 6th P.M. GARFIELD COUNTY, COLORADO.



NOTES:

1. Well footages are measured at right angles to the Section Lines.
2. Bearings are based on Global Positioning Satellite observations.
3. G.P.S. Operator: C.D. Slauch, (PDOP) = 2.0

IMPROVEMENT NOTE:

See addendum to legal plat (sheet 2i) for visible improvements within 400' of the proposed well head.

THIS IS TO CERTIFY THAT THE ABOVE PLAT WAS PREPARED FROM FIELD NOTES OF A SURVEY MADE BY ME OR UNDER MY SUPERVISION. THE LOCATION HAS BEEN STAKED ON THE GROUND AS SHOWN ON THE PLAT, AND THAT THE SAME ARE TRUE AND CORRECT TO THE BEST OF MY KNOWLEDGE AND BELIEF.

REGISTERED LAND SURVEYOR
 REGISTRATION NO. 30125
 STATE OF COLORADO

30125

WELL LOCATION:
FIVE R 15-1HM2 (C100U)
 ELEV. UNGRADED GROUND = 5567.7'

NAD 83 (SURFACE LOCATION)	
LATITUDE	= 39°22'07.42" (39.368728)
LONGITUDE	= 108°05'57.27" (108.099242)

◆ = SECTION CORNERS LOCATED

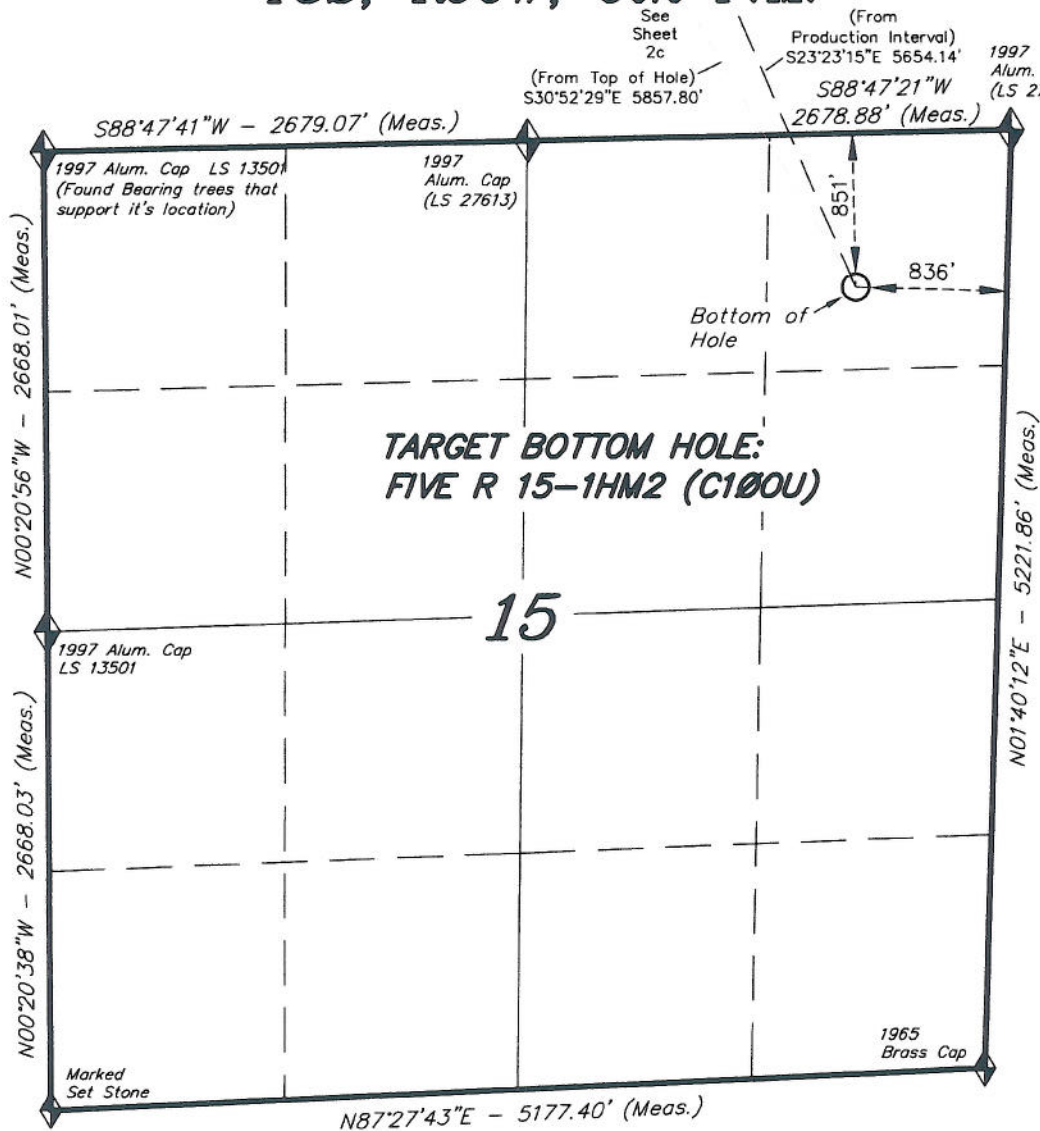
Basis of elevation is the Rifle 2 Triangulation Station. 39°31'53.80" N Lat. & 107°47'07.78" W Long. (NAD 83). Elevation = 5323.1' (NAVD88).

TRI STATE LAND SURVEYING & CONSULTING
 180 NORTH VERNAL AVE. - VERNAL, UTAH 84078
 (435) 781-2501

DATE SURVEYED: 03-30-10	SURVEYED BY: C.D.S.	SHEET 2c OF 11
DATE DRAWN: 08-31-10	DRAWN BY: L.C.S.	
REVISED:	SCALE: 1" = 1000'	

T8S, R96W, 6th P.M.

ENCANA OIL & GAS (USA) INC



TARGET BOTTOM HOLE, FIVE R 15-1HM2 (C100U), LOCATED AS SHOWN IN THE NE 1/4 NE 1/4 OF SECTION 15, T8S, R96W, 6th P.M. MESA COUNTY, COLORADO.



1. Well footages are measured at right angles to the Section Lines.
2. Bearings are based on Global Positioning Satellite observations.

THIS IS TO CERTIFY THAT THE ABOVE PLAT WAS PREPARED FROM FIELD NOTES OF ACTUAL SURVEYS MADE BY ME OR UNDER MY SUPERVISION. THE LOCATION HAS BEEN STAKED ON THE GROUND AND SHOWN ON THE PLAT, AND THAT THE SAME ARE TRUE AND CORRECT TO THE BEST OF MY KNOWLEDGE AND BELIEF.

Stanley C. ...
 # 30125
 REGISTERED LAND SURVEYOR
 REGISTRATION No. 40925
 STATE OF COLORADO

◆ = SECTION CORNERS LOCATED

Basis of elevation is the McCary Station.
 39°22'27.10" N Lat. & 108°09'44.37" W
 Long. (NAD 83). El. 5175' (NAVD88).

TRI STATE LAND SURVEYING & CONSULTING

180 NORTH VERNAL AVE. - VERNAL, UTAH 84078

DATE SURVEYED: 03-30-10	SURVEYED BY: C.D.S.	SHEET 2cc OF 11
DATE DRAWN: 08-31-10	DRAWN BY: L.C.S.	
REVISED:	SCALE: 1" = 1000'	