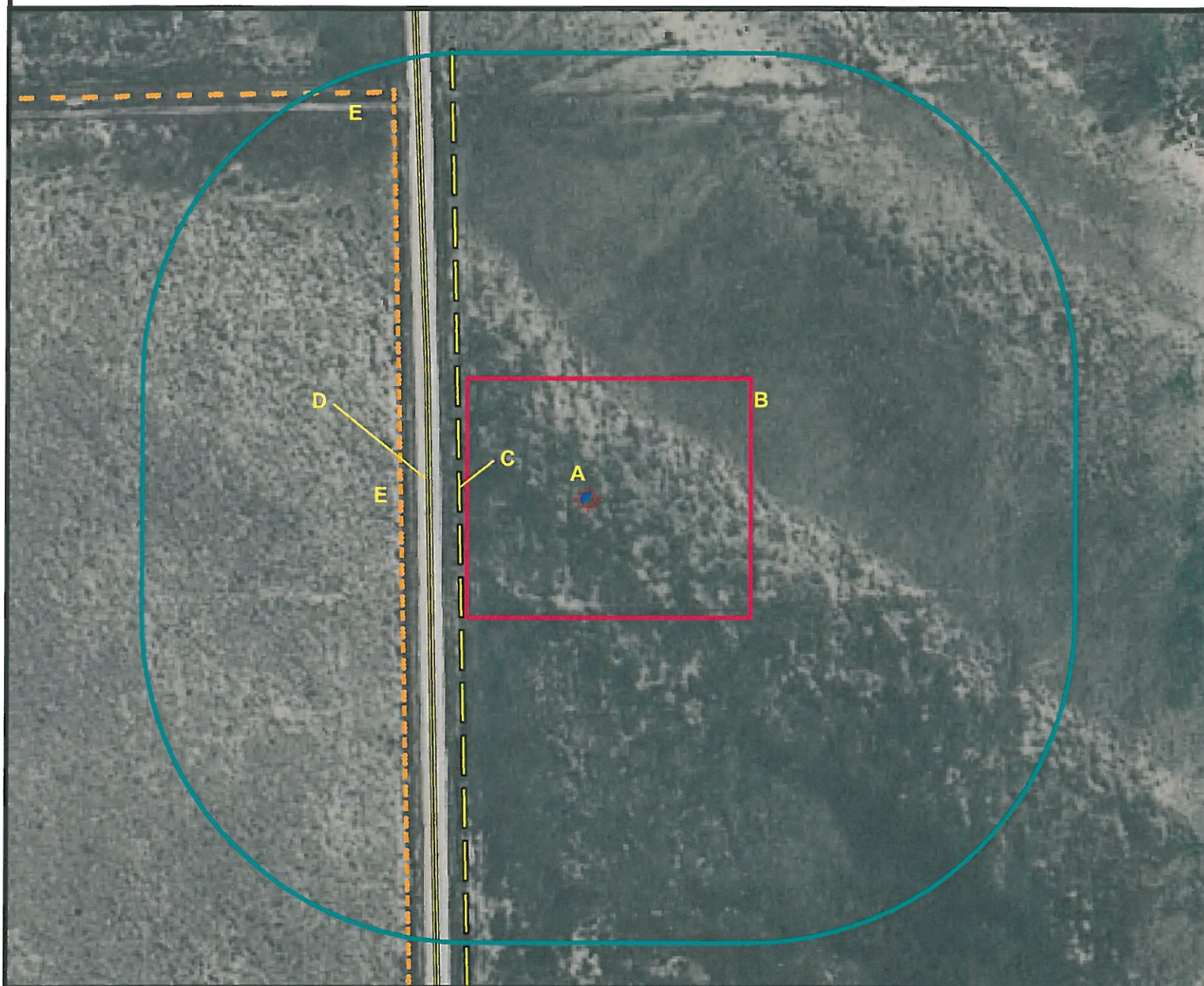


Location Drawing



A. Proposed Well FRANK TRUST 11-11H. E. Fences are 230' W and 563' NW.

B. Operational Disturbance Area.

C. Overhead Power Lines is 180' W.

D. County Road 93 is 201' W.



Legend

	Proposed Well		Building/Residence
	Existing Well		Oil & Gas Equipment
	Plugged Well		Water Body
	Water Well		Utility Box
	CattleGuard/Gate		Railroad
	Bridge		Fence
	Disturbance Area		Overhead Power Line
	400' Radius		Underground Pipeline
	Facilities Enclosure		County Road
			Access Road
			Ditch/Canal
			Concrete Ditch

400ft Radius Map

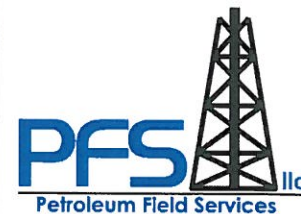
FRANK TRUST 11-11H

Surface Location: T6N R61W S11
Description of surface uses: CRP

Field Date: 06/17/2010
Drawing Date: 06/24/2010
Drafter: KLM
Checked By: KLM

Aerial Photo supplied by NAIP (2009)

Prepared for:
**PETROLEUM
DEVELOPMENT
CORPORATION**



Use our resources to find yours!
www.petro-fs.com

1801 W. 13th Ave Suite 207
Denver, CO 80204
(303) 928-7128
111 E. Third Street
Rifle, CO 81650
(970) 625-4740