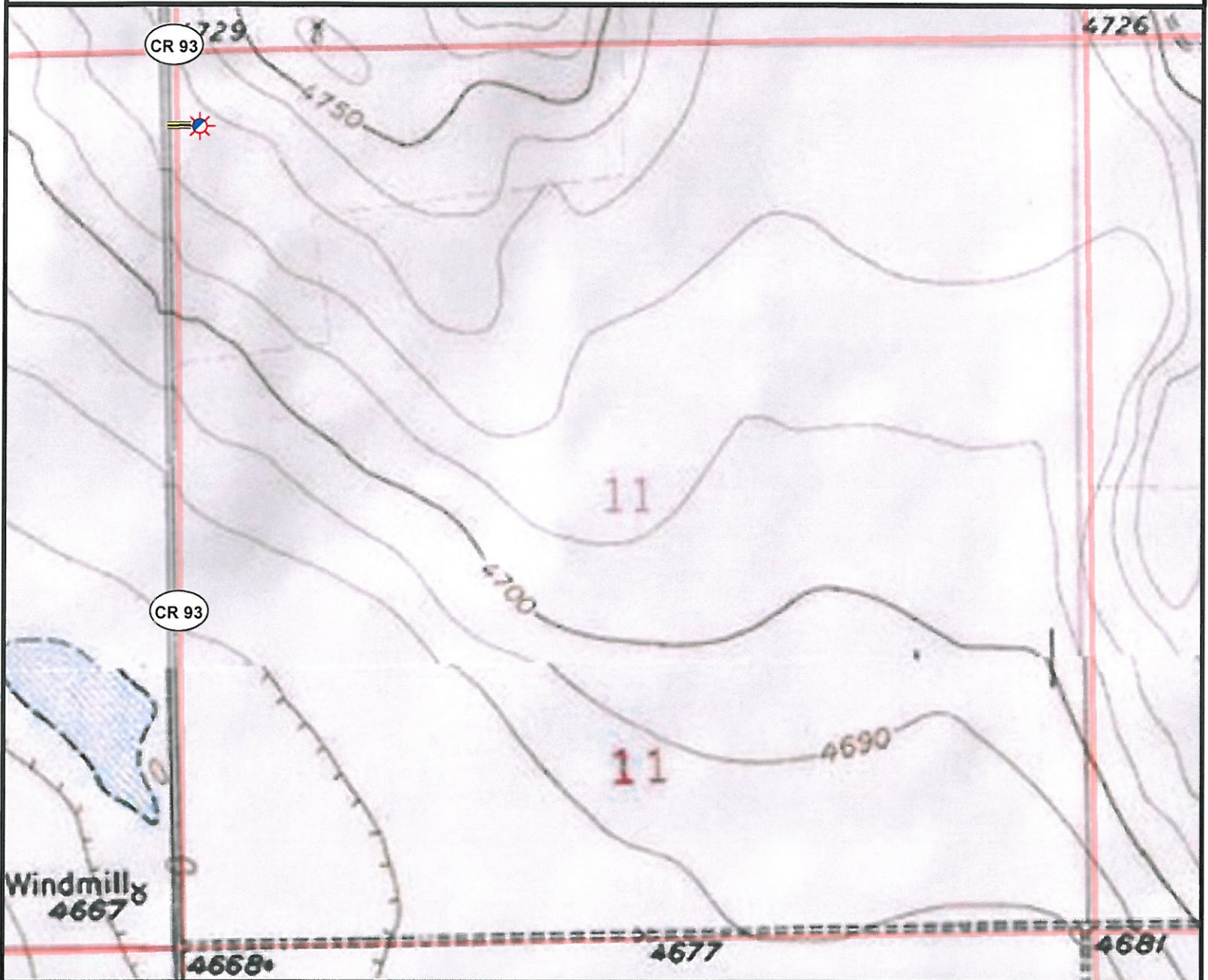


# Access Road Map



## Legend

- |                      |                      |
|----------------------|----------------------|
| Proposed Well        | Building/Residence   |
| Existing Well        | Oil & Gas Equipment  |
| Plugged Well         | Water Body           |
| Water Well           | Utility Box          |
| CattleGuard/Gate     | Railroad             |
| Bridge               | Fence                |
| Disturbance Area     | Overhead Power Line  |
| 1000' Radius         | Underground Pipeline |
| Facilities Enclosure | Access Road          |
|                      | Ditch/Canal          |
|                      | Concrete Ditch       |

## Access Road Map

**FRANK TRUST 11-11H**

**Surface Location: T6N R61W S11**

Field Date: 06/17/2010  
 Drawing Date: 06/24/2010  
 Drafter: KLM  
 Checked By: KLM

Topographic data courtesy of USGS

**Prepared for:**  
**PETROLEUM**  
**DEVELOPMENT**  
**CORPORATION**



Use our resources to find yours!  
[www.petro-fs.com](http://www.petro-fs.com)

1801 W. 13th Ave Suite 207  
 Denver, CO 80204  
 (303) 928-7128  
 Rifle, CO 81650  
 (970) 625-4740