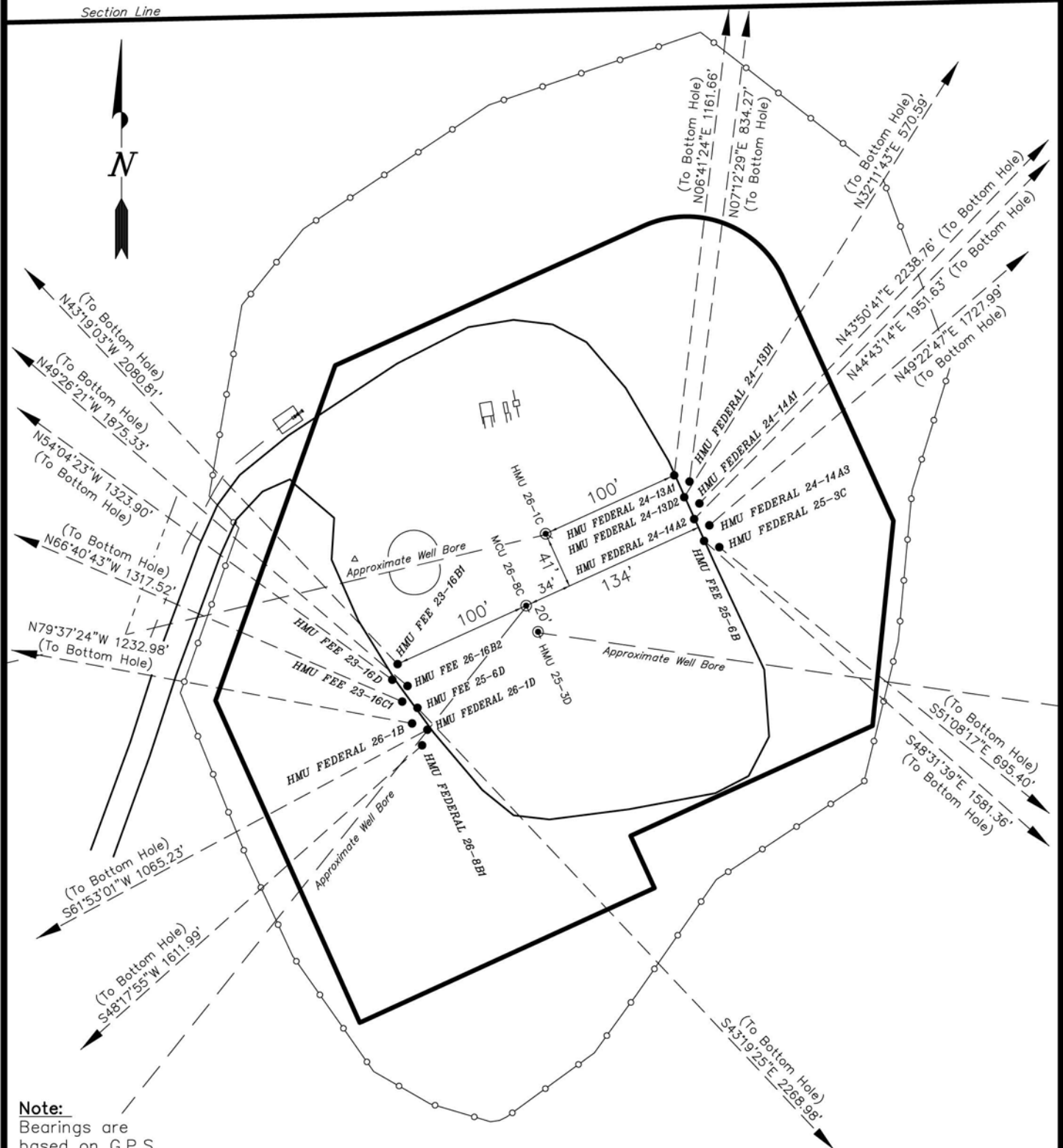


ENCANA OIL & GAS (USA) INC

DETAILED MULTI WELL PLAN WELL PAD INTERFERENCE PLAT

WELL PAD (D25W)

Section 25, T7S, R93W, 6th P.M.



Note:

Bearings are based on G.P.S. observations.

SURVEYED BY: C.D.S.	DATE SURVEYED: 07-08-10
DRAWN BY: F.T.M.	DATE DRAWN: 07-29-10
SCALE: 1" = 100'	REVISED:

Tri State
Land Surveying, Inc.
180 NORTH VERNAL AVE. VERNAL, UTAH 84078
(435) 781-2501

SHEET
3a
OF 11

ENCANA OIL & GAS (USA) INC

DETAILED MULTI WELL PLAN WELL PAD INTERFERENCE PLAT WELL PAD (D25W)

Section 25, T7S, R93W, 6th P.M.

TOP HOLE FOOTAGES

HMU FEE 23-16B1 (D25W)
460' FNL & 525' FWL
HMU FEE 23-16D (D25W)
471' FNL & 521' FWL
HMU FEE 23-16B2 (D25W)
476' FNL & 532' FWL
HMU FEE 23-16C1 (D25W)
487' FNL & 528' FWL
HMU FEE 25-6D (D25W)
491' FNL & 539' FWL
HMU FEDERAL 26-1B (D25W)
502' FNL & 535' FWL
HMU FEDERAL 26-1D (D25W)
507' FNL & 546' FWL
HMU FEDERAL 26-8B1 (D25W)
518' FNL & 542' FWL

TOP HOLE FOOTAGES

HMU FEDERAL 24-13A1 (D25W)
331' FNL & 723' FWL
HMU FEDERAL 24-13D1 (D25W)
335' FNL & 733' FWL
HMU FEDERAL 24-13D2 (D25W)
346' FNL & 730' FWL
HMU FEDERAL 24-14A1 (D25W)
351' FNL & 740' FWL
HMU FEDERAL 24-14A2 (D25W)
362' FNL & 736' FWL
HMU FEDERAL 24-14A3 (D25W)
366' FNL & 747' FWL
HMU FEE 25-6B (D25W)
377' FNL & 743' FWL
HMU FEDERAL 25-3C (D25W)
382' FNL & 754' FWL

BOTTOM HOLE FOOTAGES

HMU FEE 23-16B1 (D25W)
1070' FSL & 880' FEL
HMU FEE 23-16D (D25W)
320' FSL & 540' FEL
HMU FEE 23-16B2 (D25W)
760' FSL & 875' FEL
HMU FEE 23-16C1 (D25W)
50' FSL & 675' FEL
HMU FEE 25-6D (D25W)
2175' FNL & 2075' FWL
HMU FEDERAL 26-1B (D25W)
265' FNL & 675' FEL
HMU FEDERAL 26-1D (D25W)
995' FNL & 400' FEL
HMU FEDERAL 26-8B1 (D25W)
1575' FNL & 675' FEL

BOTTOM HOLE FOOTAGES

HMU FEDERAL 24-13A1 (D25W)
820' FSL & 875' FWL
HMU FEDERAL 24-13D1 (D25W)
490' FSL & 850' FWL
HMU FEDERAL 24-13D2 (D25W)
130' FSL & 1040' FWL
HMU FEDERAL 24-14A1 (D25W)
1230' FSL & 2315' FWL
HMU FEDERAL 24-14A2 (D25W)
995' FSL & 2130' FWL
HMU FEDERAL 24-14A3 (D25W)
730' FSL & 2075' FWL
HMU FEE 25-6B (D25W)
1450' FNL & 1915' FWL
HMU FEDERAL 25-3C (D25W)
830' FNL & 1290' FWL

RELATIVE COORDINATES - From top hole to bottom hole

WELL	NORTH	EAST	WELL	NORTH	EAST	WELL	NORTH	EAST
23-16B1	1514'	-1428'	26-1B	222'	-1213'	24-13D2	483'	304'
23-16D	777'	-1072'	26-1D	-502'	-940'	24-14A1	1615'	1551'
23-16B2	1219'	-1425'	26-8B1	-1072'	-1204'	24-14A2	1387'	1373'
23-16C1	522'	-1210'	24-13A1	1154'	135'	24-14A3	1125'	1312'
25-6D	-1651'	1557'	24-13D1	828'	105'	25-6B	-1047'	1185'
						25-3C	-436'	541'

LATITUDE & LONGITUDE Surface position of Wells (NAD 83)

WELL	LATITUDE	LONGITUDE
23-16B1	39° 25' 22.83"	107° 43' 50.82"
23-16D	39° 25' 22.72"	107° 43' 50.86"
23-16B2	39° 25' 22.68"	107° 43' 50.73"
23-16C1	39° 25' 22.57"	107° 43' 50.77"
25-6D	39° 25' 22.53"	107° 43' 50.64"
26-1B	39° 25' 22.42"	107° 43' 50.68"
26-1D	39° 25' 22.38"	107° 43' 50.55"
26-8B1	39° 25' 22.27"	107° 43' 50.59"
24-13A1	39° 25' 24.15"	107° 43' 48.32"
24-13D1	39° 25' 24.11"	107° 43' 48.18"
24-13D2	39° 25' 24.00"	107° 43' 48.23"
24-14A1	39° 25' 23.96"	107° 43' 48.09"
24-14A2	39° 25' 23.85"	107° 43' 48.14"
24-14A3	39° 25' 23.80"	107° 43' 48.00"
25-6B	39° 25' 23.69"	107° 43' 48.05"
25-3C	39° 25' 23.65"	107° 43' 47.91"
Exist. 26-1C	39° 25' 23.74"	107° 43' 49.48"
Exist. 26-8C	39° 25' 23.24"	107° 43' 49.65"
Exist. 25-3D	39° 25' 23.06"	107° 43' 49.55"

LATITUDE & LONGITUDE Bottom hole position of Wells (NAD 83)

WELL	LATITUDE	LONGITUDE
23-16B1	39° 25' 37.80"	107° 44' 08.99"
23-16D	39° 25' 30.41"	107° 44' 04.51"
23-16B2	39° 25' 34.74"	107° 44' 08.87"
23-16C1	39° 25' 27.73"	107° 44' 06.18"
25-6D	39° 25' 06.21"	107° 43' 30.82"
26-1B	39° 25' 24.62"	107° 44' 06.13"
26-1D	39° 25' 17.42"	107° 44' 02.52"
26-8B1	39° 25' 11.68"	107° 44' 05.93"
24-13A1	39° 25' 35.55"	107° 43' 46.59"
24-13D1	39° 25' 32.29"	107° 43' 46.84"
24-13D2	39° 25' 28.77"	107° 43' 44.35"
24-14A1	39° 25' 39.90"	107° 43' 28.32"
24-14A2	39° 25' 37.54"	107° 43' 30.63"
24-14A3	39° 25' 34.91"	107° 43' 31.28"
25-6B	39° 25' 13.34"	107° 43' 32.96"
25-3C	39° 25' 19.34"	107° 43' 41.02"

SURVEYED BY: C.D.S. DATE SURVEYED: 07-08-10
DRAWN BY: F.T.M. DATE DRAWN: 07-29-10
SCALE: 1" = 100' REVISED:

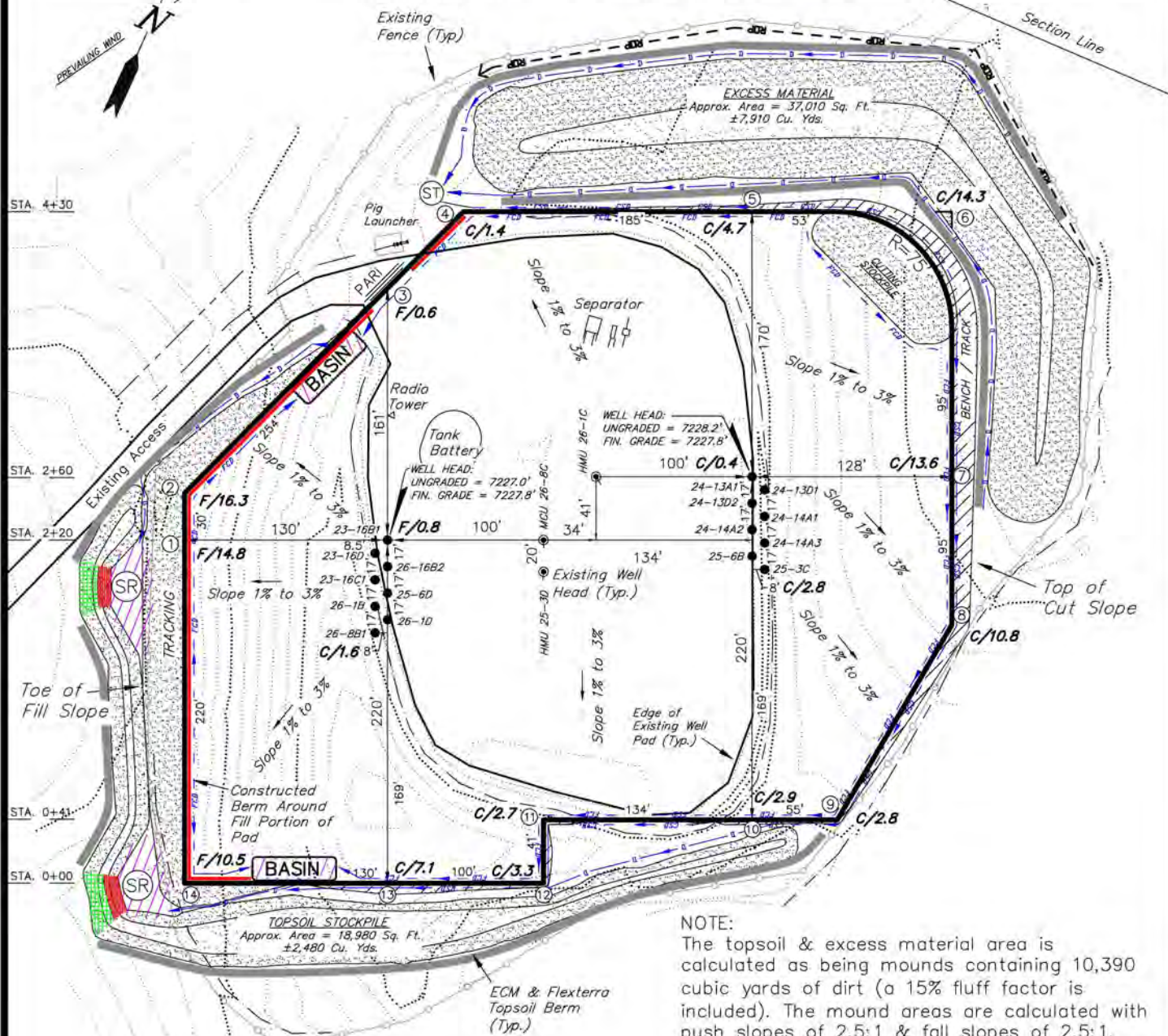
Tri State
Land Surveying, Inc.
180 NORTH VERNAL AVE. VERNAL, UTAH 84078
(435) 781-2501

SHEET
3b
OF 11

ENCANA OIL & GAS (USA) INC

CONSTRUCTION LAYOUT DRAWING CUT SHEET

WELL PAD (D25W) EXPANSION Section 25, T7S, R93W, 6th P.M.



NOTES:

- (1) Slope Track and/or Terrace All Slopes and Piles
- (2) Erosion Control & Seed Topsoil Stockpile
- (3) Erosion Control & Seed Outside Slopes of Stockpiles
- (4) Slope away from Substructure Areas 1% to 3% to Flow Control Ditch on Entire Pad
- (5) When Possible the Cut and Fill Slopes Directly Behind the Proposed Production Equipment Should be Reclaimed with 3:1 Slopes and Topsoil Spread During Pad Construction.
- (6) BMP Selection and Position may Change Depending on Actual Conditions Encountered During the Construction Process.
- (7) All CMP's Shall have Inlet and Outlet Protection.
- (8) All BMP's to be constructed to Encana Oil & Gas (USA) Inc. BMP Manual's Specifications

NOTE:

The topsoil & excess material area is calculated as being mounds containing 10,390 cubic yards of dirt (a 15% fluff factor is included). The mound areas are calculated with push slopes of 2.5:1 & fall slopes of 2.5:1.

LEGEND:

- PARI = PAD/ACCESS ROAD INTERFACE
- SR = SEDIMENT RESERVOIR
- ST = SEDIMENT TRAP
- R.O.P. = RUN-ON PROTECTION
- = PERIMETER CONTROL (WATTLES)
- CDM = CHECK DAM
- FCD = FLOW CONTROL DITCH
- ECB = EROSION CONTROL BLANKET
- D = FILL DIVERSION TO SEDIMENT TRAP
- CSD = CUT SLOPE DIVERSION (BERM TOE OF CUT SLOPE)
- VGB = VEGETATION BUFFER (UNDISTURBED LAND INSIDE PC)
- = SEED, ECB & FLEX
- = LEVEL SPREADER

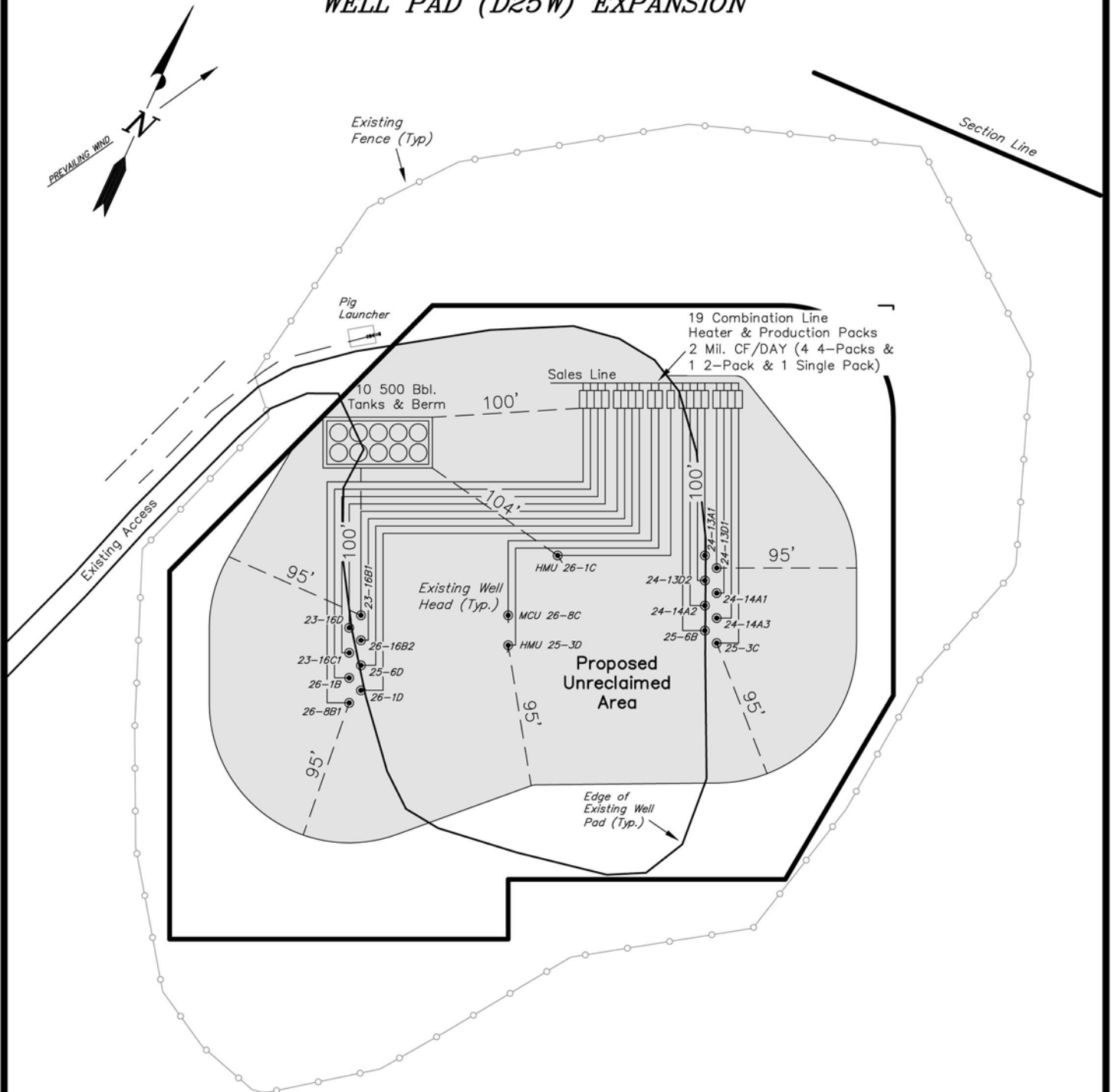
SURVEYED BY: C.D.S.	DATE SURVEYED: 07-08-10
DRAWN BY: F.T.M.	DATE DRAWN: 07-30-10
SCALE: 1" = 100'	REVISED:

Tri State
Land Surveying, Inc.
180 NORTH VERNAL AVE. VERNAL, UTAH 84078
(435) 781-2501

SHEET
4
OF 11

ENCANA OIL & GAS (USA) INC

PRODUCTION SCHEMATIC WELL PAD (D25W) EXPANSION



Notes:

1. Reclaimed area to include seeding of approved vegetation and sufficient storm water management system.
2. Reclaimed Pad to have storm water Management BMP's Per Encana Oil & Gas (USA) Inc. BMP Manual.
3. Actual Equipment Layout and Reclaimed Pad Surface Area May Change do to Production Requirements or Site Conditions.

DISTURBED AREA:

TOTAL DISTURBED AREA = 7.14 ACRES
TOTAL RECLAIMED AREA = 4.41 ACRES
UNRECLAIMED AREA = 2.73 ACRES

SURVEYED BY: C.D.S.	DATE SURVEYED: 07-08-10
DRAWN BY: F.T.M.	DATE DRAWN: 07-30-10
SCALE: 1" = 100'	REVISED:

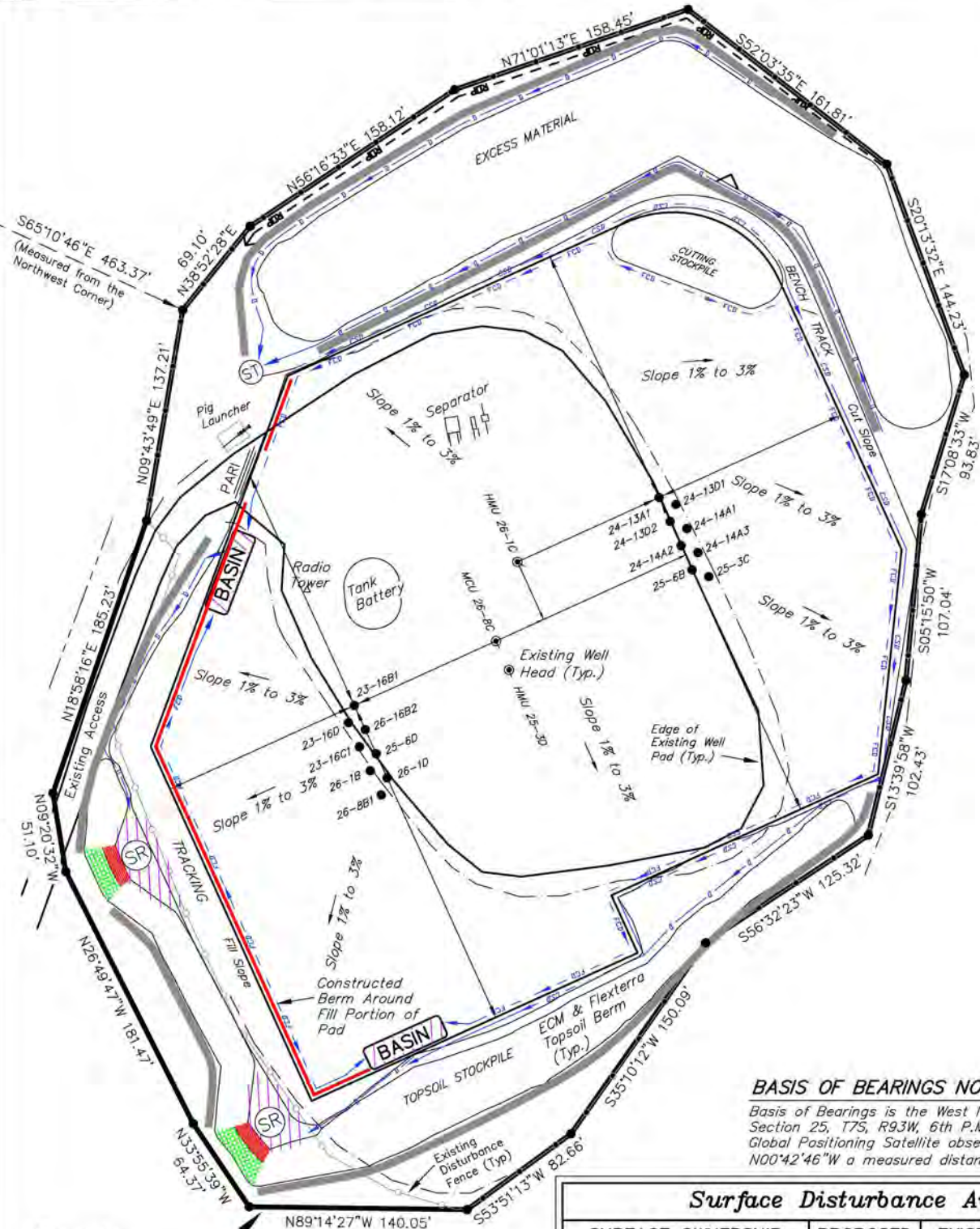
Tri State
Land Surveying, Inc.
180 NORTH VERNAL AVE. VERNAL, UTAH 84078
(435) 781-2501

SHEET
7
OF 11

ENCANA OIL & GAS (USA) INC

SURFACE DISTURBANCE AREA WELL PAD (D25W) EXPANSION Section 25, T7S, R93W, 6th P.M.

Section Line



BASIS OF BEARINGS NOTE:

Basis of Bearings is the West line of the NW 1/4 of Section 25, T7S, R93W, 6th P.M. which is taken from Global Positioning Satellite observations to bear N00°42'46\"W a measured distance of 2546.14'.

Surface Disturbance Area

SURFACE OWNERSHIP	PROPOSED	EXISTING	TOTAL
Section 28	0.54 Acres	6.60 Acres	7.14 Acres
TOTAL PAD DISTURBANCE	0.54 Acres	6.60 Acres	7.14 Acres

SURVEYED BY: C.D.S. DATE SURVEYED: 07-08-10
 DRAWN BY: F.T.M. DATE DRAWN: 07-30-10
 SCALE: 1" = 100' REVISED:

Tri State (435) 781-2501
 Land Surveying, Inc.
 180 NORTH VERNAL AVE. VERNAL, UTAH 84078

SHEET
 8
 OF 11