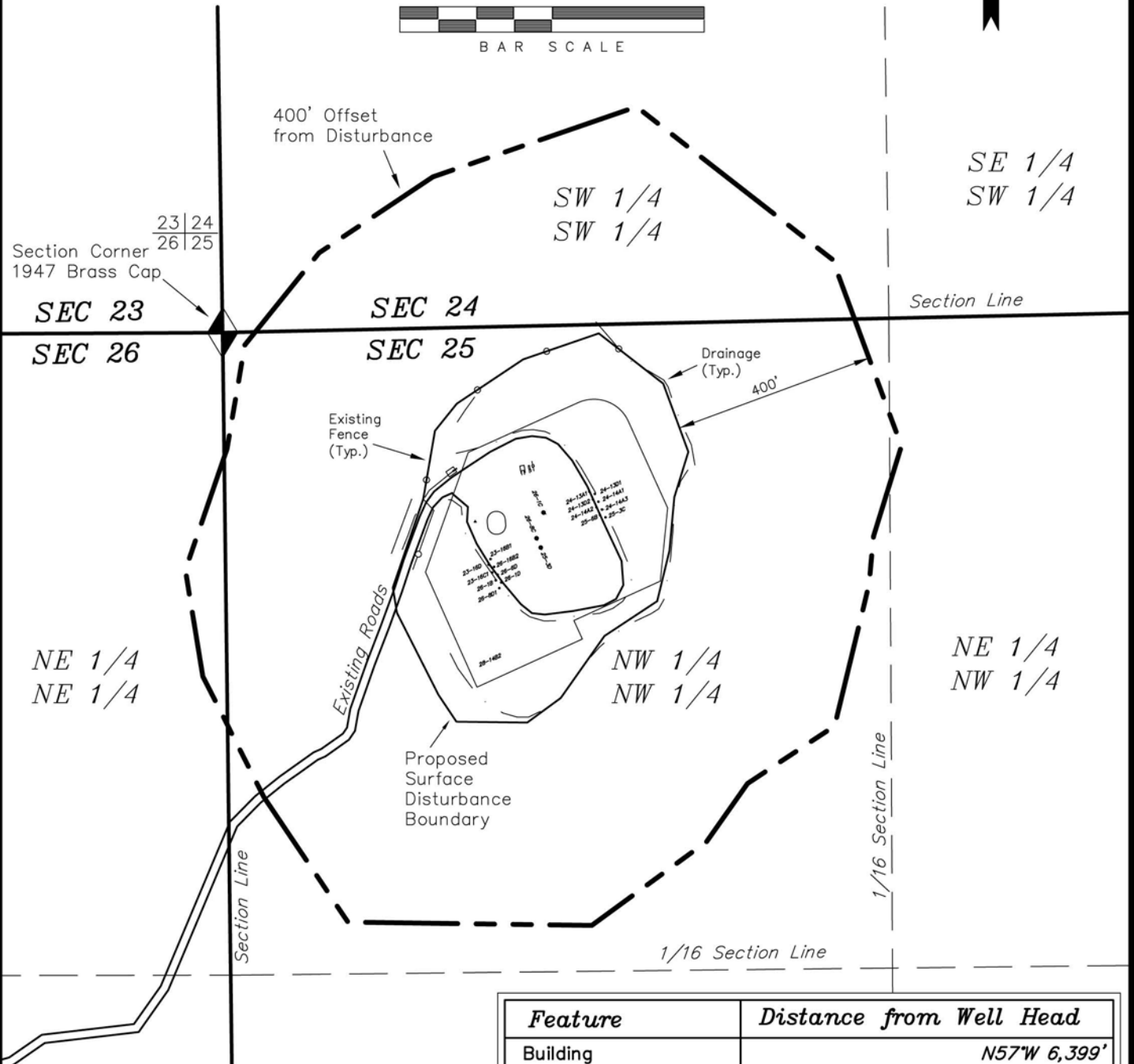
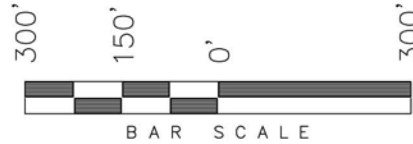


# ENCANA OIL & GAS (USA) INC

## LOCATION DRAWING ADDENDUM TO LEGAL PLATS WELL PAD (D25W) EXPANSION Section 25, T7S, R93W, 6th P.M.



SURFACE USE NOTE:  
Surface use of the well site is  
grazing. Vegetation consists mainly  
of Cedar Trees, Sage Brush &  
Native Grasses.

| Feature              | Distance from Well Head |
|----------------------|-------------------------|
| Building             | N57°W 6,399'            |
| Above Ground Utility | N57°W 6,399'            |
| Public Road          | S48°E 4,257'            |
| Railroad             | N42°W 8.8 Miles         |

SURVEYED BY: C.D.S. DATE SURVEYED: 07-08-10  
DRAWN BY: F.T.M. DATE DRAWN: 07-30-10  
SCALE: 1" = 300' REVISED:

**Tri State**  
Land Surveying, Inc.  
180 NORTH VERNAL AVE. VERNAL, UTAH 84078  
(435) 781-2501

SHEET  
2q  
OF 11