

# **BILL BARRETT CORP**

**GARFIELD COUNTY, COLORADO NAD 1983**

**Circle B Tract #5 Pad**

**CBS 32D-21-692**

**Wellbore #1**

**Plan: Design #1**

## **Standard Planning Report**

**08 June, 2010**

# BBC

## Planning Report

<b>Database:</b>	Compass	<b>Local Co-ordinate Reference:</b>	Well CBS 32D-21-692
<b>Company:</b>	BILL BARRETT CORP	<b>TVD Reference:</b>	WELL @ 0.00ft (Original Well Elev)
<b>Project:</b>	GARFIELD COUNTY, COLORADO NAD 1983	<b>MD Reference:</b>	WELL @ 0.00ft (Original Well Elev)
<b>Site:</b>	Circle B Tract #5 Pad	<b>North Reference:</b>	True
<b>Well:</b>	CBS 32D-21-692	<b>Survey Calculation Method:</b>	Minimum Curvature
<b>Wellbore:</b>	Wellbore #1		
<b>Design:</b>	Design #1		

<b>Project</b>	GARFIELD COUNTY, COLORADO NAD 1983		
<b>Map System:</b>	US State Plane 1983	<b>System Datum:</b>	Mean Sea Level
<b>Geo Datum:</b>	North American Datum 1983		
<b>Map Zone:</b>	Colorado Central Zone		

Site						Circle B Tract #5 Pad							
Site Position: From: Position Uncertainty:			Lat/Long  0.00 ft			Northing:		1,619,626.425 ft		Latitude:		39° 30' 52.412 N	
						Easting:		2,387,502.827 ft		Longitude:		107° 40' 16.3632 W	
						Slot Radius:		"		Grid Convergence:		-1.37 °	

Well		CBS 32D-21-692				
Well Position	+N/-S	16.02 ft	Northing:	1,619,643.921 ft	Latitude:	39° 30' 52.571 N
	+E/-W	-62.07 ft	Easting:	2,387,441.159 ft	Longitude:	107° 40' 17.1552 W
Position Uncertainty		0.00 ft	Wellhead Elevation:	ft	Ground Level:	0.00 ft

<b>Wellbore</b>	Wellbore #1				
<b>Magnetics</b>	<b>Model Name</b>	<b>Sample Date</b>	<b>Declination (°)</b>	<b>Dip Angle (°)</b>	<b>Field Strength (nT)</b>
	BGGM2007	6/7/2010	10.40	65.82	52,428

<b>Design</b>	Design #1			
<b>Audit Notes:</b>				
<b>Version:</b>	<b>Phase:</b>	PROTOTYPE	<b>Tie On Depth:</b>	0.00
<b>Vertical Section:</b>	<b>Depth From (TVD) (ft)</b>	<b>+N/-S (ft)</b>	<b>+E/-W (ft)</b>	<b>Direction (°)</b>
	0.00	0.00	0.00	60.10

<b>Plan Sections</b>										
Measured Depth (ft)	Inclination (°)	Azimuth (°)	Vertical Depth (ft)	+N/-S (ft)	+E/-W (ft)	Dogleg Rate (°/100ft)	Build Rate (°/100ft)	Turn Rate (°/100ft)	TFO (°)	Target
0.00	0.00	0.00	0.00	0.00	0.00	0.00	0.00	0.00	0.00	
780.00	0.00	0.00	780.00	0.00	0.00	0.00	0.00	0.00	0.00	
1,121.31	8.53	60.10	1,120.05	12.65	21.99	2.50	2.50	0.00	60.10	
5,142.01	8.53	60.10	5,096.24	310.04	539.16	0.00	0.00	0.00	0.00	
5,710.87	0.00	0.00	5,663.00	331.11	575.81	1.50	-1.50	0.00	180.00	
7,710.87	0.00	0.00	7,663.00	331.11	575.81	0.00	0.00	0.00	0.00	CBS 32D-21-692 TI

# BBC

## Planning Report

<b>Database:</b>	Compass	<b>Local Co-ordinate Reference:</b>	Well CBS 32D-21-692
<b>Company:</b>	BILL BARRETT CORP	<b>TVD Reference:</b>	WELL @ 0.00ft (Original Well Elev)
<b>Project:</b>	GARFIELD COUNTY, COLORADO NAD 1983	<b>MD Reference:</b>	WELL @ 0.00ft (Original Well Elev)
<b>Site:</b>	Circle B Tract #5 Pad	<b>North Reference:</b>	True
<b>Well:</b>	CBS 32D-21-692	<b>Survey Calculation Method:</b>	Minimum Curvature
<b>Wellbore:</b>	Wellbore #1		
<b>Design:</b>	Design #1		

Planned Survey									
Measured Depth (ft)	Inclination (°)	Azimuth (°)	Vertical Depth (ft)	+N/-S (ft)	+E/-W (ft)	Vertical Section (ft)	Dogleg Rate (°/100ft)	Build Rate (°/100ft)	Turn Rate (°/100ft)
0.00	0.00	0.00	0.00	0.00	0.00	0.00	0.00	0.00	0.00
100.00	0.00	0.00	100.00	0.00	0.00	0.00	0.00	0.00	0.00
200.00	0.00	0.00	200.00	0.00	0.00	0.00	0.00	0.00	0.00
300.00	0.00	0.00	300.00	0.00	0.00	0.00	0.00	0.00	0.00
400.00	0.00	0.00	400.00	0.00	0.00	0.00	0.00	0.00	0.00
500.00	0.00	0.00	500.00	0.00	0.00	0.00	0.00	0.00	0.00
600.00	0.00	0.00	600.00	0.00	0.00	0.00	0.00	0.00	0.00
700.00	0.00	0.00	700.00	0.00	0.00	0.00	0.00	0.00	0.00
780.00	0.00	0.00	780.00	0.00	0.00	0.00	0.00	0.00	0.00
9 5/8"									
800.00	0.50	60.10	800.00	0.04	0.08	0.09	2.50	2.50	0.00
900.00	3.00	60.10	899.95	1.57	2.72	3.14	2.50	2.50	0.00
1,000.00	5.50	60.10	999.66	5.26	9.15	10.55	2.50	2.50	0.00
1,100.00	8.00	60.10	1,098.96	11.12	19.34	22.30	2.50	2.50	0.00
1,121.31	8.53	60.10	1,120.05	12.65	21.99	25.37	2.50	2.50	0.00
1,200.00	8.53	60.10	1,197.87	18.47	32.11	37.04	0.00	0.00	0.00
1,300.00	8.53	60.10	1,296.76	25.86	44.98	51.88	0.00	0.00	0.00
1,400.00	8.53	60.10	1,395.65	33.26	57.84	66.72	0.00	0.00	0.00
1,500.00	8.53	60.10	1,494.55	40.66	70.70	81.56	0.00	0.00	0.00
1,600.00	8.53	60.10	1,593.44	48.05	83.56	96.39	0.00	0.00	0.00
1,700.00	8.53	60.10	1,692.33	55.45	96.43	111.23	0.00	0.00	0.00
1,800.00	8.53	60.10	1,791.23	62.84	109.29	126.07	0.00	0.00	0.00
1,900.00	8.53	60.10	1,890.12	70.24	122.15	140.91	0.00	0.00	0.00
2,000.00	8.53	60.10	1,989.01	77.64	135.01	155.74	0.00	0.00	0.00
2,100.00	8.53	60.10	2,087.91	85.03	147.88	170.58	0.00	0.00	0.00
2,200.00	8.53	60.10	2,186.80	92.43	160.74	185.42	0.00	0.00	0.00
2,300.00	8.53	60.10	2,285.69	99.83	173.60	200.26	0.00	0.00	0.00
2,400.00	8.53	60.10	2,384.59	107.22	186.46	215.10	0.00	0.00	0.00
2,500.00	8.53	60.10	2,483.48	114.62	199.33	229.93	0.00	0.00	0.00
2,600.00	8.53	60.10	2,582.37	122.02	212.19	244.77	0.00	0.00	0.00
2,700.00	8.53	60.10	2,681.27	129.41	225.05	259.61	0.00	0.00	0.00
2,800.00	8.53	60.10	2,780.16	136.81	237.92	274.45	0.00	0.00	0.00
2,900.00	8.53	60.10	2,879.05	144.21	250.78	289.28	0.00	0.00	0.00
3,000.00	8.53	60.10	2,977.94	151.60	263.64	304.12	0.00	0.00	0.00
3,100.00	8.53	60.10	3,076.84	159.00	276.50	318.96	0.00	0.00	0.00
3,200.00	8.53	60.10	3,175.73	166.40	289.37	333.80	0.00	0.00	0.00
3,300.00	8.53	60.10	3,274.62	173.79	302.23	348.63	0.00	0.00	0.00
3,400.00	8.53	60.10	3,373.52	181.19	315.09	363.47	0.00	0.00	0.00
3,500.00	8.53	60.10	3,472.41	188.58	327.95	378.31	0.00	0.00	0.00
3,600.00	8.53	60.10	3,571.30	195.98	340.82	393.15	0.00	0.00	0.00
3,697.78	8.53	60.10	3,668.00	203.21	353.39	407.65	0.00	0.00	0.00
Mesaverde									
3,700.00	8.53	60.10	3,670.20	203.38	353.68	407.98	0.00	0.00	0.00
3,800.00	8.53	60.10	3,769.09	210.77	366.54	422.82	0.00	0.00	0.00
3,900.00	8.53	60.10	3,867.98	218.17	379.40	437.66	0.00	0.00	0.00
4,000.00	8.53	60.10	3,966.88	225.57	392.27	452.50	0.00	0.00	0.00
4,100.00	8.53	60.10	4,065.77	232.96	405.13	467.34	0.00	0.00	0.00
4,200.00	8.53	60.10	4,164.66	240.36	417.99	482.17	0.00	0.00	0.00
4,300.00	8.53	60.10	4,263.55	247.76	430.86	497.01	0.00	0.00	0.00
4,400.00	8.53	60.10	4,362.45	255.15	443.72	511.85	0.00	0.00	0.00
4,500.00	8.53	60.10	4,461.34	262.55	456.58	526.69	0.00	0.00	0.00
4,600.00	8.53	60.10	4,560.23	269.95	469.44	541.52	0.00	0.00	0.00
4,623.02	8.53	60.10	4,583.00	271.65	472.40	544.94	0.00	0.00	0.00

# BBC

## Planning Report

<b>Database:</b>	Compass	<b>Local Co-ordinate Reference:</b>	Well CBS 32D-21-692
<b>Company:</b>	BILL BARRETT CORP	<b>TVD Reference:</b>	WELL @ 0.00ft (Original Well Elev)
<b>Project:</b>	GARFIELD COUNTY, COLORADO NAD 1983	<b>MD Reference:</b>	WELL @ 0.00ft (Original Well Elev)
<b>Site:</b>	Circle B Tract #5 Pad	<b>North Reference:</b>	True
<b>Well:</b>	CBS 32D-21-692	<b>Survey Calculation Method:</b>	Minimum Curvature
<b>Wellbore:</b>	Wellbore #1		
<b>Design:</b>	Design #1		

### Planned Survey

Measured Depth (ft)	Inclination (°)	Azimuth (°)	Vertical Depth (ft)	+N/-S (ft)	+E/-W (ft)	Vertical Section (ft)	Dogleg Rate (°/100ft)	Build Rate (°/100ft)	Turn Rate (°/100ft)
<b>Price Coal</b>									
4,700.00	8.53	60.10	4,659.13	277.34	482.31	556.36	0.00	0.00	0.00
4,800.00	8.53	60.10	4,758.02	284.74	495.17	571.20	0.00	0.00	0.00
4,900.00	8.53	60.10	4,856.91	292.13	508.03	586.04	0.00	0.00	0.00
5,000.00	8.53	60.10	4,955.81	299.53	520.89	600.87	0.00	0.00	0.00
5,100.00	8.53	60.10	5,054.70	306.93	533.76	615.71	0.00	0.00	0.00
5,142.01	8.53	60.10	5,096.24	310.04	539.16	621.94	0.00	0.00	0.00
5,200.00	7.66	60.10	5,153.66	314.11	546.24	630.11	1.50	-1.50	0.00
5,300.00	6.16	60.10	5,252.93	320.11	556.68	642.15	1.50	-1.50	0.00
5,390.49	4.81	60.10	5,343.00	324.42	564.17	650.80	1.50	-1.50	0.00
<b>Top Gas</b>									
5,400.00	4.66	60.10	5,352.48	324.81	564.85	651.58	1.50	-1.50	0.00
5,500.00	3.16	60.10	5,452.24	328.21	570.77	658.41	1.50	-1.50	0.00
5,600.00	1.66	60.10	5,552.15	330.31	574.42	662.62	1.50	-1.50	0.00
5,700.00	0.16	60.10	5,652.13	331.10	575.80	664.21	1.50	-1.50	0.00
5,710.87	0.00	0.00	5,663.00	331.11	575.81	664.23	1.50	-1.50	0.00
5,800.00	0.00	0.00	5,752.13	331.11	575.81	664.23	0.00	0.00	0.00
5,900.00	0.00	0.00	5,852.13	331.11	575.81	664.23	0.00	0.00	0.00
6,000.00	0.00	0.00	5,952.13	331.11	575.81	664.23	0.00	0.00	0.00
6,100.00	0.00	0.00	6,052.13	331.11	575.81	664.23	0.00	0.00	0.00
6,200.00	0.00	0.00	6,152.13	331.11	575.81	664.23	0.00	0.00	0.00
6,300.00	0.00	0.00	6,252.13	331.11	575.81	664.23	0.00	0.00	0.00
6,400.00	0.00	0.00	6,352.13	331.11	575.81	664.23	0.00	0.00	0.00
6,500.00	0.00	0.00	6,452.13	331.11	575.81	664.23	0.00	0.00	0.00
6,600.00	0.00	0.00	6,552.13	331.11	575.81	664.23	0.00	0.00	0.00
6,700.00	0.00	0.00	6,652.13	331.11	575.81	664.23	0.00	0.00	0.00
6,800.00	0.00	0.00	6,752.13	331.11	575.81	664.23	0.00	0.00	0.00
6,900.00	0.00	0.00	6,852.13	331.11	575.81	664.23	0.00	0.00	0.00
7,000.00	0.00	0.00	6,952.13	331.11	575.81	664.23	0.00	0.00	0.00
7,100.00	0.00	0.00	7,052.13	331.11	575.81	664.23	0.00	0.00	0.00
7,200.00	0.00	0.00	7,152.13	331.11	575.81	664.23	0.00	0.00	0.00
7,300.00	0.00	0.00	7,252.13	331.11	575.81	664.23	0.00	0.00	0.00
7,400.00	0.00	0.00	7,352.13	331.11	575.81	664.23	0.00	0.00	0.00
7,410.87	0.00	0.00	7,363.00	331.11	575.81	664.23	0.00	0.00	0.00
<b>Rollins</b>									
7,500.00	0.00	0.00	7,452.13	331.11	575.81	664.23	0.00	0.00	0.00
7,600.00	0.00	0.00	7,552.13	331.11	575.81	664.23	0.00	0.00	0.00
7,700.00	0.00	0.00	7,652.13	331.11	575.81	664.23	0.00	0.00	0.00
7,710.87	0.00	0.00	7,663.00	331.11	575.81	664.23	0.00	0.00	0.00
<b>TD</b>									

### Casing Points

Measured Depth (ft)	Vertical Depth (ft)	Name	Casing Diameter (")	Hole Diameter (")
780.00	780.00	9 5/8"	9-5/8	12-1/4

# BBC

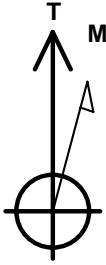
## Planning Report

<b>Database:</b>	Compass	<b>Local Co-ordinate Reference:</b>	Well CBS 32D-21-692
<b>Company:</b>	BILL BARRETT CORP	<b>TVD Reference:</b>	WELL @ 0.00ft (Original Well Elev)
<b>Project:</b>	GARFIELD COUNTY, COLORADO NAD 1983	<b>MD Reference:</b>	WELL @ 0.00ft (Original Well Elev)
<b>Site:</b>	Circle B Tract #5 Pad	<b>North Reference:</b>	True
<b>Well:</b>	CBS 32D-21-692	<b>Survey Calculation Method:</b>	Minimum Curvature
<b>Wellbore:</b>	Wellbore #1		
<b>Design:</b>	Design #1		

Formations						
Measured Depth (ft)	Vertical Depth (ft)	Name	Lithology	Dip (°)	Dip Direction (°)	
3,697.78	3,668.00	Mesaverde		0.00		
4,623.02	4,583.00	Price Coal		0.00		
5,390.49	5,343.00	Top Gas		0.00		
7,410.87	7,363.00	Rollins		0.00		
7,710.87	7,663.00	TD		0.00		

## WELL DETAILS: CBS 32D-21-692

Ground Level: 0.00  
 +N/-S+E/-W Northing Easting Latitude Longitude Slot  
 0.00 0.00 1619643.921 2387441.139 30° 52.577' N 101° 17.1552' W



Azimuths to True North  
 Magnetic North: 10.40°

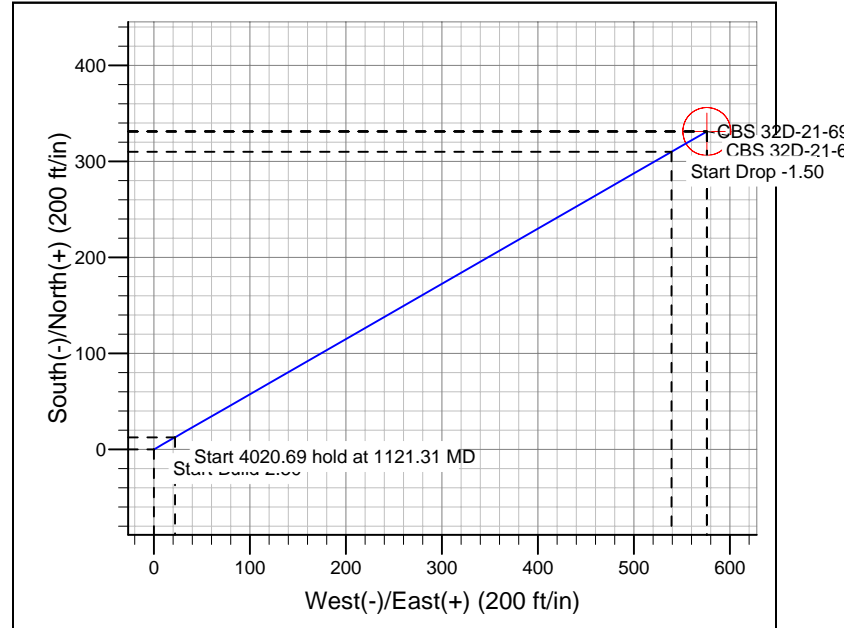
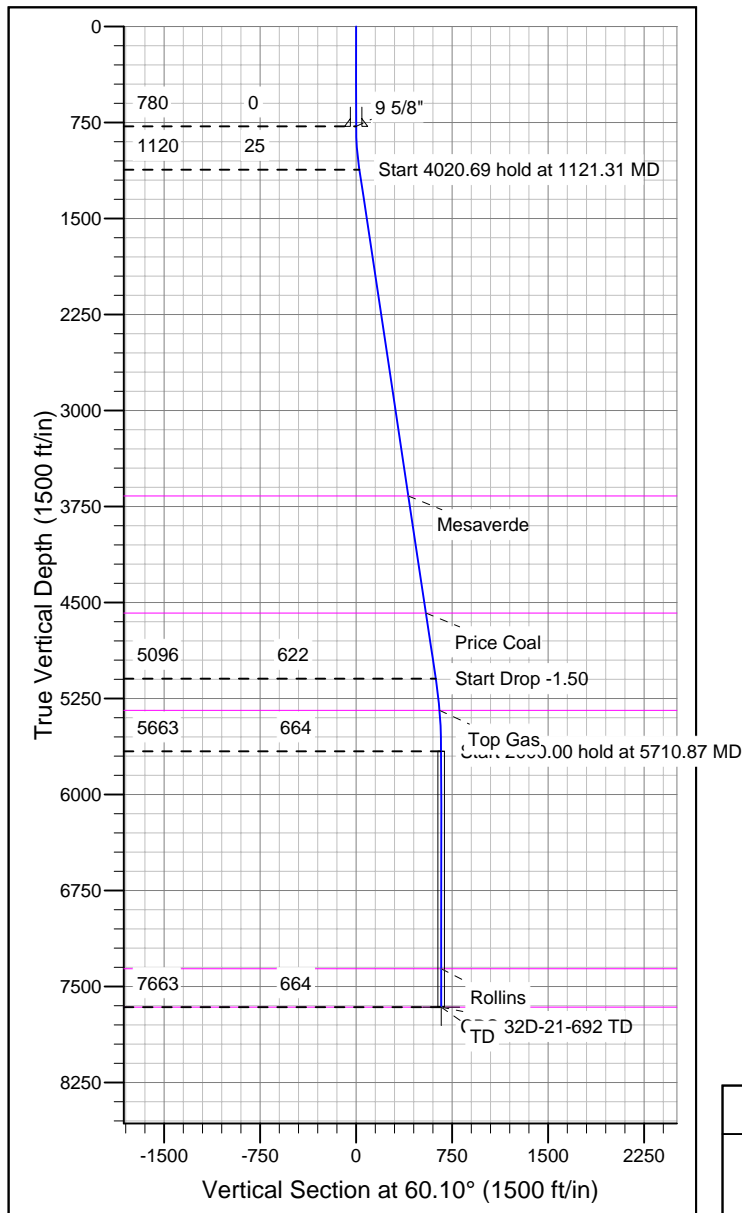
Magnetic Field  
 Strength: 52427.8snT  
 Dip Angle: 65.82°  
 Date: 6/7/2010  
 Model: BGGM2007

## SECTION DETAILS

Sec	MD	Inc	Azi	TVD	+N/-S	+E/-W	DLeg	TFace	VSec	Target
1	0.00	0.00	0.00	0.00	0.00	0.00	0.00	0.00	0.00	
2	780.00	0.00	0.00	780.00	0.00	0.00	0.00	0.00	0.00	
3	1121.31	8.53	60.10	1120.05	12.65	21.99	2.50	60.10	25.37	
4	142.01	8.53	60.10	5096.24	310.04	539.16	0.00	0.00	621.94	
5	110.87	0.00	0.00	5663.00	331.11	575.81	1.50	180.00	664.23	
6	110.87	0.00	0.00	7663.00	331.11	575.81	0.00	0.00	664.23	CBS 32D-21-692 TD

## WELLBORE TARGET DETAILS

Name	TVD	+N/-S	+E/-W	Shape
CBS 32D-21-692 TD	331.11	575.81	Circle (Radius: 25.00)	



## CASING DETAILS

TVD	MD	Name	Size
780.00	780.00	9 5/8"	9-5/8

## FORMATION TOP DETAILS

TVD	MD	Formation
3668.00	3697.78	Mesaverde
4583.00	4623.02	Price Coal
5343.00	5390.49	Top Gas
7363.00	7410.87	Rollins
7663.00	7710.87	TD

## REFERENCE INFORMATION

Co-ordinate (N/E) Reference: Well CBS 32D-21-692, True North  
 Vertical (TVD) Reference: WELL @ 0.00ft (Original Well Elev)  
 Section (VS) Reference: Slot - (0.00N, 0.00E)  
 Measured Depth Reference: WELL @ 0.00ft (Original Well Elev)  
 Calculation Method: Minimum Curvature