

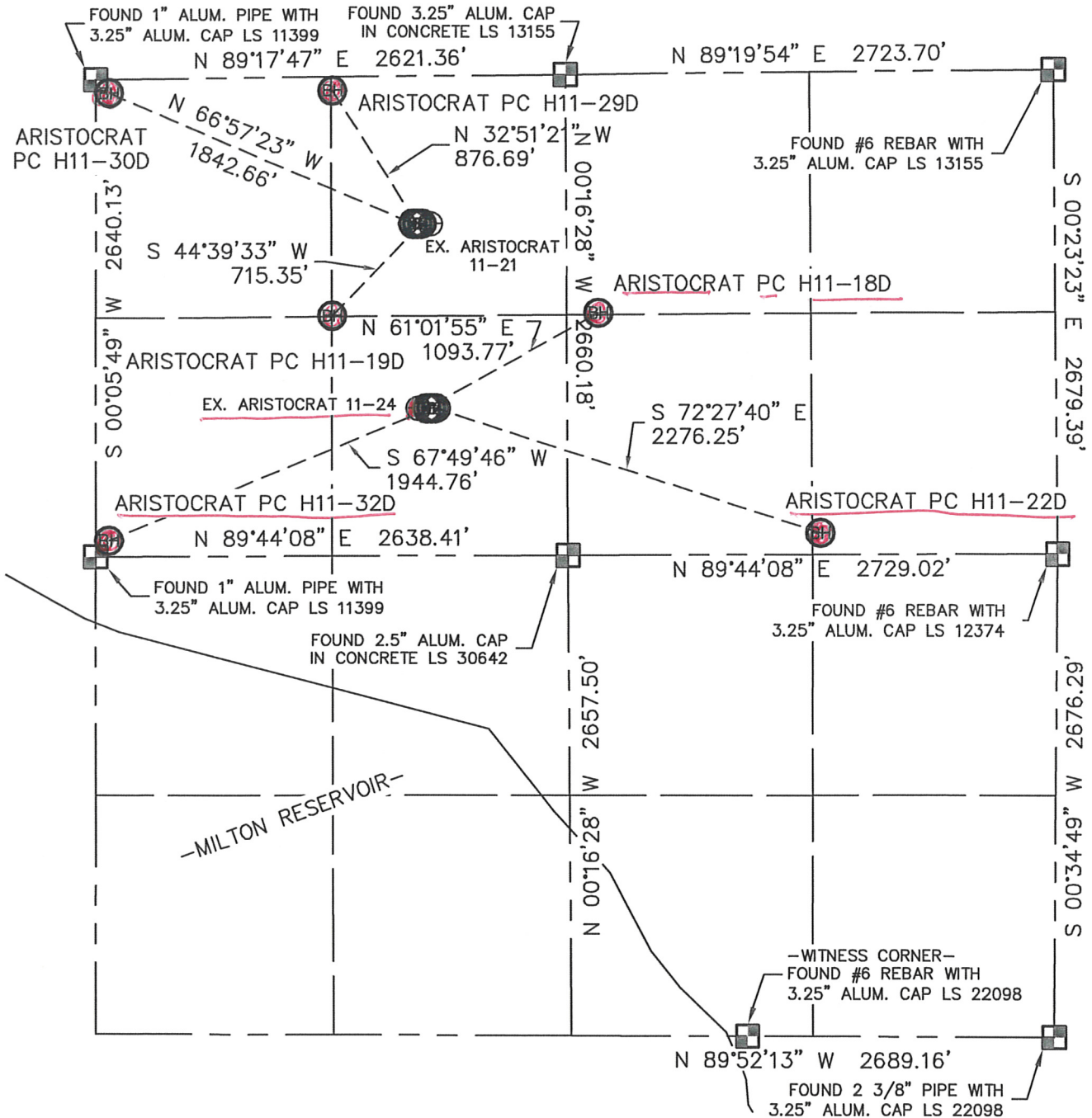
Multi-Well Plan

Lat40°, LLC 1635 Foxtrail Drive, Suite 325 Loveland, CO 80538

DIRECTIONAL LAYOUT

THIS MAP DOES NOT REPRESENT A BOUNDARY SURVEY

SECTION: 11
TOWNSHIP: 3N
RANGE: 65W

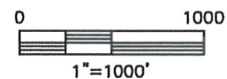


NOTE

According to Colorado law, you must commence any legal action based upon any defect in this drawing within three years after you discover such defect. In no event, may any action based upon any defect in this survey be commenced more than ten years after the date of the certificate shown hereon. (13-80-105 C.R.S.)

LEGEND

- = ALIQUOT MONUMENT AS DESCRIBED
- = CALCULATED POSITION



PROJECT#: 2010021

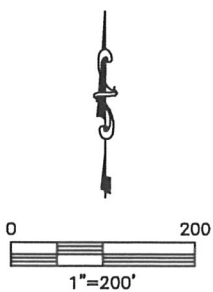
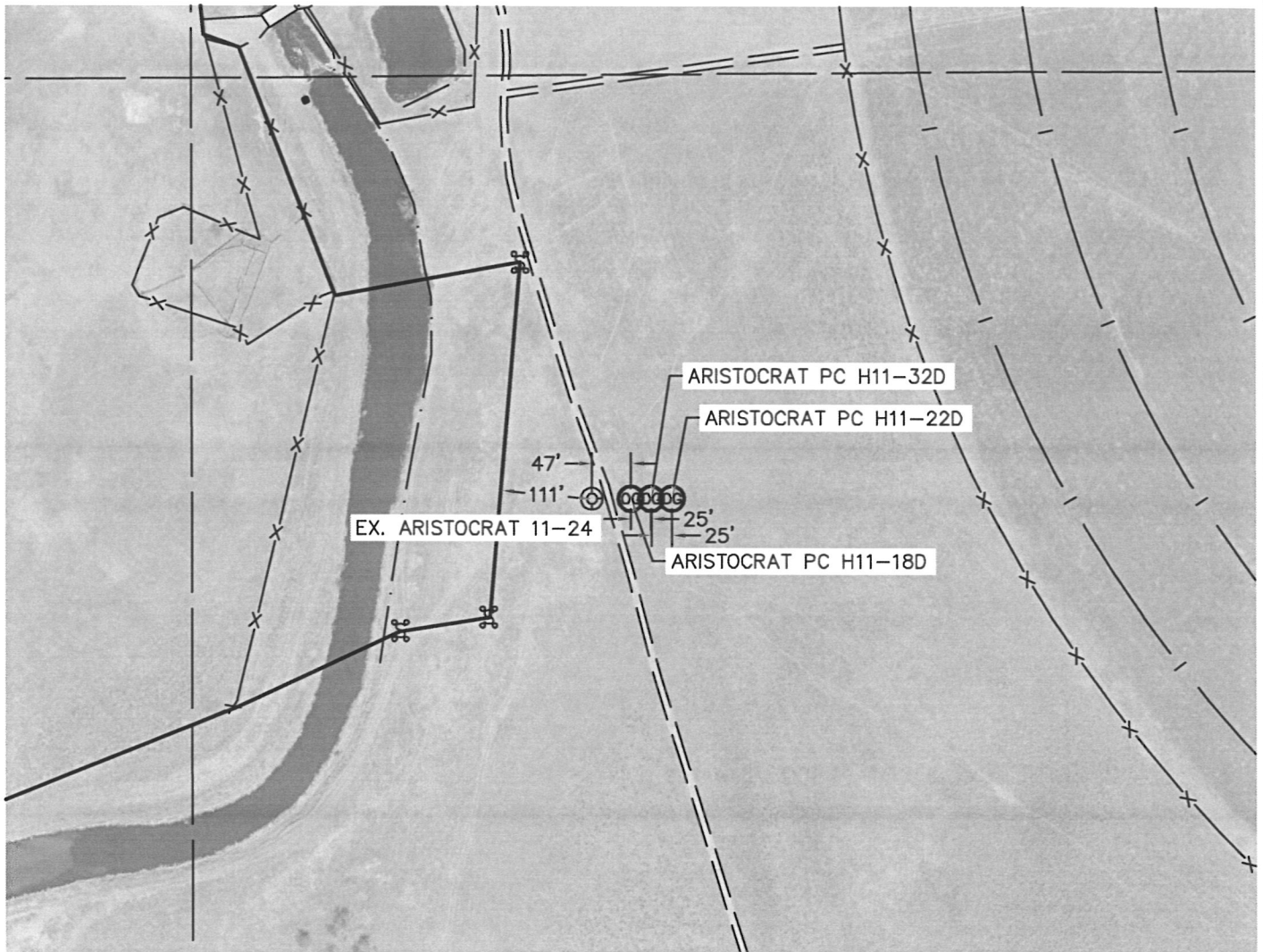
Lat40°, LLC

1635 Foxtrail Drive, Suite 325

Loveland, CO 80538

PAD LAYOUT

SECTION: 11
TOWNSHIP: 3N
RANGE: 65W



PROJECT#: 2010021