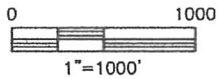
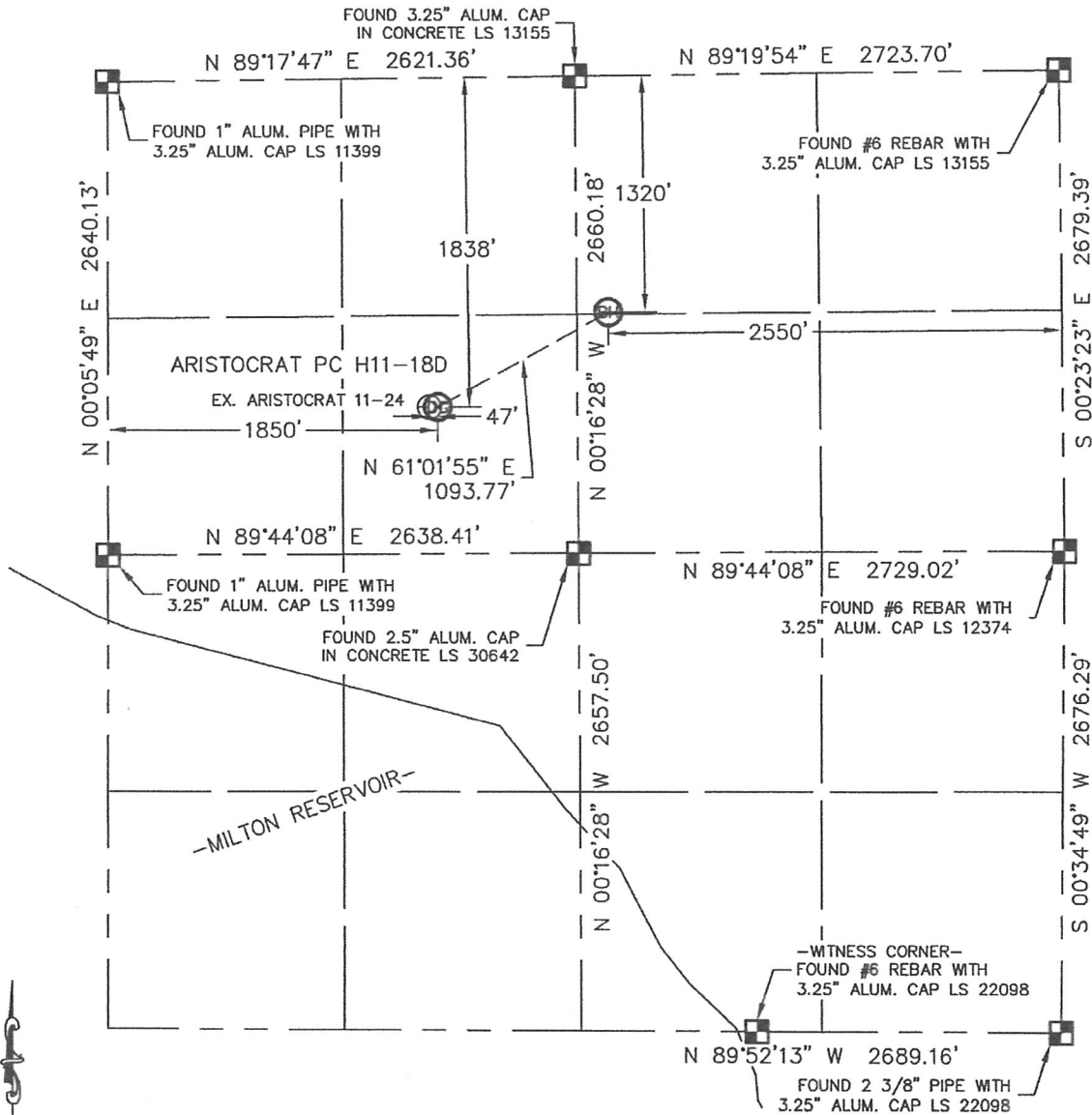


WELL LOCATION CERTIFICATE

THIS MAP DOES NOT REPRESENT A BOUNDARY SURVEY

SECTION: 11
TOWNSHIP: 3N
RANGE: 65W



In accordance with a request from Erik Van Decar with Noble Energy Inc., Lat40°, LLC has determined the surface location of the ARISTOCRAT PC H11-18D to be 1838' from the NORTH line and 1850' from the WEST line and the bottom hole to be 1320' from the NORTH line and 2550' from the EAST line as measured at right angles from the section line of Section 11, Township 3 North, Range 65 West of the Sixth Principal Meridian, County of Weld, State of Colorado. I hereby state that this Well Location Certificate was prepared by me, or under my direct supervision, that the fieldwork was completed on 5/18/10, for and on behalf of Noble Energy Inc. That this is not a Land Survey Plat or an Improvement Survey Plat, and that it is not to be relied upon for establishment of fence, building, or other future improvement lines.

NOTE:

- 1) Bearings shown are Grid Bearings of the Colorado State Plane Coordinate System, North Zone, North American Datum 1983/2007. The lineal dimensions as contained herein are based upon the "U.S. Survey Foot."
- 2) Ground elevations are based on an observed GPS elevation (NAVD 1988 DATUM).
- 3) NEAREST EXISTING WELL: ARISTOCRAT 11-24, 47'
- 4) IMPROVEMENTS: See VISIBLE IMPROVEMENTS exhibit for all visible improvements within 400' of disturbed area.
- 5) SURFACE USE: RANGELAND, EX. WELL SITE

SURFACE LOCATION
LATITUDE: 40.24207°N
LONGITUDE: 104.63325°W
PDOP: 1.0
ELEV: 4771'
1/4, 1/4: SE1/4NW1/4
NEAREST PROPERTY LINE: 158' WEST

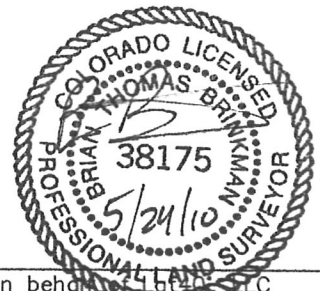
BOTTOM HOLE
LATITUDE: 40.24350°N
LONGITUDE: 104.62981°W

NOTE

According to Colorado law, you must commence any legal action based upon any defect in this W.L.C. within three years after you discover such defect. In no event, may any action based upon any defect in this survey be commenced more than ten years after the date of the certificate shown hereon. (13-80-105 C.R.S.)

LEGEND

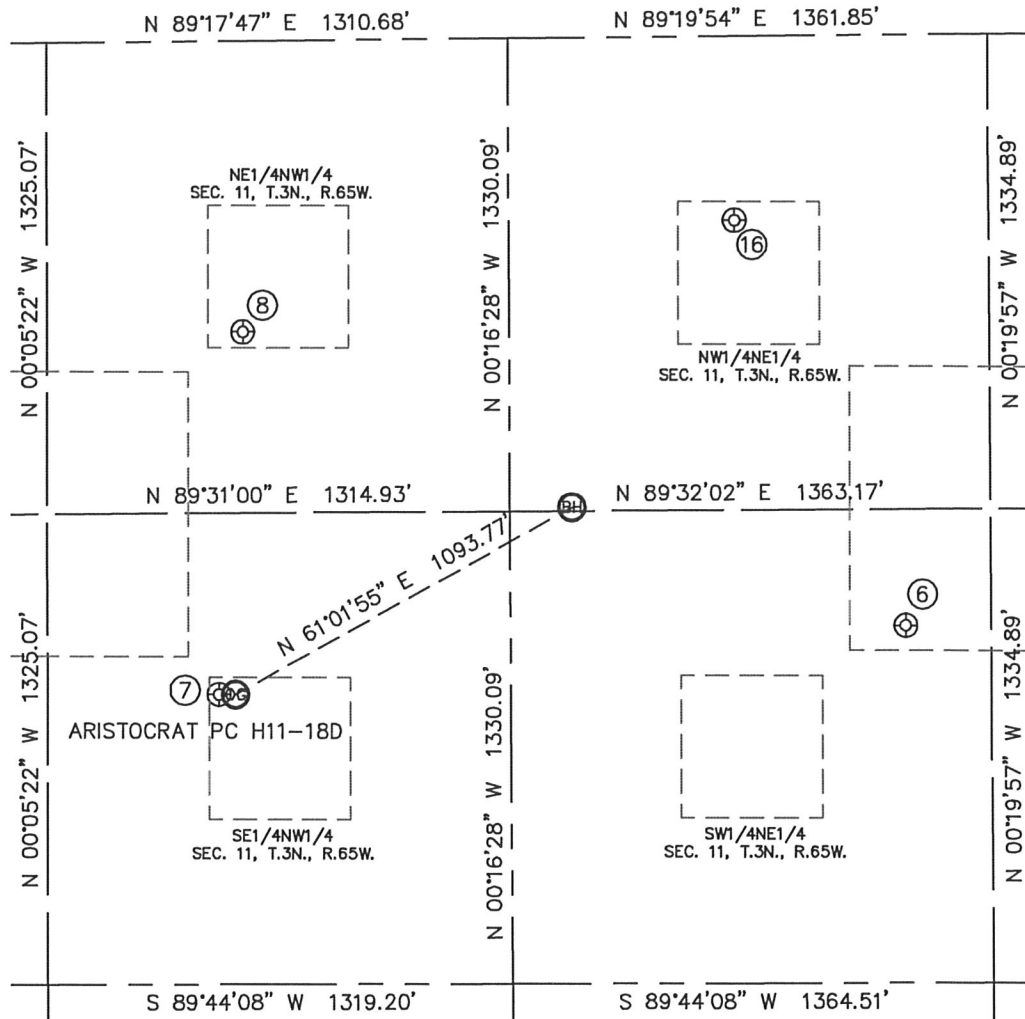
- = ALIQUOT MONUMENT AS DESCRIBED
 = CALCULATED POSITION



Brian T. Brinkman--On behalf of Lat40°, LLC
Colorado Licensed Professional
Land Surveyor No. 38175 PROJECT#: 2010021

SITE SKETCH

SECTION: 11
TOWNSHIP: 3N
RANGE: 65W



⑥

BEEBE DRAW 11-2
SW1/4NE1/4
1662' FNL
1605' FEL
LAT-40.24256°N
LONG-104.62643°W
PDOP:1.6
ELEV: 4811'

⑦

ARISTOCRAT 11-24
SE1/4NW1/4
1837' FNL
1803' FWL
LAT-40.24207°N
LONG-104.63342°W
PDOP:1.6
ELEV: 4769'

⑧

ARISTOCRAT 11-21
NE1/4NW1/4
818' FNL
1869' FWL
LAT-40.24487°N
LONG-104.63314°W
PDOP:1.6
ELEV: 4769'

⑬

BEEBE DRAW 11-1
NW1/4NE1/4
518' FNL
2084' FEL
LAT-40.24570°N
LONG-104.62813°W
PDOP:1.2
ELEV: 4808'

