

ANADARKO PETROLEUM CORP - EBUS  
DO NOT MAIL - PO BOX 4995  
THE WOODLANDS, Texas

Helen E. Karich Unit #1

**Basic**

## **Post Job Summary** **Squeeze Perfs**

Prepared for:	John Strahan
Date Prepared:	8/27/2010
Version: 1	

Service Supervisor: Justin Wheeler

Submitted by: Wes Aaron

**HALLIBURTON**

# HALLIBURTON

## Service Supervisor Reports

### Job Log

Date/Time	Chart #	Activity Code	Pump Rate	Cum Vol	Pump		Pressure (psig)	Comments
08/24/2010 12:00		Arrive At Loc						
08/24/2010 12:05		Safety Huddle						
08/24/2010 12:20		Safety Meeting						
08/24/2010 12:25		Start Job						
08/24/2010 12:25		Test Lines						TEST PUMPS AND LINES
08/24/2010 12:26		Pump Water	2	10			360.0	PUMP WATER SPACER
08/24/2010 12:31		Pump Cement	3	6.1			450.0	Mix and Pump 30 sks Cement @ 15.8 lb/gal
08/24/2010 12:34		Pump Displacement	3	14.4			380.0	Pump Fresh Water Displacement
08/24/2010 12:39		Shutdown						
08/24/2010 12:39		Other						POOH W/ Tubing, 10 stands
08/24/2010 12:54		Load Casing	2	2.5				
08/24/2010 12:57		Other						Close Pipe Rams, Begin squeeze
08/24/2010 12:57		Pressure Up	1					
08/24/2010 12:59		Shutdown		1.6			1500.0	
08/24/2010 13:01		Pressure Up	0.5				1000.0	
08/24/2010 13:02		Shutdown					1500.0	
08/24/2010 13:08		Pressure Up					1000.0	
08/24/2010 13:11		Shutdown	0.5				1500.0	
08/24/2010 13:17		Pressure Up					1000.0	
08/24/2010 13:18		Shutdown	0.5				1500.0	
08/24/2010 13:19		Release Tubing Pressure					.0	Bleed Pressure Slowly
08/24/2010 13:29		End Job						
08/24/2010 13:35		Safety Meeting - Pre Rig-Down						
08/24/2010 14:30		Safety Meeting - Departing Location						

*The Road to Excellence Starts with Safety*

<b>Sold To #:</b> 300466	<b>Ship To #:</b> 2800699	<b>Quote #:</b>	<b>Sales Order #:</b> 7591415
<b>Customer:</b> ANADARKO PETROLEUM CORP - EBUS		<b>Customer Rep:</b>	
<b>Well Name:</b> Helen E. Karich		<b>Well #:</b> Unit #1	<b>API/UWI #:</b> 05-123-07851-00
<b>Field:</b> WATTENBERG	<b>City (SAP):</b> PLATTEVILLE	<b>County/Parish:</b> Weld	<b>State:</b> Colorado
<b>Legal Description:</b> Section NENE32 Township 3N Range 66W			
<b>Lat:</b> N 40.185 deg. OR N 40 deg. 11 min. 7.548 secs.		<b>Long:</b> W 104.796 deg. OR W -105 deg. 12 min. 14.58 secs.	
<b>Contractor:</b> Basic		<b>Rig/Platform Name/Num:</b> .	
<b>Job Purpose:</b> Squeeze Perfs			
<b>Well Type:</b> Producing Well		<b>Job Type:</b> Squeeze Perfs	
<b>Sales Person:</b> FLING, MATTHEW		<b>Srvc Supervisor:</b> WHEELER, JUSTIN	<b>MBU ID Emp #:</b> 196470

**Job Personnel**

HES Emp Name	Exp Hrs	Emp #	HES Emp Name	Exp Hrs	Emp #	HES Emp Name	Exp Hrs	Emp #
Torres, Jess		TWS	WARD, SAMUEL Winfield		478713	WHEELER, JUSTIN W		196470
WILEY, JAMES A		440080	AARON, WESLEY		403606			

**Equipment**

HES Unit #	Distance-1 way	HES Unit #	Distance-1 way	HES Unit #	Distance-1 way	HES Unit #	Distance-1 way
10248053C	12 mile	10824253C	12 mile	10948694	12 mile		

**Job Hours**

Date	On Location Hours	Operating Hours	Date	On Location Hours	Operating Hours	Date	On Location Hours	Operating Hours
<b>TOTAL</b>								

Total is the sum of each column separately

**Job**

Formation Name	Top	Bottom	Called Out	Date	Time	Time Zone
Formation Depth (MD)				24 - Aug - 2010	00:00	MST
Form Type		BHST	On Location	24 - Aug - 2010	12:00	MST
Job depth MD	4160. ft	Job Depth TVD	Job Started	24 - Aug - 2010	12:24	MST
Water Depth		Wk Ht Above Floor	Job Completed	24 - Aug - 2010	13:30	MST
Perforation Depth (MD)	From 900.00 ft	To 901.00 ft	Departed Loc	24 - Aug - 2010	14:30	MST

**Job Times****Well Data**

Description	New / Used	Max pressure psig	Size in	ID in	Weight lbm/ft	Thread	Grade	Top MD ft	Bottom MD ft	Top TVD ft	Bottom TVD ft
Production Casing	Used		4.5	4.052	10.5			.	8009.	.	8009.
Tubing	Used		2.375	1.995	4.6			.	4160.	.	4160.
Perforation Interval								4430.	4430.	.	.
Perforation Interval								4150.	4151.	.	.

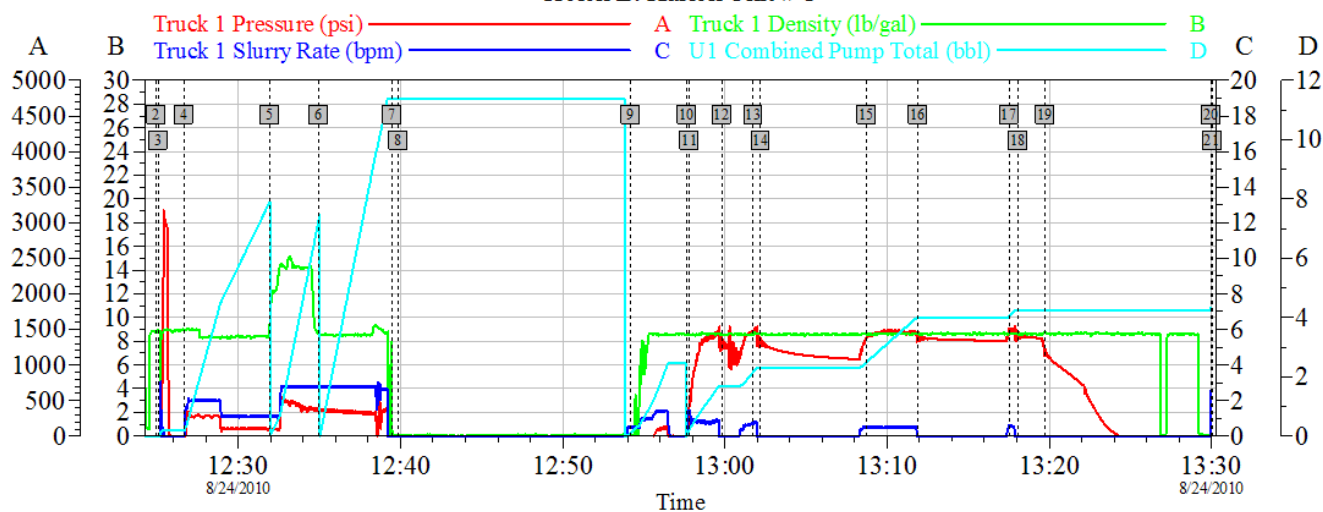
**Tools and Accessories**

Type	Size	Qty	Make	Depth	Type	Size	Qty	Make	Depth	Type	Size	Qty	Make
Guide Shoe					Packer					Top Plug			
Float Shoe					Bridge Plug					Bottom Plug			
Float Collar					Retainer					SSR plug set			
Insert Float										Plug Container			
Stage Tool										Centralizers			

Miscellaneous Materials												
Gelling Agt		Conc		Surfactant		Conc		Acid Type		Qty		Conc %
Treatment Fld		Conc		Inhibitor		Conc		Sand Type		Size		Qty
Fluid Data												
Stage/Plug #: 1												
Fluid #	Stage Type	Fluid Name			Qty	Qty uom	Mixing Density lbm/gal	Yield ft <sup>3</sup> /sk	Mix Fluid Gal/sk	Rate bbl/min	Total Mix Fluid Gal/sk	
1	Squeeze Cement	POZ PREMIUM 50/50 - SBM (12302)				sacks	15.8	1.15	5.0	3.0	5.0	
	0.2 %	HALAD(R)-322, 50 LB (100003646)										
	0.3 %	HALAD(R)-344, 50 LB (100003670)										
	5 Gal	FRESH WATER										
Calculated Values		Pressures		Volumes								
Displacement		Shut In: Instant			Lost Returns			Cement Slurry			Pad	
Top Of Cement		5 Min			Cement Returns			Actual Displacement			Treatment	
Frac Gradient		15 Min			Spacers			Load and Breakdown			Total Job	
Rates												
Circulating		Mixing			Displacement			Avg. Job				
Cement Left In Pipe	Amount	66 ft	Reason	Shoe Joint								
Frac Ring # 1 @	ID		Frac ring # 2 @	ID		Frac Ring # 3 @	ID		Frac Ring # 4 @	ID		
The Information Stated Herein Is Correct					Customer Representative Signature							

# HALLIBURTON

## Anadarko Plug Helen E. Karich Unit # 1



Global Event Log							
Intersection		TIP	TISR	UCPT	Intersection		TIP TISR UCPT
2 Start Job	12:24:57	-7.757	0.000	0.000	3 Test Lines	12:25:03	-7.817 0.000 0.000
4 Pump Spacer 1	12:26:38	-2.135	0.000	0.187	5 Pump Cement	12:31:56	116.6 1.173 7.892
6 Pump Displacement	12:34:57	381.7	2.788	7.300	7 Shut-Down	12:39:30	-4.886 0.000 11.37
8 POOH W/ tubing 10 stands	12:39:53	-8.794	0.000	11.37	9 Load Hole	12:54:12	-9.234 0.456 0.117
10 Close Pipe Rams, Begin Squeeze	12:57:39	-5.552	0.122	0.010	11 Pressure-Up	12:57:49	455.3 1.433 0.225
12 Shut-Down	12:59:49	1331	0.000	1.683	13 Pressure-up	13:01:45	1469 0.717 2.156
14 Shut-Down	13:02:12	1370	0.000	2.299	15 Pressure Up	13:08:45	1393 0.486 2.501
16 Shut-Down	13:11:54	1422	0.000	3.989	17 Pressure up	13:17:31	1488 0.534 4.058
18 Shut-Down	13:18:04	1448	0.000	4.226	19 Bleed Pressure Slowly	13:19:45	1208 0.000 4.226
20 End Job	13:29:59	-11.73	2.541	4.335	21 End Job	13:30:03	-11.73 2.541 4.335

Customer: Anadarko  
Well Description: Helen E. Karich Unit # 1

Job Date: 24-Aug-2010  
UWI:

Sales Order #: 7591415

OptiCem v6.4.2  
24-Aug-10 14:42