

WELL LOCATION CERTIFICATE

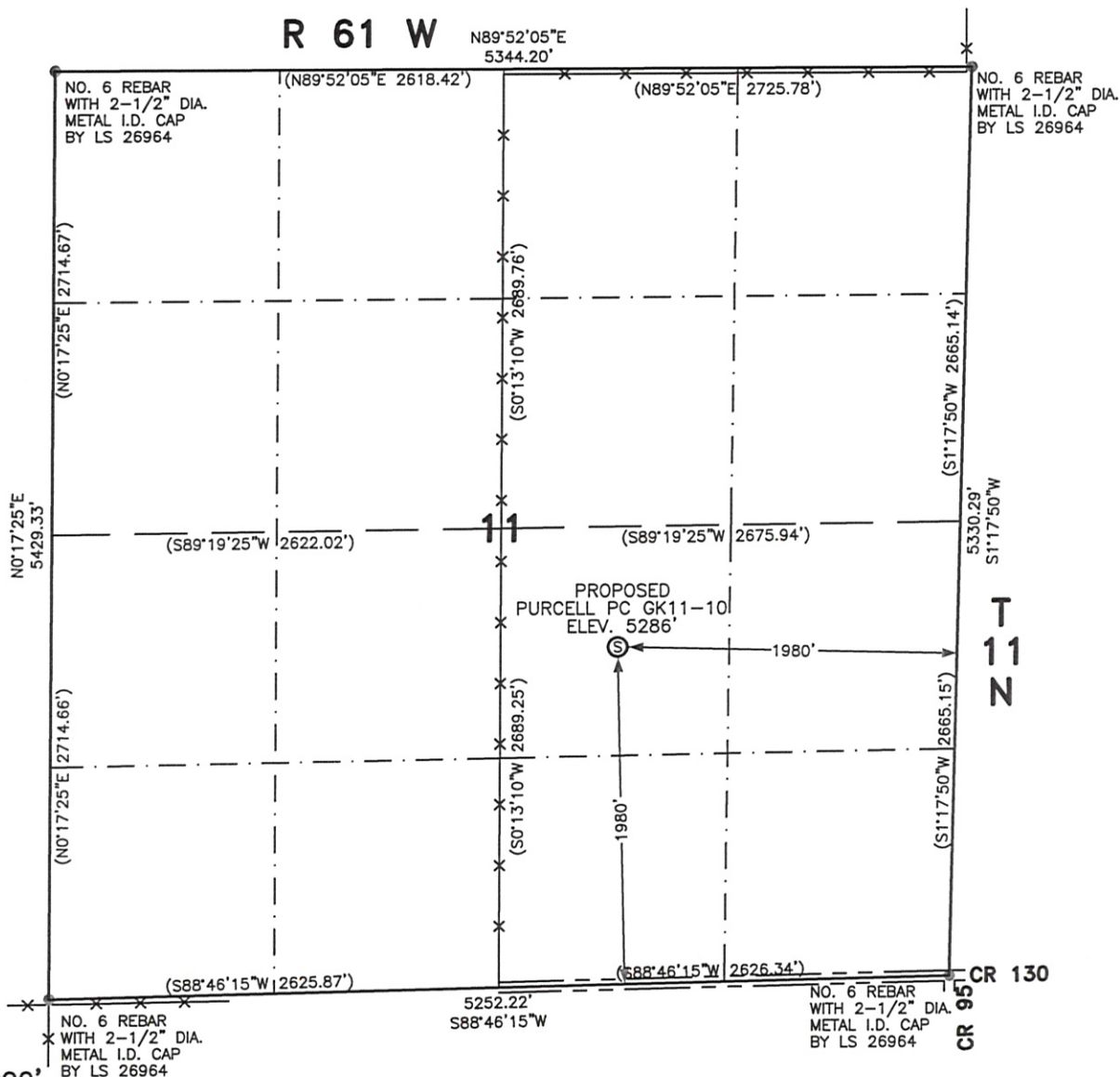
THIS MAP DOES NOT REPRESENT A BOUNDARY SURVEY

PURCELL PC GK11-10

SECTION 11
TOWNSHIP 11 NORTH
RANGE 61 WEST

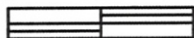
R 61 W

N89°52'05"E
5344.20'



SCALE: 1"=1000'

0 500 1000



SCALE IN FEET

IN ACCORDANCE WITH A REQUEST FROM ERIK VAN DECAR - NOBLE ENERGY INC. LEIBERT-McATEE & ASSOCIATES, INC HAS DETERMINED THE LOCATION OF THE PURCELL PC GK11-10 WELL TO BE 1980' FSL AND 1980' FEL, AS MEASURED AT NINETY (90) DEGREES FROM THE SECTION LINES OF SECTION 11, TOWNSHIP 11 NORTH, RANGE 61 WEST, 6TH PRINCIPAL MERIDIAN, WELD COUNTY, COLORADO.

I HEREBY CERTIFY THAT THIS WELL LOCATION CERTIFICATE WAS PREPARED BY ME, OR UNDER MY DIRECT SUPERVISION. THAT THE FIELD WORK WAS COMPLETED ON 8/18/2010, FOR AND ON BEHALF OF NOBLE ENERGY INC, THAT IT IS NOT A LAND SURVEY PLAT OR AN IMPROVEMENT SURVEY PLAT, AND THAT IT IS NOT TO BE RELIED UPON FOR ESTABLISHMENT OF FENCE, BUILDING, OR OTHER FUTURE IMPROVEMENT LINES.

NOTES:

- 1) BASIS OF BEARINGS FOR THIS MAP ARE BASED UPON GPS OBSERVATIONS MADE ON 8/18/2010 BETWEEN MONUMENT LOCATED AT THE NORTHWEST SECTION CORNER AND THE NORTHEAST SECTION CORNER OF SAID SECTION AND WITH ALL BEARINGS SHOWN HEREON RELATIVE THERETO.
- 2) ELEVATIONS ARE BASED UPON NGS OPUS SOLUTION NAVD 88 DATUM.
- 3) SEE VISIBLE IMPROVEMENTS EXHIBIT FOR ALL IMPROVEMENTS WITHIN 600'.
- 4) THE LOCATION FALLS IN WHEAT STUBBLE.

LATITUDE & LONGITUDE (NAD 83):
LATITUDE: N 40.93432
LONGITUDE: W 104.17001
PDOP: 2.0
QUARTER-QUARTER: NW1/4SE1/4
NEAREST PROPERTY LINE: 682' WEST

LEGEND

⊙ PROPOSED SURFACE LOCATION

== == == ROAD
-x-x- FENCE

CALCULATED DIMENSIONS
ARE IN PARENTHESES

GPS OPERATOR: DARREN VEAL
DWG NO. 325-10

NOTICE: According to Colorado law you MUST commence any legal action based upon any defect in the W.L.C. within three years after you first discover such defect. In no event may only action based upon any defect in this W.L.C. be commenced more than ten years from this sold date of the certification shown hereon.



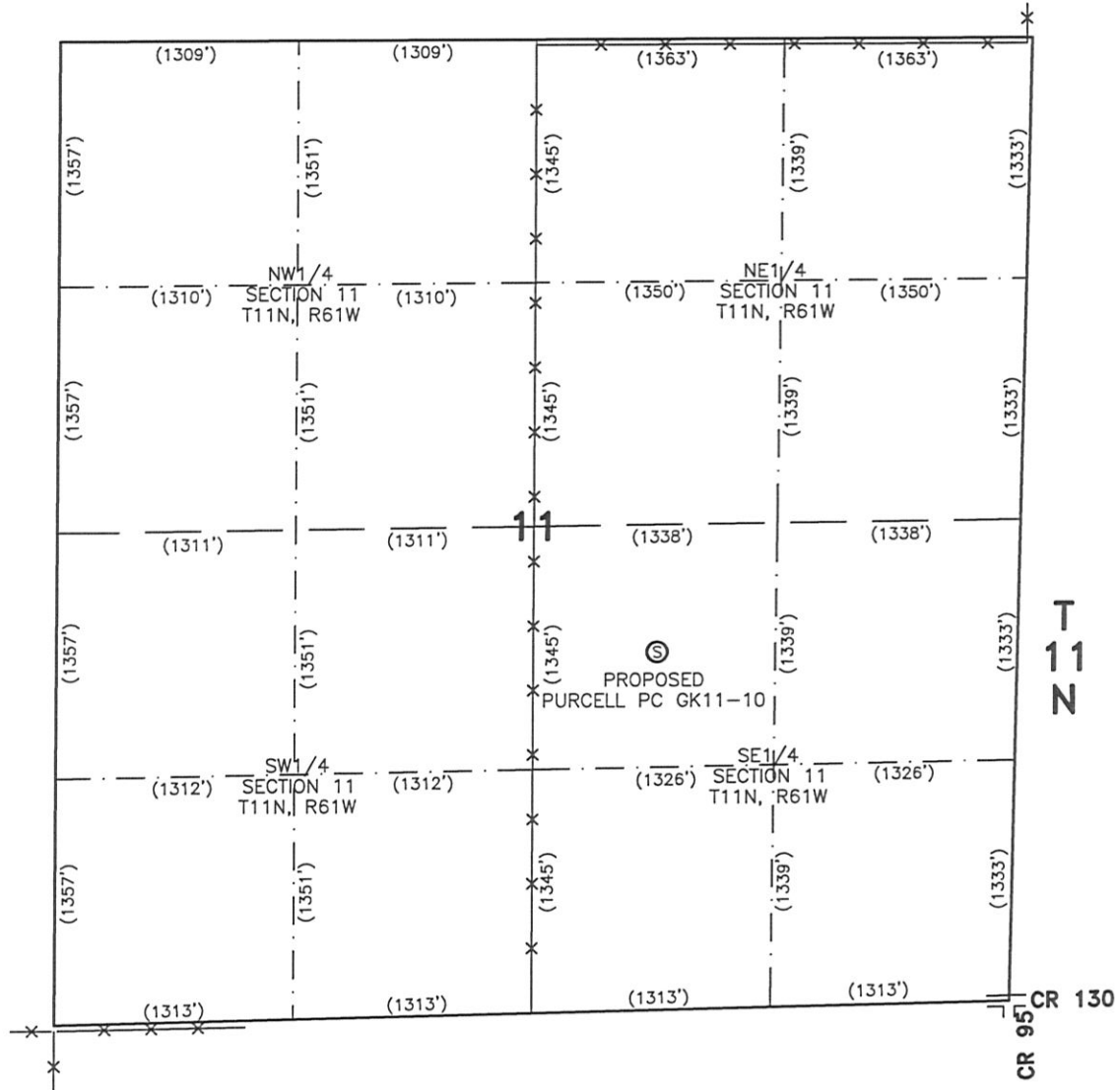
COMPLETED 8-20-10

NICOLE F. HAY
FOR AND ON BEHALF OF
LEIBERT-McATEE & ASSOCIATES, INC
P.L.S. 38044

SITE SKETCH – PURCELL PC GK11-10

R 61 W

SECTION 11
TOWNSHIP 11 NORTH
RANGE 61 WEST



NOTES:

- 1) THIS SKETCH DOES NOT REPRESENT A BOUNDARY SURVEY.
- 2) THE DATUM FOR THE LATITUDES AND LONGITUDES ON THIS SKETCH IS NAD83.
- 3) ELEVATIONS ARE BASED UPON NGS OPUS SOLUTION NAVD 88 DATUM.

LEGEND

Ⓢ PROPOSED SURFACE LOCATION

== == == ROAD

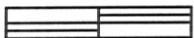
— x — FENCE

CALCULATED DIMENSIONS
ARE IN PARENTHESES



SCALE: 1"=1000'

0 500 1000



SCALE IN FEET