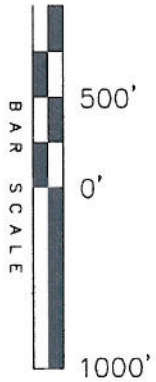


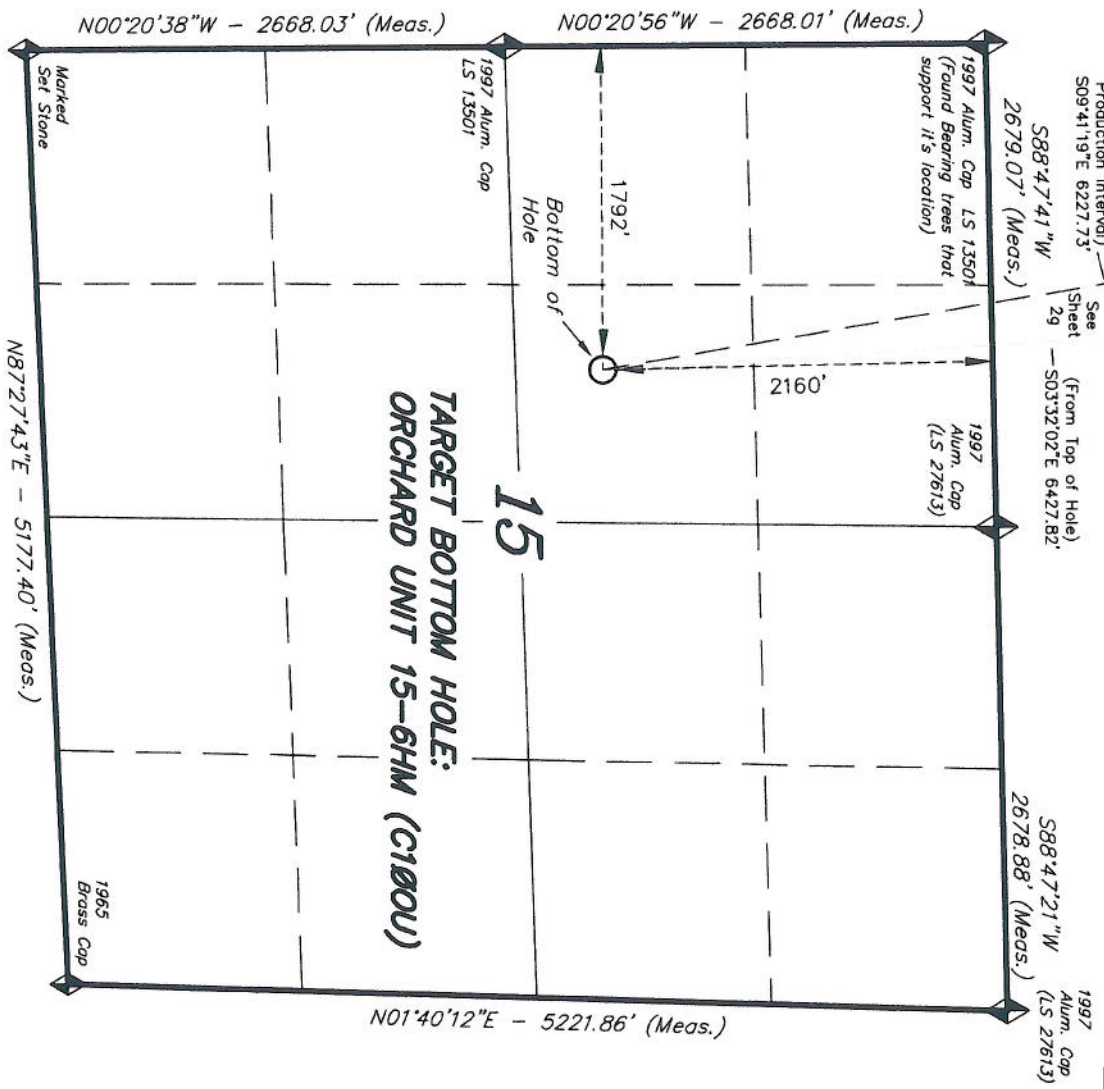
T8S, R96W, 6th P.M.

ENCANA OIL & GAS (USA) INC

TARGET BOTTOM HOLE, ORCHARD UNIT 15-6HM (C1ØØU), LOCATED AS SHOWN IN THE SE 1/4 NW 1/4 OF SECTION 15, T8S, R96W, 6th P.M. MESA COUNTY, COLORADO.



1. Well footages are measured at right angles to the Section Lines.
2. Bearings are based on Global Positioning Satellite observations.



15
TARGET BOTTOM HOLE:
ORCHARD UNIT 15-6HM (C1ØØU)

SECTION CORNERS LOCATED

Basis of elevation is the McCary Station.
39°22'27.10" N Lat. & 108°09'44.37" W
Long. (NAD 83), El. 5175' (NAVD88).

THIS IS TO CERTIFY THAT THE ABOVE PLAT WAS PREPARED FROM FIELD NOTES OF A LOCAL SURVEY MADE BY ME OR UNDER MY SUPERVISION. THE LOCATION HAS BEEN STAKED ON THE GROUND AND SHOWN ON THE PLAT, AND THAT THE SAME ARE TRUE AND CORRECT TO THE BEST OF MY KNOWLEDGE AND BELIEF.

Stacy L. Stiles
REGISTERED LAND SURVEYOR
REGISTRATION No. 40095
STATE OF COLORADO
30125

TRI STATE LAND SURVEYING & CONSULTING
180 NORTH VERNAL AVE. - VERNAL, UTAH 84078

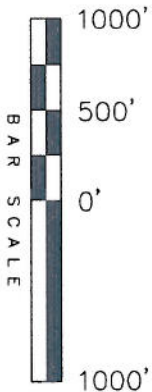
DATE SURVEYED: 03-30-10	SURVEYED BY: C.D.S.	SHEET 299 OF 11
DATE DRAWN: 08-31-10	DRAWN BY: L.C.S.	
REVISED:	SCALE: 1" = 1000'	

T8S, R96W, 6th P.M.

Aluminum Cap,
PLS 37897

ENCANA OIL & GAS (USA) INC

WELL LOCATION, ORCHARD UNIT 15-6HM (C100U), LOCATED AS SHOWN IN THE NE 1/4 NW 1/4 OF SECTION 10, T8S, R96W, 6th P.M. GARFIELD COUNTY, COLORADO.



- NOTES:**
1. Well footages are measured at right angles to the Section Lines.
 2. Bearings are based on Global Positioning Satellite observations.
 3. G.P.S. Operator: C.D. Slough, (PDDOP) = 2.0

IMPROVEMENT NOTE:

See addendum to legal plat (sheet 21) for visible improvements within 400' of the proposed well head.

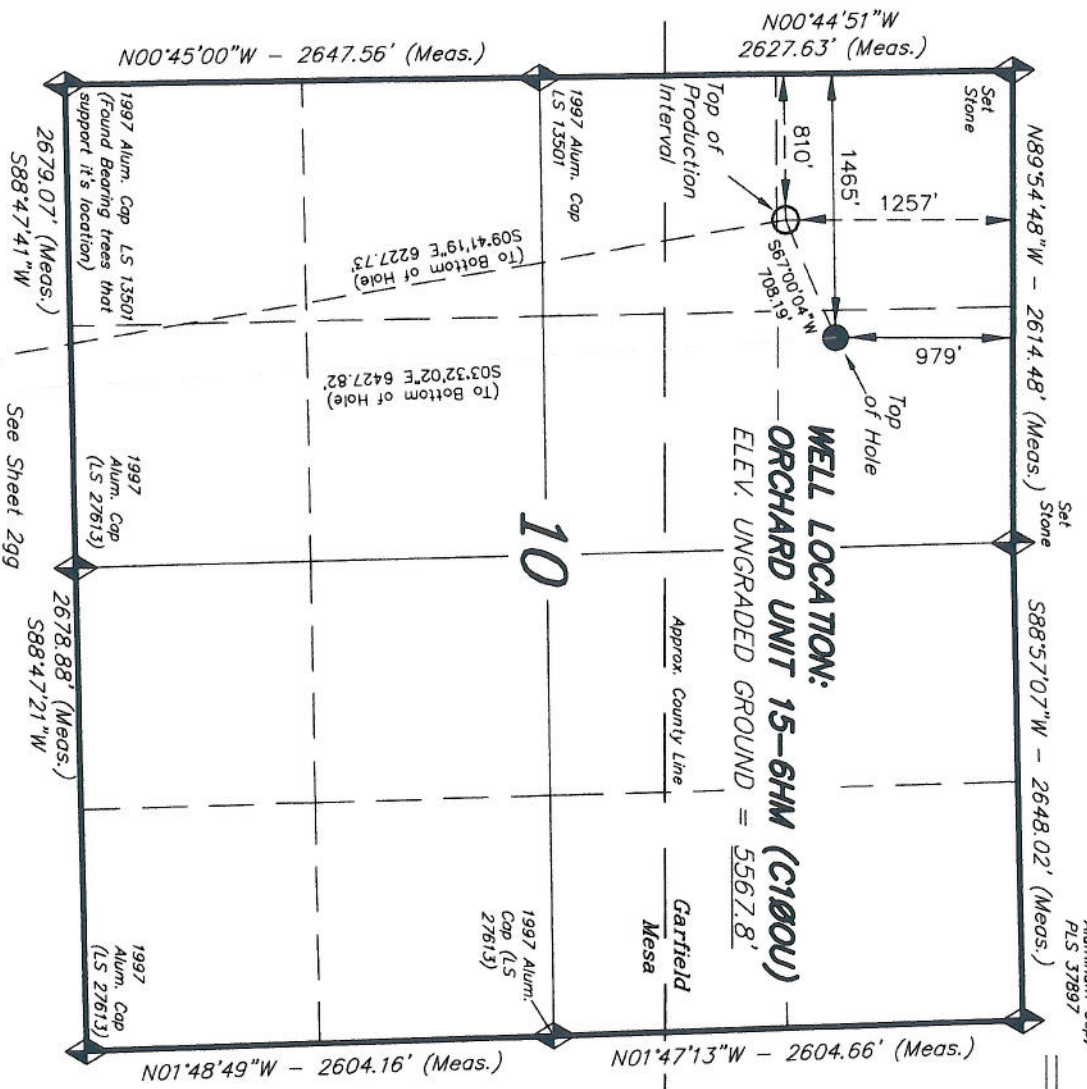
THIS IS TO CERTIFY THAT THE ABOVE PLAT WAS PREPARED FROM FIELD NOTES OF A QUALIFIED SURVEYOR MADE BY ME OR UNDER MY SUPERVISION. THE LOCATION HAS BEEN STAKED ON THE GROUND AND SHOWN ON THE PLAT, AND THAT THE SAME IS TRUE AND CORRECT TO THE BEST OF MY KNOWLEDGE AND BELIEF.

Stacy L. ...
 REGISTERED LAND SURVEYOR
 REGISTRATION NO. 30125
 STATE OF COLORADO
 NATIONAL LAND SURVEYOR

TRI STATE LAND SURVEYING & CONSULTING

180 NORTH VERNAL AVE. - VERNAL, UTAH 84078
 (435) 781-2501

DATE SURVEYED: 03-30-10	SURVEYED BY: C.D.S.	SHEET 29 OF 11
DATE DRAWN: 08-31-10	DRAWN BY: L.C.S.	
REVISED:	SCALE: 1" = 1000'	



SECTION CORNERS LOCATED

Basis of elevation is the Rifle 2 Triangulation Station. 39°31'53.80" N Lat. & 107°47'07.78" W Long. (NAD 83). Elevation = 5323.1' (NAVD88).

NAD 83 (SURFACE LOCATION)	
LATITUDE =	39°22'07.64"
	(39.368789)
LONGITUDE =	108°05'58.29"
	(108.099525)