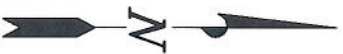
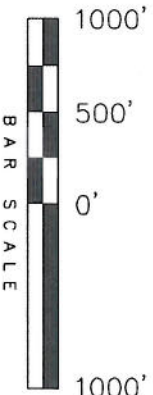


# T8S, R96W, 6th P.M.

Aluminum Cap,  
PLS 37897

## ENCANA OIL & GAS (USA) INC

WELL LOCATION, ORCHARD UNIT 15-7HM2 (C100U) LOCATED AS SHOWN IN THE NE 1/4 NW 1/4 OF SECTION 10, T8S, R96W, 6th P.M. GARFIELD COUNTY, COLORADO.



**NOTES:**

1. Well footages are measured at right angles to the Section Lines.
2. Bearings are based on Global Positioning Satellite observations.
3. G.P.S. Operator: C.D. Staugh, (PDOP) = 2.0

**IMPROVEMENT NOTE:**

See addendum to legal plat (sheet 2i) for visible improvements within 400' of the proposed well head.

THIS IS TO CERTIFY THAT THE ABOVE PLAT WAS PREPARED FROM FIELD NOTES OF A REGISTERED LAND SURVEYOR MADE BY ME OR UNDER MY SUPERVISION. THE LOCATION HAS BEEN STAKED ON THE GROUND AND SHOWN ON THE PLAT, AND THAT THE SAME ARE TRUE AND CORRECT TO THE BEST OF MY KNOWLEDGE AND BELIEF.

*Stacy A. Staugh*  
REGISTERED LAND SURVEYOR  
REGISTRATION NO. 190125  
STATE OF COLORADO  
# 30125

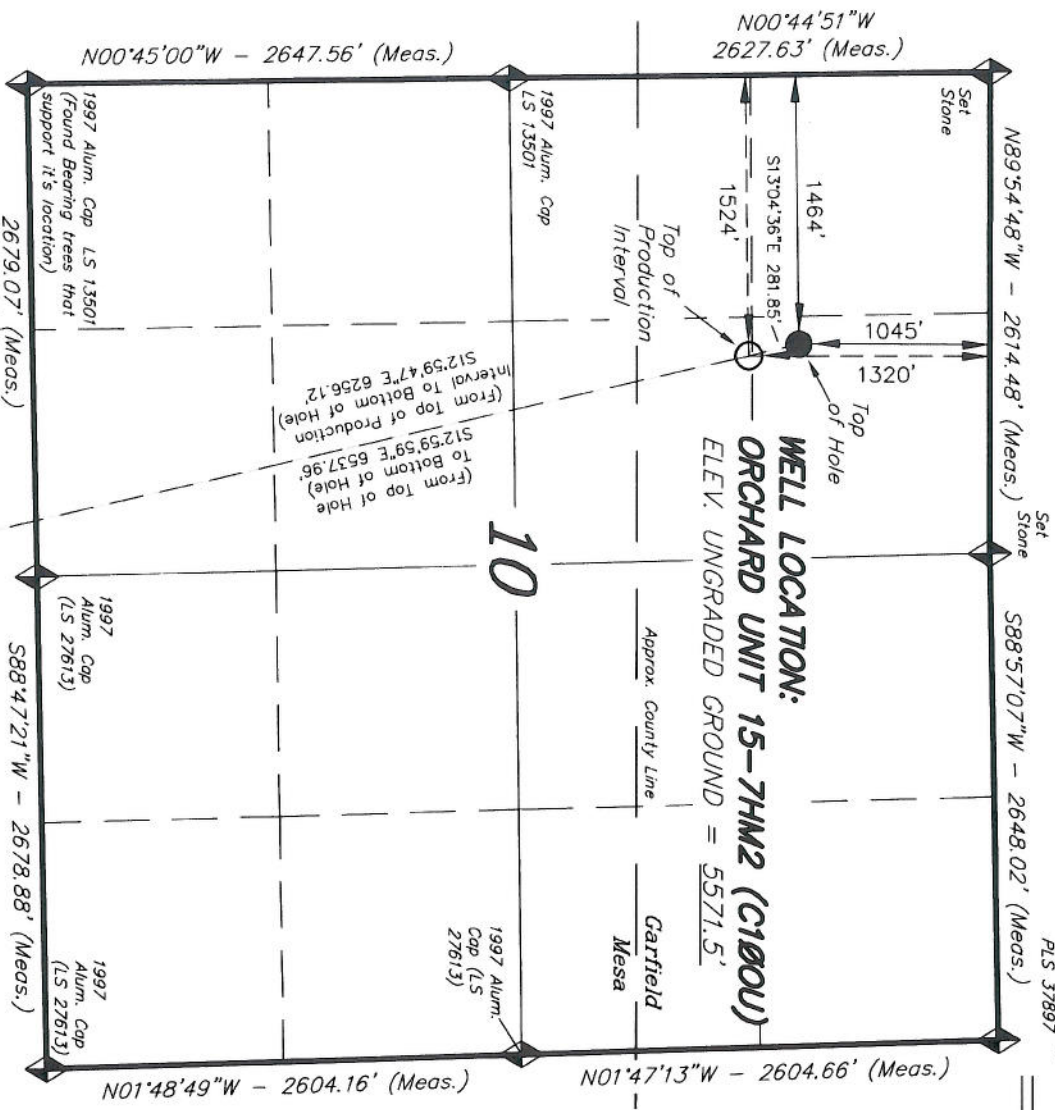
### TRI STATE LAND SURVEYING & CONSULTING

180 NORTH VERNAL AVE. - VERNAL, UTAH 84078  
(435) 781-2501

DATE SURVEYED: 03-30-10 SURVEYED BY: C.D.S. SHEET

DATE DRAWN: 08-31-10 DRAWN BY: L.C.S. **2j**

REVISED: SCALE: 1" = 1000' OF 11



SECTION CORNERS LOCATED

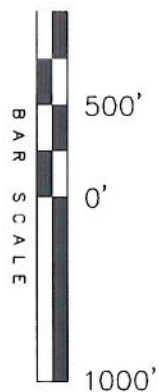
Basis of elevation is the Rifle 2 Triangulation Station, 39°31'53.80" N Lat. & 107°47'07.78" W Long. (NAD 83). Elevation = 5323.1' (NAVD88).

NAD 83 (SURFACE LOCATION)	
LATITUDE =	39°22'06.99"
LONGITUDE =	108°05'58.29"

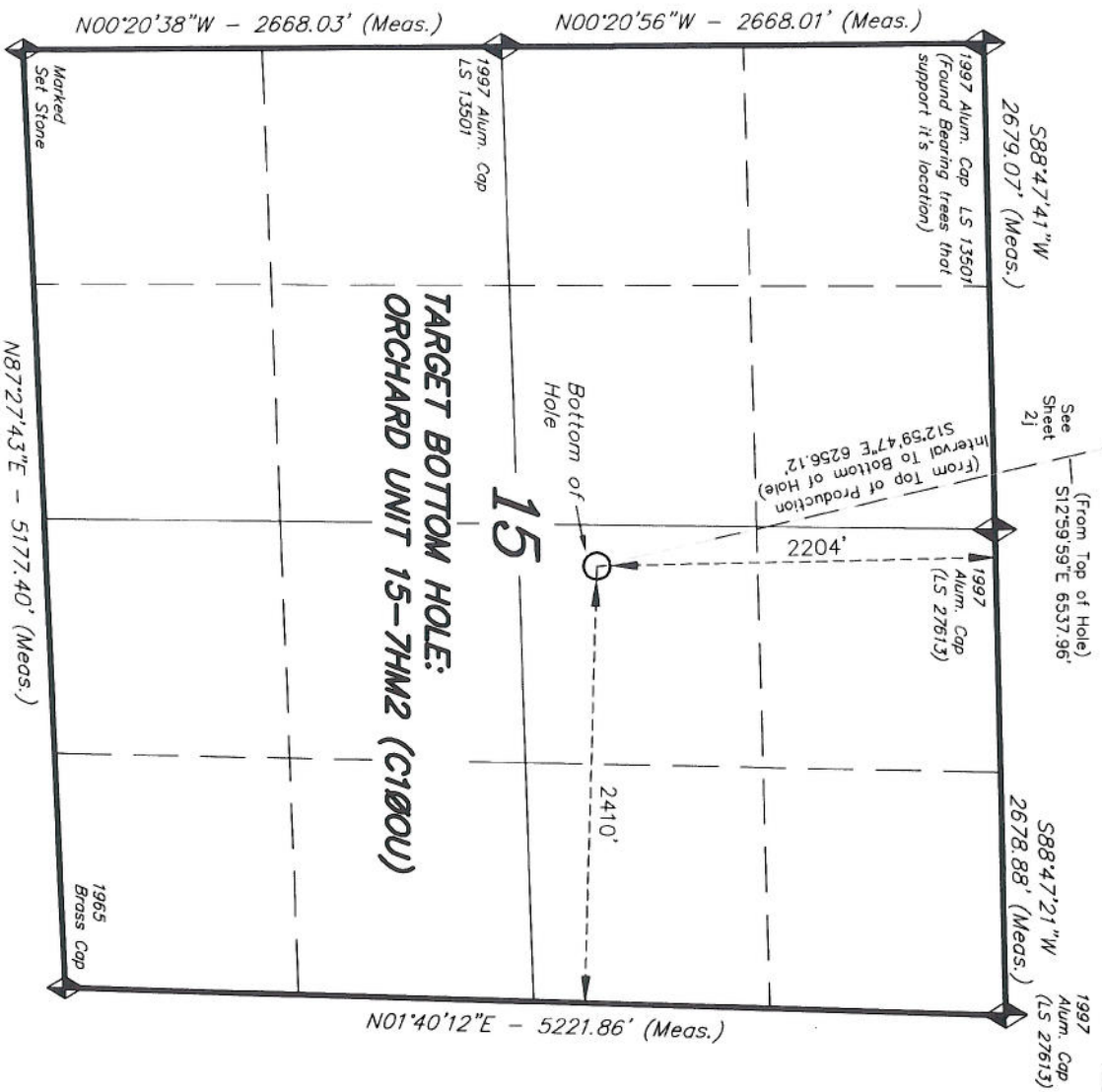
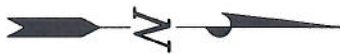
# T8S, R96W, 6th P.M.

ENCANA OIL & GAS (USA) INC

TARGET BOTTOM HOLE, ORCHARD UNIT 15-7HM2 (C100U), LOCATED AS SHOWN IN THE SW 1/4 NE 1/4 OF SECTION 15, T8S, R96W, 6th P.M. MESA COUNTY, COLORADO.



1. Well footages are measured at right angles to the Section Lines.
2. Bearings are based on Global Positioning Satellite observations.



SECTION CORNERS LOCATED

Basis of elevation is the McCary Station.  
 39°22'27.10" N Lat. & 108°09'44.37" W Long.  
 (NAD 83). El. 5175' (NAVD88).

THIS IS TO CERTIFY THAT THE ABOVE PLAT WAS PREPARED FROM FIELD NOTES OF A PROFESSIONAL SURVEYOR MADE BY ME OR UNDER MY SUPERVISION. THE LOCATION HAS BEEN STAKED ON THE GROUND AND SHOWN ON THE PLAT, AND THAT THE SAME ARE TRUE AND CORRECT TO THE BEST OF MY KNOWLEDGE AND BELIEF.

*Stacy C. ...*  
 REGISTERED LAND SURVEYOR  
 REGISTRATION NO. 30125  
 STATE OF COLORADO  
 PROFESSIONAL LAND SURVEYOR

**TRI STATE LAND SURVEYING & CONSULTING**  
 180 NORTH VERNAL AVE. - VERNAL, UTAH 84078

DATE SURVEYED: 03-30-10	SURVEYED BY: C.D.S.	SHEET <b>211</b> OF 11
DATE DRAWN: 08-31-10	DRAWN BY: L.C.S.	
REVISED:	SCALE: 1" = 1000'	