

Multi Well Plan

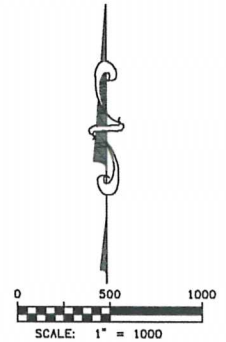
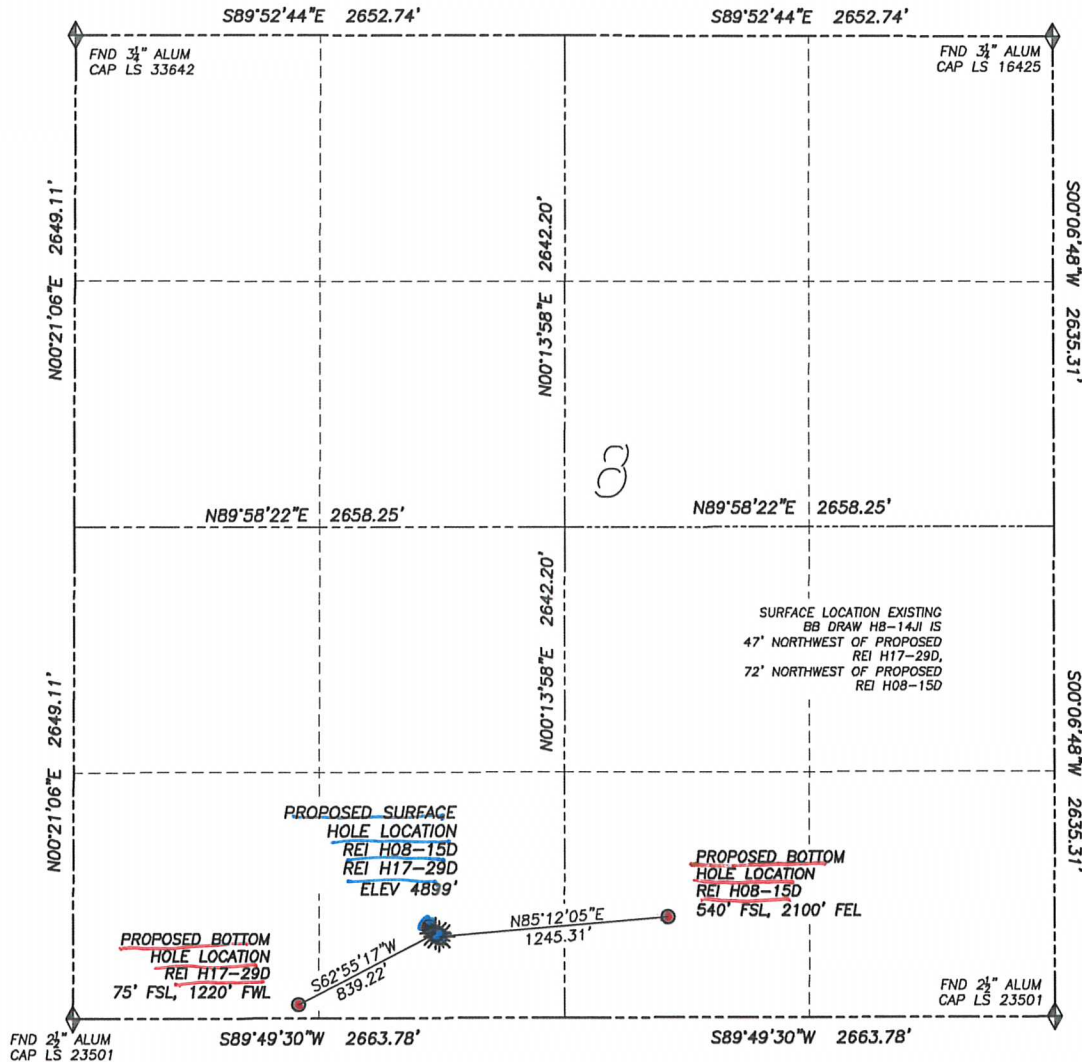
DALEY LAND SURVEYING, INC.

PARKER, CO. 80134

303 953 9841

DIRECTIONAL LAYOUT REI H08-15D & REI H17-29D

SECTION 8, TOWNSHIP 3 NORTH, RANGE 65 WEST OF THE 6TH PRINCIPAL MERIDIAN



LEGEND	
	FOUND MONUMENT AS DESCRIBED
	PROPOSED WELL
	EXISTING WELL
	BOTTOM HOLE
	ABANDONED WELL

NAD 83 LATITUDE AND LONGITUDE

REI H17-29D SURFACE HOLE:

LATITUDE: N40.23389°
LONGITUDE: W104.68978°
ELEVATION: 4899'
PDOP 1.8
455' FSL, 1965' FWL

BOTTOM HOLE:

LATITUDE: N40.23284°
LONGITUDE: W104.68245°
75' FSL, 1220' FWL

NEAREST EXISTING WELL:

BB DRAW H 8-14JI SURFACE HOLE
LATITUDE: N40.23397°
LONGITUDE: W104.68991°
ELEVATION: 4899'
47' NORTHWEST

NAD 83 LATITUDE AND LONGITUDE

REI H08-15D SURFACE HOLE:

LATITUDE: N40.23385°
LONGITUDE: W104.68971°
ELEVATION: 4898'
PDOP 1.3
440' FSL, 1985' FWL

BOTTOM HOLE:

LATITUDE: N40.23413°
LONGITUDE: W104.68526°
540' FSL, 2100' FEL

NEAREST EXISTING WELL:

BB DRAW H8-14JI SURFACE HOLE
LATITUDE: N40.23397°
LONGITUDE: W104.68991°
ELEVATION: 4899'
72' NORTHWEST