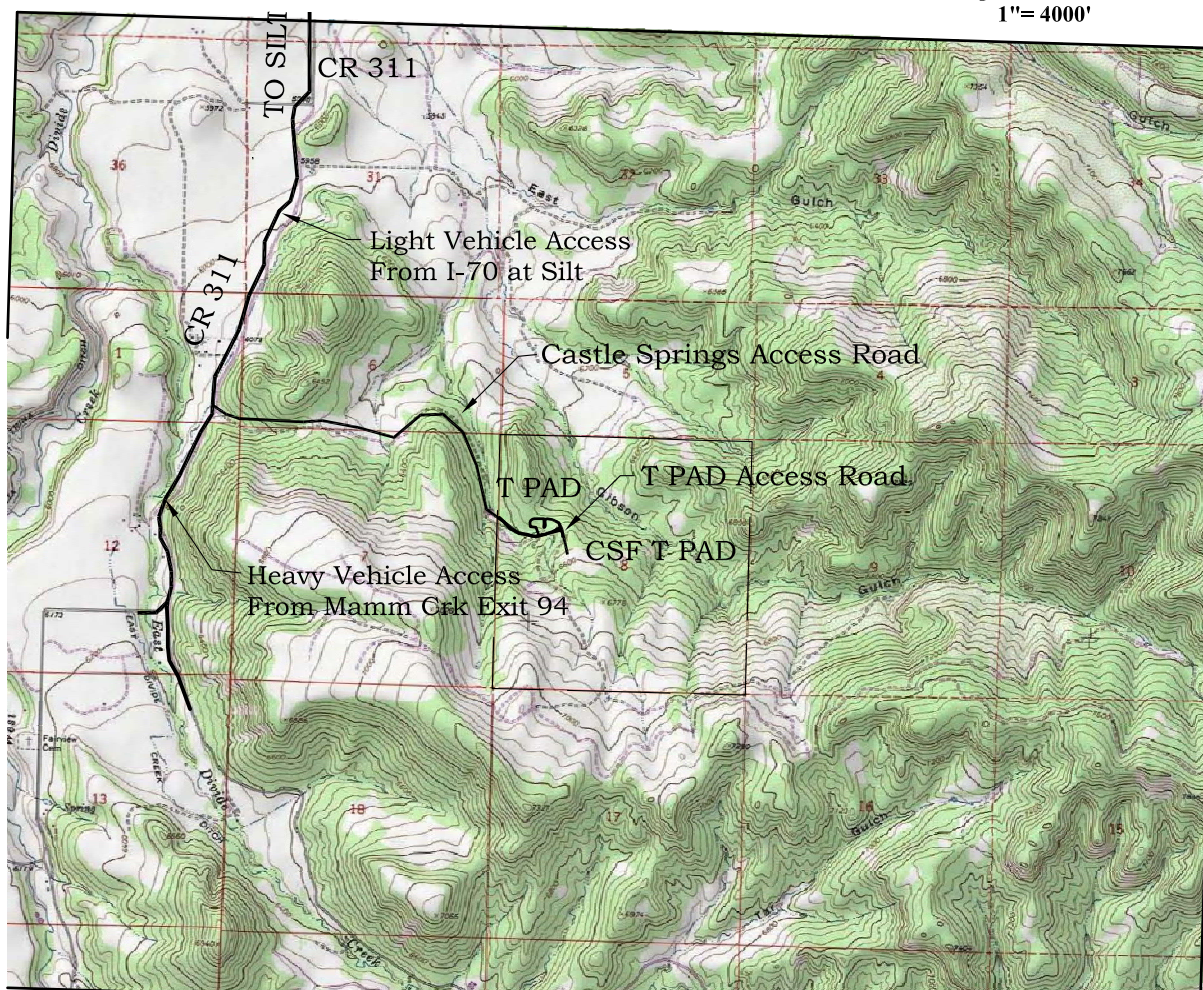
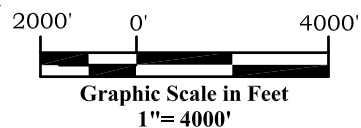


CSF T PAD

Access and Vicinity Map

Section 10, Township 7 South, Range 91 West



Access:

The primary light vehicle access route to the NCS Project Area would be from Interstate 70 (I-70) exiting at Silt, Colorado (Exit 97). Directions to the NCS Project Area are as follows: After exiting I-70, proceed to the frontage road (River Frontage Road) at the south end of the Silt/I-70 interchange; proceed in a general easterly direction along this frontage road 0.4 miles to the intersection with County Road 311 (CR 311); turn right and follow CR 311 in a general southerly direction crossing the Colorado River and continue 0.6 miles to the intersection with CR 331; turn left and follow CR 311 in a general easterly direction for 1.4 miles to the intersection with CR 335. Turn right at the intersection of CR 311 and CR 335, and follow CR 311 in a general southeasterly direction along Divide Creek approximately 5.5 miles to the intersection with a gravel road that enters the NCS Project Area on the left. Continue easterly along NCS access 2.0 miles to the T PAD access road. Turn left and proceed norththerly 0.1 miles to the T PAD.

The primary heavy vehicle access routes will continue to be defined by Garfield County heavy haul vehicle routes. The current (June 2010) heavy haul route to the NCS project area is as follows: Exit I-70 at the Rifle Municipal Airport Exit (Exit 94). After exiting I-70, proceed to the frontage road (CR 346) at the south end of the Airport/I-70 interchange. Proceed in a general easterly direction along CR 346 for 3 miles to the intersection with CR 331 (Dry Hollow Rd.). Turn right and follow CR 331 for 6.75 miles in a general southerly direction to the intersection with CR 324. Turn left onto CR 324 (Maxfield Rd) and follow CR 324 in a general easterly direction for 2.4 miles to the intersection with CR 311. Turn left at the intersection of CR311 and CR 324 and follow CR 311 in a general northerly direction for 2.3 miles to the intersection with a gravel road that enters the NCS project area on the right. Continue easterly along NCS access 2.0 miles to the T PAD access road. Turn left and proceed norththerly 0.1 miles to the T PAD.



River Valley Survey, Inc.
110 East 3rd. Street, Suite 213
Rifle, Colorado 81650
Ph: 970-379-7846

Project: CASTLE SPRINGS FEDERAL T PAD

Field Date: 06-09-10

Date: 09-22-2010

Scale: 1"= 4000'

Sheet: 11 of 11

Well Location Plat
Prepared For Antero Resources

Situate In:
NW 1/4 Section 8, T7S., R. 91 W. of the
6th P.M., Garfield County, Colorado

