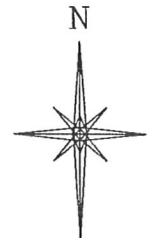
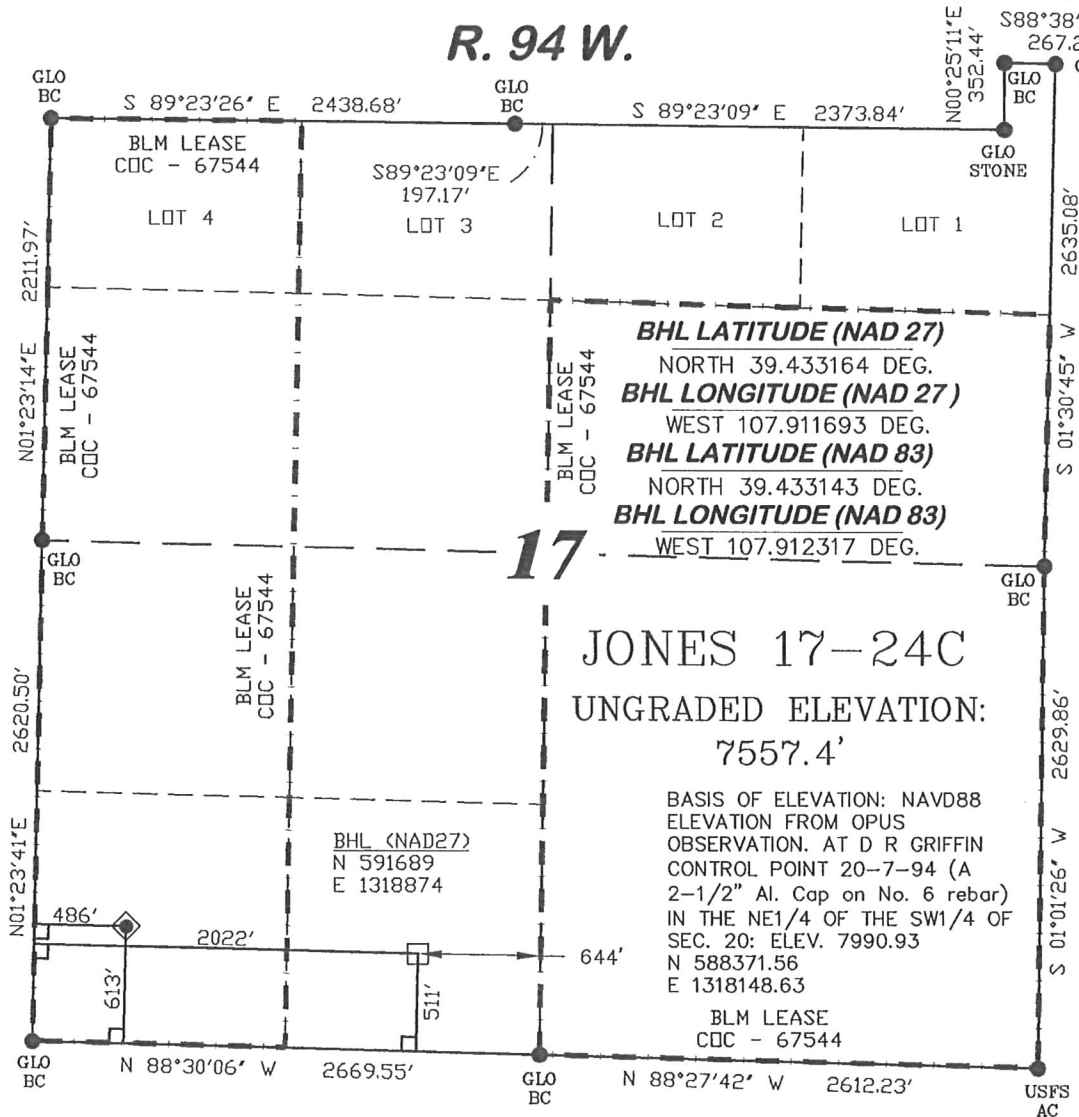


R. 94 W.



SCALE: 1" = 1000'

T. 7 S.

**SHL LATITUDE (NAD 27)**  
NORTH 39.433441 DEG.  
**SHL LONGITUDE (NAD 27)**  
WEST 107.917130 DEG.  
**SHL LATITUDE (NAD 83)**  
NORTH 39.433419 DEG.  
**SHL LONGITUDE (NAD 83)**  
WEST 107.917551 DEG.  
**SHL NORTHING**  
591830.75  
**SHL EASTING**  
1317341.24

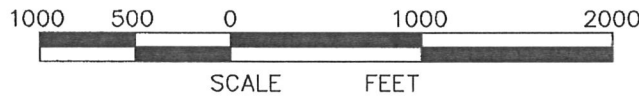
**17**  
JONES 17-24C  
UNGRADED ELEVATION:  
7557.4'

BASIS OF ELEVATION: NAVD88  
ELEVATION FROM OPUS  
OBSERVATION. AT D R GRIFFIN  
CONTROL POINT 20-7-94 (A  
2-1/2" Al. Cap on No. 6 rebar)  
IN THE NE 1/4 OF THE SW 1/4 OF  
SEC. 20: ELEV. 7990.93  
N 588371.56  
E 1318148.63  
BLM LEASE  
CCC - 67544

**BASIS OF BEARING**  
SPCS CO CENTRAL NAD  
27, BASED ON NGS TRIG.  
STATION 'FABER'  
THE BASIS OF BEARINGS FOR  
THIS SURVEY IS REFERENCED  
TO THE SOUTH LINE OF THE  
SW 1/4 OF SECTION 17, BEING  
MONUMENTED WITH GLO BC'S  
AND BEARING N 88° 30' 06" W.

**LEGEND**

- ◆ WELL LOCATION
- FOUND MONUMENT
- L DENOTES 90° TIE
- CALCULATED CORNER
- APPROXIMATE BHL



**SURVEYOR'S STATEMENT**

I, Ronald C. Rennke, an employee and agent on behalf of D.R. GRIFFIN & ASSOCIATES, INC. state the plat hereon is a correct representation of a survey made under my supervision on June 23, 2008 of the shown JONES 17-24C and that the location has been staked on the ground as shown on the plat.

**NOTES**

- GPS OPERATOR JOHN RICHARDSON  
OBSERVED A PDOP OF 2.3.
- ALL GPS OBSERVATIONS ARE IN  
COMPLIANCE WITH COGCC RULE NO. 215.
- HIGH PLATEAU DESERT  
NO IMPROVEMENTS WITHIN  
200' RADIUS OF WELL SITE.  
SURFACE USE IS NATIVE WOODS

Professional Seal of Ronald C. Rennke, Surveyor No. 37065, dated 2/6/09. Signature of Ronald C. Rennke. COLORADO PLS No. 37065

EXHIBIT 1

<b>DRG RIFFIN &amp; ASSOCIATES, INC.</b> (307) 362-5028 1414 ELK ST., ROCK SPRINGS, WY 82901		<b>PLAT OF DRILLING LOCATION FOR NOBLE ENERGY, INC.</b>  <b>613' F/SL &amp; 486' F/WL, SECTION 17, T. 7 S., R. 94 W., 6th P.M. GARFIELD COUNTY, COLORADO</b>
DATE DRAWN: 5/23/07 KC	SCALE: 1" = 1000'	
REVISED: 11/20/08 WG	JOB No. 15454	
ADDED LEASE LINE	EXHIBIT 1	