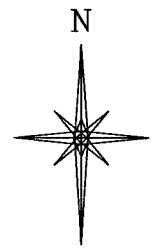
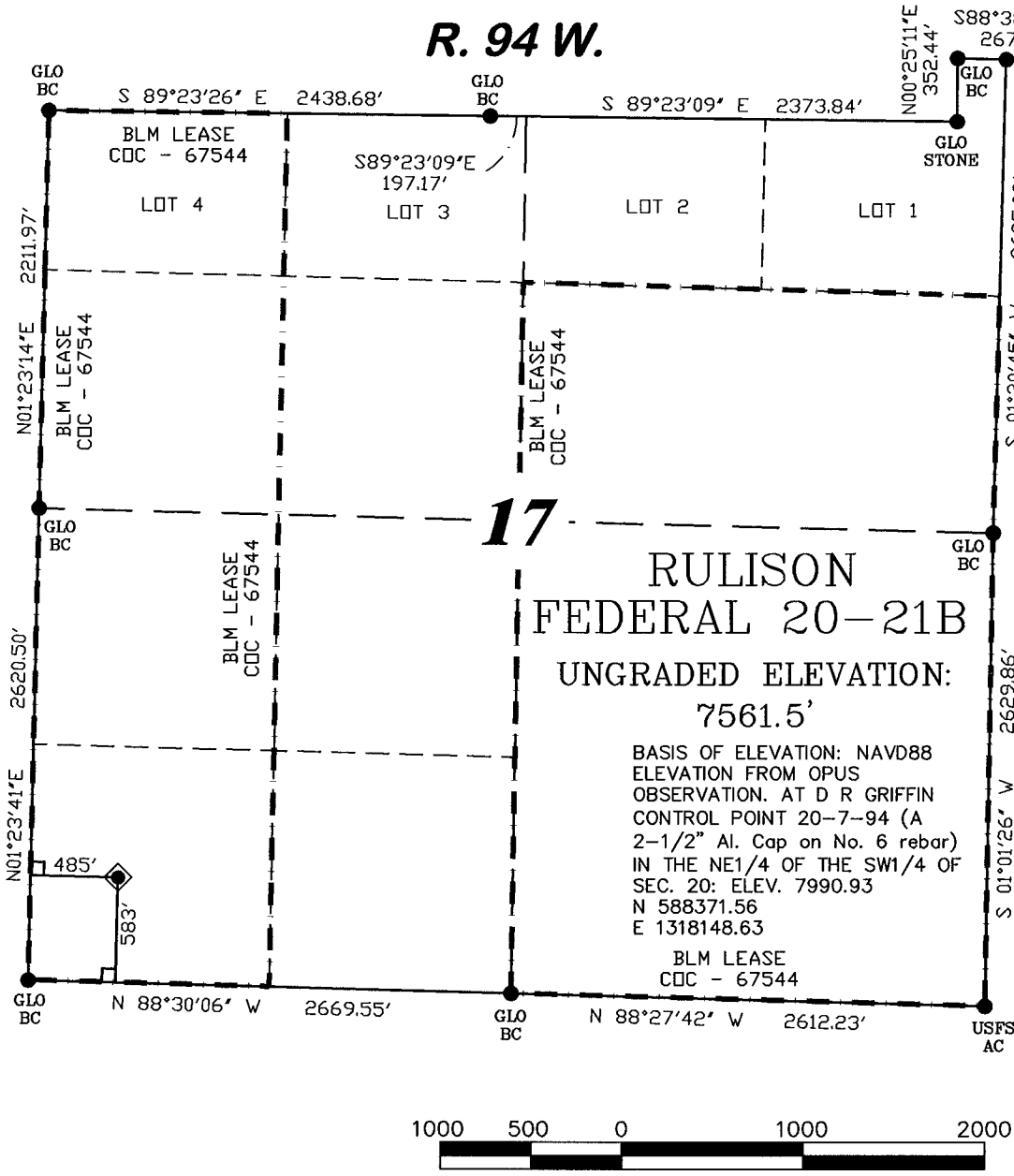


R. 94 W.



SCALE: 1" = 1000'

T. 7 S.
SHL LATITUDE (NAD 27)
 NORTH 39.433358 DEG.
SHL LONGITUDE (NAD 27)
 WEST 107.917132 DEG.
SHL LATITUDE (NAD 83)
 NORTH 39.433337 DEG.
SHL LONGITUDE (NAD 83)
 WEST 107.917756 DEG.
SHL NORTHING
 591800.77
SHL EASTING
 1317340.08

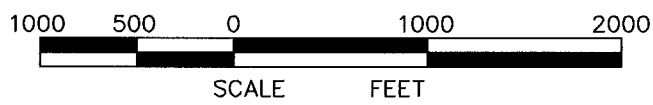
BASIS OF BEARING
 SPCS CO CENTRAL NAD 27, BASED ON NGS TRIG. STATION 'FABER'
 THE BASIS OF BEARINGS FOR THIS SURVEY IS REFERENCED TO THE SOUTH LINE OF THE SW 1/4 OF SECTION 17, BEING MONUMENTED WITH GLO BC'S AND BEARING N 88° 30' 06" W.

- LEGEND**
- ◆ WELL LOCATION
 - FOUND MONUMENT
 - L DENOTES 90° TIE
 - CALCULATED CORNER
 - APPROXIMATE BHL

17
RULISON
FEDERAL 20-21B
 UNGRADED ELEVATION:
 7561.5'

BASIS OF ELEVATION: NAVD88
 ELEVATION FROM OPUS
 OBSERVATION. AT D R GRIFFIN
 CONTROL POINT 20-7-94 (A
 2-1/2" Al. Cap on No. 6 rebar)
 IN THE NE1/4 OF THE SW1/4 OF
 SEC. 20: ELEV. 7990.93
 N 588371.56
 E 1318148.63

BLM LEASE
 CDC - 67544



SURVEYOR'S STATEMENT

I, Ronald C. Rennke, an employee and agent on behalf of D.R. GRIFFIN & ASSOCIATES, INC. state the plat hereon is a correct representation of a survey made under my supervision on June 23, 2008 of the shown RULISON FEDERAL 20-21B and that the location has been staked on the ground as shown on the plat.

NOTES

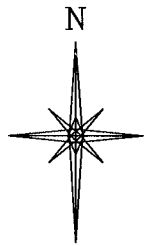
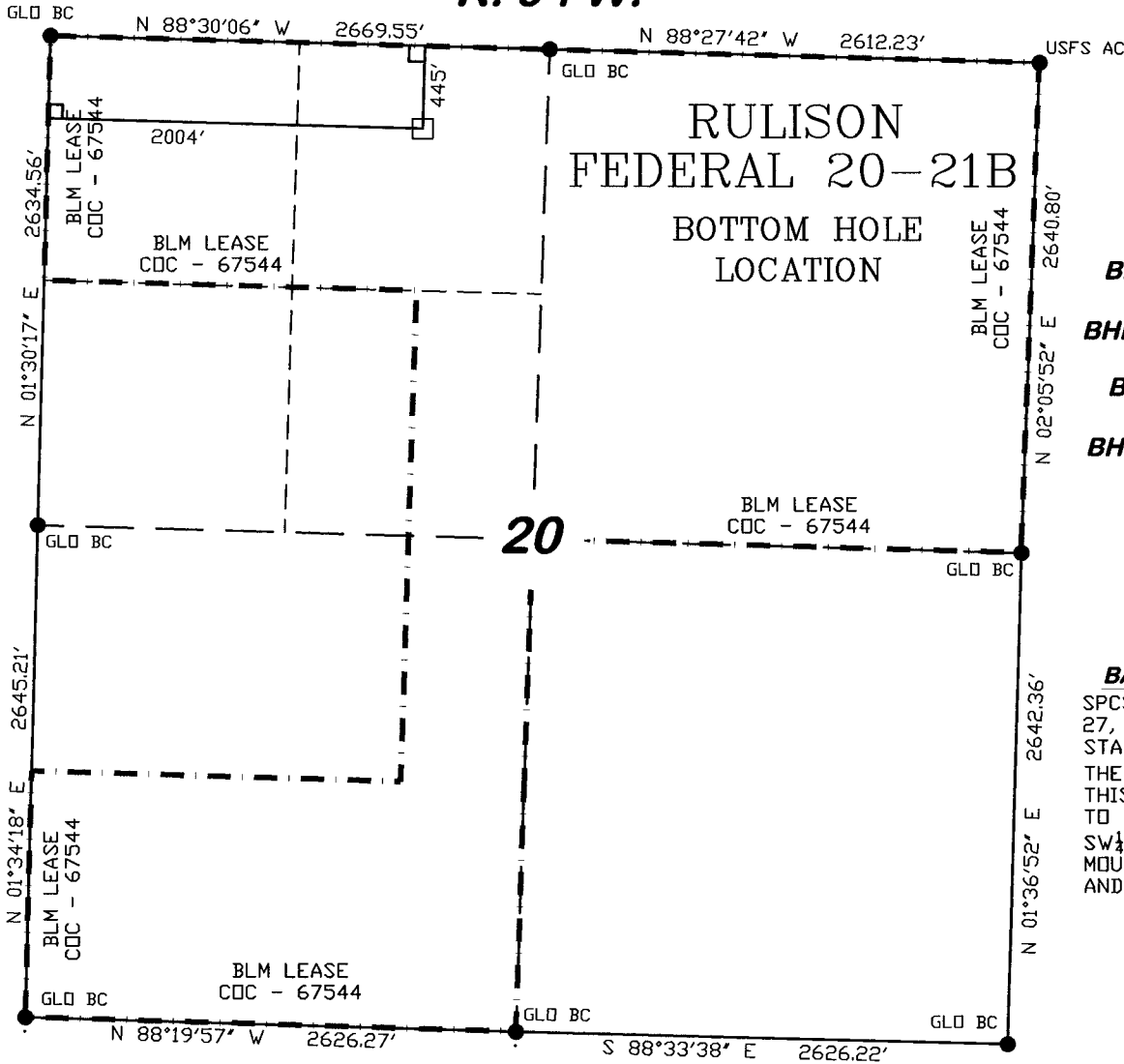
- GPS OPERATOR JOHN RICHARDSON OBSERVED A PDOP OF 2.3.
- ALL GPS OBSERVATIONS ARE IN COMPLIANCE WITH COGCC RULE NO. 215.
- HIGH PLATEAU DESERT
- NO IMPROVEMENTS WITHIN 200' RADIUS OF WELL SITE.
- SURFACE USE IS NATIVE WOODS

Ronald C. Rennke
 COLORADO PLS No. 37065
 2/6/09

EXHIBIT 1

 (307) 362-5028 1414 ELK ST., ROCK SPRINGS, WY 82901	PLAT OF DRILLING LOCATION FOR NOBLE ENERGY, INC.	
	583' F/SL & 485' F/WL, SECTION 17, T. 7 S., R. 94 W., 6th P.M. GARFIELD COUNTY, COLORADO	
	DATE DRAWN: 5/23/07 KC	SCALE: 1" = 1000'
REVISED: 11/20/08 WG	JOB No. 15454	
ADDED LEASE LINE	EXHIBIT 1	

R. 94 W.



SCALE: 1" = 1000'

T. 7 S.

BHL LATITUDE (NAD 27)

NORTH 39.430537 DEG.

BHL LONGITUDE (NAD 27)

WEST 107.911751 DEG.

BHL LATITUDE (NAD 83)

NORTH 39.430516 DEG.

BHL LONGITUDE (NAD 83)

WEST 107.912376 DEG.

BHL NORTHING

590733

BHL EASTING

1318832

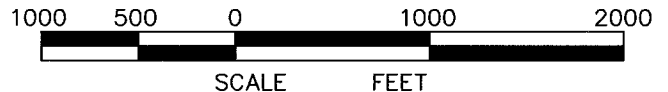
BASIS OF BEARING

SPCS CO CENTRAL NAD 27, BASED ON NGS TRIG. STATION 'FABER'

THE BASIS OF BEARINGS FOR THIS SURVEY IS REFERENCED TO THE SOUTH LINE OF THE SW $\frac{1}{4}$ OF SECTION 17, BEING MOUNTED WITH GLO BC'S AND BEARING N 88° 30' 06" W.

LEGEND

- ◆ WELL LOCATION
- FOUND MONUMENT
- L DENOTES 90° TIE
- CALCULATED CORNER
- APPROXIMATE BHL



SURVEYOR'S STATEMENT

I, Ronald C. Rennke, an employee and agent on behalf of D.R. GRIFFIN & ASSOCIATES, INC. state the plat hereon is a correct representation of a survey made under my supervision on June 23, 2008 of the shown RULISON FEDERAL 20-21B Bottom Hole Location.

NOTES

GPS OPERATOR FRANK COLLINS OBSERVED A PDOP OF 1.5.

ALL GPS OBSERVATIONS ARE IN COMPLIANCE WITH COGCC RULE NO. 215.

HIGH PLATEAU DESERT
NO IMPROVEMENTS WITHIN
200' RADIUS OF WELL SITE.
SURFACE USE IS NATIVE WOODS

2/6/09
Ronald C. Rennke
 COLORADO PLS No. 37065

EXHIBIT 1



GRIFFIN & ASSOCIATES, INC.

(307) 362-5028

1414 ELK ST., ROCK SPRINGS, WY 82901

**PLAT OF BOTTOM HOLE LOCATION
FOR
NOBLE ENERGY, INC.**

DATE DRAWN: 5/23/07 KC

SCALE: 1" = 1000'

REVISED: 11/20/08 WG

JOB No. 15454

ADDED LEASE LINE

EXHIBIT 1

**445' F/NL & 2004' F/WL, SECTION 20,
T. 7 S., R. 94 W., 6th P.M.
GARFIELD COUNTY, COLORADO**