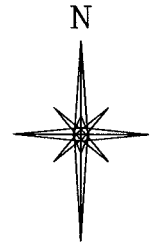
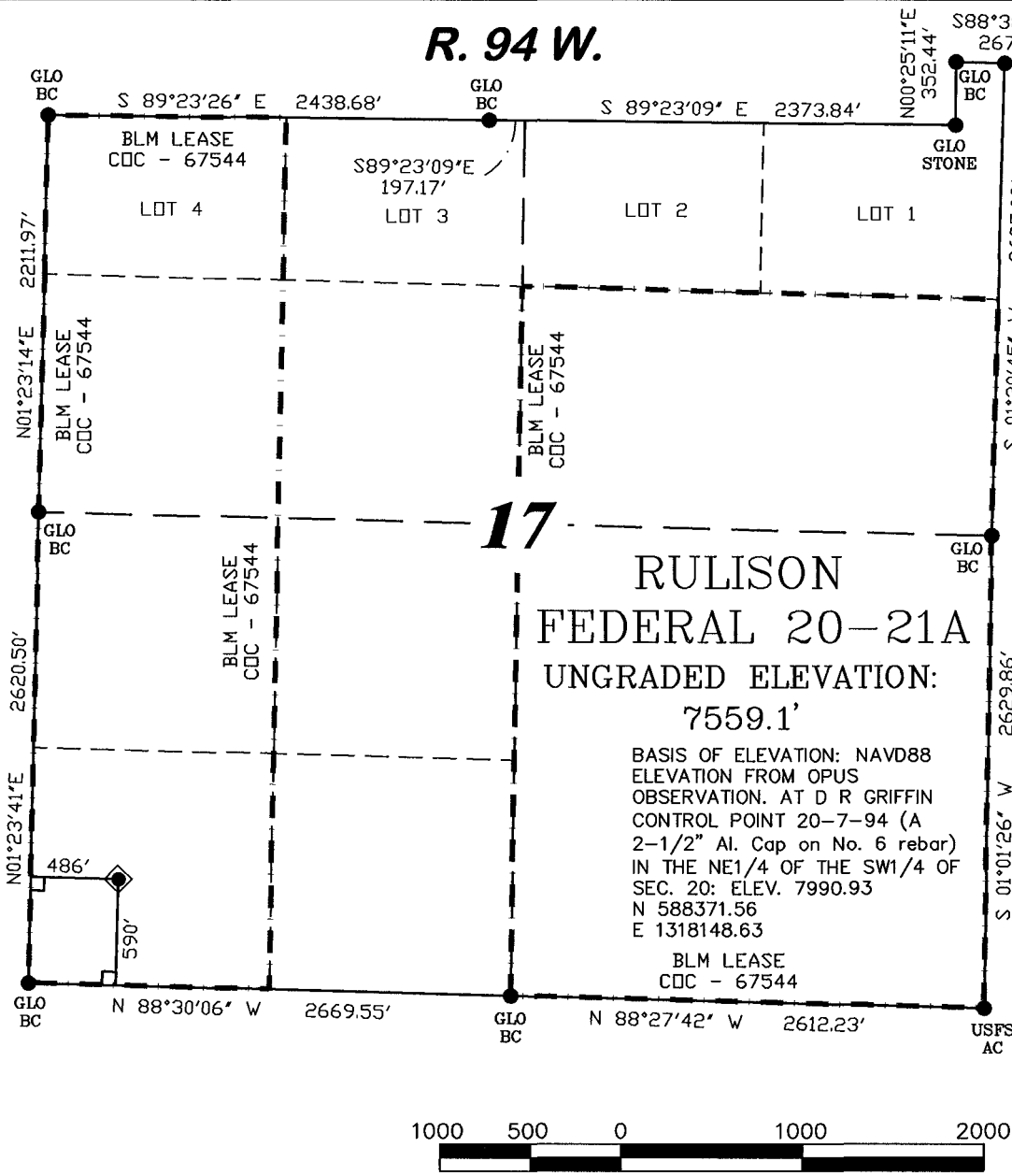


**R. 94 W.**



SCALE: 1" = 1000'

**T. 7 S.**

**SHL LATITUDE (NAD 27)**  
NORTH 39.433379 DEG.  
**SHL LONGITUDE (NAD 27)**  
WEST 107.917131 DEG.  
**SHL LATITUDE (NAD 83)**  
NORTH 39.433358 DEG.  
**SHL LONGITUDE (NAD 83)**  
WEST 107.917756 DEG.

**SHL NORTHING**  
591808.26  
**SHL EASTING**  
1317340.37

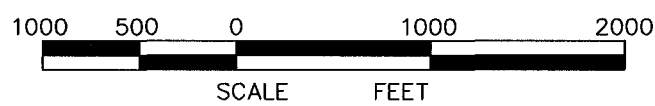
**BASIS OF BEARING**  
SPCS CO CENTRAL NAD 27, BASED ON NGS TRIG. STATION 'FABER'  
THE BASIS OF BEARINGS FOR THIS SURVEY IS REFERENCED TO THE SOUTH LINE OF THE SW $\frac{1}{4}$  OF SECTION 17, BEING MOUNTED WITH GLO BC'S AND BEARING N 88° 30' 06" W.

**17**  
**RULISON**  
**FEDERAL 20-21A**  
**UNGRADED ELEVATION:**  
**7559.1'**

BASIS OF ELEVATION: NAVD88  
ELEVATION FROM OPUS  
OBSERVATION. AT D R GRIFFIN  
CONTROL POINT 20-7-94 (A  
2-1/2" Al. Cap on No. 6 rebar)  
IN THE NE1/4 OF THE SW1/4 OF  
SEC. 20; ELEV. 7990.93  
N 588371.56  
E 1318148.63

BLM LEASE  
CCC - 67544

- LEGEND**
- ◆ WELL LOCATION
  - FOUND MONUMENT
  - L DENOTES 90° TIE
  - CALCULATED CORNER
  - APPROXIMATE BHL

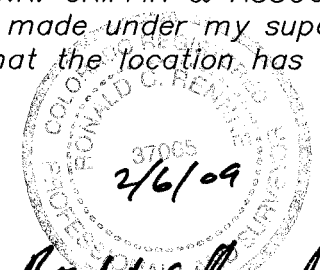


**SURVEYOR'S STATEMENT**

I, Ronald C. Rennke, an employee and agent on behalf of D.R. GRIFFIN & ASSOCIATES, INC. state the plat hereon is a correct representation of a survey made under my supervision on June 23, 2008 of the shown RULISON FEDERAL 20-21A and that the location has been staked on the ground as shown on the plat.


**NOTES**

- GPS OPERATOR JOHN RICHARDSON OBSERVED A PDOP OF 2.3.
- ALL GPS OBSERVATIONS ARE IN COMPLIANCE WITH COGCC RULE NO. 215.
- HIGH PLATEAU DESERT
- NO IMPROVEMENTS WITHIN 200' RADIUS OF WELL SITE.
- SURFACE USE IS NATIVE WOODS

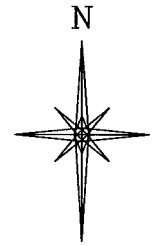
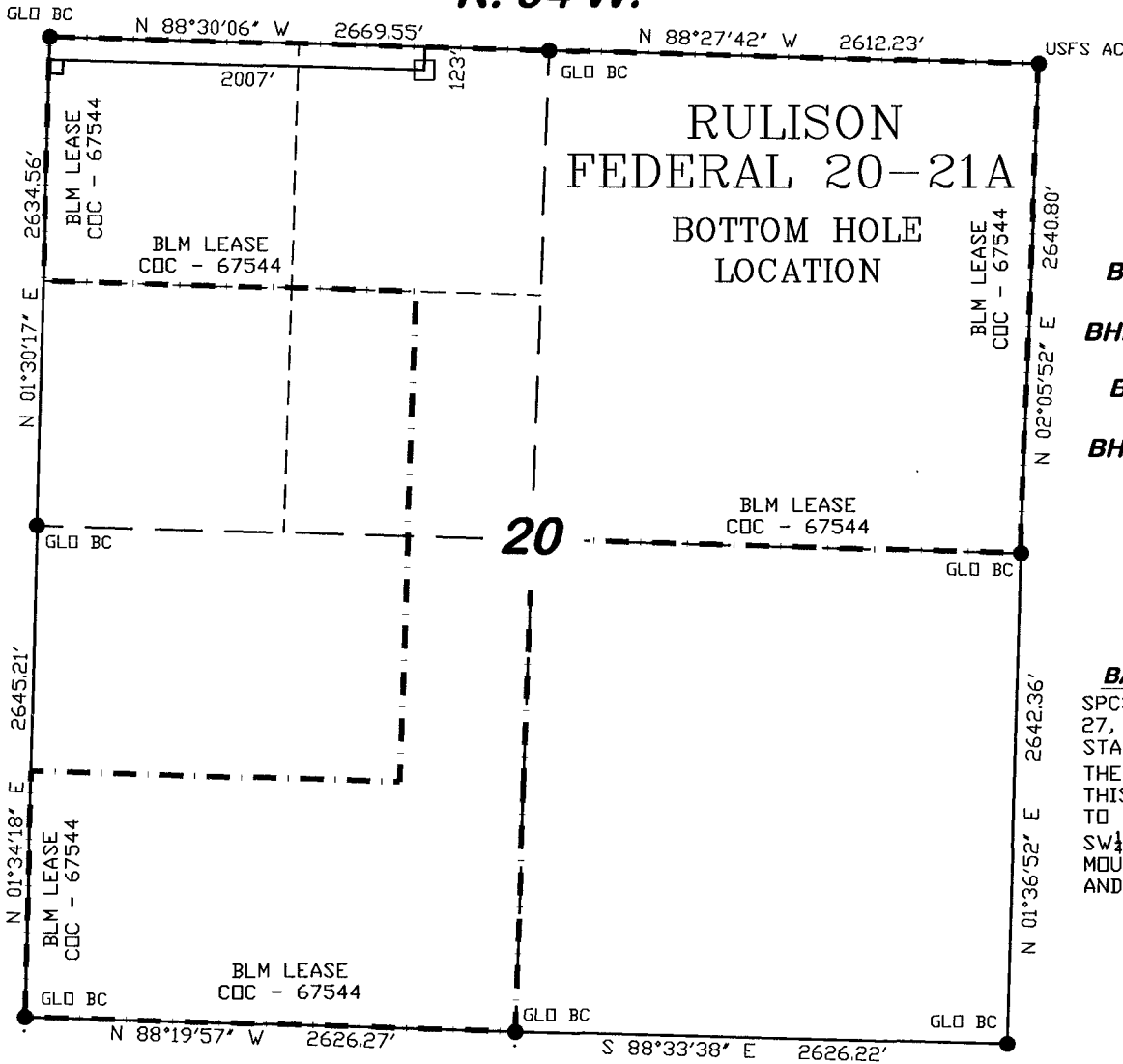


*Ronald C. Rennke*  
COLORADO PLS No. 37065

EXHIBIT 1

 <b>DR GRIFFIN &amp; ASSOCIATES, INC.</b> (307) 362-6028 1414 ELK ST., ROCK SPRINGS, WY 82901		<b>PLAT OF DRILLING LOCATION FOR NOBLE ENERGY, INC.</b>	
		<b>590' F/SL &amp; 486' F/WL, SECTION 17, T. 7 S., R. 94 W., 6th P.M. GARFIELD COUNTY, COLORADO</b>	
DATE DRAWN: 5/23/07 KC	SCALE: 1" = 1000'		
REVISED: 11/20/08 WG	JOB No. 15454		
ADDED LEASE LINE	EXHIBIT 1		

R. 94 W.



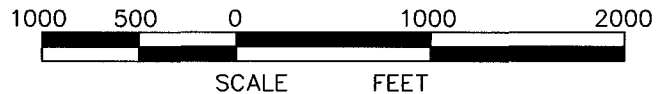
SCALE: 1" = 1000'  
**T. 7 S.**

**BHL LATITUDE (NAD 27)**  
 NORTH 39.431421 DEG.  
**BHL LONGITUDE (NAD 27)**  
 WEST 107.911739 DEG.  
**BHL LATITUDE (NAD 83)**  
 NORTH 39.431400 DEG.  
**BHL LONGITUDE (NAD 83)**  
 WEST 107.912364 DEG.

**BHL NORTHING**  
 591055  
**BHL EASTING**  
 1318844

**BASIS OF BEARING**  
 SPCS CD CENTRAL NAD  
 27, BASED ON NGS TRIG.  
 STATION 'FABER'  
 THE BASIS OF BEARINGS FOR  
 THIS SURVEY IS REFERENCED  
 TO THE SOUTH LINE OF THE  
 SW $\frac{1}{4}$  OF SECTION 17, BEING  
 MOUNTED WITH GLO BC'S  
 AND BEARING N 88° 30' 06" W.

- LEGEND**
- ◆ WELL LOCATION
  - FOUND MONUMENT
  - L DENOTES 90° TIE
  - CALCULATED CORNER
  - APPROXIMATE BHL



**SURVEYOR'S STATEMENT**

I, Ronald C. Rennke, an employee and agent on behalf of D.R. GRIFFIN & ASSOCIATES, INC. state the plat hereon is a correct representation of a survey made under my supervision on June 23, 2008 of the shown RULISON FEDERAL 20-21A Bottom Hole Location.


**NOTES**

GPS OPERATOR FRANK COLLINS  
 OBSERVED A PDOP OF 1.5.  
 ALL GPS OBSERVATIONS ARE IN  
 COMPLIANCE WITH COGCC RULE NO. 215.

HIGH PLATEAU DESERT  
 NO IMPROVEMENTS WITHIN  
 200' RADIUS OF WELL SITE.  
 SURFACE USE IS NATIVE WOODS

37065  
 2/6/09  
*Ronald C. Rennke*  
 COLORADO PLS No. 37065

EXHIBIT 1

 <b>DRG GRIFFIN &amp; ASSOCIATES, INC.</b> (307) 362-5028 1414 ELK ST., ROCK SPRINGS, WY 82901		<b>PLAT OF BOTTOM HOLE LOCATION          FOR          NOBLE ENERGY, INC.</b>	
		<b>123' F/NL &amp; 2007' F/WL, SECTION 20,          T. 7 S., R. 94 W., 6th P.M.          GARFIELD COUNTY, COLORADO</b>	
DATE DRAWN: 5/23/07 KC	SCALE: 1" = 1000'		
REVISED: 11/20/08 WG	JOB No. 15454		
ADDED LEASE LINE	EXHIBIT 1		