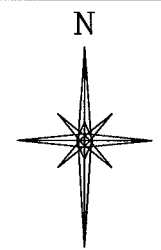
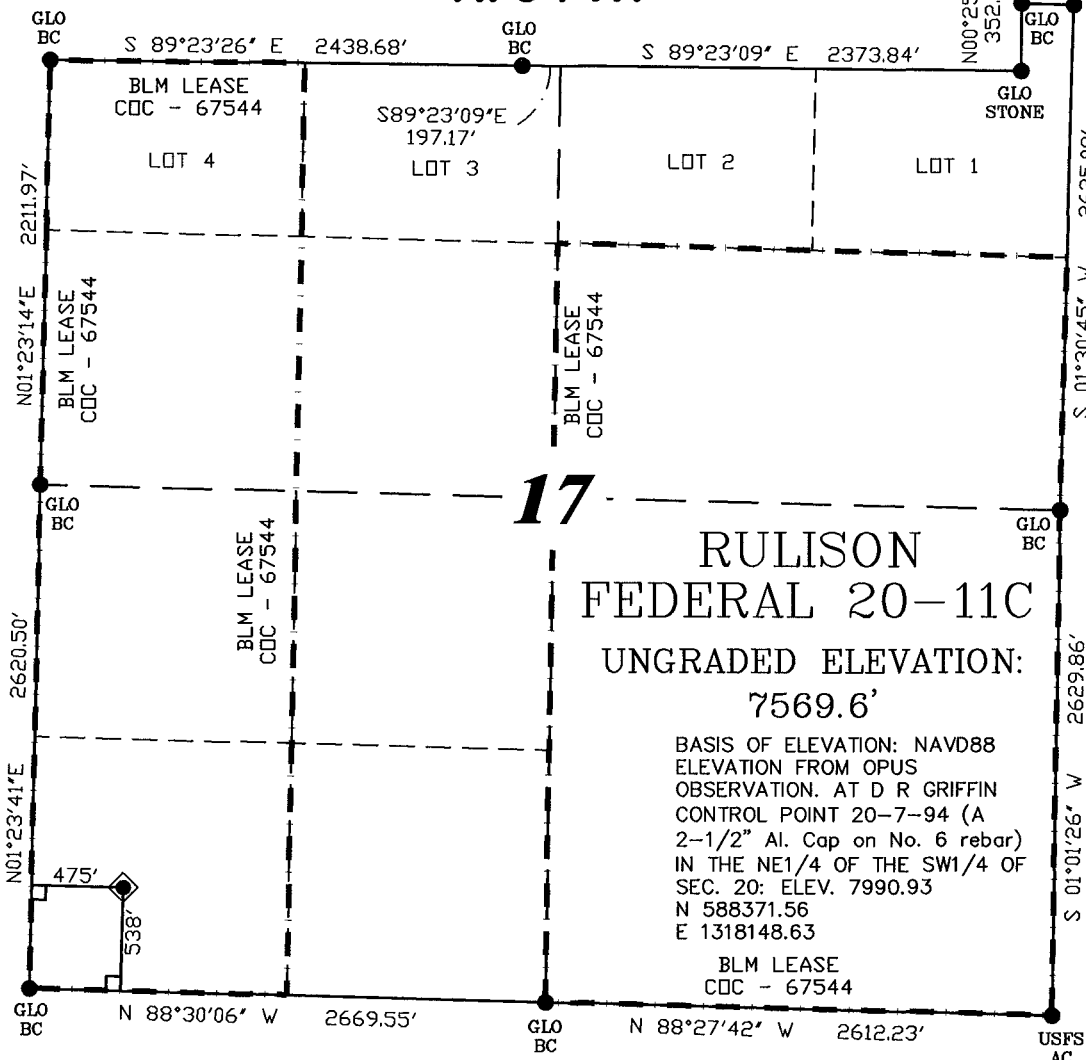


R. 94 W.



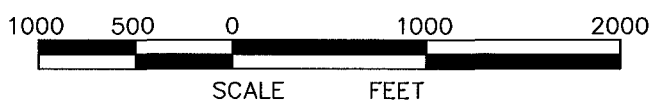
SCALE: 1" = 1000'



T. 7 S.
SHL LATITUDE (NAD 27)
 NORTH 39.433235 DEG.
SHL LONGITUDE (NAD 27)
 WEST 107.917167 DEG.
SHL LATITUDE (NAD 83)
 NORTH 39.433214 DEG.
SHL LONGITUDE (NAD 83)
 WEST 107.917792 DEG.
SHL NORTHING
 591756.14
SHL EASTING
 1317328.84

BASIS OF BEARING
 SPCS CO CENTRAL NAD 27, BASED ON NGS TRIG. STATION "FABER"
 THE BASIS OF BEARINGS FOR THIS SURVEY IS REFERENCED TO THE SOUTH LINE OF THE SW 1/4 OF SECTION 17, BEING MOUNTED WITH GLO BC'S AND BEARING N 88° 30' 06" W.

- LEGEND**
- ◆ WELL LOCATION
 - FOUND MONUMENT
 - L DENOTES 90° TIE
 - CALCULATED CORNER
 - APPROXIMATE BHL



SURVEYOR'S STATEMENT

I, Ronald C. Rennke, an employee and agent on behalf of D.R. GRIFFIN & ASSOCIATES, INC. state the plat hereon is a correct representation of a survey made under my supervision on June 23, 2008 of the shown RULISON FEDERAL 20-11C and that the location has been staked on the ground as shown on the plat.

NOTES

GPS OPERATOR JOHN RICHARDSON
 OBSERVED A PDOP OF 2.3.
 ALL GPS OBSERVATIONS ARE IN COMPLIANCE WITH COGCC RULE NO. 215.
 HIGH PLATEAU DESERT
 NO IMPROVEMENTS WITHIN
 200' RADIUS OF WELL SITE.
 SURFACE USE IS NATIVE WOODS

37065
 2/6/09
Ronald C. Rennke
 COLORADO PLS No. 37065

EXHIBIT 1

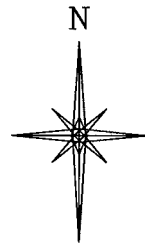
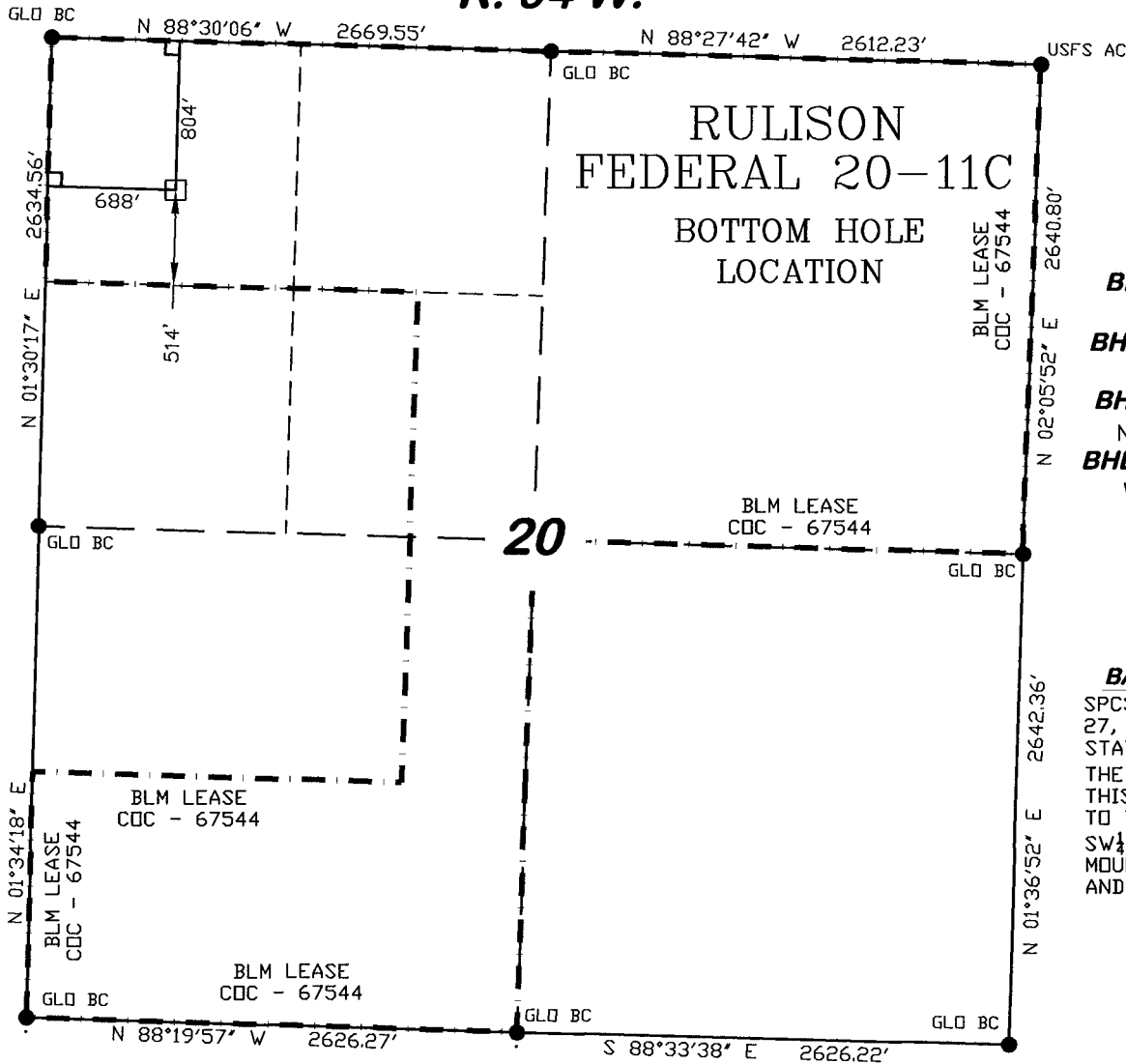
DRG RIFFIN & ASSOCIATES, INC.
 (307) 362-5028 1414 ELK ST., ROCK SPRINGS, WY 82901

PLAT OF DRILLING LOCATION FOR NOBLE ENERGY, INC.

DATE DRAWN: 5/23/07 KC	SCALE: 1" = 1000'
REVISED: 11/20/08 WG	JOB No. 15454
ADDED LEASE LINE	EXHIBIT 1

538' F/SL & 475' F/WL, SECTION 17, T. 7 S., R. 94 W., 6th P.M. GARFIELD COUNTY, COLORADO

R. 94 W.



SCALE: 1" = 1000'

T. 7 S.

BHL LATITUDE (NAD 27)

NORTH 39.429551 DEG.

BHL LONGITUDE (NAD 27)

WEST 107.916410 DEG.

BHL LATITUDE (NAD 83)

NORTH 39.429529 DEG.

BHL LONGITUDE (NAD 83)

WEST 107.917035 DEG.

BHL NORTHING

590409

BHL EASTING

1317507

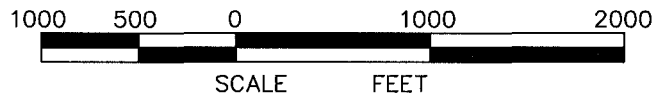
BASIS OF BEARING

SPCS CO CENTRAL NAD 27, BASED ON NGS TRIG. STATION 'FABER'

THE BASIS OF BEARINGS FOR THIS SURVEY IS REFERENCED TO THE SOUTH LINE OF THE SW 1/4 OF SECTION 17, BEING MONUMENTED WITH GLO BC'S AND BEARING N 88° 30' 06" W.

LEGEND

- ◆ WELL LOCATION
- FOUND MONUMENT
- L DENOTES 90° TIE
- CALCULATED CORNER
- APPROXIMATE BHL



SURVEYOR'S STATEMENT

I, Ronald C. Rennke, an employee and agent on behalf of D.R. GRIFFIN & ASSOCIATES, INC. state the plat hereon is a correct representation of a survey made under my supervision on June 23, 2008 of the shown RULISON FEDERAL 20-11C Bottom Hole Location.

NOTES

GPS OPERATOR JOHN RICHARDSON OBSERVED A PDOP OF 2.3.

ALL GPS OBSERVATIONS ARE IN COMPLIANCE WITH COGCC RULE NO. 215.

HIGH PLATEAU DESERT
NO IMPROVEMENTS WITHIN
200' RADIUS OF WELL SITE.
SURFACE USE IS NATIVE WOODS

2/6/09
Ronald C. Rennke
 COLORADO PLS No. 37065

EXHIBIT 1

DRG GRIFFIN & ASSOCIATES, INC.
 (307) 362-5028 1414 ELK ST., ROCK SPRINGS, WY 82901

**PLAT OF BOTTOM HOLE LOCATION
 FOR
 NOBLE ENERGY, INC.**

DATE DRAWN: 5/23/07 KC	SCALE: 1" = 1000'
REVISED: 11/20/08 WG	JOB No. 15454
ADDED LEASE LINE	EXHIBIT 1

**804' F/NL & 688' F/WL, SECTION 20,
 T. 7 S., R. 94 W., 6th P.M.
 GARFIELD COUNTY, COLORADO**