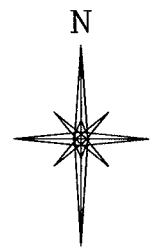
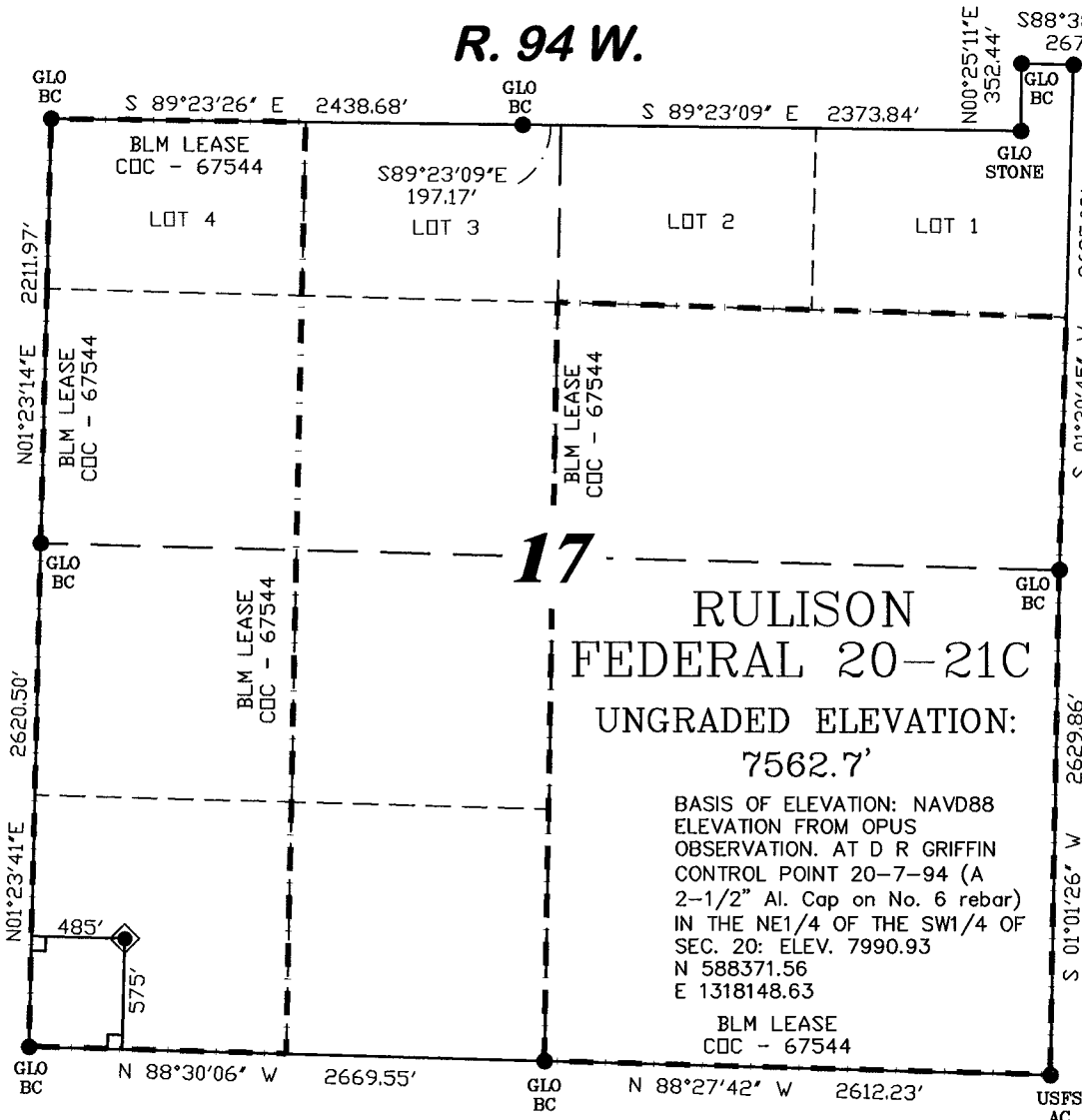


R. 94 W.

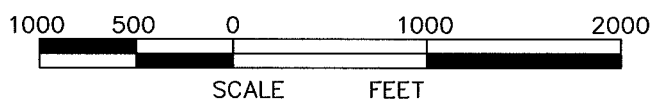


SCALE: 1" = 1000'

T. 7 S.
SHL LATITUDE (NAD 27)
 NORTH 39.433338 DEG.
SHL LONGITUDE (NAD 27)
 WEST 107.917132 DEG.
SHL LATITUDE (NAD 83)
 NORTH 39.433316 DEG.
SHL LONGITUDE (NAD 83)
 WEST 107.917757 DEG.
SHL NORTHING
 591793.28
SHL EASTING
 1317339.79

BASIS OF BEARING
 SPCS CO CENTRAL NAD 27, BASED ON NGS TRIG. STATION 'FABER'
 THE BASIS OF BEARINGS FOR THIS SURVEY IS REFERENCED TO THE SOUTH LINE OF THE SW 1/4 OF SECTION 17, BEING MONUMENTED WITH GLO BC'S AND BEARING N 88° 30' 06" W.

- LEGEND**
- ◆ WELL LOCATION
 - FOUND MONUMENT
 - L DENOTES 90° TIE
 - CALCULATED CORNER
 - APPROXIMATE BHL

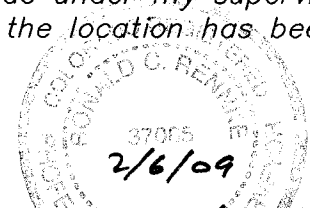


SURVEYOR'S STATEMENT

I, Ronald C. Rennke, an employee and agent on behalf of D.R. GRIFFIN & ASSOCIATES, INC. state the plat hereon is a correct representation of a survey made under my supervision on June 23, 2008 of the shown RULISON FEDERAL 20-21C and that the location has been staked on the ground as shown on the plat.

NOTES

GPS OPERATOR JOHN RICHARDSON OBSERVED A PDOP OF 2.3.
 ALL GPS OBSERVATIONS ARE IN COMPLIANCE WITH COGCC RULE NO. 215.
 HIGH PLATEAU DESERT
 NO IMPROVEMENTS WITHIN 200' RADIUS OF WELL SITE.
 SURFACE USE IS NATIVE WOODS

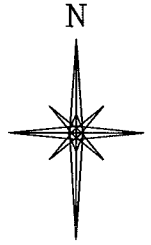
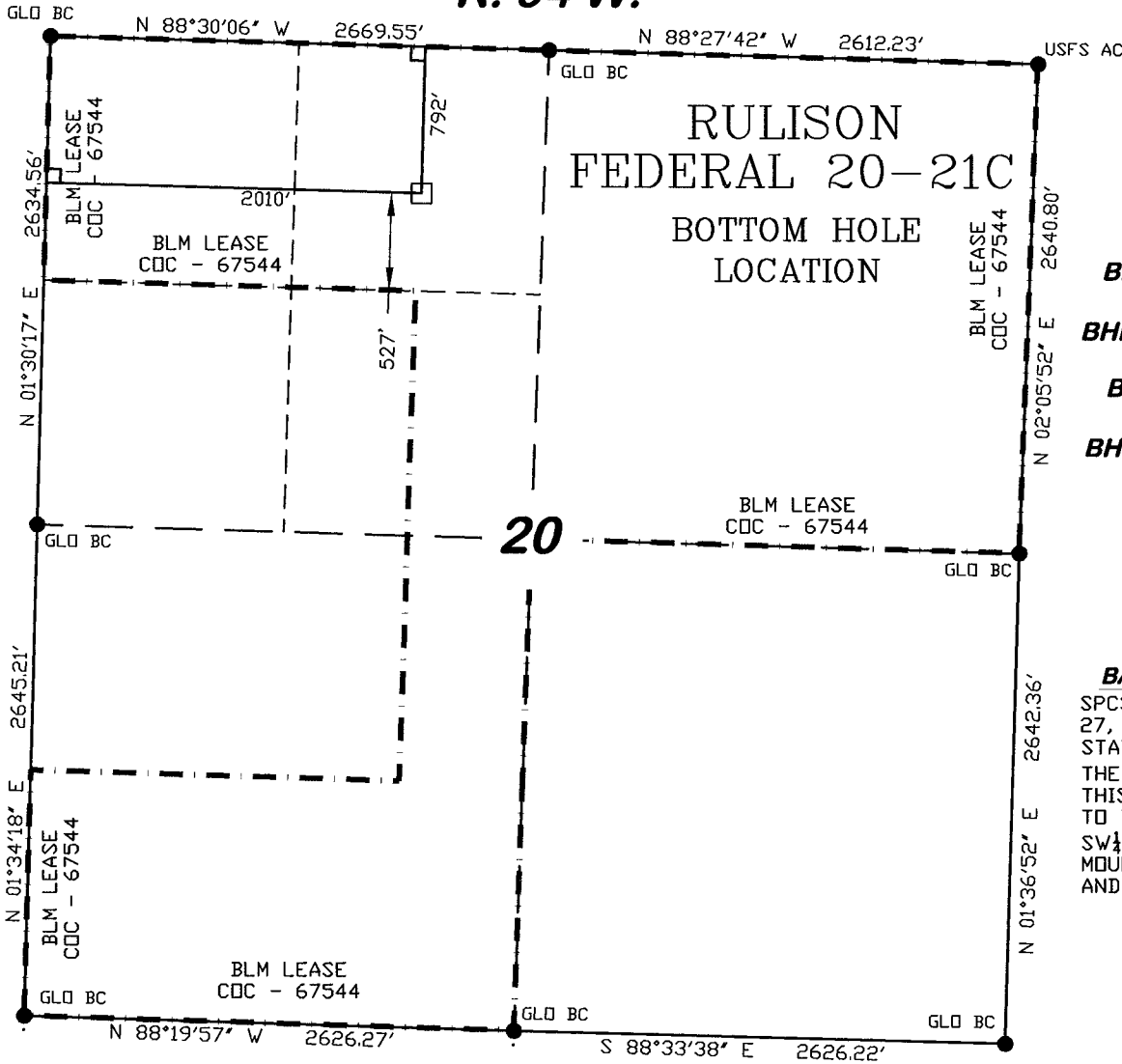


Ronald C. Rennke
 COLORADO PLS No. 37065

EXHIBIT 1

 (307) 362-5028 1414 ELK ST., ROCK SPRINGS, WY 82901		PLAT OF DRILLING LOCATION FOR NOBLE ENERGY, INC.	
		575' F/SL & 485' F/WL, SECTION 17, T. 7 S., R. 94 W., 6th P.M. GARFIELD COUNTY, COLORADO	
DATE DRAWN: 5/23/07 KC	SCALE: 1" = 1000'		
REVISED: 11/20/08 WG	JOB No. 15454		
ADDED LEASE LINE	EXHIBIT 1		

R. 94 W.



SCALE: 1" = 1000'

T. 7 S.

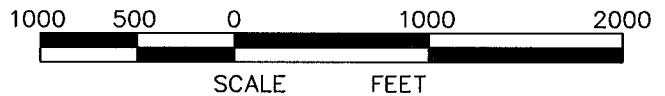
BHL LATITUDE (NAD 27)
NORTH 39.429587 DEG.
BHL LONGITUDE (NAD 27)
WEST 107.911729 DEG.
BHL LATITUDE (NAD 83)
NORTH 39.429565 DEG.
BHL LONGITUDE (NAD 83)
WEST 107.912354 DEG.

BHL NORTHING
590387
BHL EASTING
1318829

BASIS OF BEARING
SPCS CO CENTRAL NAD 27, BASED ON NGS TRIG. STATION 'FABER'
THE BASIS OF BEARINGS FOR THIS SURVEY IS REFERENCED TO THE SOUTH LINE OF THE SW $\frac{1}{4}$ OF SECTION 17, BEING MOUNTED WITH GLO BC'S AND BEARING N 88° 30' 06" W.

LEGEND

- ◆ WELL LOCATION
- FOUND MONUMENT
- L DENOTES 90° TIE
- CALCULATED CORNER
- APPROXIMATE BHL



SURVEYOR'S STATEMENT

I, Ronald C. Rennke, an employee and agent on behalf of D.R. GRIFFIN & ASSOCIATES, INC. state the plat hereon is a correct representation of a survey made under my supervision on June 23, 2008 of the shown RULISON FEDERAL 20-21C Bottom Hole Location.

NOTES

GPS OPERATOR FRANK COLLINS
OBSERVED A PDOP OF 1.5.
ALL GPS OBSERVATIONS ARE IN COMPLIANCE WITH COGCC RULE NO. 215.

HIGH PLATEAU DESERT
NO IMPROVEMENTS WITHIN
200' RADIUS OF WELL SITE.
SURFACE USE IS NATIVE WOODS

37065
2/6/09
Ronald C. Rennke
COLORADO PLS No. 37065

EXHIBIT 1

DRG GRIFFIN & ASSOCIATES, INC.
(307) 362-5028 1414 ELK ST., ROCK SPRINGS, WY 82901

**PLAT OF BOTTOM HOLE LOCATION
FOR
NOBLE ENERGY, INC.**

DATE DRAWN: 5/23/07 KC **SCALE: 1" = 1000'**
REVISED: 11/20/08 WG **JOB No. 15454**
ADDED LEASE LINE **EXHIBIT 1**

**792' F/NL & 2010' F/WL, SECTION 20,
T. 7 S., R. 94 W., 6th P.M.
GARFIELD COUNTY, COLORADO**