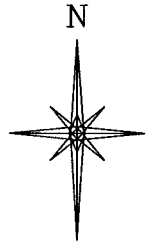
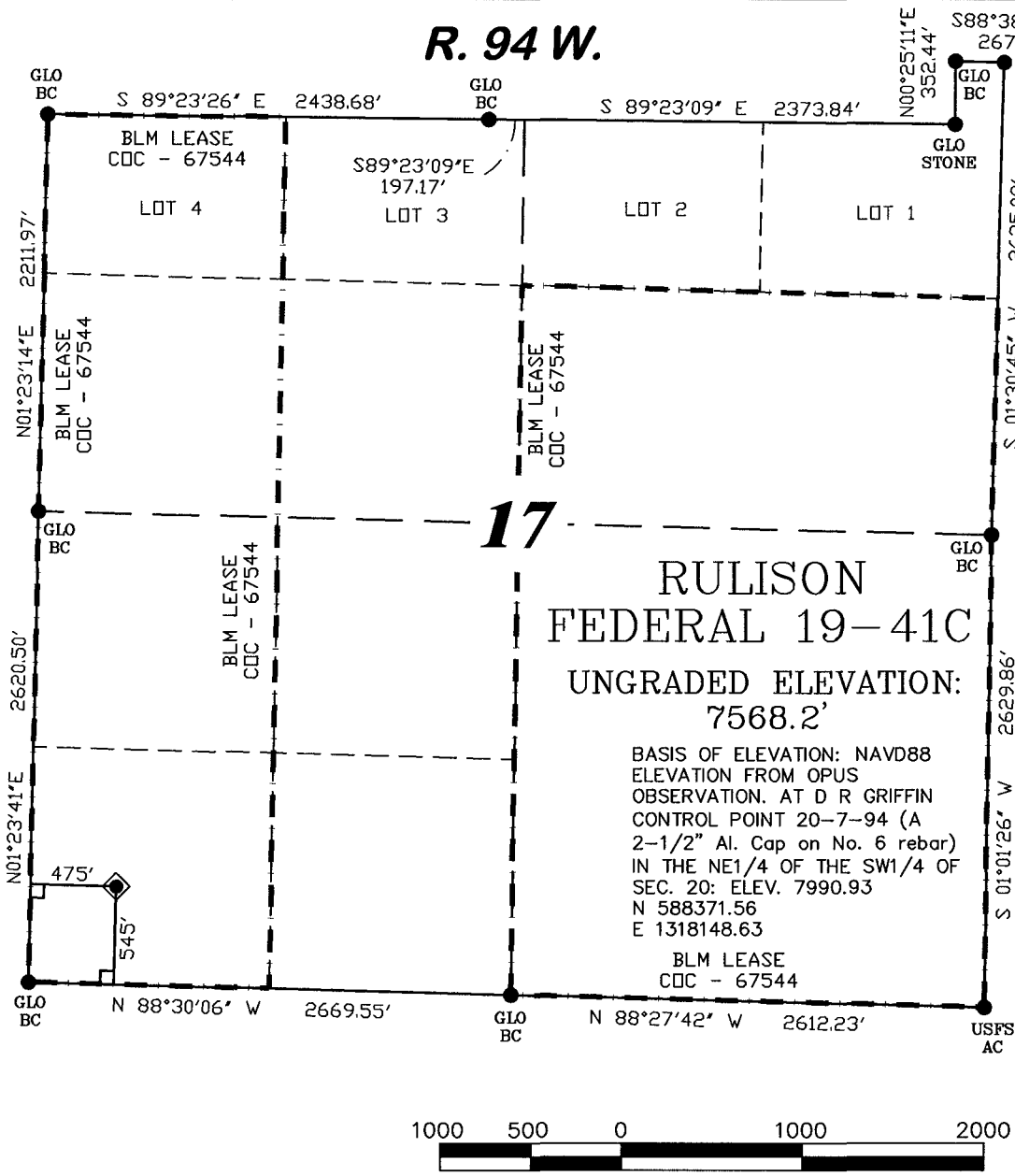


R. 94 W.



SCALE: 1" = 1000'

T. 7 S.

SHL LATITUDE (NAD 27)
NORTH 39.433256 DEG.
SHL LONGITUDE (NAD 27)
WEST 107.917167 DEG.
SHL LATITUDE (NAD 83)
NORTH 39.433234 DEG.
SHL LONGITUDE (NAD 83)
WEST 107.917792 DEG.

SHL NORTHING
591763.66
SHL EASTING
1317329.14

BASIS OF BEARING
SPCS CO CENTRAL NAD 27, BASED ON NGS TRIG. STATION 'FABER'
THE BASIS OF BEARINGS FOR THIS SURVEY IS REFERENCED TO THE SOUTH LINE OF THE SW 1/4 OF SECTION 17, BEING MONUMENTED WITH GLO BC'S AND BEARING N 88° 30' 06" W.

LEGEND

- ◆ WELL LOCATION
- FOUND MONUMENT
- └ DENOTES 90° TIE
- CALCULATED CORNER
- APPROXIMATE BHL

17
RULISON FEDERAL 19-41C
UNGRADED ELEVATION:
7568.2'
BASIS OF ELEVATION: NAVD88
ELEVATION FROM OPUS
OBSERVATION. AT D R GRIFFIN
CONTROL POINT 20-7-94 (A
2-1/2" Al. Cap on No. 6 rebar)
IN THE NE1/4 OF THE SW1/4 OF
SEC. 20: ELEV. 7990.93
N 588371.56
E 1318148.63

SURVEYOR'S STATEMENT

I, Ronald C. Rennke, an employee and agent on behalf of D.R. GRIFFIN & ASSOCIATES, INC. state the plat hereon is a correct representation of a survey made under my supervision on June 23, 2008 of the shown RULISON FEDERAL 19-41C and that the location has been staked on the ground as shown on the plat.

NOTES

- GPS OPERATOR JOHN RICHARDSON OBSERVED A PDOP OF 2.3.
- ALL GPS OBSERVATIONS ARE IN COMPLIANCE WITH COGCC RULE NO. 215.
- HIGH PLATEAU DESERT
- NO IMPROVEMENTS WITHIN 200' RADIUS OF WELL SITE.
- SURFACE USE IS NATIVE WOODS

2/6/09
Ronald C. Rennke
COLORADO PLS No. 37065

EXHIBIT 1

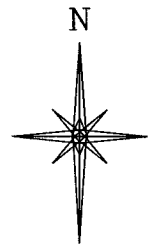
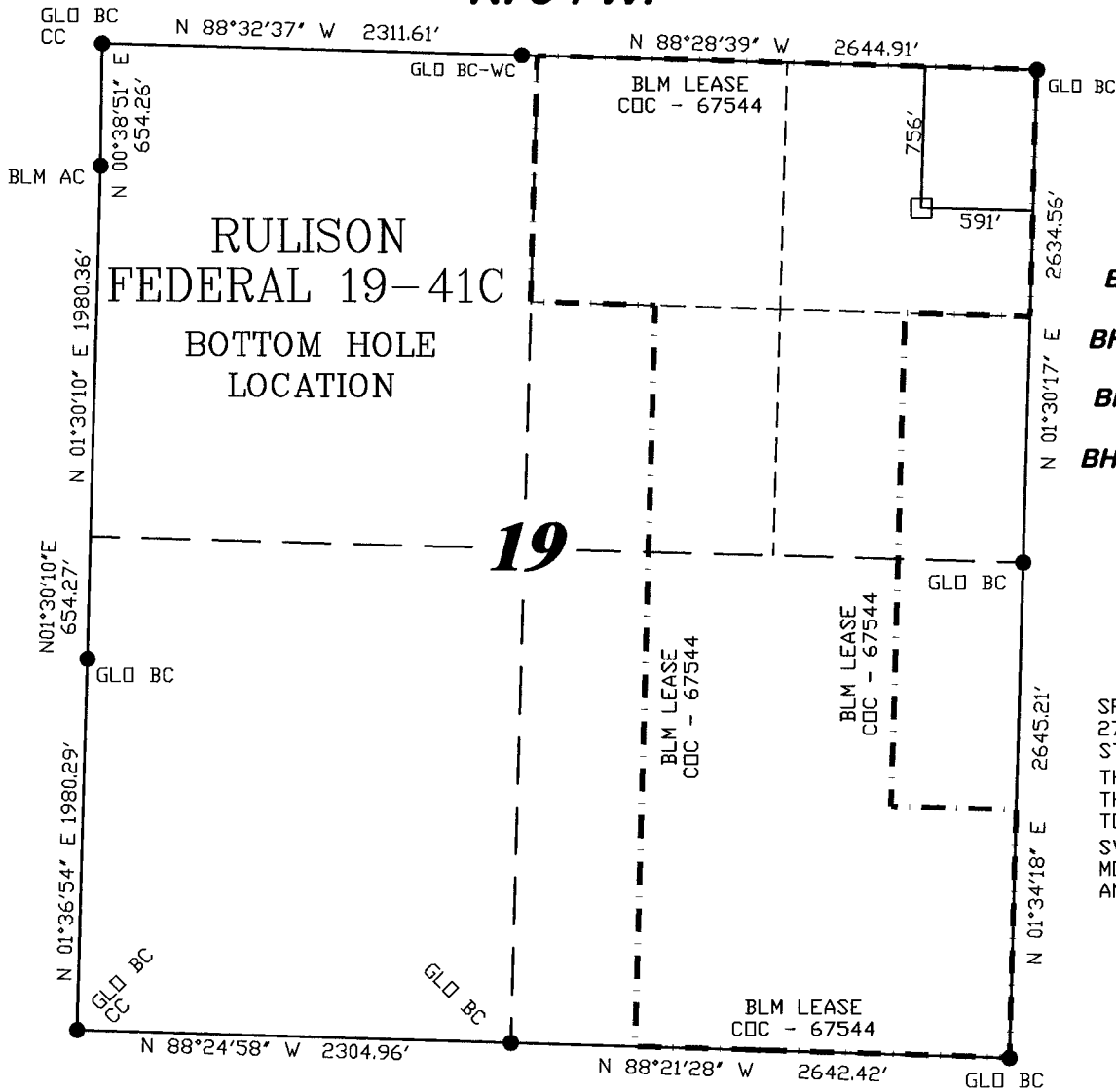
DRG RIFFIN & ASSOCIATES, INC.
(307) 382-5028 1414 ELK ST., ROCK SPRINGS, WY 82901

DATE DRAWN: 5/23/07 KC	SCALE: 1" = 1000'
REVISED: 11/20/08 WG	JOB No. 15454
ADDED LEASE LINE	EXHIBIT 1

PLAT OF DRILLING LOCATION FOR NOBLE ENERGY, INC.

545' F/SL & 475' F/WL, SECTION 17, T. 7 S., R. 94 W., 6th P.M. GARFIELD COUNTY, COLORADO

R. 94 W.



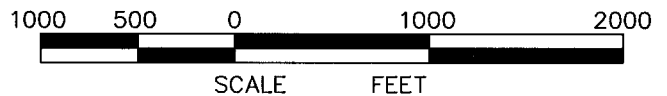
SCALE: 1" = 1000'

T. 7 S.

BHL LATITUDE (NAD 27)
NORTH 39.429683 DEG.
BHL LONGITUDE (NAD 27)
WEST 107.920937 DEG.
BHL LATITUDE (NAD 83)
NORTH 39.429662 DEG.
BHL LONGITUDE (NAD 83)
WEST 107.921562 DEG.
BHL NORTHING
590491
BHL EASTING
1316230

BASIS OF BEARING
SPCS CD CENTRAL NAD 27, BASED ON NGS TRIG. STATION "FABER"
THE BASIS OF BEARINGS FOR THIS SURVEY IS REFERENCED TO THE SOUTH LINE OF THE SW $\frac{1}{4}$ OF SECTION 17, BEING MOUNTED WITH GLO BC'S AND BEARING N 88° 30' 06" W.

- LEGEND**
- ◆ WELL LOCATION
 - FOUND MONUMENT
 - L DENOTES 90° TIE
 - CALCULATED CORNER
 - APPROXIMATE BHL



SURVEYOR'S STATEMENT

I, Ronald C. Rennke, an employee and agent on behalf of D.R. GRIFFIN & ASSOCIATES, INC. state the plat hereon is a correct representation of a survey made under my supervision on June 23, 2008 of the shown RULISON FEDERAL 19-41C Bottom Hole Location.

NOTES

- GPS OPERATOR JOHN RICHARDSON OBSERVED A PDOP OF 2.3.
- ALL GPS OBSERVATIONS ARE IN COMPLIANCE WITH COGCC RULE NO. 215.
- HIGH PLATEAU DESERT
- NO IMPROVEMENTS WITHIN 200' RADIUS OF WELL SITE.
- SURFACE USE IS NATIVE WOODS

2/6/09
Ronald C. Rennke
 COLORADO PLS No. 37065

EXHIBIT 1

DRG RIFFIN & ASSOCIATES, INC.
 (307) 362-5028 1414 ELK ST., ROCK SPRINGS, WY 82901

PLAT OF BOTTOM HOLE LOCATION FOR NOBLE ENERGY, INC.

DATE DRAWN: 5/23/07 KC	SCALE: 1" = 1000'
REVISED: 11/20/08 WG	JOB No. 15454
ADDED LEASE LINE	EXHIBIT 1

756' F/NL & 591' F/EL, SECTION 19, T. 7 S., R. 94 W., 6th P.M. GARFIELD COUNTY, COLORADO