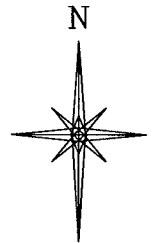
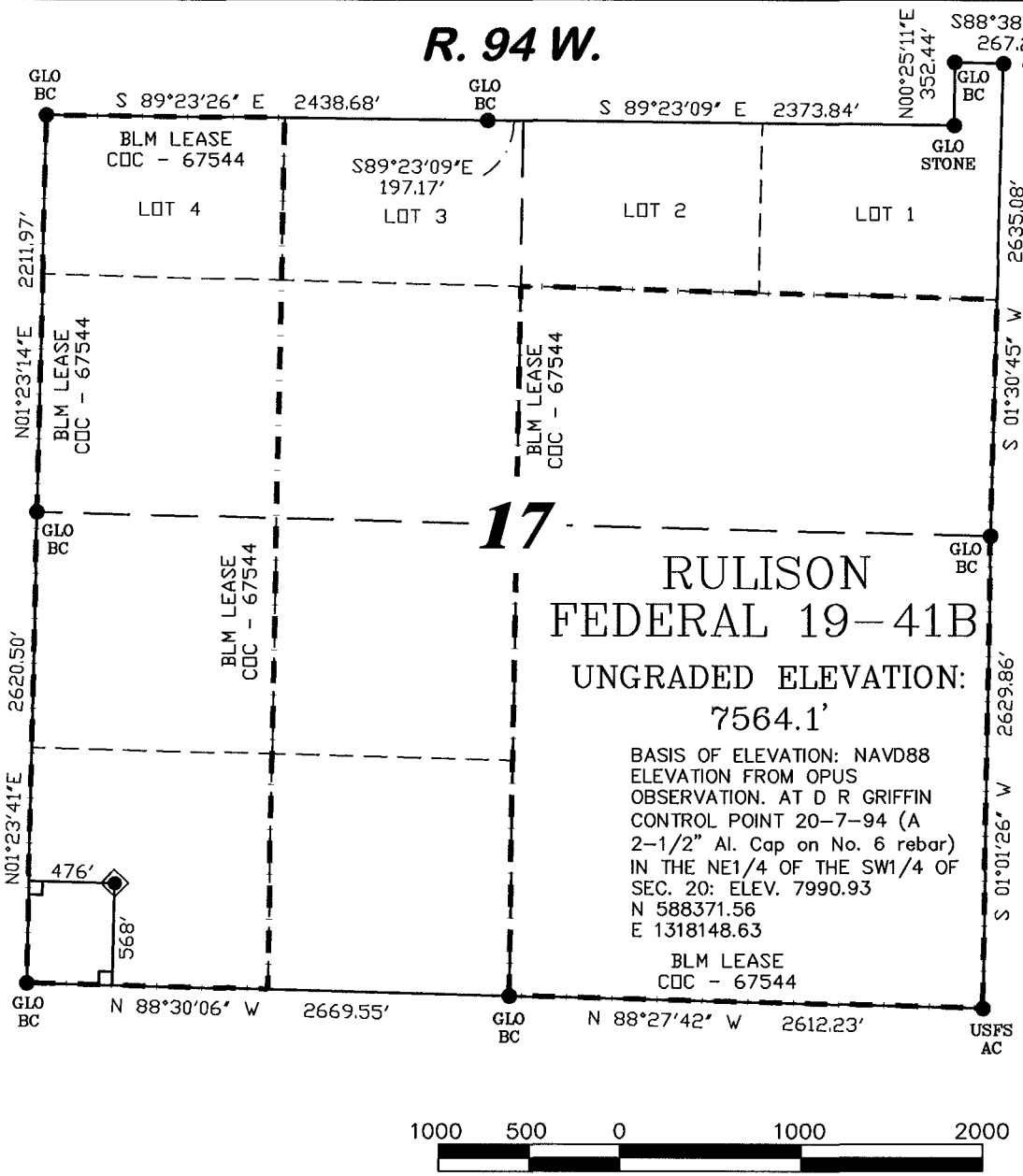


R. 94 W.



SCALE: 1" = 1000'

T. 7 S.

SHL LATITUDE (NAD 27)
NORTH 39.433317 DEG.
SHL LONGITUDE (NAD 27)
WEST 107.917166 DEG.
SHL LATITUDE (NAD 83)
NORTH 39.433296 DEG.
SHL LONGITUDE (NAD 83)
WEST 107.917791 DEG.
SHL NORTHING
591786.15
SHL EASTING
1317330.01

BASIS OF BEARING
SPCS CD CENTRAL NAD 27, BASED ON NGS TRIG. STATION "FABER"
THE BASIS OF BEARINGS FOR THIS SURVEY IS REFERENCED TO THE SOUTH LINE OF THE SW 1/4 OF SECTION 17, BEING MONUMENTED WITH GLO BC'S AND BEARING N 88° 30' 06" W.

LEGEND

- ◆ WELL LOCATION
- FOUND MONUMENT
- L DENOTES 90° TIE
- CALCULATED CORNER
- APPROXIMATE BHL

SURVEYOR'S STATEMENT

I, Ronald C. Rennke, an employee and agent on behalf of D.R. GRIFFIN & ASSOCIATES, INC. state the plat hereon is a correct representation of a survey made under my supervision on June 23, 2008 of the shown RULISON FEDERAL 19-41B and that the location has been staked on the ground as shown on the plat.

NOTES

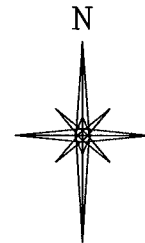
- GPS OPERATOR JOHN RICHARDSON OBSERVED A PDOP OF 2.3.
- ALL GPS OBSERVATIONS ARE IN COMPLIANCE WITH COGCC RULE NO. 215.
- HIGH PLATEAU DESERT NO IMPROVEMENTS WITHIN 200' RADIUS OF WELL SITE. SURFACE USE IS NATIVE WOODS

2/6/09
Ronald C. Rennke
COLORADO PLS No. 37065

EXHIBIT 1

DRG RIFFIN & ASSOCIATES, INC. (307) 362-6028 1414 ELK ST., ROCK SPRINGS, WY 82901		PLAT OF DRILLING LOCATION FOR NOBLE ENERGY, INC.	
DATE DRAWN: 5/23/07 KC	SCALE: 1" = 1000'	568' F/SL & 476' F/WL, SECTION 17, T. 7 S., R. 94 W., 6th P.M. GARFIELD COUNTY, COLORADO	
REVISED: 11/20/08 WG	JOB No. 15454		
ADDED LEASE LINE	EXHIBIT 1		

R. 94 W.



SCALE: 1" = 1000'

T. 7 S.

BHL LATITUDE (NAD 27)

NORTH 39.430490 DEG.

BHL LONGITUDE (NAD 27)

WEST 107.920911 DEG.

BHL LATITUDE (NAD 83)

NORTH 39.430469 DEG.

BHL LONGITUDE (NAD 83)

WEST 107.921536 DEG.

BHL NORTHING

590785

BHL EASTING

1316245

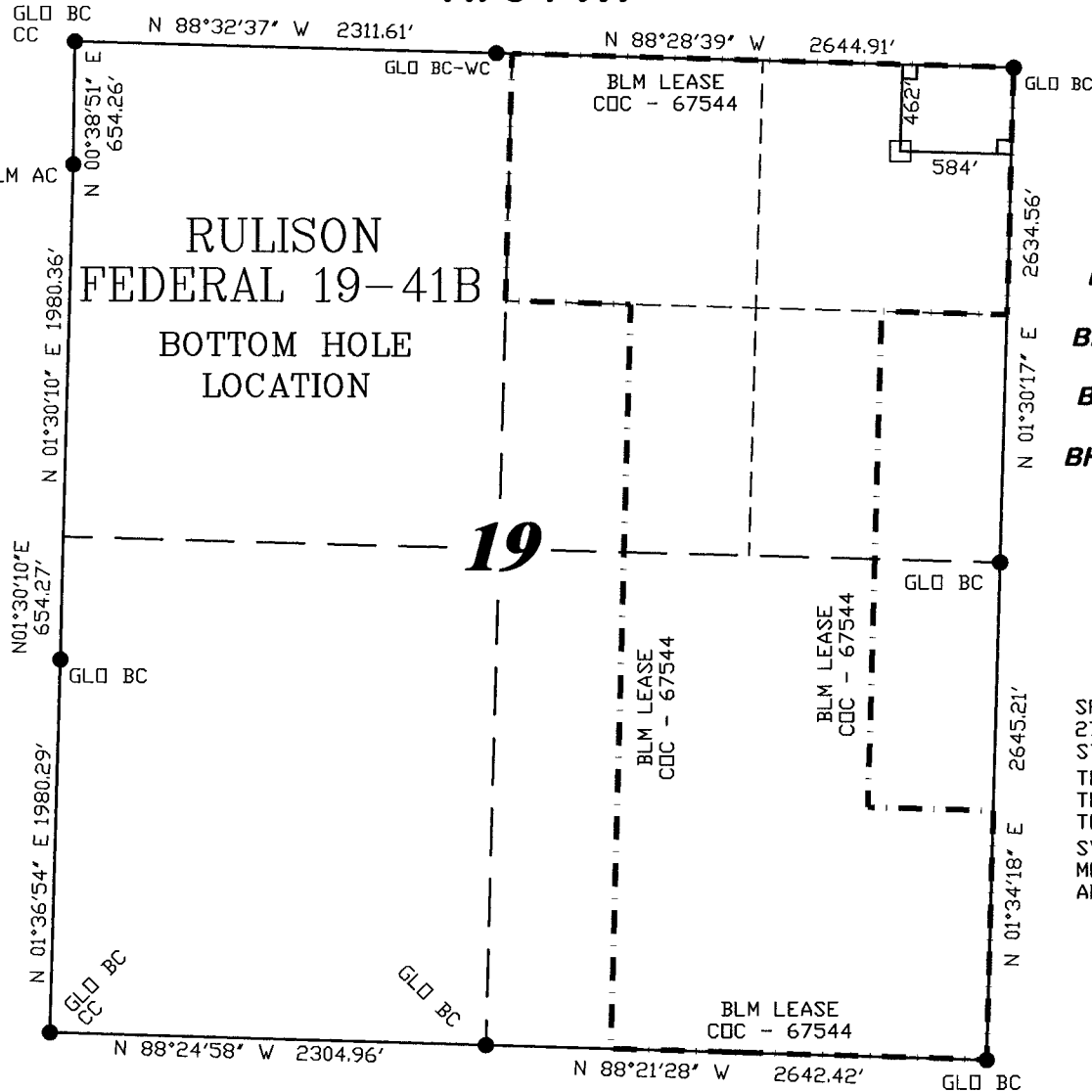
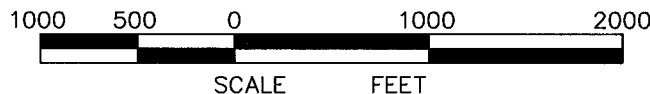
BASIS OF BEARING

SPCS CO CENTRAL NAD
27, BASED ON NGS TRIG.
STATION "FABER"

THE BASIS OF BEARINGS FOR
THIS SURVEY IS REFERENCED
TO THE SOUTH LINE OF THE
SW $\frac{1}{4}$ OF SECTION 17, BEING
MOUNTED WITH GLO BC'S
AND BEARING N 88° 30' 06" W.

LEGEND

- ◆ WELL LOCATION
- FOUND MONUMENT
- L DENOTES 90° TIE
- CALCULATED CORNER
- APPROXIMATE BHL



SURVEYOR'S STATEMENT

I, Ronald C. Rennke, an employee and agent on behalf of D.R. GRIFFIN & ASSOCIATES, INC. state the plat hereon is a correct representation of a survey made under my supervision on June 23, 2008 of the shown RULISON FEDERAL 19-41B Bottom Hole Location.

NOTES

GPS OPERATOR JOHN RICHARDSON
OBSERVED A PDOF OF 2.3.

ALL GPS OBSERVATIONS ARE IN
COMPLIANCE WITH COGCC RULE NO. 215.

HIGH PLATEAU DESERT
NO IMPROVEMENTS WITHIN
200' RADIUS OF WELL SITE.
SURFACE USE IS NATIVE WOODS

2/6/09
Ronald C. Rennke
COLORADO PLS No. 37065

EXHIBIT 1



GRIFFIN & ASSOCIATES, INC.
1414 ELK ST., ROCK SPRINGS, WY 82901

(307) 362-5028

**PLAT OF BOTTOM HOLE LOCATION
FOR
NOBLE ENERGY, INC.**

DATE DRAWN: 5/23/07 KC

SCALE: 1" = 1000'

REVISED: 11/20/08 WG

JOB No. 15454

ADDED LEASE LINE

EXHIBIT 1

**462' F/NL & 584' F/EL, SECTION 19,
T. 7 S., R. 94 W., 6th P.M.
GARFIELD COUNTY, COLORADO**