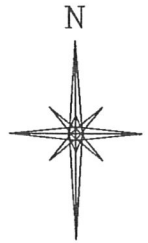
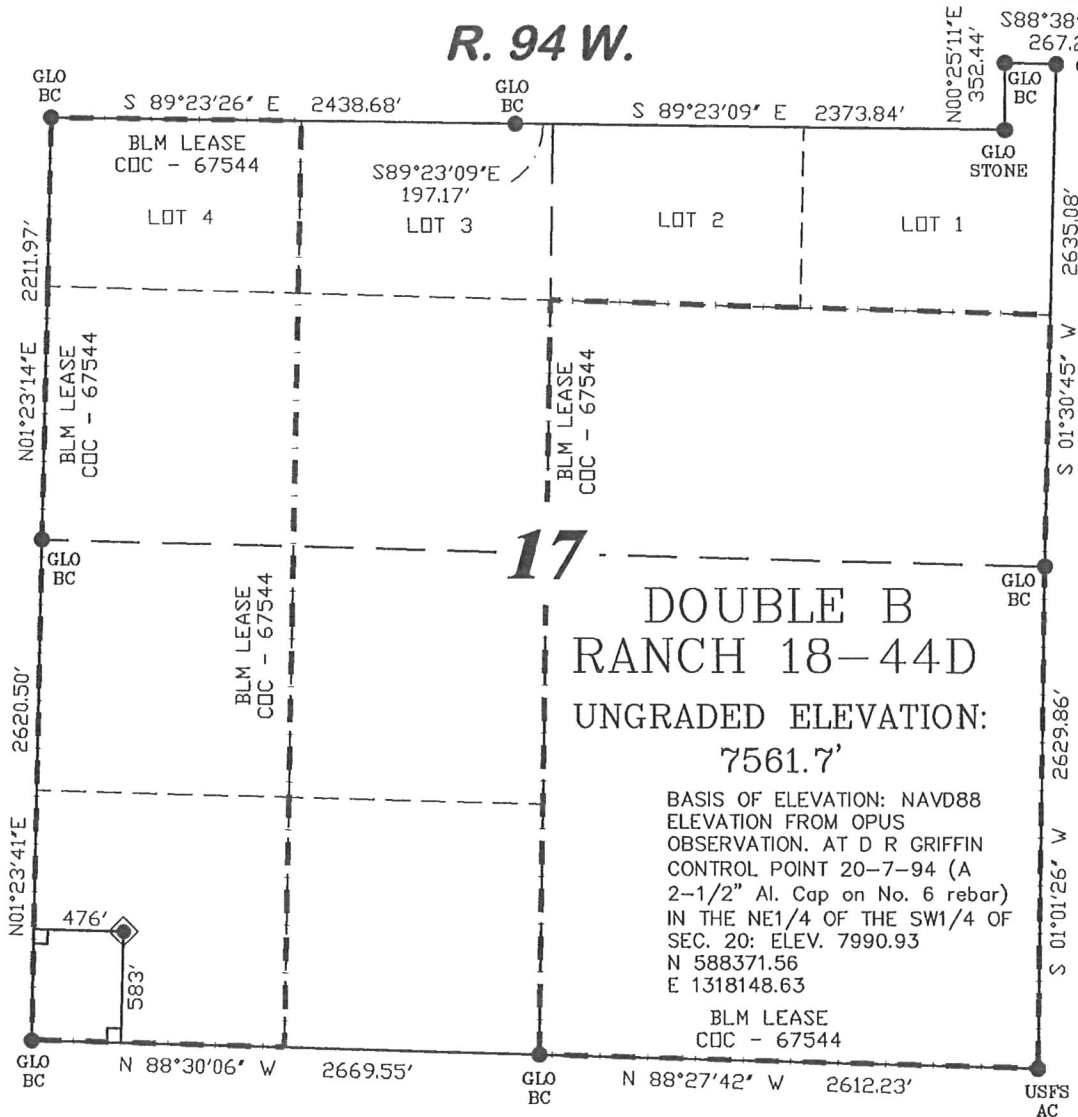


**R. 94 W.**



SCALE: 1" = 1000'

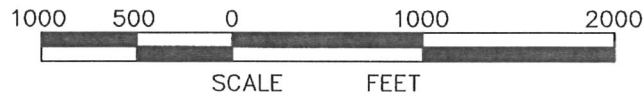
**T. 7 S.**  
**SHL LATITUDE (NAD 27)**  
 NORTH 39.433358 DEG.  
**SHL LONGITUDE (NAD 27)**  
 WEST 107.917165 DEG.  
**SHL LATITUDE (NAD 83)**  
 NORTH 39.433337 DEG.  
**SHL LONGITUDE (NAD 83)**  
 WEST 107.917790 DEG.  
**SHL NORTHING**  
 591801.14  
**SHL EASTING**  
 1317330.59

**BASIS OF BEARING**  
 SPCS CO CENTRAL NAD 27, BASED ON NGS TRIG. STATION 'FABER'  
 THE BASIS OF BEARINGS FOR THIS SURVEY IS REFERENCED TO THE SOUTH LINE OF THE SW<sup>1</sup>/<sub>4</sub> OF SECTION 17, BEING MOUNTED WITH GLO BC'S AND BEARING N 88° 30' 06" W.

**DOUBLE B RANCH 18-44D**  
 UNGRADED ELEVATION:  
 7561.7'

BASIS OF ELEVATION: NAVD88  
 ELEVATION FROM OPUS OBSERVATION. AT D R GRIFFIN CONTROL POINT 20-7-94 (A 2-1/2" Al. Cap on No. 6 rebar) IN THE NE1/4 OF THE SW1/4 OF SEC. 20: ELEV. 7990.93  
 N 588371.56  
 E 1318148.63

- LEGEND**
- ◆ WELL LOCATION
  - FOUND MONUMENT
  - L DENOTES 90° TIE
  - CALCULATED CORNER
  - APPROXIMATE BHL



**SURVEYOR'S STATEMENT**

I, Ronald C. Rennke, an employee and agent on behalf of D.R. GRIFFIN & ASSOCIATES, INC. state the plat hereon is a correct representation of a survey made under my supervision on June 23, 2008 of the shown DOUBLE B RANCH 18-44D and that the location has been staked on the ground as shown on the plat.

**NOTES**

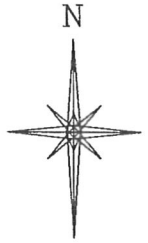
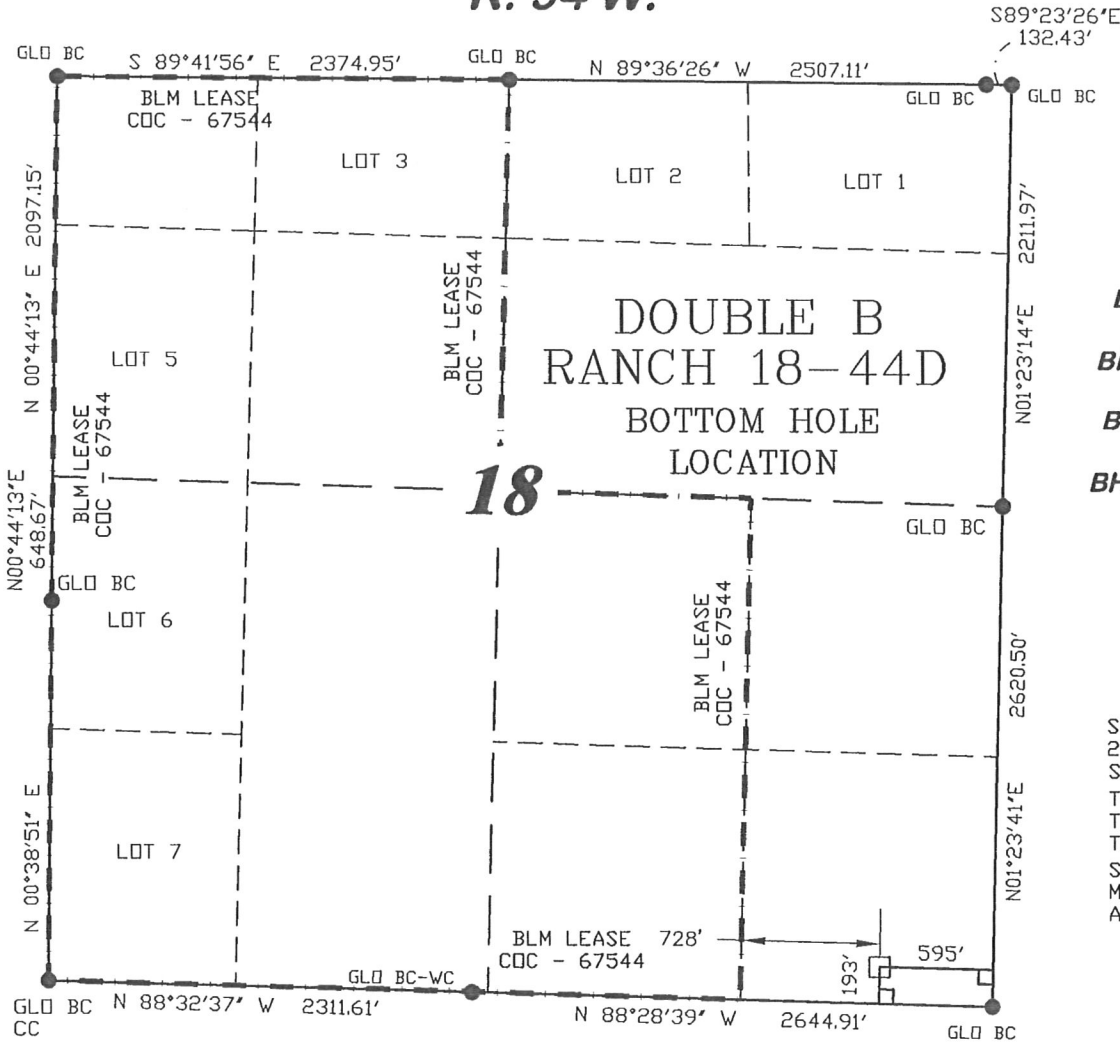
GPS OPERATOR JOHN RICHARDSON  
 OBSERVED A PDOP OF 2.3.  
 ALL GPS OBSERVATIONS ARE IN COMPLIANCE WITH COGCC RULE NO. 215.  
 HIGH PLATEAU DESERT  
 NO IMPROVEMENTS WITHIN  
 200' RADIUS OF WELL SITE.  
 SURFACE USE IS NATIVE WOODS

2/6/09  
*Ronald C. Rennke*  
 COLORADO PLS No. 37065

EXHIBIT 1

<p><b>DRG RIFFIN &amp; ASSOCIATES, INC.</b>                  (307) 362-5028 1414 ELK ST., ROCK SPRINGS, WY 82901</p>		<p><b>PLAT OF DRILLING LOCATION FOR NOBLE ENERGY, INC.</b></p>	
		<p><b>583' F/SL &amp; 476' F/WL, SECTION 17, T. 7 S., R. 94 W., 6th P.M. GARFIELD COUNTY, COLORADO</b></p>	
DATE DRAWN: 5/23/07 KC	SCALE: 1" = 1000'		
REVISED: 11/20/08 WG	JOB No. 15454		
ADDED LEASE LINE	EXHIBIT 1		

**R. 94 W.**

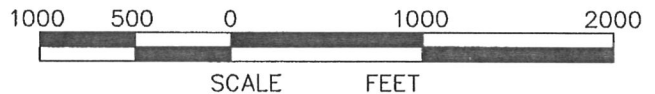


SCALE: 1" = 1000'  
**T. 7 S.**

**BHL LATITUDE (NAD 27)**  
NORTH 39.432287 DEG.  
**BHL LONGITUDE (NAD 27)**  
WEST 107.920952 DEG.  
**BHL LATITUDE (NAD 83)**  
NORTH 39.432266 DEG.  
**BHL LONGITUDE (NAD 83)**  
WEST 107.921577 DEG.  
**BHL NORTHING**  
591439  
**BHL EASTING**  
1316251

**BASIS OF BEARING**  
SPCS CO CENTRAL NAD 27, BASED ON NGS TRIG. STATION 'FABER'  
THE BASIS OF BEARINGS FOR THIS SURVEY IS REFERENCED TO THE SOUTH LINE OF THE SW $\frac{1}{4}$  OF SECTION 17, BEING MOUNTED WITH GLO BC'S AND BEARING N 88° 30' 06" W.

- LEGEND**
- ◆ WELL LOCATION
  - FOUND MONUMENT
  - L DENOTES 90° TIE
  - CALCULATED CORNER
  - APPROXIMATE BHL



**SURVEYOR'S STATEMENT**

I, Ronald C. Rennke, an employee and agent on behalf of D.R. GRIFFIN & ASSOCIATES, INC. state the plat hereon is a correct representation of a survey made under my supervision on June 23, 2008 of the shown DOUBLE B RANCH 18-44D Bottom Hole Location.

**NOTES**


GPS OPERATOR JOHN RICHARDSON OBSERVED A PDOP OF 2.3.

ALL GPS OBSERVATIONS ARE IN COMPLIANCE WITH COGCC RULE NO. 215.

HIGH PLATEAU DESERT  
NO IMPROVEMENTS WITHIN  
200' RADIUS OF WELL SITE.  
SURFACE USE IS NATIVE WOODS

2/6/09  
*Ronald C. Rennke*  
COLORADO PLS No. 37065

EXHIBIT 1

 <b>DRG GRIFFIN &amp; ASSOCIATES, INC.</b> (307) 362-5028 1414 ELK ST., ROCK SPRINGS, WY 82901	<b>PLAT OF BOTTOM HOLE LOCATION FOR NOBLE ENERGY, INC.</b>		
	DATE DRAWN: 5/23/07 KC	SCALE: 1" = 1000'	<b>193' F/SL &amp; 595' F/EL, SECTION 18, T. 7 S., R. 94 W., 6th P.M. GARFIELD COUNTY, COLORADO</b>
	REVISED: 11/20/08 WG	JOB No. 15454	
ADDED LEASE LINE	EXHIBIT 1		