

[illegible]

Date Created: 7-APR-2010 18:04:03

Depth Measuring Device

Type:	IDW-B
Serial Number:	799
Calibration Date:	1-Oct-2009
Calibrator Serial Number:	33
Calibration Cable Type:	7-46P
Wheel Correction 1:	-4
Wheel Correction 2:	-5

Type: CMTD-B/A
Serial Number: 1223
Calibration Date: 27-Mar-10
Calibrator Serial Number: 100513
Number of Calibration Points: 0

Type:	7-39P LXS
Serial Number:	708273
Length:	16760 FT
<hr/>	
Conveyance Method:	Wireline
Rig Type:	LAND

Log Sequence:	First Log In the Well
Rig Up Length At Surface:	0.00 FT
Rig Up Length At Bottom:	0.00 FT
Rig Up Length Correction:	0.00 FT
Stretch Correction:	5.50 FT
Tool Zero Check At Surface:	0.00 FT

1. All Schlumberger depth policy procedures applied
2. This is the primary depth reference
- 3.
- 4.
- 5.
- 6.

THE USE OF AND RELIANCE UPON THIS RECORDED-DATA BY THE HEREIN NAMED COMPANY (AND ANY OF ITS AFFILIATES, PARTNERS, REPRESENTATIVES, AGENTS, CONSULTANTS AND EMPLOYEES) IS SUBJECT TO THE TERMS AND CONDITIONS AGREED UPON BETWEEN SCHLUMBERGER AND THE COMPANY, INCLUDING: (a) RESTRICTIONS ON USE OF THE RECORDED-DATA; (b) DISCLAIMERS AND WAIVERS OF WARRANTIES AND REPRESENTATIONS REGARDING COMPANY'S USE OF AND RELIANCE UPON THE RECORDED-DATA; AND (c) CUSTOMER'S FULL AND SOLE RESPONSIBILITY FOR ANY INFERENCE DRAWN OR DECISION MADE IN CONNECTION WITH THE USE OF THIS RECORDED-DATA.

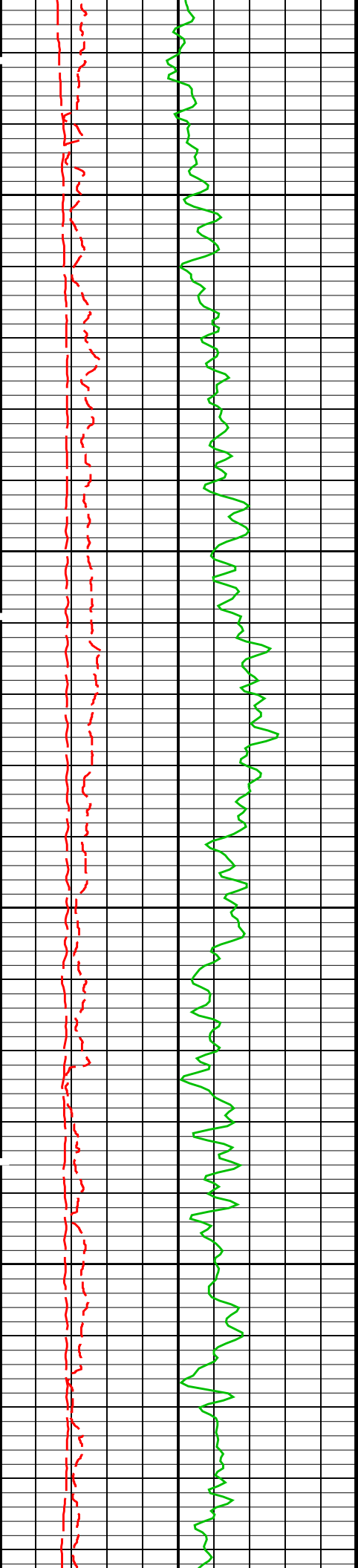
OS1:	None
OS2:	
OS3:	
OS4:	
OS5:	

OS1:
OS2:
OS3:
OS4:
OS5:

1. This is the first run in hole.
2. Tool run as per tool sketch.
3. Matrix changes are as noted on porosity log.
4. Toolstring run with minimum jewelry.

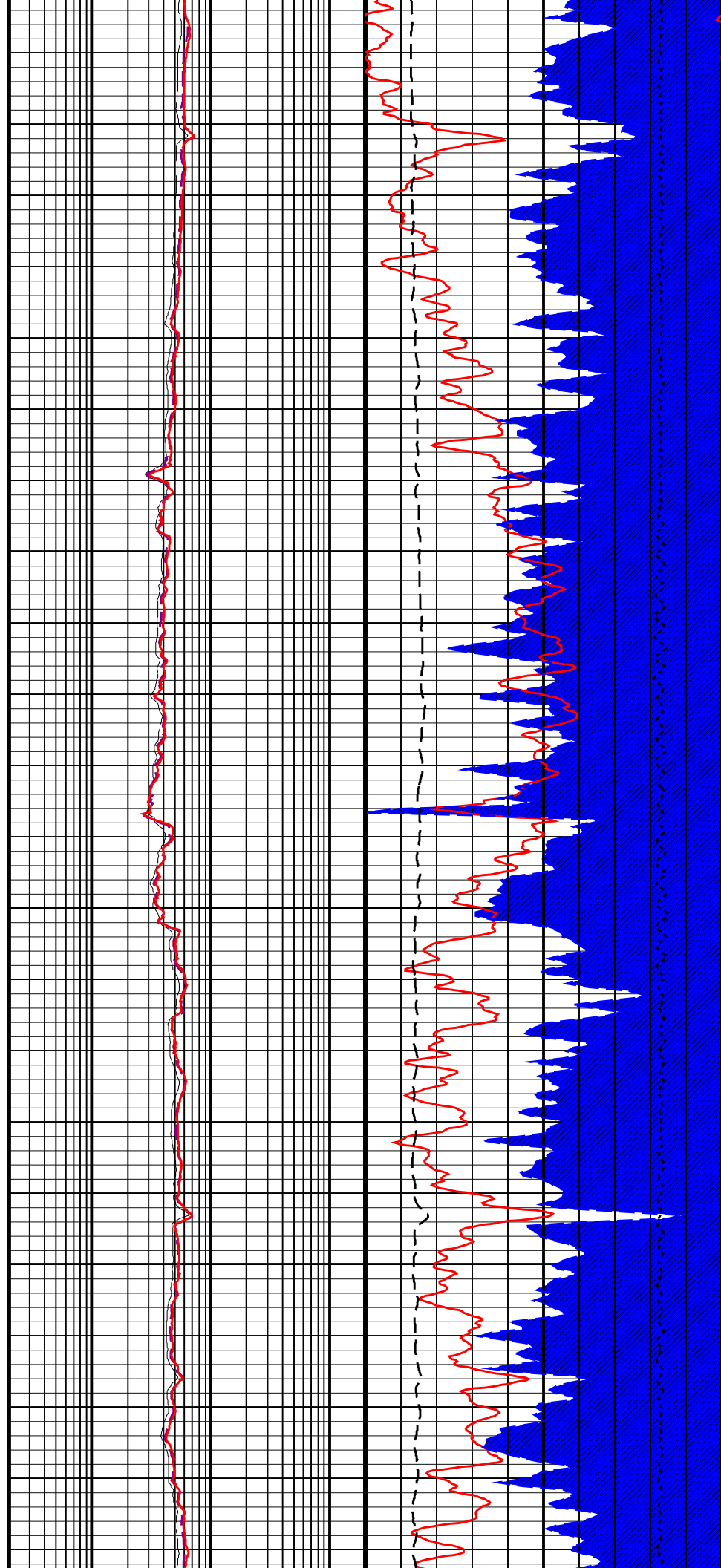
MAXIMUM STRING DIAMETER 4.63 IN
MEASUREMENTS RELATIVE TO TOOL ZERO
ALL LENGTHS IN FEET

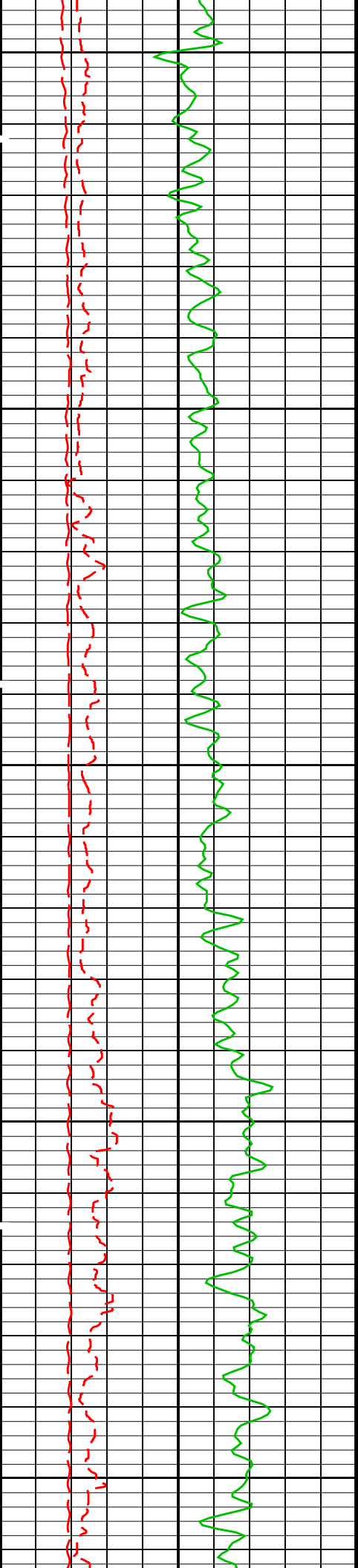
Production String	(in)	(ft)		Well Schematic	(ft)	(in)	Casing String
	OD	ID	MD		MD	OD	ID
					0.0	8.625	<div>Boresight Segment</div> <div>Casing Shoe</div>
					706.0	8.625	



2800

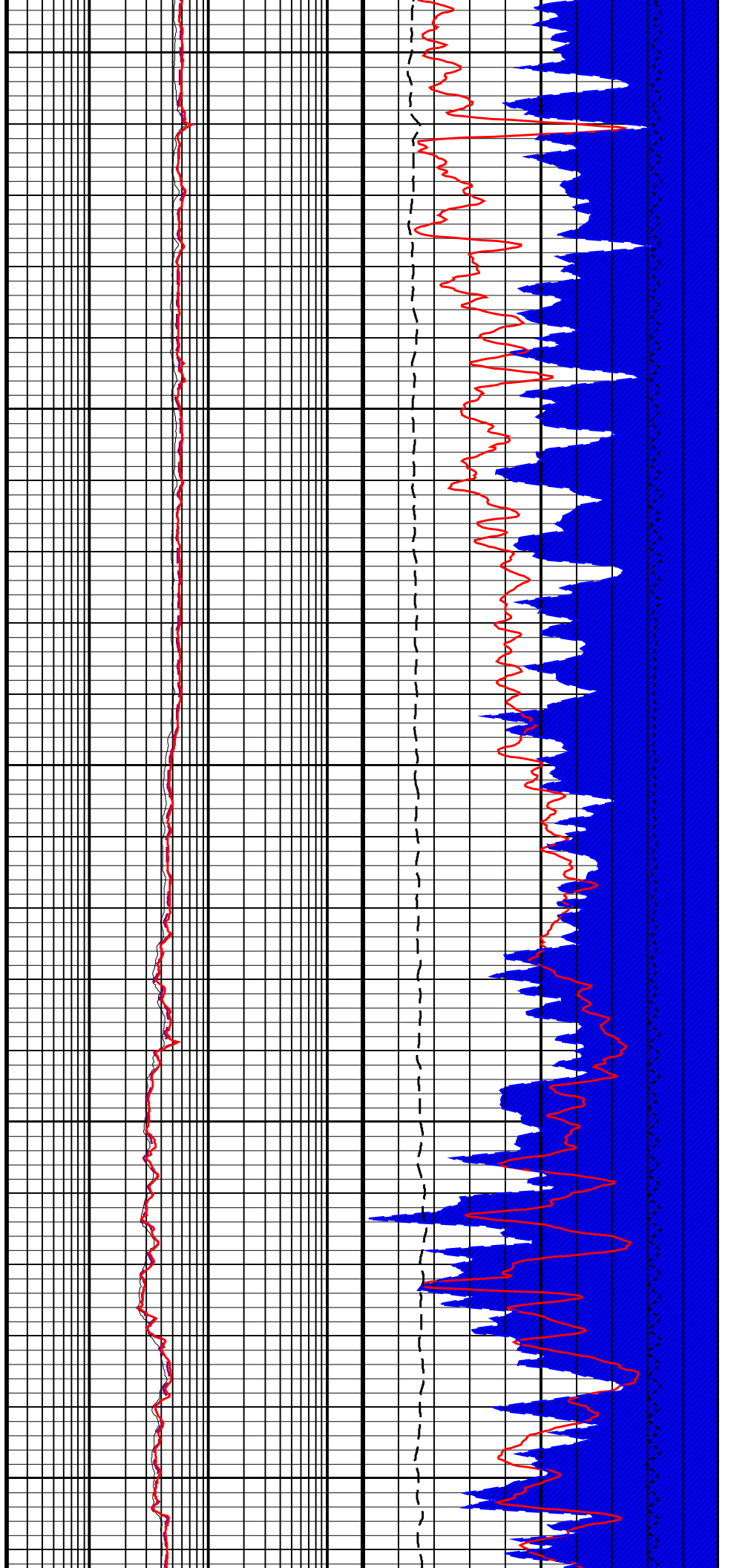
2900

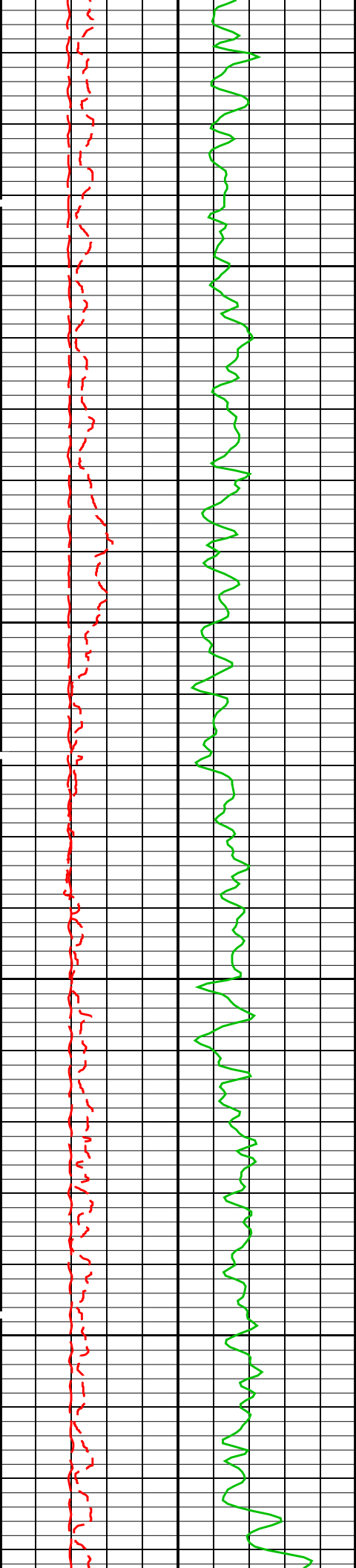




3000

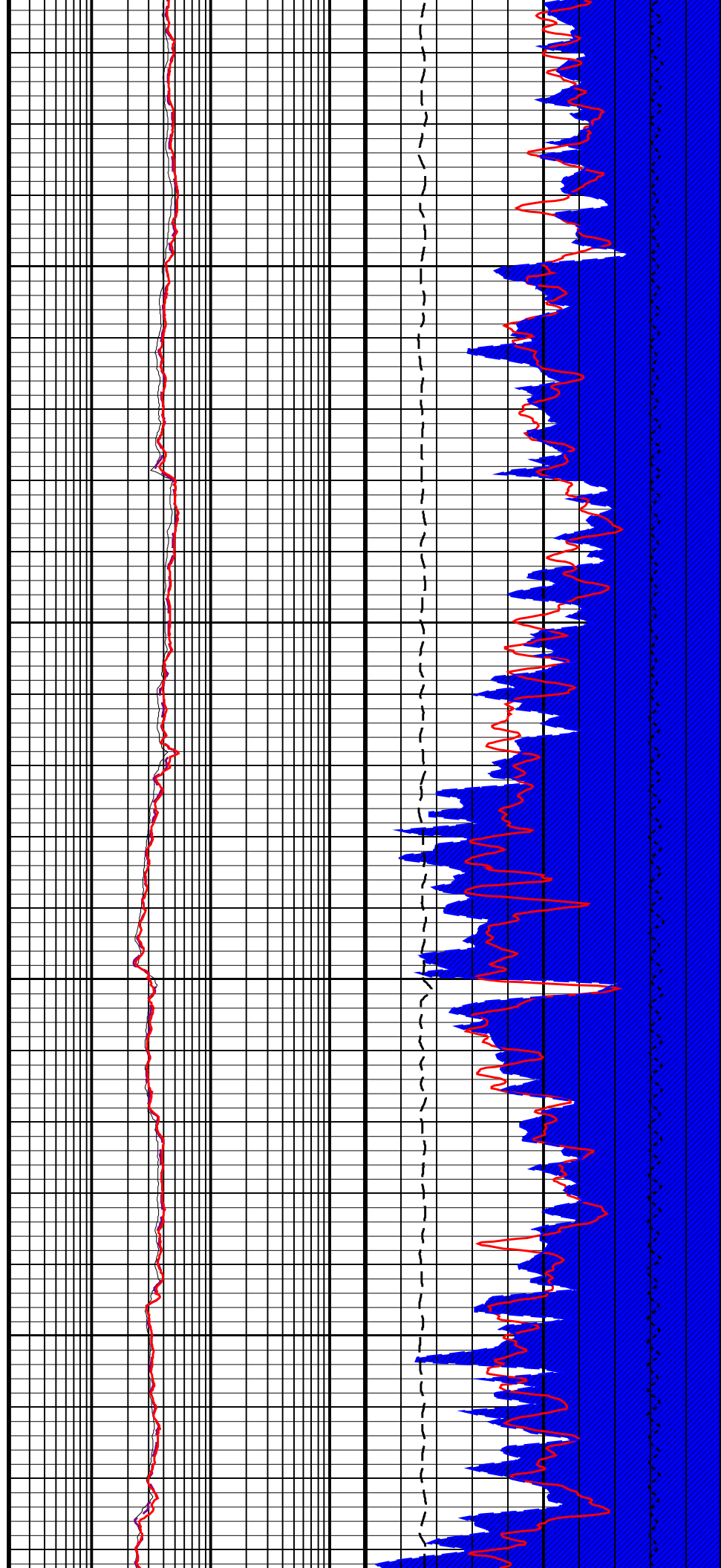
3100

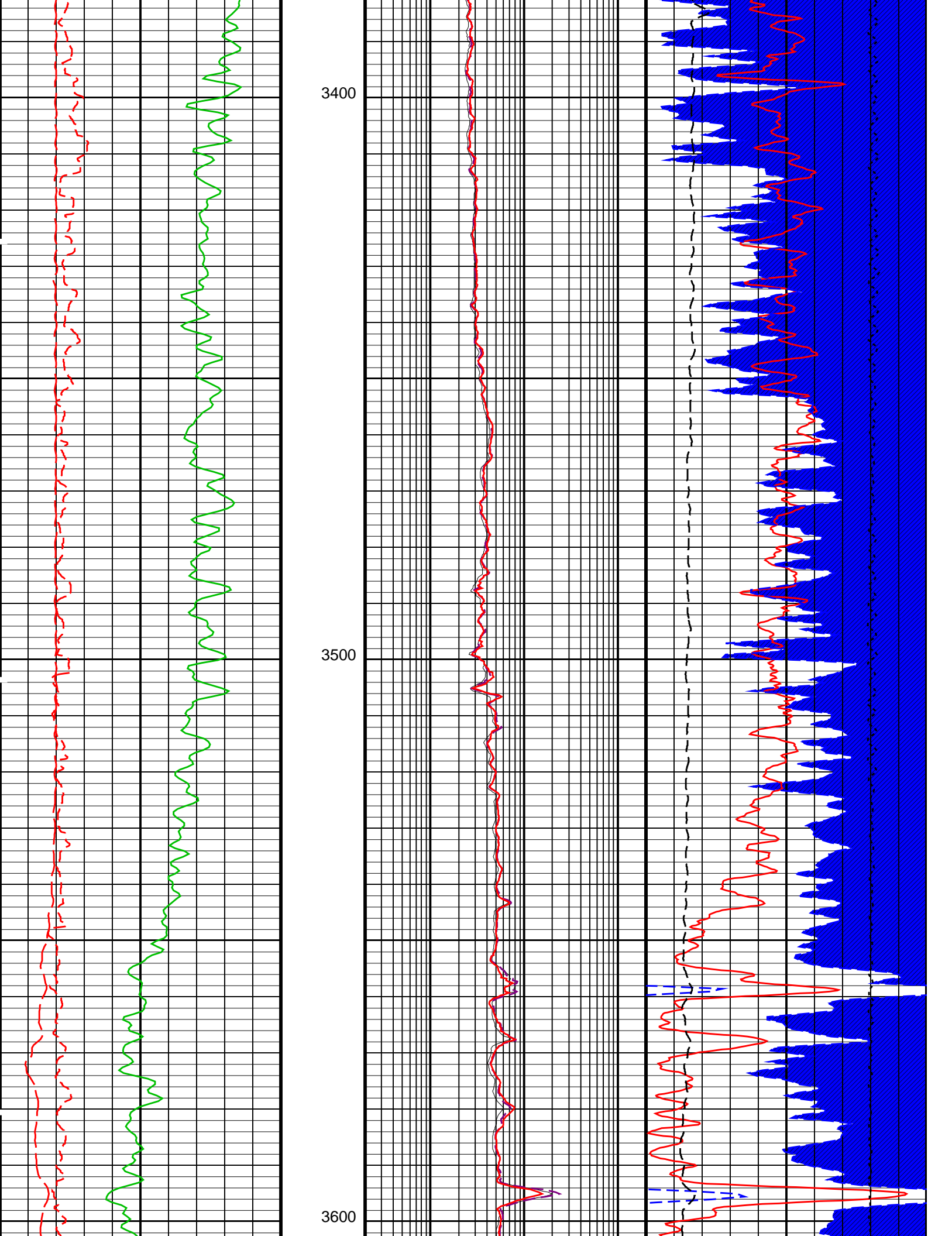


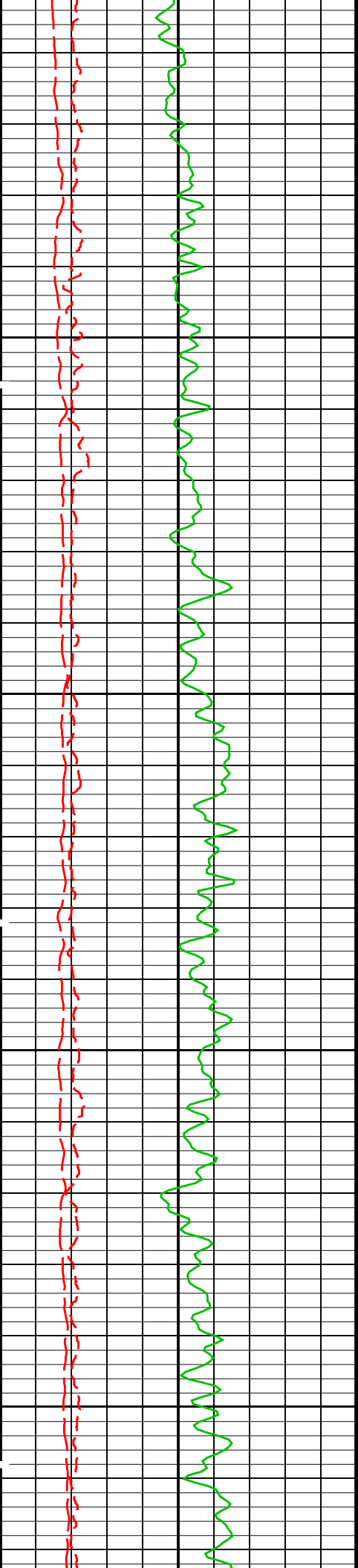


3200

3300

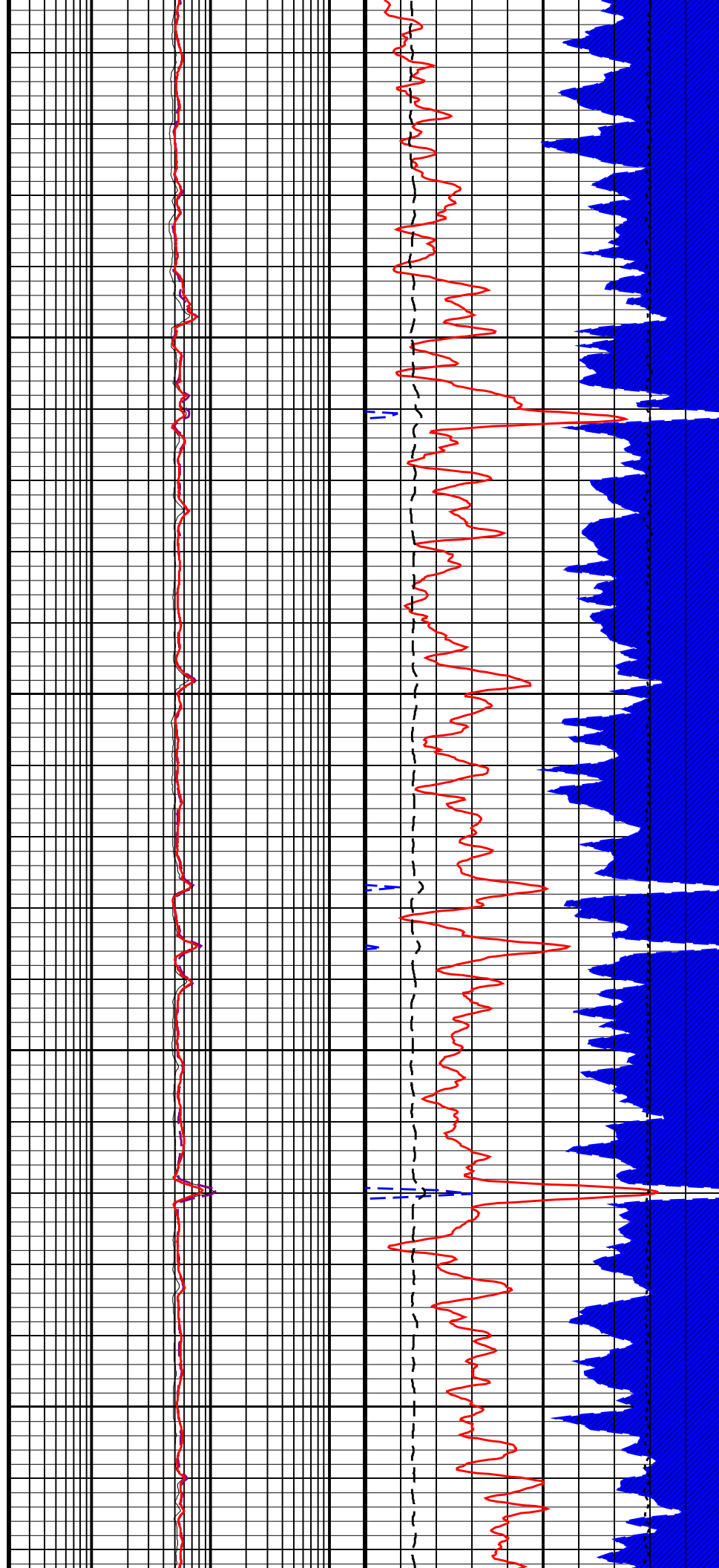


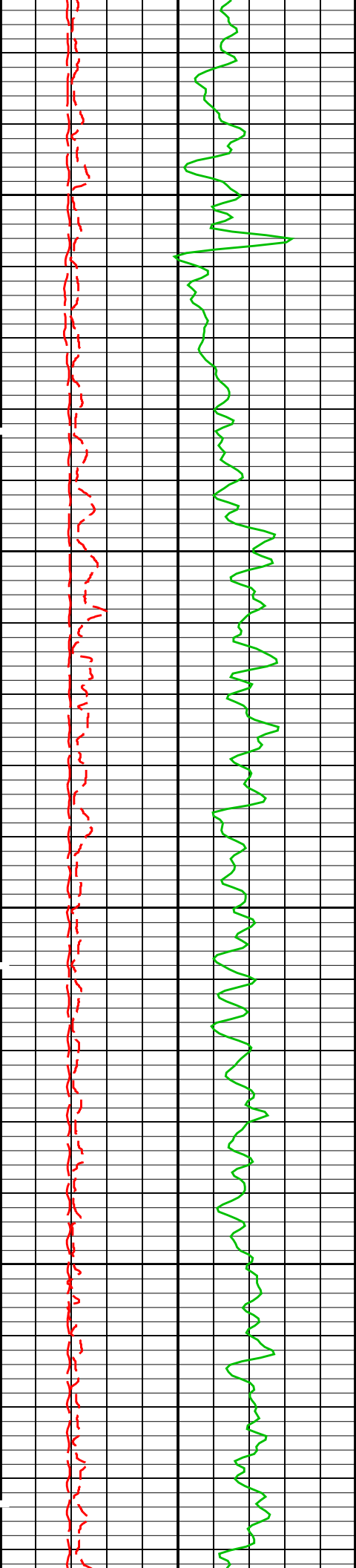




3700

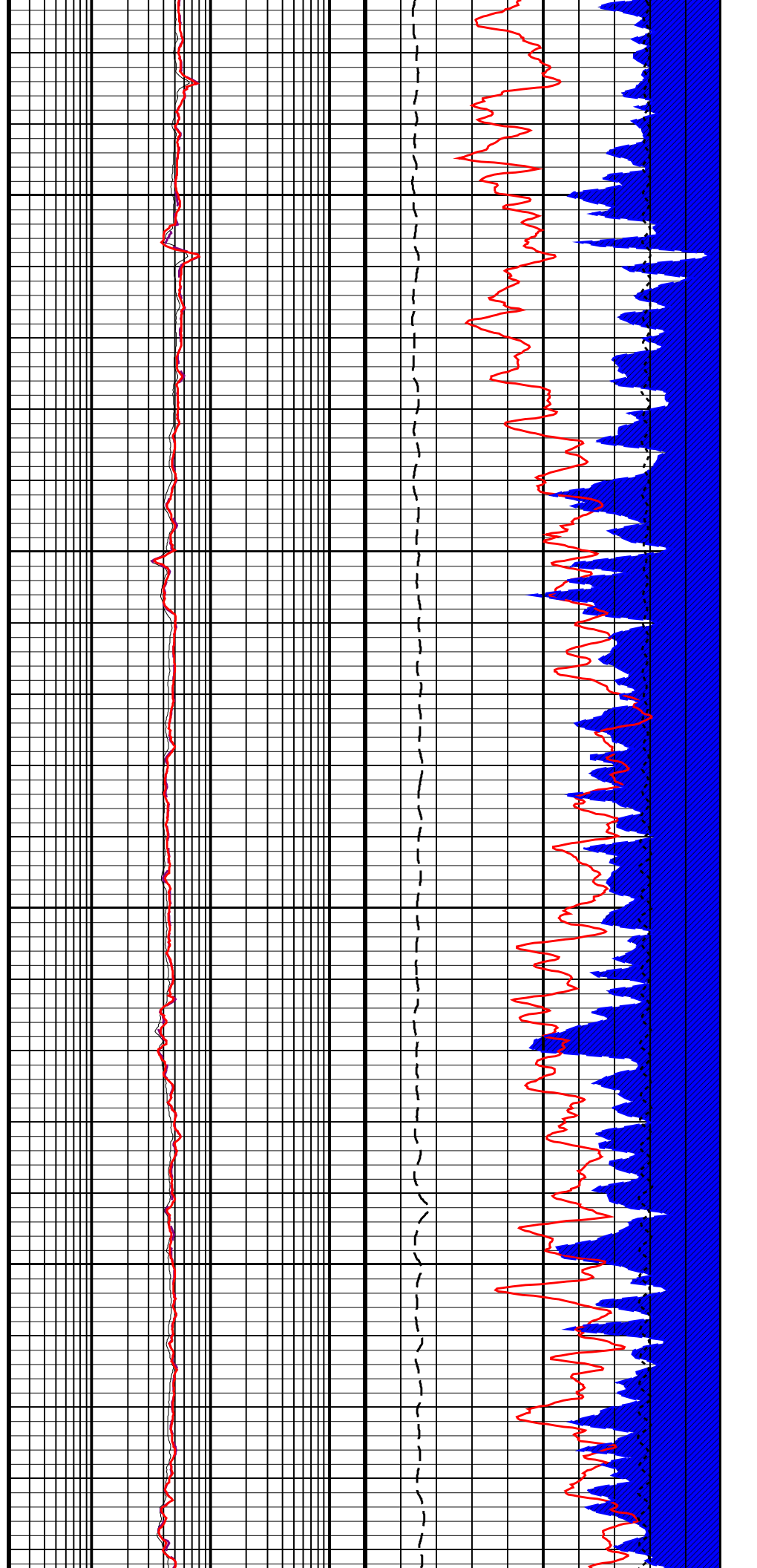
3800

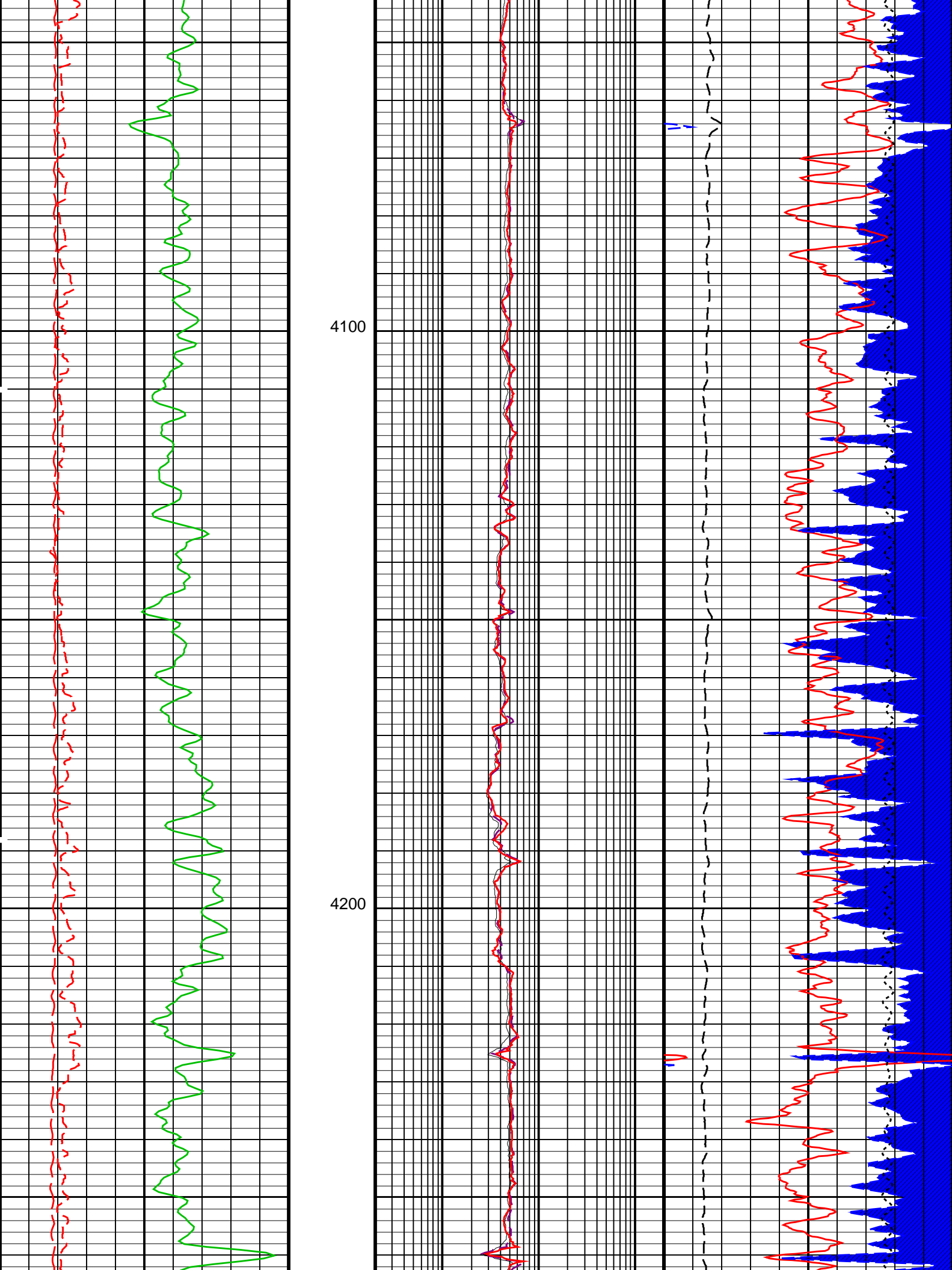


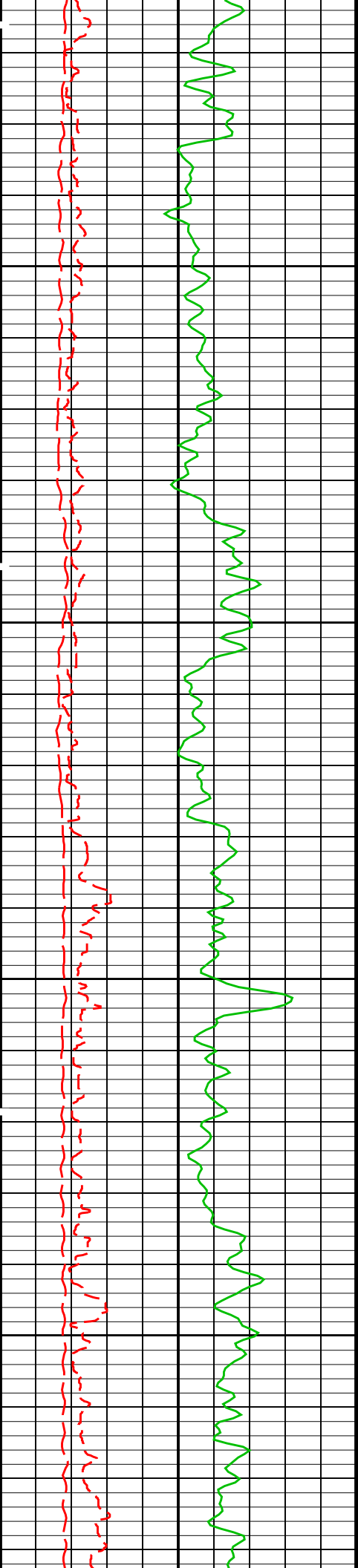


3900

4000

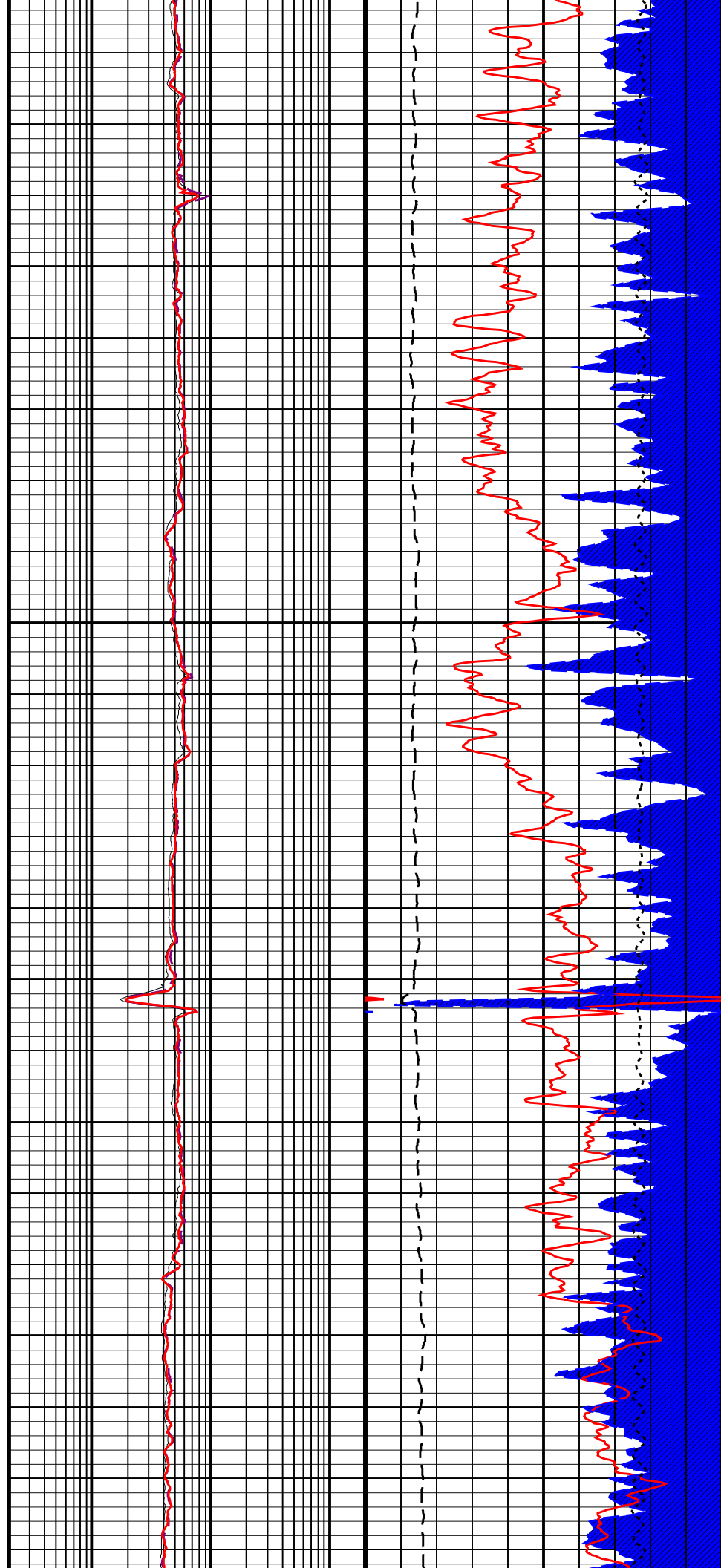


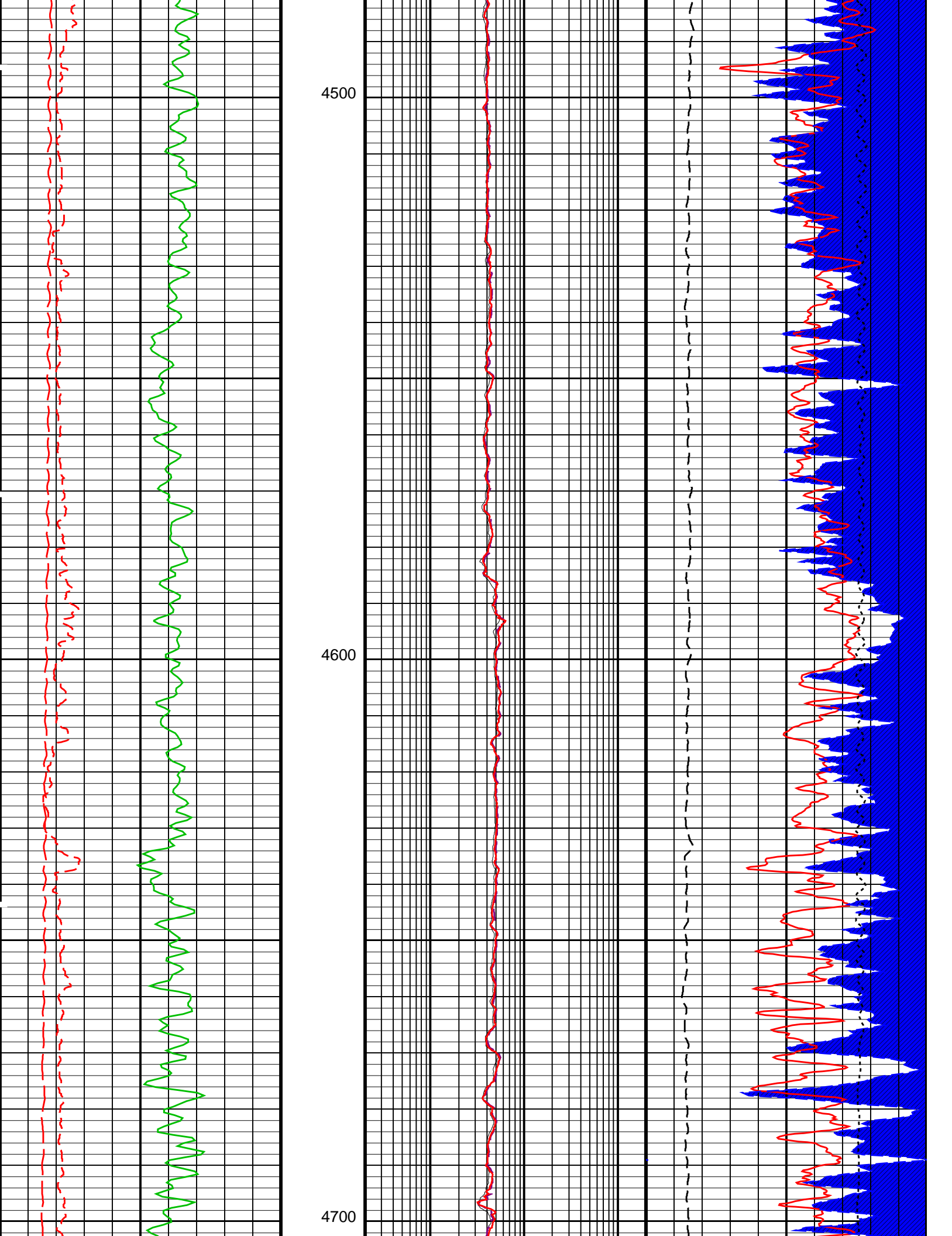


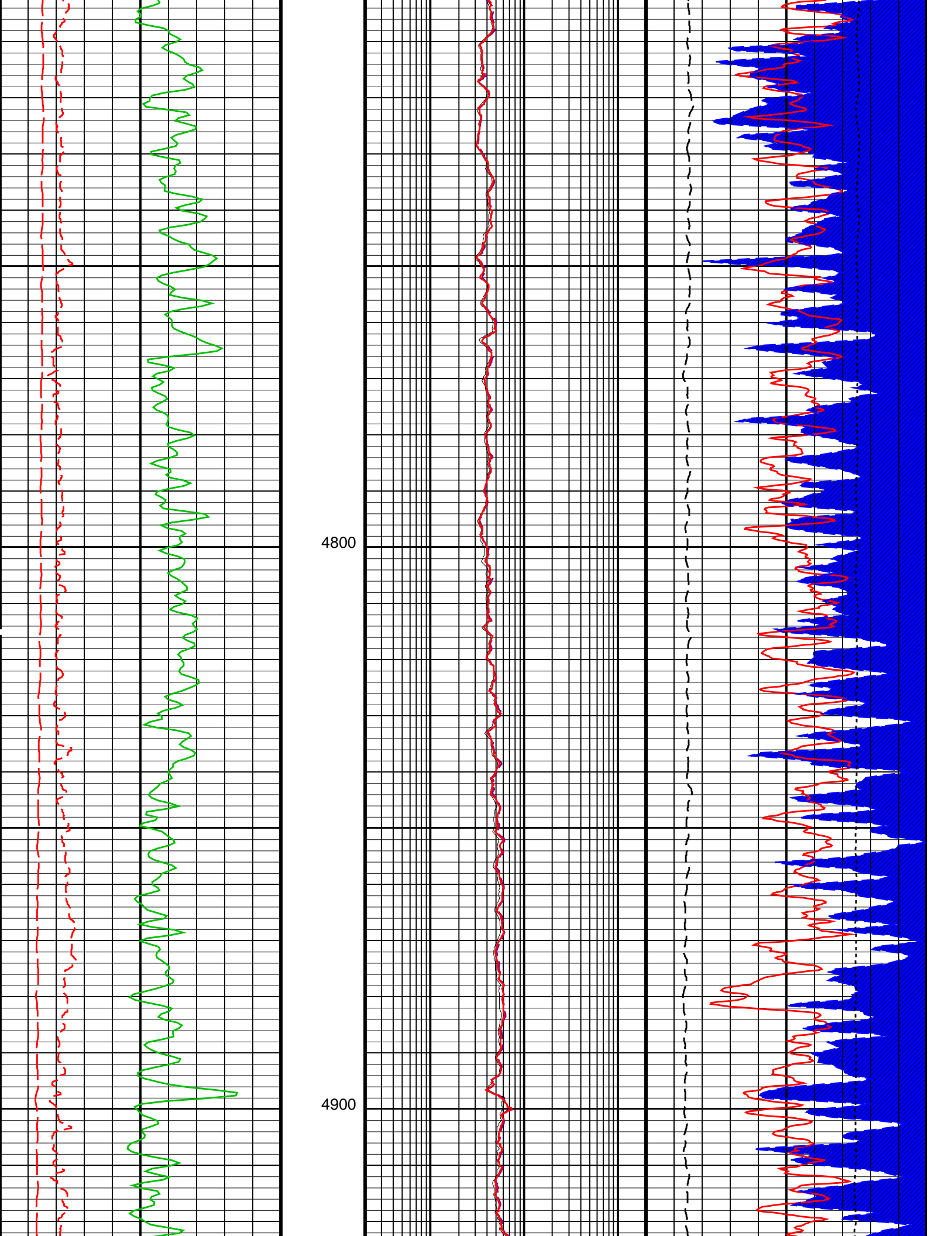


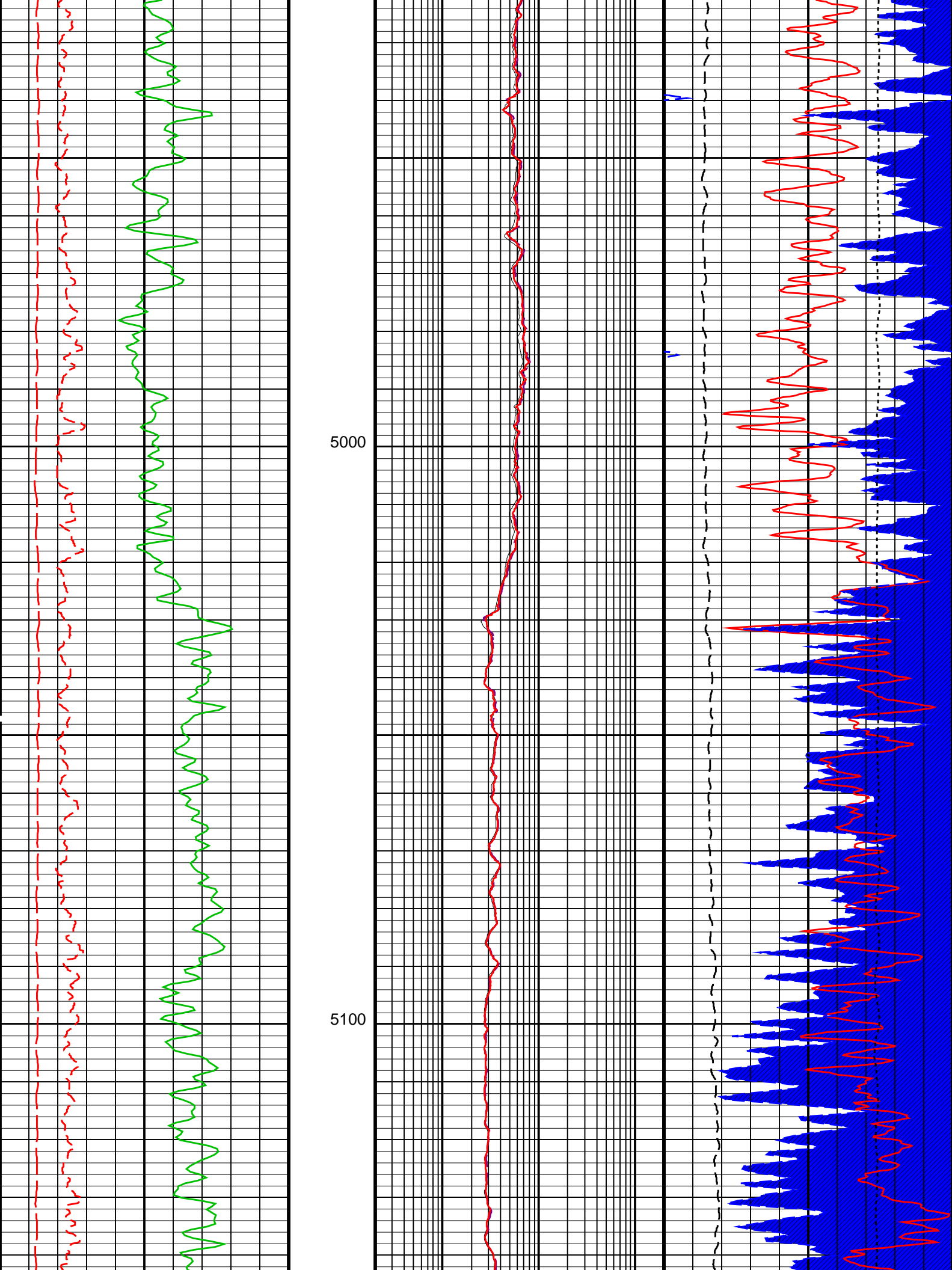
4300

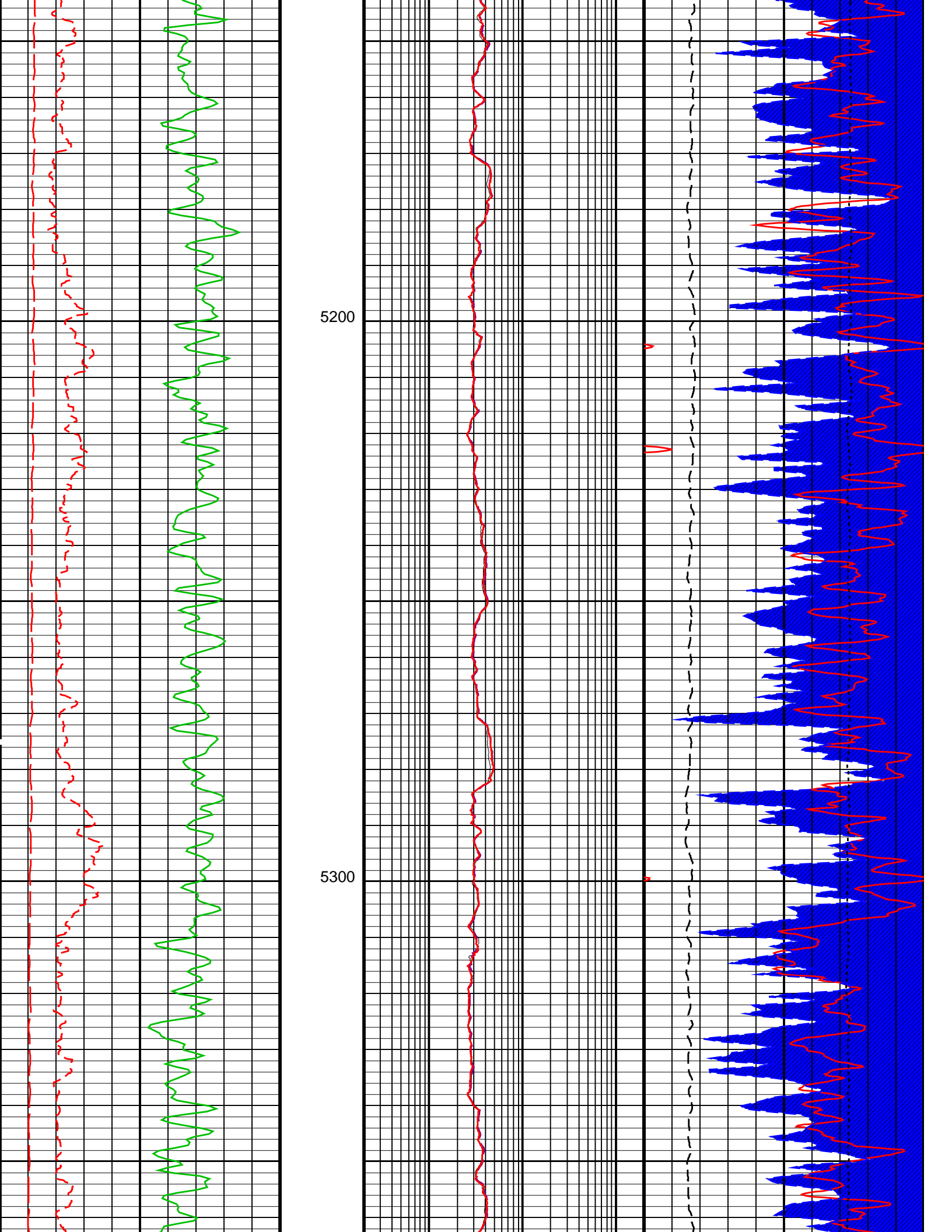
4400

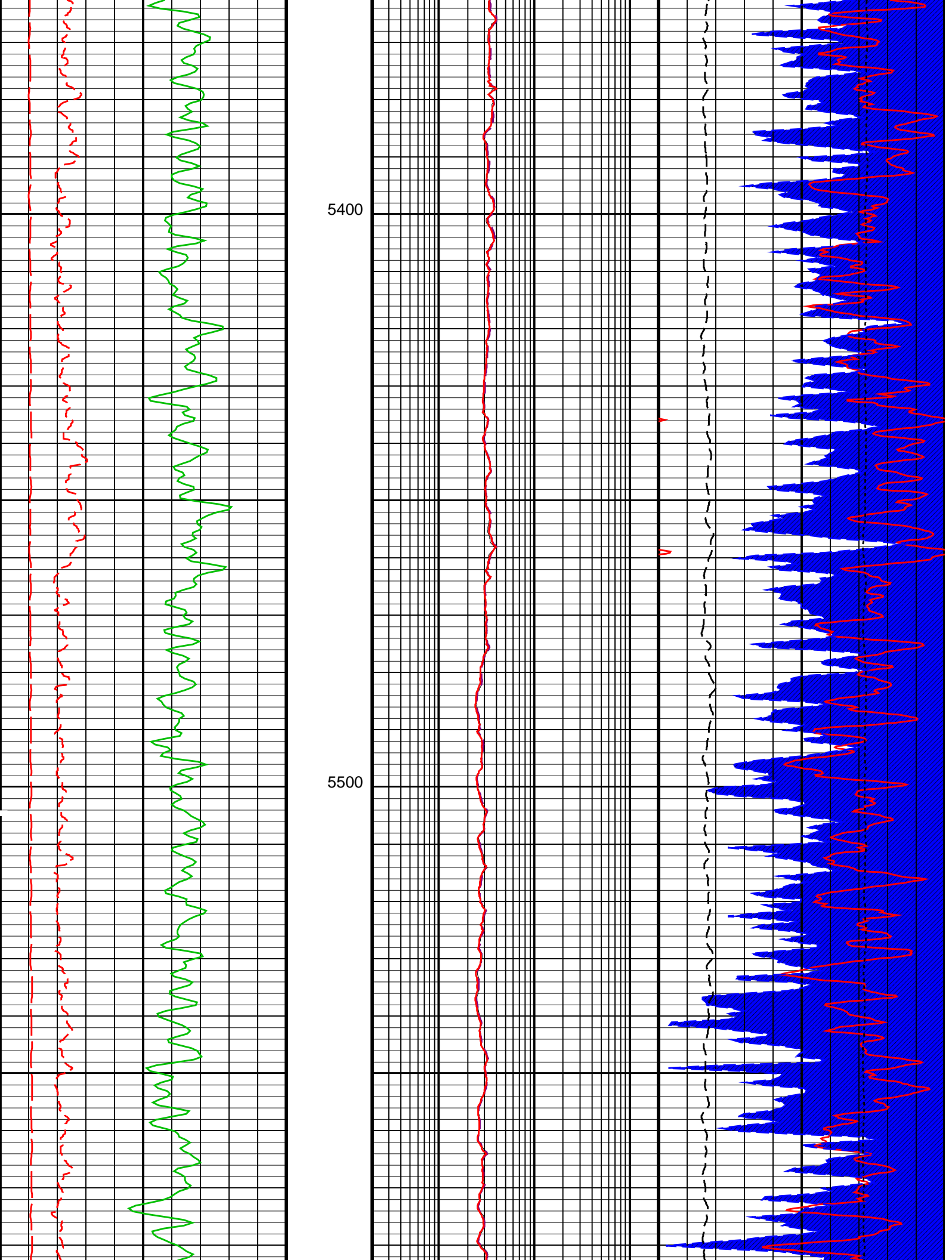


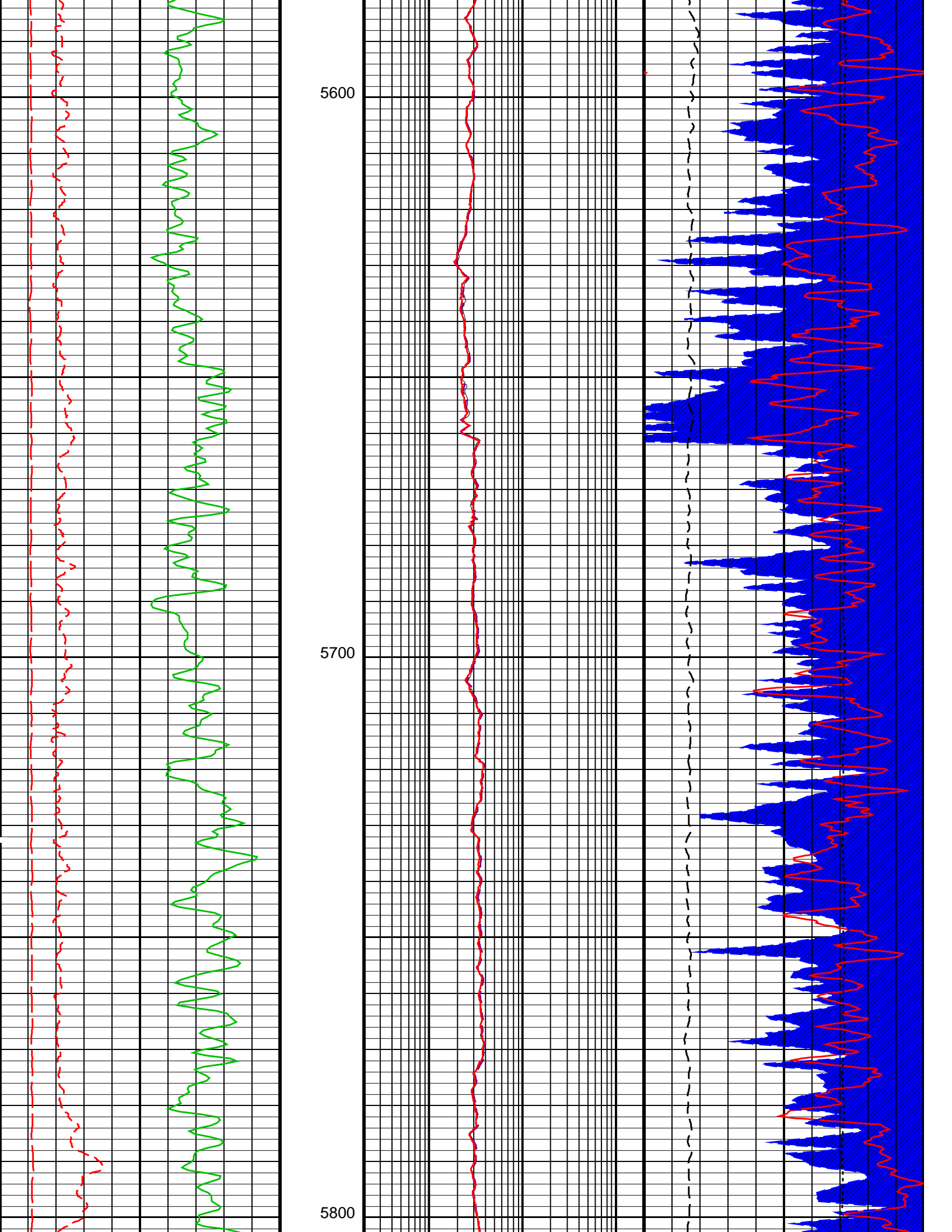


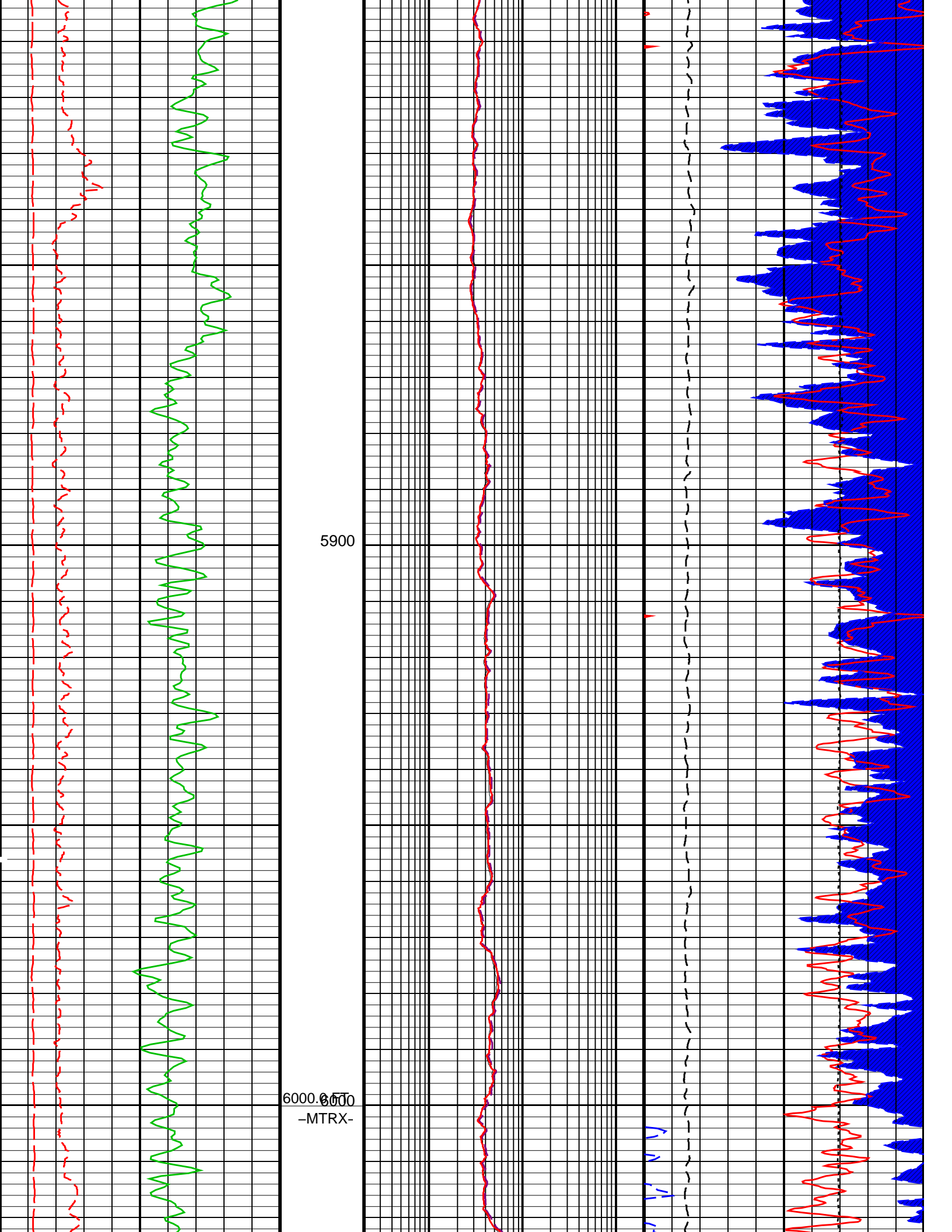


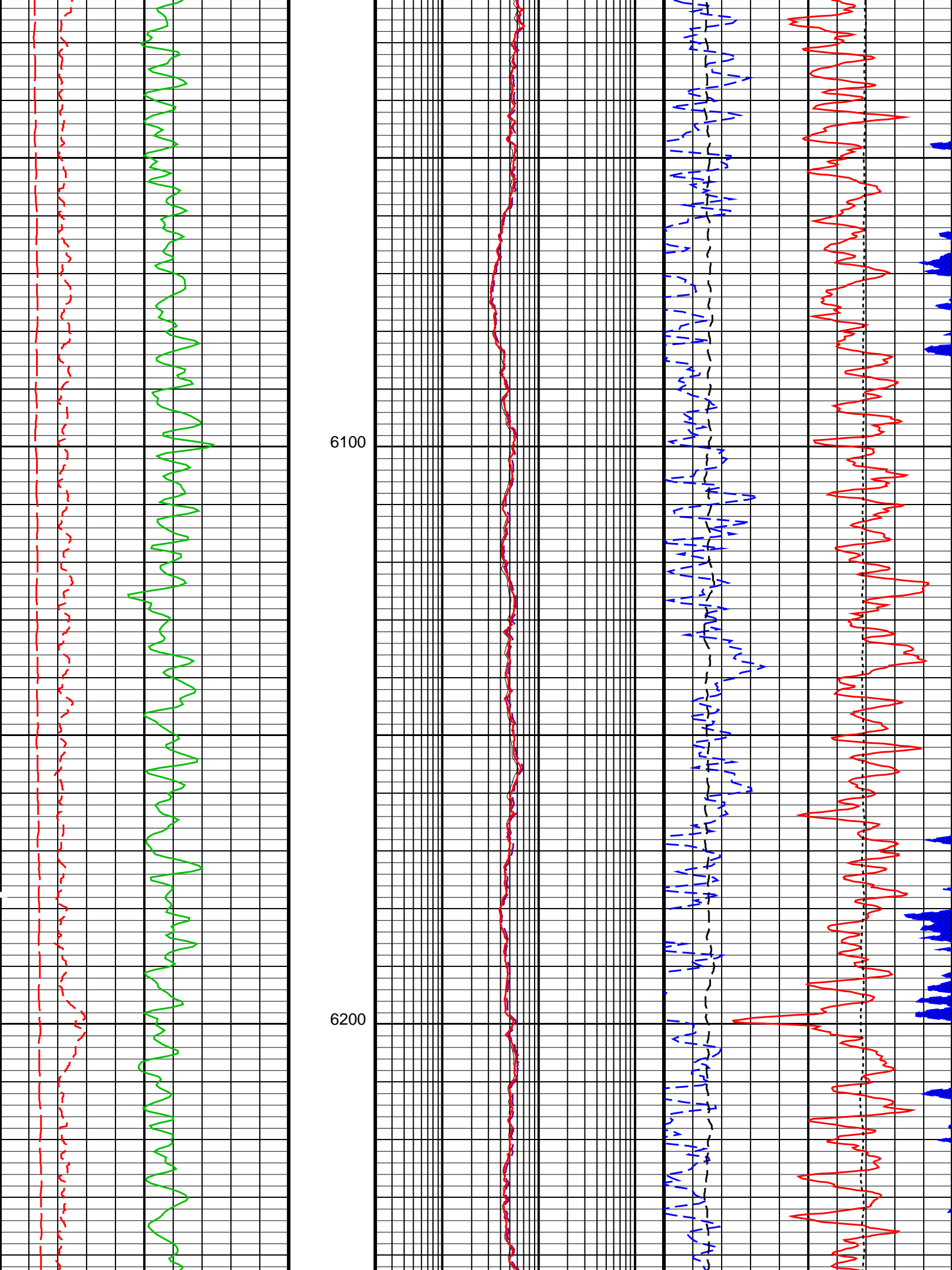


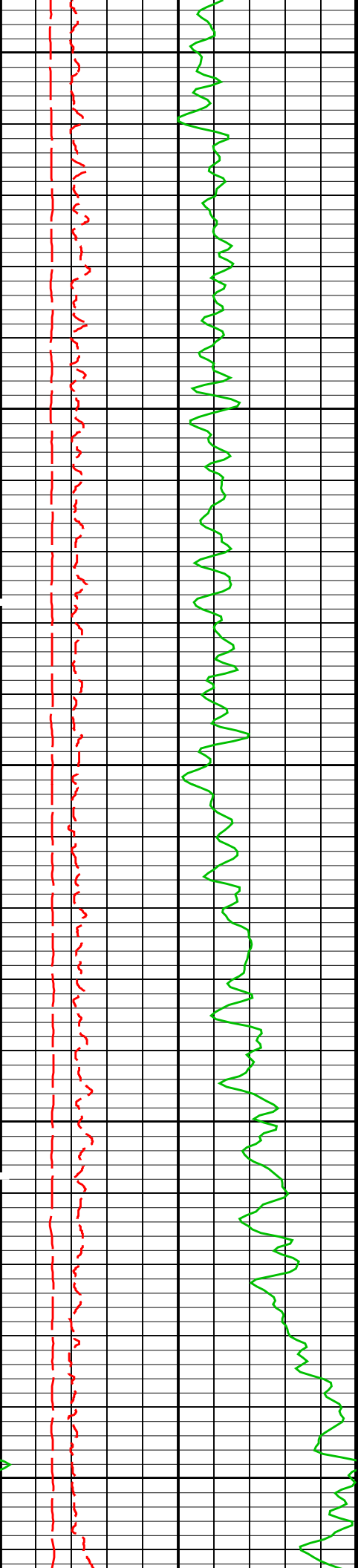






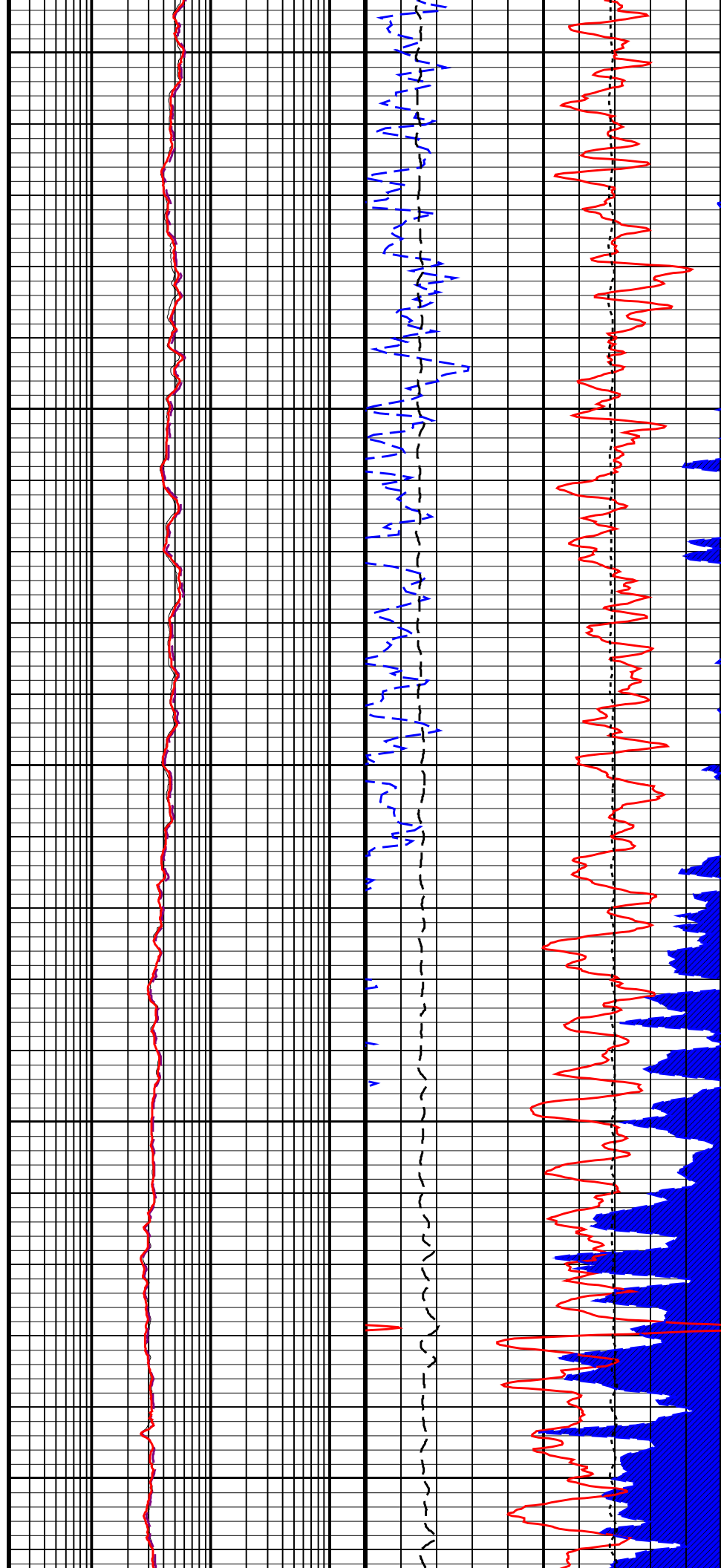


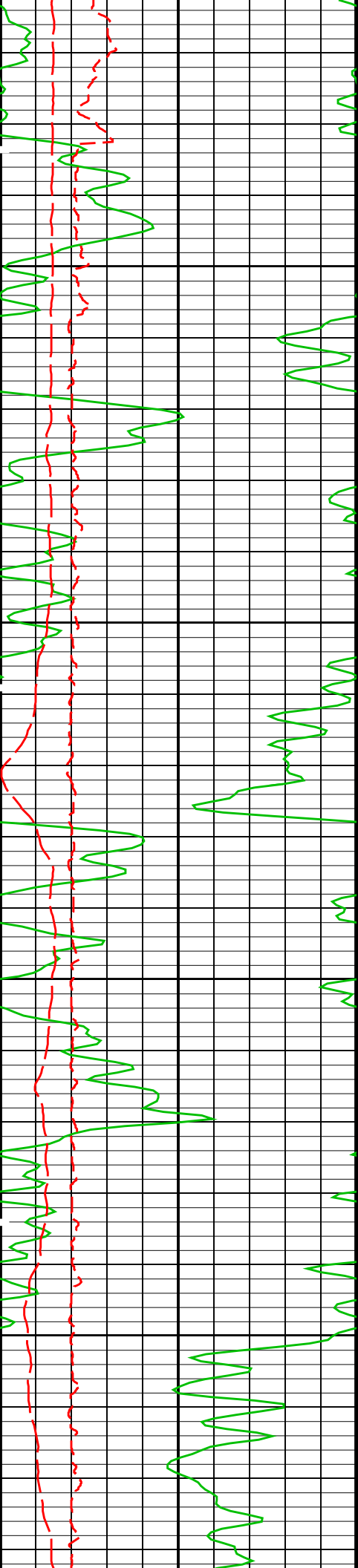




6300

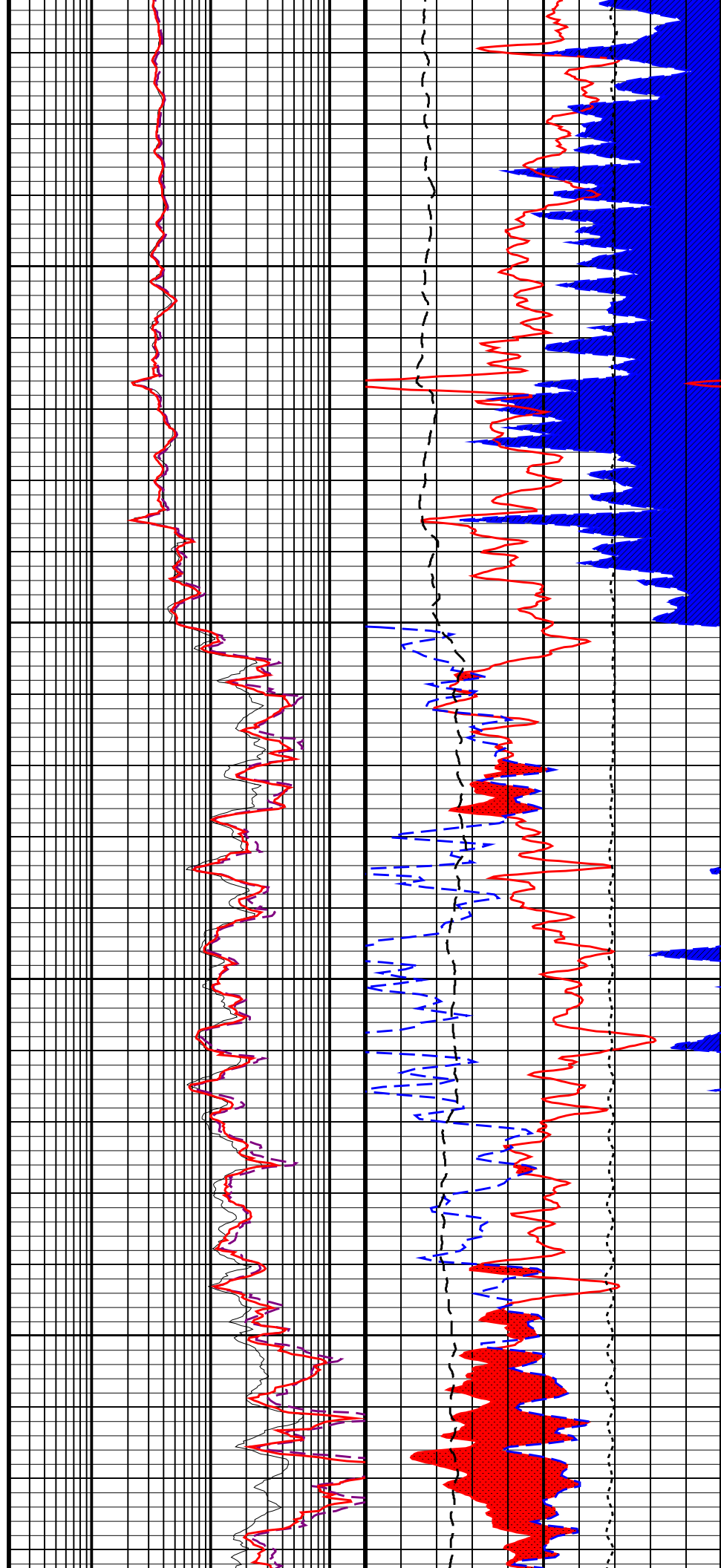
6400

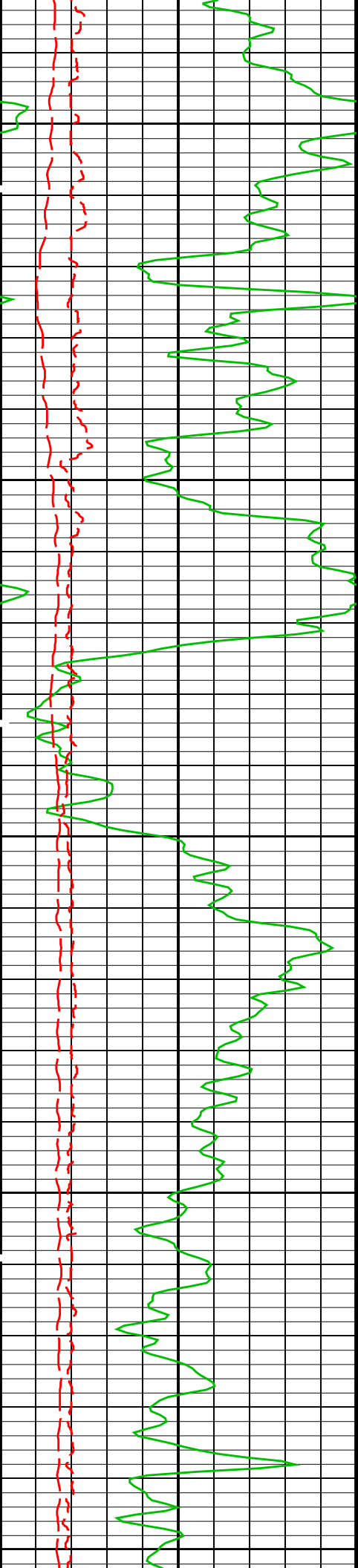




6500

6600

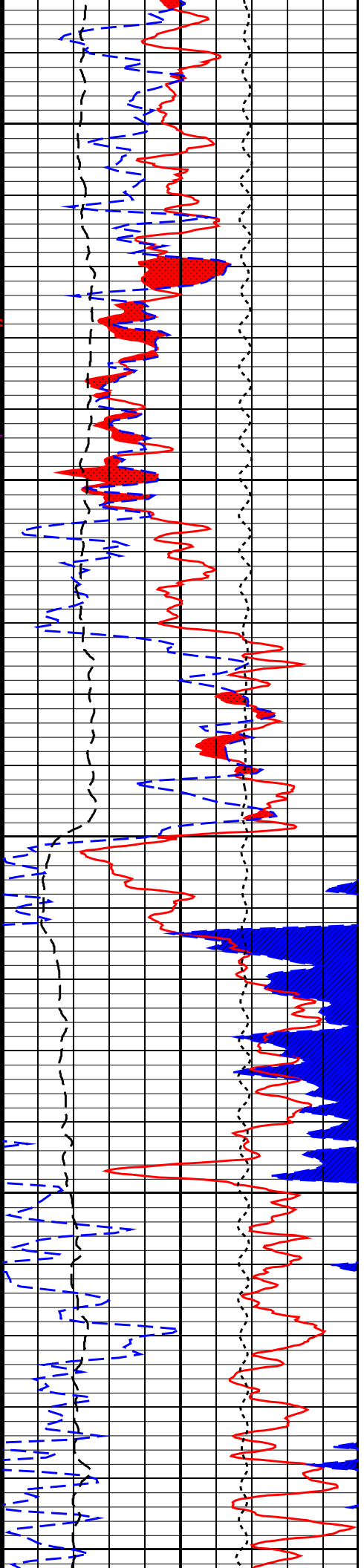
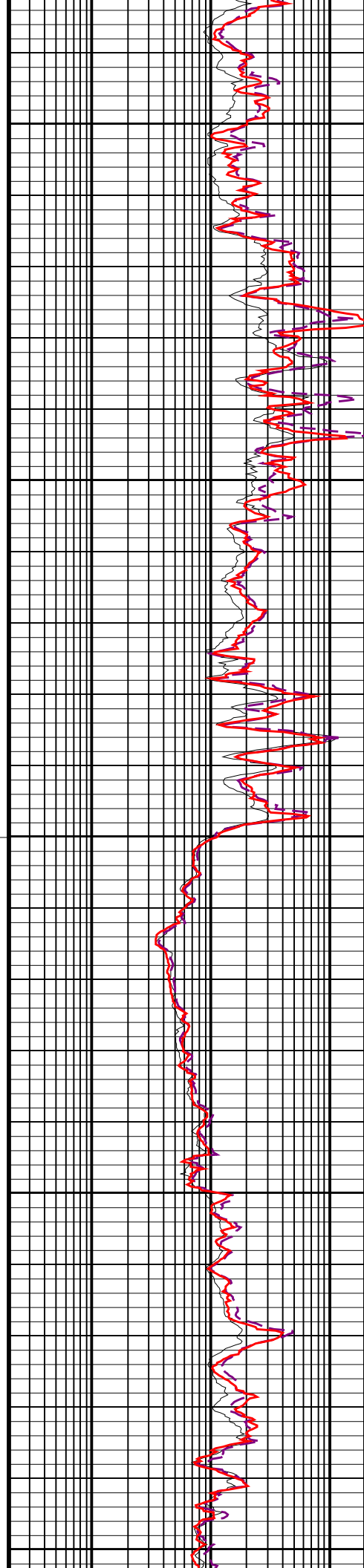


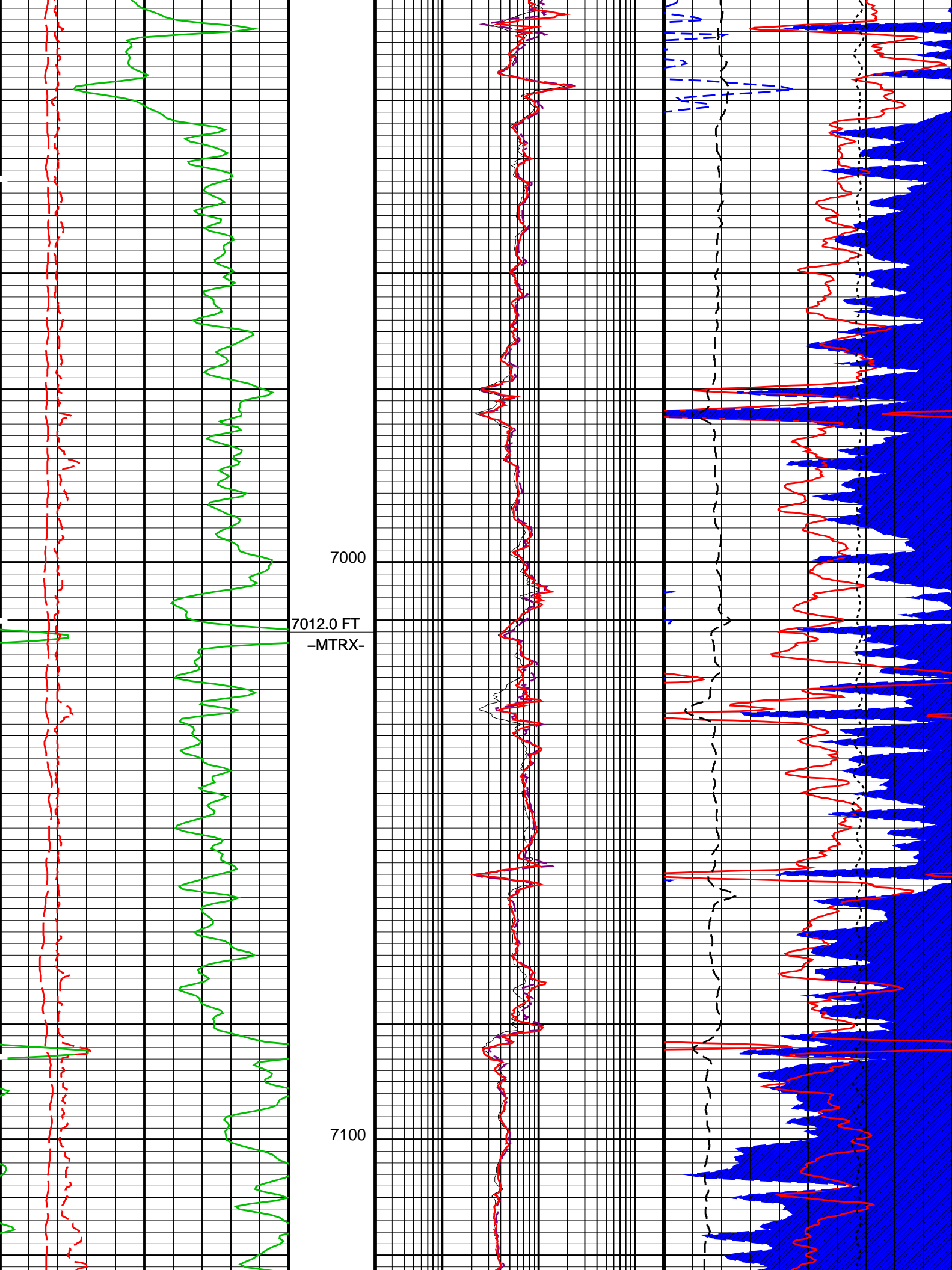


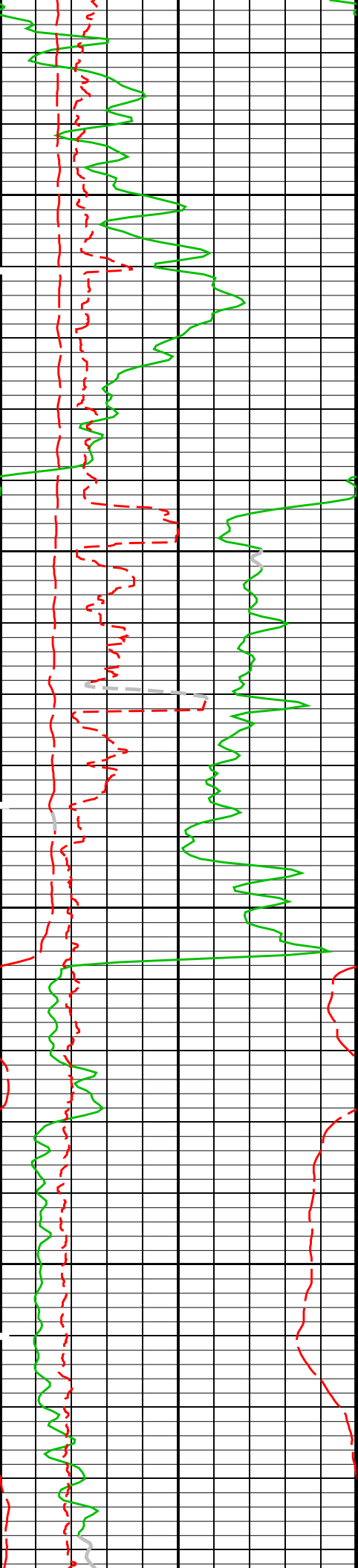
6700

6800.0850
-MTRX-

6900

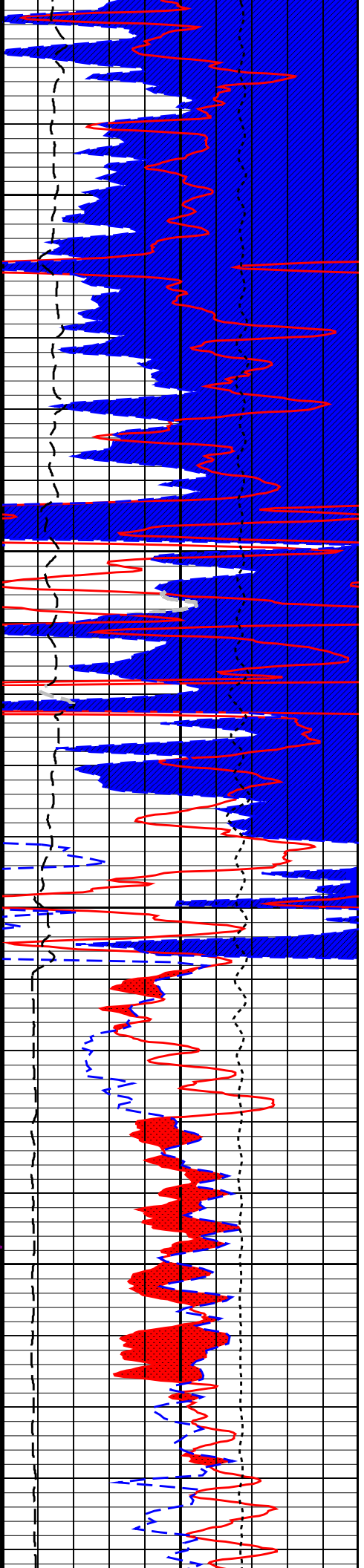
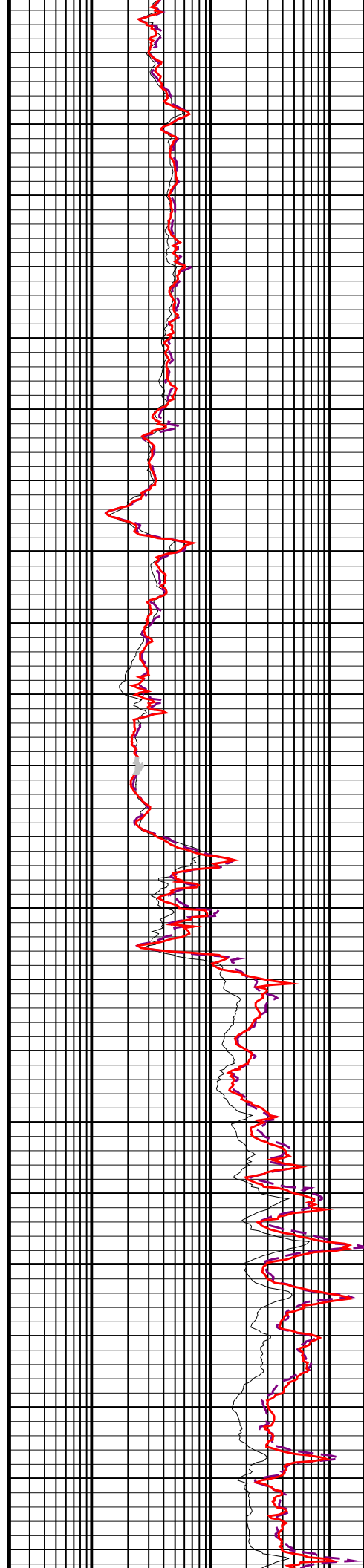


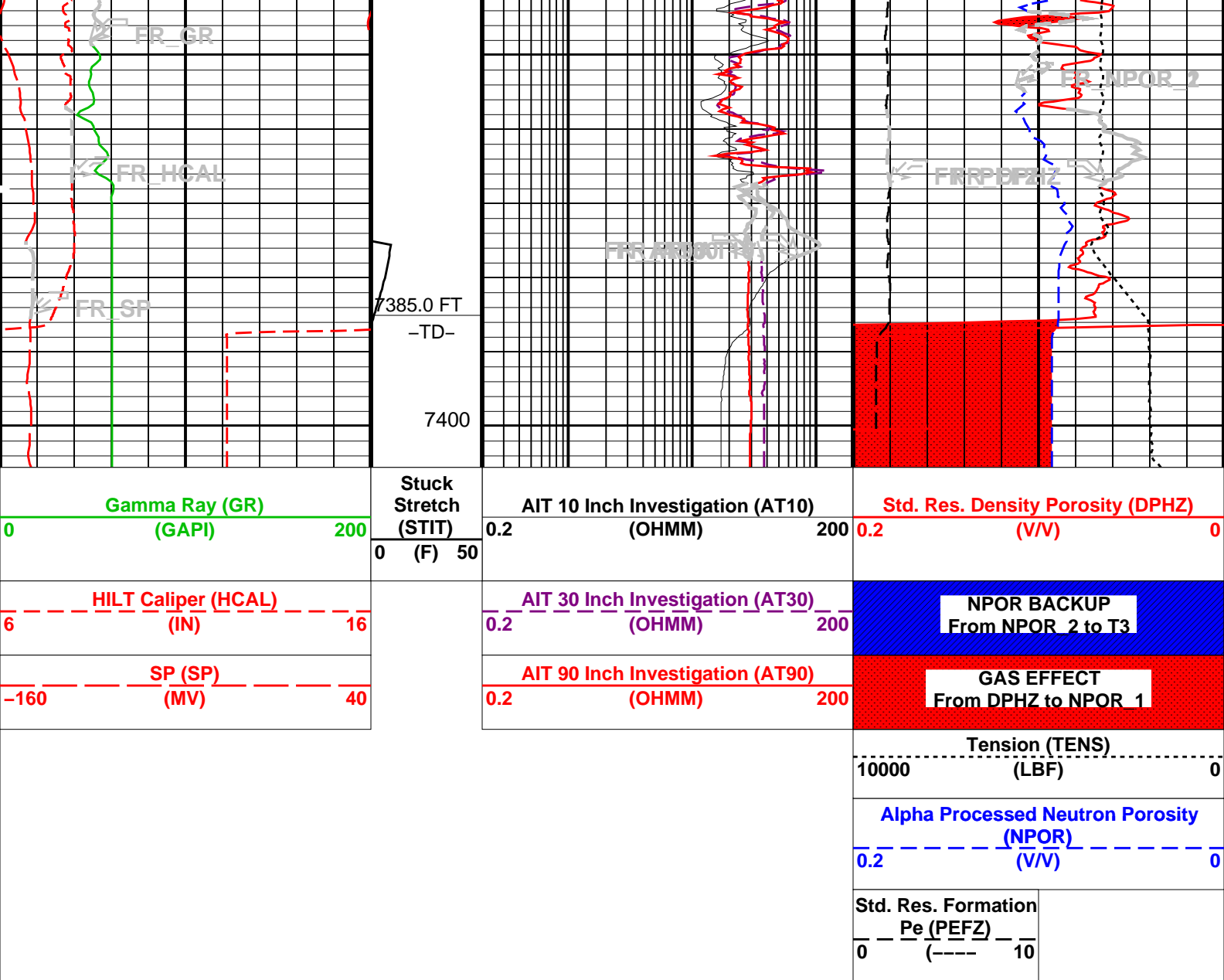




7200

7300





PIP SUMMARY

Time Mark Every 60 S

Parameters

DLIS Name	Description	Value	
AIT-M: Array Induction Tool - M			
ABHM	Array Induction Borehole Correction Mode	2_ComputeStandoff	
ABHV	Array Induction Borehole Correction Code Version Number	900	
ABLM	Array Induction Basic Logs Mode	6_One_Two_and_Four	
ABLV	Array Induction Basic Logs Code Version Number	223	
ACDE	Array Induction Casing Detection Enable	Yes	
ACEN	Array Induction Tool Centering Flag (in Borehole)	Eccentered	
ACSED	Array Induction Casing Shoe Estimated Depth	-50000	FT
AETP	Array Induction Enable Sonde Error Temp&Pres Corr	Yes	
AFRSV	Array Induction Response Set Version for Four ft Resolution	41.70.24.20	
AIGS	Array Induction Select Akima Interpolation Gating	On	
AMRF	Array Induction Mud Resistivity Factor	1	
AORSV	Array Induction Response Set Version for One ft Resolution	41.70.24.20	
ARFV	Array Induction Radial Profiling Code Version Number	701	
ARPV	Array Induction Radial Parametrization Code Version Number	232	
ASTA	Array Induction Tool Standoff	0.25	IN
ATRSV	Array Induction Response Set Version for Two ft Resolution	41.70.24.20	
ATSE	Array Induction Temperature Selection(Sonde Error Correction)	Internal	
AULV	Array Induction User Level Control	Normal	
AZRSV	Array Induction Response Set Version for Z Resolution	00.10.25.00	
BHS	Borehole Status	OPEN	
BHT	Bottom Hole Temperature (used in calculations)	191	DEGF
FEXP	Form Factor Exponent	2	
FNUM	Form Factor Numerator	1	
GCSE	Generalized Caliper Selection	HCAL	

GDEV	Average Angular Deviation of Borehole from Normal	0	DEG
GGRD	Geothermal Gradient	0.01	DF/F
GRSE	Generalized Mud Resistivity Selection	AITM_RESIST	
GTSE	Generalized Temperature Selection	HSTS_HTEM	
MATR	Rock Matrix for Neutron Porosity Corrections	SANDSTONE	
SHT	Surface Hole Temperature	68	DEGF
SPNV	SP Next Value	0	MV
HILTB-FTB: High resolution Integrated Logging Tool-DTS			
BHFL	Borehole Fluid Type	WATER	
BHFL_TLD	HILT Nuclear Mud Base	WATER	
BHS	Borehole Status	OPEN	
BHT	Bottom Hole Temperature (used in calculations)	191	DEGF
BSCO	Borehole Salinity Correction Option	NO	
CCCO	Casing & Cement Thickness Correction Option	NO	
DHC	Density Hole Correction	BS	
FD	Fluid Density	1	G/C3
FEXP	Form Factor Exponent	2	
FNUM	Form Factor Numerator	1	
FSAL	Formation Salinity	-50000	PPM
FSCO	Formation Salinity Correction Option	NO	
GCLF	Germany Coal-like Formation Option	NO	
GCSE	Generalized Caliper Selection	HCAL	
GDEV	Average Angular Deviation of Borehole from Normal	0	DEG
GGRD	Geothermal Gradient	0.01	DF/F
GRSE	Generalized Mud Resistivity Selection	AITM_RESIST	
GTSE	Generalized Temperature Selection	HSTS_HTEM	
HSCO	Hole Size Correction Option	YES	
MATR	Rock Matrix for Neutron Porosity Corrections	SANDSTONE	
MCCO	Mud Cake Correction Option	NO	
MCOR	Mud Correction	NATU	
MDEN	Matrix Density	2.65	G/C3
MWCO	Mud Weight Correction Option	NO	
NAAC	HRDD APS Activation Correction	OFF	
NMT	HILT Nuclear Mud Type	NOBARITE	
NPRM	HRDD Processing Mode	StdRes	
NSAR	HRDD Depth Sampling Rate	1	IN
PTCO	Pressure/Temperature Correction Option	NO	
SDAT	Standoff Data Source	SOCN	
SHT	Surface Hole Temperature	68	DEGF
SOCN	Standoff Distance	0.125	IN
SOCO	Standoff Correction Option	YES	
HOLEV: Integrated Hole/Cement Volume			
BHS	Borehole Status	OPEN	
BHT	Bottom Hole Temperature (used in calculations)	191	DEGF
GCSE	Generalized Caliper Selection	HCAL	
GDEV	Average Angular Deviation of Borehole from Normal	0	DEG
GGRD	Geothermal Gradient	0.01	DF/F
GRSE	Generalized Mud Resistivity Selection	AITM_RESIST	
GTSE	Generalized Temperature Selection	HSTS_HTEM	
MATR	Rock Matrix for Neutron Porosity Corrections	SANDSTONE	
SHT	Surface Hole Temperature	68	DEGF
STI: Stuck Tool Indicator			
LBFR	Trigger for MAXIS First Reading Label	TDL	
STKT	STI Stuck Threshold	2.5	FT
TDD	Total Depth - Driller	7405.00	FT
TDL	Total Depth - Logger	7385.00	FT
System and Miscellaneous			
BS	Bit Size	7.875	IN
BSAL	Borehole Salinity	-50000.00	PPM
CSIZ	Current Casing Size	8.625	IN
CWEI	Casing Weight	24.00	LB/F
DFD	Drilling Fluid Density	8.20	LB/G
DORL	Depth Offset for Repeat Analysis	0.0	FT
FLEV	Fluid Level	-50000.00	FT
MST	Mud Sample Temperature	86.09	DEGF
RMFS	Resistivity of Mud Filtrate Sample	0.8752	OHMM
TD	Total Depth	7385	FT

Format: COMBO Vertical Scale: 5" per 100' Graphics File Created: 07-Apr-2010 17:12

OP System Version: 17C0-154

AIT-M	17C0-154	HILTB-FTB	17C0-154
DTC-H	17C0-154		

Output DLIS Files

DEFAULT	AIT_TLD_MCFL_CNL_009LUP	FN:8	PRODUCER	07-Apr-2010 17:12
---------	-------------------------	------	----------	-------------------

Company: **Kerr McGee Oil and Gas Onshore, LP**

Schlumberger

Well: **KCB 17-14**
Field: **Wattenberg**
County: **Weld**
State: **Colorado**

Platform Express
Triple Combo