

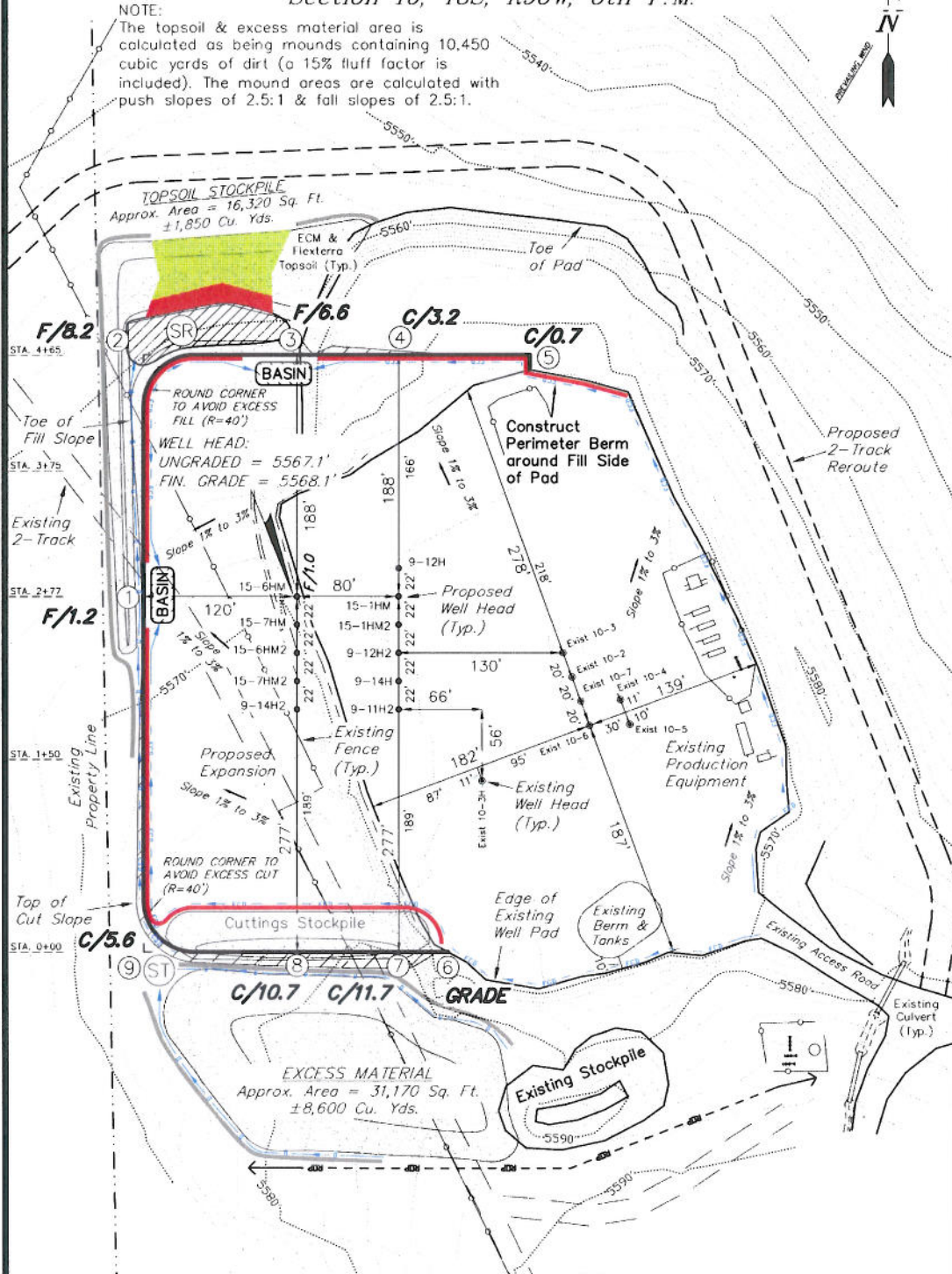
# ENCANA OIL & GAS (USA) INC

## CONSTRUCTION LAYOUT DRAWING CUT SHEET

### WELL PAD (C100U) EXPANSION Section 10, T8S, R96W, 6th P.M.

#### NOTE:

The topsoil & excess material area is calculated as being mounds containing 10,450 cubic yards of dirt (a 15% fluff factor is included). The mound areas are calculated with push slopes of 2.5:1 & fill slopes of 2.5:1.



#### NOTES:

- (1) Slope Track and/or Terrace All Slopes and Piles
- (2) Erosion Control & Seed Topsoil Stockpile
- (3) Erosion Control & Seed Outside Slopes of Stockpiles
- (4) Slope away from Substructure Areas 1% to 3% to Flow Control Ditch on Entire Pad
- (5) When Possible the Cut and Fill Slopes Directly Behind the Proposed Production Equipment Should be Reclaimed with 3:1 Slopes and Topsoil Spread During Pad Construction.
- (6) BMP Selection and Position may Change Depending on Actual Conditions Encountered During the Construction Process.
- (7) All CMP's Shall have Inlet and Outlet Protection.
- (8) All BMP's to be constructed to Encana Oil & Gas (USA) Inc. BMP Manual's Specifications

#### LEGEND:

- PARI = PAD/ACCESS ROAD INTERFACE
- SR = SEDIMENT RESERVOIR
- ST = SEDIMENT TRAP
- R.O.P. = RUN-ON PROTECTION
- PC = PERIMETER CONTROL (WATTLES)
- CDM = CHECK DAM
- FCD = FLOW CONTROL DITCH
- ECB = EROSION CONTROL BLANKET
- D = FILL DIVERSION TO SEDIMENT TRAP
- CSD = CUT SLOPE DIVERSION (BERM TOE OF CUT SLOPE)
- VGB = VEGETATION BUFFER (UNDISTURBED LAND INSIDE PC)
- SEED, ECB & FLEX
- LEVEL SPREADER

SURVEYED BY: C.D.S. DATE SURVEYED: 03-30-10  
DRAWN BY: R.V.C. DATE DRAWN: 07-27-10  
SCALE: 1" = 100' REVISED: F.T.M. 09-01-10

**Tri State**  
Land Surveying, Inc.  
180 NORTH VERNAL AVE. VERNAL, UTAH 84078  
(435) 761-2501

SHEET  
4  
OF 11

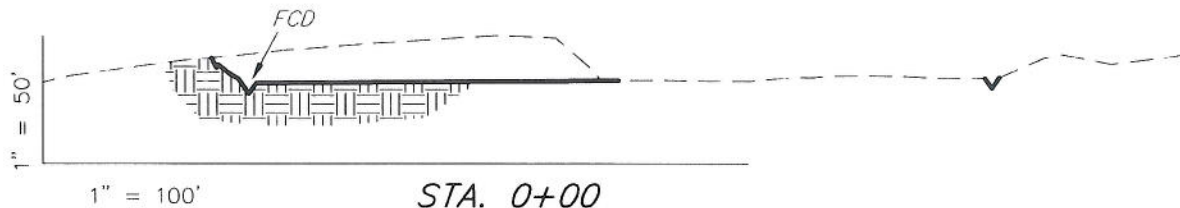
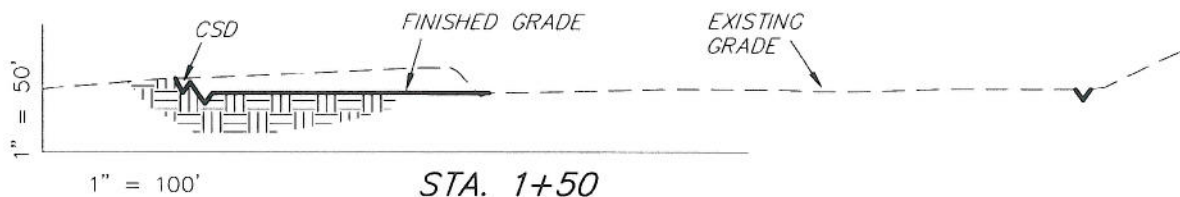
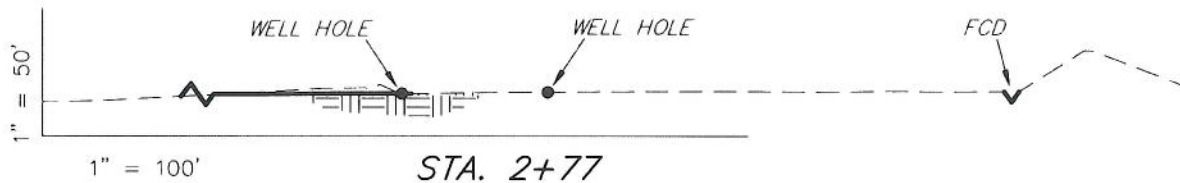
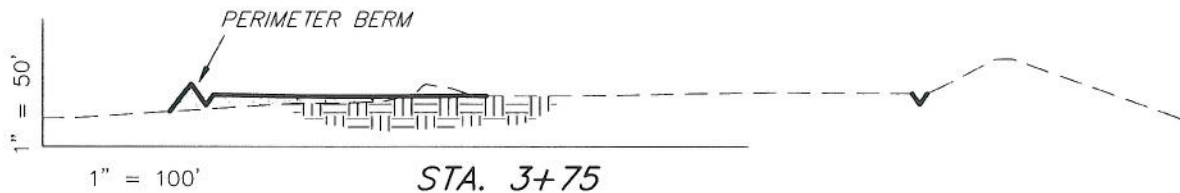
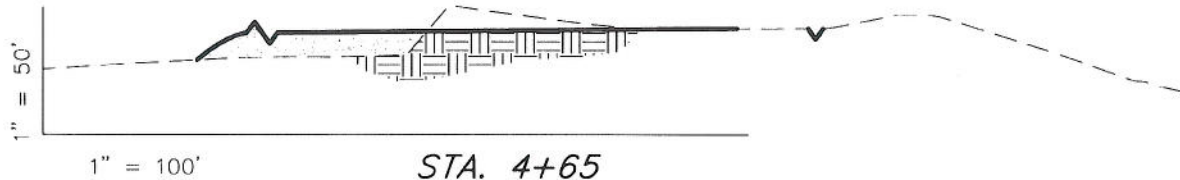
# ENCANA OIL & GAS (USA) INC

## CONSTRUCTION LAYOUT DRAWING

### CROSS SECTIONS

#### WELL PAD (C100U) EXPANSION

Section 10, T8S, R96W, 6th P.M.



NOTE:  
UNLESS OTHERWISE NOTED  
CUT SLOPES ARE AT 1:1  
FILL SLOPES ARE AT 1.5:1

#### ESTIMATED EARTHWORK QUANTITIES (No Shrink or swell adjustments have been used) (Expressed in Cubic Yards)

ITEM	CUT	FILL	EXCESS	6" TOPSOIL
PAD	10,010	2,530	7,480	Topsoil is not included in Pad Cut
TOTALS	10,010	2,530	7,480	1,610

SURVEYED BY: C.D.S. DATE SURVEYED: 03-30-10  
DRAWN BY: R.V.C. DATE DRAWN: 07-27-10  
SCALE: 1" = 100' REVISED: F.T.M. 09-01-10

**Tri State** (435) 781-2501  
Land Surveying, Inc.  
180 NORTH VERNAL AVE. VERNAL, UTAH 84078

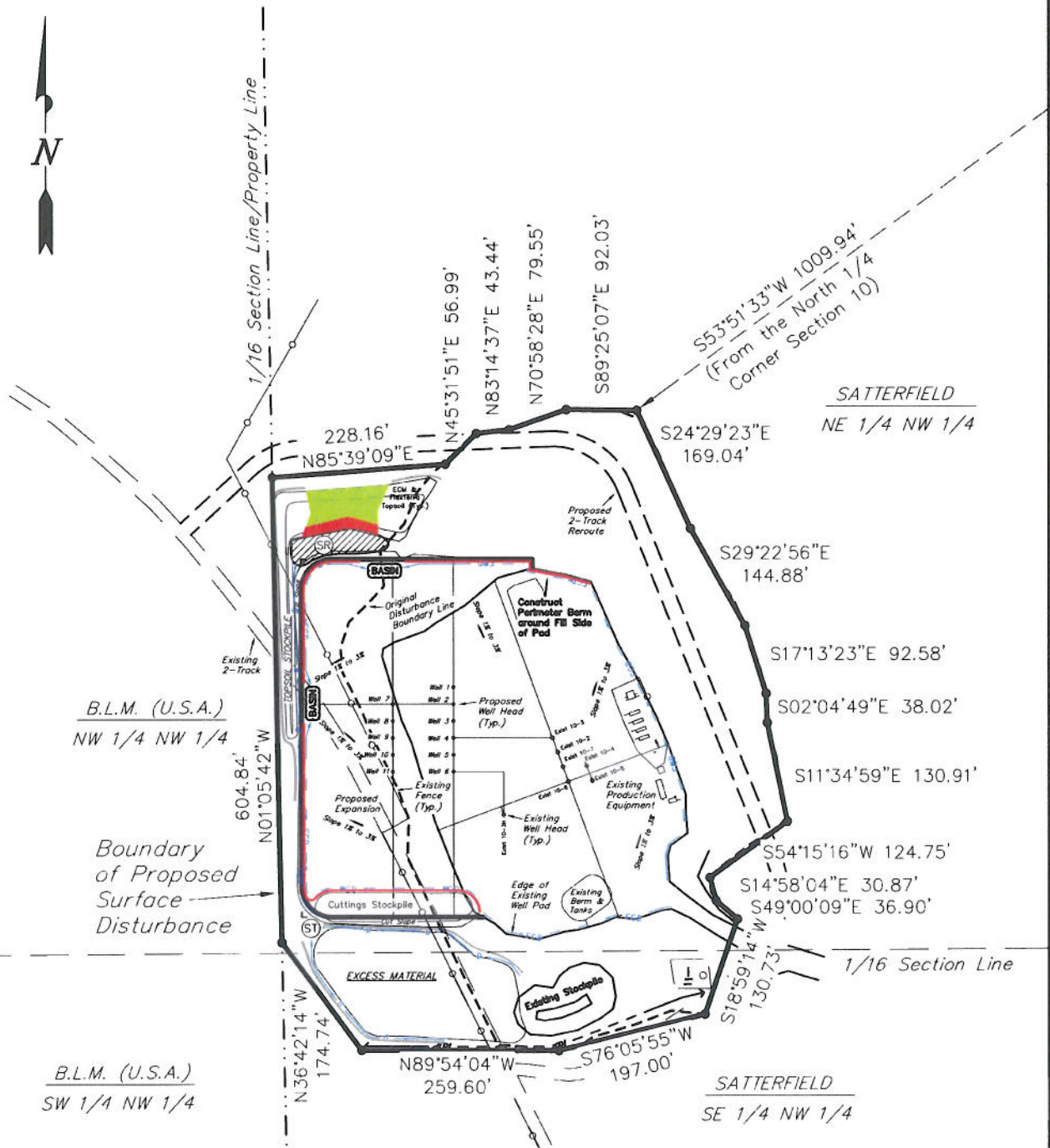
SHEET  
**5**  
OF 11



# ENCANA OIL & GAS (USA) INC

## SURFACE DISTURBANCE AREA WELL PAD (C100U) EXPANSION Section 10, T8S, R96W, 6th P.M.

Section Line



B.L.M. (U.S.A.)  
NW 1/4 NW 1/4

Boundary of Proposed Surface Disturbance

B.L.M. (U.S.A.)  
SW 1/4 NW 1/4

### BASIS OF BEARINGS NOTE:

Basis of Bearings is the West line of the NW 1/4 of Section 10 which is taken from Global Positioning Satellite observations to bear N00°44'51"E a measured distance of 2627.63'.

### Surface Disturbance Area

SURFACE OWNERSHIP	PROPOSED	EXISTING	TOTAL
Section 10, Satterfield	2.77 Acres	7.69 Acres	10.46 Acres
TOTAL PAD DISTURBANCE	2.77 Acres	7.69 Acres	10.46 Acres

SURVEYED BY: C.D.S. DATE SURVEYED: 03-30-10  
DRAWN BY: F.T.M. DATE DRAWN: 07-27-10  
SCALE: 1" = 200' REVISED: F.T.M. 09-01-10

**Tri State**  
Land Surveying, Inc.  
180 NORTH VERNAL AVE. VERNAL, UTAH 84078  
(435) 781-2501

SHEET  
8