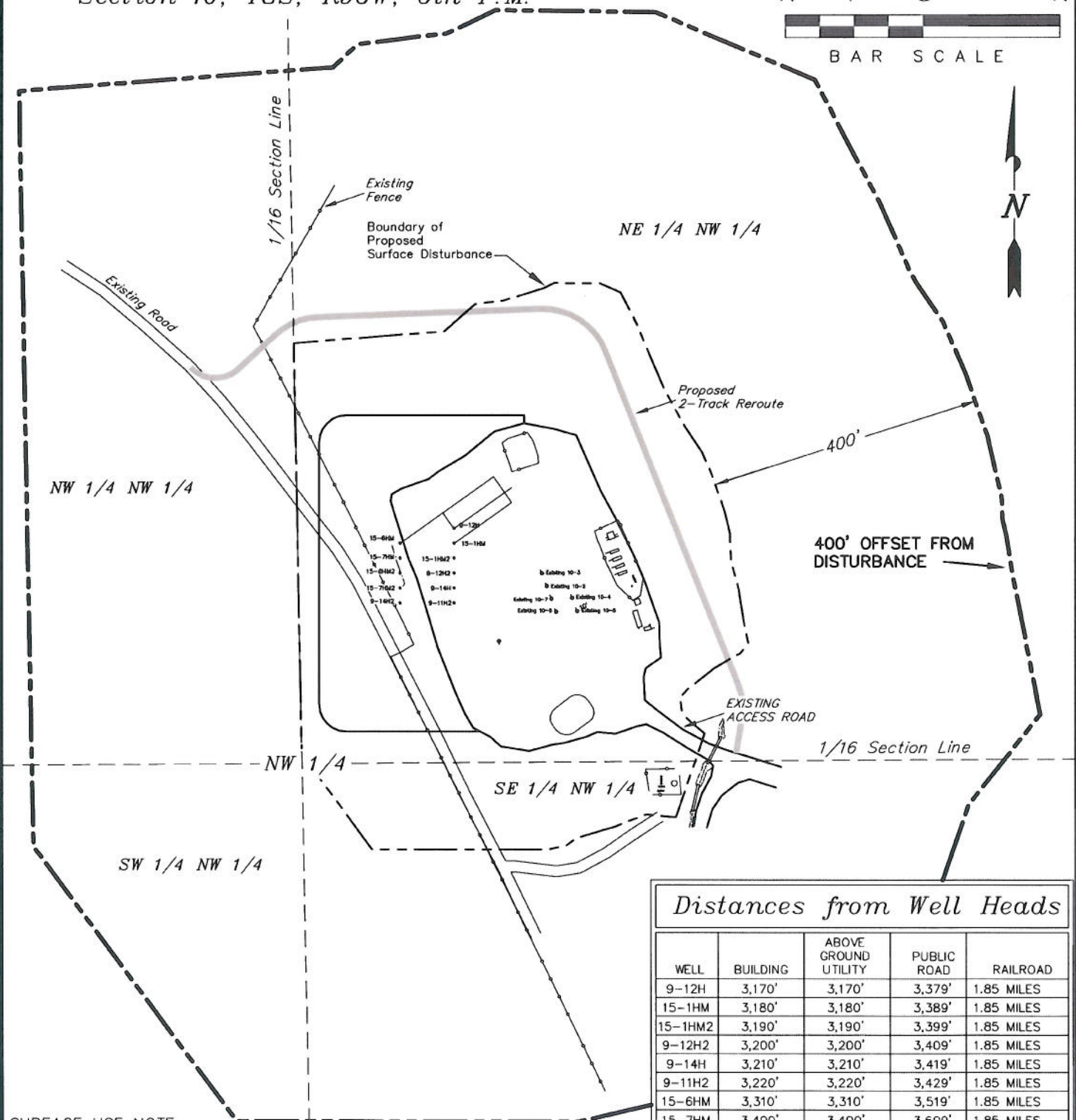
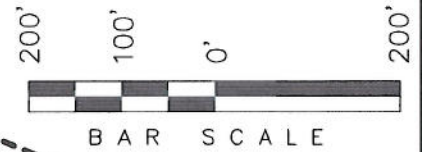


# ENCANA OIL & GAS (USA) INC

LOCATION DRAWING  
ADDENDUM TO LEGAL PLATS FOR  
WELL PAD (C100U) EXPANSION  
Section 10, T8S, R96W, 6th P.M.



Distances from Well Heads

WELL	BUILDING	ABOVE GROUND UTILITY	PUBLIC ROAD	RAILROAD
9-12H	3,170'	3,170'	3,379'	1.85 MILES
15-1HM	3,180'	3,180'	3,389'	1.85 MILES
15-1HM2	3,190'	3,190'	3,399'	1.85 MILES
9-12H2	3,200'	3,200'	3,409'	1.85 MILES
9-14H	3,210'	3,210'	3,419'	1.85 MILES
9-11H2	3,220'	3,220'	3,429'	1.85 MILES
15-6HM	3,310'	3,310'	3,519'	1.85 MILES
15-7HM	3,400'	3,400'	3,609'	1.85 MILES
15-6HM2	3,490'	3,490'	3,699'	1.85 MILES
15-7HM2	3,580'	3,580'	3,789'	1.85 MILES
9-14H2	3,670'	3,670'	3,879'	1.85 MILES

**SURFACE USE NOTE:**  
Surface use of the well site is grazing. Vegetation consists mainly of Sagebrush & Cedar Trees.

SURVEYED BY: C.D.S.    DATE SURVEYED: 03-30-10  
DRAWN BY: L.C.S.    DATE DRAWN: 08-31-10  
SCALE: 1" = 200'    REVISED:

**Tri State**  
Land Surveying, Inc.  
180 NORTH VERNAL AVE.    VERNAL, UTAH 84078  
(435) 781-2501

SHEET  
21  
OF 11