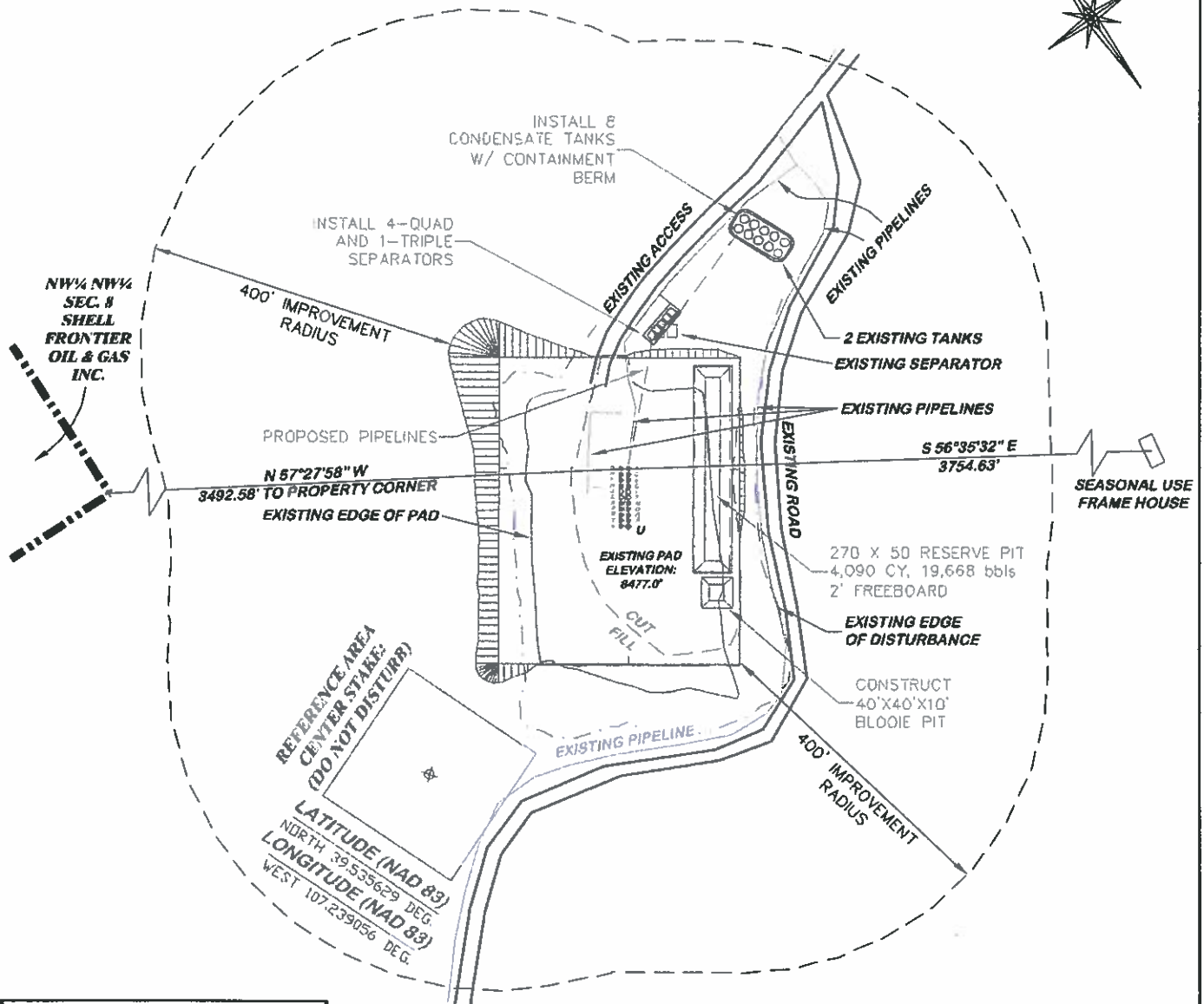
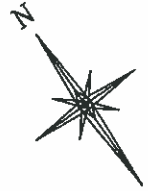


FINISHED ELEVATION: 8477.0'
PROPOSED AREA OF DISTURBANCE: 3.5± ACRES
DRAINS TO CONN CREEK



CC 608-43-31 PAD			
SLOT	WELL	SLOT	WELL
A	CC 697-09-25A	B	CC 697-09-39
C	CC 697-09-25B	D	CC 697-09-31B
E	CC 697-09-47A	F	CC 697-09-31A
G	CC 697-09-47B	H	CC 697-09-23B
I	OPEN	J	OPEN
K	OPEN	L	OPEN
M	CC 697-09-27A	N	CC 697-09-20
O	CC 697-09-27B	P	CC 697-09-21
Q	CC 697-09-45	R	CC 697-09-29A
S	CC 697-09-45B	T	CC 697-09-29B
U	CC 697-09-31C(EXTENDING)	V	CC 697-09-29C

**BEFORE DIGGING
 CALL FOR
 UTILITY LINE LOCATION**

CC 608-43-31 PAD



RIFFIN & ASSOCIATES, INC.
 1414 ELK ST., ROCK SPRINGS, WY 82901

DRAWN: 7/8/10 - DEH

SCALE: 1" = 200'

REVISED: N/A

DRG JOB No. 11695

EXHIBIT 2D

LOCATION DRAWING

OXY USA WTP LP
CASCADE CREEK 697-08-20, 21, 23B, 29A, 29B, 29C, 31A, 31B, 37A, 37B, 39, 45, 46B, 47A, 47B, 697-09-25A, 25B, NESE, SECTION 8, T. 6 S., R. 97 W., 6th P.M., GARFIELD COUNTY, COLORADO