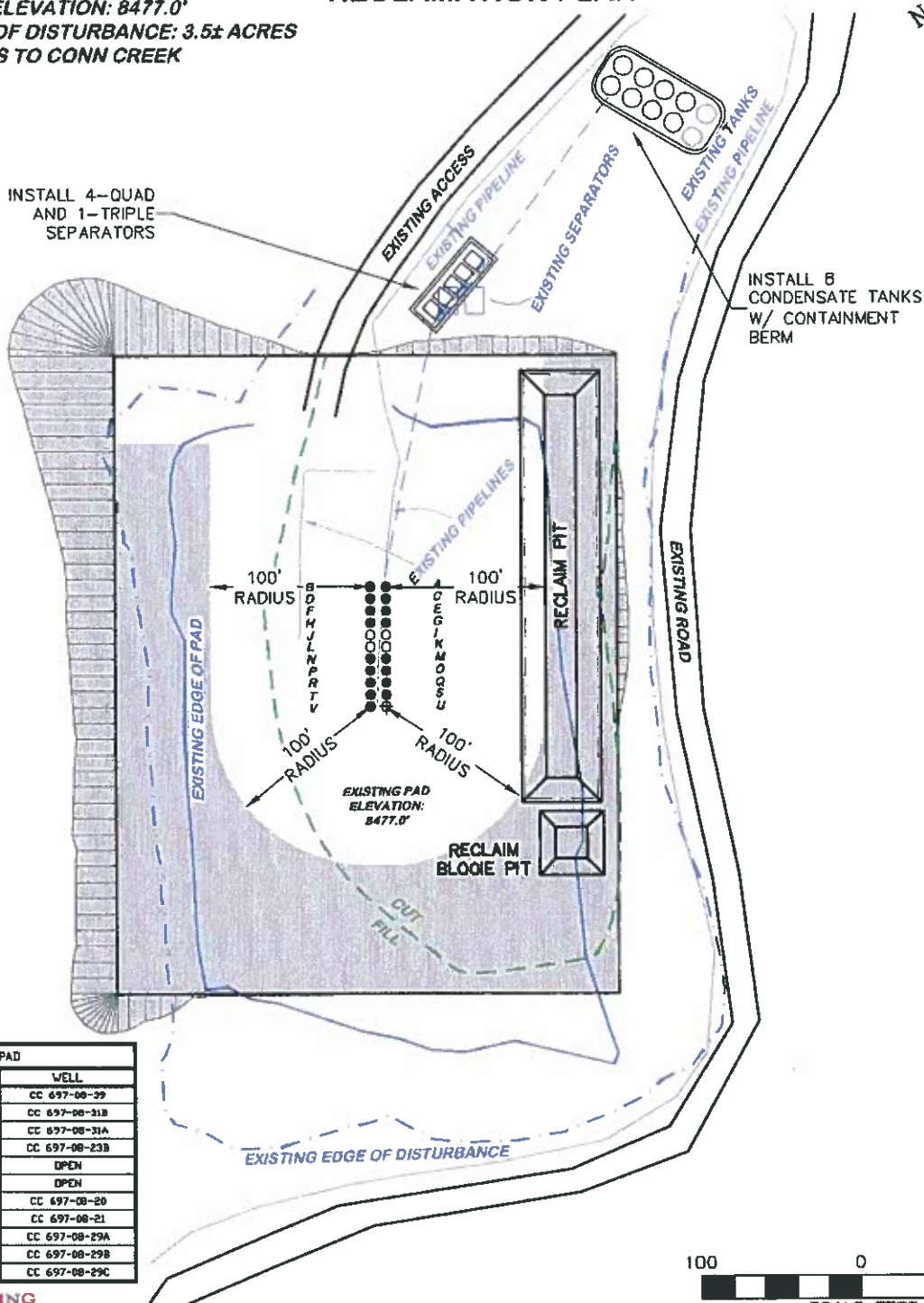


CURRENT ELEVATION: 8479.0'
FINAL ELEVATION: 8477.0'
PROPOSED AREA OF DISTURBANCE: 3.5± ACRES
DRAINS TO CONN CREEK

RECLAMATION PLAN

INSTALL 4-QUAD
AND 1-TRIPLE
SEPARATORS



CC 608-43-31 PAD			
SLOT	WELL	SLOT	WELL
A	CC 697-09-25A	B	CC 697-08-39
C	CC 697-09-25B	D	CC 697-08-31B
E	CC 697-08-47A	F	CC 697-08-31A
G	CC 697-08-47B	H	CC 697-08-23B
I	OPEN	J	OPEN
K	OPEN	L	OPEN
M	CC 697-08-37A	N	CC 697-08-20
O	CC 697-08-37B	P	CC 697-08-21
Q	CC 697-08-45	R	CC 697-08-29A
S	CC 697-08-45B	T	CC 697-08-29B
U	CC 608-43-31(EXISTING)	V	CC 697-08-29C

**BEFORE DIGGING
CALL FOR
UTILITY LINE LOCATION**

NOTE: THE EARTH QUANTITIES ON
THIS DRAWING ARE ESTIMATED AND
THE USE OF SAID QUANTITIES IS AT
THE RESPONSIBILITY OF THE USER.

CC 608-43-31 PAD



RIFFIN & ASSOCIATES, INC.

(307) 382-5020

1414 ELK ST., ROCK SPRINGS, WY 82901

DRAWN: 7/8/10 - DEH

SCALE: 1" = 100'

REVISED: N/A

DRG JOB No. 11695

EXHIBIT 2C

CONSTRUCTION LAYOUT DRAWING 4 OF 5

PROPOSED RECLAMATION

OXY USA WTP LP

**CASCADE CREEK 697-08-20, 21, 23B, 29A, 29B, 29C, 31A,
31B, 37A, 37B, 39, 45, 46B, 47A, 47B, 697-09-25A, 25B,
NESE, SECTION 8, T. 6 S., R. 97 W., 6th P.M.,
GARFIELD COUNTY, COLORADO**