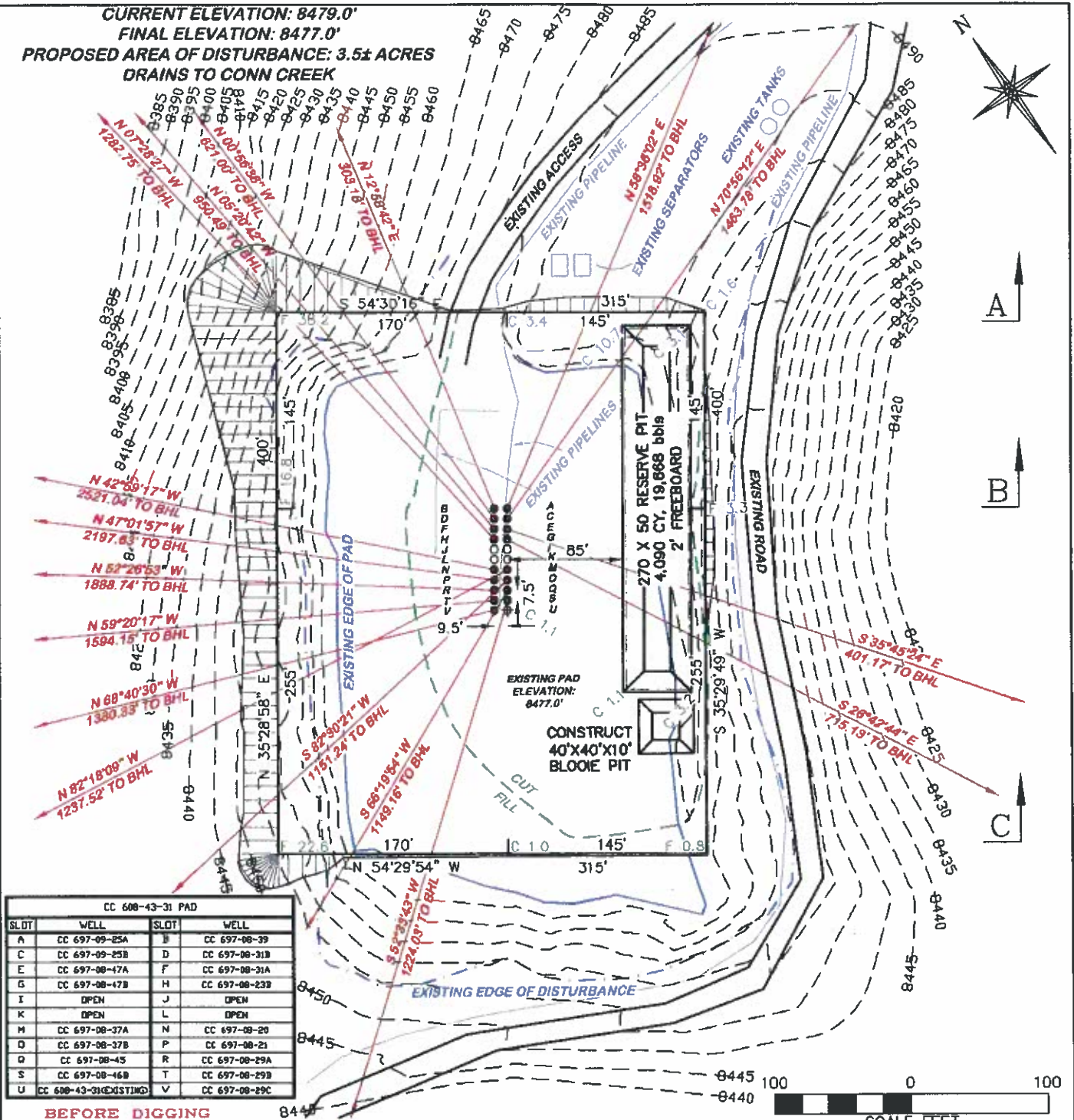


CURRENT ELEVATION: 8479.0'  
 FINAL ELEVATION: 8477.0'  
 PROPOSED AREA OF DISTURBANCE: 3.5± ACRES  
 DRAINS TO CONN CREEK



RIFFIN & ASSOCIATES, INC.  
 1414 ELK ST., ROCK SPRINGS, WY 82901

(307) 362-0028

DRAWN: 12/12/08 - WWG

SCALE: 1" = 100'

REVISED: 7/8/10 - DEH

DRG JOB No. 11695

PAD EXPANSION

EXHIBIT 2