

Multi Well Plan

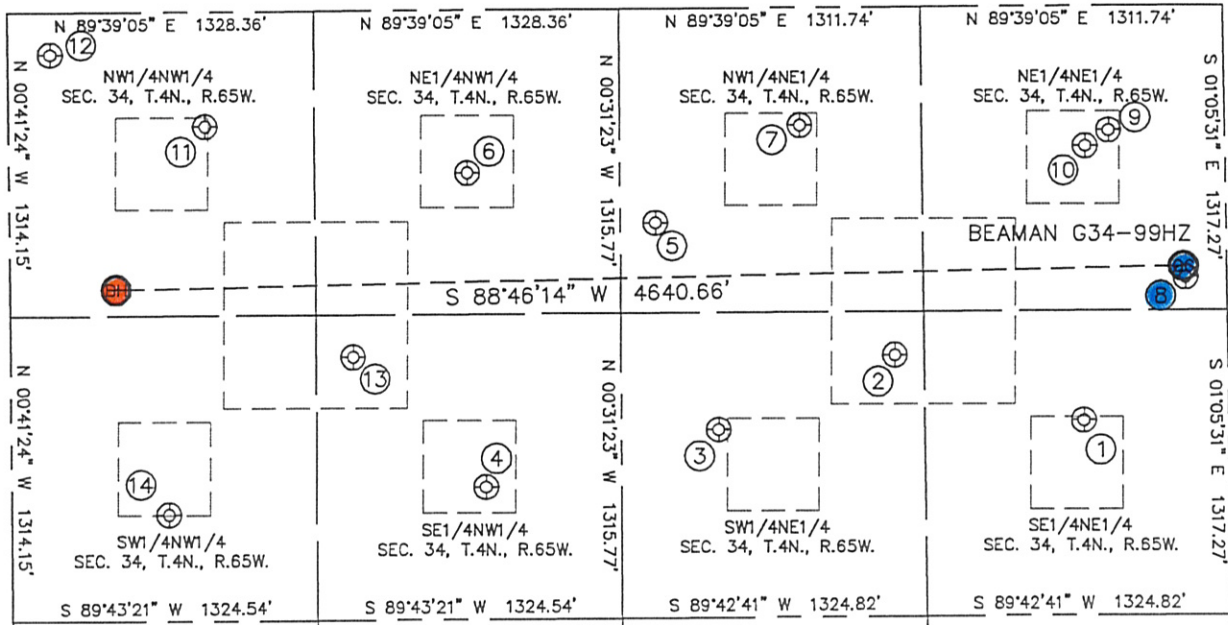
Lat40°, LLC

1635 Foxtrail Drive, Suite 325

Loveland, CO 80538

SITE SKETCH

SECTION: 34
TOWNSHIP: 4N
RANGE: 65W



①

BOCKIUS G34-8G
SE1/4NE1/4
1790' FNL
626' FEL
LAT-40.27117N
LONG-104.64220W
PDOP: 2.9
ELEV: 4741

②

BEAMAN G34-17
SW1/4NE1/4
1504' FNL
1446' FEL
LAT-40.27197N
LONG-104.64515W
PDOP: 1.6
ELEV: 4742

③

BOCKIUS 34-7G
SW1/4NE1/4
1820' FNL
2218' FEL
LAT-40.27111N
LONG-104.64791W
PDOP: 1.4
ELEV: 4753

④

CHAMP G34-6
SE1/4NW1/4
2061' FNL
2061' FWL
LAT-40.27046N
LONG-104.65154W
PDOP: 1.5
ELEV: 4760

⑤

BEAMAN G34-18
NW1/4NE1/4
927' FNL
2479' FEL
LAT-40.27356N
LONG-104.64887W
PDOP: 1.6
ELEV: 4748

⑥

MOSER 34-3G
NE1/4NW1/4
705' FNL
1990' FWL
LAT-40.27418N
LONG-104.65180W
PDOP: 0.7
ELEV: 4750

⑦

BOCKIUS 34-2G
NW1/4NE1/4
509' FNL
1845' FEL
LAT-40.27470N
LONG-104.64661W
PDOP: 2.2
ELEV: 4746

⑧

BEAMAN G35-31
NE1/4NE1/4
1175' FNL
180' FEL
LAT-40.27286N
LONG-104.64063W
PDOP: 1.1
ELEV: 4734

⑨

BOCKIUS 34-1G
NE1/4NE1/4
539' FNL
501' FEL
LAT-40.27461N
LONG-104.64180W
PDOP: 1.4
ELEV: 4734

⑩

BOCKIUS POOLING UNIT 1 (PER COGCC)
NE1/4NE1/4
606' FNL
603' FEL
LAT-40.27442N
LONG-104.64216W
PDOP: 1.4
ELEV: 4735

⑪

MOSER 34-4G
NW1/4NW1/4
496' FNL
851' FWL
LAT-40.27476N
LONG-104.65588W
PDOP: 1.6
ELEV: 4768

⑫

MOSER G34-30
NW1/4NW1/4
182' FNL
182' FWL
LAT-40.27563N
LONG-104.65828W
PDOP: 1.4
ELEV: 4776

⑬

MOSER 34-6G
SE1/4NW1/4
1496' FNL
1487' FWL
LAT-40.27201N
LONG-104.65360W
PDOP: 2.0
ELEV: 4759

⑭

MOSER 34-5G
SW1/4NW1/4
2169' FNL
681' FWL
LAT-40.27017N
LONG-104.65648W
PDOP: 2.2
ELEV: 4764

