

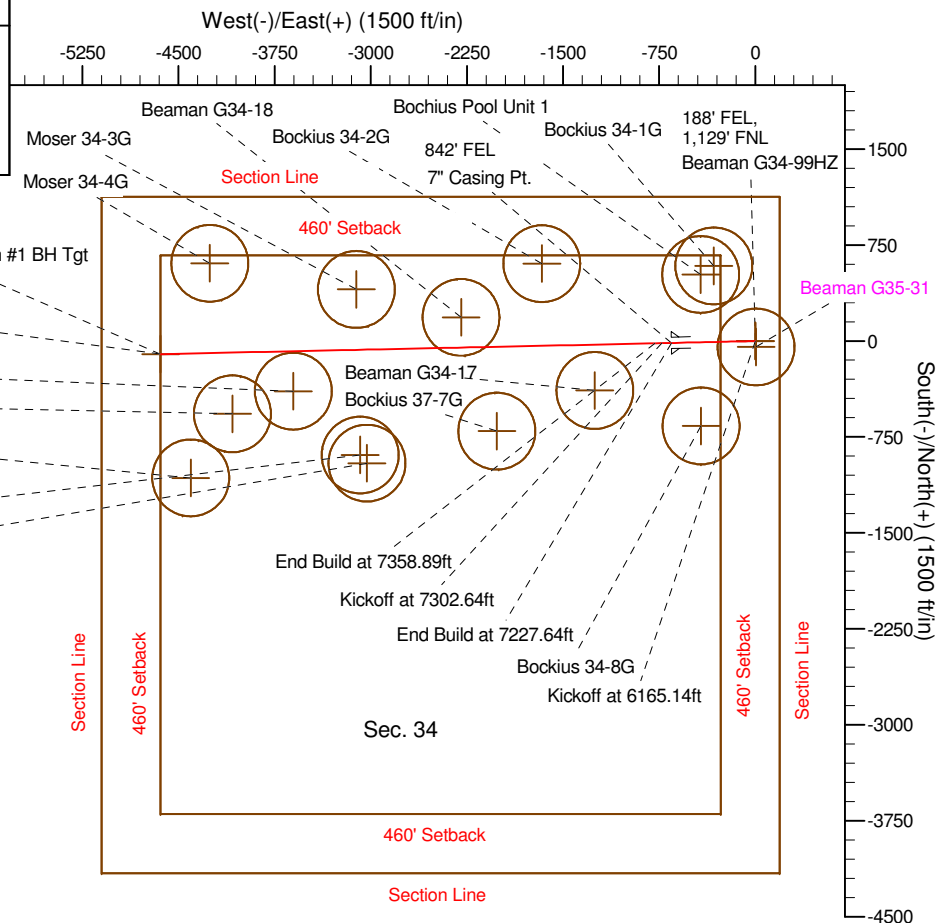
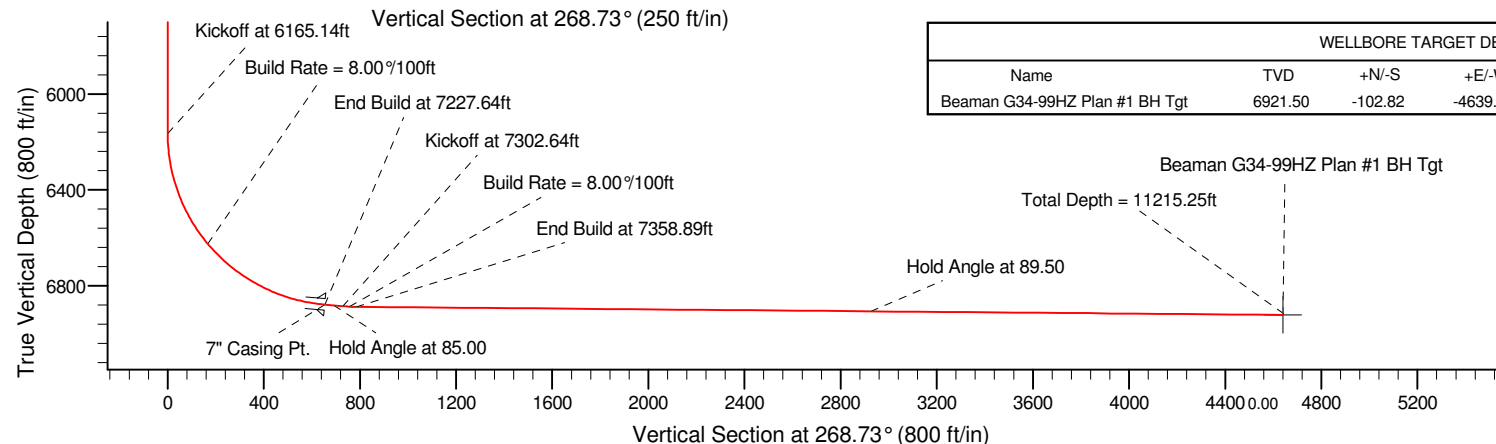
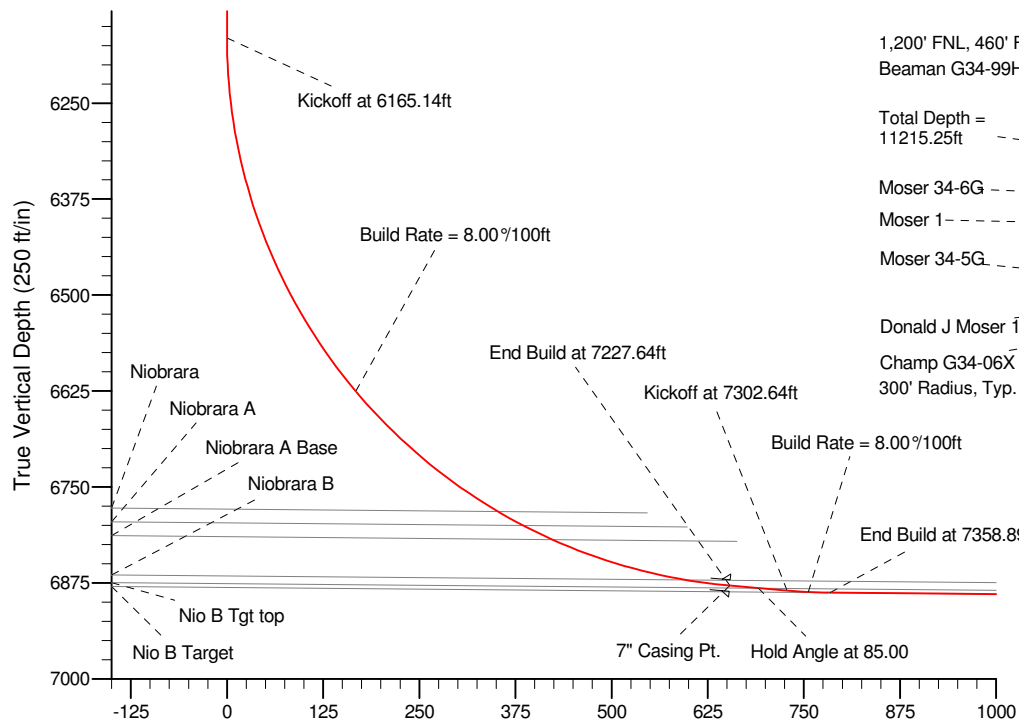
Project: Weld County, CO (NAD 83)  
Site: Sec. 34-T4N-R65W  
Well: Beaman G34-99HZ  
Wellbore: Plan #1  
Design: Plan #1 Proposal

# Noble Energy

**HALLIBURTON**  
Sperry Drilling

## SECTION DETAILS

Sec	MD	Inc	Azi	TVD	+N/-S	+E/-W	DLeg	TFace	VSec	Target
1	0.00	0.00	0.00	0.00	0.00	0.00	0.00	0.00	0.00	
2	6165.14	0.00	0.00	6165.14	0.00	0.00	0.00	0.00	0.00	
3	7227.64	85.00	268.73	6878.61	-14.45	-653.62	8.00	268.73	653.78	
4	7302.64	85.00	268.73	6885.15	-16.10	-728.31	0.00	0.00	728.49	
5	7358.89	89.50	268.73	6887.85	-17.34	-784.47	8.00	-0.05	784.66	
6	11215.25	89.50	268.73	6921.50	-102.82	-4639.74	0.00	0.00	4640.88	Beaman G34-99HZ Plan #1 BH Tgt



## WELLBORE TARGET DETAILS (LAT/LONG)

Name	TVD	+N/-S	+E/-W	Latitude	Longitude	Shape
Beaman G34-99HZ Plan #1 BH Tgt	6921.50	-102.82	-4639.74	40.272830	-104.657280	Point

## WELL DETAILS: Beaman G34-99HZ

North	Ground Level:	Latitude	Longitude
1343453.53	Easting 4734.00	40.272990	-104.640650

Plan: Plan #1 Proposal (Beaman G34-99HZ/Plan #1)

This plan is suitable for APD  
submittal per Noble Drilling  
Doug Sproul