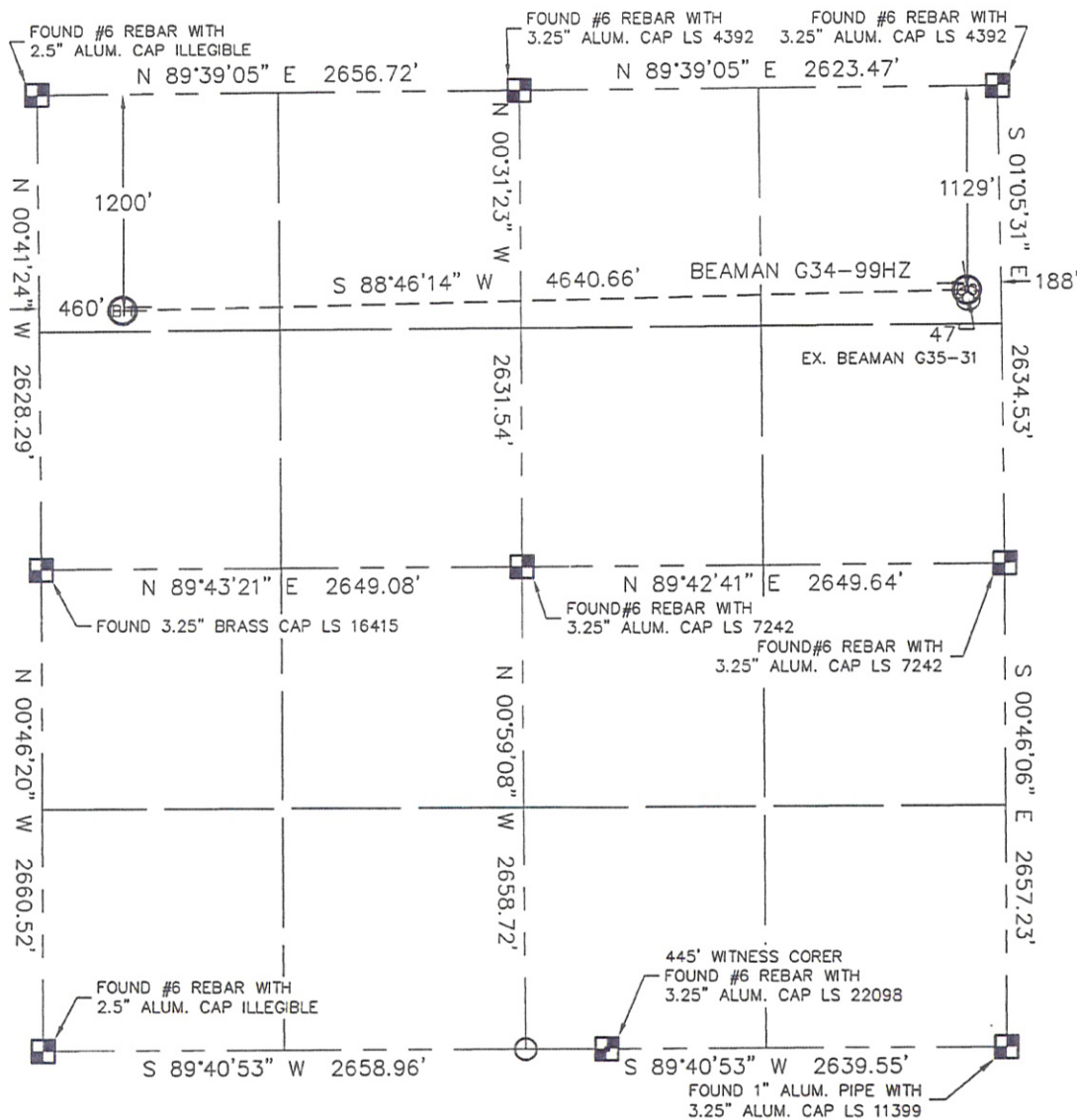


# WELL LOCATION CERTIFICATE

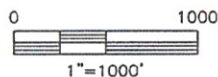
THIS MAP DOES NOT REPRESENT A BOUNDARY SURVEY

SECTION: 34  
TOWNSHIP: 4N  
RANGE: 65W



In accordance with a request from Nate McCorkell with Noble Energy Inc. Lat40°, LLC has determined the surface location of the BEAMAN G34-99HZ to be 1129' from the NORTH line and 188' from the EAST line and the bottom hole to be 1200' from the NORTH line and 460' from the WEST line as measured at right angles from the section line of Section 34, Township 4 North, Range 65 West of the Sixth Principal Meridian, County of Weld, State of Colorado.

I hereby state that this Well Location Certificate was prepared by me, or under my direct supervision, that the fieldwork was completed on 8/11/10, for and on behalf of Noble Energy Inc. That this is not a Land Survey Plat or an Improvement Survey Plat, and that it is not to be relied upon for establishment of fence, building, or other future improvement lines.



**NOTE:**

- 1) Bearings shown are Grid Bearings of the Colorado State Plane Coordinate System, North Zone, North American Datum 1983/2007. The lineal dimensions as contained herein are based upon the "U.S. Survey Foot."
- 2) Ground elevations are based on an observed GPS elevation (NAVD 1988 DATUM).
- 3) NEAREST EXISTING WELL: BEAMAN G35-31 47'
- 4) IMPROVEMENTS: See LOCATION DRAWING exhibit for all visible improvements within 400' of disturbed area.
- 5) SURFACE USE: PASTURE
- 6) INSTRUMENT OPERATOR: BRIAN BRINKMAN

**SURFACE LOCATION**  
LATITUDE: 40.27299°N  
LONGITUDE: 104.64065°W  
PDOP: 1.6  
ELEV: 4734  
1/4, 1/4: NE1/4NE1/4  
NEAREST PROPERTY LINE: 188' EAST

**BOTTOM HOLE**  
LATITUDE: 40.27283°N  
LONGITUDE: 104.65728°W

## LEGEND

- = ALIQUOT MONUMENT AS DESCRIBED
- = CALCULATED POSITION

Brian T. Brinkman—On behalf of Lat40° LLC  
Colorado Licensed Professional  
Land Surveyor No. 38175 PROJECT#: 2010068



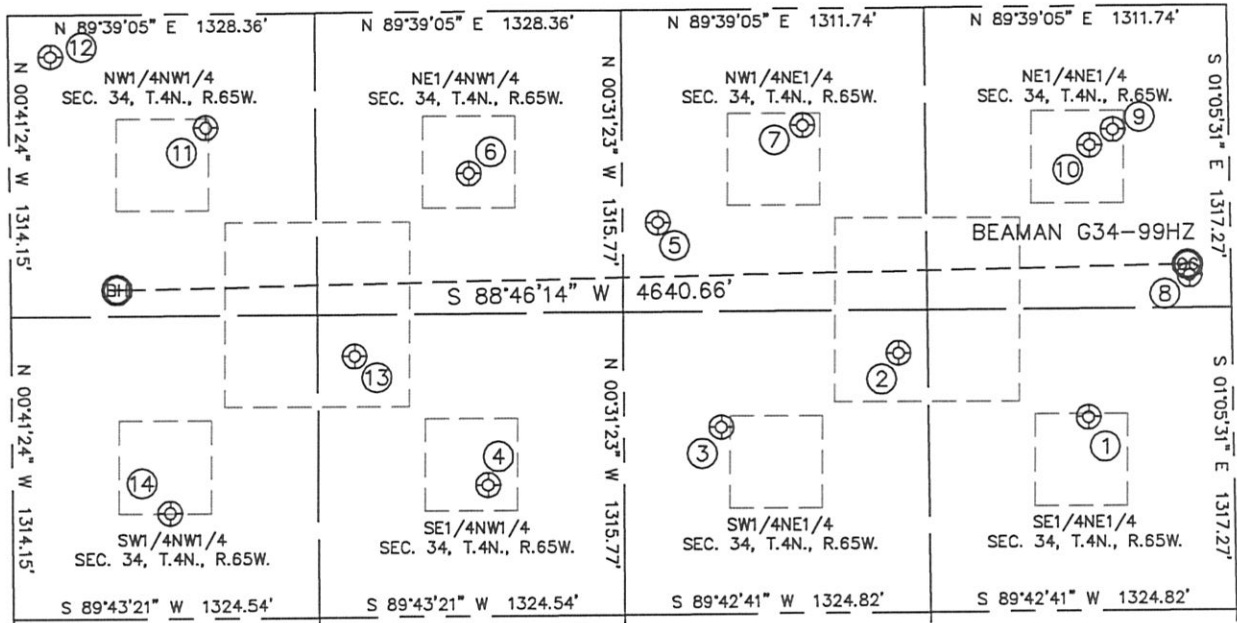
**NOTE:**  
According to Colorado law, you must commence any legal action based upon any defect in this W.L.C. within three years after you discover such defect. In no event, may any action based upon any defect in this survey be commenced more than ten years after the date of the certificate shown hereon. (13-80-105 C.R.S.)

Lat40°, LLC

1635 Foxtrail Drive, Suite 325

Loveland, CO 80538

## SITE SKETCH

SECTION: 34  
TOWNSHIP: 4N  
RANGE: 65W

①

BOCKIUS G34-8G  
SE1/4NE1/4  
1790' FNL  
626' FEL  
LAT-40.27117N  
LONG-104.64220W  
PDOP: 2.9  
ELEV: 4741

②

BEAMAN G34-17  
SW1/4NE1/4  
1504' FNL  
1446' FEL  
LAT-40.27197N  
LONG-104.64515W  
PDOP: 1.6  
ELEV: 4742

③

BOCKIUS 34-7G  
SW1/4NE1/4  
1820' FNL  
2218' FEL  
LAT-40.27111N  
LONG-104.64791W  
PDOP: 1.4  
ELEV: 4753

④

CHAMP G34-6  
SE1/4NW1/4  
2061' FNL  
2061' FWL  
LAT-40.27046N  
LONG-104.65154W  
PDOP: 1.5  
ELEV: 4760

⑤

BEAMAN G34-18  
NW1/4NE1/4  
927' FNL  
2479' FEL  
LAT-40.27356N  
LONG-104.64887W  
PDOP: 1.6  
ELEV: 4748

⑥

MOSER 34-3G  
NE1/4NW1/4  
705' FNL  
1990' FWL  
LAT-40.27418N  
LONG-104.65180W  
PDOP: 0.7  
ELEV: 4750

⑦

BOCKIUS 34-2G  
NW1/4NE1/4  
509' FNL  
1845' FEL  
LAT-40.27470N  
LONG-104.64661W  
PDOP: 2.2  
ELEV: 4746

⑧

BEAMAN G35-31  
NE1/4NE1/4  
1175' FNL  
180' FEL  
LAT-40.27286N  
LONG-104.64063W  
PDOP: 1.1  
ELEV: 4734

⑨

BOCKIUS 34-1G  
NE1/4NE1/4  
539' FNL  
501' FEL  
LAT-40.27461N  
LONG-104.64180W  
PDOP: 1.4  
ELEV: 4734

⑩

BOCKIUS POOLING UNIT 1 (PER COGCC)  
NE1/4NE1/4  
606' FNL  
603' FEL  
LAT-40.27442N  
LONG-104.64216W  
PDOP: 1.4  
ELEV: 4735

⑪

MOSER 34-4G  
NW1/4NW1/4  
496' FNL  
851' FWL  
LAT-40.27476N  
LONG-104.65588W  
PDOP: 1.6  
ELEV: 4768

⑫

MOSER G34-30  
NW1/4NW1/4  
182' FNL  
182' FWL  
LAT-40.27563N  
LONG-104.65828W  
PDOP: 1.4  
ELEV: 4776

⑬

MOSER 34-6G  
SE1/4NW1/4  
1496' FNL  
1487' FWL  
LAT-40.27201N  
LONG-104.65360W  
PDOP: 2.0  
ELEV: 4759

⑭

MOSER 34-5G  
SW1/4NW1/4  
2169' FNL  
681' FWL  
LAT-40.27017N  
LONG-104.65648W  
PDOP: 2.2  
ELEV: 4764

