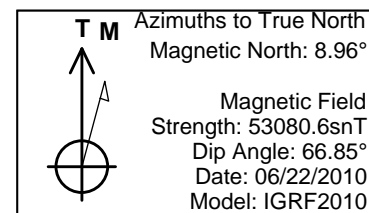
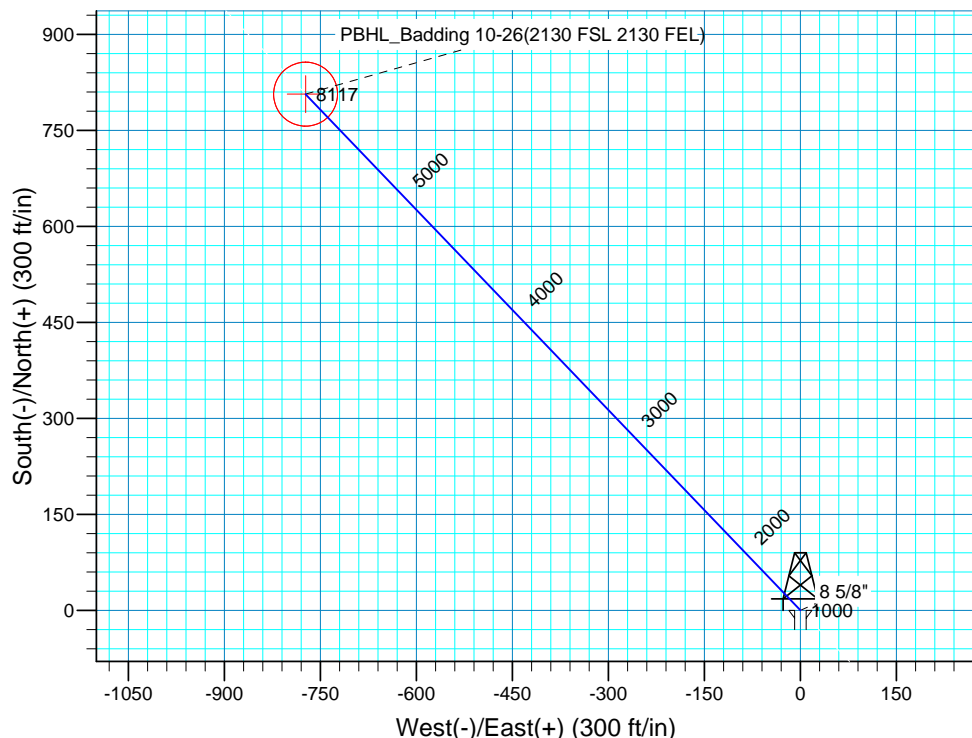
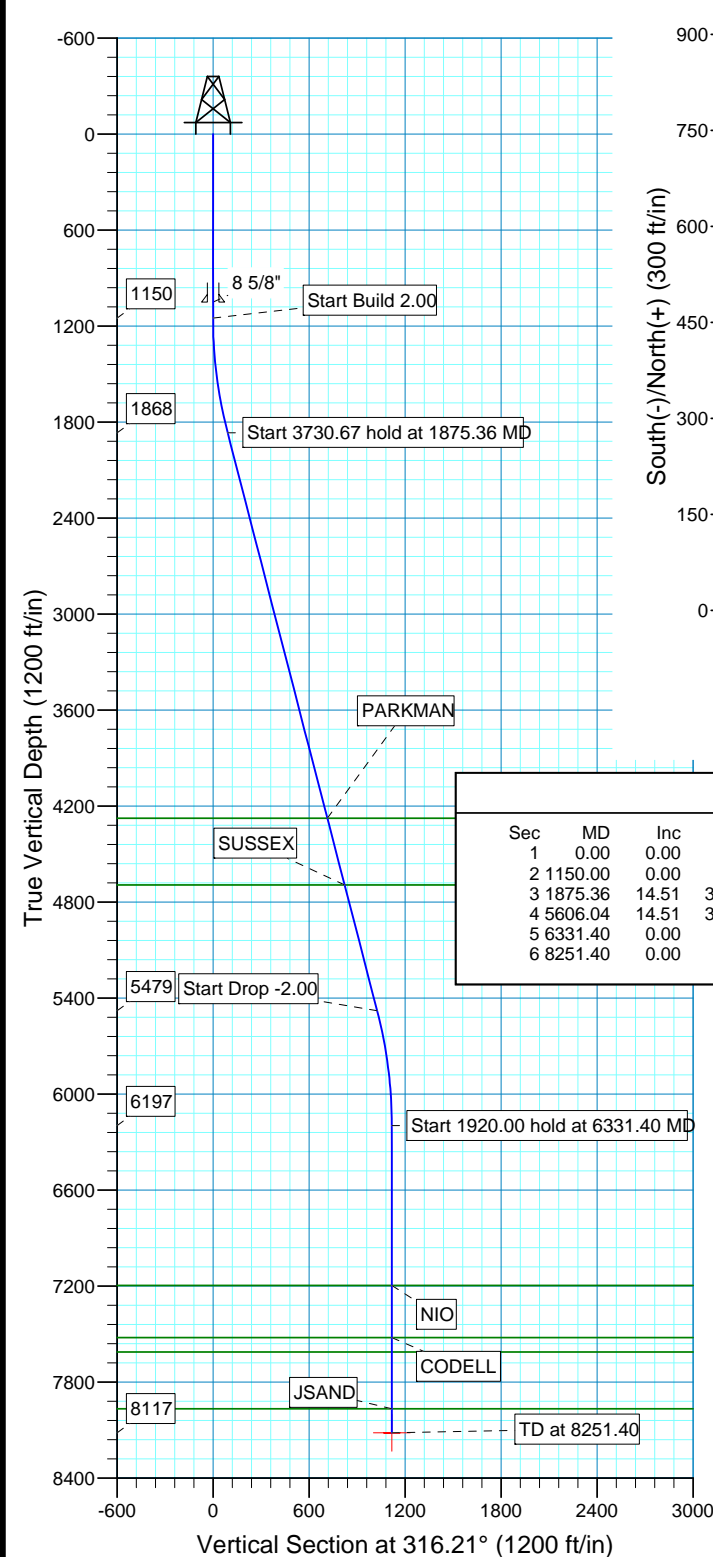


WELL DETAILS: P_Badding 10-26					
WELL @ 5082.00ft (Original Well Elev) 5067.00					
+N/-S	+E/-W	Northing	Easting	Latitude	Longitude
0.00	0.00	1282246.75	3212655.87	40° 6' 20.365 N	104° 44' 23.078 W



WELLBORE TARGET DETAILS (MAP CO-ORDINATES AND LAT/LONG)								
Name	TVD	+N/-S	+E/-W	Northing	Easting	Latitude	Longitude	Shape
PBHL	8117.00	806.52	-773.13	1283046.61	3211875.86	40° 6' 28.336 N	104° 44' 33.029 W	Circle (Radius: 50.00)



SECTION DETAILS										
Sec	MD	Inc	Azi	TVD	+N/-S	+E/-W	DLeg	TFace	VSec	Target
1	0.00	0.00	0.00	0.00	0.00	0.00	0.00	0.00	0.00	
2	1150.00	0.00	0.00	1150.00	0.00	0.00	0.00	0.00	0.00	
3	1875.36	14.51	316.21	1867.64	65.94	-63.21	2.00	316.21	91.34	
4	5606.04	14.51	316.21	5479.36	740.59	-709.91	0.00	0.00	1025.89	
5	6331.40	0.00	0.00	6197.00	806.53	-773.12	2.00	180.00	1117.23	
6	8251.40	0.00	0.00	8117.00	806.53	-773.12	0.00	0.00	1117.23	PBHL_Badding 10-26(2130 FSL 2130 FEL)

FORMATION TOP DETAILS		
TVDPath	MDPath	Formation
4276.00	4363.04	PARKMAN
4694.00	4794.81	SUSSEX
7197.00	7331.40	NIO
7522.00	7656.40	CODELL
7612.00	7746.40	GREENHORN
7967.00	8101.40	JSAND

PROJECT DETAILS: COLORADO NORTHERN ZONE - 83	
Geodetic System:	US State Plane 1983
Datum:	North American Datum 1983
Ellipsoid:	GRS 1980
Zone:	Colorado Northern Zone
Location:	SECTION 26 T2N R66W
System Datum:	Mean Sea Level
Local North:	True

US ROCKIES REGION PLANNING

COLORADO NORTHERN ZONE - 83

WELD_BADDING 20-26 PAD

P_Badding 10-26

P_Badding 10-26

Plan: PLAN #1 7-22-10 RHS

Standard Planning Report

22 July, 2010

Database:	EDM 2003.16 Single User Db	Local Co-ordinate Reference:	Well P_Badding 10-26
Company:	US ROCKIES REGION PLANNING	TVD Reference:	WELL @ 5082.00ft (Original Well Elev)
Project:	COLORADO NORTHERN ZONE - 83	MD Reference:	WELL @ 5082.00ft (Original Well Elev)
Site:	WELD_BADDING 20-26 PAD	North Reference:	True
Well:	P_Badding 10-26	Survey Calculation Method:	Minimum Curvature
Wellbore:	P_Badding 10-26		
Design:	PLAN #1 7-22-10 RHS		

Project	COLORADO NORTHERN ZONE - 83, KERR MCGEE OIL & GAS ONSHORE LP		
Map System:	US State Plane 1983	System Datum:	Mean Sea Level
Geo Datum:	North American Datum 1983		
Map Zone:	Colorado Northern Zone		

Site		WELD_BADDING 20-26 PAD, SECTION 26 T2N R66W			
Site Position:		Northing:	1,282,246.75 ft	Latitude:	40° 6' 20.365 N
From:	Lat/Long	Easting:	3,212,655.87 ft	Longitude:	104° 44' 23.078 W
Position Uncertainty:	0.00 ft	Slot Radius:	in	Grid Convergence:	0.49 °

Well	P_Badding 10-26					
Well Position	+N-S	0.00 ft	Northing:	1,282,246.75 ft	Latitude:	40° 6' 20.365 N
	+E-W	0.00 ft	Easting:	3,212,655.87 ft	Longitude:	104° 44' 23.078 W
Position Uncertainty		0.00 ft	Wellhead Elevation:	ft	Ground Level:	5,067.00 ft

Wellbore	P_Badding 10-26				
Magnetics	Model Name	Sample Date	Declination (°)	Dip Angle (°)	Field Strength (nT)
	IGRF2010	06/22/2010	8.96	66.85	53,081

Design	PLAN #1 7-22-10 RHS			
Audit Notes:				
Version:	Phase:	PLAN	Tie On Depth:	0.00
Vertical Section:	Depth From (TVD) (ft)	+N/-S (ft)	+E/-W (ft)	Direction (°)
	0.00	0.00	0.00	316.21

Plan Sections										
Measured Depth (ft)	Inclination (°)	Azimuth (°)	Vertical Depth (ft)	+N/-S (ft)	+E/-W (ft)	Dogleg Rate (°/100ft)	Build Rate (°/100ft)	Turn Rate (°/100ft)	TFO (°)	Target
0.00	0.00	0.00	0.00	0.00	0.00	0.00	0.00	0.00	0.00	
1,150.00	0.00	0.00	1,150.00	0.00	0.00	0.00	0.00	0.00	0.00	
1,875.36	14.51	316.21	1,867.64	65.94	-63.21	2.00	2.00	0.00	316.21	
5,606.04	14.51	316.21	5,479.36	740.59	-709.91	0.00	0.00	0.00	0.00	
6,331.40	0.00	0.00	6,197.00	806.53	-773.12	2.00	-2.00	0.00	180.00	
8,251.40	0.00	0.00	8,117.00	806.53	-773.12	0.00	0.00	0.00	0.00	PBHL_Badding 10-

Database:	EDM 2003.16 Single User Db	Local Co-ordinate Reference:	Well P_Badding 10-26
Company:	US ROCKIES REGION PLANNING	TVD Reference:	WELL @ 5082.00ft (Original Well Elev)
Project:	COLORADO NORTHERN ZONE - 83	MD Reference:	WELL @ 5082.00ft (Original Well Elev)
Site:	WELD_BADDING 20-26 PAD	North Reference:	True
Well:	P_Badding 10-26	Survey Calculation Method:	Minimum Curvature
Wellbore:	P_Badding 10-26		
Design:	PLAN #1 7-22-10 RHS		

Planned Survey

Measured Depth (ft)	Inclination (°)	Azimuth (°)	Vertical Depth (ft)	+N/-S (ft)	+E/-W (ft)	Vertical Section (ft)	Dogleg Rate (°/100ft)	Build Rate (°/100ft)	Turn Rate (°/100ft)
0.00	0.00	0.00	0.00	0.00	0.00	0.00	0.00	0.00	0.00
100.00	0.00	0.00	100.00	0.00	0.00	0.00	0.00	0.00	0.00
200.00	0.00	0.00	200.00	0.00	0.00	0.00	0.00	0.00	0.00
300.00	0.00	0.00	300.00	0.00	0.00	0.00	0.00	0.00	0.00
400.00	0.00	0.00	400.00	0.00	0.00	0.00	0.00	0.00	0.00
500.00	0.00	0.00	500.00	0.00	0.00	0.00	0.00	0.00	0.00
600.00	0.00	0.00	600.00	0.00	0.00	0.00	0.00	0.00	0.00
700.00	0.00	0.00	700.00	0.00	0.00	0.00	0.00	0.00	0.00
800.00	0.00	0.00	800.00	0.00	0.00	0.00	0.00	0.00	0.00
900.00	0.00	0.00	900.00	0.00	0.00	0.00	0.00	0.00	0.00
1,000.00	0.00	0.00	1,000.00	0.00	0.00	0.00	0.00	0.00	0.00
1,050.00	0.00	0.00	1,050.00	0.00	0.00	0.00	0.00	0.00	0.00
8 5/8"									
1,100.00	0.00	0.00	1,100.00	0.00	0.00	0.00	0.00	0.00	0.00
1,150.00	0.00	0.00	1,150.00	0.00	0.00	0.00	0.00	0.00	0.00
Start Build 2.00									
1,200.00	1.00	316.21	1,200.00	0.31	-0.30	0.44	2.00	2.00	0.00
1,300.00	3.00	316.21	1,299.93	2.83	-2.72	3.93	2.00	2.00	0.00
1,400.00	5.00	316.21	1,399.68	7.87	-7.54	10.90	2.00	2.00	0.00
1,500.00	7.00	316.21	1,499.13	15.42	-14.78	21.35	2.00	2.00	0.00
1,600.00	9.00	316.21	1,598.15	25.46	-24.41	35.27	2.00	2.00	0.00
1,700.00	11.00	316.21	1,696.63	38.00	-36.42	52.63	2.00	2.00	0.00
1,800.00	13.00	316.21	1,794.44	53.00	-50.81	73.42	2.00	2.00	0.00
1,875.36	14.51	316.21	1,867.64	65.94	-63.21	91.34	2.00	2.00	0.00
Start 3730.67 hold at 1875.36 MD									
1,900.00	14.51	316.21	1,891.49	70.39	-67.48	97.51	0.00	0.00	0.00
2,000.00	14.51	316.21	1,988.30	88.48	-84.81	122.56	0.00	0.00	0.00
2,100.00	14.51	316.21	2,085.11	106.56	-102.15	147.61	0.00	0.00	0.00
2,200.00	14.51	316.21	2,181.92	124.65	-119.48	172.66	0.00	0.00	0.00
2,300.00	14.51	316.21	2,278.74	142.73	-136.82	197.71	0.00	0.00	0.00
2,400.00	14.51	316.21	2,375.55	160.81	-154.15	222.76	0.00	0.00	0.00
2,500.00	14.51	316.21	2,472.36	178.90	-171.49	247.81	0.00	0.00	0.00
2,600.00	14.51	316.21	2,569.17	196.98	-188.82	272.87	0.00	0.00	0.00
2,700.00	14.51	316.21	2,665.98	215.06	-206.16	297.92	0.00	0.00	0.00
2,800.00	14.51	316.21	2,762.79	233.15	-223.49	322.97	0.00	0.00	0.00
2,900.00	14.51	316.21	2,859.60	251.23	-240.83	348.02	0.00	0.00	0.00
3,000.00	14.51	316.21	2,956.42	269.32	-258.16	373.07	0.00	0.00	0.00
3,100.00	14.51	316.21	3,053.23	287.40	-275.50	398.12	0.00	0.00	0.00
3,200.00	14.51	316.21	3,150.04	305.48	-292.83	423.17	0.00	0.00	0.00
3,300.00	14.51	316.21	3,246.85	323.57	-310.17	448.22	0.00	0.00	0.00
3,400.00	14.51	316.21	3,343.66	341.65	-327.50	473.27	0.00	0.00	0.00
3,500.00	14.51	316.21	3,440.47	359.74	-344.84	498.32	0.00	0.00	0.00
3,600.00	14.51	316.21	3,537.29	377.82	-362.17	523.37	0.00	0.00	0.00
3,700.00	14.51	316.21	3,634.10	395.90	-379.51	548.42	0.00	0.00	0.00
3,800.00	14.51	316.21	3,730.91	413.99	-396.84	573.47	0.00	0.00	0.00
3,900.00	14.51	316.21	3,827.72	432.07	-414.17	598.52	0.00	0.00	0.00
4,000.00	14.51	316.21	3,924.53	450.15	-431.51	623.57	0.00	0.00	0.00
4,100.00	14.51	316.21	4,021.34	468.24	-448.84	648.62	0.00	0.00	0.00
4,200.00	14.51	316.21	4,118.15	486.32	-466.18	673.67	0.00	0.00	0.00
4,300.00	14.51	316.21	4,214.97	504.41	-483.51	698.72	0.00	0.00	0.00
4,363.04	14.51	316.21	4,276.00	515.81	-494.44	714.51	0.00	0.00	0.00
PARKMAN									
4,400.00	14.51	316.21	4,311.78	522.49	-500.85	723.77	0.00	0.00	0.00

Database:	EDM 2003.16 Single User Db	Local Co-ordinate Reference:	Well P_Badding 10-26
Company:	US ROCKIES REGION PLANNING	TVD Reference:	WELL @ 5082.00ft (Original Well Elev)
Project:	COLORADO NORTHERN ZONE - 83	MD Reference:	WELL @ 5082.00ft (Original Well Elev)
Site:	WELD_BADDING 20-26 PAD	North Reference:	True
Well:	P_Badding 10-26	Survey Calculation Method:	Minimum Curvature
Wellbore:	P_Badding 10-26		
Design:	PLAN #1 7-22-10 RHS		

Planned Survey

Measured Depth (ft)	Inclination (°)	Azimuth (°)	Vertical Depth (ft)	+N/-S (ft)	+E/-W (ft)	Vertical Section (ft)	Dogleg Rate (°/100ft)	Build Rate (°/100ft)	Turn Rate (°/100ft)
4,500.00	14.51	316.21	4,408.59	540.57	-518.18	748.82	0.00	0.00	0.00
4,600.00	14.51	316.21	4,505.40	558.66	-535.52	773.87	0.00	0.00	0.00
4,700.00	14.51	316.21	4,602.21	576.74	-552.85	798.92	0.00	0.00	0.00
4,794.81	14.51	316.21	4,694.00	593.89	-569.29	822.67	0.00	0.00	0.00
SUSSEX									
4,800.00	14.51	316.21	4,699.02	594.82	-570.19	823.97	0.00	0.00	0.00
4,900.00	14.51	316.21	4,795.84	612.91	-587.52	849.02	0.00	0.00	0.00
5,000.00	14.51	316.21	4,892.65	630.99	-604.86	874.07	0.00	0.00	0.00
5,100.00	14.51	316.21	4,989.46	649.08	-622.19	899.12	0.00	0.00	0.00
5,200.00	14.51	316.21	5,086.27	667.16	-639.53	924.17	0.00	0.00	0.00
5,300.00	14.51	316.21	5,183.08	685.24	-656.86	949.22	0.00	0.00	0.00
5,400.00	14.51	316.21	5,279.89	703.33	-674.20	974.27	0.00	0.00	0.00
5,500.00	14.51	316.21	5,376.71	721.41	-691.53	999.32	0.00	0.00	0.00
5,600.00	14.51	316.21	5,473.52	739.49	-708.87	1,024.38	0.00	0.00	0.00
5,606.04	14.51	316.21	5,479.36	740.59	-709.91	1,025.89	0.00	0.00	0.00
Start Drop -2.00									
5,700.00	12.63	316.21	5,570.70	756.50	-725.17	1,047.93	2.00	-2.00	0.00
5,800.00	10.63	316.21	5,668.64	771.05	-739.11	1,068.08	2.00	-2.00	0.00
5,900.00	8.63	316.21	5,767.23	783.12	-750.69	1,084.81	2.00	-2.00	0.00
6,000.00	6.63	316.21	5,866.34	792.70	-759.87	1,098.08	2.00	-2.00	0.00
6,100.00	4.63	316.21	5,965.85	799.78	-766.66	1,107.89	2.00	-2.00	0.00
6,200.00	2.63	316.21	6,065.64	804.35	-771.04	1,114.22	2.00	-2.00	0.00
6,300.00	0.63	316.21	6,165.60	806.40	-773.00	1,117.06	2.00	-2.00	0.00
6,331.40	0.00	0.00	6,197.00	806.53	-773.12	1,117.23	2.00	-2.00	0.00
Start 1920.00 hold at 6331.40 MD									
6,400.00	0.00	0.00	6,265.60	806.53	-773.12	1,117.23	0.00	0.00	0.00
6,500.00	0.00	0.00	6,365.60	806.53	-773.12	1,117.23	0.00	0.00	0.00
6,600.00	0.00	0.00	6,465.60	806.53	-773.12	1,117.23	0.00	0.00	0.00
6,700.00	0.00	0.00	6,565.60	806.53	-773.12	1,117.23	0.00	0.00	0.00
6,800.00	0.00	0.00	6,665.60	806.53	-773.12	1,117.23	0.00	0.00	0.00
6,900.00	0.00	0.00	6,765.60	806.53	-773.12	1,117.23	0.00	0.00	0.00
7,000.00	0.00	0.00	6,865.60	806.53	-773.12	1,117.23	0.00	0.00	0.00
7,100.00	0.00	0.00	6,965.60	806.53	-773.12	1,117.23	0.00	0.00	0.00
7,200.00	0.00	0.00	7,065.60	806.53	-773.12	1,117.23	0.00	0.00	0.00
7,300.00	0.00	0.00	7,165.60	806.53	-773.12	1,117.23	0.00	0.00	0.00
7,331.40	0.00	0.00	7,197.00	806.53	-773.12	1,117.23	0.00	0.00	0.00
NIO									
7,400.00	0.00	0.00	7,265.60	806.53	-773.12	1,117.23	0.00	0.00	0.00
7,500.00	0.00	0.00	7,365.60	806.53	-773.12	1,117.23	0.00	0.00	0.00
7,600.00	0.00	0.00	7,465.60	806.53	-773.12	1,117.23	0.00	0.00	0.00
7,656.40	0.00	0.00	7,522.00	806.53	-773.12	1,117.23	0.00	0.00	0.00
CODELL									
7,700.00	0.00	0.00	7,565.60	806.53	-773.12	1,117.23	0.00	0.00	0.00
7,746.40	0.00	0.00	7,612.00	806.53	-773.12	1,117.23	0.00	0.00	0.00
GREENHORN									
7,800.00	0.00	0.00	7,665.60	806.53	-773.12	1,117.23	0.00	0.00	0.00
7,900.00	0.00	0.00	7,765.60	806.53	-773.12	1,117.23	0.00	0.00	0.00
8,000.00	0.00	0.00	7,865.60	806.53	-773.12	1,117.23	0.00	0.00	0.00
8,100.00	0.00	0.00	7,965.60	806.53	-773.12	1,117.23	0.00	0.00	0.00
8,101.40	0.00	0.00	7,967.00	806.53	-773.12	1,117.23	0.00	0.00	0.00
JSAND									
8,200.00	0.00	0.00	8,065.60	806.53	-773.12	1,117.23	0.00	0.00	0.00
8,251.40	0.00	0.00	8,117.00	806.53	-773.12	1,117.23	0.00	0.00	0.00

Database:	EDM 2003.16 Single User Db	Local Co-ordinate Reference:	Well P_Badding 10-26
Company:	US ROCKIES REGION PLANNING	TVD Reference:	WELL @ 5082.00ft (Original Well Elev)
Project:	COLORADO NORTHERN ZONE - 83	MD Reference:	WELL @ 5082.00ft (Original Well Elev)
Site:	WELD_BADDING 20-26 PAD	North Reference:	True
Well:	P_Badding 10-26	Survey Calculation Method:	Minimum Curvature
Wellbore:	P_Badding 10-26		
Design:	PLAN #1 7-22-10 RHS		

Planned Survey									
Measured Depth (ft)	Inclination (°)	Azimuth (°)	Vertical Depth (ft)	+N/-S (ft)	+E/-W (ft)	Vertical Section (ft)	Dogleg Rate (°/100ft)	Build Rate (°/100ft)	Turn Rate (°/100ft)
PBHL_Badding 10-26(2130 FSL 2130 FEL)									

Targets									
Target Name	- hit/miss target	Dip Angle (°)	Dip Dir. (°)	TVD (ft)	+N/-S (ft)	+E/-W (ft)	Northing (ft)	Easting (ft)	Latitude Longitude
PBHL_Badding 10-26	- plan hits target center	0.00	0.00	8,117.00	806.52	-773.13	1,283,046.61	3,211,875.86	40° 6' 28.336 N 104° 44' 33.029 W
	- Circle (radius 50.00)								

Casing Points					
Measured Depth (ft)	Vertical Depth (ft)	Name	Casing Diameter (in)	Hole Diameter (in)	
1,050.00	1,050.00	8 5/8"	8.620	11.000	

Formations						
Measured Depth (ft)	Vertical Depth (ft)	Name	Lithology	Dip (°)	Dip Direction (°)	
7,331.40	7,197.00	NIO				
4,794.81	4,694.00	SUSSEX				
7,656.40	7,522.00	CODELL				
7,746.40	7,612.00	GREENHORN				
8,101.40	7,967.00	JSAND				
4,363.04	4,276.00	PARKMAN				

Plan Annotations					
Measured Depth (ft)	Vertical Depth (ft)	Local Coordinates			
		+N/-S (ft)	+E/-W (ft)	Comment	
1,150.00	1,150.00	0.00	0.00	Start Build 2.00	
1,875.36	1,867.64	65.94	-63.21	Start 3730.67 hold at 1875.36 MD	
5,606.04	5,479.36	740.59	-709.91	Start Drop -2.00	
6,331.40	6,197.00	806.53	-773.12	Start 1920.00 hold at 6331.40 MD	
8,251.40	8,117.00	806.53	-773.12	TD at 8251.40	