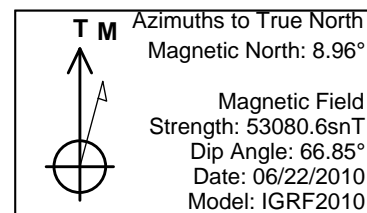
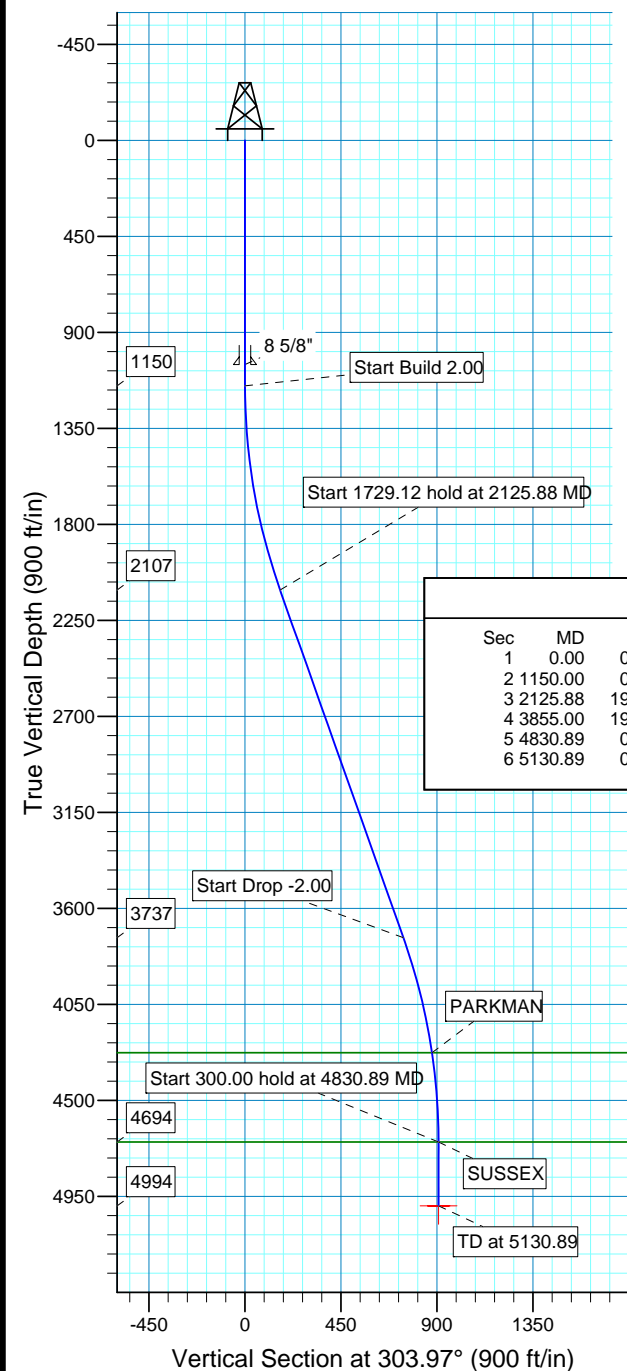
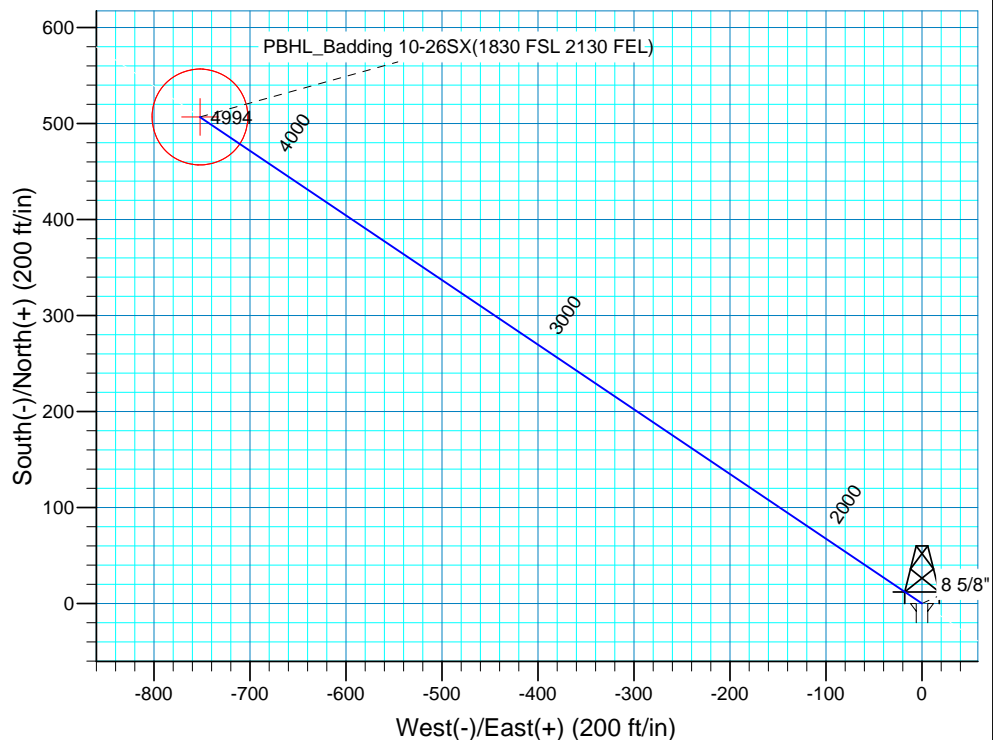


WELL DETAILS: P_Badding 10-26SX					
WELL @ 5082.00ft (Original Well Elev) 5067.00					
+N/-S	+E/-W	Northing	Easting	Latitude	Longitude
0.00	0.00	1282246.56	3212636.00	40° 6' 20.365 N	104° 44' 23.334 W



WELLBORE TARGET DETAILS (MAP CO-ORDINATES AND LAT/LONG)								
Name	TVD	+N/-S	+E/-W	Northing	Easting	Latitude	Longitude	Shape
PBHL	4994.00	506.74	-752.15	1282746.83	3211879.54	40° 6' 25.373 N	104° 44' 33.014 W	Circle (Radius: 50.00)



SECTION DETAILS										
Sec	MD	Inc	Azi	TVD	+N/-S	+E/-W	DLeg	TFace	VSec	Target
1	0.00	0.00	0.00	0.00	0.00	0.00	0.00	0.00	0.00	
2	1150.00	0.00	0.00	1150.00	0.00	0.00	0.00	0.00	0.00	
3	2125.88	19.52	303.97	2107.12	91.98	-136.52	2.00	303.97	164.62	
4	3855.00	19.52	303.97	3736.88	414.76	-615.63	0.00	0.00	742.31	
5	4830.89	0.00	0.00	4694.00	506.74	-752.15	2.00	180.00	906.93	
6	5130.89	0.00	0.00	4994.00	506.74	-752.15	0.00	0.00	906.93	PBHL_Badding 10-26SX(1830 FSL 2130 FEL)

FORMATION TOP DETAILS		
TVDPath	MDPath	Formation
4276.00	4411.39	PARKMAN
4694.00	4830.89	SUSSEX

PROJECT DETAILS: COLORADO NORTHERN ZONE - 83	
Geodetic System:	US State Plane 1983
Datum:	North American Datum 1983
Ellipsoid:	GRS 1980
Zone:	Colorado Northern Zone
Location:	SECTION 26 T2N R66W
System Datum:	Mean Sea Level
Local North:	True

# **US ROCKIES REGION PLANNING**

**COLORADO NORTHERN ZONE - 83**

**WELD\_BADDING 20-26 PAD**

**P\_Badding 10-26SX**

**P\_Badding 10-26SX**

**Plan: PLAN #1 7-22-10 RHS**

## **Standard Planning Report**

**22 July, 2010**

<b>Database:</b>	EDM 2003.16 Single User Db	<b>Local Co-ordinate Reference:</b>	Well P_Badding 10-26SX
<b>Company:</b>	US ROCKIES REGION PLANNING	<b>TVD Reference:</b>	WELL @ 5082.00ft (Original Well Elev)
<b>Project:</b>	COLORADO NORTHERN ZONE - 83	<b>MD Reference:</b>	WELL @ 5082.00ft (Original Well Elev)
<b>Site:</b>	WELD_BADDING 20-26 PAD	<b>North Reference:</b>	True
<b>Well:</b>	P_Badding 10-26SX	<b>Survey Calculation Method:</b>	Minimum Curvature
<b>Wellbore:</b>	P_Badding 10-26SX		
<b>Design:</b>	PLAN #1 7-22-10 RHS		

<b>Project</b>	COLORADO NORTHERN ZONE - 83, KERR MCGEE OIL & GAS ONSHORE LP		
<b>Map System:</b>	US State Plane 1983	<b>System Datum:</b>	Mean Sea Level
<b>Geo Datum:</b>	North American Datum 1983		
<b>Map Zone:</b>	Colorado Northern Zone		

Site		WELD_BADDING 20-26 PAD, SECTION 26 T2N R66W			
Site Position:		Northing:	1,282,246.75 ft	Latitude:	40° 6' 20.365 N
From:	Lat/Long	Easting:	3,212,655.87 ft	Longitude:	104° 44' 23.078 W
Position Uncertainty:	0.00 ft	Slot Radius:	in	Grid Convergence:	0.49 °

Well	P_Badding 10-26SX					
Well Position	+N-S	0.00 ft	Northing:	1,282,246.56 ft	Latitude:	40° 6' 20.365 N
	+E-W	0.00 ft	Easting:	3,212,636.00 ft	Longitude:	104° 44' 23.334 W
Position Uncertainty		0.00 ft	Wellhead Elevation:	ft	Ground Level:	5,067.00 ft

<b>Wellbore</b>	P_Badding 10-26SX				
<b>Magnetics</b>	<b>Model Name</b>	<b>Sample Date</b>	<b>Declination (°)</b>	<b>Dip Angle (°)</b>	<b>Field Strength (nT)</b>
	IGRF2010	06/22/2010	8.96	66.85	53,081

<b>Design</b>	PLAN #1 7-22-10 RHS			
<b>Audit Notes:</b>				
<b>Version:</b>	<b>Phase:</b>	PLAN	<b>Tie On Depth:</b>	0.00
<b>Vertical Section:</b>	<b>Depth From (TVD) (ft)</b>	<b>+N/-S (ft)</b>	<b>+E/-W (ft)</b>	<b>Direction (°)</b>
	0.00	0.00	0.00	303.97

<b>Plan Sections</b>										
Measured Depth (ft)	Inclination (°)	Azimuth (°)	Vertical Depth (ft)	+N/-S (ft)	+E/-W (ft)	Dogleg Rate (°/100ft)	Build Rate (°/100ft)	Turn Rate (°/100ft)	TFO (°)	Target
0.00	0.00	0.00	0.00	0.00	0.00	0.00	0.00	0.00	0.00	
1,150.00	0.00	0.00	1,150.00	0.00	0.00	0.00	0.00	0.00	0.00	
2,125.88	19.52	303.97	2,107.12	91.98	-136.52	2.00	2.00	0.00	303.97	
3,855.00	19.52	303.97	3,736.88	414.76	-615.63	0.00	0.00	0.00	0.00	
4,830.89	0.00	0.00	4,694.00	506.74	-752.15	2.00	-2.00	0.00	180.00	
5,130.89	0.00	0.00	4,994.00	506.74	-752.15	0.00	0.00	0.00	0.00	PBHL_Badding 10-

<b>Database:</b>	EDM 2003.16 Single User Db	<b>Local Co-ordinate Reference:</b>	Well P_Badding 10-26SX
<b>Company:</b>	US ROCKIES REGION PLANNING	<b>TVD Reference:</b>	WELL @ 5082.00ft (Original Well Elev)
<b>Project:</b>	COLORADO NORTHERN ZONE - 83	<b>MD Reference:</b>	WELL @ 5082.00ft (Original Well Elev)
<b>Site:</b>	WELD_BADDING 20-26 PAD	<b>North Reference:</b>	True
<b>Well:</b>	P_Badding 10-26SX	<b>Survey Calculation Method:</b>	Minimum Curvature
<b>Wellbore:</b>	P_Badding 10-26SX		
<b>Design:</b>	PLAN #1 7-22-10 RHS		

Planned Survey

Measured Depth (ft)	Inclination (°)	Azimuth (°)	Vertical Depth (ft)	+N/-S (ft)	+E/-W (ft)	Vertical Section (ft)	Dogleg Rate (°/100ft)	Build Rate (°/100ft)	Turn Rate (°/100ft)
0.00	0.00	0.00	0.00	0.00	0.00	0.00	0.00	0.00	0.00
100.00	0.00	0.00	100.00	0.00	0.00	0.00	0.00	0.00	0.00
200.00	0.00	0.00	200.00	0.00	0.00	0.00	0.00	0.00	0.00
300.00	0.00	0.00	300.00	0.00	0.00	0.00	0.00	0.00	0.00
400.00	0.00	0.00	400.00	0.00	0.00	0.00	0.00	0.00	0.00
500.00	0.00	0.00	500.00	0.00	0.00	0.00	0.00	0.00	0.00
600.00	0.00	0.00	600.00	0.00	0.00	0.00	0.00	0.00	0.00
700.00	0.00	0.00	700.00	0.00	0.00	0.00	0.00	0.00	0.00
800.00	0.00	0.00	800.00	0.00	0.00	0.00	0.00	0.00	0.00
900.00	0.00	0.00	900.00	0.00	0.00	0.00	0.00	0.00	0.00
1,000.00	0.00	0.00	1,000.00	0.00	0.00	0.00	0.00	0.00	0.00
1,050.00	0.00	0.00	1,050.00	0.00	0.00	0.00	0.00	0.00	0.00
<b>8 5/8"</b>									
1,100.00	0.00	0.00	1,100.00	0.00	0.00	0.00	0.00	0.00	0.00
1,150.00	0.00	0.00	1,150.00	0.00	0.00	0.00	0.00	0.00	0.00
<b>Start Build 2.00</b>									
1,200.00	1.00	303.97	1,200.00	0.24	-0.36	0.44	2.00	2.00	0.00
1,300.00	3.00	303.97	1,299.93	2.19	-3.26	3.93	2.00	2.00	0.00
1,400.00	5.00	303.97	1,399.68	6.09	-9.04	10.90	2.00	2.00	0.00
1,500.00	7.00	303.97	1,499.13	11.93	-17.71	21.35	2.00	2.00	0.00
1,600.00	9.00	303.97	1,598.15	19.71	-29.25	35.27	2.00	2.00	0.00
1,700.00	11.00	303.97	1,696.63	29.41	-43.65	52.63	2.00	2.00	0.00
1,800.00	13.00	303.97	1,794.44	41.03	-60.89	73.42	2.00	2.00	0.00
1,900.00	15.00	303.97	1,891.46	54.54	-80.96	97.62	2.00	2.00	0.00
2,000.00	17.00	303.97	1,987.58	69.94	-103.82	125.18	2.00	2.00	0.00
2,100.00	19.00	303.97	2,082.68	87.21	-129.44	156.08	2.00	2.00	0.00
2,125.88	19.52	303.97	2,107.12	91.98	-136.52	164.62	2.00	2.00	0.00
<b>Start 1729.12 hold at 2125.88 MD</b>									
2,200.00	19.52	303.97	2,176.98	105.81	-157.06	189.38	0.00	0.00	0.00
2,300.00	19.52	303.97	2,271.23	124.48	-184.77	222.79	0.00	0.00	0.00
2,400.00	19.52	303.97	2,365.48	143.15	-212.47	256.20	0.00	0.00	0.00
2,500.00	19.52	303.97	2,459.74	161.81	-240.18	289.61	0.00	0.00	0.00
2,600.00	19.52	303.97	2,553.99	180.48	-267.89	323.02	0.00	0.00	0.00
2,700.00	19.52	303.97	2,648.25	199.15	-295.60	356.43	0.00	0.00	0.00
2,800.00	19.52	303.97	2,742.50	217.82	-323.31	389.84	0.00	0.00	0.00
2,900.00	19.52	303.97	2,836.75	236.48	-351.02	423.25	0.00	0.00	0.00
3,000.00	19.52	303.97	2,931.01	255.15	-378.72	456.66	0.00	0.00	0.00
3,100.00	19.52	303.97	3,025.26	273.82	-406.43	490.07	0.00	0.00	0.00
3,200.00	19.52	303.97	3,119.51	292.49	-434.14	523.48	0.00	0.00	0.00
3,300.00	19.52	303.97	3,213.77	311.15	-461.85	556.88	0.00	0.00	0.00
3,400.00	19.52	303.97	3,308.02	329.82	-489.56	590.29	0.00	0.00	0.00
3,500.00	19.52	303.97	3,402.28	348.49	-517.26	623.70	0.00	0.00	0.00
3,600.00	19.52	303.97	3,496.53	367.16	-544.97	657.11	0.00	0.00	0.00
3,700.00	19.52	303.97	3,590.78	385.82	-572.68	690.52	0.00	0.00	0.00
3,800.00	19.52	303.97	3,685.04	404.49	-600.39	723.93	0.00	0.00	0.00
3,855.00	19.52	303.97	3,736.88	414.76	-615.63	742.31	0.00	0.00	0.00
<b>Start Drop -2.00</b>									
3,900.00	18.62	303.97	3,779.41	422.97	-627.82	757.01	2.00	-2.00	0.00
4,000.00	16.62	303.97	3,874.71	439.88	-652.92	787.28	2.00	-2.00	0.00
4,100.00	14.62	303.97	3,971.02	454.92	-675.25	814.20	2.00	-2.00	0.00
4,200.00	12.62	303.97	4,068.20	468.08	-694.77	837.74	2.00	-2.00	0.00
4,300.00	10.62	303.97	4,166.15	479.33	-711.47	857.88	2.00	-2.00	0.00
4,400.00	8.62	303.97	4,264.74	488.66	-725.33	874.58	2.00	-2.00	0.00

<b>Database:</b>	EDM 2003.16 Single User Db	<b>Local Co-ordinate Reference:</b>	Well P_Badding 10-26SX
<b>Company:</b>	US ROCKIES REGION PLANNING	<b>TVD Reference:</b>	WELL @ 5082.00ft (Original Well Elev)
<b>Project:</b>	COLORADO NORTHERN ZONE - 83	<b>MD Reference:</b>	WELL @ 5082.00ft (Original Well Elev)
<b>Site:</b>	WELD_BADDING 20-26 PAD	<b>North Reference:</b>	True
<b>Well:</b>	P_Badding 10-26SX	<b>Survey Calculation Method:</b>	Minimum Curvature
<b>Wellbore:</b>	P_Badding 10-26SX		
<b>Design:</b>	PLAN #1 7-22-10 RHS		

#### Planned Survey

Measured Depth (ft)	Inclination (°)	Azimuth (°)	Vertical Depth (ft)	+N/-S (ft)	+E/-W (ft)	Vertical Section (ft)	Dogleg Rate (°/100ft)	Build Rate (°/100ft)	Turn Rate (°/100ft)
4,411.39	8.39	303.97	4,276.00	489.61	-726.73	876.27	2.00	-2.00	0.00
<b>PARKMAN</b>									
4,500.00	6.62	303.97	4,363.85	496.07	-736.32	887.84	2.00	-2.00	0.00
4,600.00	4.62	303.97	4,463.36	501.54	-744.44	897.63	2.00	-2.00	0.00
4,700.00	2.62	303.97	4,563.16	505.07	-749.67	903.94	2.00	-2.00	0.00
4,800.00	0.62	303.97	4,663.11	506.64	-752.01	906.76	2.00	-2.00	0.00
4,830.89	0.00	0.00	4,694.00	506.74	-752.15	906.93	2.00	-2.00	181.41
<b>Start 300.00 hold at 4830.89 MD - SUSSEX</b>									
4,900.00	0.00	0.00	4,763.11	506.74	-752.15	906.93	0.00	0.00	0.00
5,000.00	0.00	0.00	4,863.11	506.74	-752.15	906.93	0.00	0.00	0.00
5,100.00	0.00	0.00	4,963.11	506.74	-752.15	906.93	0.00	0.00	0.00
5,130.89	0.00	0.00	4,994.00	506.74	-752.15	906.93	0.00	0.00	0.00
<b>PBHL_Badding 10-26SX(1830 FSL 2130 FEL)</b>									

#### Targets

##### Target Name

- hit/miss target	Dip Angle (°)	Dip Dir. (°)	TVD (ft)	+N/-S (ft)	+E/-W (ft)	Northing (ft)	Easting (ft)	Latitude	Longitude
- Shape									
PBHL_Badding 10-26	0.00	0.00	4,994.00	506.74	-752.15	1,282,746.83	3,211,879.54	40° 6' 25.373 N	104° 44' 33.014 W
- plan hits target center									
- Circle (radius 50.00)									

#### Casing Points

Measured Depth (ft)	Vertical Depth (ft)	Name	Casing Diameter (in)	Hole Diameter (in)
1,050.00	1,050.00	8 5/8"	8.620	11.000

#### Formations

Measured Depth (ft)	Vertical Depth (ft)	Name	Lithology	Dip (°)	Dip Direction (°)
4,830.89	4,694.00	SUSSEX			
4,411.39	4,276.00	PARKMAN			

#### Plan Annotations

Measured Depth (ft)	Vertical Depth (ft)	Local Coordinates		Comment
		+N/-S (ft)	+E/-W (ft)	
1,150.00	1,150.00	0.00	0.00	Start Build 2.00
2,125.88	2,107.12	91.98	-136.52	Start 1729.12 hold at 2125.88 MD
3,855.00	3,736.88	414.76	-615.63	Start Drop -2.00
4,830.89	4,694.00	506.74	-752.15	Start 300.00 hold at 4830.89 MD
5,130.89	4,994.00	506.74	-752.15	TD at 5130.89