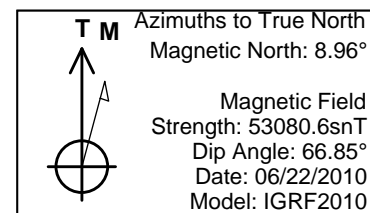
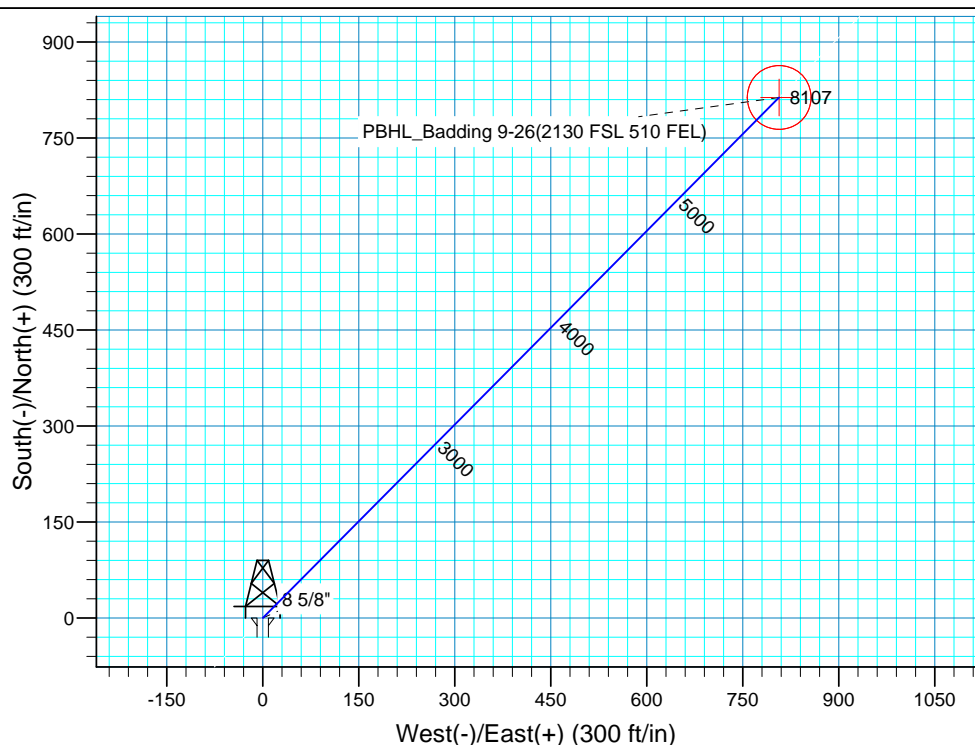
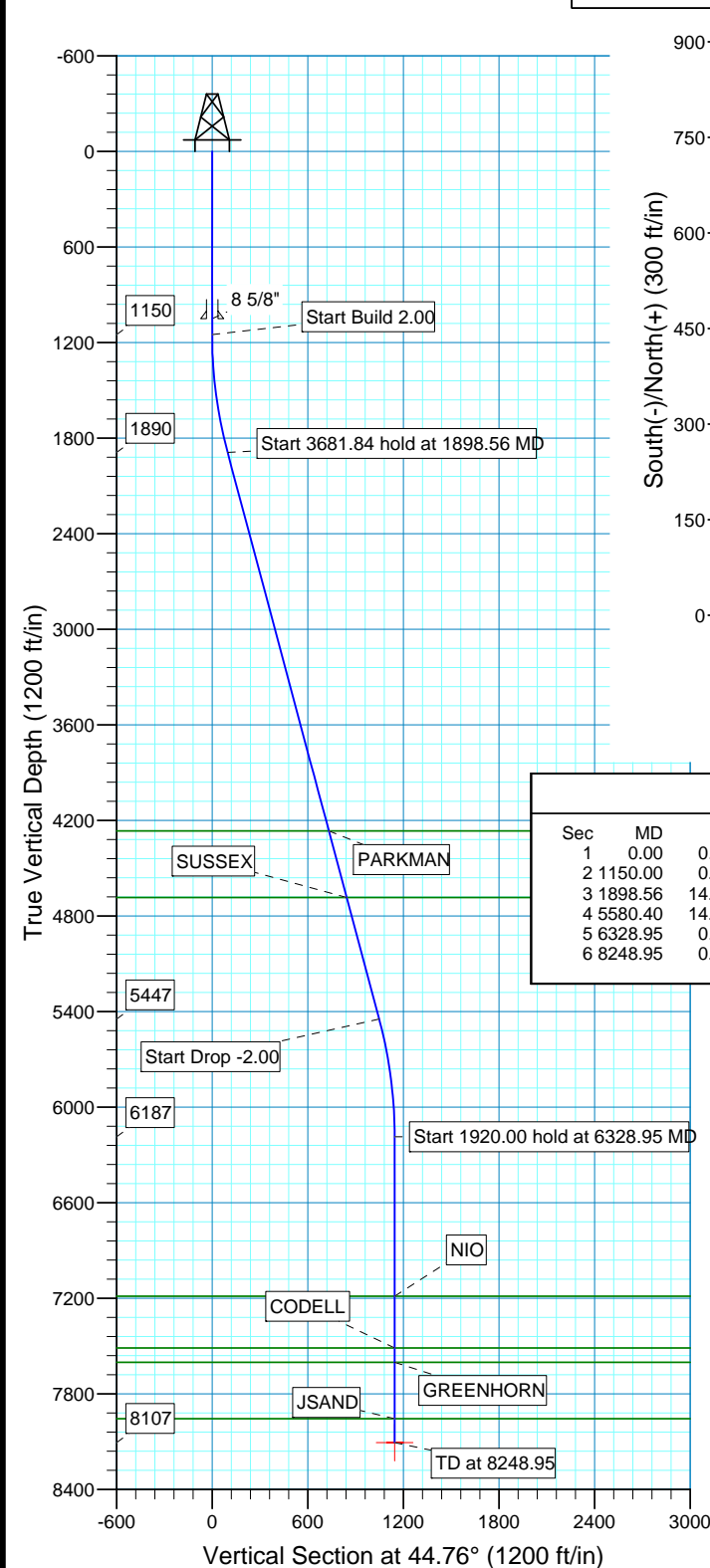


WELL DETAILS: P_Badding 9-26					
WELL @ 5082.00ft (Original Well Elev) 5067.00					
+N/-S	+E/-W	Northing	Easting	Latitude	Longitude
0.00	0.00	1282247.45	3212695.86	40° 6' 20.369 N	104° 44' 22.564 W



WELLBORE TARGET DETAILS (MAP CO-ORDINATES AND LAT/LONG)								
Name	TVD	+N/-S	+E/-W	Northing	Easting	Latitude	Longitude	Shape
PBHL	8107.00	813.45	806.69	1283067.79	3213495.54	40° 6' 28.408 N	104° 44' 12.181 W	Circle (Radius: 50.00)



SECTION DETAILS										
Sec	MD	Inc	Azi	TVD	+N/-S	+E/-W	DLeg	TFace	VSec	Target
1	0.00	0.00	0.00	0.00	0.00	0.00	0.00	0.00	0.00	
2	1150.00	0.00	0.00	1150.00	0.00	0.00	0.00	0.00	0.00	
3	1898.56	14.97	44.76	1890.07	69.05	68.47	2.00	44.76	97.24	
4	5580.40	14.97	44.76	5446.93	744.41	738.21	0.00	0.00	1048.38	
5	6328.95	0.00	0.00	6187.00	813.46	806.69	2.00	180.00	1145.62	
6	8248.95	0.00	0.00	8107.00	813.46	806.69	0.00	0.00	1145.62	PBHL_Badding 9-26(2130 FSL 510 FEL)

FORMATION TOP DETAILS		
TVDPath	MDPath	Formation
4266.00	4357.97	PARKMAN
4684.00	4790.66	SUSSEX
7187.00	7328.95	NIO
7512.00	7653.95	CODELL
7602.00	7743.95	GREENHORN
7957.00	8098.95	JSAND

PROJECT DETAILS: COLORADO NORTHERN ZONE - 83	
Geodetic System:	US State Plane 1983
Datum:	North American Datum 1983
Ellipsoid:	GRS 1980
Zone:	Colorado Northern Zone
Location:	SECTION 26 T2N R66W
System Datum:	Mean Sea Level
Local North:	True

# **US ROCKIES REGION PLANNING**

**COLORADO NORTHERN ZONE - 83**

**WELD\_BADDING 20-26 PAD**

**P\_Badding 9-26**

**P\_Badding 9-26**

**Plan: PLAN #1 7-22-10 RHS**

## **Standard Planning Report**

**22 July, 2010**

<b>Database:</b>	EDM 2003.16 Single User Db	<b>Local Co-ordinate Reference:</b>	Well P_Badding 9-26
<b>Company:</b>	US ROCKIES REGION PLANNING	<b>TVD Reference:</b>	WELL @ 5082.00ft (Original Well Elev)
<b>Project:</b>	COLORADO NORTHERN ZONE - 83	<b>MD Reference:</b>	WELL @ 5082.00ft (Original Well Elev)
<b>Site:</b>	WELD_BADDING 20-26 PAD	<b>North Reference:</b>	True
<b>Well:</b>	P_Badding 9-26	<b>Survey Calculation Method:</b>	Minimum Curvature
<b>Wellbore:</b>	P_Badding 9-26		
<b>Design:</b>	PLAN #1 7-22-10 RHS		

<b>Project</b>	COLORADO NORTHERN ZONE - 83, KERR MCGEE OIL & GAS ONSHORE LP		
<b>Map System:</b>	US State Plane 1983	<b>System Datum:</b>	Mean Sea Level
<b>Geo Datum:</b>	North American Datum 1983		
<b>Map Zone:</b>	Colorado Northern Zone		

Site		WELD_BADDING 20-26 PAD, SECTION 26 T2N R66W			
Site Position:		Northing:	1,282,246.75 ft	Latitude:	40° 6' 20.365 N
From:	Lat/Long	Easting:	3,212,655.87 ft	Longitude:	104° 44' 23.078 W
Position Uncertainty:	0.00 ft	Slot Radius:	in	Grid Convergence:	0.49 °

Well	P_Badding 9-26					
Well Position	+N-S	0.00 ft	Northing:	1,282,247.45 ft	Latitude:	40° 6' 20.369 N
	+E-W	0.00 ft	Easting:	3,212,695.86 ft	Longitude:	104° 44' 22.564 W
Position Uncertainty		0.00 ft	Wellhead Elevation:	ft	Ground Level:	5,067.00 ft

<b>Wellbore</b>	P_Badding 9-26				
<b>Magnetics</b>	<b>Model Name</b>	<b>Sample Date</b>	<b>Declination (°)</b>	<b>Dip Angle (°)</b>	<b>Field Strength (nT)</b>
	IGRF2010	06/22/2010	8.96	66.85	53,081

<b>Design</b>	PLAN #1 7-22-10 RHS				
<b>Audit Notes:</b>					
<b>Version:</b>	<b>Phase:</b>	PLAN	<b>Tie On Depth:</b>	0.00	
<b>Vertical Section:</b>	<b>Depth From (TVD) (ft)</b>	<b>+N/-S (ft)</b>	<b>+E/-W (ft)</b>	<b>Direction (°)</b>	
	0.00	0.00	0.00	44.76	

<b>Plan Sections</b>										
Measured Depth (ft)	Inclination (°)	Azimuth (°)	Vertical Depth (ft)	+N/-S (ft)	+E/-W (ft)	Dogleg Rate (°/100ft)	Build Rate (°/100ft)	Turn Rate (°/100ft)	TFO (°)	Target
0.00	0.00	0.00	0.00	0.00	0.00	0.00	0.00	0.00	0.00	
1,150.00	0.00	0.00	1,150.00	0.00	0.00	0.00	0.00	0.00	0.00	
1,898.56	14.97	44.76	1,890.07	69.05	68.47	2.00	2.00	0.00	44.76	
5,580.40	14.97	44.76	5,446.93	744.41	738.21	0.00	0.00	0.00	0.00	
6,328.95	0.00	0.00	6,187.00	813.46	806.69	2.00	-2.00	0.00	180.00	
8,248.95	0.00	0.00	8,107.00	813.46	806.69	0.00	0.00	0.00	0.00	PBHL_Badding 9-2

<b>Database:</b>	EDM 2003.16 Single User Db	<b>Local Co-ordinate Reference:</b>	Well P_Badding 9-26
<b>Company:</b>	US ROCKIES REGION PLANNING	<b>TVD Reference:</b>	WELL @ 5082.00ft (Original Well Elev)
<b>Project:</b>	COLORADO NORTHERN ZONE - 83	<b>MD Reference:</b>	WELL @ 5082.00ft (Original Well Elev)
<b>Site:</b>	WELD_BADDING 20-26 PAD	<b>North Reference:</b>	True
<b>Well:</b>	P_Badding 9-26	<b>Survey Calculation Method:</b>	Minimum Curvature
<b>Wellbore:</b>	P_Badding 9-26		
<b>Design:</b>	PLAN #1 7-22-10 RHS		

**Planned Survey**

Measured Depth (ft)	Inclination (°)	Azimuth (°)	Vertical Depth (ft)	+N/-S (ft)	+E/-W (ft)	Vertical Section (ft)	Dogleg Rate (°/100ft)	Build Rate (°/100ft)	Turn Rate (°/100ft)
0.00	0.00	0.00	0.00	0.00	0.00	0.00	0.00	0.00	0.00
100.00	0.00	0.00	100.00	0.00	0.00	0.00	0.00	0.00	0.00
200.00	0.00	0.00	200.00	0.00	0.00	0.00	0.00	0.00	0.00
300.00	0.00	0.00	300.00	0.00	0.00	0.00	0.00	0.00	0.00
400.00	0.00	0.00	400.00	0.00	0.00	0.00	0.00	0.00	0.00
500.00	0.00	0.00	500.00	0.00	0.00	0.00	0.00	0.00	0.00
600.00	0.00	0.00	600.00	0.00	0.00	0.00	0.00	0.00	0.00
700.00	0.00	0.00	700.00	0.00	0.00	0.00	0.00	0.00	0.00
800.00	0.00	0.00	800.00	0.00	0.00	0.00	0.00	0.00	0.00
900.00	0.00	0.00	900.00	0.00	0.00	0.00	0.00	0.00	0.00
1,000.00	0.00	0.00	1,000.00	0.00	0.00	0.00	0.00	0.00	0.00
1,050.00	0.00	0.00	1,050.00	0.00	0.00	0.00	0.00	0.00	0.00
<b>8 5/8"</b>									
1,100.00	0.00	0.00	1,100.00	0.00	0.00	0.00	0.00	0.00	0.00
1,150.00	0.00	0.00	1,150.00	0.00	0.00	0.00	0.00	0.00	0.00
<b>Start Build 2.00</b>									
1,200.00	1.00	44.76	1,200.00	0.31	0.31	0.44	2.00	2.00	0.00
1,300.00	3.00	44.76	1,299.93	2.79	2.76	3.93	2.00	2.00	0.00
1,400.00	5.00	44.76	1,399.68	7.74	7.68	10.90	2.00	2.00	0.00
1,500.00	7.00	44.76	1,499.13	15.16	15.04	21.35	2.00	2.00	0.00
1,600.00	9.00	44.76	1,598.15	25.04	24.84	35.27	2.00	2.00	0.00
1,700.00	11.00	44.76	1,696.63	37.37	37.06	52.63	2.00	2.00	0.00
1,800.00	13.00	44.76	1,794.44	52.14	51.70	73.42	2.00	2.00	0.00
1,898.56	14.97	44.76	1,890.07	69.05	68.47	97.24	2.00	2.00	0.00
<b>Start 3681.84 hold at 1898.56 MD</b>									
1,900.00	14.97	44.76	1,891.46	69.31	68.74	97.61	0.00	0.00	0.00
2,000.00	14.97	44.76	1,988.07	87.66	86.93	123.45	0.00	0.00	0.00
2,100.00	14.97	44.76	2,084.67	106.00	105.12	149.28	0.00	0.00	0.00
2,200.00	14.97	44.76	2,181.28	124.34	123.31	175.11	0.00	0.00	0.00
2,300.00	14.97	44.76	2,277.88	142.68	141.50	200.95	0.00	0.00	0.00
2,400.00	14.97	44.76	2,374.49	161.03	159.69	226.78	0.00	0.00	0.00
2,500.00	14.97	44.76	2,471.10	179.37	177.88	252.61	0.00	0.00	0.00
2,600.00	14.97	44.76	2,567.70	197.71	196.07	278.45	0.00	0.00	0.00
2,700.00	14.97	44.76	2,664.31	216.06	214.26	304.28	0.00	0.00	0.00
2,800.00	14.97	44.76	2,760.91	234.40	232.45	330.11	0.00	0.00	0.00
2,900.00	14.97	44.76	2,857.52	252.74	250.64	355.95	0.00	0.00	0.00
3,000.00	14.97	44.76	2,954.12	271.09	268.83	381.78	0.00	0.00	0.00
3,100.00	14.97	44.76	3,050.73	289.43	287.02	407.61	0.00	0.00	0.00
3,200.00	14.97	44.76	3,147.33	307.77	305.21	433.45	0.00	0.00	0.00
3,300.00	14.97	44.76	3,243.94	326.11	323.40	459.28	0.00	0.00	0.00
3,400.00	14.97	44.76	3,340.55	344.46	341.59	485.11	0.00	0.00	0.00
3,500.00	14.97	44.76	3,437.15	362.80	359.78	510.95	0.00	0.00	0.00
3,600.00	14.97	44.76	3,533.76	381.14	377.97	536.78	0.00	0.00	0.00
3,700.00	14.97	44.76	3,630.36	399.49	396.16	562.61	0.00	0.00	0.00
3,800.00	14.97	44.76	3,726.97	417.83	414.35	588.45	0.00	0.00	0.00
3,900.00	14.97	44.76	3,823.57	436.17	432.54	614.28	0.00	0.00	0.00
4,000.00	14.97	44.76	3,920.18	454.52	450.73	640.11	0.00	0.00	0.00
4,100.00	14.97	44.76	4,016.79	472.86	468.92	665.95	0.00	0.00	0.00
4,200.00	14.97	44.76	4,113.39	491.20	487.11	691.78	0.00	0.00	0.00
4,300.00	14.97	44.76	4,210.00	509.55	505.30	717.61	0.00	0.00	0.00
4,357.97	14.97	44.76	4,266.00	520.18	515.85	732.59	0.00	0.00	0.00
<b>PARKMAN</b>									
4,400.00	14.97	44.76	4,306.60	527.89	523.49	743.45	0.00	0.00	0.00

<b>Database:</b>	EDM 2003.16 Single User Db	<b>Local Co-ordinate Reference:</b>	Well P_Badding 9-26
<b>Company:</b>	US ROCKIES REGION PLANNING	<b>TVD Reference:</b>	WELL @ 5082.00ft (Original Well Elev)
<b>Project:</b>	COLORADO NORTHERN ZONE - 83	<b>MD Reference:</b>	WELL @ 5082.00ft (Original Well Elev)
<b>Site:</b>	WELD_BADDING 20-26 PAD	<b>North Reference:</b>	True
<b>Well:</b>	P_Badding 9-26	<b>Survey Calculation Method:</b>	Minimum Curvature
<b>Wellbore:</b>	P_Badding 9-26		
<b>Design:</b>	PLAN #1 7-22-10 RHS		

Planned Survey

Measured Depth (ft)	Inclination (°)	Azimuth (°)	Vertical Depth (ft)	+N/-S (ft)	+E/-W (ft)	Vertical Section (ft)	Dogleg Rate (°/100ft)	Build Rate (°/100ft)	Turn Rate (°/100ft)
4,500.00	14.97	44.76	4,403.21	546.23	541.69	769.28	0.00	0.00	0.00
4,600.00	14.97	44.76	4,499.81	564.57	559.88	795.11	0.00	0.00	0.00
4,700.00	14.97	44.76	4,596.42	582.92	578.07	820.95	0.00	0.00	0.00
4,790.66	14.97	44.76	4,684.00	599.55	594.56	844.37	0.00	0.00	0.00
<b>SUSSEX</b>									
4,800.00	14.97	44.76	4,693.02	601.26	596.26	846.78	0.00	0.00	0.00
4,900.00	14.97	44.76	4,789.63	619.60	614.45	872.61	0.00	0.00	0.00
5,000.00	14.97	44.76	4,886.24	637.95	632.64	898.45	0.00	0.00	0.00
5,100.00	14.97	44.76	4,982.84	656.29	650.83	924.28	0.00	0.00	0.00
5,200.00	14.97	44.76	5,079.45	674.63	669.02	950.11	0.00	0.00	0.00
5,300.00	14.97	44.76	5,176.05	692.98	687.21	975.95	0.00	0.00	0.00
5,400.00	14.97	44.76	5,272.66	711.32	705.40	1,001.78	0.00	0.00	0.00
5,500.00	14.97	44.76	5,369.26	729.66	723.59	1,027.61	0.00	0.00	0.00
5,580.40	14.97	44.76	5,446.93	744.41	738.21	1,048.38	0.00	0.00	0.00
<b>Start Drop -2.00</b>									
5,600.00	14.58	44.76	5,465.89	747.96	741.73	1,053.38	2.00	-2.00	0.00
5,700.00	12.58	44.76	5,563.09	764.63	758.27	1,076.86	2.00	-2.00	0.00
5,800.00	10.58	44.76	5,661.05	778.88	772.40	1,096.93	2.00	-2.00	0.00
5,900.00	8.58	44.76	5,759.65	790.70	784.12	1,113.57	2.00	-2.00	0.00
6,000.00	6.58	44.76	5,858.77	800.06	793.40	1,126.76	2.00	-2.00	0.00
6,100.00	4.58	44.76	5,958.29	806.96	800.25	1,136.48	2.00	-2.00	0.00
6,200.00	2.58	44.76	6,058.09	811.40	804.64	1,142.72	2.00	-2.00	0.00
6,300.00	0.58	44.76	6,158.05	813.35	806.58	1,145.48	2.00	-2.00	0.00
6,328.95	0.00	0.00	6,187.00	813.46	806.69	1,145.62	2.00	-2.00	-154.59
<b>Start 1920.00 hold at 6328.95 MD</b>									
6,400.00	0.00	0.00	6,258.05	813.46	806.69	1,145.62	0.00	0.00	0.00
6,500.00	0.00	0.00	6,358.05	813.46	806.69	1,145.62	0.00	0.00	0.00
6,600.00	0.00	0.00	6,458.05	813.46	806.69	1,145.62	0.00	0.00	0.00
6,700.00	0.00	0.00	6,558.05	813.46	806.69	1,145.62	0.00	0.00	0.00
6,800.00	0.00	0.00	6,658.05	813.46	806.69	1,145.62	0.00	0.00	0.00
6,900.00	0.00	0.00	6,758.05	813.46	806.69	1,145.62	0.00	0.00	0.00
7,000.00	0.00	0.00	6,858.05	813.46	806.69	1,145.62	0.00	0.00	0.00
7,100.00	0.00	0.00	6,958.05	813.46	806.69	1,145.62	0.00	0.00	0.00
7,200.00	0.00	0.00	7,058.05	813.46	806.69	1,145.62	0.00	0.00	0.00
7,300.00	0.00	0.00	7,158.05	813.46	806.69	1,145.62	0.00	0.00	0.00
7,328.95	0.00	0.00	7,187.00	813.46	806.69	1,145.62	0.00	0.00	0.00
<b>NIO</b>									
7,400.00	0.00	0.00	7,258.05	813.46	806.69	1,145.62	0.00	0.00	0.00
7,500.00	0.00	0.00	7,358.05	813.46	806.69	1,145.62	0.00	0.00	0.00
7,600.00	0.00	0.00	7,458.05	813.46	806.69	1,145.62	0.00	0.00	0.00
7,653.95	0.00	0.00	7,512.00	813.46	806.69	1,145.62	0.00	0.00	0.00
<b>CODELL</b>									
7,700.00	0.00	0.00	7,558.05	813.46	806.69	1,145.62	0.00	0.00	0.00
7,743.95	0.00	0.00	7,602.00	813.46	806.69	1,145.62	0.00	0.00	0.00
<b>GREENHORN</b>									
7,800.00	0.00	0.00	7,658.05	813.46	806.69	1,145.62	0.00	0.00	0.00
7,900.00	0.00	0.00	7,758.05	813.46	806.69	1,145.62	0.00	0.00	0.00
8,000.00	0.00	0.00	7,858.05	813.46	806.69	1,145.62	0.00	0.00	0.00
8,098.95	0.00	0.00	7,957.00	813.46	806.69	1,145.62	0.00	0.00	0.00
<b>JSAND</b>									
8,100.00	0.00	0.00	7,958.05	813.46	806.69	1,145.62	0.00	0.00	0.00
8,200.00	0.00	0.00	8,058.05	813.46	806.69	1,145.62	0.00	0.00	0.00
8,248.95	0.00	0.00	8,107.00	813.46	806.69	1,145.62	0.00	0.00	0.00

<b>Database:</b>	EDM 2003.16 Single User Db	<b>Local Co-ordinate Reference:</b>	Well P_Badding 9-26
<b>Company:</b>	US ROCKIES REGION PLANNING	<b>TVD Reference:</b>	WELL @ 5082.00ft (Original Well Elev)
<b>Project:</b>	COLORADO NORTHERN ZONE - 83	<b>MD Reference:</b>	WELL @ 5082.00ft (Original Well Elev)
<b>Site:</b>	WELD_BADDING 20-26 PAD	<b>North Reference:</b>	True
<b>Well:</b>	P_Badding 9-26	<b>Survey Calculation Method:</b>	Minimum Curvature
<b>Wellbore:</b>	P_Badding 9-26		
<b>Design:</b>	PLAN #1 7-22-10 RHS		

Planned Survey									
Measured Depth (ft)	Inclination (°)	Azimuth (°)	Vertical Depth (ft)	+N/-S (ft)	+E/-W (ft)	Vertical Section (ft)	Dogleg Rate (°/100ft)	Build Rate (°/100ft)	Turn Rate (°/100ft)
PBHL_Badding 9-26(2130 FSL 510 FEL)									

Targets									
Target Name	- hit/miss target	Dip Angle (°)	Dip Dir. (°)	TVD (ft)	+N/-S (ft)	+E/-W (ft)	Northing (ft)	Easting (ft)	Latitude Longitude
PBHL_Badding 9-26(2130 FSL 510 FEL)	- plan hits target center - Circle (radius 50.00)	0.00	0.00	8,107.00	813.45	806.69	1,283,067.79	3,213,495.54	40° 6' 28.408 N 104° 44' 12.181 W

Casing Points					
Measured Depth (ft)	Vertical Depth (ft)	Name	Casing Diameter (in)	Hole Diameter (in)	
1,050.00	1,050.00	8 5/8"	8.620	11.000	

Formations					
Measured Depth (ft)	Vertical Depth (ft)	Name	Lithology	Dip (°)	Dip Direction (°)
7,743.95	7,602.00	GREENHORN			
8,098.95	7,957.00	JSAND			
4,790.66	4,684.00	SUSSEX			
7,328.95	7,187.00	NIO			
4,357.97	4,266.00	PARKMAN			
7,653.95	7,512.00	CODELL			

Plan Annotations				
Measured Depth (ft)	Vertical Depth (ft)	Local Coordinates +N/-S (ft)	+E/-W (ft)	Comment
1,150.00	1,150.00	0.00	0.00	Start Build 2.00
1,898.56	1,890.07	69.05	68.47	Start 3681.84 hold at 1898.56 MD
5,580.40	5,446.93	744.41	738.21	Start Drop -2.00
6,328.95	6,187.00	813.46	806.69	Start 1920.00 hold at 6328.95 MD
8,248.95	8,107.00	813.46	806.69	TD at 8248.95