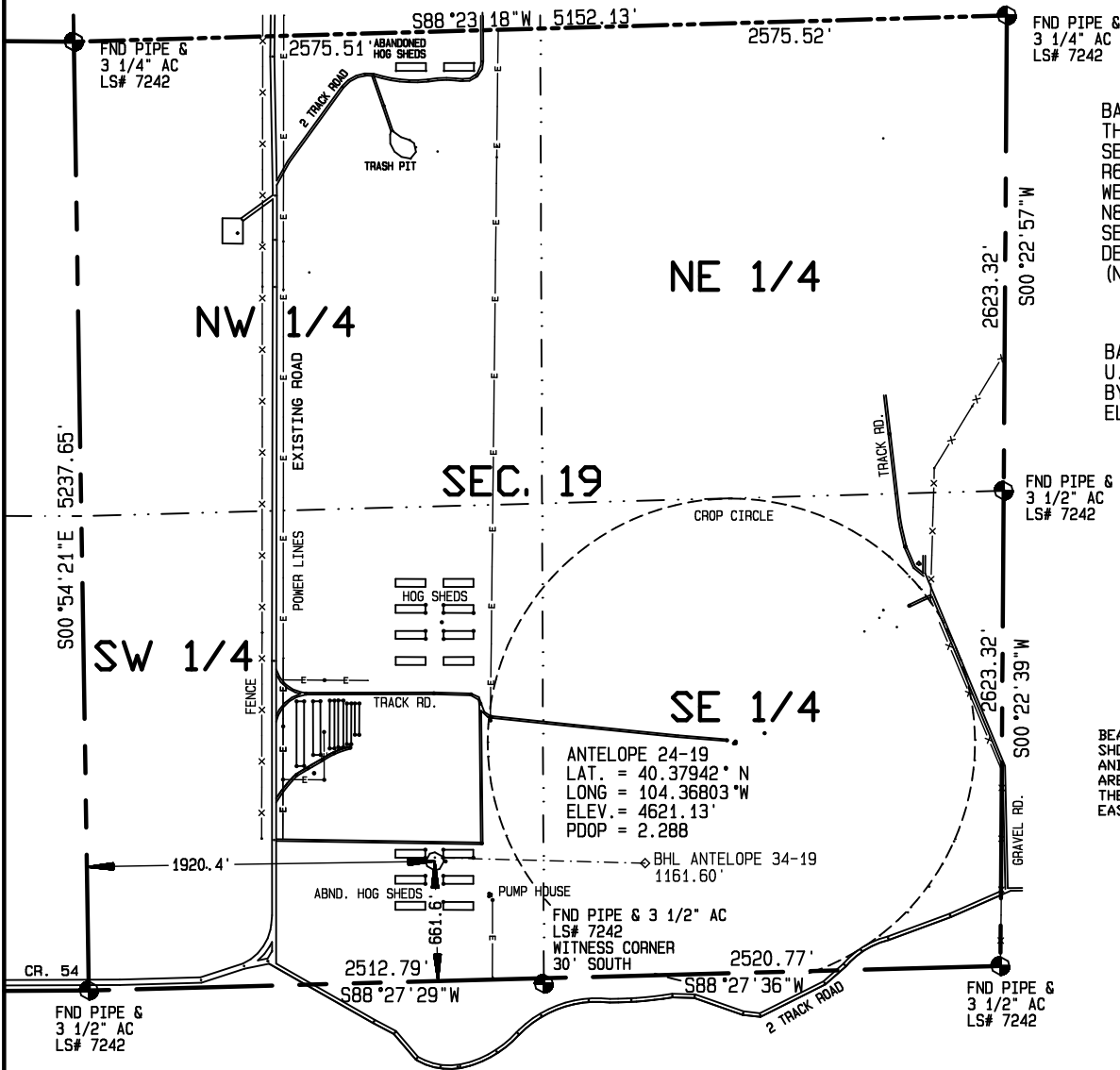


SURFACE HOLE LOCATIONS						BOTTOM HOLE LOCATIONS				
WELL	LAT.	LONG.	EL.	FSL	FWL	WELL	LAT.	LONG.	N/S	E/W
24-19	40.37942°	104.36803°	4621.13'	661.6'	1920.4	24-19	40.37942°	104.36803°	661.6' FSL	1920.4' FWL
34-19	40.37947°	104.36803°	4621.13'	681.7'	1920.8'	34-19	40.37938°	104.36373°	619.7' FSL	1964.9' FWL

Visible improvements within 400 feet of the location include: Abandoned hog shed foundations, closest are 51' NE & 55' NW, Overhead power lines 384' SE, A pump house is 349' SE and a track road 98' North.



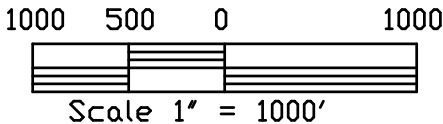
BASIS OF BEARINGS IS THE NORTH LINE SEC. 19, T5N, R62W OF THE 6TH P.M. WELD COUNTY, CO. BEARS N88°23'18"E BETWEEN SET MONUMENTS AS DETERMINED BY GPS (NAD 83)

BASIS OF ELEVATION IS U.S.G.S. POINT F 414 BY DIFFERENTIAL GPS EL. = 4611.18'

BEARINGS AND DISTANCES SHOWN ARE FIELD MEASURED AND THE LOCATION DISTANCES ARE AT RIGHT ANGLES FROM THE NEAREST NORTH-SOUTH AND EAST-WEST SECTION LINES.



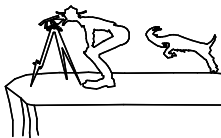
I HEREBY CERTIFY THAT THIS PLAT IS AN ACCURATE REPRESENTATION OF A CORRECT SURVEY SHOWING THE LOCATION OF SAID WELLSITE:



Dan Griggs PLS# 38018

CONTRACT SURVEYORS, LTD.
COMPLETE SURVEYING AND GLOBAL POSITIONING

2133 SOUTH BELLAIRE STREET #14
DENVER COLORADO 80222
(303) 756-3695



DATE OF FIELD WORK:

JULY 28, 2010

DATE OF DRAWING:

AUGUST 2, 2010

ANTELOPE 24-19 PAD SITE

SE 1/4 SW 1/4 SEC. 19, T5N, R62W

BONANAZA CREEK ENERGY OPERATING COMPANY, LLC

WELD COUNTY, COLORADO

CSL# 10104-47