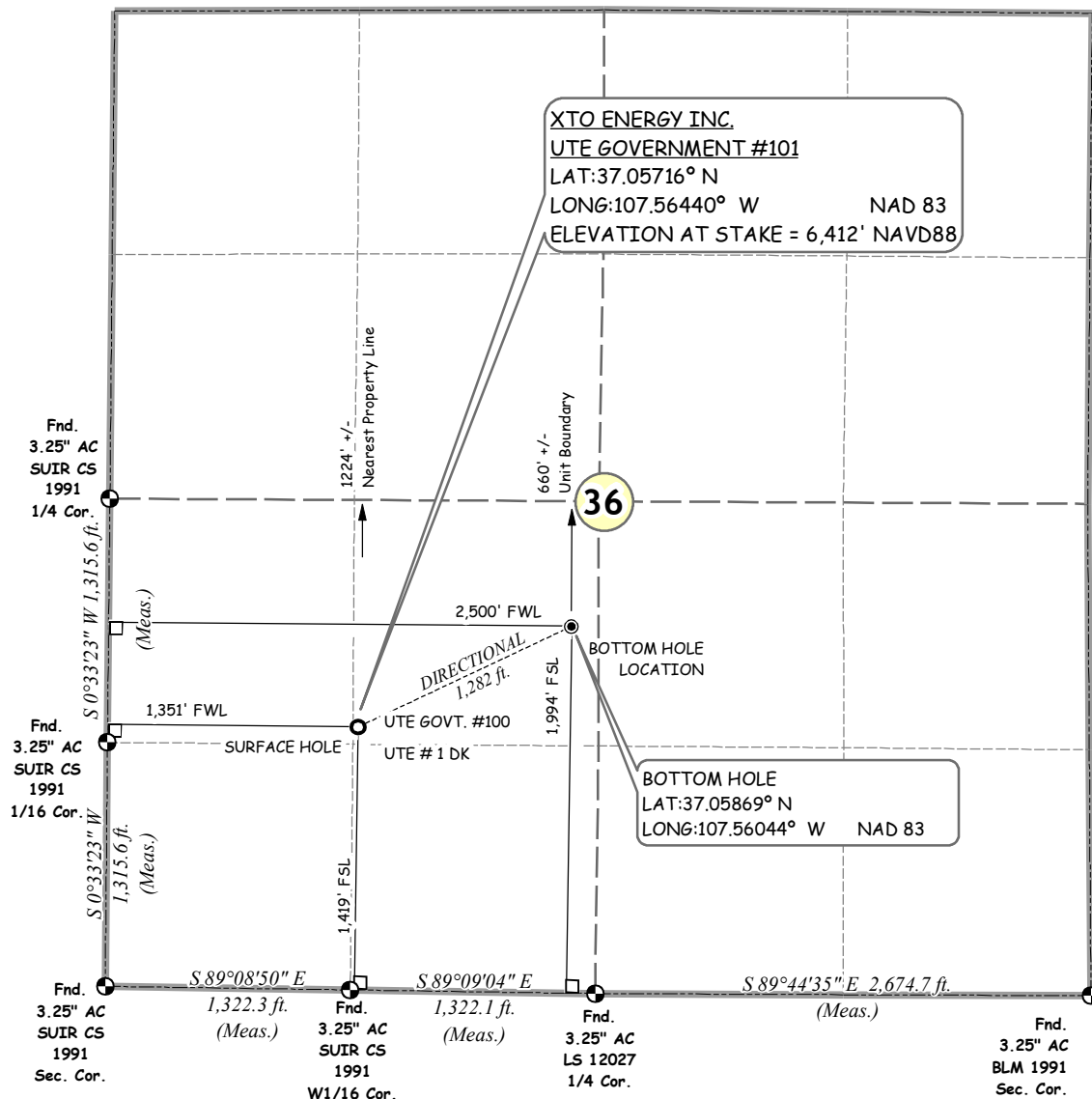


**XTO ENERGY INC.
UTE GOVERNMENT #101**

**SURFACE HOLE 1,419' FSL, 1,351' FWL
BOTTOM HOLE LOCATION 1,994 FSL, 2,500' FWL
SECTION 36, T-33-N, R-07-W, N.M.P.M.,
LA PLATA COUNTY, COLORADO
LAT:37.05716° N LONG:107.56440° W NAD 83
ELEVATION AT STAKE = 6,412' NAVD88**

Legend

- BOTTOM HOLE
- SURFACE LOCATION
- ⊕ FOUND MON.
- DIRECTIONAL
- FOOTAGE
- QUARTER
- ===== SECTION
- SIXTEENTH



NOTES:

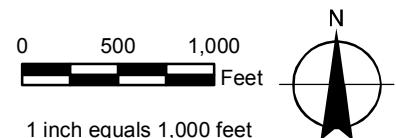
1. SURFACE USE IS EXISTING WELL LOCATION AND AGRICULTURAL.
2. SEE ATTACHED ADDENDUM FOR IMPROVEMENTS, AND PROPERTY LINES WITHIN 200' OF BORE.
3. DATE OF SURVEY 1/2/07-3/27/07
4. BASIS OF ELEVATION = NAVD88 AS PREDICTED BY GEOID03.
5. GPS POSITIONS COLLECTED AT PDOP VALUE OF 6 OR LESS.
6. LOCATION OFFSETS TO SECTION LINE MEASURED AT 90° TO SECTION LINE.

BASIS OF BEARING = BETWEEN MONUMENTS FOUND AT THE SOUTH SIXTEENTH CORNER ON THE WEST LINE AND THE SOUTH WEST CORNER OF SECTION 36, T-33-N, R-07-W, N.M.P.M., LA PLATA COUNTY, COLORADO, LINE BEARS S0°33'23\"W BY GPS MEASUREMENT.

**NAD 27 Surface Location
LAT:37.05716° N
LONG:107.56379° W**

THIS IS TO CERTIFY THAT THE ABOVE PLAT WAS PREPARED FROM FIELD NOTES OF ACTUAL SURVEYS MADE BY ME OR UNDER MY DIRECT SUPERVISION AND THAT SAME ARE TRUE AND CORRECT TO THE BEST OF MY KNOWLEDGE AND BELIEF

DAVID ALEXANDER JOHNSON LICENSE NO. 33648 DATE
STATE OF COLORADO



7/14/10 XTO016 SECTION DIAGRAM.MXD

