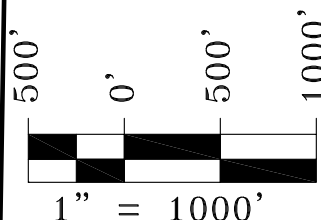
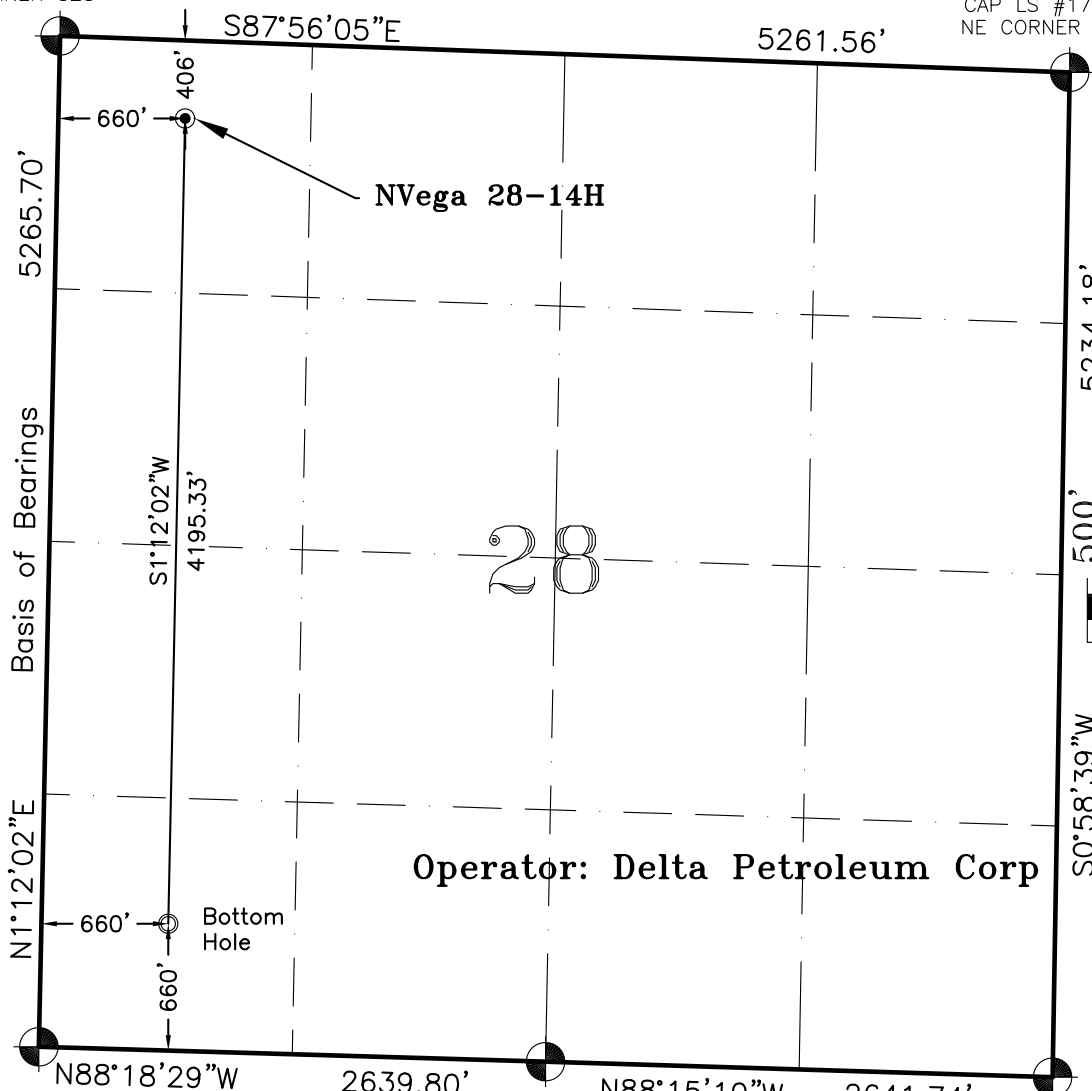


T9S, R93W, 6th P.M.

FOUND ORIGINAL
STONE MONUMENT
NW CORNER S28

FOUND ALUMINUM
CAP LS #17492
NE CORNER S28



Operator: Delta Petroleum Corp

FOUND 1990 BLM
ALUMINUM CAP SW
CORNER S28

FOUND 1990
BLM ALUMINUM
CAP S 1/4
CORNER S28

FOUND 1990
BLM ALUMINUM
CAP SE
CORNER S28

NOTES:

1. GEODETIC POSITIONS ARE SHOWN IN DECIMAL DEGREES.
2. UNITS OF LINEAR MEASUREMENT: U.S. SURVEY FOOT
3. ELEVATIONS ARE BASED ON GPS OBSERVATIONS USING GEOID 03, NAVD88.
4. ALL SURFACE (SHL) AND BOTTOM (BHL) HOLE LOCATIONS ARE MEASURED AT 90° ANGLES FROM SECTION LINES.
5. BASIS OF BEARING: N01°12'02"E BETWEEN FOUND MONUMENTS AS SHOWN HEREON.
6. EXISTING GROUND ELEVATION: 7511'. PROPOSED PAD ELEVATION: 7513.80'.
7. GPS OPERATOR: KYLE TESKY OBSERVED AN AVERAGE PDOP OF ≤ 3.0 FOR ALL SURVEY MEASUREMENTS DEPICTED ON THIS AND SUBSEQUENT SHEETS. ALL GPS OBSERVATIONS ARE IN COMPLIANCE WITH COGCC RULE NO. 215
8. SURFACE USE: RANGELAND
9. USGS QUAD MAP: VEGA RESERVOIR

SURVEYORS STATEMENT:

I, ELWOOD BARRY GILES, BEING A REGISTERED LAND SURVEYOR IN THE STATE OF COLORADO, DO HERBY CERTIFY THAT THIS PLAT REPRESENTS A SURVEY PERFORMED BY ME OR UNDER MY DIRECT SUPERVISION AUGUST 25, 2010 AND IS TRUE TO THE BEST OF MY KNOWLEDGE AND BELIEF.

Elwood Barry Giles

1 SEPT, 2010

ELWOOD BARRY GILES
COLORADO LS 38150

DATE

WELL No.	SECTION LINES TIES		NAD 83		NAD 27	
NVEGA 28-14H	FOOTAGES	FOOTAGES	LATITUDE	LONGITUDE	LATITUDE	LONGITUDE
SURFACE HOLE	406' FNL	660' FWL	39.254245°	107.781475°	39.254265°	107.780858°
BOTTOM HOLE	660' FSL	660' FWL	39.242731°	107.781413°	39.242751°	107.780796°



SGM INC.

118 W. 6th Street, Suite 200
Glenwood Springs, Colorado 81601
(970) 945-1004 (FAX 945-5948)
Meeker, Colorado (970) 878-5180

Scale: 1"=1000'

Sheet No. 1 of 8

NVega 28-14H

Well Location Plat for Delta Petroleum Well NVega 28-14H

NW 1/4 NW 1/4 Sect.28, T. 9 S., R. 93 W., 6th P.M., Mesa County, CO

Job# 2010-349.001

Date: 9.1.2010

By: reb

File: 9C_BM