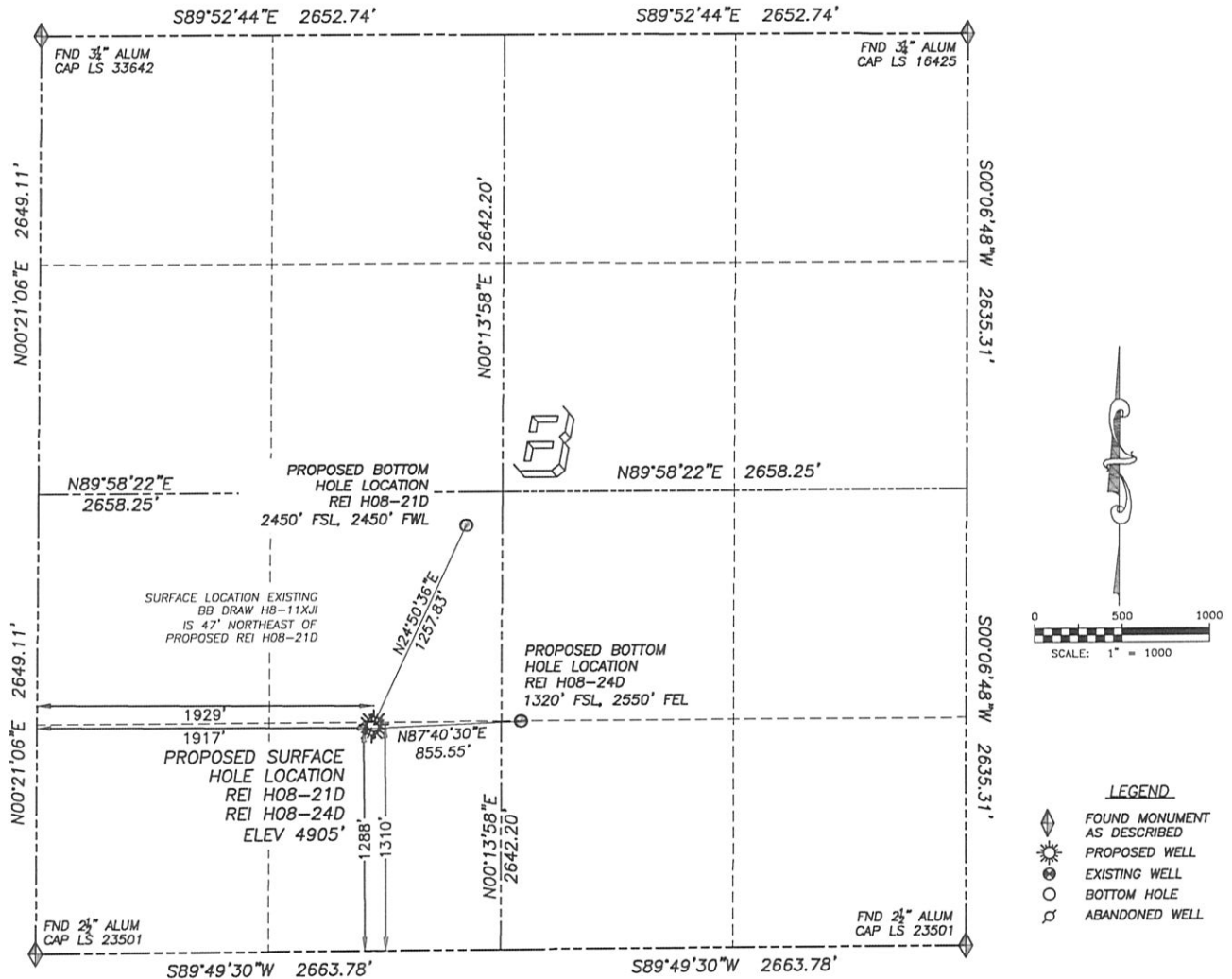


MULTI-WELL PLAN - NOBLE ENERGY

REI H08-21D & REI H08-24D

SECTION 8, TOWNSHIP 3 NORTH, RANGE 65 WEST OF THE 6TH PRINCIPAL MERIDIAN



NAD 83 LATITUDE AND LONGITUDE

REI H08-21D SURFACE HOLE:

LATITUDE: N40.23624°
 LONGITUDE: W104.68989°
 ELEVATION: 4905'
 PDOP 1.6
 1310' FSL, 1929' FWL
 BOTTOM HOLE:
 LATITUDE: N40.23937°
 LONGITUDE: W104.68800°
 2450' FSL, 2450' FWL SEC 8

NEAREST EXISTING WELL:

BB DRAW H8-11XJ SURFACE HOLE
LATITUDE: N40.23636°
LONGITUDE: W104.68983°
ELEVATION: 4905'
47' NORTHEAST

NAD 83 LATITUDE AND LONGITUDE

REI H08-24D SURFACE HOLE:

LATITUDE: N40.23617"
LONGITUDE: W104.68993"
ELEVATION: 4905'
PDOP 1.1
1288' FSL, 1917' FWL
BOTTOM HOLE:
LATITUDE: N40.23627"
LONGITUDE: W104.68687"
1320' FSL, 2550' FEL SEC 8

NEAREST EXISTING WELL:

BB DRAW H8-11XJI SURFACE HOLE
LATITUDE: N40.23636°
LONGITUDE: W104.68983°
ELEVATION: 4905'
72' NORTHEAST