

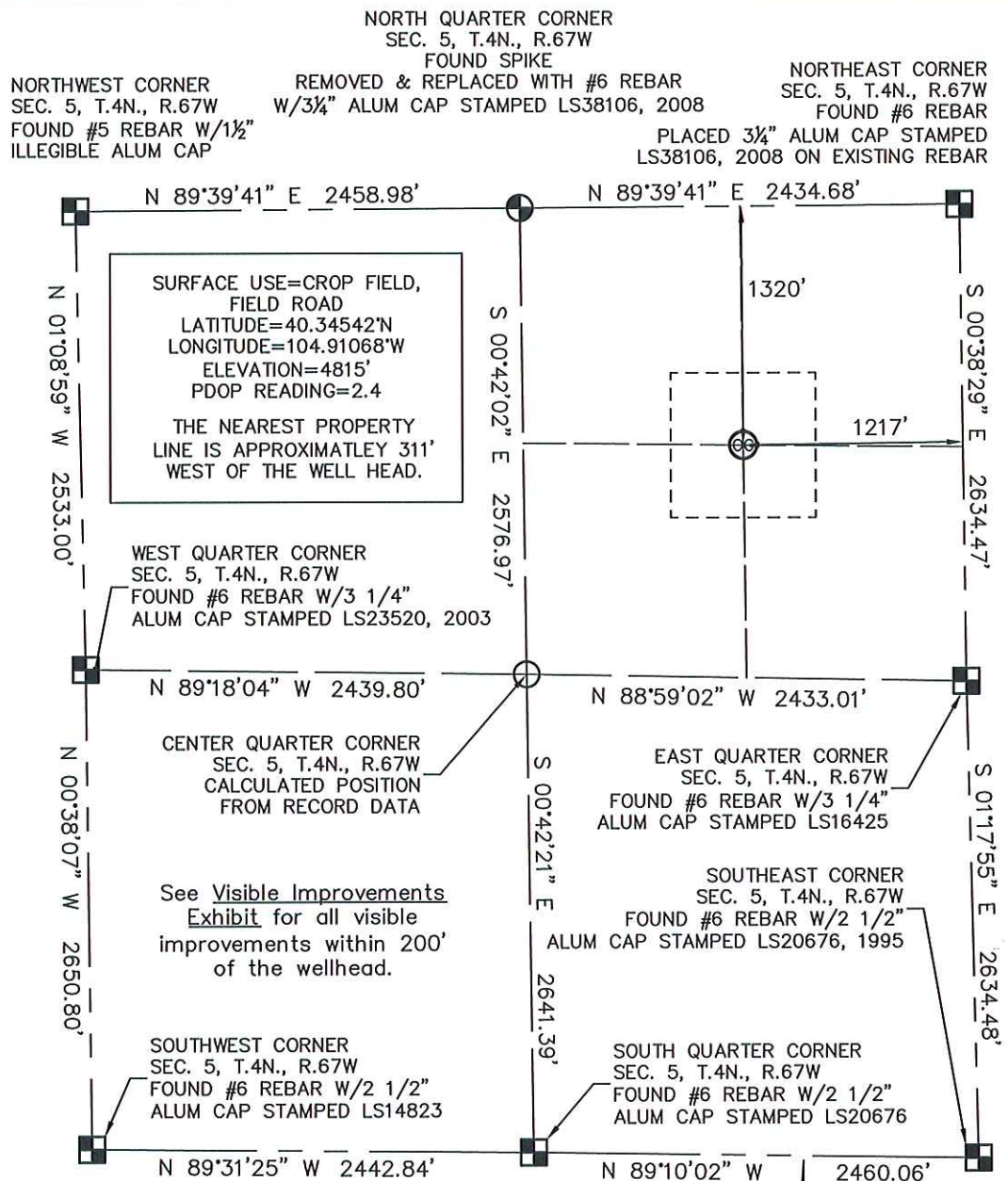
All distances to section lines are measured at right angles to said section lines. The lineal dimensions as contained herein are based upon the "U.S. Survey Foot."

Bearings shown are Grid Bearings of the Colorado State Plane Coordinate System, North Zone, North American Datum 1983/92.

Ground elevation shown is approximate and is based on an observed GPS elevation (NAVD 1988 DATUM).

LEGEND

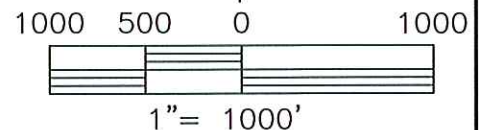
- SECTION LINE
- QUARTER SECTION LINE
- SIXTEENTH SECTION LINE
- FOUND ALIQUOT MONUMENT
- SET ALIQUOT MONUMENT
- CALCULATED POSITION



King Surveyors Inc. of Windsor, Colorado has in accordance with a request from Andy Peterson for Machii-Ross Petroleum Co. determined the surface location of JOHNSTOWN 3-5J to be 1320' from the NORTH Section line and 1217' from the EAST Section line of Section 5, Township 4 North, Range 67 West of the Sixth Principal Meridian, County of Weld, State of Colorado.

Michael Chad Dilka, On behalf of King Surveyors, Inc.
Licensed Land Surveyor No. 38106, State of Colorado

38106 4/7/09



KING SURVEYORS, INC.

650 East Garden Drive | Windsor, Colorado 80550
phone: (970) 686-5011 | fax: (970) 686-5821
www.kingsurveyors.com

PROJECT NO: 2008322-B

DATE: 04/07/2009

CLIENT: MACHII-ROSS PETROLEUM

DWG: 2008322BWELL_MACHII_BASE

FIELD OPERATOR: DALLAS NIELSEN

DATE OF WORK: 9/23/2008