

FORM

12

Rev 6/99

State of Colorado
Oil and Gas Conservation Commission

1120 Lincoln Street, Suite 801, Denver, Colorado 80203 (303)894-2100 Fax:(303)894-2109



01662111

*rec'd
7/14/10***GAS FACILITY REGISTRATION/CHANGE OF OPERATOR**

Use one copy of Form 12 for each facility being registered/change of operator. Per Rule 711, an operator is to provide financial assurance to ensure compliance with the 900 Series rules in the amount of \$50,000 or in an amount voluntarily agreed to with the Director, or in an amount to be determined by order of the Commission. Operators of small systems gathering or processing less than five MMSCFD may provide individual financial assurance in the amount of \$5,000. A facility map must accompany each new registration.*

Complete the
Attachment Checklist
Oper OGCC

OGCC Operator Number: #10345
Name of Operator: Williams Four Corners LLC
Address: 188 CR 4900
City: Bloomfield State: NM Zip: 87413

Contact Name and Telephone:

Dale RugglesNo: 505-330-5411Fax: 970-385-3891

Facility Map	<input checked="" type="checkbox"/>	
Topo Map	<input checked="" type="checkbox"/>	

Operator's Facility Name and Number: Ignacio Gas PlantLocation (QtrQtr, Sec, Twp, Rng, Meridian): SE 1/4 Sec 35 & SW 1/4 Sec 36, T 34 N, R 9 WAddress: 3746 CR 307City: Durango State: CO Zip: 81305 County: La Plata*Serv. 2010-0163
Wms. Companies Inc.***REGISTRATION****TYPE OF OPERATION**☒ **GAS-PROCESSING PLANT**☐ **GATHERING SYSTEM**☐ **STORAGE FACILITY**

*A facility map must accompany each new registration and be resubmitted when significant changes have been made to the facility.

All gathering and distribution maps are to be submitted at a scale no smaller than 1:24,000; all processing facilities at a scale no smaller than 1:100. All maps may be submitted digitally using DWG or DXF formats.

Estimated Daily Processing Total: 400 MMSCFDIs the facility within a sensitive area according to Rule 901.e? ☐ Yes ☒ No**CHANGE OF OPERATOR**

Seller's Signature	
Name of Operator	Operator Number
Title	Date

Buyer or Current Operator

I hereby certify that the statements made in this form are, to the best of my knowledge, true, correct, and complete.

Print Name: Don WicburgSigned: *Don Wicburg*Title: General Manager, Four Corners AreaDate: 07/12/2010

OGCC Approved: _____ Title: _____ Date: _____

CONDITIONS OF APPROVAL, IF ANY:

FACILITY ID: 255458



UNITED STATES ENVIRONMENTAL PROTECTION AGENCY

REGION 8
999 18TH STREET - SUITE 500
DENVER, CO 80202-2466

Facility # 255958

RECEIVED

JUL 14 2010

COGCC

March 22, 1999

Ref: 8P-AR

CERTIFIED MAIL
RETURN RECEIPT REQUESTED

H. Lee Bauerle
Williams Field Services Company
295 Chipeta Way
Salt Lake City, Utah 84158

Dear Mr. Bauerle:

This letter is in reference to the U.S. Environmental Protection Agency's (EPA) amendments to its federal operating permits regulation (40 CFR part 71), which can be found at 64 FR 8247, February 19, 1999. The federal operating permits program was initially promulgated in July 1996. [See notice of final rule at 61 FR 34202, July 1, 1996]. These amendments clarify the Agency's authority to issue operating permits to facilities located in "Indian country."

Our records indicate that Williams Field Services has major sources of air pollution located on the Southern Ute Indian Reservation. These sources are the PLA-9 Compressor Station and the Ignacio Gas Processing Plant. Because these sources are located within the jurisdiction of the Southern Ute Reservation, EPA has responsibility for issuing and enforcing a Title V permit for each source, pursuant to the federal regulations at 40 CFR part 71. This authority will remain with EPA until such time as EPA approves a Title V program for the Southern Ute Tribe, or until EPA delegates Title V authority to the Tribe. The amended part 71 regulation was effective in all parts of Indian country on March 22, 1999.

In addition to the requirements of 40 CFR part 71, owners and operators of affected emissions units are required to address the requirements of the Compliance Assurance Monitoring (CAM) rule, at 40 CFR part 64. The information required under the CAM rule (commonly called a "CAM plan") must be submitted with the part 71 operating permit application. The CAM rule requires Title V sources to complete a written CAM plan and perform monitoring of controlled units that are subject to an emissions limitation or standard, which constitutes an applicable requirement under the Clean Air Act.



Printed on Recycled Paper

Enclosed with this letter are copies of the following documents:

- 1) the July 1, 1996 part 71 regulation;
- 2) the February 19, 1999 amended part 71 regulation;
- 3) the part 71 permit application and instruction sheet on diskette; and
- 4) the Compliance Assurance Monitoring final rule [62 FR 54900, October 22, 1997].

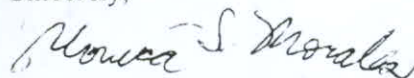
EPA requests that Williams Field Services please examine 40 CFR §71.3 to verify or determine the applicability of the federal operating permits rule to its sources. If subject, then please fill out and return all applicable portions of the part 71 application, including the Fee Calculation Worksheet and the Compliance Certification. A separate application is required for each source. The application form may be downloaded and printed from the Internet, but it is not suitable for on-line data entry or electronic submittal. The web site address for the application form is: <http://www.epa.gov/oar/oaqps/permits/p71forms.html>.

EPA also requests that Williams Field Services examine 40 CFR §64.2 to determine the applicability of the CAM rule to its emission units and if subject, submit the information required under 40 CFR §64.4 with the respective part 71 application. In addition, Williams Field Services must submit initial fees along with its part 71 permit applications, as required by 40 CFR §71.9(f)(3). The part 71 fee payment is performed using a "lockbox" bank account system, which is described in the instructions for the application. Please include a photocopy of the fee payment check with your submittal of the applications. One criteria EPA uses to determine that a part 71 application is complete, is that the emissions fee has been paid by the applicant.

Pursuant to 40 CFR §71.5(a)(1), EPA is formally requiring Williams Field Services to submit its complete part 71 applications for the PLA-9 facility and the Ignacio Gas Processing Plant on or before September 30, 1999, which allows Williams Field Services at least six (6) months for application submittal. Williams Field Services is responsible for submitting part 71 applications for all of its facilities located in Indian country that are subject to this rule, even if a facility has not been identified in this letter. Applications for sources not listed above are due on or before March 22, 2000.

Please address your applications submittal to me at the above address. If you have any questions regarding this matter, please feel free to contact me at (303) 312-6936.

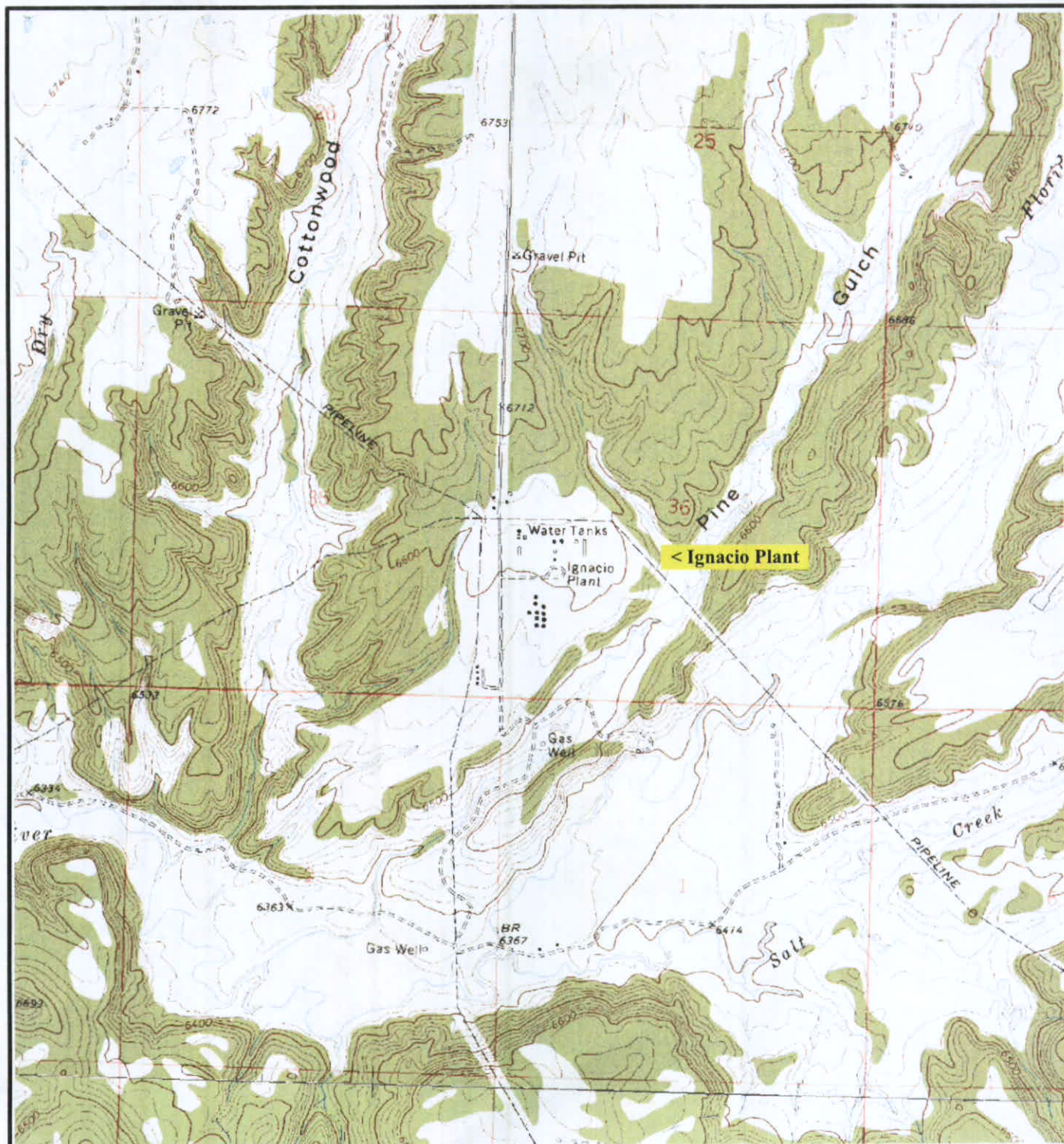
Sincerely,



Monica S. Morales
Air and Radiation Program

Enclosures (4)

cc: Cheryl Wiescamp (Southern Ute Tribe, w/out enclosures)



Source: USGS Loma Linda, Colorado Quadrangle

0 2000
Scale (Feet)



Figure 1 Site Vicinity / Topographic Map

Ignacio Gas Processing Plant

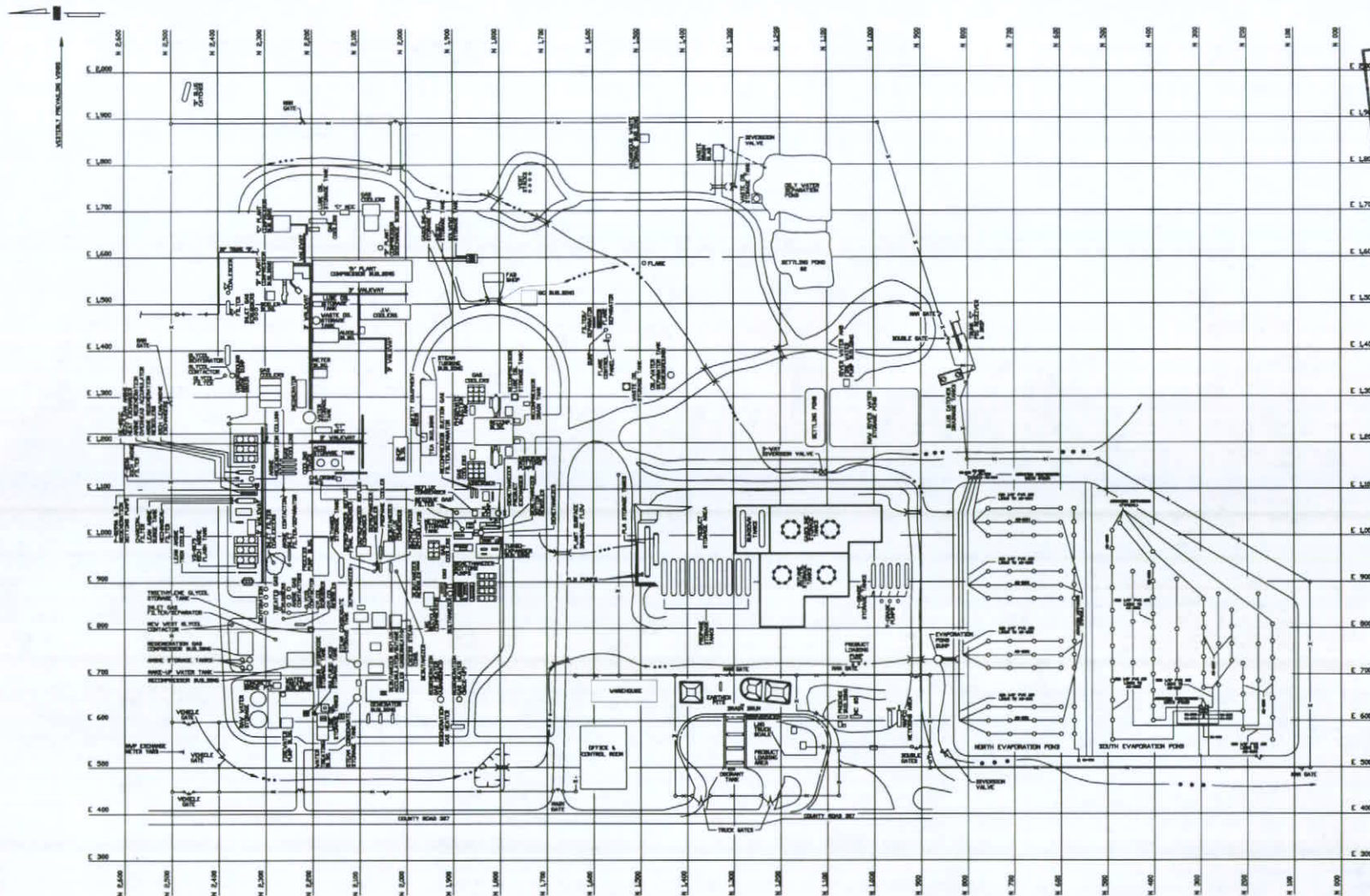
Section 36, Township 34N Range 9W

La Plata County, Colorado

RECEIVED

JUL 14 2010

COGCC



RECEIVED
JUL 14 2010
COGCC

REVISED
JUNE 14, 2009
DESTROY ALL
PREVIOUS EDITIONS

NOTES:

CHANGING NO.	TITLE
1	REFERENCE DRAWINGS
2	
3	
4	
5	
6	
7	
8	
9	
10	
11	REVISED EVAPORATION POND TO INC. POND
12	REVISED PUMP ROOM CHANGING PUMP ROOM
13	REVISED PUMP ROOM CHANGING PUMP ROOM
14	REVISED PUMP ROOM CHANGING PUMP ROOM
15	REVISED PUMP ROOM CHANGING PUMP ROOM
16	REVISED PUMP ROOM CHANGING PUMP ROOM
17	REVISED PUMP ROOM CHANGING PUMP ROOM
18	REVISED PUMP ROOM CHANGING PUMP ROOM
19	REVISED PUMP ROOM CHANGING PUMP ROOM
20	REVISED PUMP ROOM CHANGING PUMP ROOM
21	REVISED PUMP ROOM CHANGING PUMP ROOM
22	REVISED PUMP ROOM CHANGING PUMP ROOM
23	REVISED PUMP ROOM CHANGING PUMP ROOM
24	REVISED PUMP ROOM CHANGING PUMP ROOM
25	REVISED PUMP ROOM CHANGING PUMP ROOM
26	REVISED PUMP ROOM CHANGING PUMP ROOM
27	REVISED PUMP ROOM CHANGING PUMP ROOM
28	REVISED PUMP ROOM CHANGING PUMP ROOM
29	REVISED PUMP ROOM CHANGING PUMP ROOM
30	REVISED PUMP ROOM CHANGING PUMP ROOM
31	REVISED PUMP ROOM CHANGING PUMP ROOM
32	REVISED PUMP ROOM CHANGING PUMP ROOM
33	REVISED PUMP ROOM CHANGING PUMP ROOM
34	REVISED PUMP ROOM CHANGING PUMP ROOM
35	REVISED PUMP ROOM CHANGING PUMP ROOM
36	REVISED PUMP ROOM CHANGING PUMP ROOM
37	REVISED PUMP ROOM CHANGING PUMP ROOM
38	REVISED PUMP ROOM CHANGING PUMP ROOM
39	REVISED PUMP ROOM CHANGING PUMP ROOM
40	REVISED PUMP ROOM CHANGING PUMP ROOM
41	REVISED PUMP ROOM CHANGING PUMP ROOM
42	REVISED PUMP ROOM CHANGING PUMP ROOM
43	REVISED PUMP ROOM CHANGING PUMP ROOM
44	REVISED PUMP ROOM CHANGING PUMP ROOM
45	REVISED PUMP ROOM CHANGING PUMP ROOM
46	REVISED PUMP ROOM CHANGING PUMP ROOM
47	REVISED PUMP ROOM CHANGING PUMP ROOM
48	REVISED PUMP ROOM CHANGING PUMP ROOM
49	REVISED PUMP ROOM CHANGING PUMP ROOM
50	REVISED PUMP ROOM CHANGING PUMP ROOM
51	REVISED PUMP ROOM CHANGING PUMP ROOM
52	REVISED PUMP ROOM CHANGING PUMP ROOM
53	REVISED PUMP ROOM CHANGING PUMP ROOM
54	REVISED PUMP ROOM CHANGING PUMP ROOM
55	REVISED PUMP ROOM CHANGING PUMP ROOM
56	REVISED PUMP ROOM CHANGING PUMP ROOM
57	REVISED PUMP ROOM CHANGING PUMP ROOM
58	REVISED PUMP ROOM CHANGING PUMP ROOM
59	REVISED PUMP ROOM CHANGING PUMP ROOM
60	REVISED PUMP ROOM CHANGING PUMP ROOM
61	REVISED PUMP ROOM CHANGING PUMP ROOM
62	REVISED PUMP ROOM CHANGING PUMP ROOM
63	REVISED PUMP ROOM CHANGING PUMP ROOM
64	REVISED PUMP ROOM CHANGING PUMP ROOM
65	REVISED PUMP ROOM CHANGING PUMP ROOM
66	REVISED PUMP ROOM CHANGING PUMP ROOM
67	REVISED PUMP ROOM CHANGING PUMP ROOM
68	REVISED PUMP ROOM CHANGING PUMP ROOM
69	REVISED PUMP ROOM CHANGING PUMP ROOM
70	REVISED PUMP ROOM CHANGING PUMP ROOM
71	REVISED PUMP ROOM CHANGING PUMP ROOM
72	REVISED PUMP ROOM CHANGING PUMP ROOM
73	REVISED PUMP ROOM CHANGING PUMP ROOM
74	REVISED PUMP ROOM CHANGING PUMP ROOM
75	REVISED PUMP ROOM CHANGING PUMP ROOM
76	REVISED PUMP ROOM CHANGING PUMP ROOM
77	REVISED PUMP ROOM CHANGING PUMP ROOM
78	REVISED PUMP ROOM CHANGING PUMP ROOM
79	REVISED PUMP ROOM CHANGING PUMP ROOM
80	REVISED PUMP ROOM CHANGING PUMP ROOM
81	REVISED PUMP ROOM CHANGING PUMP ROOM
82	REVISED PUMP ROOM CHANGING PUMP ROOM
83	REVISED PUMP ROOM CHANGING PUMP ROOM
84	REVISED PUMP ROOM CHANGING PUMP ROOM
85	REVISED PUMP ROOM CHANGING PUMP ROOM
86	REVISED PUMP ROOM CHANGING PUMP ROOM
87	REVISED PUMP ROOM CHANGING PUMP ROOM
88	REVISED PUMP ROOM CHANGING PUMP ROOM
89	REVISED PUMP ROOM CHANGING PUMP ROOM
90	REVISED PUMP ROOM CHANGING PUMP ROOM
91	REVISED PUMP ROOM CHANGING PUMP ROOM
92	REVISED PUMP ROOM CHANGING PUMP ROOM
93	REVISED PUMP ROOM CHANGING PUMP ROOM
94	REVISED PUMP ROOM CHANGING PUMP ROOM
95	REVISED PUMP ROOM CHANGING PUMP ROOM
96	REVISED PUMP ROOM CHANGING PUMP ROOM
97	REVISED PUMP ROOM CHANGING PUMP ROOM
98	REVISED PUMP ROOM CHANGING PUMP ROOM
99	REVISED PUMP ROOM CHANGING PUMP ROOM
100	REVISED PUMP ROOM CHANGING PUMP ROOM

NO.	DESCRIPTION	DATE	BY	CHECKED BY	APPROVED BY
10	ADDED NEW PLANT & PLANT CONTROL PANEL	8/1/09	P. HENDERSON		
9	ADDED SC BAS, OFFICE & BATHHOUSE & PUMP STORAGE TANK	8/1/09	P. HENDERSON		
8	REVISED FOR FIELD MEASUREMENT	1/29/07	PH		
7	ADDED NEW EQUIPMENT	8/1/07	CH		
6	ADDED NEW EQUIPMENT	8/1/07	CH		
5	ADDED NEW EQUIPMENT	8/1/07	CH		
4	ADDED NEW EQUIPMENT	8/1/07	CH		
3	ADDED NEW EQUIPMENT	8/1/07	CH		
2	ADDED NEW EQUIPMENT	8/1/07	CH		
1	ADDED NEW EQUIPMENT	8/1/07	CH		

WILLIAMS MIDSTREAM GAS & LIQUIDS	
IGNACIO PLANT	
PLOT PLAN	
LA PLATA COUNTY	COLORADO
DESIGNED BY	OFF
CHECKED BY	
PROJECT ENG.	
APPROVED BY	
DATE REVISION	8/23/03

5N1-1-P123